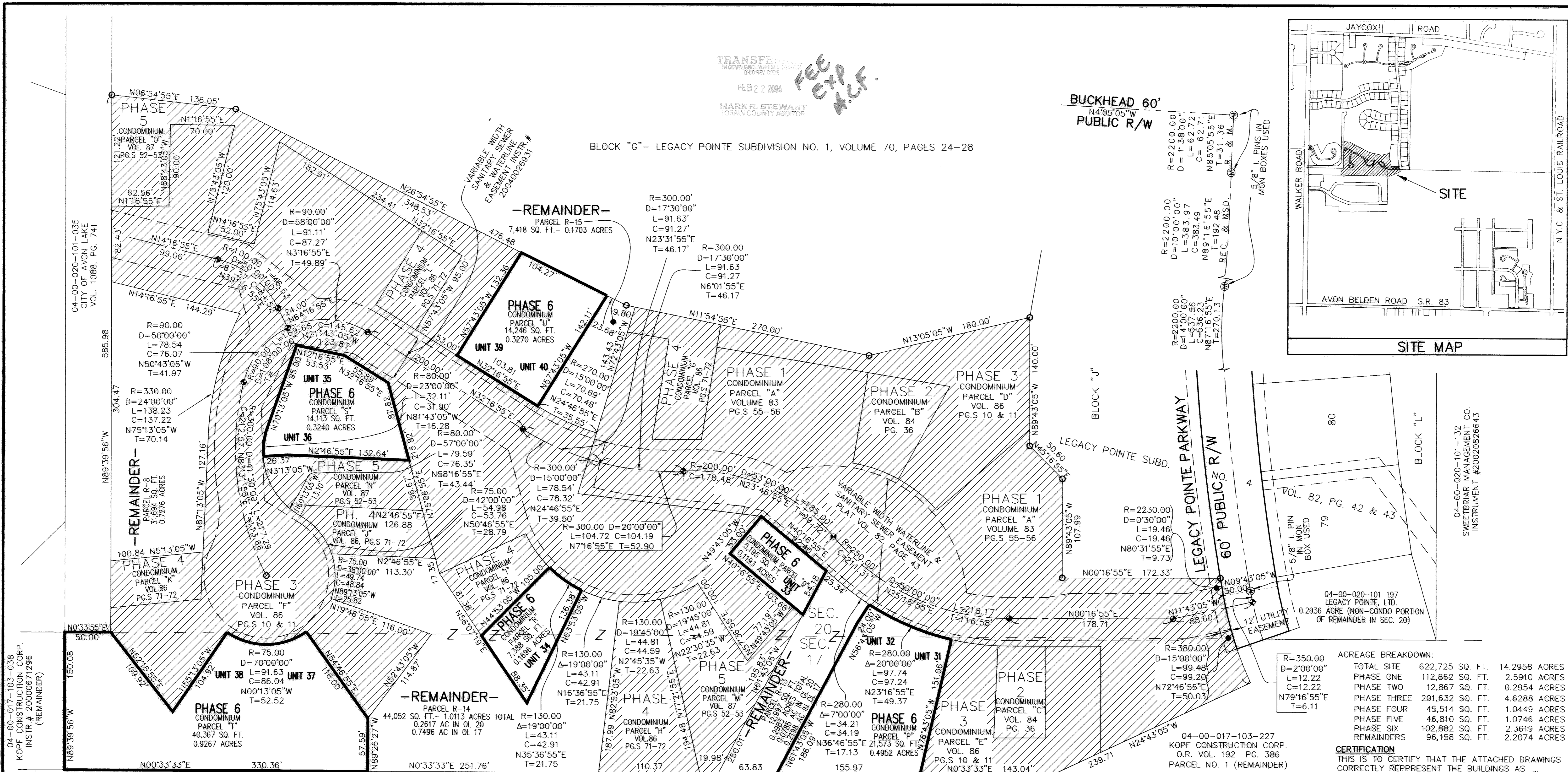
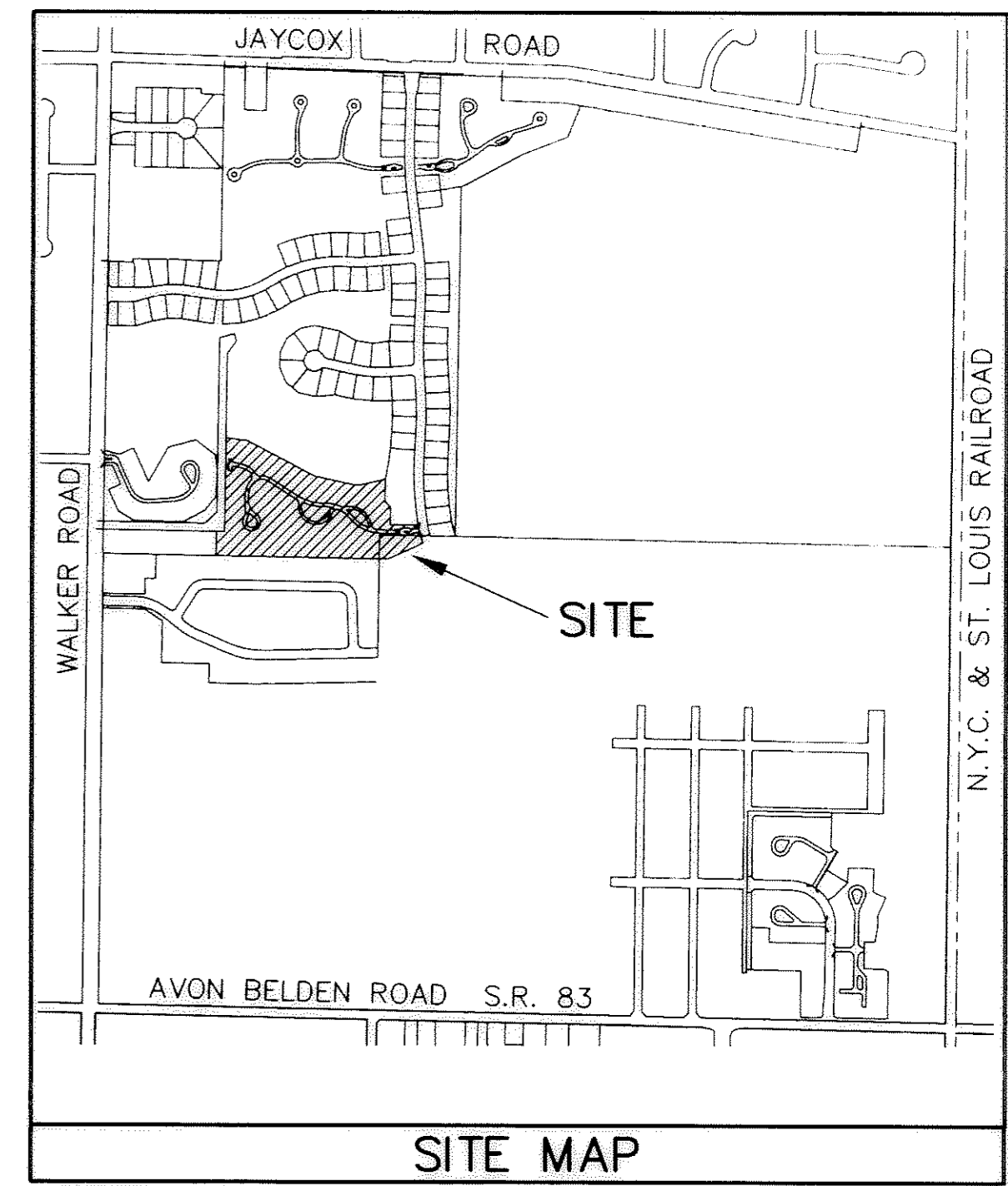


TRANSFE...
 FEB 2 2 2006
 MARK R. STEWART
 LORAIN COUNTY AUDITOR

BLOCK "G" - LEGACY POINTE SUBDIVISION NO. 1, VOLUME 70, PAGES 24-28

BUCKHEAD 60'
 N4°05'05"W
 PUBLIC R/W



ACREAGE BREAKDOWN:

TOTAL SITE	622,725 SQ. FT.	14.2958 ACRES
PHASE ONE	112,862 SQ. FT.	2.5910 ACRES
PHASE TWO	12,867 SQ. FT.	0.2954 ACRES
PHASE THREE	201,632 SQ. FT.	4.6288 ACRES
PHASE FOUR	45,514 SQ. FT.	1.0449 ACRES
PHASE FIVE	46,810 SQ. FT.	1.0746 ACRES
PHASE SIX	102,882 SQ. FT.	2.3619 ACRES
REMAINDERS	96,158 SQ. FT.	2.2074 ACRES

CERTIFICATION
 THIS IS TO CERTIFY THAT THE ATTACHED DRAWINGS CORRECTLY REPRESENT THE BUILDINGS AS CONSTRUCTED AND THAT THERE ARE NO ENCROACHMENTS ON ADJUTING PROPERTIES.

JAMES T. SAYLER, P.E.
 PROFESSIONAL ENGINEER NO. E-52385
 JAMES T. SAYLER
 PROFESSIONAL SURVEYOR NO. S-7425

NOTE:
 LIMITED COMMON ELEMENTS INCLUDE THE LAND WITHIN 3 FEET FROM THE FOUNDATION AND PATIOS/DECKS/PORCHES/SUNROOMS OF EACH UNIT, AND LAND 12 FEET OFF OF MAIN REAR WALL FOR CONSTRUCTION OF A DECK OR PATIO

LEGEND:

- ⊙ DENOTES 5/8" CAPPED (REITZ ENG.) IRON PIN IN MONUMENT BOX USED.
- DENOTES 5/8" CAPPED (REITZ ENG.) IRON PIN USED.
- ◆ DENOTES 1/4" DRILL HOLE USED

BASED ON LEGACY POINTE SUBD. PLATS

GRAPHIC SCALE: 1" = 50'
 0 25 50 100

04-00-017-103-038
 KOPE CONSTRUCTION CORP.
 INSTR. # 20000671296
 (REMAINDER)

WINDSOR HOLLOW SUBDIVISION NO. 2, VOL. 52, PG. 7

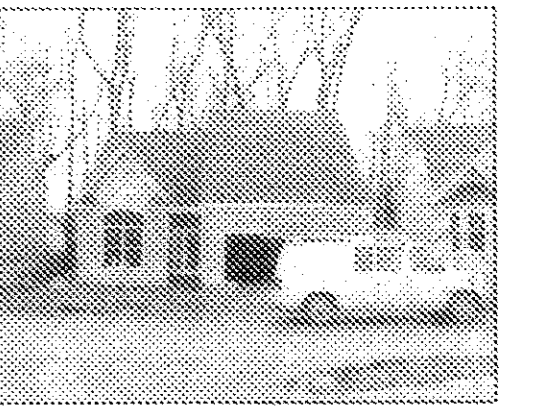
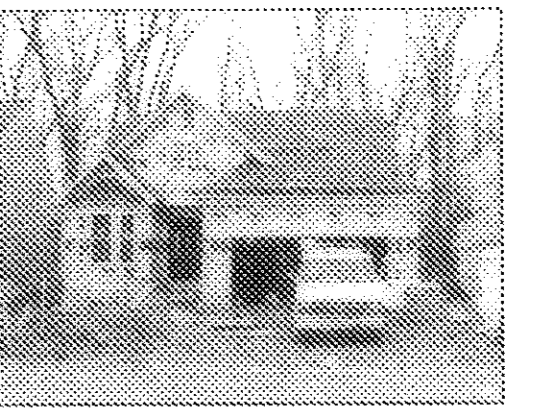
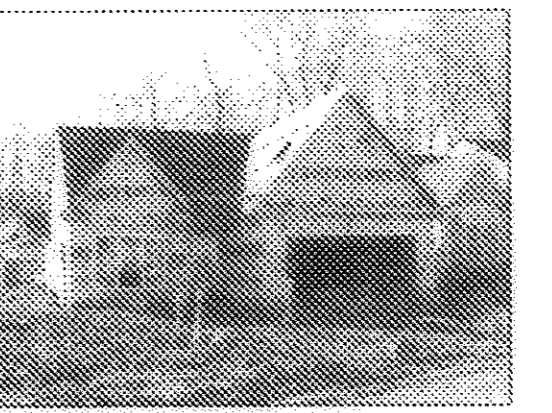
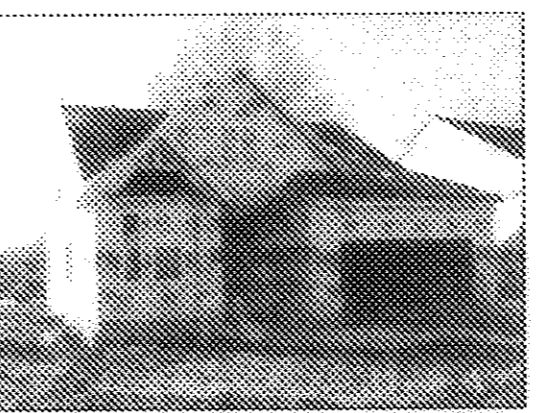
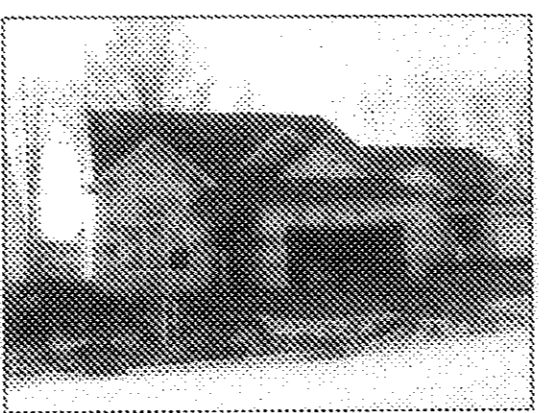
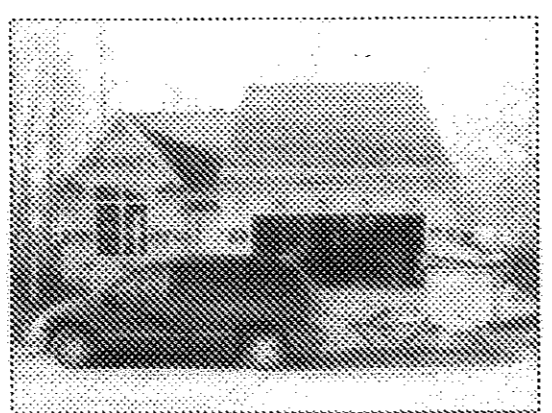
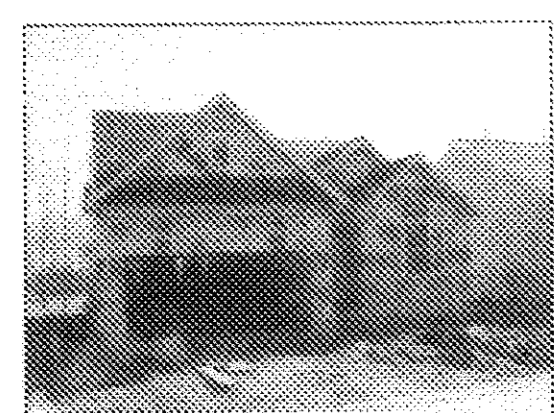
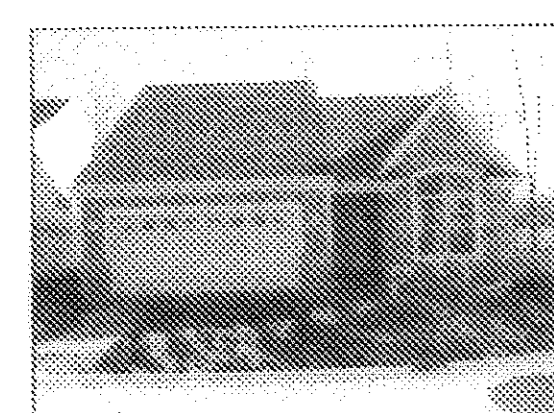
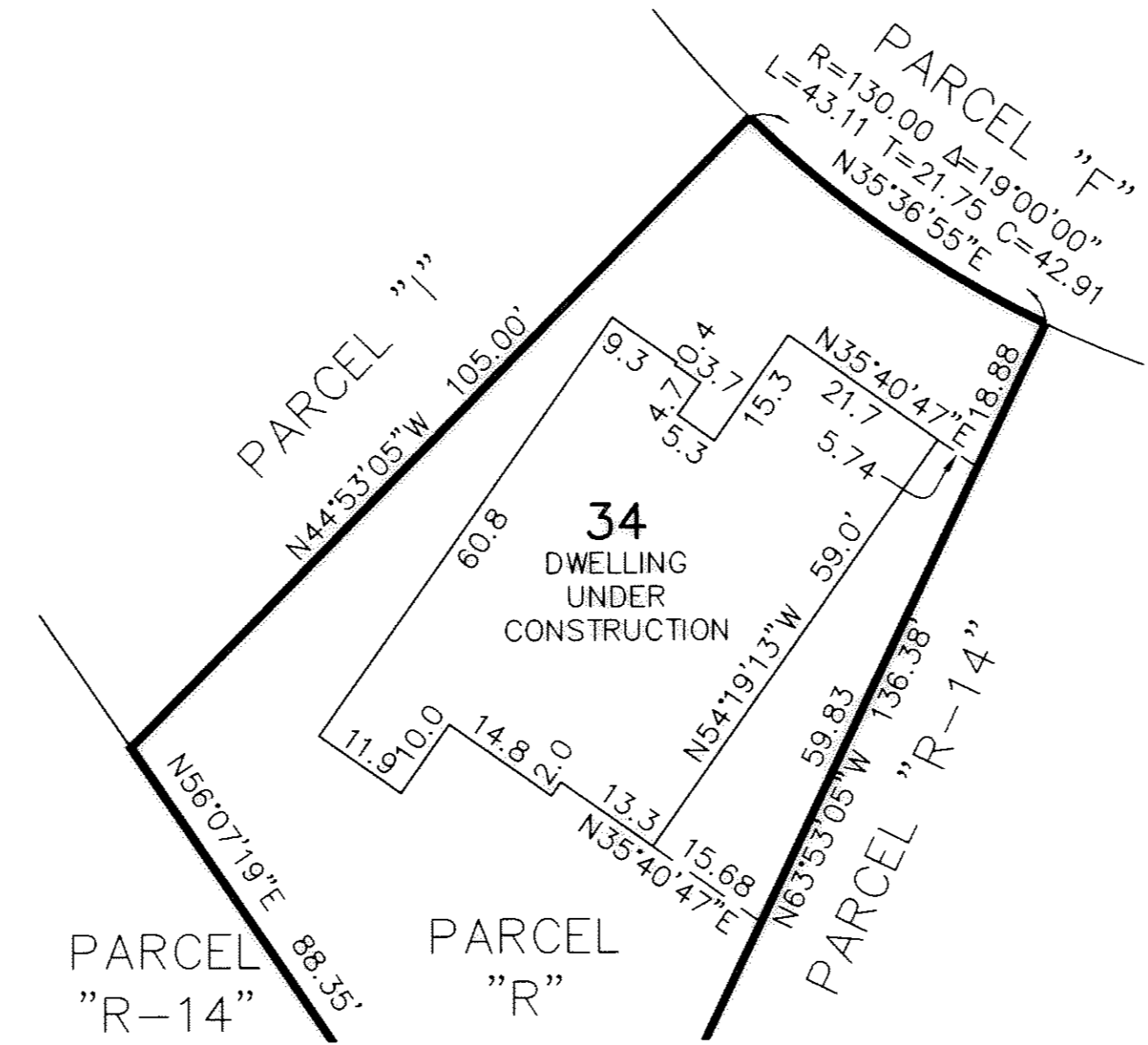
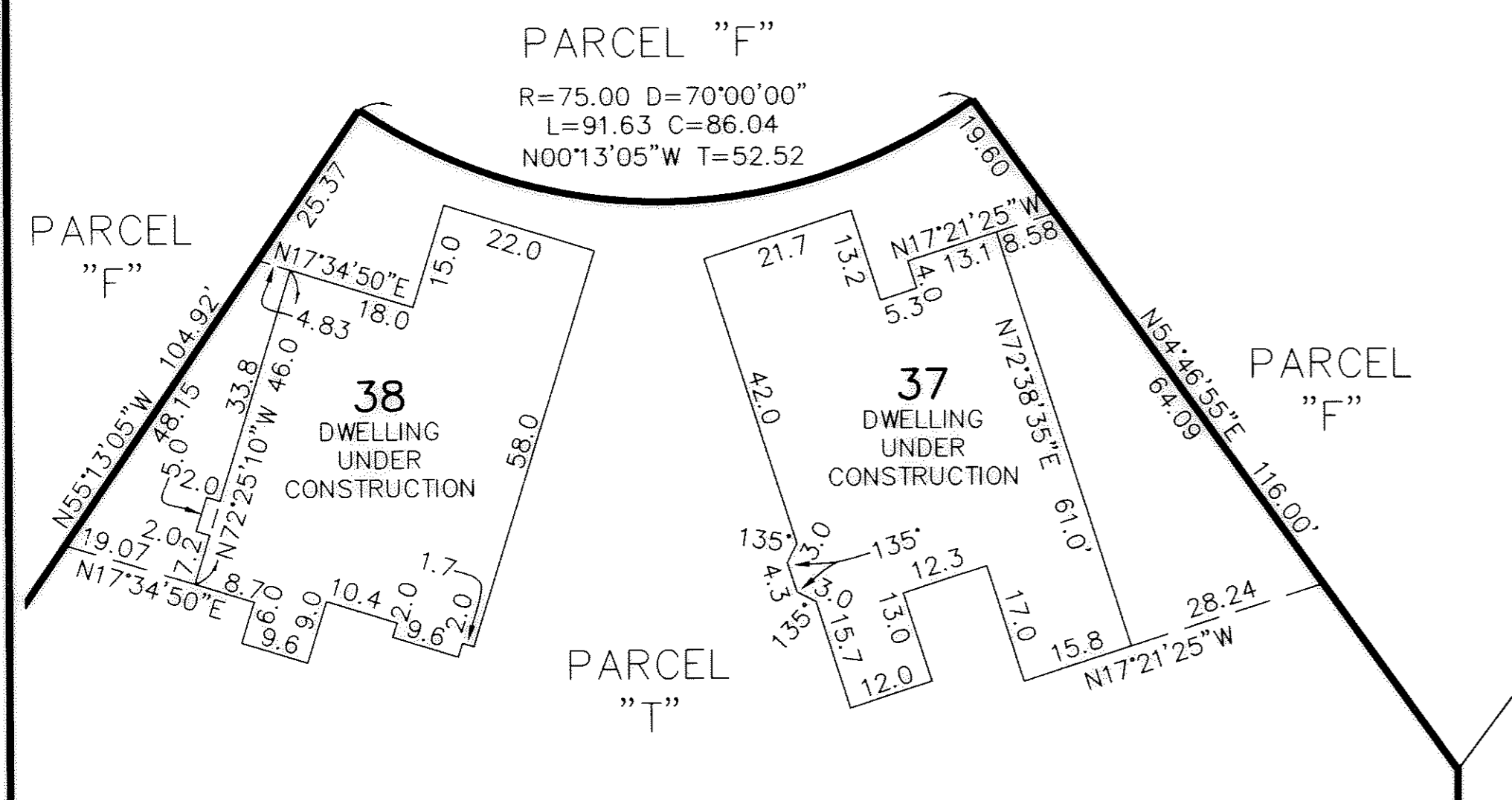
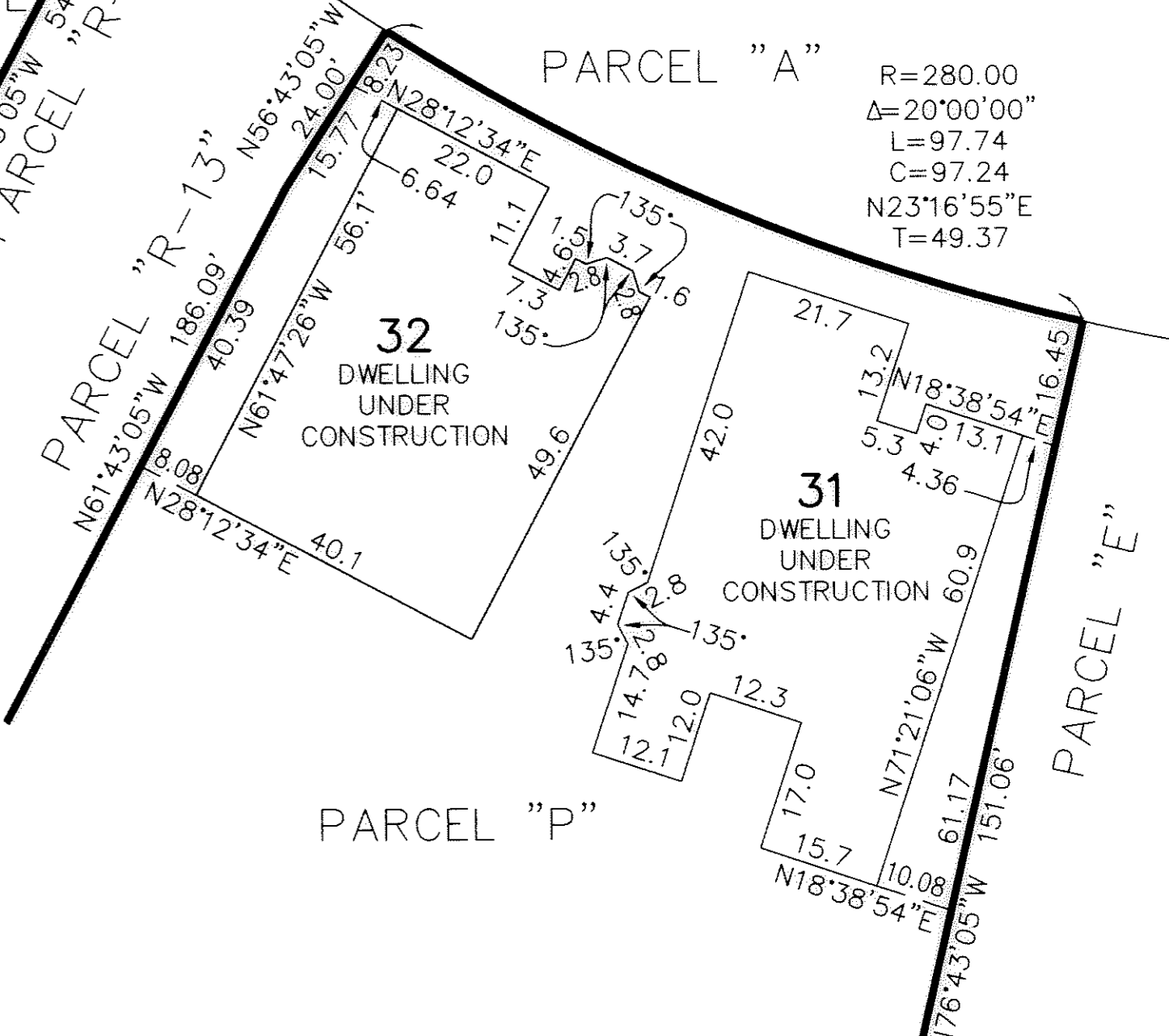
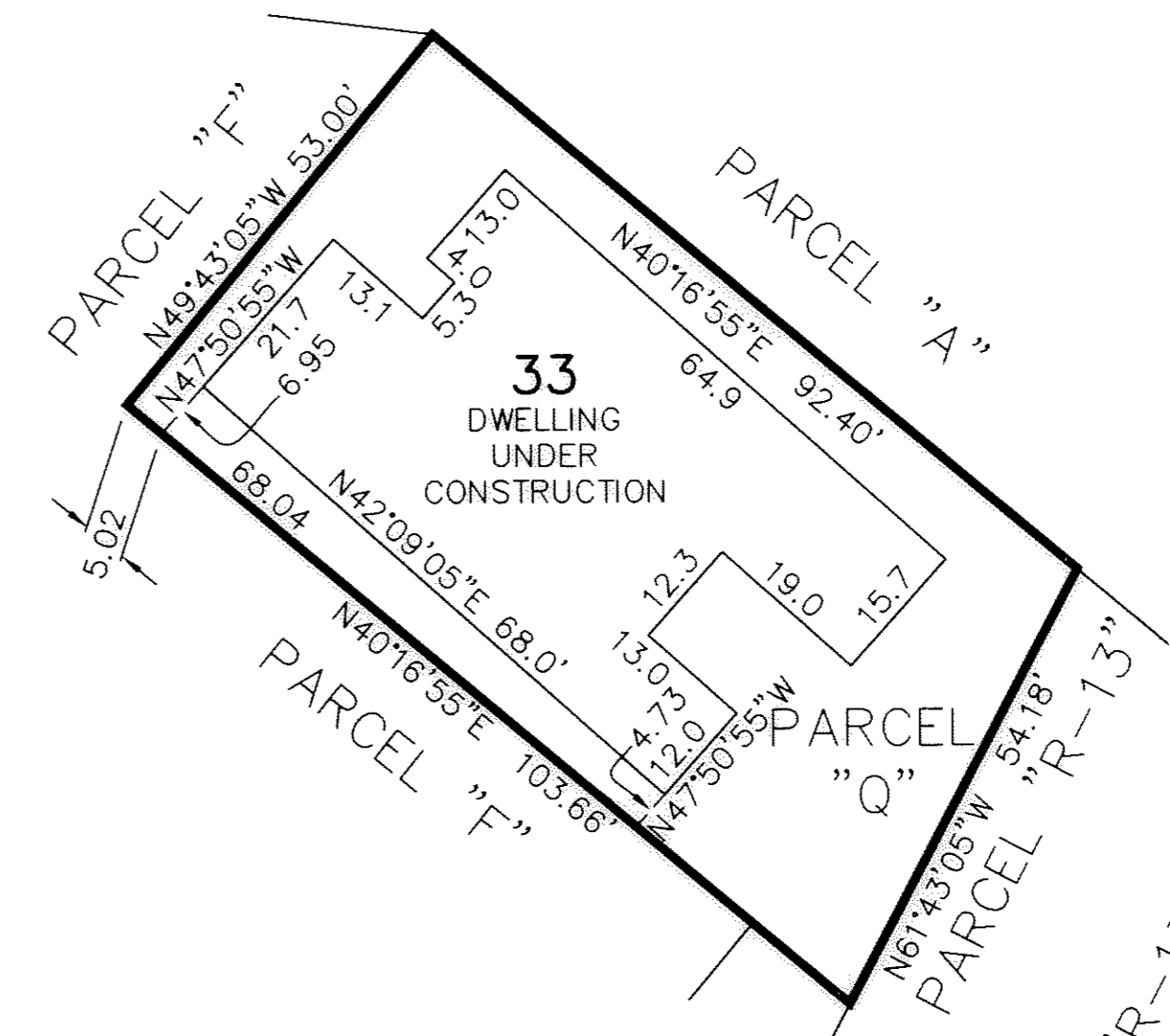
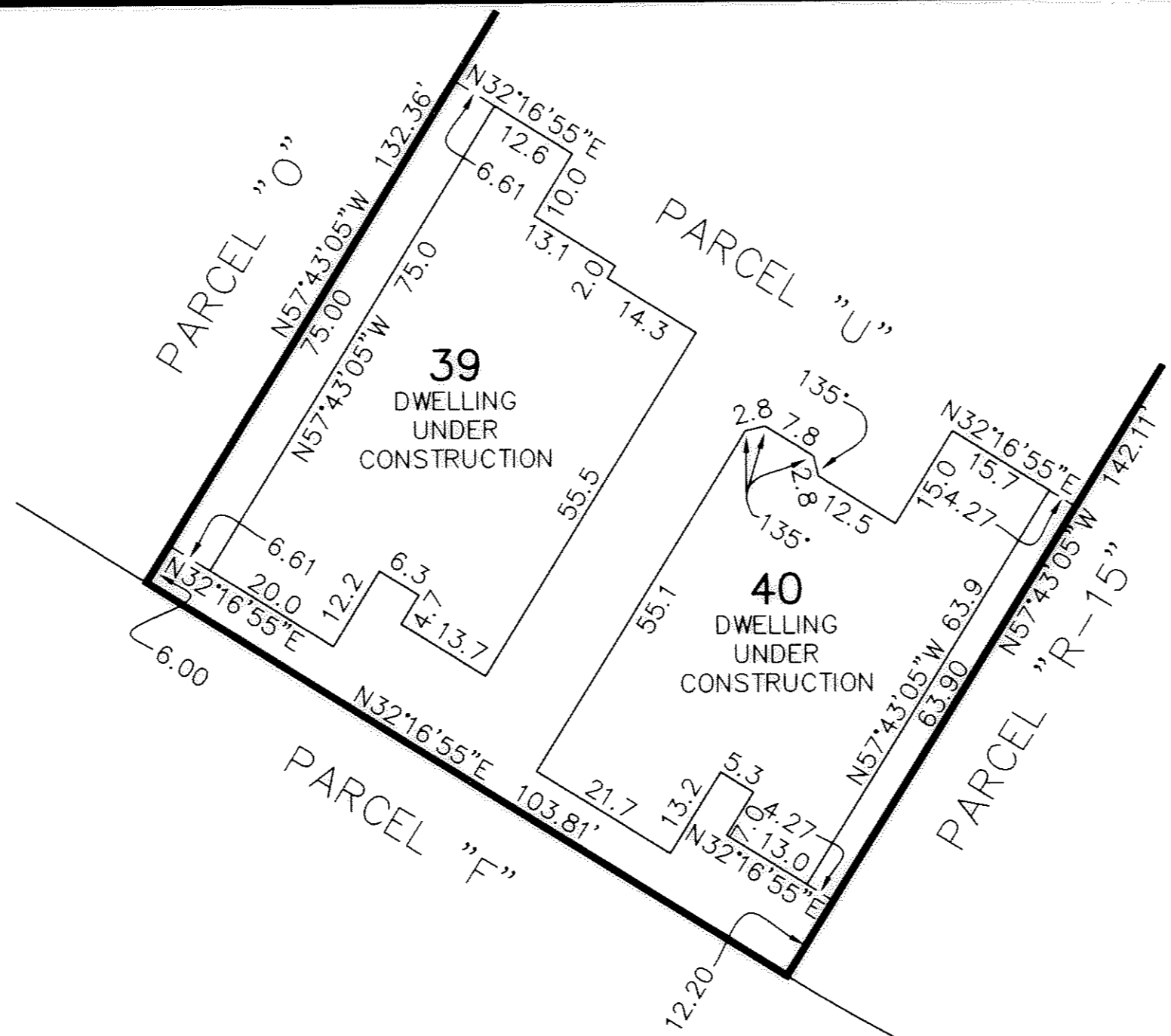
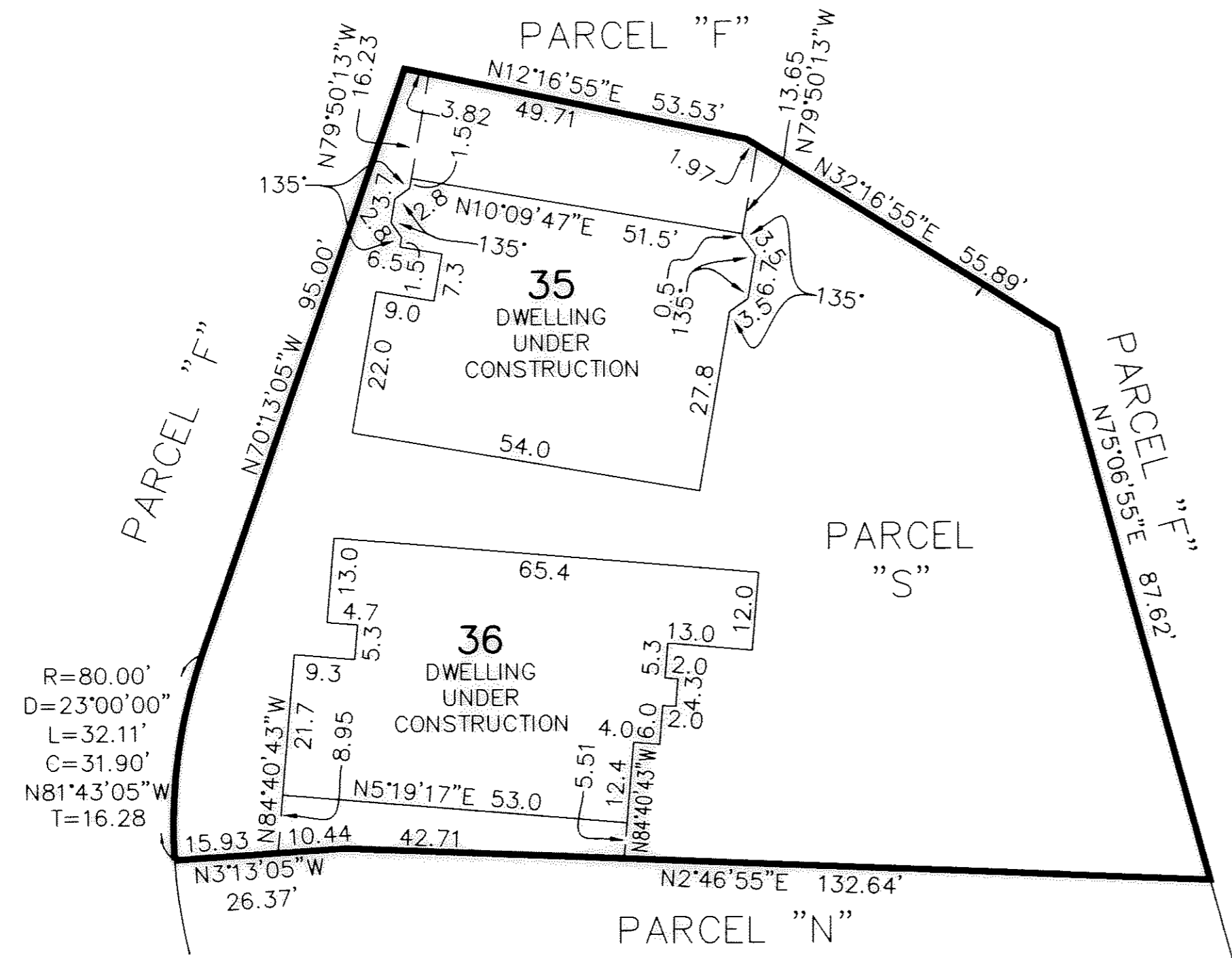
LEGACY POINTE CONDOMINIUM NO. 3 PH 6

OF PART OF ORIGINAL AVON TWP. SEC #17 & #20
 CITY OF AVON LAKE, COUNTY OF LORAIN, OHIO

THE HENRY G. REITZ ENGINEERING COMPANY

4214 ROCKY RIVER DRIVE
 CLEVELAND, OHIO 44135
 PHONE: (216) 251-3033

1
 2
 JANUARY 2006



UNIT 40 FRONT

UNIT 39 FRONT

UNIT 38 FRONT

UNIT 37 FRONT

UNIT 36 FRONT

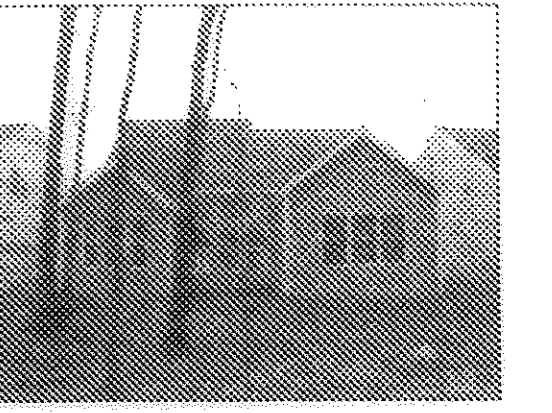
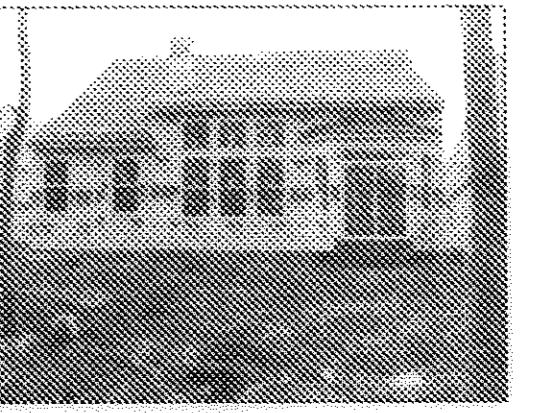
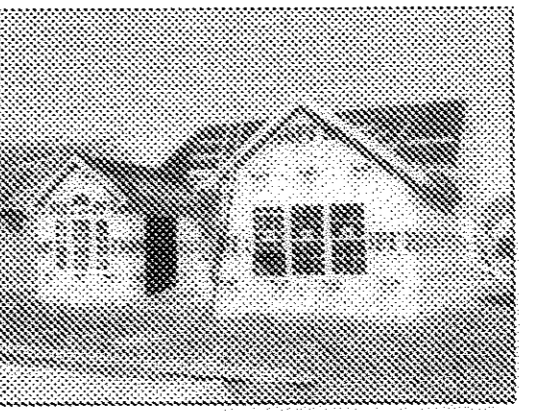
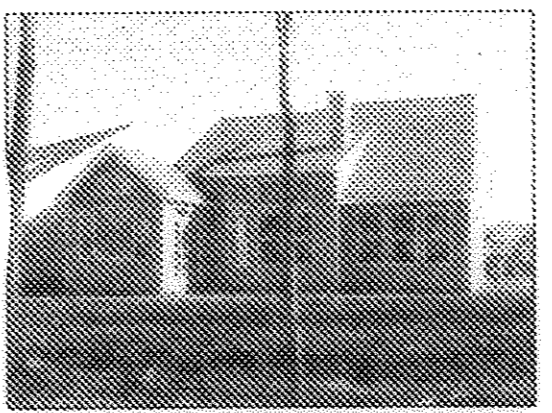
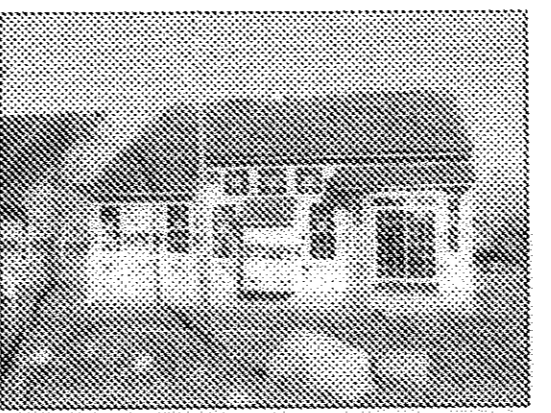
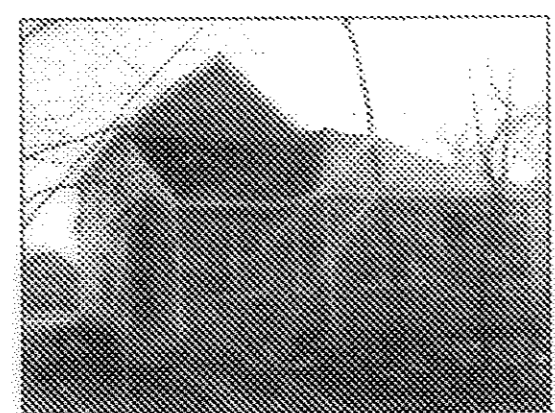
UNIT 35 FRONT

UNIT 34 FRONT

UNIT 33 FRONT

UNIT 32 FRONT

UNIT 31 FRONT



UNIT 40 REAR

UNIT 39 REAR

UNIT 38 REAR

UNIT 37 REAR

UNIT 36 REAR

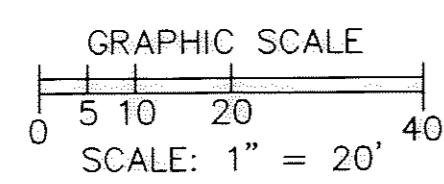
UNIT 35 REAR

UNIT 34 REAR

UNIT 33 REAR

UNIT 32 REAR

UNIT 31 REAR



BASED ON LEGACY
POINTE SUBD. PLATS

REVISIONS	2/14/2006	CORRECTED BUILDING DIMENSION TYPO ON UNIT 38

**LEGACY POINTE
CONDOMINIUM NO. 3 PH 6**
OF PART OF ORIGINAL AVON TWP. SEC #17 & #20
CITY OF AVON LAKE, COUNTY OF LORAIN, OHIO

**THE HENRY G. REITZ
ENGINEERING COMPANY**
4214 ROCKY RIVER DRIVE
CLEVELAND, OHIO 44135
PHONE: (216) 251-3033