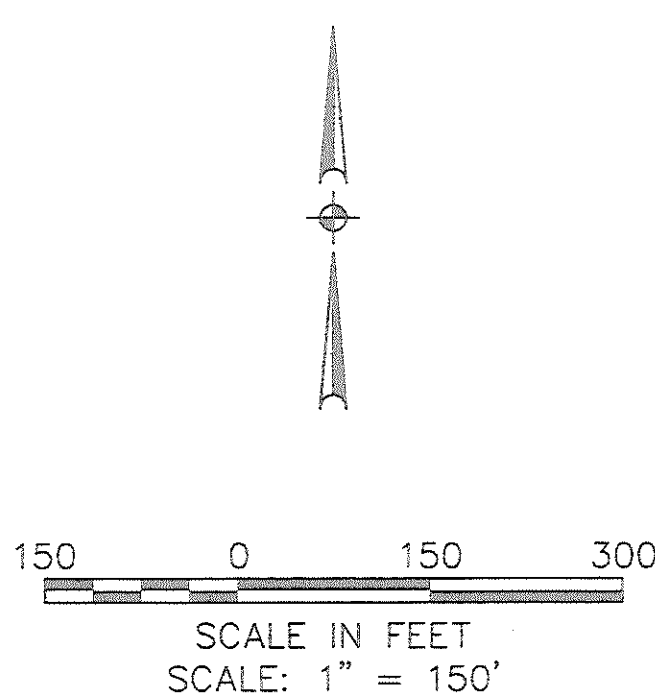


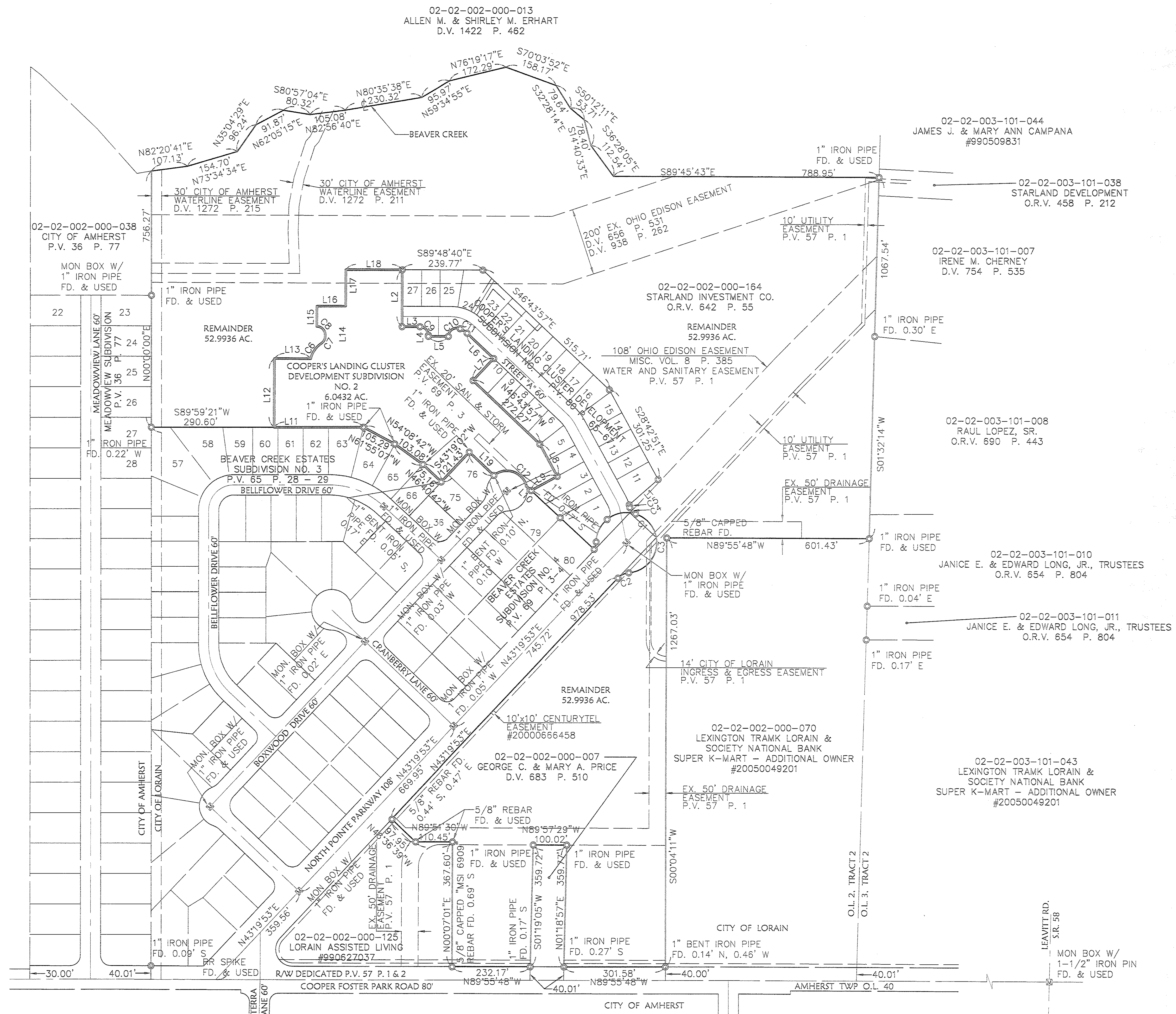
R:\020000\02192\dwg\CONTROL\CONTR01.dwg 3/1/2005 4:13:15 PM EST

LINE	BEARING	LENGTH
L1	N48°45'39"E	114.27
L2	S00°11'20"W	168.00
L3	S89°48'40"E	53.17
L4	S00°11'20"W	3.40
L5	S89°48'40"E	60.00
L6	S46°43'57"E	108.93
L7	S43°16'03"W	90.00
L8	S28°42'51"E	108.43
L9	S61°17'09"W	88.24
L10	N46°43'57"W	19.32
L11	S89°59'21"W	265.31
L12	N00°11'20"E	202.74
L13	S89°48'40"E	107.64
L14	N00°11'20"E	4.09
L15	N00°11'20"E	60.00
L16	S89°48'40"E	85.50
L17	N00°11'20"E	108.00
L18	S89°48'40"E	167.50
L19	N46°43'57"W	100.44'

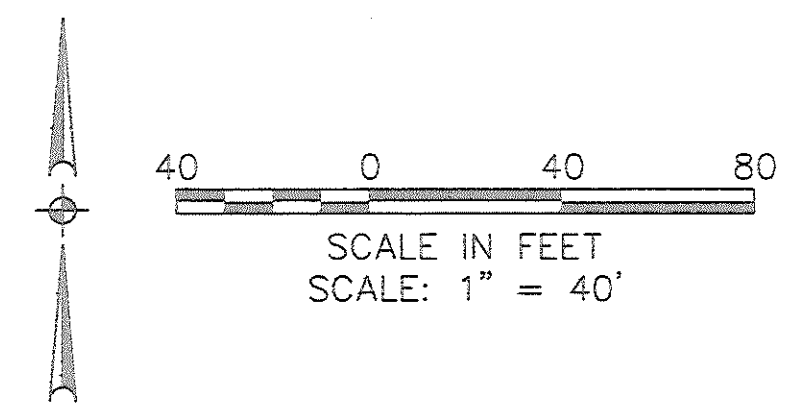
CURVE	LENGTH	RADIUS	TANGENT	DELTA	CHORD	BEARING
C1	414.77	90.00	99.87	264°02'57"	133.71	N46°40'07"W
C2	36.67	50.00	19.21	42°01'29"	35.86	S64°20'37"W
C3	247.98	90.00	460.25	157°52'18"	176.65	N06°25'13"E
C4	26.71	25.00	14.79	61°13'12"	25.46	S41°54'20"E
C5	9.05	130.00	4.53	3°59'19"	9.05	N13°17'24"W
C6	56.87	75.00	29.88	43°26'47"	55.52	S35°05'55"W
C7	24.71	25.00	13.47	56°37'59"	23.72	N28°30'19"E
C8	39.27	25.00	25.00	90°00'00"	35.36	N44°48'40"W
C9	39.27	25.00	25.00	90°00'00"	35.36	N44°48'40"W
C10	49.15	25.00	37.51	112°38'27"	41.61	S56°30'33"W
C11	24.67	69.16	12.47	20°26'18"	24.54	S56°57'05"E
C12	121.19	60.00	95.51	115°43'36"	101.61	N72°00'06"W



- LEGEND**
- ☒ EXISTING MONUMENT BOX
 - ⊙ IRON PIPE/ IRON PIN/ 5/8" x 30" KS CAPPED PIN FOUND LABELED "KS ASSOCS INC PROP MARKER"
 - ☒ PROPOSED MONUMENT BOX
 - 5/8" x 30" KS CAPPED PIN SET LABELED "KS ASSOCS INC PROP MARKER"
 - R.R SPIKE FOUND



BY	
DESCRIPTION	
DATE	
REVISIONS	
DATE: 01-22-03 DRAWN BY: DAM CTD BY: DES. NAME: 2-PLAT02 PATH: E:\APR\2003\CONTROL	02-02-003-101-044 JAMES J. & MARY ANN CAMPANA #990509831 02-02-003-101-038 STARLAND DEVELOPMENT O.R.V. 458 P. 212 02-02-003-101-007 IRENE M. CHERNEY D.V. 754 P. 535 02-02-003-101-008 RAUL LOPEZ, SR. O.R.V. 690 P. 443 02-02-003-101-010 JANICE E. & EDWARD LONG, JR., TRUSTEES O.R.V. 654 P. 804 02-02-003-101-011 JANICE E. & EDWARD LONG, JR., TRUSTEES O.R.V. 654 P. 804 02-02-002-000-070 LEXINGTON TRAMK LORAIN & SOCIETY NATIONAL BANK SUPER K-MART - ADDITIONAL OWNER #20050049201 02-02-003-101-043 LEXINGTON TRAMK LORAIN & SOCIETY NATIONAL BANK SUPER K-MART - ADDITIONAL OWNER #20050049201
RECORD PLAT COOPER'S LANDING CLUSTER DEVELOPMENT SUBDIVISION NO. 2	OF PART OF BLACK RIVER ORIGINAL TOWNSHIP LOT NO. 2, TRACT 2 CITY OF LORAIN COUNTY OF LORAIN STATE OF OHIO
SHEET	2
OF	3
JOB NO.	02192



CURVE TABLE						
CURVE	LENGTH	RADIUS	TANGENT	DELTA	CHORD	BEARING
C38	3.41	75.00	1.71	2°36'25"	3.41	N53°32'49"W
C39	17.09	75.00	8.58	13°03'23"	17.05	N61°22'43"W

LEGEND

- ☒ EXISTING MONUMENT BOX
- ⊙ IRON PIPE/ IRON PIN/ 5/8" x 30" KS CAPPED PIN FOUND LABELED "KS ASSOCS INC PROP MARKER"
- ☒ PROPOSED MONUMENT BOX
- 5/8" x 30" KS CAPPED PIN SET LABELED "KS ASSOCS INC PROP MARKER"

200' OHIO EDISON CO. EASEMENT
D.V. 656 P. 531
D.V. 938 P. 262

30' CITY OF AMHERST WATERLINE EASEMENT
D.V. 1272 P. 211

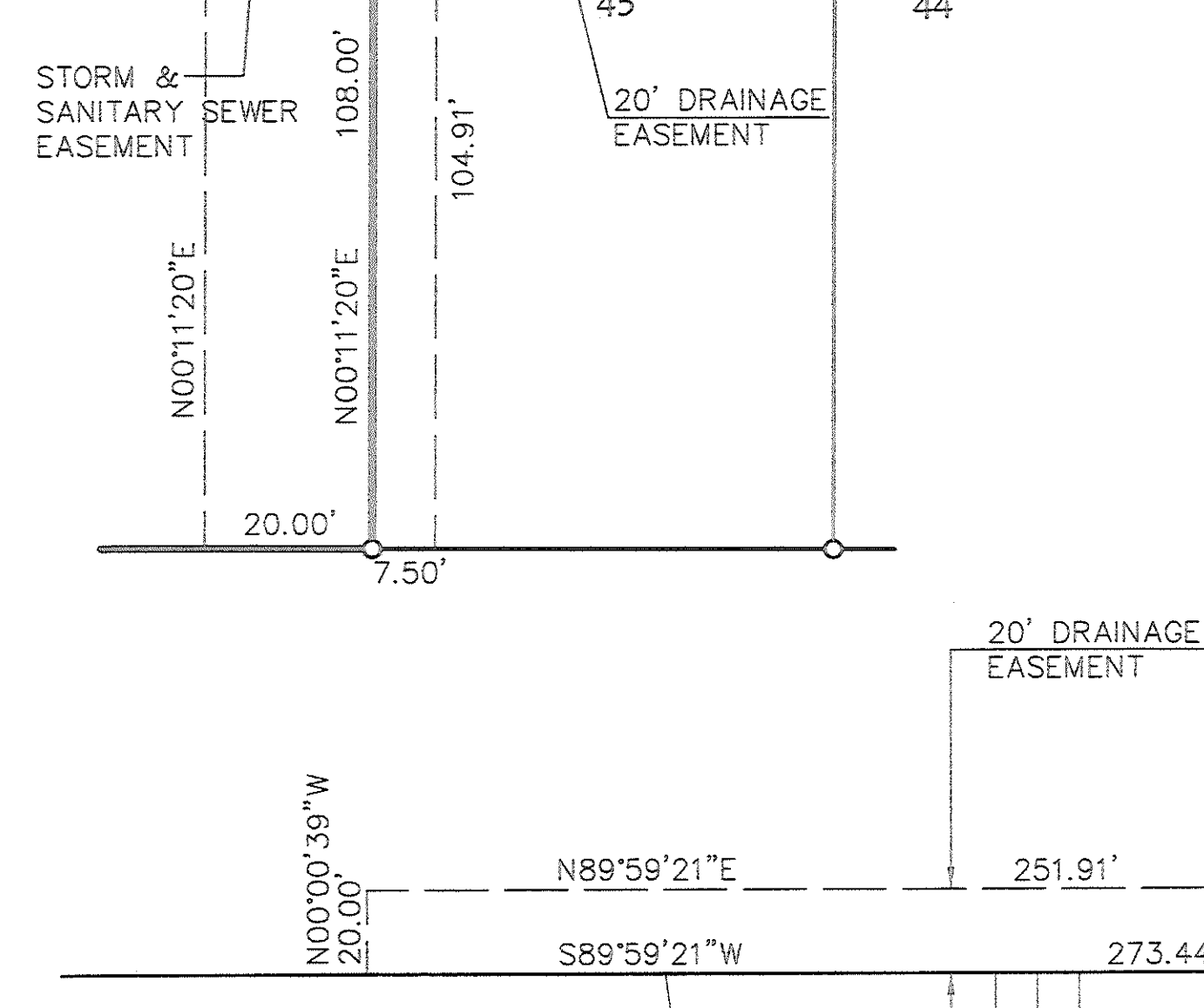
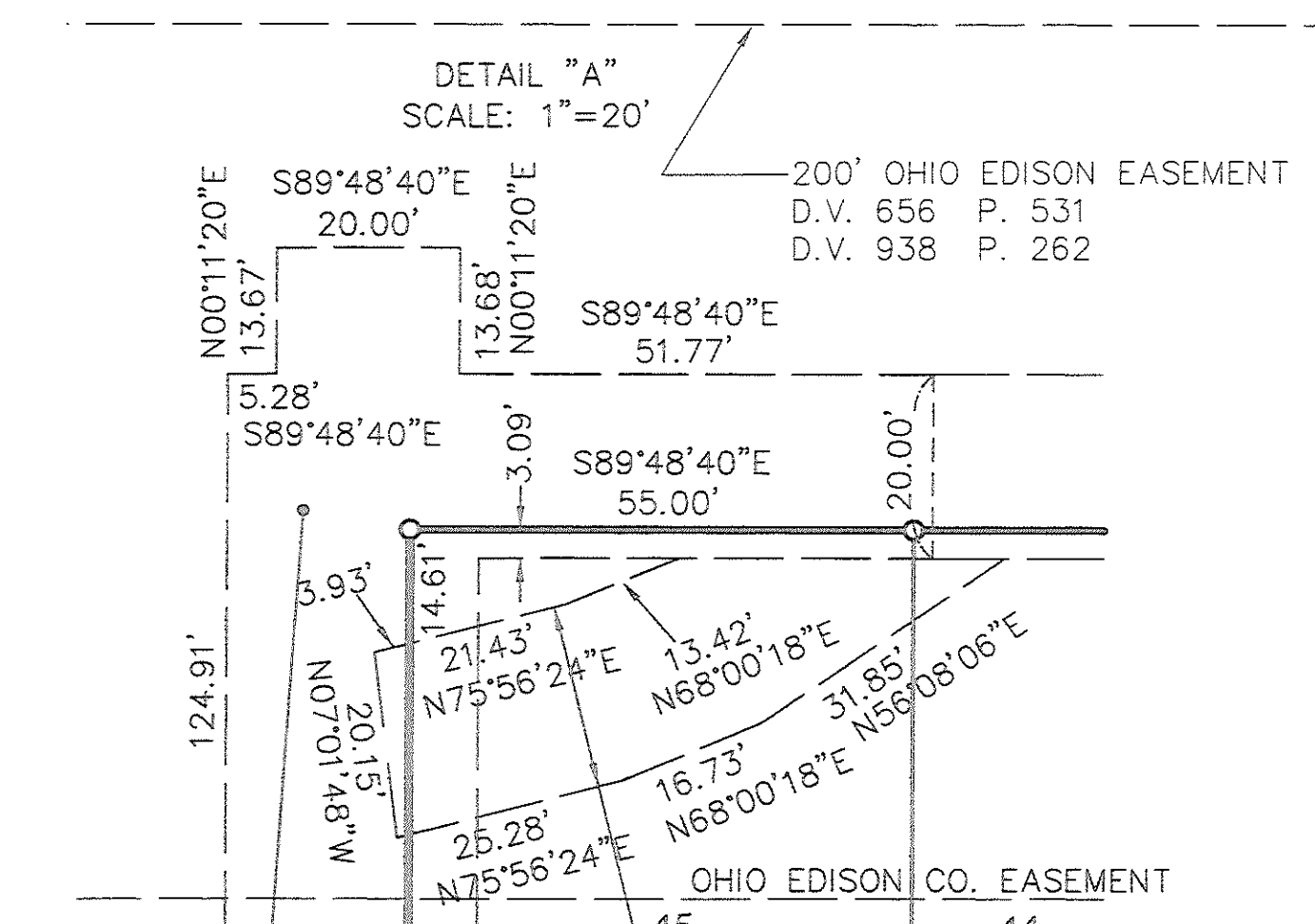
20' DRAINAGE EASEMENT
SEE DETAIL "A"

02-02-002-000-164
STARLAND INVESTMENT CO.
O.R.V. 642 P. 55

02-02-002-000-164
STARLAND INVESTMENT CO.
O.R.V. 642 P. 55

DETAIL "A"
SCALE: 1"=20'

200' OHIO EDISON EASEMENT
D.V. 656 P. 531
D.V. 938 P. 262



CURVE TABLE						
CURVE	LENGTH	RADIUS	TANGENT	DELTA	CHORD	BEARING
C6	56.87	75.00	29.88	43°26'47"	55.52	S35°05'55"W
C7	24.71	25.00	13.47	56°37'59"	23.72	N28°30'19"E
C8	39.27	25.00	25.00	90°00'00"	35.36	N44°48'40"W
C9	39.27	25.00	25.00	90°00'00"	35.36	N44°48'40"W
C10	49.15	25.00	37.51	112°38'27"	41.61	S56°30'33"W
C11	24.67	69.16	12.47	20°26'18"	24.54	N56°57'05"W
C12	121.19	60.00	95.51	115°43'36"	101.61	N72°00'06"W
C13	54.57	100.00	27.99	31°16'08"	53.90	N31°05'53"W
C14	73.70	90.00	39.06	46°55'17"	71.66	S23°16'18"E
C15	18.66	25.00	9.79	42°45'39"	18.23	S45°12'14"E
C16	51.98	130.00	26.34	22°54'32"	51.63	N35°16'41"W
C17	49.14	60.00	26.04	46°55'17"	47.77	S23°16'18"E
C18	98.27	120.00	52.08	46°55'17"	95.55	S23°16'18"E
C19	39.27	25.00	25.00	90°00'00"	35.36	S45°11'20"W
C20	24.71	25.00	13.47	56°37'59"	23.72	S28°07'39"E
C21	383.88	75.00	49.39	29°31'58"	82.50	S89°48'40"E
C22	4.74	130.00	2.37	2°05'28"	4.74	N24°52'09"W
C23	47.23	130.00	23.88	20°49'04"	46.97	N36°19'25"W

CURVE TABLE						
CURVE	LENGTH	RADIUS	TANGENT	DELTA	CHORD	BEARING
C24	21.87	120.00	10.97	10°26'40"	21.84	S41°30'37"E
C25	54.16	120.00	27.55	25°51'36"	53.70	S23°21'29"E
C26	22.24	120.00	11.15	10°37'01"	22.20	S05°07'11"E
C27	56.87	75.00	29.88	43°26'47"	55.52	N34°43'15"W
C28	49.45	75.00	25.66	37°46'46"	48.56	N05°53'31"E
C29	38.83	75.00	19.86	29°39'59"	38.40	N39°36'53"E
C30	44.27	75.00	22.80	33°48'59"	43.63	N71°21'22"E
C31	48.28	75.00	25.01	36°53'06"	47.45	S73°17'35"E
C32	40.15	75.00	20.57	30°40'29"	39.68	S39°30'47"E
C33	49.15	75.00	25.50	37°33'05"	48.28	S05°24'00"E
C34	66.27	60.00	36.97	63°16'50"	62.95	S81°46'31"W
C35	3.41	75.00	1.71	2°36'25"	3.41	S53°32'49"E
C36	17.09	75.00	8.58	13°03'23"	17.05	S61°22'43"E
C37	54.92	60.00	29.55	52°26'45"	53.02	N40°21'41"W

R: 020000 02192 \dat\control\dwg\2-PLAT01.dwg 3/1/2005 4:16:10 PM EST

REVISIONS

DATE	DESCRIPTION
01-22-03	DM

DATE: 01-22-03
DRAWN BY: DM
CITY BY: 2-PLAT01
DWG. NAME: 2-PLAT01
PATH: E:\020000\02192\02192.PLT
JOB NO. 02192

KS ASSOCIATES
8400 E. Main St., Suite 100
Columbus, Ohio 43055
Phone (614) 365-4730
Fax (614) 365-4790
mlk@ksassoc.com
www.ksassoc.com

RECORD PLAT
COOPERS LANDING CLUSTER
DEVELOPMENT SUBDIVISION NO. 2
OF PART OF
BLACK RIVER ORIGINAL TOWNSHIP LOT NO. 2, TRACT 2
CITY OF LORAIN COUNTY OF OHIO

SHEET 3 OF 3