

LEGEND

- 5/8" CAPPED REBAR SET
- IRON PIN FOUND
- ⊕ MONUMENT BOX FOUND

TOTAL AREA PHASE 25
1.0697 AC.

CURVE DATA						
CURVE	RADIUS	LENGTH	TANGENT	CHORD	BEARING	DELTA
C1	25.00'	39.27'	25.00'	35.36'	N48°54'17"E	90°00'00"
C2	89.00'	97.60'	54.36'	92.78'	S35°19'14"W	62°49'55"
C3	24.09'	28.52'	16.20'	26.88'	N52°10'47"W	67°49'53"
C4	111.00'	41.42'	20.95'	41.18'	S56°02'47"W	21°22'49"
C5	289.00'	92.98'	46.90'	92.58'	N57°31'10"E	18°26'05"
C6	289.00'	62.80'	31.52'	62.67'	N29°00'29"E	12°26'59"
C7	111.00'	61.91'	31.78'	61.11'	S38°45'42"W	31°57'26"
C8	89.00'	106.91'	60.97'	100.60'	N57°11'42"E	68°49'27"
C9	311.00'	48.48'	24.29'	48.43'	N35°46'40"E	8°55'51"
C10	311.00'	89.98'	45.31'	89.67'	N58°26'52"E	16°34'40"
C11	311.00'	47.79'	23.94'	47.74'	N54°33'40"E	8°48'16"
C12	311.00'	42.19'	21.13'	42.16'	N62°51'00"E	7°46'24"

CONTINUED ON SHEET 3

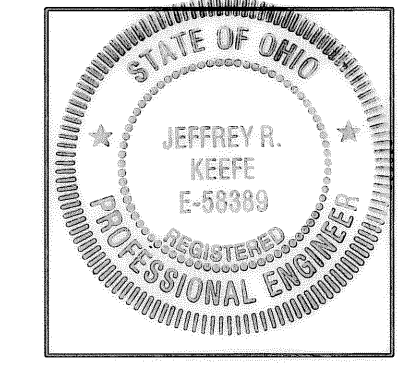
SHEET INDEX

SHEET NO.	DESCRIPTION
1	SURVEY MAP & MISC.
2	SURVEY MAP & MISC. CONTINUED
3	CURVE DATA & OWNERSHIP TABLE
4	FLOOR & FOUNDATION PLANS
5	ELEVATION VIEWS

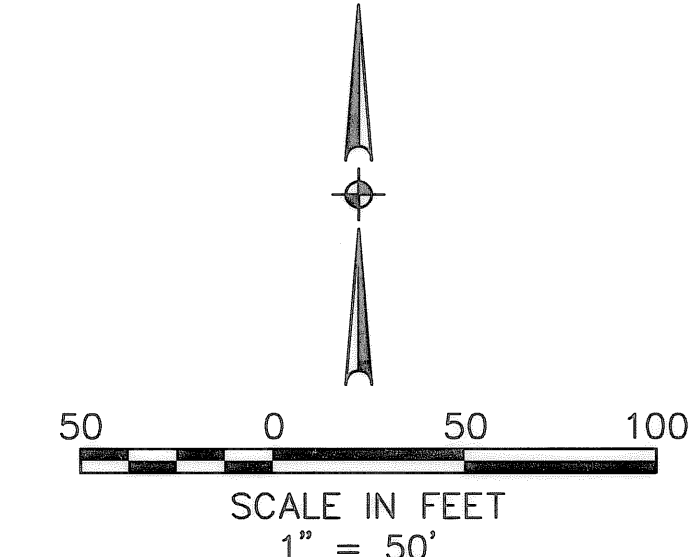
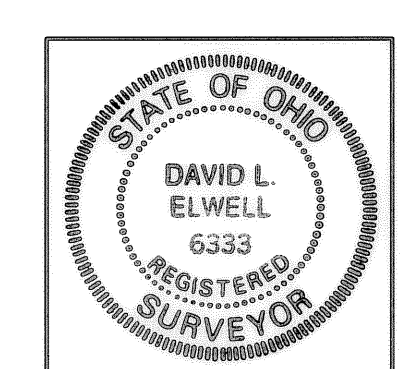
TRANSFERRED
IN COMPLIANCE WITH SSC 315-002
OHIO REV CODE
AUG 3 1 2005
MARK R. STEWART
LORAIN COUNTY AUDITOR

CERTIFICATION
THIS IS TO CERTIFY THAT THE ATTACHED DRAWINGS CORRECTLY REPRESENT THE BUILDINGS AS CONSTRUCTED AND THAT THERE ARE NO ENCROACHMENTS ON ADJACENT PROPERTIES, EXCEPT AS SHOWN.

Jeffrey R. Keefe
JEFFREY R. KEEFE,
PROFESSIONAL ENGINEER NO. 58389



David L. Elwell
DAVID L. ELWELL,
PROFESSIONAL SURVEYOR NO. 6333



* AND A RE-SUBDIVISION OF PART OF STONEHEDGE CONDOMINIUM PHASE 19 (REC. P.V. 79 PP. 29-33)

REVISIONS	DATE	DESCRIPTION	BY
	08-16-05	ORIGINAL ISSUE	BAP

KS ASSOCIATES

KS ASSOCIATES, INC.
260 Burns Road, Suite 100
Elyria, Ohio 44035
Phone (440) 365-4730
Fax (440) 365-4790
mailroom@ksassoc.com
www.ksassoc.com

STONEHEDGE CONDOMINIUMS
PHASE NO. 25

PART OF
CARLISLE TOWNSHIP SECTION NO. 5 *
CITY OF ELYRIA COUNTY OF LORAIN STATE OF OHIO

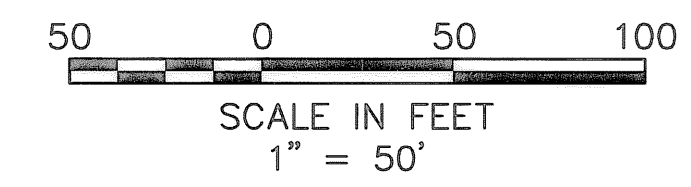
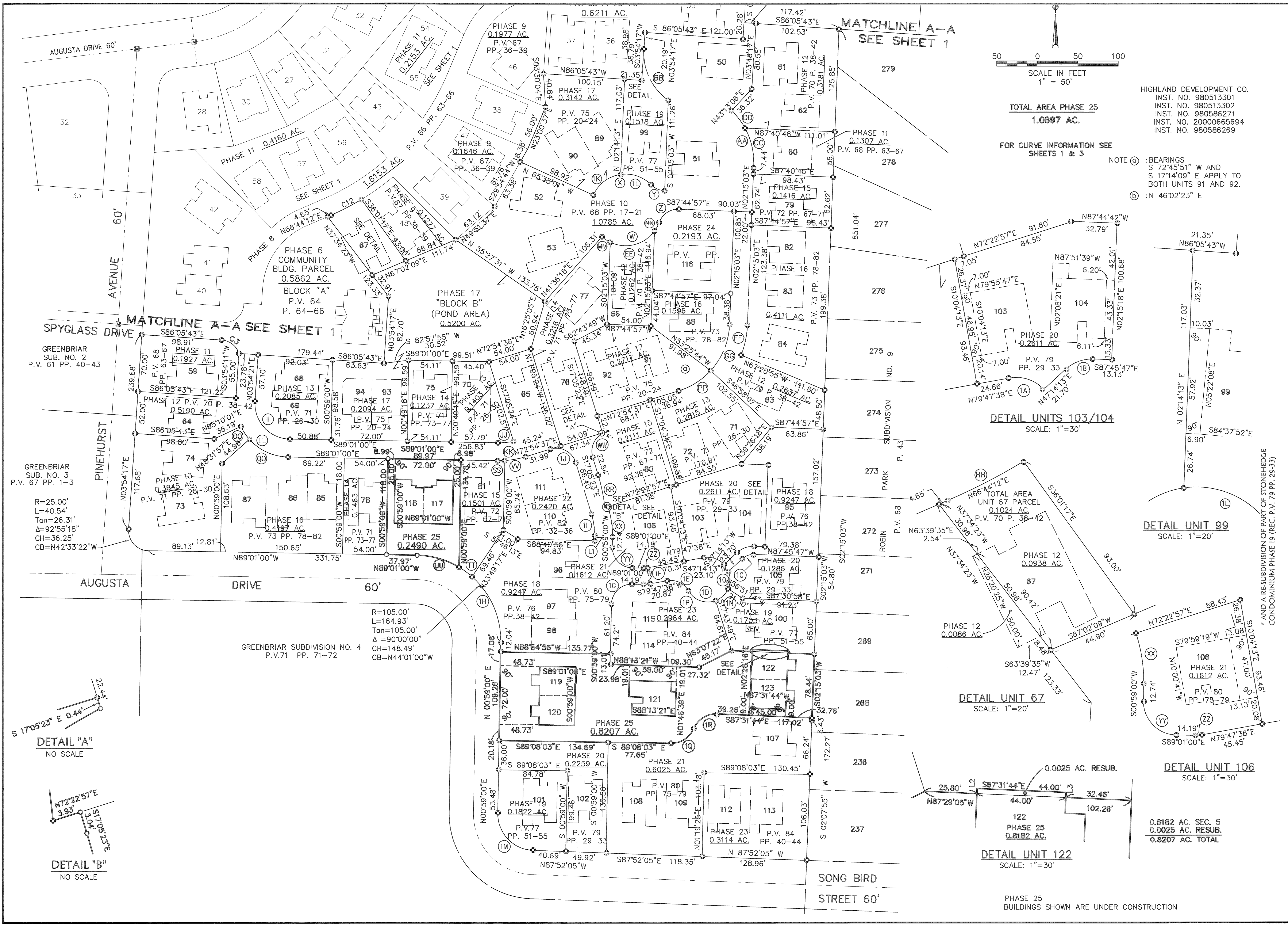
SHEET 1 OF 5
JOB NO. 92424-CP25

DETAIL UNIT 32
NO SCALE

DELTA = 18°21'14"
R = 55.00'
T = 8.89'
A = 17.62'
C = 17.54'
S80°49'23"E

MATCHLINE A-A
SEE SHEET 2

HIGHLAND DEVELOPMENT CO.
INST. NO. 980513301
HIGHLAND DEVELOPMENT CO.
INST. NO. 980513302
HIGHLAND DEVELOPMENT CO.
INST. NO. 980586271

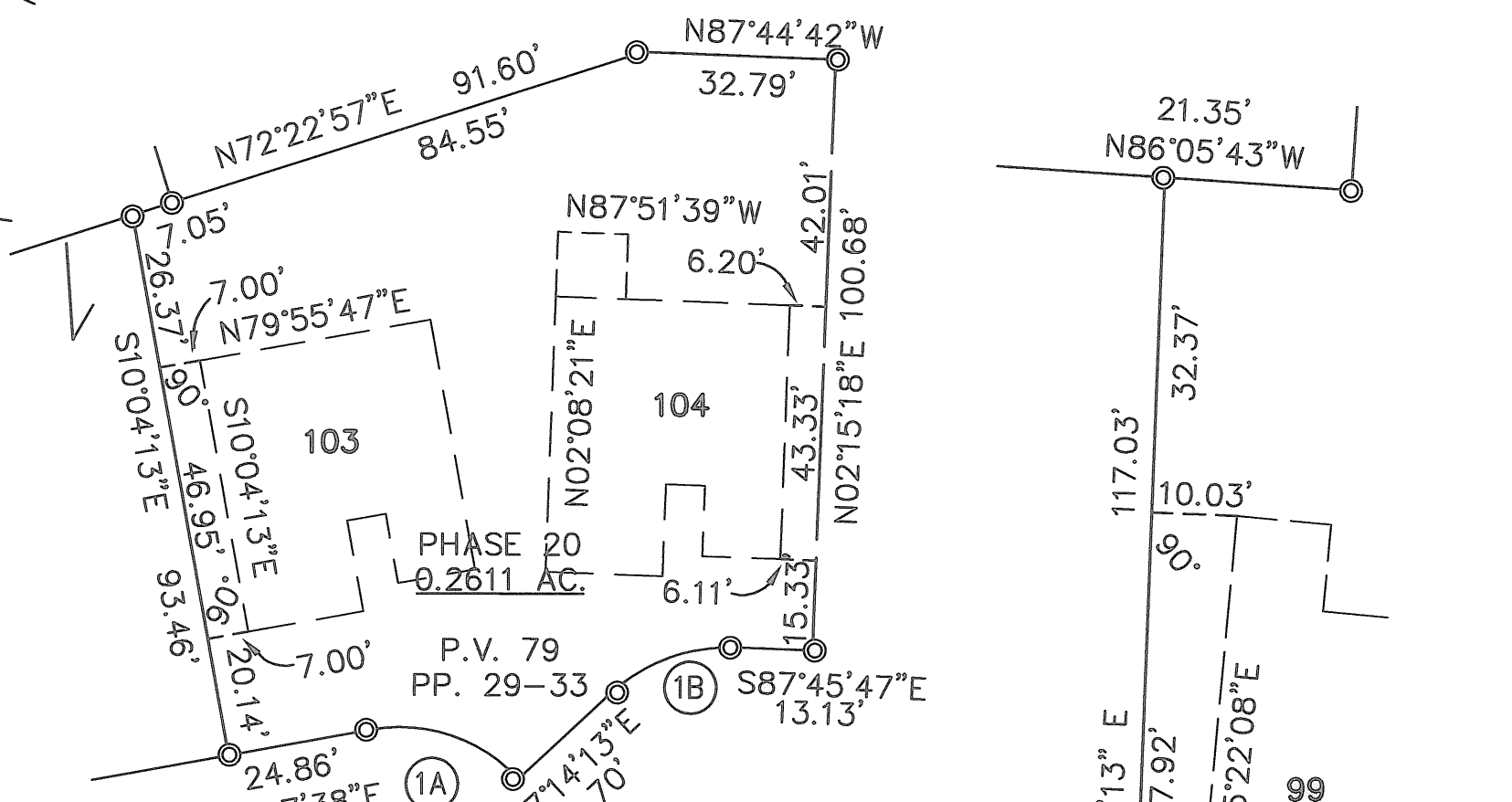


TOTAL AREA PHASE 25
1.0697 AC.

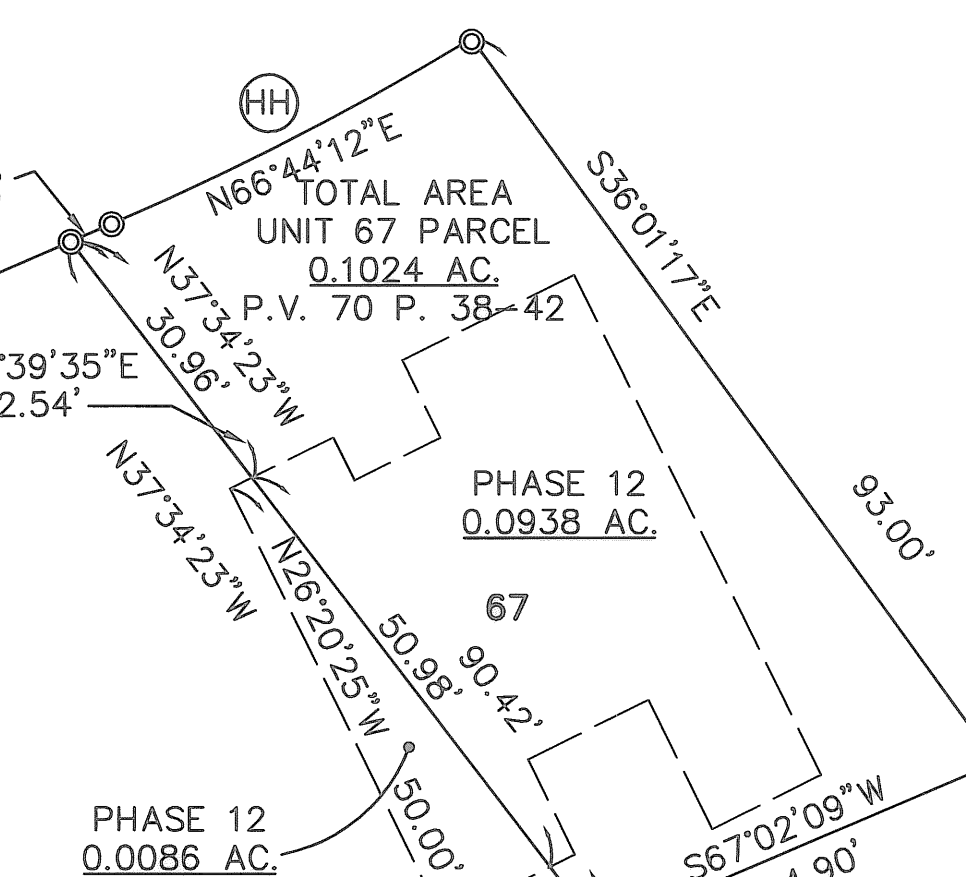
FOR CURVE INFORMATION SEE SHEETS 1 & 3

NOTE (C) : BEARINGS
S 72°45'51" W AND
S 17°14'09" E APPLY TO
BOTH UNITS 91 AND 92.
(B) : N 46°02'23" E

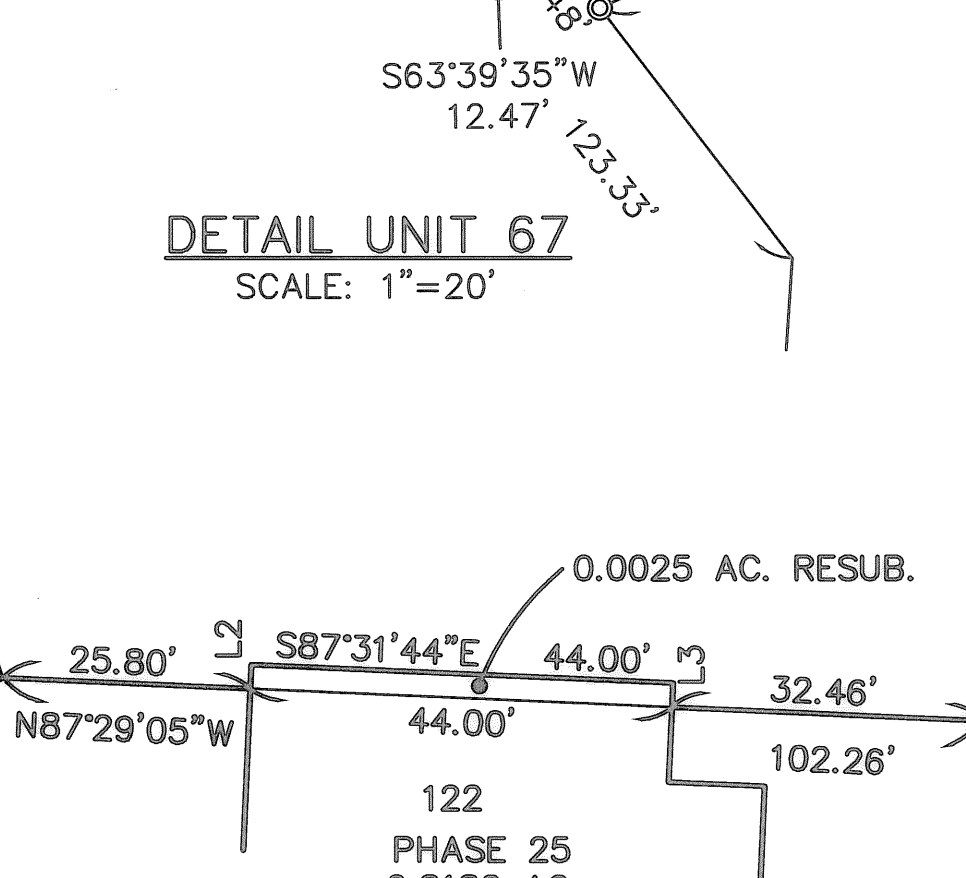
HIGHLAND DEVELOPMENT CO.
INST. NO. 980513301
INST. NO. 980513302
INST. NO. 980586271
INST. NO. 20000665694
INST. NO. 980586269



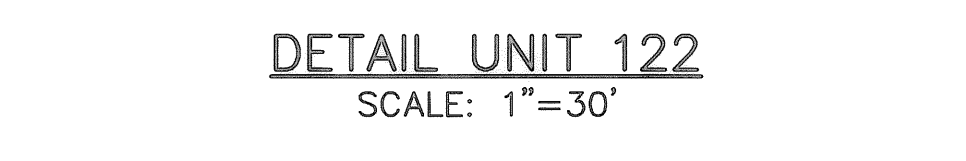
DETAIL UNITS 103/104
SCALE: 1"=30'



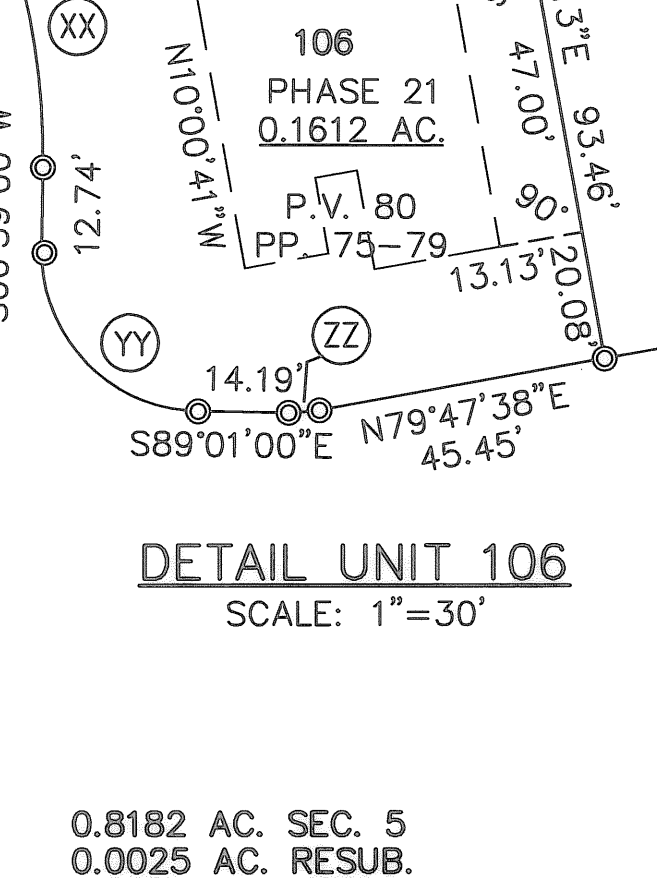
DETAIL UNIT 99
SCALE: 1"=20'



DETAIL UNIT 67
SCALE: 1"=20'



DETAIL UNIT 122
SCALE: 1"=30'



DETAIL UNIT 106
SCALE: 1"=30'

0.8182 AC. SEC. 5
0.0025 AC. RESUB.
0.8207 AC. TOTAL

PHASE 25
BUILDINGS SHOWN ARE UNDER CONSTRUCTION

GREENBRIAR
SUB. NO. 2
P.V. 61 PP. 40-43

GREENBRIAR
SUB. NO. 3
P.V. 67 PP. 1-3

R=25.00'
L=40.54'
Tan=26.31'
Δ=92°55'18"
CH=36.25'
CB=N42°33'22"W

GREENBRIAR SUBDIVISION NO. 4
P.V. 71 PP. 71-72

R=105.00'
L=164.93'
Tan=105.00'
Δ=90°00'00"
CH=148.49'
CB=N44°01'00"W

DETAIL "A"
NO SCALE

DETAIL "B"
NO SCALE

BY	DATE	DESCRIPTION

REVISIONS

HS ASSOCIATES, INC.
840 Burns Road, Suite 100
Elyria, Ohio 44035
Phone (440) 365-4730
Fax (440) 365-4790
www.hsassoc.com

STONEHEDGE CONDOMINIUMS
PHASE NO. 25

PART OF
CARLISE TOWNSHIP SECTION NO. 5 *
CITY OF ELYRIA, COUNTY OF LORAIN, STATE OF OHIO

SHEET 2	OF 5
JOB NO.	92424-CP25

08-16-05 ORIGINAL ISSUE

CURVE DATA

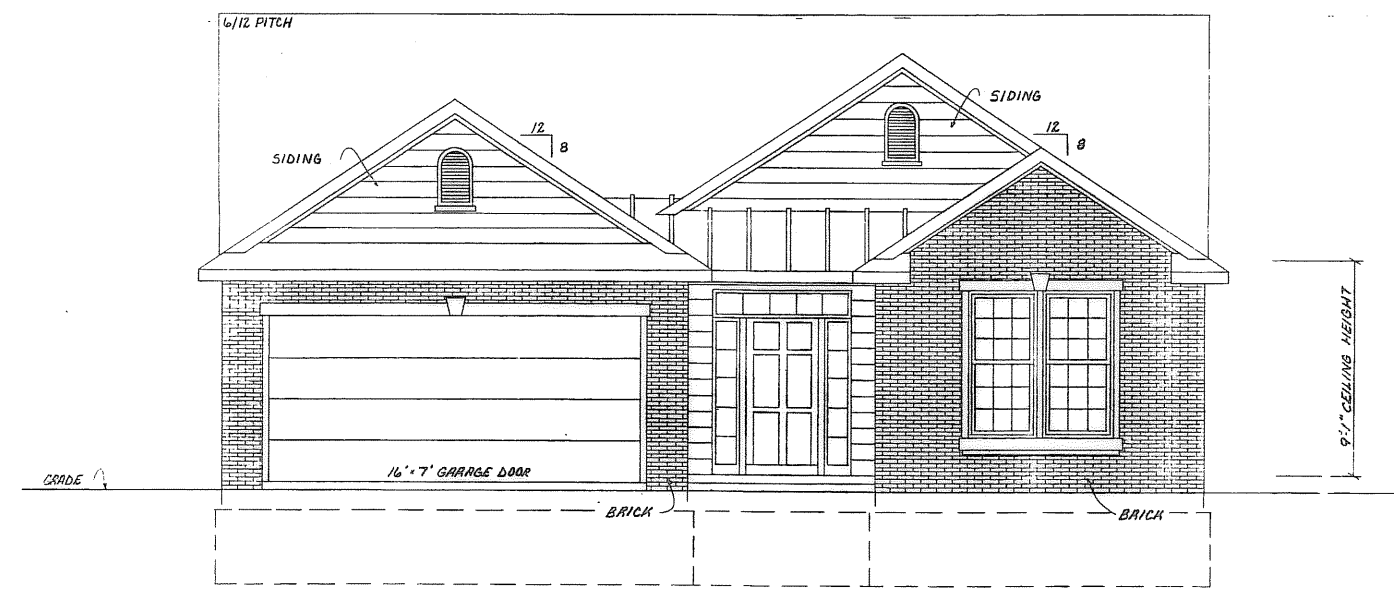
A Δ = 38°07'27" R = 25.00' T = 8.64' L = 16.63' C = 16.33' CB = S25°28'22"E	N Δ = 20°15'21" R = 190.00' T = 33.94' L = 67.17' C = 66.82' CB = N72°54'03"E	AA Δ = 51°10'38" R = 87.45' T = 41.88' L = 78.11' C = 75.54' CB = S21°11'35"E	MM R=44.00' L=12.25' Tan=6.16' Δ=15°57'06" CH=12.21' CB=S56°22'15"E	XX R=111.00' L=35.01' Tan=17.65' Δ=18°04'23" CH=34.87' CB=S08°03'11"E	II R=89.00' L=28.07' Tan=14.15' Δ=18°04'23" CH=27.96' CB=N08°03'11"W
B Δ = 80°47'16" R = 130.00' T = 110.61' L = 183.30' C = 168.49' CB = S42°38'06"W	O Δ = 56°14'17" R = 190.00' T = 101.53' L = 186.49' C = 179.10' CB = N54°54'35"E	BB Δ = 58°56'55" R = 71.00' T = 40.13' L = 73.05' C = 69.87' CB = N25°34'00"W	NN R=44.00' L=12.03' Tan=6.05' Δ=15°39'39" CH=11.99' CB=N28°18'46"E	YY R=25.00' L=39.27' Tan=25.00' Δ=90°00'00" CH=35.36' CB=S44°01'00"E	IJ R=25.00' L=39.27' Tan=25.00' Δ=90°00'00" CH=35.36' CB=N62°05'23"W
C Δ = 24°32'58" R = 190.00' T = 41.34' L = 81.41' C = 80.79' CB = N14°30'57"E	P Δ = 32°18'52" R = 66.00' T = 19.12' L = 37.22' C = 36.73' CB = N77°00'57"W	CC Δ = 33°20'33" R = 87.45' T = 26.19' L = 50.89' C = 50.18' CB = S12°16'32"E	OO R=66.00' L=19.04' Tan=9.59' Δ=16°31'41" CH=18.97' CB=S33°46'12"E	ZZ R=25.00' L=4.88' Tan=2.45' Δ=11°11'22" CH=4.87' CB=N85°23'19"E	1K R=44.00' L=44.13' Tan=24.12' Δ=57°27'39" CH=42.30' CB=N53°08'48"W
D Δ = 40°05'31" R = 25.00' T = 9.12' L = 17.49' C = 17.14' CB = N13°39'13"E	Q Δ = 26°48'49" R = 66.00' T = 15.73' L = 30.89' C = 30.81' CB = N17°49'23"W	DD Δ = 17°50'05" R = 87.45' T = 13.72' L = 27.22' C = 27.11' CB = S37°51'51"E	PP R=89.00' L=47.22' Tan=24.18' Δ=30°24'05" CH=46.67' CB=S57°42'35"W	1A R=27.50' L=27.57' Tan=15.07' Δ=57°27'05" CH=26.43' CB=S71°28'49"E	1L R=44.00' L=41.04' Tan=22.15' Δ=53°26'07" CH=39.56' CB=N71°24'19"W
E Δ = 53°07'38" R = 25.00' T = 12.50' L = 23.18' C = 22.36' CB = N60°15'48"E	R Δ = 22°39'54" R = 190.00' T = 38.08' L = 75.16' C = 74.67' CB = N38°07'23"E	EE R=44.00' L=61.06' Tan=36.60' Δ=79°30'36" CH=56.28' CB=N75°53'54"E	QQ R=66.00' L=54.12' Tan=28.69' Δ=46°58'57" CH=52.62' CB=S65°31'31"E	1B R=30.00' L=23.08' Tan=12.14' Δ=44°04'16" CH=22.51' CB=N70°12'06"E	1M R=45.00' L=69.78' Tan=44.11' Δ=88°51'05" CH=63.00' CB=N43°26'32"W
F Δ = 14°39'14" R = 200.00' T = 25.72' L = 51.15' C = 51.01' CB = N16°05'46"E	S Δ = 13°19'02" R = 190.00' T = 22.18' L = 44.16' C = 44.06' CB = N56°06'51"E	FF R=111.00' L=37.75' Tan=19.06' Δ=19°29'03" CH=37.57' CB=N11°59'35"E	RR RR R=211.00' L=40.81' Tan=20.47' Δ=11°04'56" CH=40.75' CB=S11°32'55"E	1C R=20.00' L=15.71' Tan=8.28' Δ=45°00'00" CH=15.31' CB=S69°44'13"W	1N R=27.50' L=21.74' Tan=11.47' Δ=45°17'23" CH=21.18' CB=N46°43'06"E
G Δ = 26°29'29" R = 55.00' T = 12.95' L = 25.43' C = 25.20' CB = N76°45'16"W	T Δ = 13°46'24" R = 190.00' T = 22.95' L = 45.67' C = 45.56' CB = N69°39'34"E	GG R=89.00' L=62.53' Tan=32.62' Δ=40°15'29" CH=61.26' CB=S22°22'47"W	SS R=111.00' L=8.59' Tan=4.30' Δ=4°26'03" CH=8.59' CB=N88°45'59"E	1D R=27.50' L=82.44' Tan=381.87' Δ=171°45'43" CH=54.86' CB=S64°26'30"W	1O R=27.50' L=21.84' Tan=11.54' Δ=45°30'46" CH=21.27' CB=N01°19'02"E
H Δ = 8°47'02" R = 111.00' T = 8.53' L = 17.02' C = 17.00' CB = S82°26'06"W	U Δ = 29°37'44" R = 66.00' T = 17.46' L = 34.13' C = 33.75' CB = N46°02'39"W	HH R=311.00' L=42.19' Tan=21.13' Δ=7°46'24" CH=42.16' CB=N62°51'00"E	TT R=105.00' L=20.00' Tan=10.03' Δ=10°54'51" CH=19.97' CB=N53°52'53"W	1E R=25.00' L=30.77' Tan=17.68' Δ=70°31'44" CH=28.87' CB=N64°56'30"W	1P R=27.50' L=38.86' Tan=23.47' Δ=80°57'37" CH=35.70' CB=S70°09'25"E
I Δ = 0°51'42" R = 589.00' T = 4.43' L = 8.86' C = 8.86' CB = N78°28'26"E	V Δ = 90°00'00" R = 25.00' T = 25.00' L = 39.27' C = 35.36' CB = S48°54'17"W	II R=44.00' L=71.36' Tan=46.30' Δ=92°55'21" CH=63.79' CB=S42°33'20"E	UU R=105.00' L=54.39' Tan=27.82' Δ=29°40'41" CH=8.77' CB=N84°46'11"E	1F R=45.00' L=8.79' Tan=4.41' Δ=11°11'22" CH=8.77' CB=S85°23'19"W	1Q R=30.00' L=35.29' Tan=20.01' Δ=67°23'58" CH=33.29' CB=S57°09'58"W
J Δ = 2°48'19" R = 589.00' T = 14.42' L = 28.84' C = 28.84' CB = N85°25'27"E	W Δ = 111°07'22" R = 44.00' T = 64.17' L = 85.34' C = 72.58' CB = S76°02'37"W	JJ R=89.00' L=19.30' Tan=9.69' Δ=12°25'38" CH=19.27' CB=N84°46'11"E	VV R=111.00' L=26.42' Tan=13.27' Δ=13°38'20" CH=26.36' CB=N79°43'47"E	1G R=25.00' L=39.27' Tan=25.00' Δ=90°00'00" CH=35.36' CB=S45°59'00"W	1R R=30.00' L=36.13' Tan=20.62' Δ=69°00'17" CH=33.99' CB=S57°58'07"W
K Δ = 97°04'40" R = 44.00' T = 49.80' L = 74.55' C = 65.95' CB = S44°38'03"E	X Δ = 110°53'45" R = 44.00' T = 63.90' L = 85.16' C = 72.48' CB = N79°51'52"E	KK R=111.00' L=35.01' Tan=17.65' Δ=18°04'23" CH=34.87' CB=S81°56'49"W	WW R=25.00' L=34.59' Tan=20.71' Δ=79°15'49" CH=31.89' CB=N22°32'32"E	1H R=105.00' L=90.54' Tan=48.30' Δ=49°24'27" CH=87.76' CB=N23°43'14"W	
L Δ = 88°45'25" R = 66.00' T = 64.58' L = 102.24' C = 92.32' CB = N48°47'41"W	Y Δ = 43°03'41" R = 25.00' T = 9.86' L = 18.79' C = 18.35' CB = S66°13'06"E	LL R=66.00' L=73.16' Tan=40.85' Δ=63°30'38" CH=69.47' CB=N57°15'41"W			
M Δ = 08°19'15" R = 66.00' T = 4.80' L = 9.59' C = 9.58' CB = N00°15'21"W	Z Δ = 71°46'07" R = 25.00' T = 18.09' L = 31.31' C = 29.31' CB = S56°22'00"W				

OWNERSHIP PERCENTAGES

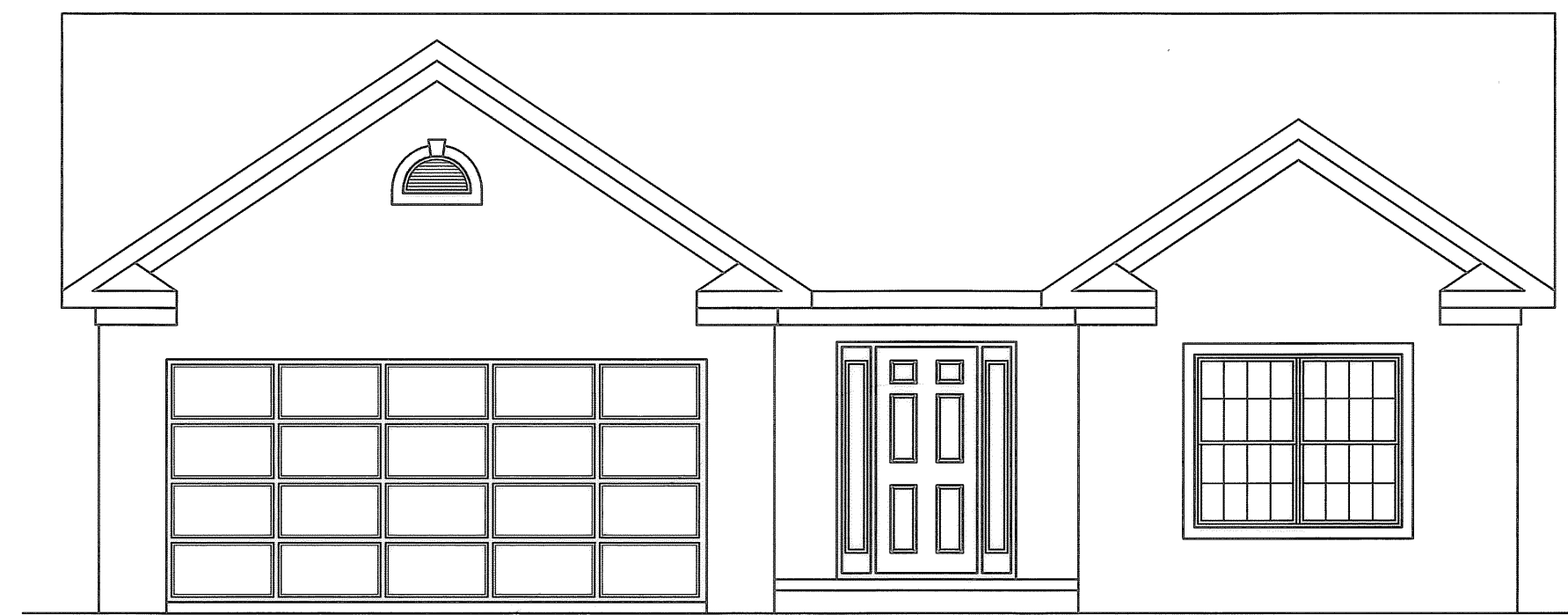
UNIT NO.	SQ. FT.	ELEV. F.F.	% OWNERSHIP	UNIT NO.	SQ. FT.	ELEV. F.F.	% OWNERSHIP
1	1661.92	756.59	0.8938	77	1736.17	756.16	0.9338
2	1602.38	756.59	0.8618	78	1520.92	757.05	0.8180
3	1191.64	755.86	0.6409	79	1520.92	754.21	0.8180
4	1214.22	755.86	0.6531	80	1520.92	756.02	0.8180
5	1602.38	757.42	0.8618	81	1520.92	756.87	0.8180
6	1661.92	757.42	0.8938	82	1207.46	754.46	0.6494
7	1658.47	756.00	0.8920	83	1207.46	754.66	0.6494
8	1661.92	756.00	0.8938	84	1520.92	754.94	0.8180
9	1196.28	756.42	0.6434	85	1317.98	755.96	0.7089
10	1213.70	756.42	0.6528	86	2064.94	755.96	1.0448
11	1196.28	756.76	0.6434	87	1730.49	755.63	0.9307
12	1213.70	756.76	0.6528	88	1388.87	754.91	0.7470
13	1599.80	754.87	0.8604	89	1940.62	755.37	1.0437
14	1393.43	756.44	0.7494	90	2053.62	755.37	1.1045
15	1713.47	756.37	0.9216	91	1207.46	754.86	0.6494
16	1733.47	756.37	0.9323	92	1520.92	756.77	0.8180
17	1658.47	757.40	0.8920	93	1942.62	755.42	1.0448
18	1661.92	757.41	0.8938	94	1936.39	755.42	1.0415
19	1196.28	755.58	0.6434	95	1730.49	755.40	0.9307
20	1393.43	757.01	0.7494	96	1207.46	756.65	0.6494
21	1393.43	757.56	0.7494	97	2072.42	758.91	1.1146
22	1393.43	754.55	0.7494	98	1940.62	758.91	1.0437
23	1196.28	754.53	0.6434	99	1332.09	754.42	0.7165
24	1213.70	754.54	0.6528	100	1600.25	756.80	0.8607
25	1658.47	758.13	0.8920	101	1520.92	756.44	0.8180
26	1661.92	758.13	0.8938	102	1520.92	756.80	0.8180
27	1393.43	755.19	0.7494	103	1207.46	755.72	0.6494
28	1393.43	754.43	0.7494	104	1207.46	755.45	0.6494
29	1393.43	757.07	0.7494	105	1388.87	756.52	0.7470
30	1196.28	756.16	0.6434	106	1207.46	755.59	0.6494
31	1196.28	755.32	0.6434	107	1388.87	757.82	0.7470
32	1393.43	756.45	0.7494	108	1520.92	757.07	0.8180
33	1393.43	756.64	0.7494	109	1207.46	757.07	0.6494
34	1213.70	753.83	0.6528	110	1318.11	755.25	0.7089
35	1393.43	753.61	0.7494	111	1940.84	755.25	1.0439
36	1393.43	754.43	0.7494	112	1207.46	757.32	0.6494
37	1717.06	754.06	0.9235	113	1207.46	757.05	0.6494
38	1717.06	754.20	0.9235	114	1646.39	756.68	0.8855
39	1717.06	755.50	0.9235	115	1646.39	756.68	0.8855
40	1661.92	756.29	0.8938	116	1672.01	757.45	0.8993
41	1658.47	756.29	0.8920	117	1318.11	756.96	0.7089
42	1717.06	755.93	0.9235	118	1318.11	756.71	0.7089
43	1393.43	754.62	0.7494	119	1646.39	756.18	0.8855
44	1717.06	754.78	0.9235	120	1646.39	756.18	0.8855
45	1717.06	755.45	0.9235	121	1672.01	758.03	0.8993
46	1253.34	754.10	0.6741	122	1646.39	757.45	0.8855
47	1705.23	756.45	0.9171	123	1646.39	757.45	0.8855
48	1573.19	755.60	0.8461				
49	1705.23	755.96	0.9171				
50	1705.23	755.61	0.9171				
51	1417.96	753.78	0.7626				
52	1928.15	756.29	1.0370				
53	1928.15	755.93	1.0370				
54	1207.46	754.58	0.6494				
55	1207.46	754.58	0.6494				
56	1393.43	754.54	0.7494				
57	1393.43	756.42	0.7494				
58	1207.46	754.62	0.6494				
59	1717.06	755.09	0.9235				
60	1207.46	753.81	0.6494				
61	1389.04	755.51	0.7471				
62	1207.46	753.98	0.6494				
63	1335.42	754.88	0.7182				
64	1717.06	755.31	0.9235				
65	1520.92	755.63	0.8180				
66	1600.25	755.95	0.8607				
67	1520.92	755.20	0.8180				
68	2053.62	755.47	1.1045				
69	1317.98	755.47	0.7089				
70	1717.06	752.12	0.9235				
71	1520.92	754.64	0.8180				
72	1600.25	756.07	0.8607				
73	1335.42	755.62	0.7182				
74	1520.92	755.40	0.8180				
75	1736.17	756.82	0.9338				
76	1520.92	756.89	0.8180				
				TOTAL	185,929.05 SF		100.00%

NOTE: REFER TO CONDOMINIUM PLAT AMENDMENT INST. #2006076390 (REVISION TO UNIT 115)

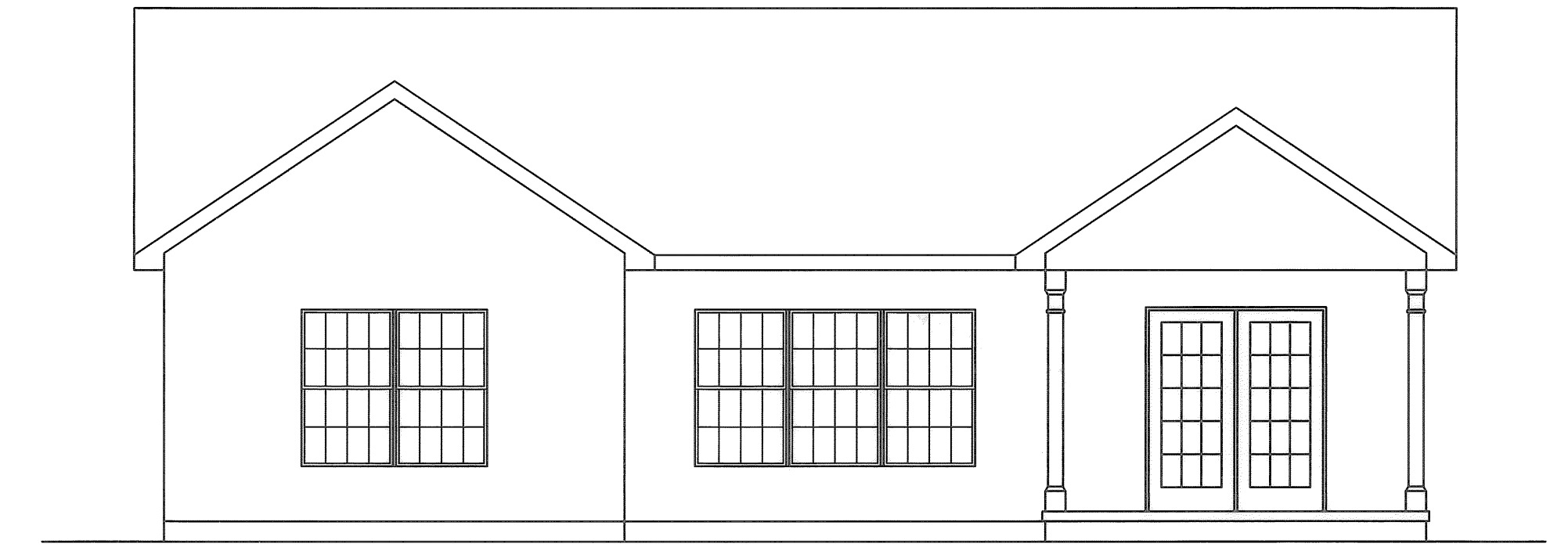
* AND A RE-SUBDIVISION OF PART



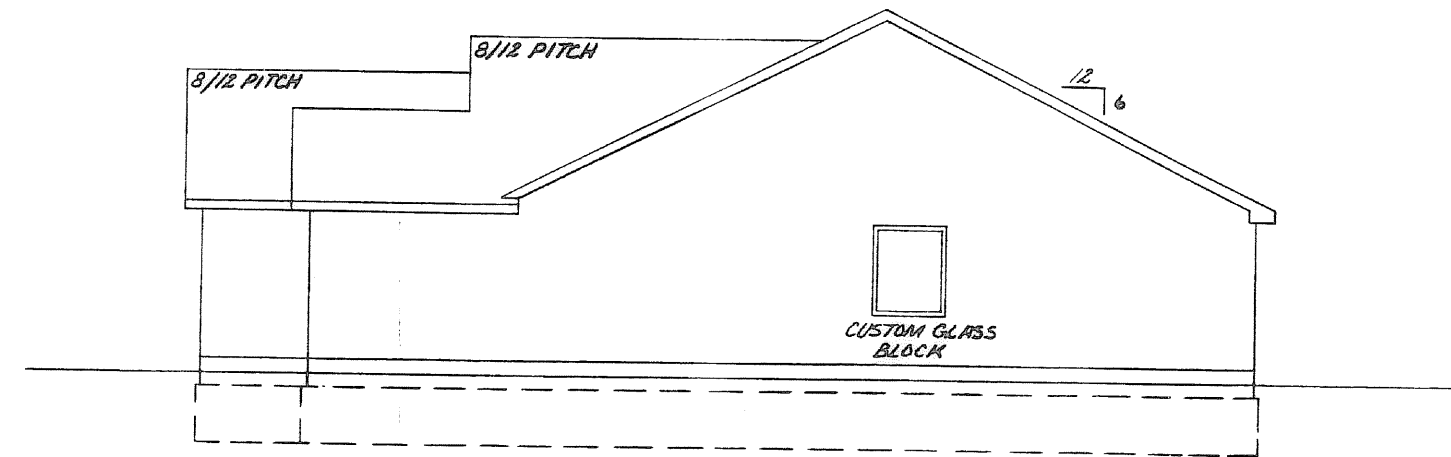
FRONT ELEVATION
CAMBRIDGE MODEL



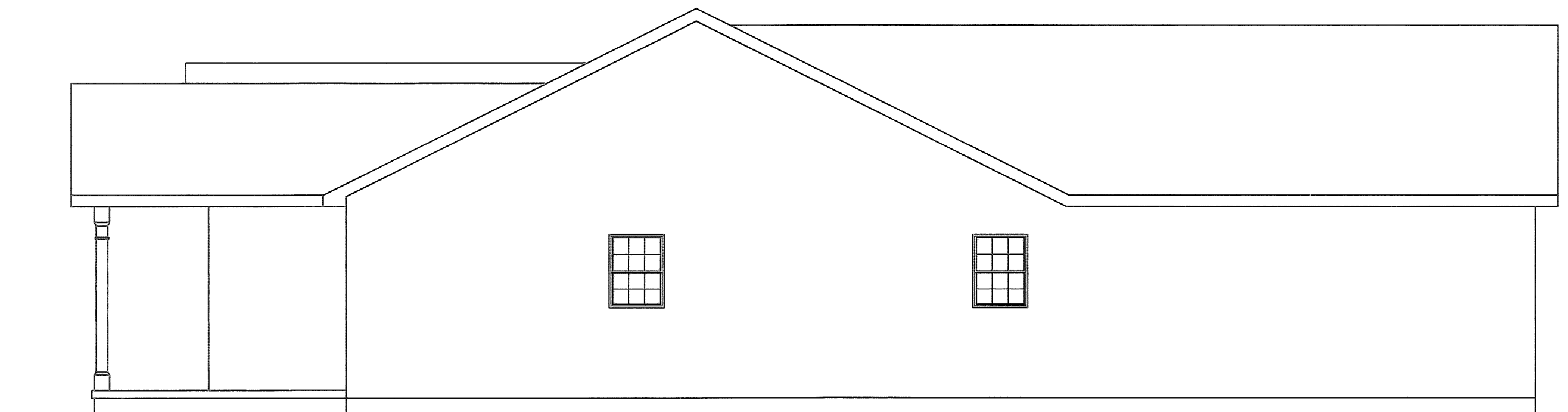
FRONT ELEVATION



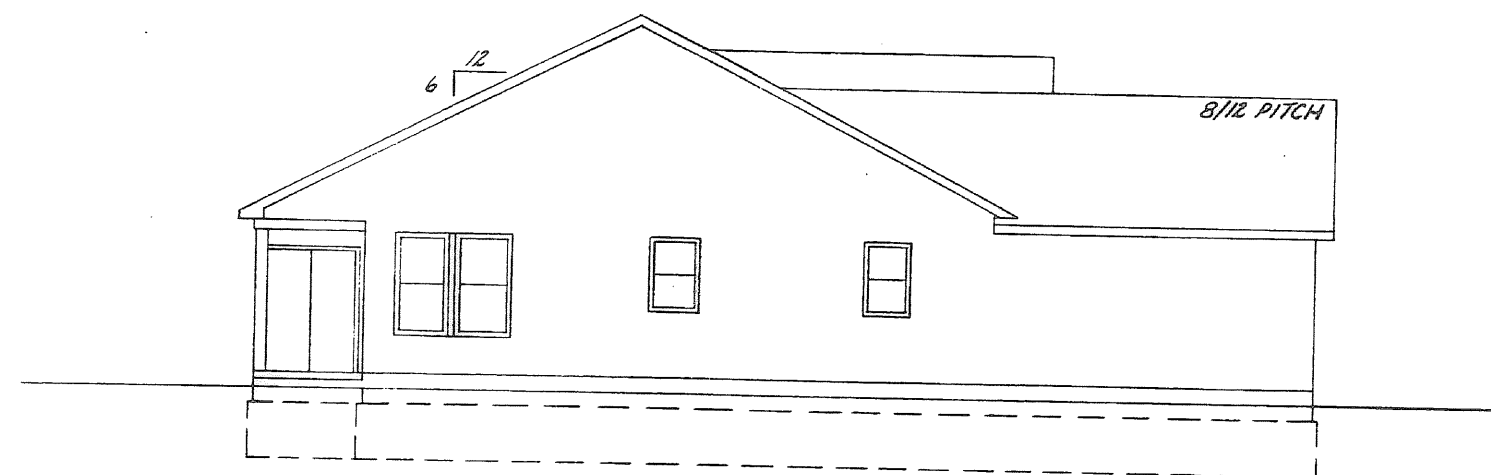
REAR ELEVATION



RIGHT SIDE ELEVATION

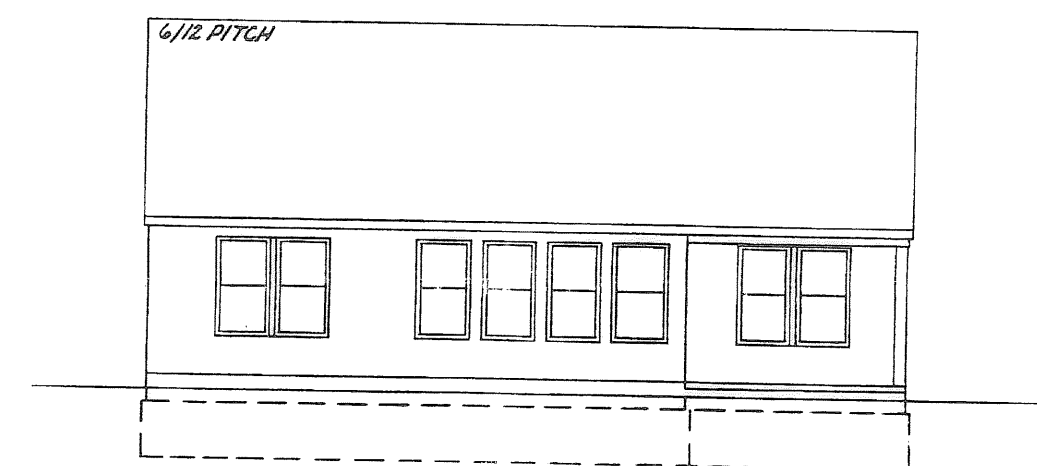


LEFT SIDE ELEVATION

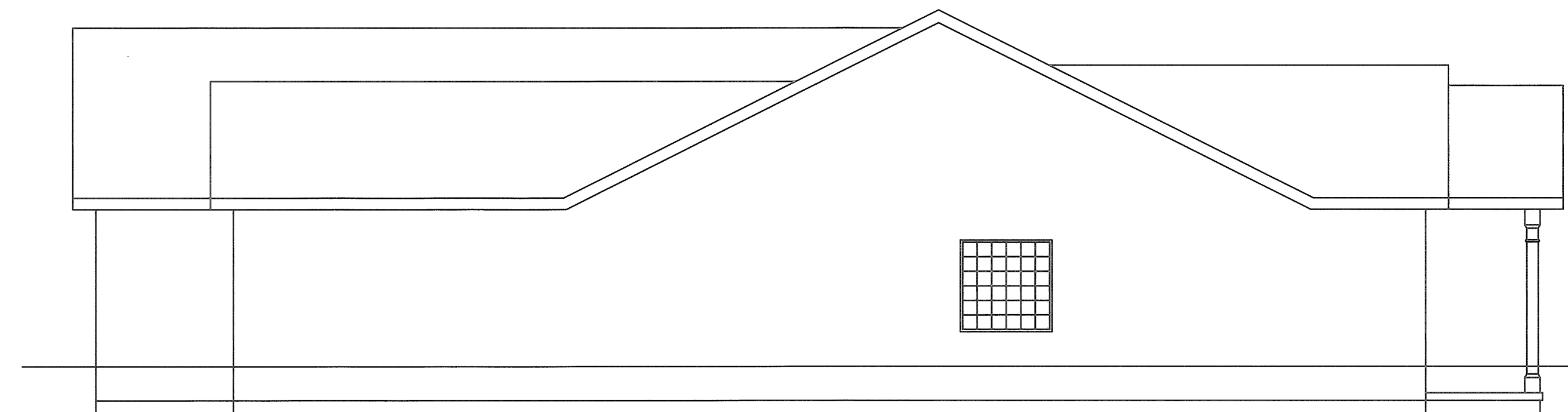


LEFT SIDE ELEVATION

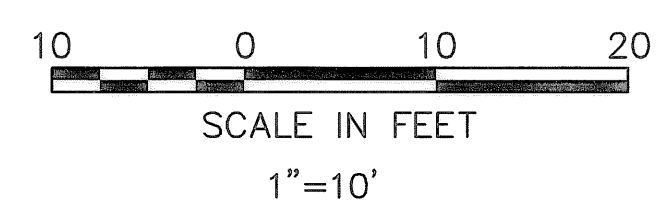
NOTE: ELEVATION VIEWS SHOWN ARE TYPICAL FOR A SELECTED UNIT IN OVERALL SITE. INDIVIDUAL VARIATIONS SUBJECT TO MODEL TYPE GARAGE ORIENTATION UNIT REVERSAL, SINGLE UNIT CONSTRUCTION, ETC. BUILDINGS ARE UNDER CONSTRUCTION.



REAR ELEVATION



RIGHT SIDE ELEVATION



UNIT 120

* AND A RE-SUBDIVISION OF PART OF STONEHEDGE CONDOMINIUM PHASE 19 (REC. P.V. 79 PP. 29-33)

REVISIONS	DATE	DESCRIPTION	BY
	08-08-05	ORIGINAL ISSUE	BAP

KS ASSOCIATES, INC.
260 Burns Road, Suite 100
Elyria, Ohio 44035
Phone (440) 365-4730
Fax (440) 365-4790
mailroom@ksassoc.com
www.ksassoc.com

STONEHEDGE CONDOMINIUMS
PHASE NO. 25 *

ELEVATION VIEWS

SHEET
5 OF
5

JOB NO.

92424-CP25