

LEGEND

- 5/8" CAPPED REBAR SET
- IRON PIN FOUND
- ⊕ MONUMENT BOX FOUND

TOTAL AREA PHASE 23
0.6078 AC.

CURVE DATA						
CURVE	RADIUS	LENGTH	TANGENT	CHORD	BEARING	DELTA
C1	25.00'	39.27'	25.00'	35.36'	N48°54'17"E	90°00'00"
C2	89.00'	97.60'	54.36'	92.78'	S35°19'14"W	62°49'55"
C3	24.09'	28.52'	16.20'	26.88'	N52°10'47"W	67°49'53"
C4	111.00'	41.42'	20.95'	41.18'	S56°02'47"W	21°22'49"
C5	289.00'	92.98'	46.90'	92.58'	N57°31'10"E	18°26'05"
C6	289.00'	62.80'	31.52'	62.67'	N29°00'29"E	12°26'59"
C7	111.00'	61.91'	31.78'	61.11'	S38°45'42"W	31°57'26"
C8	89.00'	106.91'	60.97'	100.60'	N57°11'42"E	68°49'27"
C9	311.00'	48.48'	24.29'	48.43'	N35°46'40"E	8°55'51"
C10	311.00'	89.98'	45.31'	89.67'	N58°26'52"E	16°34'40"
C11	311.00'	47.79'	23.94'	47.74'	N54°33'40"E	8°48'16"
C12	311.00'	42.19'	21.13'	42.16'	N62°51'00"E	7°46'24"

CONTINUED ON SHEET 3

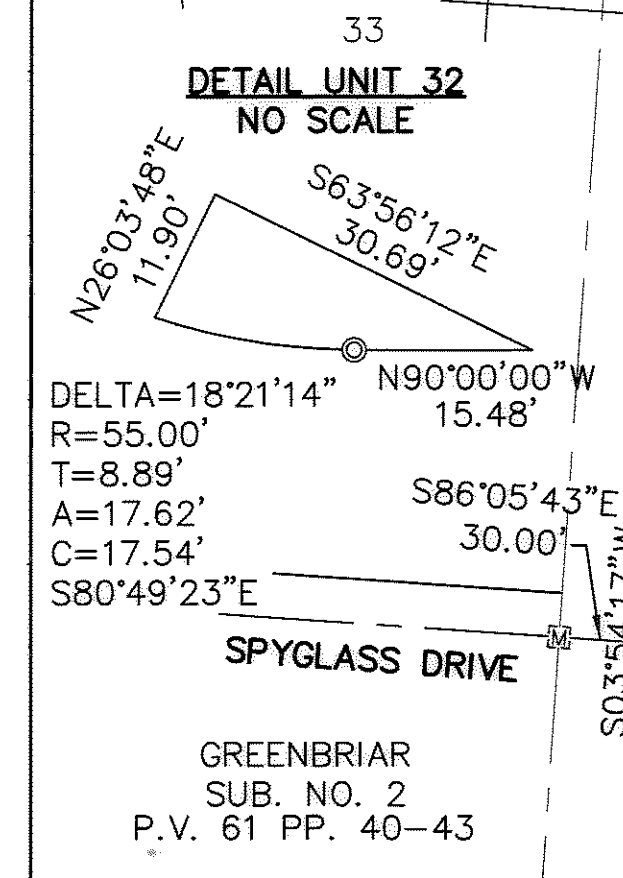
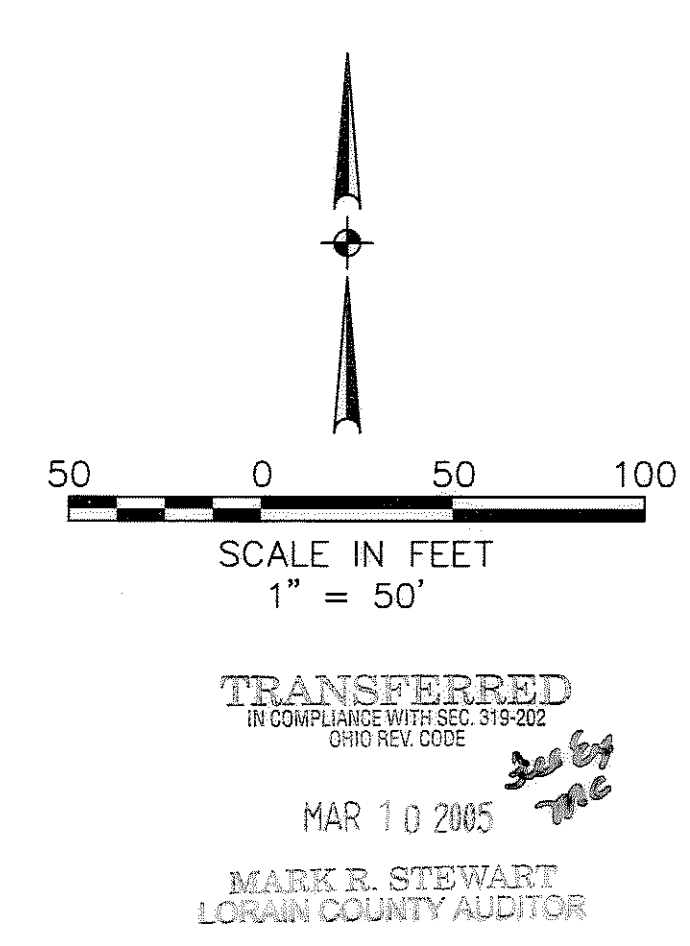
SHEET INDEX

SHEET NO.	DESCRIPTION
1	SURVEY MAP & MISC.
2	SURVEY MAP & MISC. CONTINUED
3	CURVE DATA & OWNERSHIP TABLE
4	FLOOR & FOUNDATION PLANS
5	ELEVATION VIEWS

CERTIFICATION
THIS IS TO CERTIFY THAT THE ATTACHED DRAWINGS CORRECTLY REPRESENT THE BUILDINGS AS CONSTRUCTED AND THAT THERE ARE NO ENCROACHMENTS ON ABUTTING PROPERTIES, EXCEPT AS SHOWN.

Lynn S. Miggins
LYNN S. MIGGINS
PROFESSIONAL ENGINEER NO. 46837

David L. Elwell
DAVID L. ELWELL
PROFESSIONAL SURVEYOR NO. 6333



REVISIONS	DATE	DESCRIPTION	BY
	02-09-05	ORIGINAL ISSUE	BAP

KS ASSOCIATES, INC.
260 Burns Road, Suite 100
Elyria, Ohio 44035
Phone (440) 365-4730
Fax (440) 365-4790
mailto:mailroom@ksassoc.com
www.ksassoc.com

STONEHEDGE CONDOMINIUMS
PHASE NO. 23

PART OF
CARLISLE TOWNSHIP SECTION NO. 5
CITY OF ELYRIA COUNTY OF LORAIN STATE OF OHIO

SHEET 1 OF 5
JOB NO. 92424-CP23

CURVE DATA

A Δ = 38°07'27" R = 25.00' T = 8.64' L = 16.63' C = 16.33' CB = S25°28'22"E	N Δ = 20°15'21" R = 190.00' T = 110.81' L = 183.30' C = 168.49' CB = S42°38'06"W	AA Δ = 51°10'38" R = 87.45' T = 41.88' L = 78.11' C = 75.54' CB = S21°11'35"E	MM R=44.00' L=12.25' Tan=6.16' Δ=15°57'06" CH=12.21' CB=S56°22'15"E	XX R=111.00' L=35.01' Tan=17.65' Δ=18°04'23" CH=34.87' CB=S08°03'11"E	1I R=89.00' L=28.07' Tan=14.15' Δ=18°04'23" CH=27.96' CB=N08°03'11"W
B Δ = 80°47'16" R = 130.00' T = 110.81' L = 183.30' C = 168.49' CB = S42°38'06"W	O Δ = 56°14'17" R = 190.00' T = 101.53' L = 186.49' C = 179.10' CB = N54°54'35"E	BB Δ = 58°56'55" R = 71.00' T = 40.13' L = 73.05' C = 69.87' CB = N25°34'00"W	NN R=44.00' L=12.03' Tan=6.05' Δ=15°39'39" CH=11.99' CB=N28°18'46"E	YY R=25.00' L=39.27' Tan=25.00' Δ=90°00'00" CH=35.36' CB=S44°01'00"E	1J R=25.00' L=39.27' Tan=25.00' Δ=90°00'00" CH=35.36' CB=N62°05'23"W
C Δ = 24°32'58" R = 190.00' T = 41.34' L = 81.41' C = 80.79' CB = N14°30'57"E	P Δ = 32°18'52" R = 66.00' T = 19.12' L = 37.22' C = 36.73' CB = N77°00'57"W	CC Δ = 33°20'33" R = 87.45' T = 26.19' L = 50.89' C = 50.18' CB = S12°16'32"E	OO R=66.00' L=19.04' Tan=9.59' Δ=16°31'41" CH=18.97' CB=S33°46'12"E	ZZ R=25.00' L=4.88' Tan=2.45' Δ=11°11'22" CH=4.87' CB=N85°23'19"E	1K R=44.00' L=44.13' Tan=24.12' Δ=57°27'39" CH=4.87' CB=S53°08'48"W
D Δ = 40°05'31" R = 25.00' T = 9.12' L = 17.49' C = 17.14' CB = N13°39'13"E	Q Δ = 26°48'49" R = 66.00' T = 15.73' L = 30.89' C = 30.61' CB = N17°49'23"W	DD Δ = 17°50'05" R = 87.45' T = 13.72' L = 27.22' C = 27.11' CB = S37°51'51"E	PP R=89.00' L=47.22' Tan=24.18' Δ=30°24'05" CH=46.67' CB=S57°42'35"W	1A R=27.50' L=27.57' Tan=15.07' Δ=57°27'05" CH=26.43' CB=S71°28'49"E	1L R=44.00' L=41.04' Tan=22.15' Δ=53°26'07" CH=39.56' CB=N71°24'19"W
E Δ = 53°07'38" R = 25.00' T = 12.50' L = 23.18' C = 22.36' CB = N60°15'48"E	R Δ = 22°39'54" R = 190.00' T = 38.08' L = 75.16' C = 74.67' CB = N38°07'23"E	EE R=44.00' L=61.06' Tan=36.60' Δ=79°30'36" CH=56.28' CB=N75°53'54"E	QQ R=66.00' L=54.12' Tan=28.69' Δ=46°58'57" CH=52.62' CB=S65°31'31"E	1B R=30.00' L=23.08' Tan=12.14' Δ=44°04'16" CH=22.51' CB=N70°12'06"E	1M R=45.00' L=69.78' Tan=44.11' Δ=88°51'05" CH=63.00' CB=N43°26'32"W
F Δ = 14°39'14" R = 200.00' T = 25.72' L = 51.15' C = 51.01' CB = N16°05'46"E	S Δ = 13°19'02" R = 190.00' T = 22.18' L = 44.16' C = 44.06' CB = N56°06'51"E	FF R=111.00' L=37.75' Tan=19.06' Δ=19°29'03" CH=37.57' CB=N11°59'35"E	RR RR R=211.00' L=40.81' Tan=20.47' Δ=11°04'56" CH=40.75' CB=S11°32'55"E	1C R=20.00' L=15.71' Tan=8.28' Δ=45°00'00" CH=15.31' CB=S69°44'13"W	1N R=27.50' L=21.74' Tan=11.47' Δ=45°17'23" CH=21.18' CB=N46°43'06"E
G Δ = 26°29'29" R = 55.00' T = 12.95' L = 25.43' C = 25.20' CB = N76°45'16"W	T Δ = 13°46'24" R = 190.00' T = 22.95' L = 45.67' C = 45.56' CB = N69°39'34"E	GG R=89.00' L=62.53' Tan=32.62' Δ=40°15'29" CH=61.26' CB=S22°22'47"W	SS R=111.00' L=8.59' Tan=4.30' Δ=4°26'03" CH=8.59' CB=N88°45'59"E	1D R=27.50' L=82.44' Tan=381.87' Δ=171°45'43" CH=54.86' CB=S64°26'30"W	1O R=27.50' L=21.84' Tan=11.54' Δ=45°30'46" CH=21.27' CB=N01°19'02"E
H Δ = 8°47'02" R = 111.00' T = 8.53' L = 17.02' C = 17.00' CB = S82°26'06"W	U Δ = 29°37'44" R = 66.00' T = 17.46' L = 34.13' C = 33.75' CB = N46°02'39"W	HH R=311.00' L=42.19' Tan=21.13' Δ=7°46'24" CH=42.16' CB=N62°51'00"E	TT R=105.00' L=20.00' Tan=10.03' Δ=10°54'51" CH=19.97' CB=N53°52'53"W	1E R=25.00' L=30.77' Tan=17.68' Δ=70°31'44" CH=28.87' CB=N64°56'30"W	1P R=27.50' L=38.86' Tan=23.47' Δ=80°57'37" CH=35.70' CB=S70°09'25"E
I Δ = 0°51'42" R = 589.00' T = 4.43' L = 8.86' C = 8.86' CB = N78°28'26"E	V Δ = 90°00'00" R = 25.00' T = 25.00' L = 39.27' C = 35.36' CB = S48°54'17"W	II R=44.00' L=71.36' Tan=46.30' Δ=92°55'21" CH=63.79' CB=S42°33'20"E	UU R=105.00' L=54.39' Tan=27.82' Δ=29°40'41" CH=53.78' CB=N74°10'39"W	1F R=45.00' L=8.79' Tan=4.41' Δ=11°11'22" CH=8.77' CB=S85°23'19"W	1Q R=30.00' L=35.29' Tan=20.01' Δ=67°23'58" CH=33.29' CB=S57°09'58"W
J Δ = 2°48'19" R = 589.00' T = 14.42' L = 28.84' C = 28.84' CB = N85°25'27"E	W Δ = 111°07'22" R = 44.00' T = 64.17' L = 85.34' C = 72.58' CB = S76°02'37"W	JJ R=89.00' L=19.30' Tan=9.69' Δ=12°25'38" CH=19.27' CB=N84°46'11"E	VV R=111.00' L=26.42' Tan=13.27' Δ=13°38'20" CH=26.36' CB=N79°43'47"E	1G R=25.00' L=39.27' Tan=25.00' Δ=90°00'00" CH=35.36' CB=S45°59'00"W	1R R=30.00' L=36.13' Tan=20.62' Δ=69°00'17" CH=33.99' CB=S57°58'07"W
K Δ = 97°04'40" R = 44.00' T = 49.80' L = 74.55' C = 65.95' CB = S44°38'03"E	X Δ = 110°53'45" R = 44.00' T = 63.90' L = 85.16' C = 72.48' CB = N79°51'52"E	KK R=111.00' L=35.01' Tan=17.65' Δ=18°04'23" CH=34.87' CB=S81°56'49"W	WW R=25.00' L=34.59' Tan=20.71' Δ=79°15'49" CH=31.89' CB=N22°32'32"E	1H R=105.00' L=90.54' Tan=48.30' Δ=49°24'27" CH=87.76' CB=N23°43'14"W	
L Δ = 88°45'25" R = 66.00' T = 64.58' L = 102.24' C = 92.32' CB = N48°47'41"W	Y Δ = 43°03'41" R = 25.00' T = 9.86' L = 18.79' C = 18.35' CB = S66°13'06"E	LL R=66.00' L=73.16' Tan=40.85' Δ=63°30'38" CH=69.47' CB=N57°15'41"W			
M Δ = 08°19'15" R = 66.00' T = 4.80' L = 9.59' C = 9.58' CB = N00°15'21"W	Z Δ = 71°46'07" R = 25.00' T = 18.09' L = 31.31' C = 29.31' CB = S56°22'00"W				

OWNERSHIP PERCENTAGES

UNIT NO.	SQ. FT.	ELEV. F.F.	% OWNERSHIP	UNIT NO.	SQ. FT.	ELEV. F.F.	% OWNERSHIP
1	1661.92	756.59	0.9593	77	1736.17	756.16	1.0022
2	1602.38	756.59	0.9250	78	1520.92	757.05	0.8779
3	1191.64	755.86	0.6879	79	1520.92	754.21	0.8779
4	1214.22	755.86	0.7009	80	1520.92	756.02	0.8779
5	1602.38	757.42	0.9250	81	1520.92	756.87	0.8779
6	1661.92	757.42	0.9593	82	1207.46	754.46	0.6970
7	1658.47	756.00	0.9573	83	1207.46	754.66	0.6970
8	1661.92	756.00	0.9593	84	1520.92	754.94	0.8779
9	1196.28	756.42	0.6905	85	1317.98	755.96	0.7608
10	1213.70	756.42	0.7006	86	2064.94	755.96	1.1920
11	1196.28	756.76	0.6905	87	1730.49	755.63	0.9989
12	1213.70	756.76	0.7006	88	1388.87	754.91	0.8017
13	1599.80	754.87	0.9235	89	1940.62	755.37	1.1202
14	1393.43	756.44	0.8044	90	2053.62	755.37	1.1854
15	1713.47	756.37	0.9891	91	1207.46	754.86	0.6970
16	1733.47	756.37	1.0006	92	1520.92	756.77	0.8779
17	1658.47	757.40	0.9573	93	1942.62	755.42	1.1214
18	1661.92	757.41	0.9593	94	1936.39	755.42	1.1178
19	1196.28	755.58	0.6905	95	1730.49	755.40	0.9989
20	1393.43	757.01	0.8044	96	1207.46	756.65	0.6970
21	1393.43	757.56	0.8044	97	2072.42	758.91	1.1963
22	1393.43	754.55	0.8044	98	1940.62	758.91	1.1202
23	1196.28	754.53	0.6905	99	1332.09	754.42	0.7689
24	1213.70	754.54	0.7006	100	1600.25	756.80	0.9237
25	1658.47	758.13	0.9573	101	1520.92	756.44	0.8779
26	1661.92	758.13	0.9593	102	1520.92	756.80	0.8779
27	1393.43	755.19	0.8044	103	1207.46	755.72	0.6970
28	1393.43	754.43	0.8044	104	1207.46	755.45	0.6970
29	1393.43	757.07	0.8044	105	1388.87	756.52	0.8017
30	1196.28	756.16	0.6905	106	1207.46	755.59	0.6970
31	1196.28	755.32	0.6905	107	1388.87	757.82	0.8017
32	1393.43	756.45	0.8044	108	1520.92	757.07	0.8779
33	1393.43	756.64	0.8044	109	1207.46	757.07	0.6970
34	1213.70	753.83	0.7006	110	1318.11	755.25	0.7609
35	1393.43	753.61	0.8044	111	1940.84	755.25	1.1203
36	1393.43	754.43	0.8044	112	1207.46	757.32	0.6970
37	1717.06	754.06	0.9912	113	1207.46	757.05	0.6970
38	1717.06	754.20	0.9912	114	1646.39	756.68	0.9504
39	1717.06	755.50	0.9912	115	1519.69	756.68	0.8772
40	1661.92	756.29	0.9593	TOTAL	173,236.55		100.00%
41	1658.47	756.29	0.9573				
42	1717.06	755.93	0.9912				
43	1393.43	754.62	0.8044				
44	1717.06	754.78	0.9912				
45	1717.06	755.45	0.9912				
46	1253.34	754.10	0.7235				
47	1705.23	756.45	0.9843				
48	1573.19	755.60	0.9081				
49	1705.23	755.96	0.9843				
50	1705.23	755.61	0.9843				
51	1417.96	753.78	0.8185				
52	1928.15	756.29	1.1130				
53	1928.15	755.93	1.1130				
54	1207.46	754.58	0.6970				
55	1207.46	754.58	0.6970				
56	1393.43	754.54	0.8044				
57	1393.43	756.42	0.8044				
58	1207.46	754.62	0.6970				
59	1717.06	755.09	0.9912				
60	1207.46	753.81	0.6970				
61	1389.04	755.51	0.8018				
62	1207.46	753.98	0.6970				
63	1335.42	754.88	0.7709				
64	1717.06	755.31	0.9912				
65	1520.92	755.63	0.8779				
66	1600.25	755.95	0.9237				
67	1520.92	755.20	0.8779				
68	2053.62	755.47	1.1854				
69	1317.98	755.47	0.7608				
70	1717.06	752.12	0.9912				
71	1520.92	754.64	0.8779				
72	1600.25	756.07	0.9237				
73	1335.42	755.62	0.7709				
74	1520.92	755.40	0.8779				
75	1736.17	756.82	1.0022				
76	1520.92	756.89	0.8779				

LINE DATA

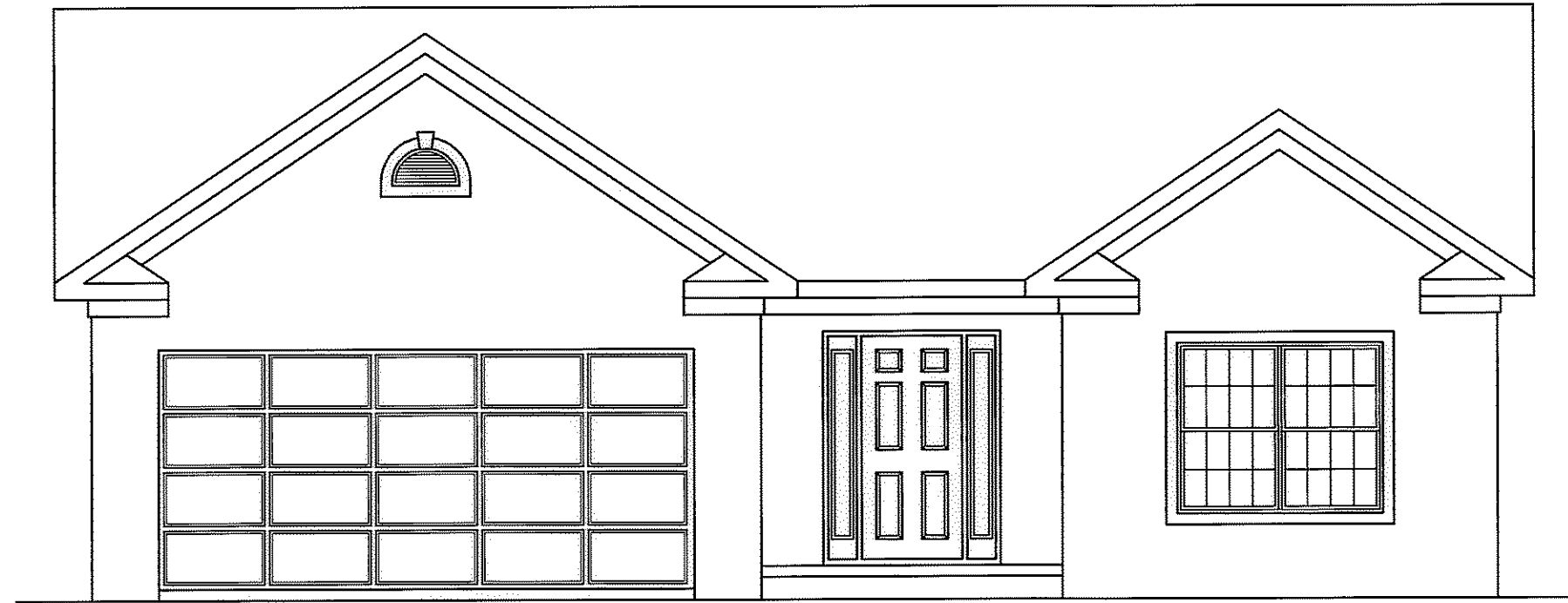
L1 N 00°59'00" E
5.01'

DATE	DESCRIPTION	BY
02-09-05	ORIGINAL ISSUE	BAP

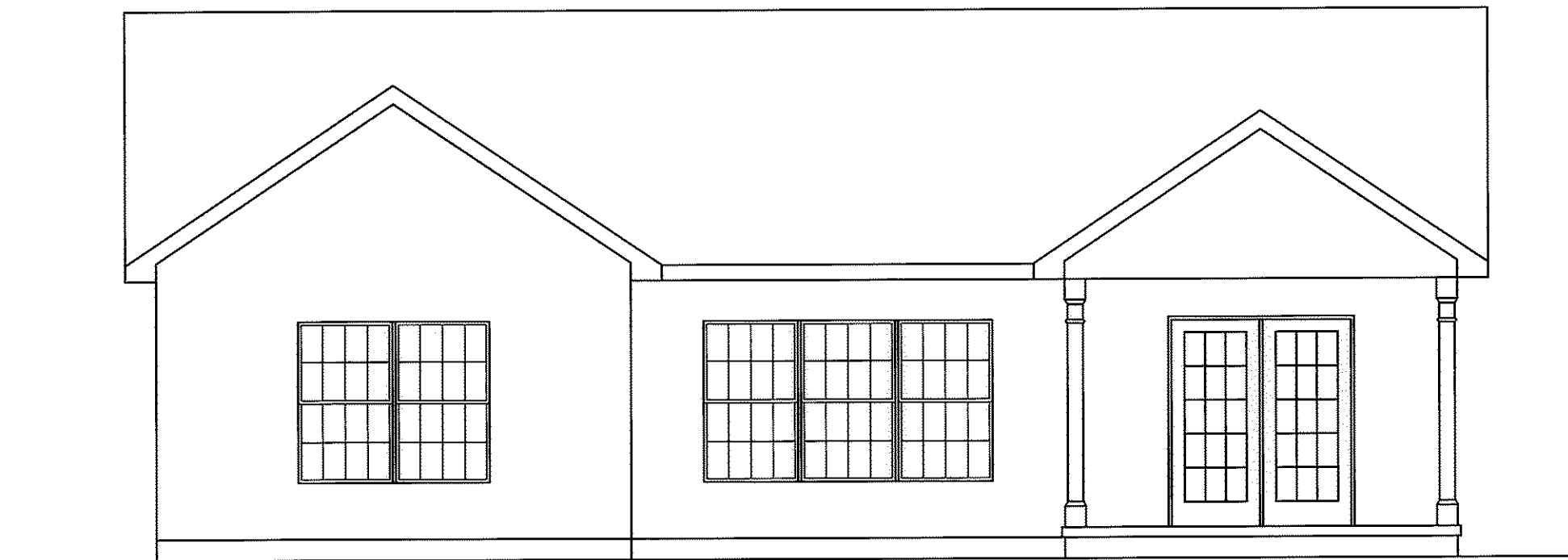


**STONEHEDGE CONDOMINIUMS
PHASE NO. 23**
PART OF
CARLISLE TOWNSHIP SECTION NO. 5
CITY OF ELYRIA COUNTY OF LORAIN STATE OF OHIO

SHEET
3 OF
5
JOB NO.
92424-CP23

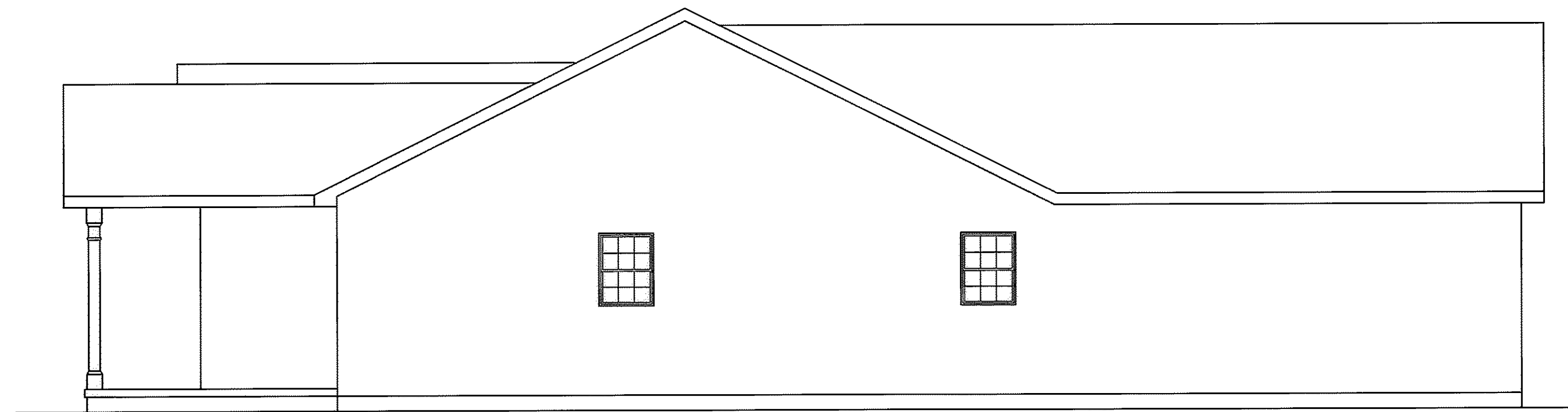


FRONT ELEVATION

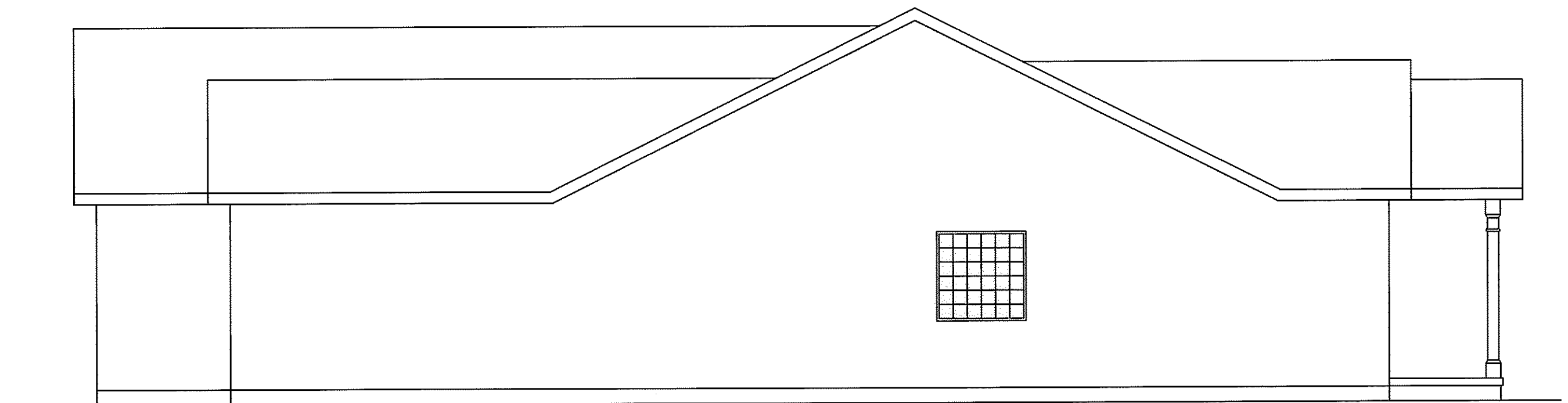


REAR ELEVATION

NOTE: ELEVATION VIEWS SHOWN ARE TYPICAL FOR A SELECTED UNIT IN OVERALL SITE. INDIVIDUAL VARIATIONS SUBJECT TO MODEL TYPE GARAGE ORIENTATION UNIT REVERSAL, SINGLE UNIT CONSTRUCTION, ETC. BUILDINGS ARE UNDER CONSTRUCTION.



LEFT SIDE ELEVATION



RIGHT SIDE ELEVATION

REVISIONS	DATE	DESCRIPTION	BY
	02-09-05	ORIGINAL ISSUE	BAP

KS ASSOCIATES
 KS ASSOCIATES, INC.
 260 Burns Road, Suite 100
 Elvira, Ohio 44035
 Phone (440) 365-4730
 Fax (440) 365-4790
 mailroom@ksassoc.com
 www.ksassoc.com

**STONEHEDGE CONDOMINIUMS
 PHASE NO. 23**

ELEVATION VIEWS