

(SEE SHEET 3)

SURVEY LEGEND

- 5/8" IRON PIN SET
- IRON PIN/PIPE FOUND
- 5/8" IRON PIN SET IN MONUMENT BOX
- MONUMENT BOX FOUND

CURVE TABLE

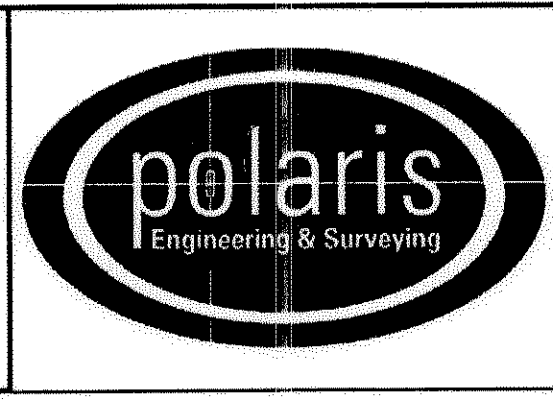
CURVE	LENGTH	RADIUS	TANGEN	CHORD	BEARING	DELTA
C1	381.46'	1100.00'	192.66'	379.55'	N23°36'55"W	19°52'09"
C3	28.62'	20.00'	17.39'	26.24'	S07°27'00"W	82°00'00"
C4	164.20'	1130.00'	82.24'	164.05'	N29°23'14"W	8°19'32"
C5	76.51'	1130.00'	38.27'	76.50'	N23°17'04"W	3°52'47"
C6	76.15'	1130.00'	38.09'	76.13'	N19°24'52"W	3°51'39"
C7	75.00'	1130.00'	37.52'	74.99'	N15°34'56"W	3°48'11"
C8	34.21'	20.00'	23.01'	30.18'	N82°33'00"W	98°00'00"
C9	290.76'	1070.00'	146.28'	289.86'	N23°01'51"W	15°34'10"
C10	29.23'	1070.00'	14.62'	29.23'	N14°27'48"W	1°33'55"
C32	51.07'	1070.00'	25.54'	51.06'	N32°10'58"W	2°44'04"

TRANSFERRED
IN COMPLIANCE WITH SEC. 319-226
OHIO REV. CODE
SEP 27 2004
MARK R. STEWART
LORAIN COUNTY AUDITOR

REV. No.	DATE	BY	CHK'D
Misc-County Revisions	09-16-04	DL	DL

DATE: May 25, 2004
 SCALE: HOR. 1"=50'
 VERT. none
 FILENAME: Record Plat
 TAB: Plat-02
 CREW CHIEF: xxx

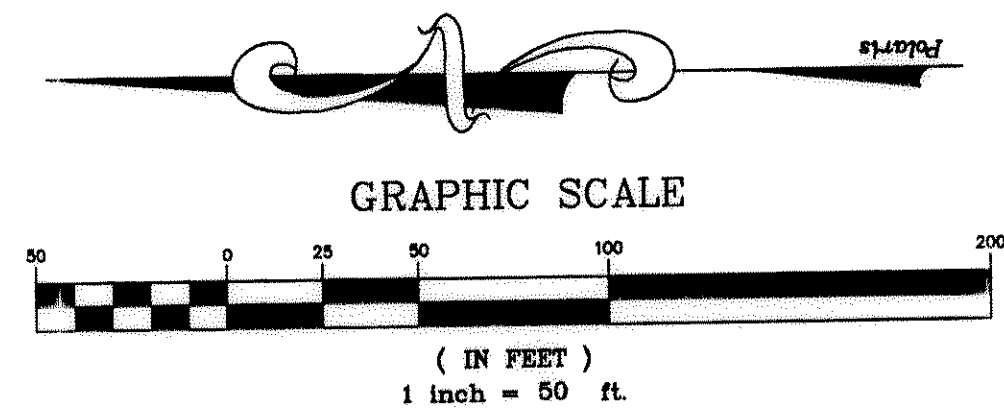
STONEBRIAR SUBDIVISION
 CITY OF NORTH RIDGEVILLE - LORAIN COUNTY - OHIO



POLARIS ENGINEERING & SURVEYING, INC.
 34600 CHARDON ROAD - SUITE D
 WILLOUGHBY HILLS, OHIO 44094
 (440) 944-4433 (440) 944-3722 (Fax)
 www.polaris-es.com

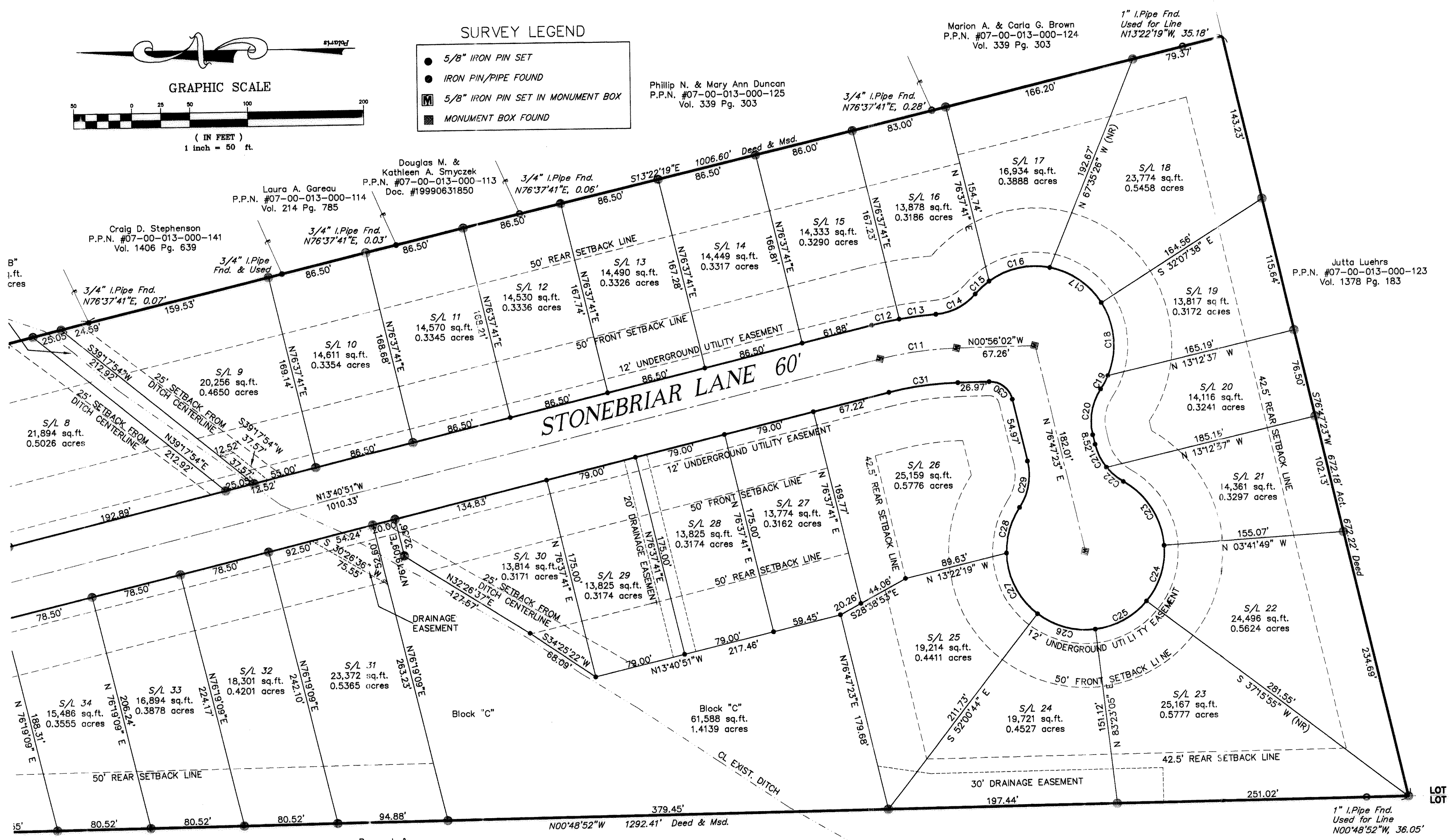
RECORD PLAT

CONTRACT No.	
03535	
SHEET	OF
2	3



- SURVEY LEGEND**
- 5/8" IRON PIN SET
 - IRON PIN/PIPE FOUND
 - 5/8" IRON PIN SET IN MONUMENT BOX
 - MONUMENT BOX FOUND

(SEE SHEET 2)



CURVE TABLE

CURVE	LENGTH	RADIUS	TANGENT	CHORD	BEARING	DELTA
C11	66.74'	300.00'	33.51'	66.61'	N07°18'26"W	12°44'49"
C12	24.14'	330.00'	12.07'	24.13'	N11°35'07"W	4°11'27"
C13	31.95'	330.00'	15.99'	31.94'	N06°43'08"W	5°32'49"
C14	38.98'	50.00'	20.53'	37.99'	S26°16'12"E	44°38'57"
C15	16.25'	68.00'	8.17'	16.21'	N41°44'50"W	13°41'40"
C16	55.05'	68.00'	29.14'	53.57'	N11°42'06"W	46°23'48"
C17	55.04'	68.00'	29.13'	53.55'	N34°41'05"E	46°22'34"
C18	65.52'	68.00'	35.55'	63.01'	N85°28'29"E	55°12'15"
C19	13.09'	68.00'	6.56'	13.07'	S81°24'33"E	11°01'40"
C20	41.29'	50.00'	21.90'	40.13'	N79°33'10"W	47°18'54"

CURVE TABLE

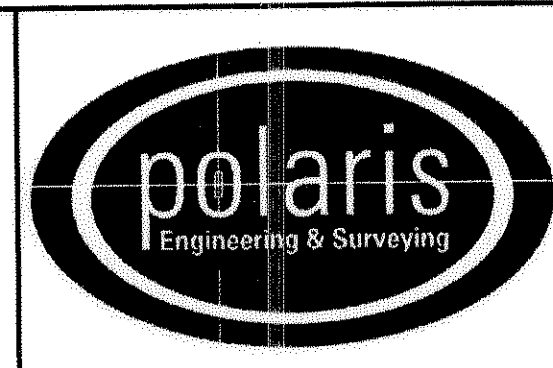
CURVE	LENGTH	RADIUS	TANGENT	CHORD	BEARING	DELTA
C21	22.20'	50.00'	11.29'	22.02'	S64°04'07"W	25°26'31"
C22	19.09'	50.00'	9.66'	18.97'	S40°24'40"W	21°52'23"
C23	67.45'	68.00'	36.79'	64.71'	N57°53'20"E	56°49'42"
C24	51.74'	68.00'	27.19'	50.50'	S71°53'59"E	43°35'40"
C25	51.61'	68.00'	27.12'	50.38'	S28°21'32"E	43°29'14"
C26	52.94'	68.00'	27.89'	51.61'	S15°41'10"W	44°36'11"
C27	60.99'	68.00'	32.72'	58.97'	S63°40'55"W	51°23'18"
C28	41.22'	68.00'	21.26'	40.59'	N73°15'35"W	34°43'43"
C29	41.29'	50.00'	21.90'	40.13'	S79°33'10"E	47°18'54"
C30	27.13'	20.00'	16.12'	25.10'	N37°55'40"E	77°43'25"
C31	60.07'	270.00'	30.16'	59.94'	N07°18'26"W	12°44'49"

TRANSFERRED
 IN COMPLIANCE WITH SEC. 3139.02
 OHIO REV. CODE
 SEP 27 2004
 MARK R. STEWART
 LORAIN COUNTY AUDITOR

REV. No.	DATE	BY	CHK'D
Misc-County Revisions	09-16-04	DL	DL

DATE: Nov 25, 2004
 SCALE: HOR. 1"=50'
 VERT. none
 FILENAME: Record Plat
 TAB: Plat-03
 CREW CHIEF: xxx

STONEBRIAR SUBDIVISION
 CITY OF NORTH RIDGEVILLE - LORAIN COUNTY - OHIO



POLARIS ENGINEERING & SURVEYING, INC.
 34800 CHARDON ROAD - SUITE D
 WILLOUGHBY HILLS, OHIO 44094
 (440) 944-4433 (440) 944-3722 (Fax)
 www.polaris-es.com

RECORD PLAT

CONTRACT No.	
03535	
SHEET	OF
3	3