

THE COTTAGES AT SAVANNAH CONDOMINIUM PHASE 15

THIS IS TO CERTIFY THAT AT THE REQUEST OF THE OWNERS I HAVE SURVEYED AND PLATTED "THE COTTAGES AT SAVANNAH CONDOMINIUM PHASE 15" AS SHOWN HEREON AND CONTAINING 3.335 ACRES OF LAND IN ORIGINAL LOT NO. 28 OF RIDGEVILLE TOWNSHIP, LORAIN COUNTY, OHIO. AT ALL POINTS THUSLY INDICATED ● IRON PIN MONUMENTS WERE FOUND OR SET. DISTANCES ARE SHOWN IN FEET AND DECIMAL PARTS THEREOF. BEARINGS SHOWN ARE BASED ON THE CENTERLINE OF STONEY RIDGE ROAD HAVING A BEARING OF N.30°44'00"W, AND ARE TO BE USED TO DENOTE ANGLES ONLY. THE PLAN REPRESENTS A SURVEY IN WHICH THE TRAVERSE OF THE EXTERIOR BOUNDARIES OF THE TRACT AND OF EACH BLOCK WHEN COMPUTED FROM FIELD MEASUREMENTS OF THE GROUND CLOSED WITHIN A LIMIT OF ERROR OF ONE (1) FOOT TO TEN THOUSAND (10,000) FEET IN PERIMETER BEFORE BALANCING THE SURVEY. THE SURVEY MEETS THE MINIMUM STANDARDS FOR LAND SURVEYS, IN SECTION 4733-37 OF THE OHIO ADMINISTRATIVE CODE AND ADJACENT PROPERTY DESCRIPTIONS HAVE BEEN CONSIDERED IN PERFORMING THIS SURVEY. ALL OF WHICH I CERTIFY TO BE CORRECT.

HAPONEK & ASSOCIATES INC.

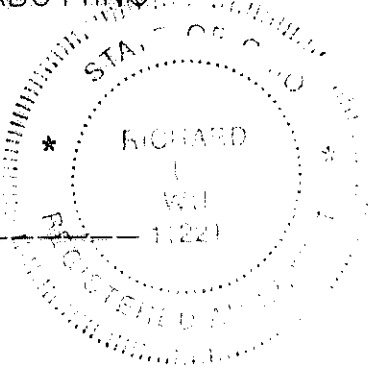
BY: *[Signature]*
DANE A. HAPONEK, REG. SURVEYOR NO. S-6211



CERTIFICATION

THIS IS TO CERTIFY THAT THE ATTACHED DRAWINGS ACCURATELY REPRESENT THE BUILDINGS AS CONSTRUCTED AND THAT THERE ARE NO ENCROACHMENTS ON ADJUTING PROPERTIES.

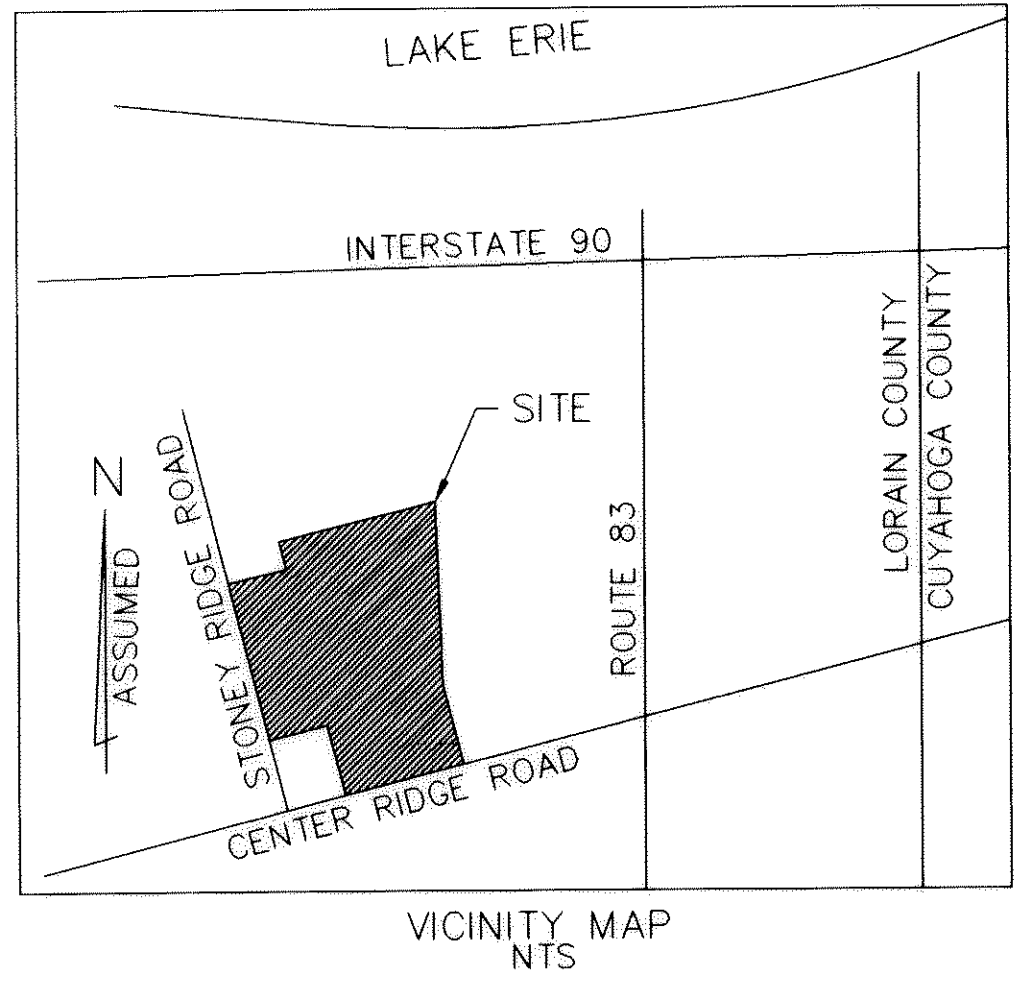
[Signature]
RICHARD LEE WU, P.E. ARCHITECT NO. 11221



NOTE:
UNITS NUMBERS 126 THRU 130, AS PHASE 15 OF THE CONDOMINIUM PLAN, HAVE EXCLUSIVE USE AREAS WHICH ARE PATIOS, DRIVES, PORCHES AND AN AREA (3) FEET AROUND THE FOUNDATION, DRIVES, PATIOS AND PORCHES.

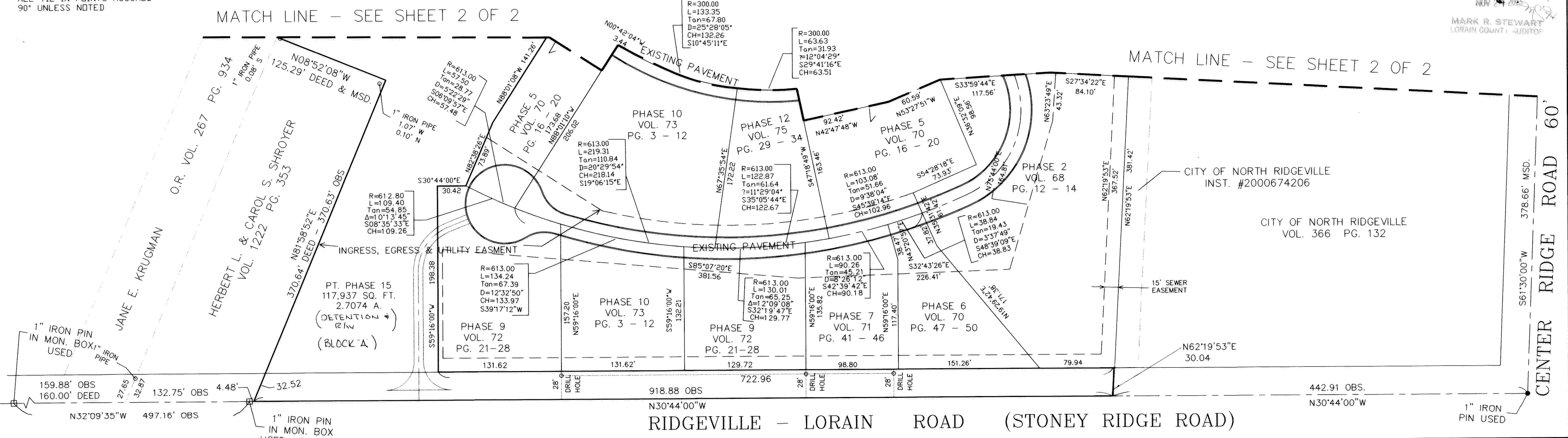
ACREAGE BREAKDOWN:

- TOTAL SITE... 726,984 SQ. FT., - 16.6892 ACRES (AREA TO R/W'S)
- PHASE 1... 101,075 SQ. FT., - 2.3203 ACRES
UNITS 1 THRU 10... 15,900 SQ. FT., - 0.3650 ACRES
- PHASE 2... 52,844 SQ. FT., - 1.2131 ACRES
UNITS 11 THRU 18... 13,418 SQ. FT., - 0.3080 ACRES
- PHASE 3... 35,168 SQ. FT., - 0.8073 ACRES
UNITS 19 THRU 24... 10,615 SQ. FT., - 0.2436 ACRES
- PHASE 4... 23,232 SQ. FT., - 0.5333 ACRES
UNITS 25 THRU 28... 7,880 SQ. FT., - 0.1808 ACRES
- PHASE 5... 40,820 SQ. FT., - 0.9370 ACRES
UNITS 29 THRU 40... 16,585 SQ. FT., - 0.3807 ACRES
- PHASE 6... 14,301 SQ. FT., - 0.3283 ACRES
UNITS 41 THRU 42... 2,739 SQ. FT., - 0.0067 ACRES
- PHASE 7... 24,327 SQ. FT., - 0.5585 ACRES
UNITS 43 THRU 47... 8905 SQ. FT., - 0.2045 ACRES
- PHASE 8... 35,510 SQ. FT., - 0.8152 ACRES
UNITS 48 THRU 55... 14,499 SQ. FT., - 0.3329 ACRES
- PHASE 9... 52,114 SQ. FT., - 1.1964 ACRES
UNITS 56 THRU 67... 20,284 SQ. FT., - 0.4656 ACRES
- PHASE 10... 85,587 SQ. FT., - 1.9648 ACRES
UNITS 68 THRU 81... 31,139 SQ. FT., - 0.7149 ACRES
- PHASE 11... 46,315 SQ. FT., - 1.0633 ACRES
UNITS 86 THRU 97... 20,029 SQ. FT., - 0.4598 ACRES
- PHASE 12... 55,693 SQ. FT., - 1.2785 ACRES
UNITS 98 THRU 113... 24,624 SQ. FT., - 0.5653 ACRES
- PHASE 13... 19,306 SQ. FT., - 0.4432 ACRES
UNITS 114 THRU 117... 6138 SQ. FT., - 0.1409 ACRES
- PHASE 14... 30,117 SQ. FT., - 0.6914 ACRES
UNITS 118 THRU 125... 13,270 SQ. FT., - 0.3046 ACRES
- PHASE 15... 144,985 SQ. FT., - 3.328 ACRES (INCLUDES DETENTION + R/W) (BLOCK "A")
UNITS 126 THRU 130... 9,251 SQ. FT., - 0.2124 ACRES
- REMAINDER... NONE



SHEET INDEX	SHEET
PLAN, WEST HALF	1
PLAN, EAST HALF	2
DETAILS	3 THRU 6

LEGEND
LIMITED COMMON AREA [Symbol]
ALL TIE-IN POINTS ASSUMED 90° UNLESS NOTED



TRANSFERRED
BY COMPLIANCE WITH 516.339-007
OHIO REV. CODE
NOV 24 2003
MARK R. STEWART
LORAIN COUNTY REGISTERED SURVEYOR

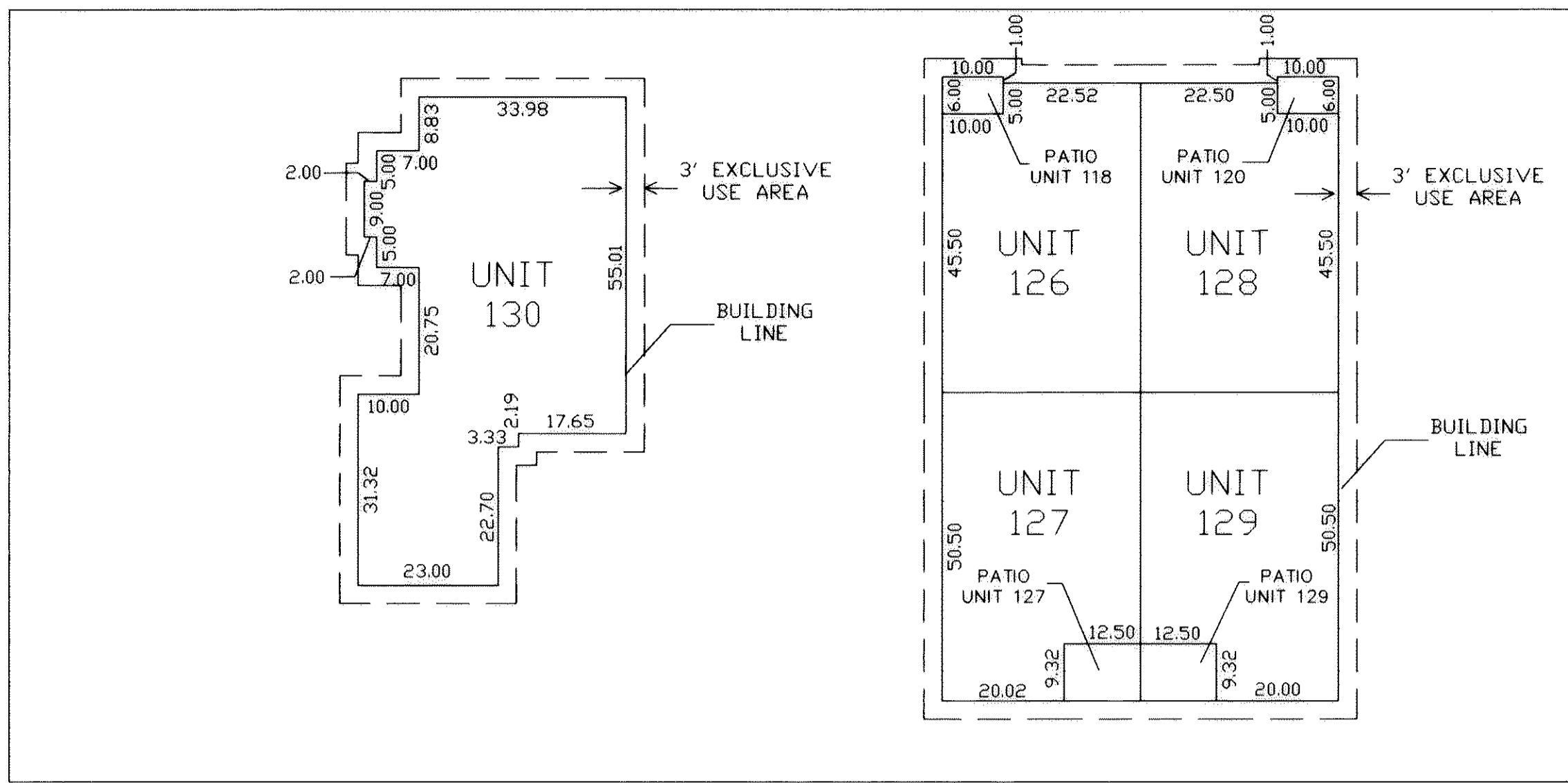
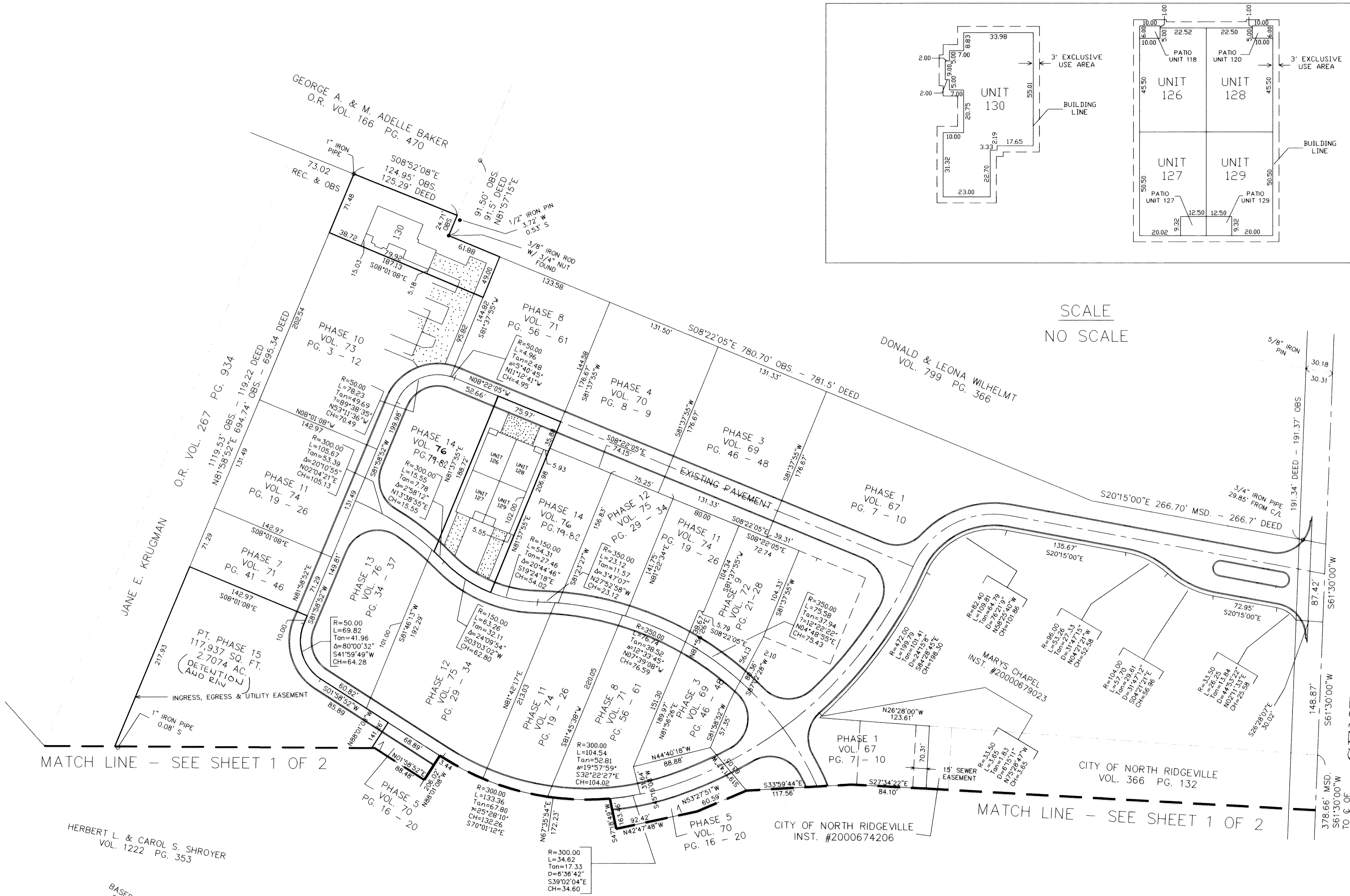
○ DENOTES: 5/8" IRON PIN FOUND
GRAPHIC SCALE
0 25 50 75 100
SCALE: 1" = 50'
BASED ON THE CENTERLINE OF STONEY RIDGE ROAD HAVING A BEARING OF N.30°44'00"W

REVISIONS	DATE	DESCRIPTION

THE COTTAGES AT SAVANNAH CONDOMINIUM PHASE 15
OF PART OF ORIGINAL RIDGEVILLE TWP. SECTION NO. 28
CITY OF NORTH RIDGEVILLE, LORAIN COUNTY, OHIO

HAPONEK & ASSOCIATES INC. ENGINEERS AND SURVEYORS
5444 STONEY RIDGE RD.
NORTH RIDGEVILLE, OHIO 44039
PHONE: (440) 327-4776

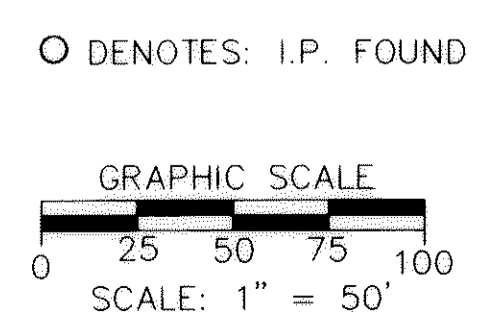
1/6
OCTOBER 2003



SCALE
NO SCALE

MATCH LINE - SEE SHEET 1 OF 2

MATCH LINE - SEE SHEET 1 OF 2



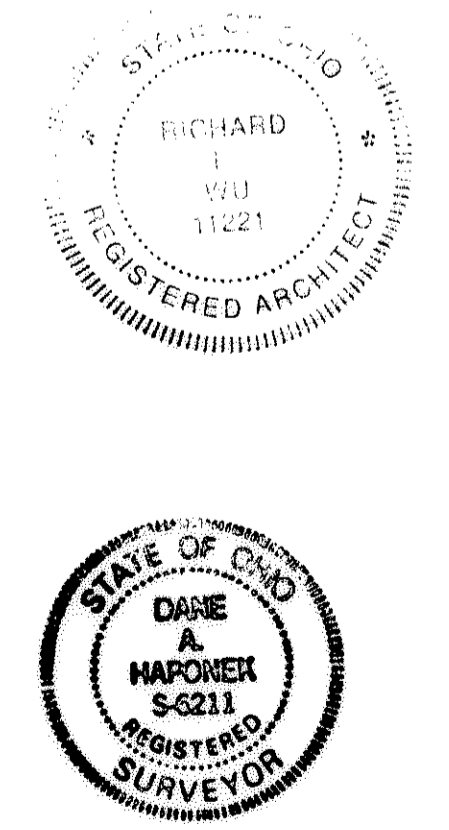
BASED ON THE CENTERLINE
OF STONEY RIDGE ROAD
HAVING A BEARING OF
N. 30° 44' 00\"/>

NO.	DATE	DESCRIPTION

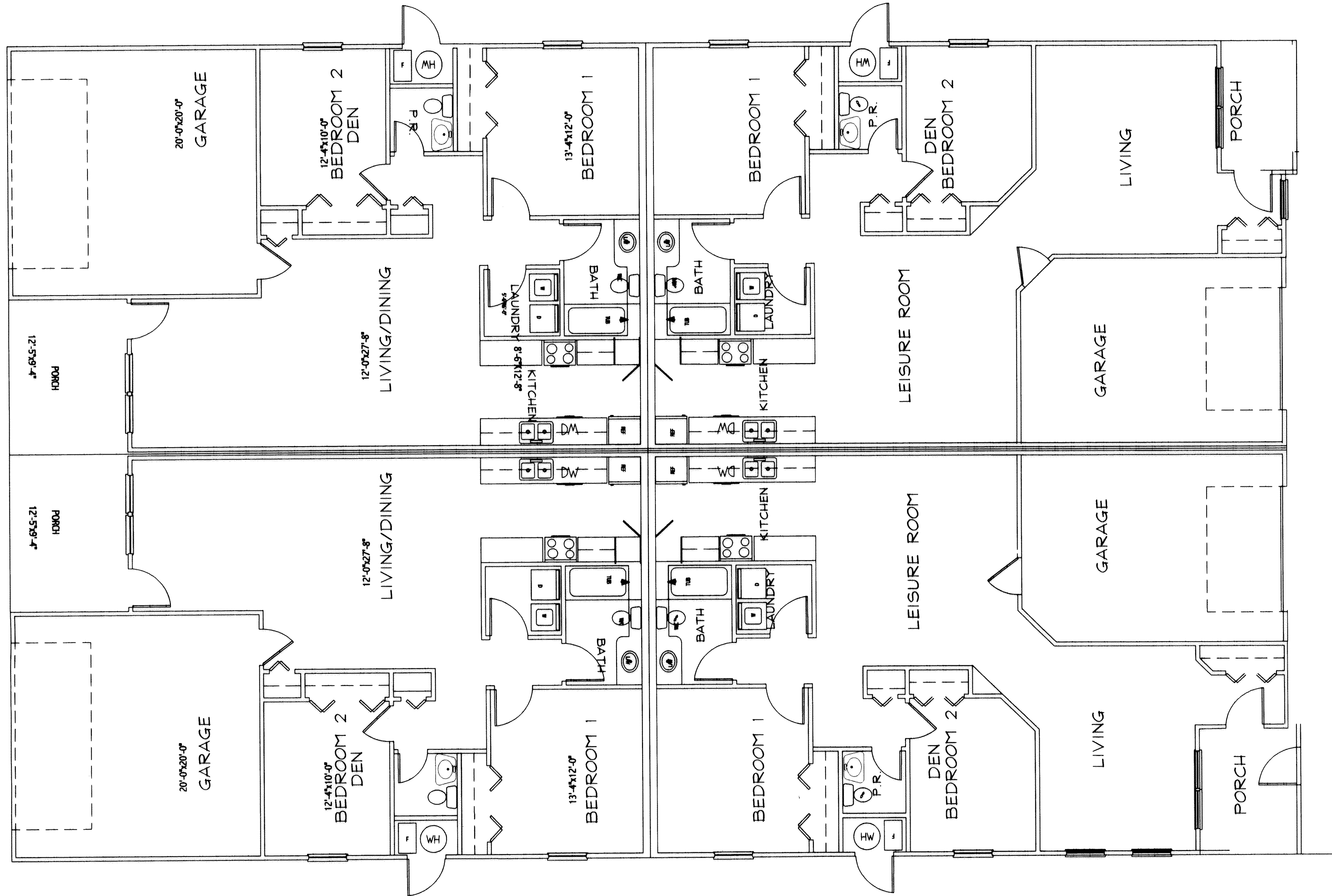
**THE COTTAGES AT SAVANNAH
CONDOMINIUM PHASE 15**
OF PART OF ORIGINAL RIDGEVILLE TWP. SECTION NO. 28
CITY OF NORTH RIDGEVILLE, LORAIN COUNTY, OHIO

HAPONEK & ASSOCIATES INC.
ENGINEERS AND SURVEYORS
5444 STONEY RIDGE RD.
NORTH RIDGEVILLE, OHIO 44039
PHONE: (440) 327-4776

2
6
OCTOBER
2003



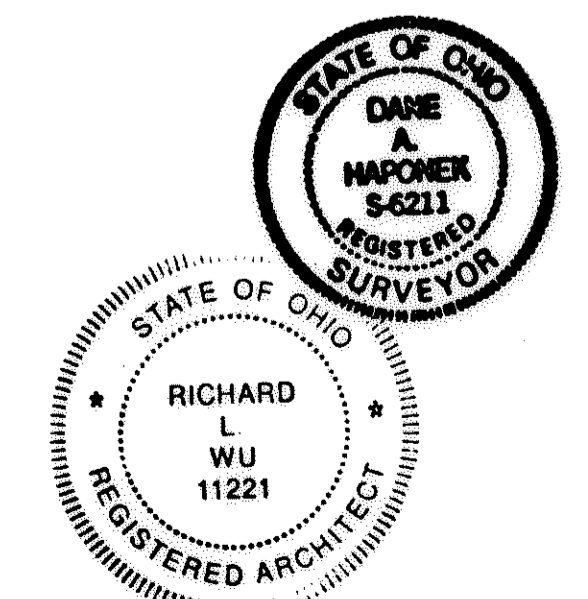
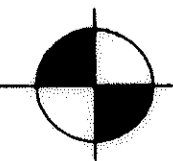
TAX MAP DEPT. COPY #03-00660

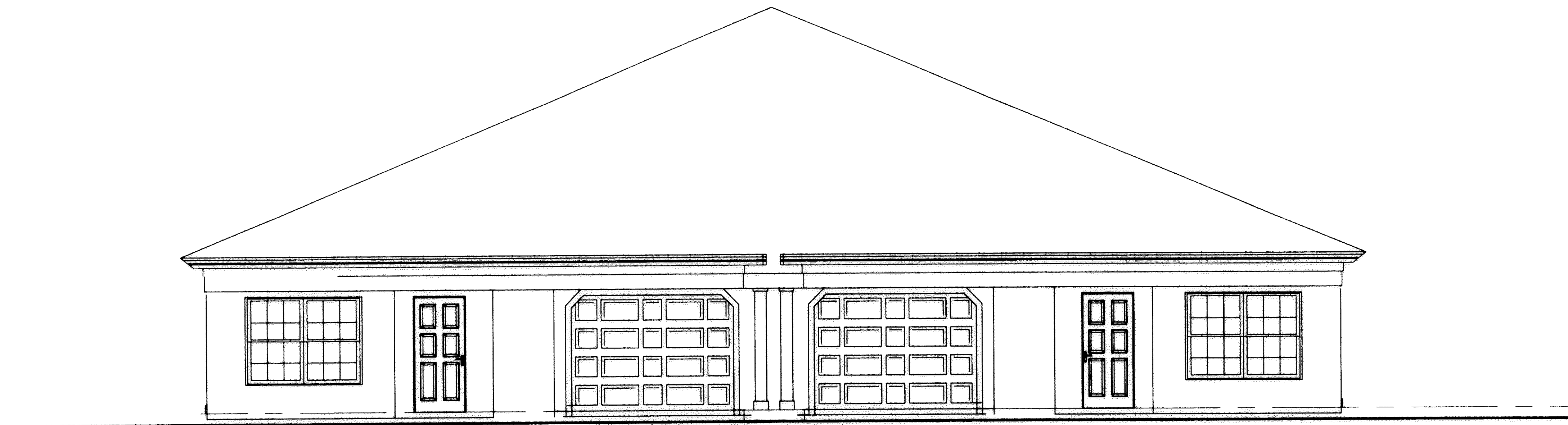


UNITS 126 - 129

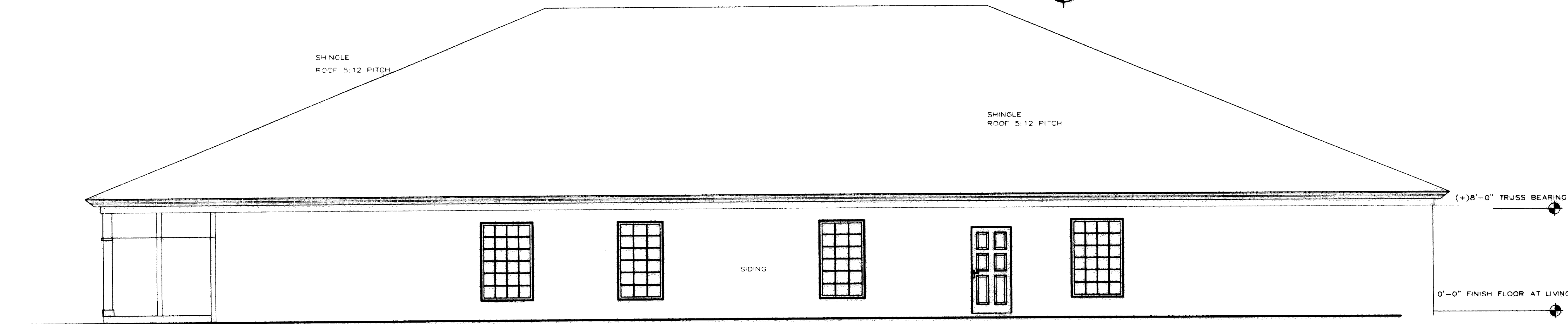
THE COTTAGES AT SAVANNAH CONDOMINIUM PHASE 15

FLOOR PLAN
SCALE: 1/4"=1'-0"





FRONT ELEVATION
SCALE: 1/4"=1'-0"



SIDE ELEVATION
SCALE: 1/4"=1'-0"

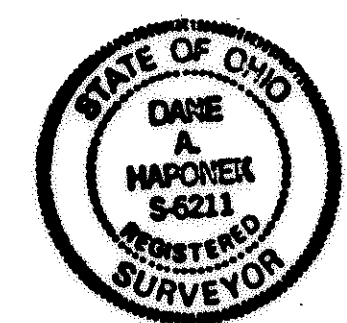


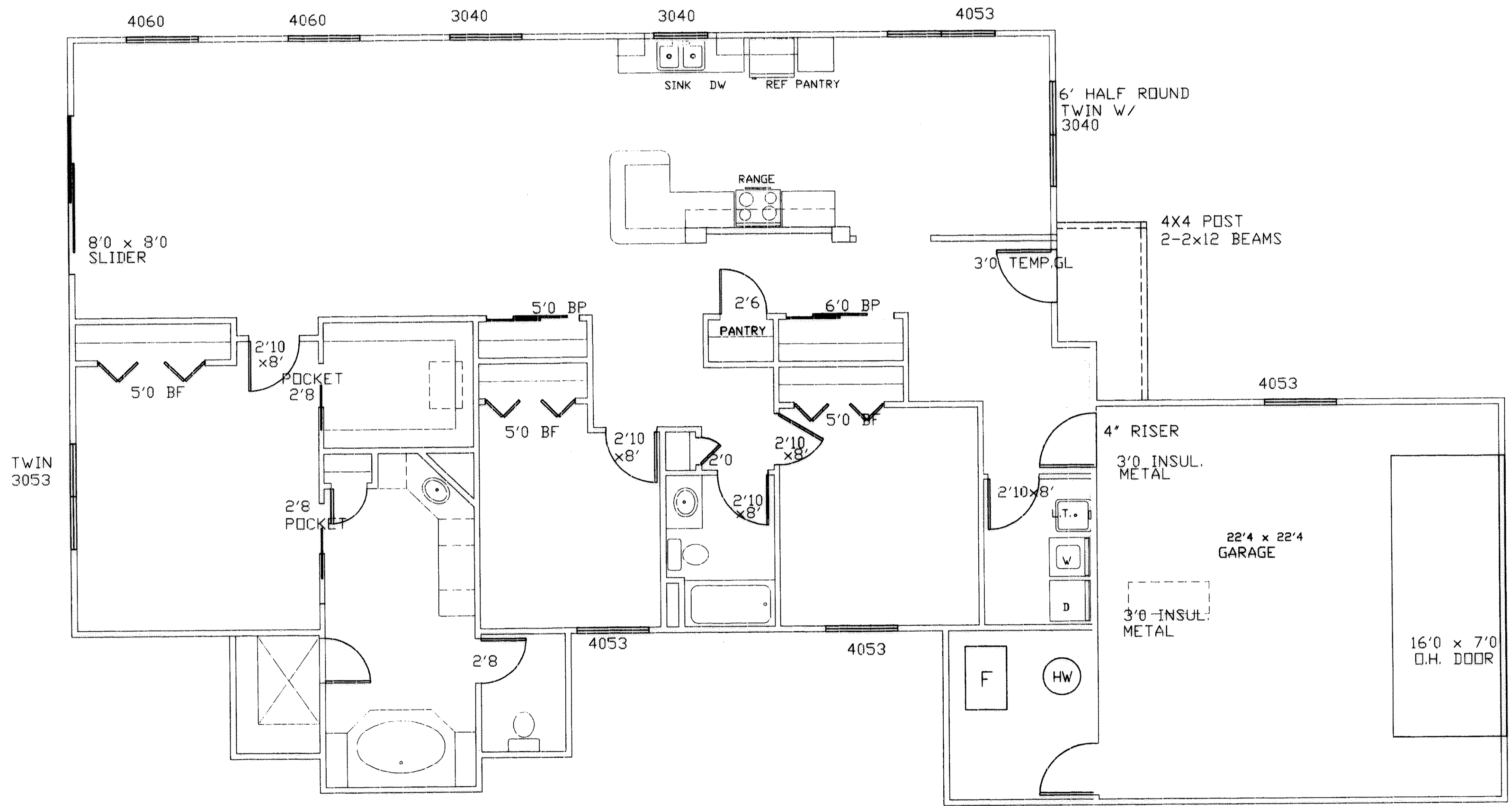
UNITS 126-129

THE COTTAGES AT SAVANNAH CONDOMINIUM PHASE 15

FRONT ELEVATION
SCALE: 1/4"=1'-0"

Tax MAP DEPT. COPY #03-00660





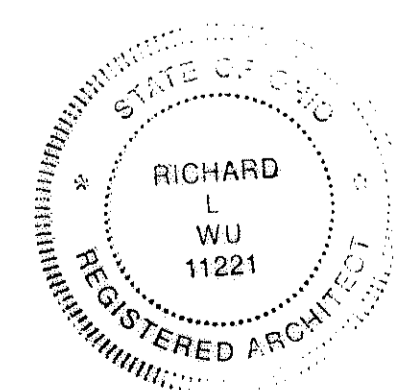
UNIT 130

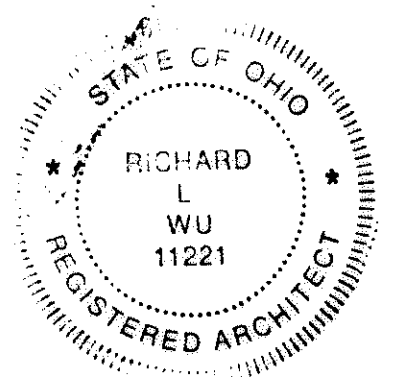
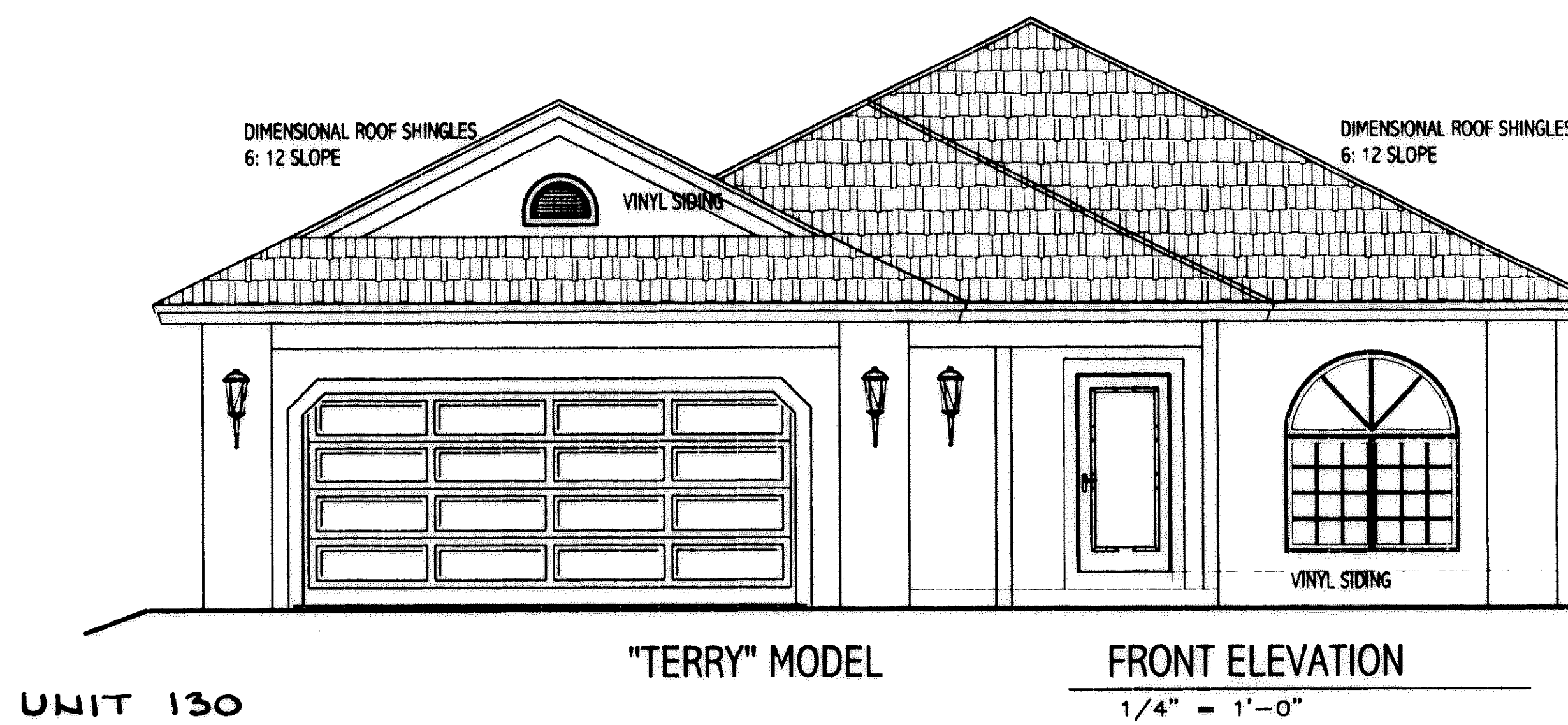
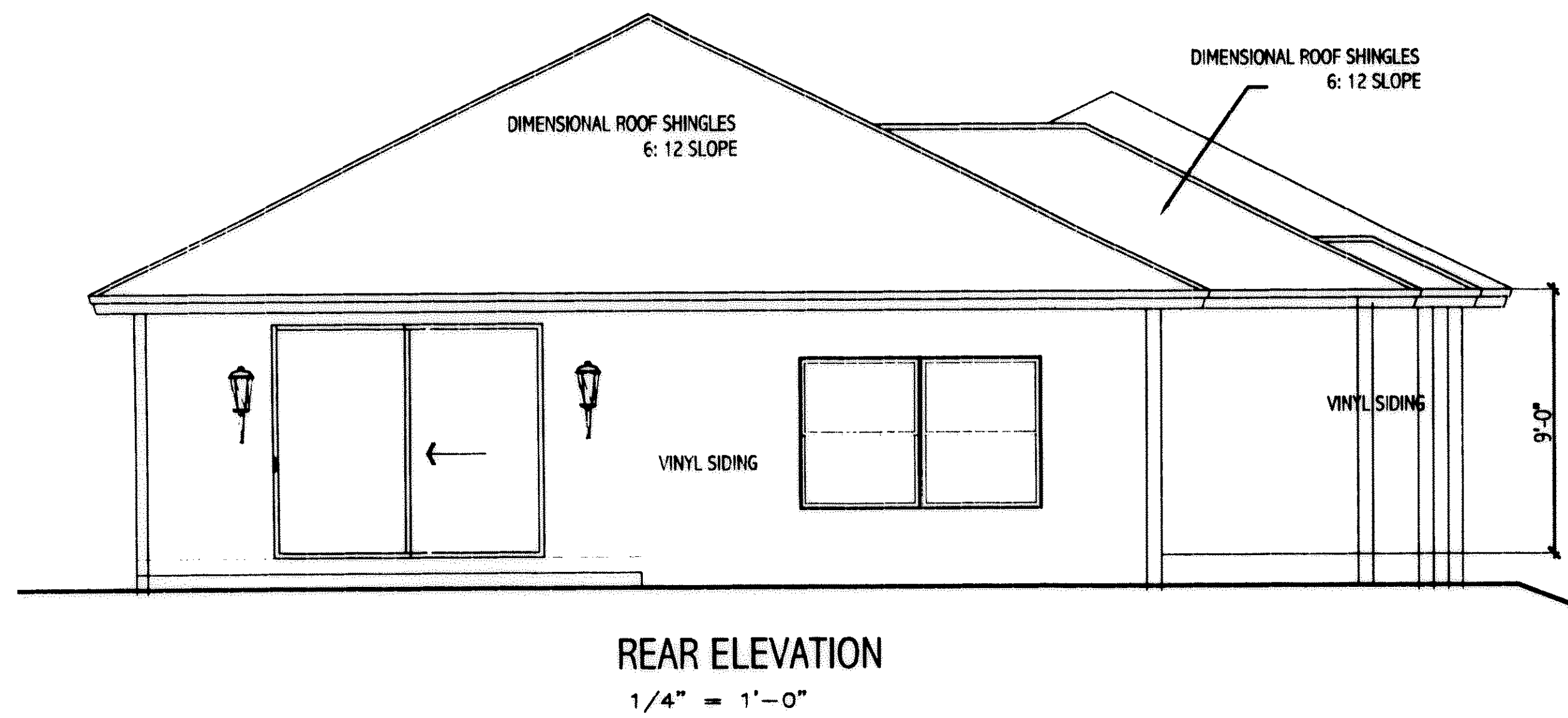
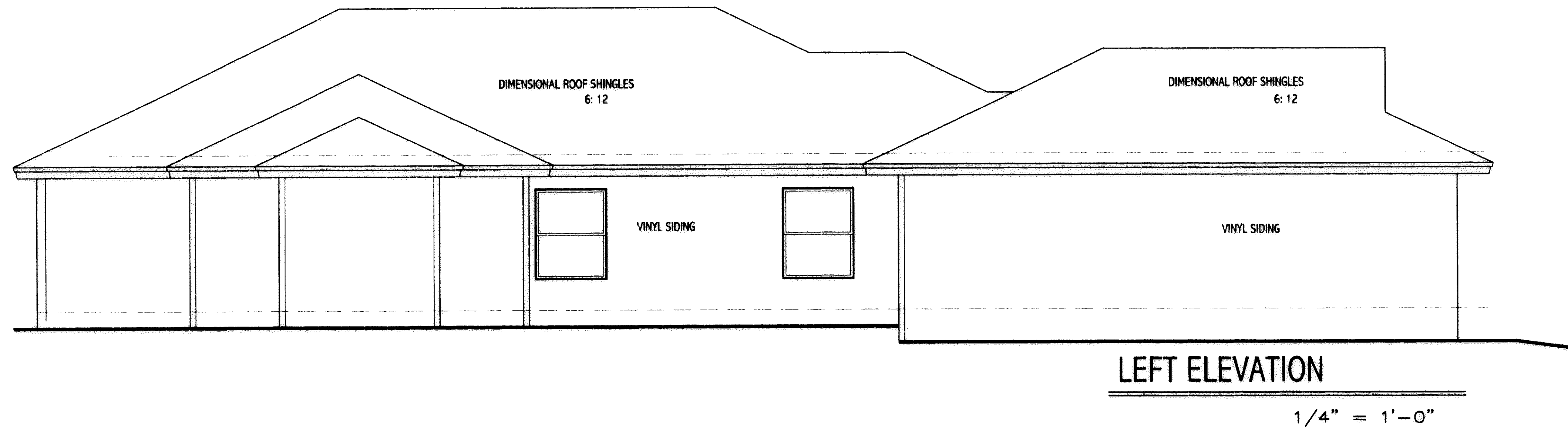
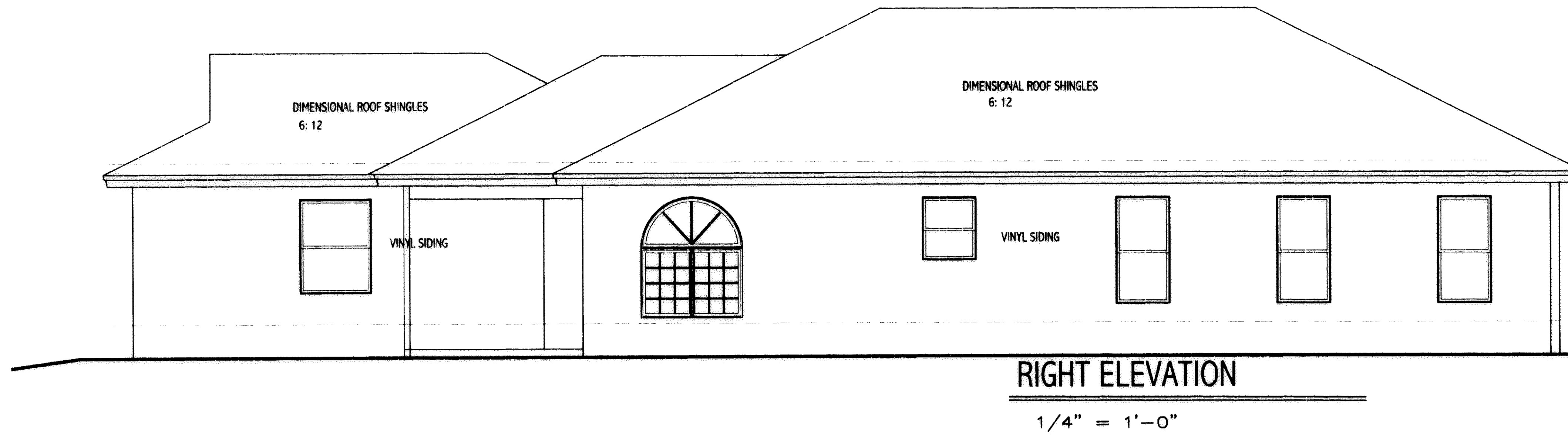
FLOOR PLAN
SCALE: 1/4" = 1'-0"

"TERRY"

THE COTTAGES AT SAVANNAH CONDOMINIUM PHASE 15

Tax Map Dept. Copy #03-00660





THE COTTAGES AT SAVANNAH CONDOMINIUM PHASE 15

Tax Map Dept. Copy # 03-00660