

P.P.N. 11-00-006-000-043 THOMAS W. JACOBUCCI 3-02-88

S 88°15'00" E 398.00
S 88°15'00" E VOL. 68 PG. 15-16
S 88°15'00" E 398.00

P.P.N. 11-00-005-000-035 PAUL VIOLI 7-10-02 I.N. 20020481274

P.P.N. 11-00-095-000-001 WILLIAM KOLONICK 11-01-93 DV 799 PG 419

P.P.N. 11-00-005-000-035 THE RAK GROUP L.L.C. 7-10-02 I.N. 20010746108

ROYAL BUSINESS PARK CONDOMINIUM PHASE ONE

UNITS 1 THRU 8

OF PART OF LOT 1 OF A MINOR SUBD. PLAT FOR LORAIN LAND
L.T.D. OF PART OF ORIGINAL EATON LOT NO. 5, NOW IN THE
TOWNSHIP OF EATON, LORAIN COUNTY, OHIO.

JULY 20, 2003

SCALE 1" = 30'

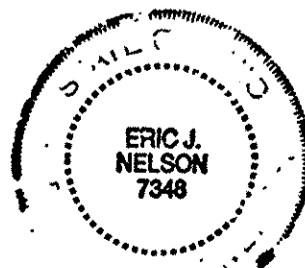
I HAVE PERFORMED A TRUE & ACCURATE SURVEY ON THE GROUND
OF THE REAL PROPERTY SHOWN HEREON. DISTANCES SHOWN HEREON
ARE IN FEET AND DECIMAL PARTS THEREOF. BEARINGS ARE TO AN
ASSUMED MERIDIAN. IRON PINS WERE SET AT ALL POINTS MARKED
THUS \perp , ALL OF WHICH I CERTIFY TO BE CORRECT.

WE, ERIC J. NELSON REGISTERED SURVEYOR AND
GILES F. NELSON LICENSED PROFESSIONAL ENGINEER
HEREBY CERTIFY THAT WITH-IN DRAWINGS FOR
ROYAL BUSINESS PARK CONDOMINIUM PHASE 1
CONSISTING OF PAGES 1/3 THRU 3/3 ACCURATELY
SHOW THE BUILDINGS AS CONSTRUCTED.

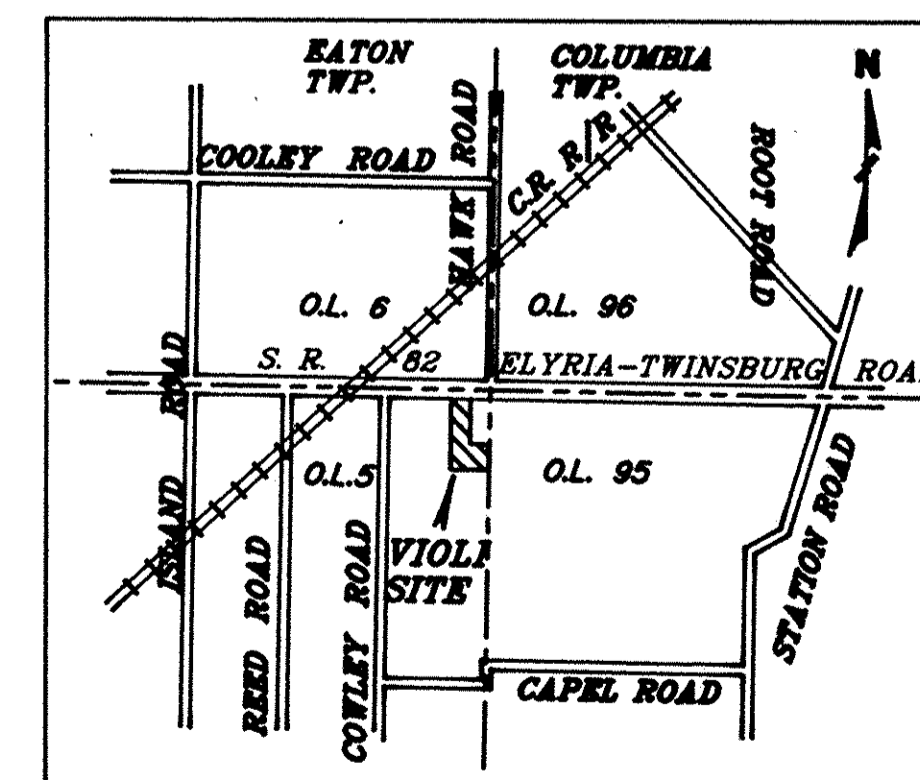
Eric J. Nelson
ERIC J. NELSON P.S. 7348

Giles Nelson
GILES NELSON P.E. 25207

Eric J. Nelson
ERIC J. NELSON P.S.
GILES NELSON & ASSOC. INC.
CIVIL ENGINEERING & SURVEYING CO.
27207 STATE ROUTE 82 - SUITE #2
COLUMBIA STA. OHIO 44028
PHONE 440 236 6267 FX 6270



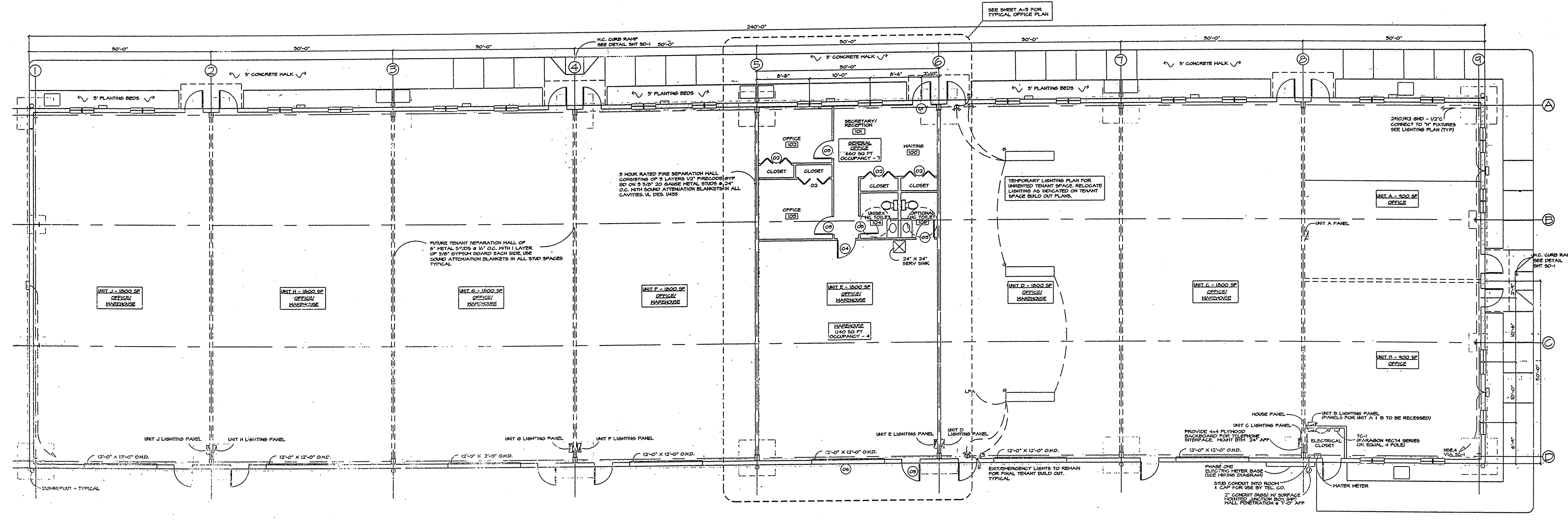
TRANSFERRED
IN COMPLIANCE WITH SEC. 319-202
OHIO REV. CODE
OCT 20 2003
MARK R. STEWART
LORAIN COUNTY AUDITOR



VICINITY MAP

OCT 20 2003
RECEIVED FOR RECORD
at 2:40 clock P.M. in the RECORD
VOL. 77 JUDITH M. NEDWICK
PAGE 74 Lorain County Recorder
To incl. \$ Plat - 218.46
11m Dec - 328.00
\$ 546.90

ROYAL BUSINESS PARK CONDOMINIUM PHASE ONE



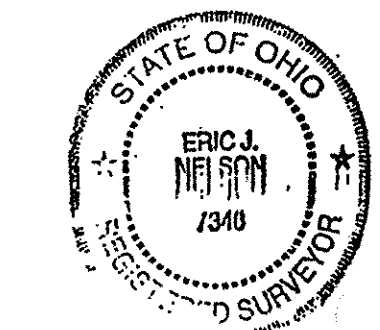
FLOOR PLAN
SCALE: 1/8" = 1'-0"

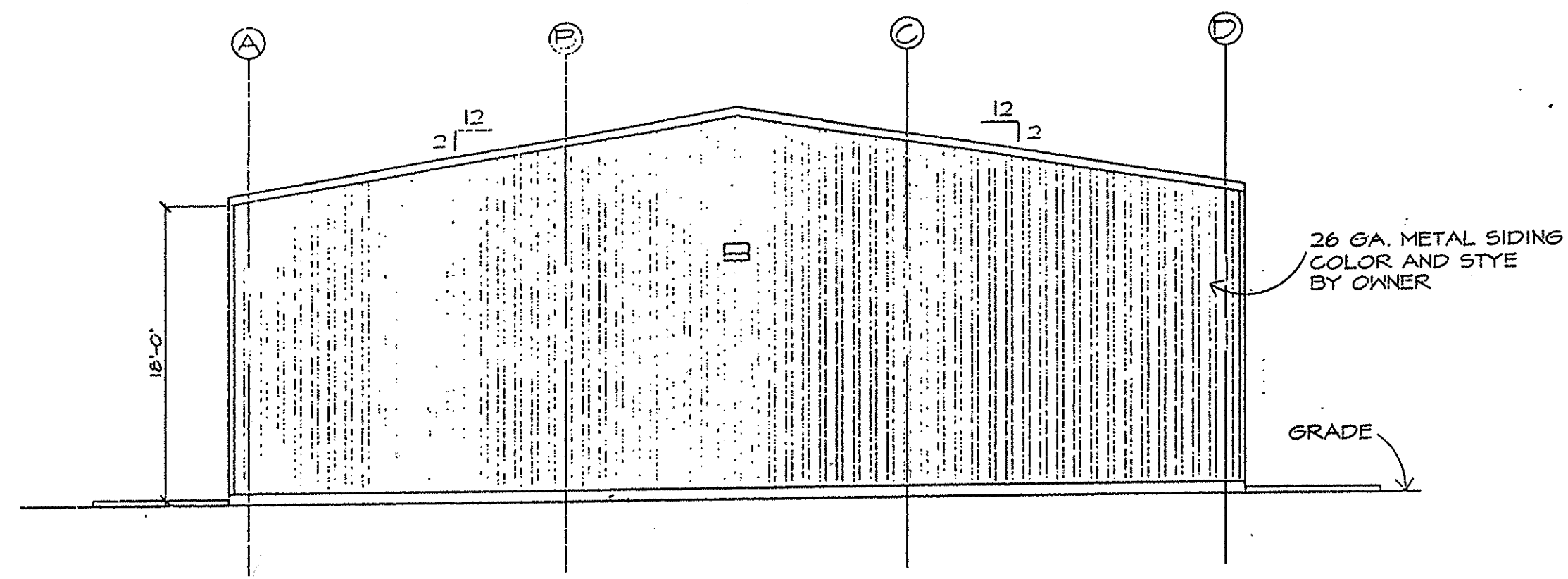


WE, ERIC J. NELSON REGISTERED SURVEYOR AND
 GILES F. NELSON LICENSED PROFESSIONAL ENGINEER
 HEREBY CERTIFY THAT WITH-IN DRAWINGS FOR
 ROYAL BUSINESS PARK CONDOMINIUM PHASE 1
 CONSISTING OF PAGES 1/3 THRU 3/3 ACCURATELY
 SHOW THE BUILDINGS AS CONSTRUCTED.

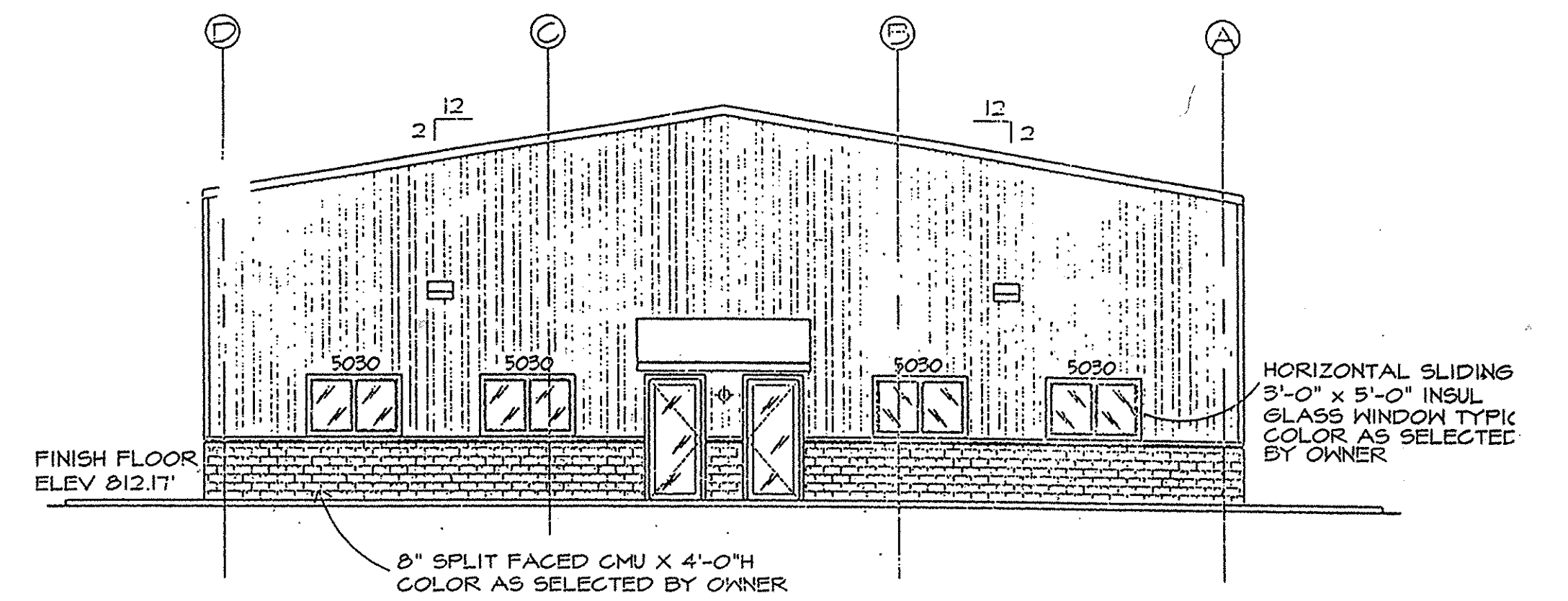
Eric J. Nelson
 ERIC J. NELSON P.S. 7348

Giles F. Nelson
 GILES NELSON P.E. 25207

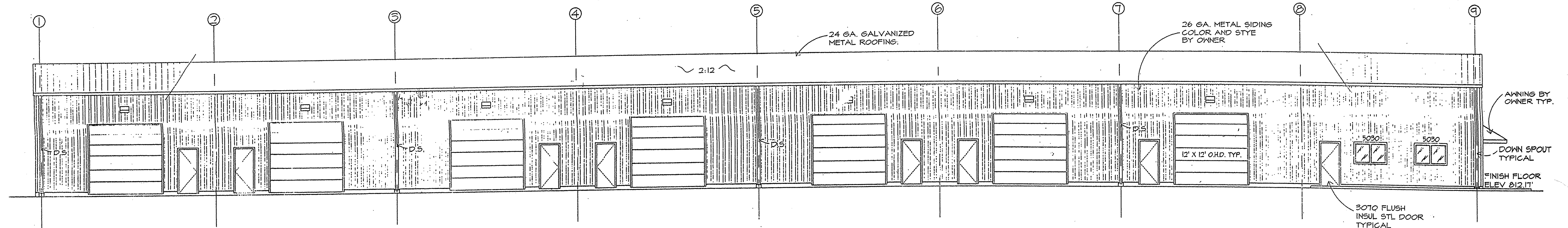




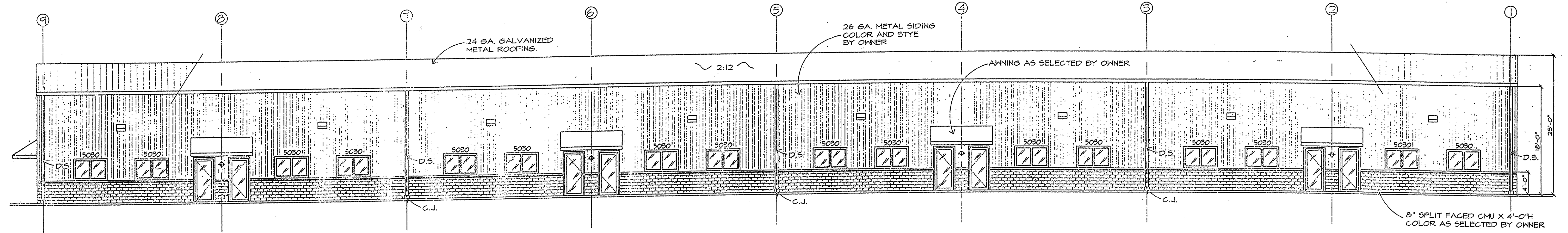
SOUTH ELEVATION
SCALE: 1/8"=1'-0"



NORTH ELEVATION
SCALE: 1/8"=1'-0"



EAST ELEVATION
SCALE: 1/8"=1'-0"



WEST ELEVATION
SCALE: 1/8"=1'-0"

**ROYAL BUSINESS PARK CONDOMINIUM
PHASE ONE**

WE, ERIC J. NELSON REGISTERED SURVEYOR AND GILES F. NELSON LICENSED PROFESSIONAL ENGINEER HEREBY CERTIFY THAT WITH-IN DRAWINGS FOR ROYAL BUSINESS PARK CONDOMINIUM PHASE 1 CONSISTING OF PAGES 1/3 THRU 3/3 ACCURATELY SHOW THE BUILDINGS AS CONSTRUCTED.



Eric J. Nelson
ERIC J. NELSON P.S. 7348

Giles Nelson
GILES NELSON P.E. 25207

