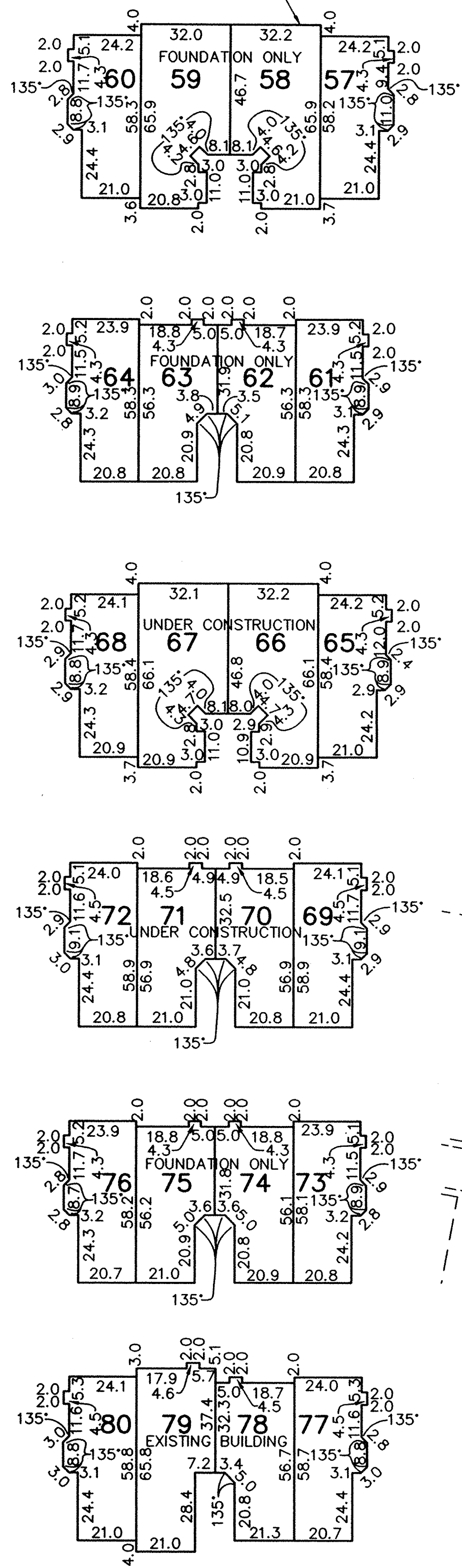
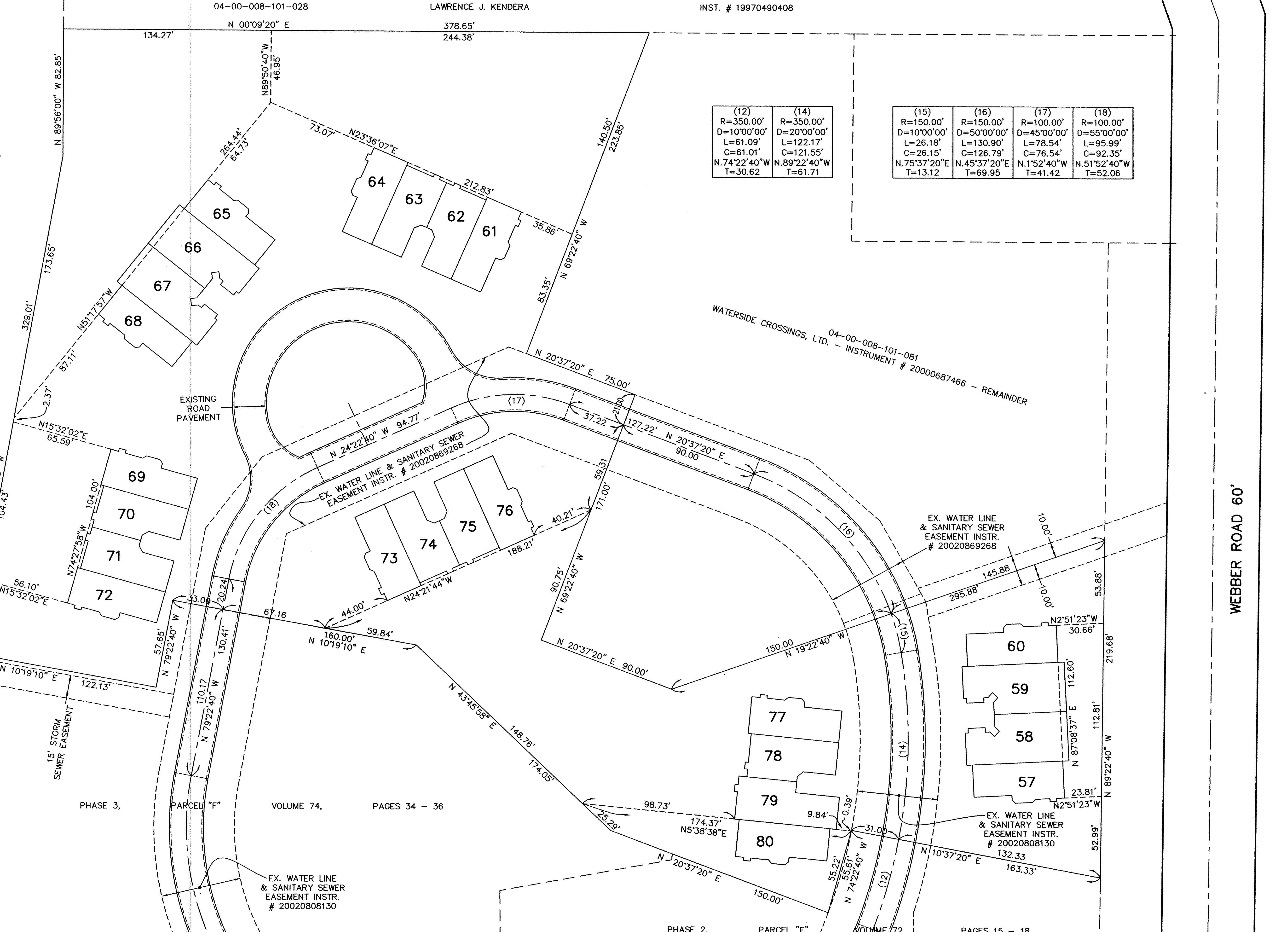


LIMITS OF FOUNDATION (TYPICAL)



WATERSIDE CROSSINGS, LTD. - INSTRUMENT # 20000687466 - REMAINDER



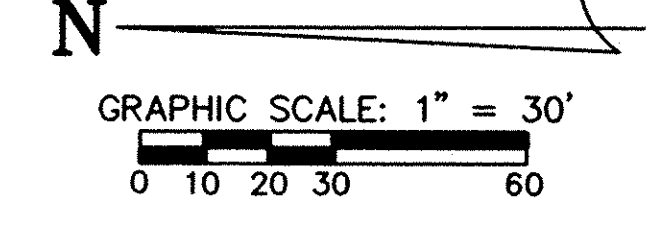
(12)	(14)
R=350.00'	R=350.00'
D=10'00'00"	D=20'00'00"
L=61.09'	L=122.17'
C=61.01'	C=121.55'
N.74'22'40"W	N.89'22'40"W
T=30.62	T=61.71

(15)	(16)	(17)	(18)
R=150.00'	R=150.00'	R=100.00'	R=100.00'
D=10'00'00"	D=50'00'00"	D=45'00'00"	D=55'00'00"
L=26.18'	L=130.90'	L=78.54'	L=95.99'
C=26.15'	C=126.79'	C=76.54'	C=92.35'
N.75'37'20"E	N.45'37'20"E	N.1'52'40"W	N.51'52'40"W
T=13.12	T=69.95	T=41.42	T=52.06

WATERSIDE CROSSINGS, LTD. - INSTRUMENT # 20000687466 - REMAINDER

WEBBER ROAD 60'

● DENOTES 3/8" DRILL HOLE USED



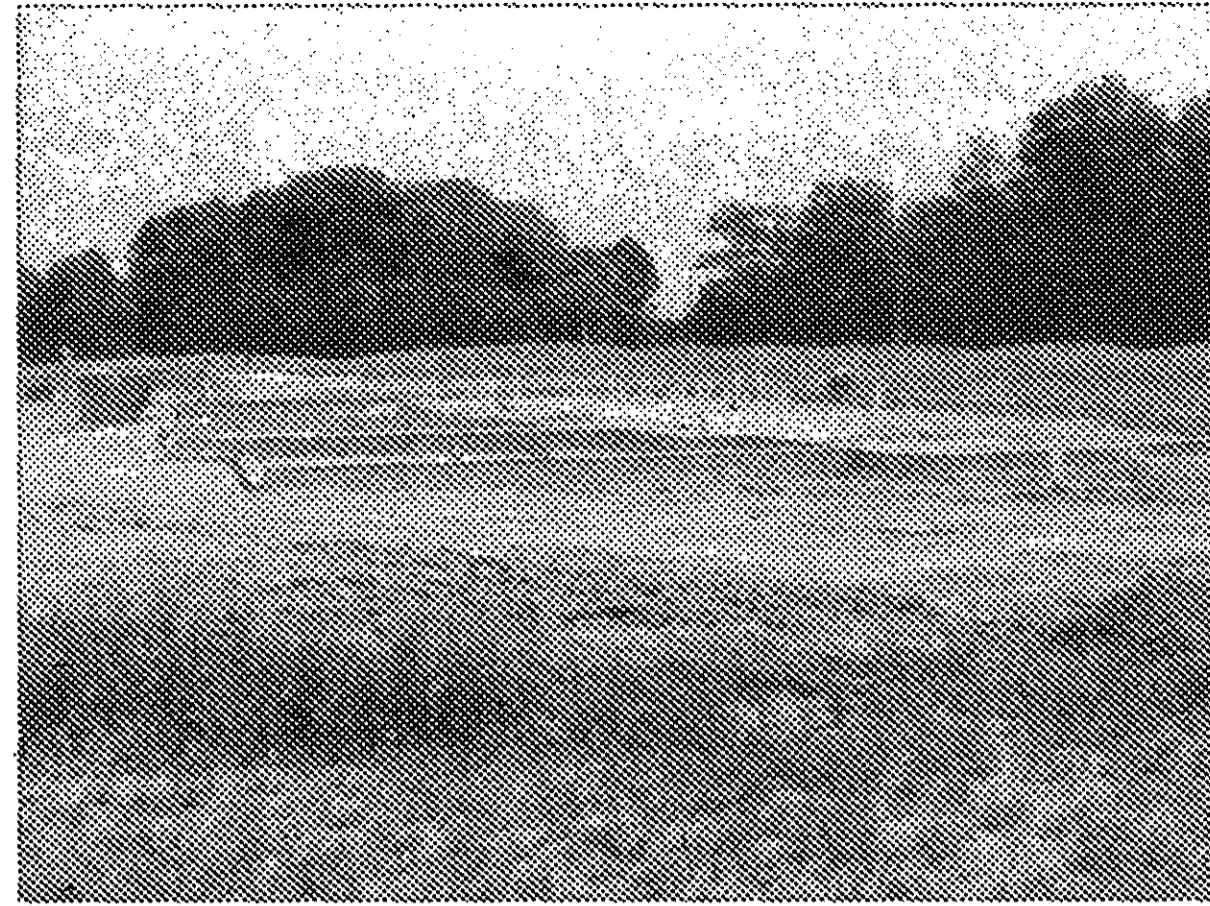
- NOTES:
- 1.) ALL DIMENSIONS ARE TO THE OUTSIDE OF THE FOUNDATION WALLS.
 - 2.) FOUNDATION CORNERS MEET AT 45, 90, OR 135 DEGREES, (UNLESS NOTED OTHERWISE).

REVISIONS	

**WATERSIDE CROSSINGS SOUTH
CONDOMINIUM PHASE 4**
OF PART OF ORIGINAL AVON TWP. SECTION NO. 8
CITY OF AVON LAKE, LORAIN COUNTY, OHIO

**THE HENRY G. REITZ
ENGINEERING COMPANY**
4214 ROCKY RIVER DRIVE
CLEVELAND, OHIO 44135
PHONE: (216) 251-3033

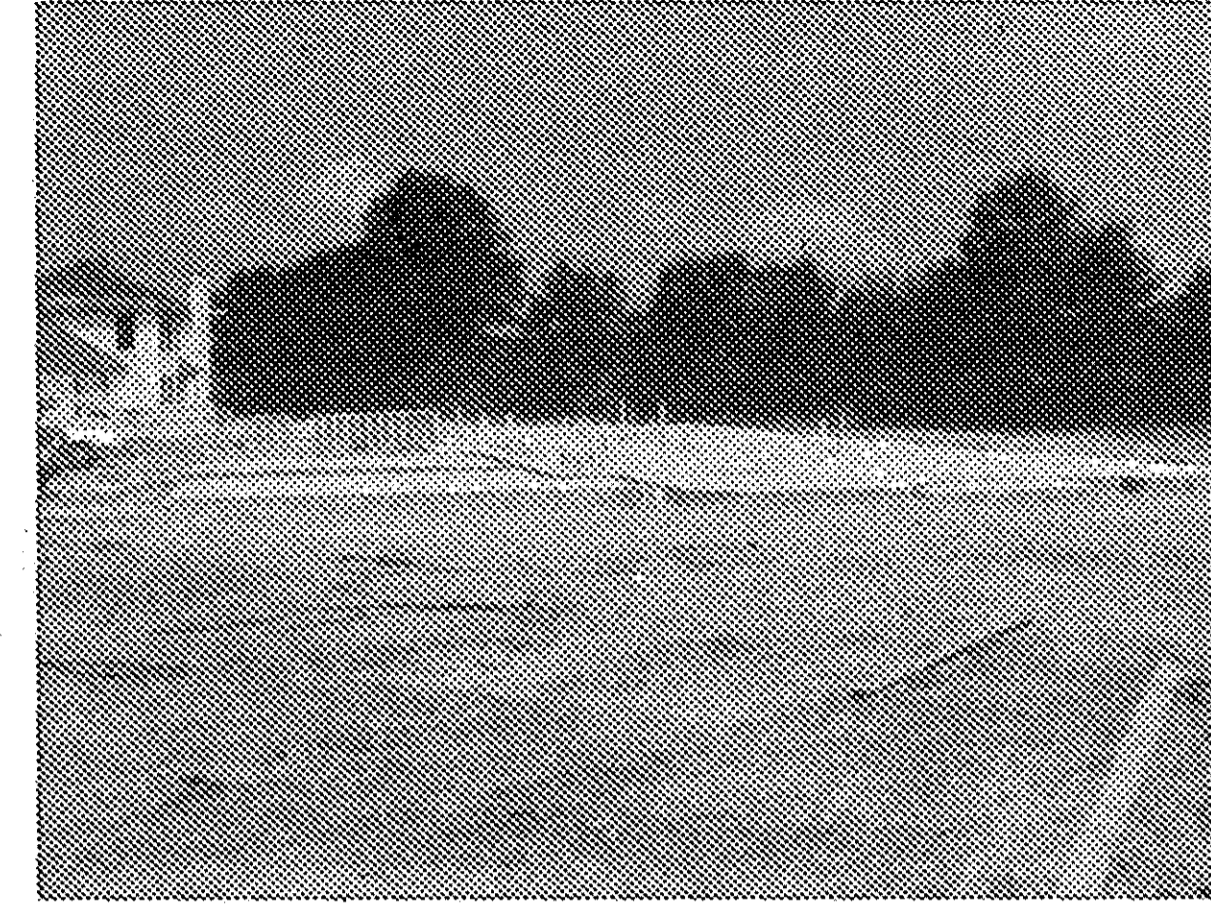
2
3
AUGUST
2003



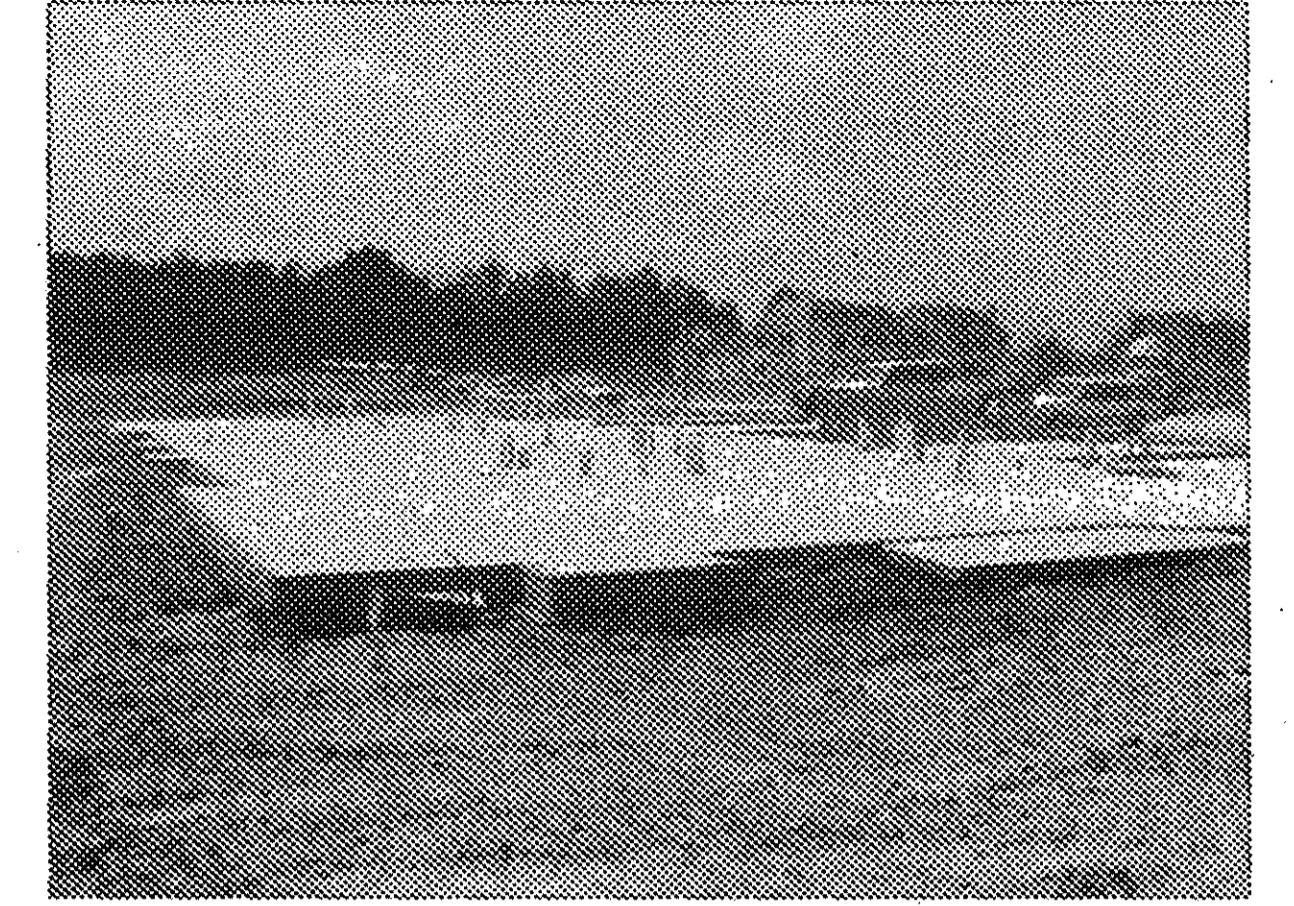
57-60 WEST



57-60 EAST



61-64 SOUTH



61-64 NORTH



65-68 SOUTH



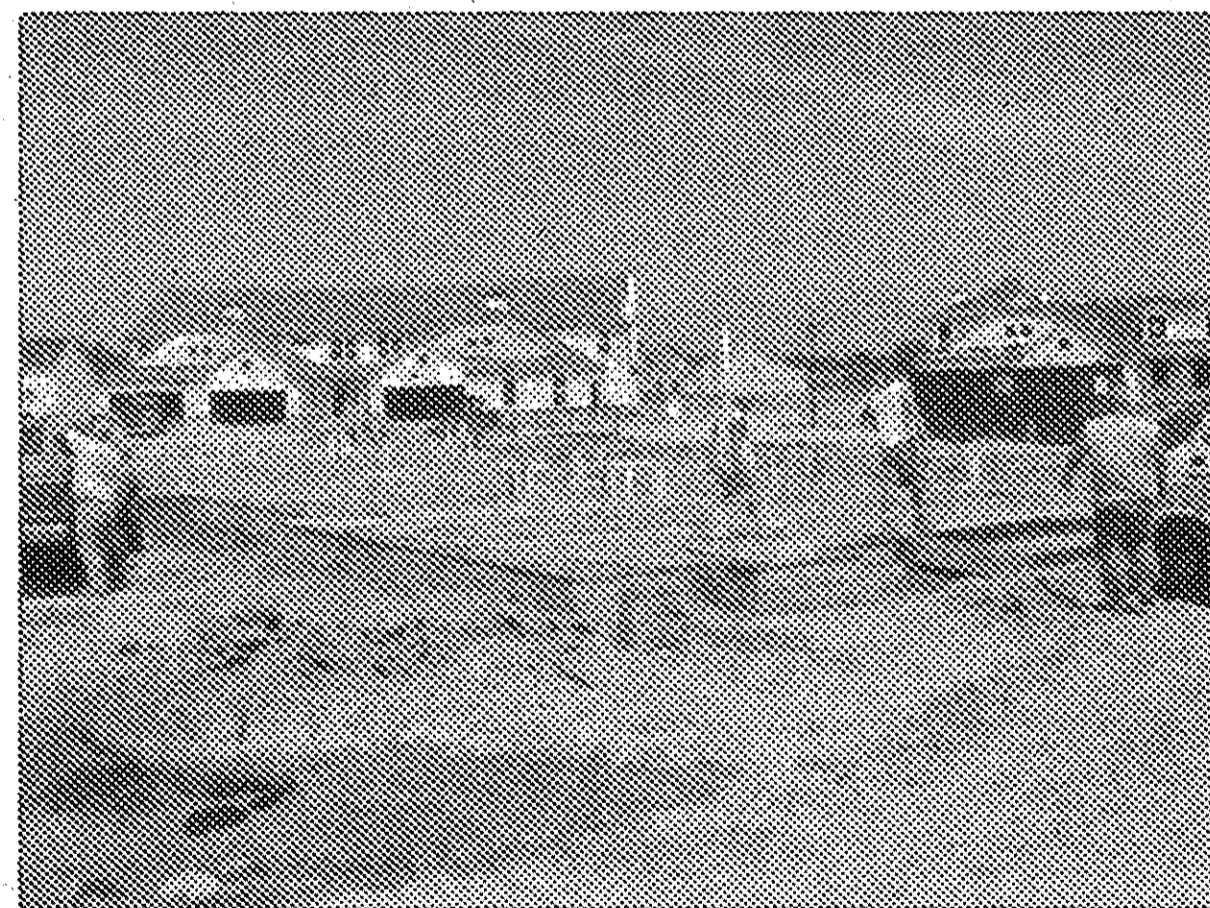
65-68 NORTH



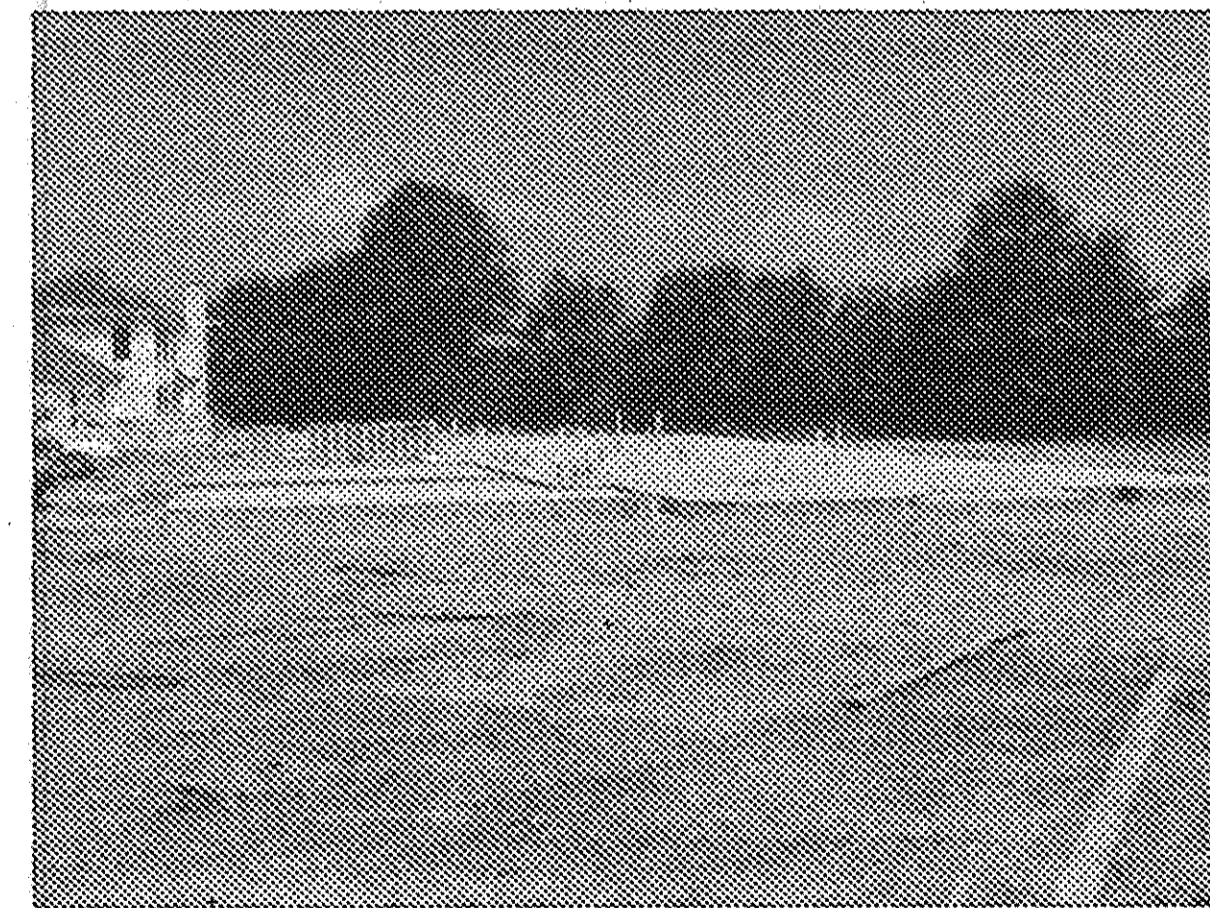
69-72 SOUTH



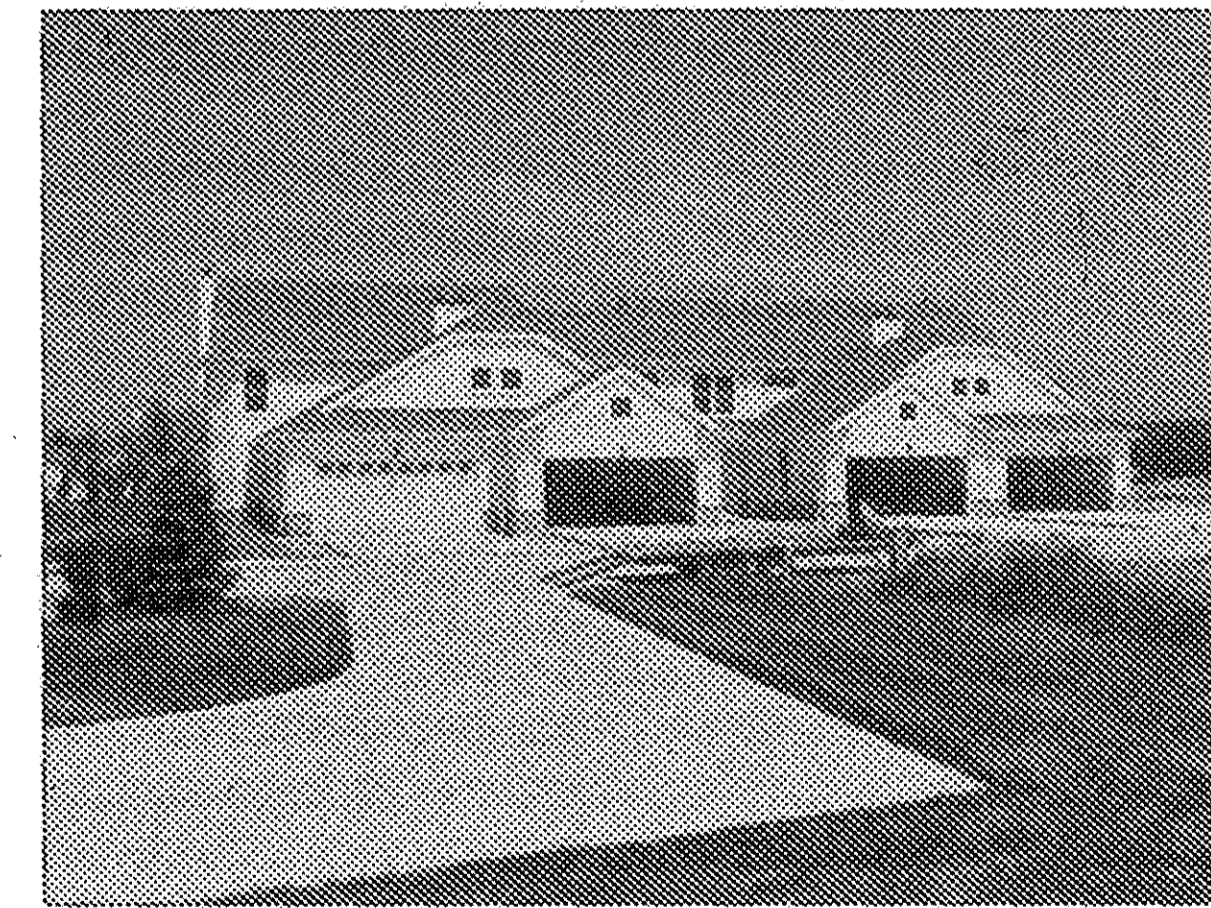
69-72 NORTH



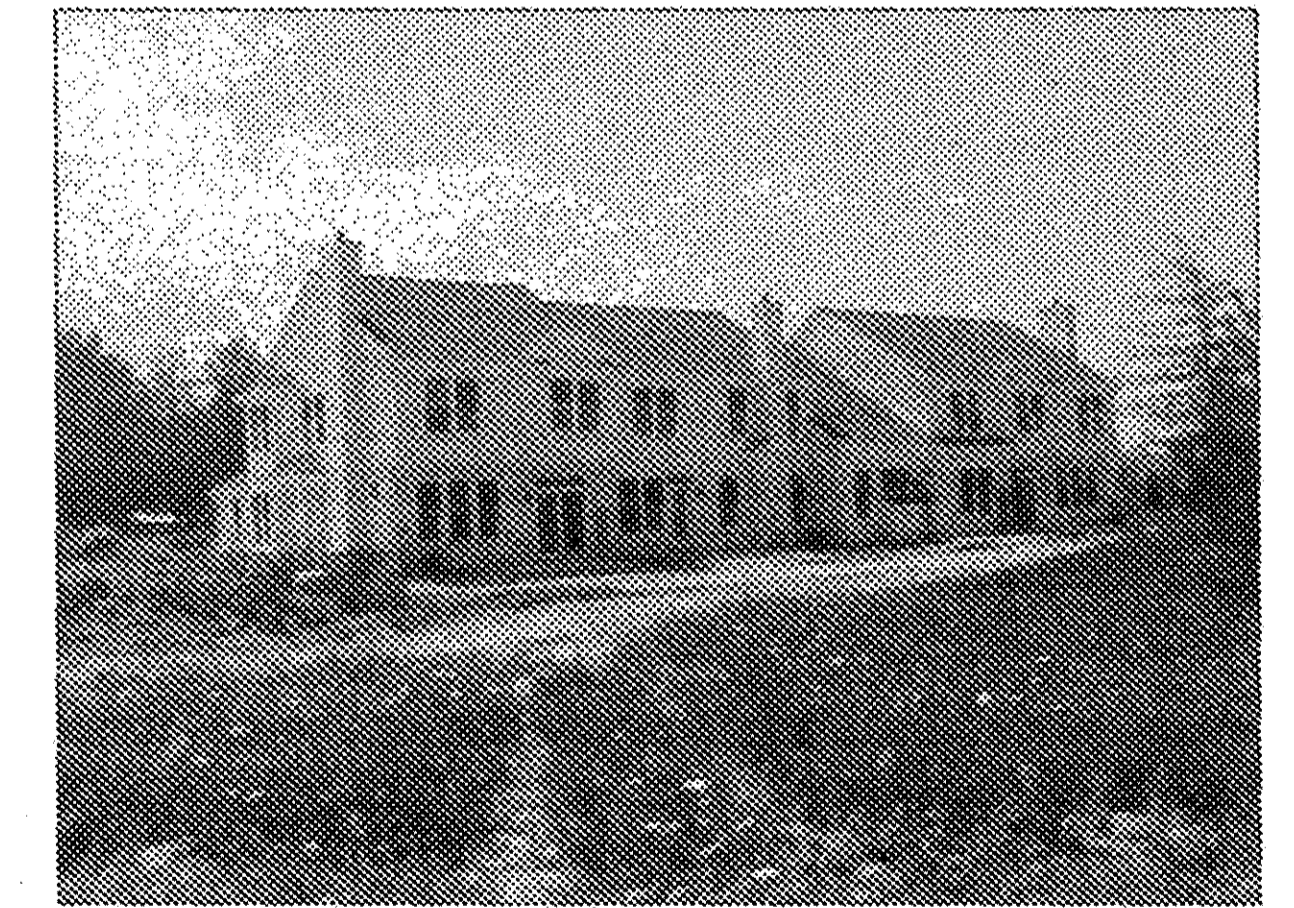
73-76 SOUTH



73-76 NORTH



77-80 SOUTH



77-80 NORTH

REVISIONS	

**WATERSIDE CROSSINGS SOUTH
CONDOMINIUM PHASE 4**
OF PART OF ORIGINAL AVON TWP. SECTION NO. 8
CITY OF AVON LAKE, LORAIN COUNTY, OHIO

**THE HENRY G. REITZ
ENGINEERING COMPANY**
4214 ROCKY RIVER DRIVE
CLEVELAND, OHIO 44135
PHONE: (216) 251-3033

3
3
AUGUST 2003