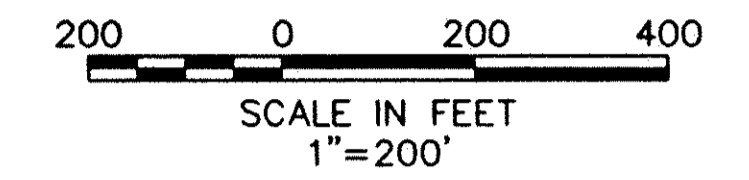


STATE JOB NUMBER	FHWA REGION	STATE	PROJECT
X	5	OHIO	X

LORAIN COUNTY
CITY OF ELYRIA
LOR-INDUSTRIAL PARKWAY

CENTERLINE PLAT



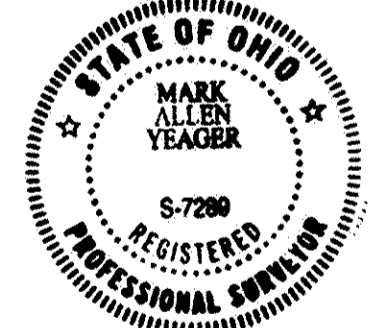
MONUMENT LEGEND

- ⊠ EXISTING MONUMENT BOX
- MONUMENT BOX SET
- EXISTING IRON PIPE/PIN
- IRON PIPE/PIN SET

NO TRANSFER NECESSARY
MARK R. STEWART
LORAIN COUNTY AUDITOR
2/12/03
DEPUTY

- NOTE:
- 1) THE PROPOSED RIGHT OF WAY SHALL BE REFERENCED FROM THE CENTERLINE OF RIGHT OF WAY.
 - 2) THE PLACING OF THE MONUMENTS SHALL BE UNDER THE DIRECTION OF A REGISTERED SURVEYOR AND ARE TO BE SET AS SHOWN BY THE HIGHWAY CONTRACTOR AT THE TIME OF CONSTRUCTION. ANY ALTERATIONS, WITH PRIOR APPROVAL OF THE CITY OF ELYRIA, SHALL BE NOTED.
 - 3) I HEREBY STATE THAT THIS PLAT HAS BEEN PREPARED TO DEPICT THE RESULTS OF A SURVEY MADE FOR THE CITY OF ELYRIA, LORAIN COUNTY, OHIO. IT HAS BEEN PREPARED BY ME OR UNDER MY DIRECT SUPERVISION.

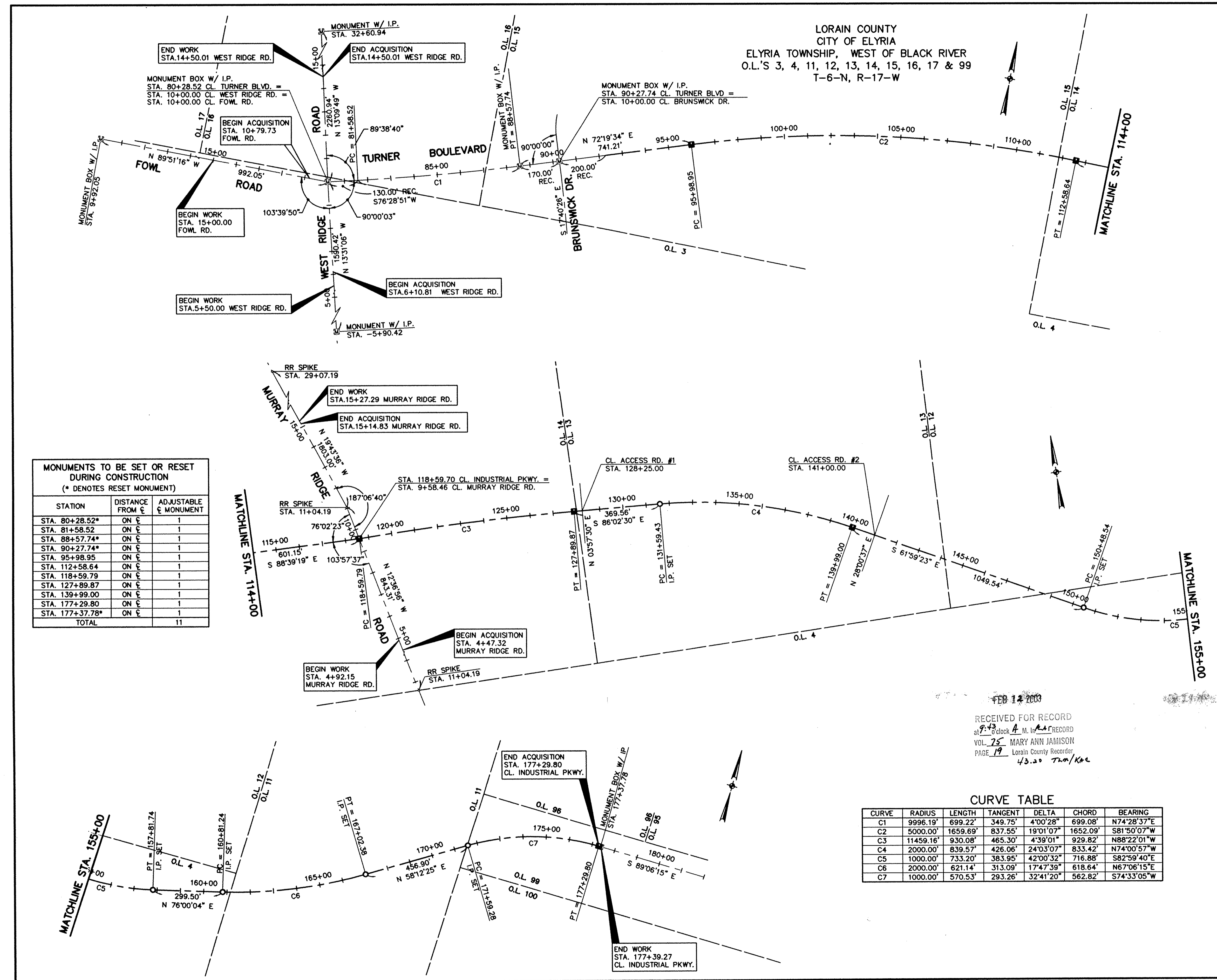
Mark A. Yeager
MARK A. YEAGER
REGISTERED SURVEYOR NO. 7289
DATE 12/11/02



RECEIVED FOR RECORD
at 9:43 clock A.M. in RECORD
VOL. 75 MARY ANN JAMISON
PAGE 19 Lorain County Recorder
43.20 Tm/Khl

CURVE TABLE

CURVE	RADIUS	LENGTH	TANGENT	DELTA	CHORD	BEARING
C1	9996.19'	699.22'	349.75'	4°00'28"	699.08'	N74°28'37"E
C2	5000.00'	1659.69'	837.55'	19°01'07"	1652.09'	S81°50'07"W
C3	11459.16'	930.08'	465.30'	4°39'01"	929.82'	N88°22'01"W
C4	2000.00'	839.57'	426.06'	24°03'07"	833.42'	N74°00'57"W
C5	1000.00'	733.20'	383.95'	42°00'32"	716.88'	S82°59'40"E
C6	2000.00'	621.14'	313.09'	17°47'39"	618.64'	N67°06'15"E
C7	1000.00'	570.53'	293.26'	32°41'20"	562.82'	S74°33'05"W



MONUMENTS TO BE SET OR RESET DURING CONSTRUCTION
(* DENOTES RESET MONUMENT)

STATION	DISTANCE FROM E	ADJUSTABLE MONUMENT
STA. 80+28.52*	ON E	1
STA. 81+58.52	ON E	1
STA. 88+57.74*	ON E	1
STA. 90+27.74*	ON E	1
STA. 95+98.95	ON E	1
STA. 112+58.64	ON E	1
STA. 118+59.79	ON E	1
STA. 127+89.87	ON E	1
STA. 139+99.00	ON E	1
STA. 177+29.80	ON E	1
STA. 177+37.78*	ON E	1
TOTAL		11

INDUSTRIAL PARKWAY

REV.	DATE	DESCRIPTION
DATE OF COMPLETION		OCTOBER 26, 2001
Prepared For: City of Elyria By: KS Associates, Inc.		