

SHEET INDEX	SHEET
PLAN, WEST HALF	1
PLAN, EAST HALF	2
DETAILS	3 THRU 8

LEGEND
 LIMITED COMMON AREA

ACREAGE BREAKDOWN:

TOTAL SITE...	726,984 SQ. FT., - 16.6892 ACRES (AREA TO R/W'S)
PHASE 1...	101,075 SQ. FT., - 2.3203 ACRES
UNITS 1 THRU 10...	15,900 SQ. FT., - 0.3650 ACRES
PHASE 2...	52,844 SQ. FT., - 1.2131 ACRES
UNITS 11 THRU 18...	13,418 SQ. FT., - 0.3080 ACRES
PHASE 3...	35,168 SQ. FT., - 0.8073 ACRES
UNITS 19 THRU 24...	10,615 SQ. FT., - 0.2436 ACRES
PHASE 4...	23,232 SQ. FT., - 0.5333 ACRES
UNITS 25 THRU 28...	7,880 SQ. FT., - 0.1808 ACRES
PHASE 5...	40,820 SQ. FT., - 0.9370 ACRES
UNITS 29 THRU 40...	16,585 SQ. FT., - 0.3807 ACRES
PHASE 6...	14,301 SQ. FT., - 0.3283 ACRES
UNITS 41 THRU 42...	2,739 SQ. FT., - 0.0067 ACRES
PHASE 7...	24,327 SQ. FT., - 0.5585 ACRES
UNITS 43 THRU 47...	8,905 SQ. FT., - 0.2045 ACRES
PHASE 8...	35,510 SQ. FT., - 0.8152 ACRES
UNITS 48 THRU 55...	14,499 SQ. FT., - 0.3329 ACRES
PHASE 9...	52,114 SQ. FT., - 1.1964 ACRES
UNITS 56 THRU 67...	20,284 SQ. FT., - 0.4656 ACRES
PHASE 10...	85,587 SQ. FT., - 1.9648 ACRES
UNITS 68 THRU 81...	31,139 SQ. FT., - 0.7149 ACRES
PHASE 11...	46,315 SQ. FT., - 1.0633 ACRES
UNITS 86 THRU 97...	20,029 SQ. FT., - 0.4598 ACRES
REMAINDER...	219,176 SQ. FT., - 5.0315 ACRES

THE COTTAGES AT SAVANNAH CONDOMINIUM PHASE 11

THIS IS TO CERTIFY THAT AT THE REQUEST OF THE OWNERS I HAVE SURVEYED AND PLATTED "THE COTTAGES AT SAVANNAH CONDOMINIUM PHASE 11" AS SHOWN HEREON AND CONTAINING 1.0633 ACRES OF LAND IN ORIGINAL LOT NO. 28 OF RIDGEVILLE TOWNSHIP, LORAIN COUNTY, OHIO. AT ALL POINTS THUSLY INDICATED •, IRON PIN MONUMENTS WERE FOUND OR SET. DISTANCES ARE SHOWN IN FEET AND DECIMAL PARTS THEREOF. BEARINGS SHOWN ARE BASED ON THE CENTERLINE OF STONEY RIDGE ROAD HAVING A BEARING OF N.30°44'00"W, AND ARE TO BE USED TO DENOTE ANGLES ONLY. THE PLAN REPRESENTS A SURVEY IN WHICH THE TRAVERSE OF THE EXTERIOR BOUNDARIES OF THE TRACT AND OF EACH BLOCK WHEN COMPUTED FROM FIELD MEASUREMENTS OF THE GROUND CLOSED WITHIN A LIMIT OF ERROR OF ONE (1) FOOT TO TEN THOUSAND (10,000) FEET IN PERIMETER BEFORE BALANCING THE SURVEY. THE SURVEY MEETS THE MINIMUM STANDARDS FOR LAND SURVEYS, IN SECTION 4733-37 OF THE OHIO ADMINISTRATIVE CODE AND ADJACENT PROPERTY DESCRIPTIONS HAVE BEEN CONSIDERED IN PERFORMING THIS SURVEY. ALL OF WHICH I CERTIFY TO BE CORRECT.

HAPONEK & ASSOCIATES, INC.

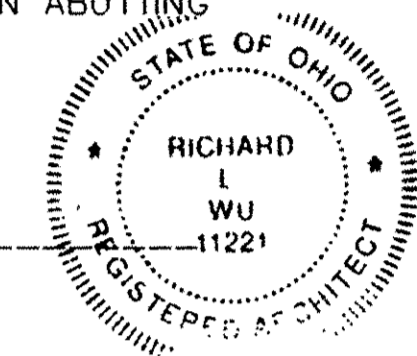
BY: *D.A.P.*
 DANE A. HAPONEK, REG. SURVEYOR NO. 5-6211



CERTIFICATION

THIS IS TO CERTIFY THAT THE ATTACHED DRAWINGS ACCURATELY REPRESENT THE BUILDINGS AS CONSTRUCTED AND THAT THERE ARE NO ENCROACHMENTS ON ADJUTING PROPERTIES.

Richard Lee Wu
 RICHARD LEE WU, REG. ARCHITECT NO. 11221

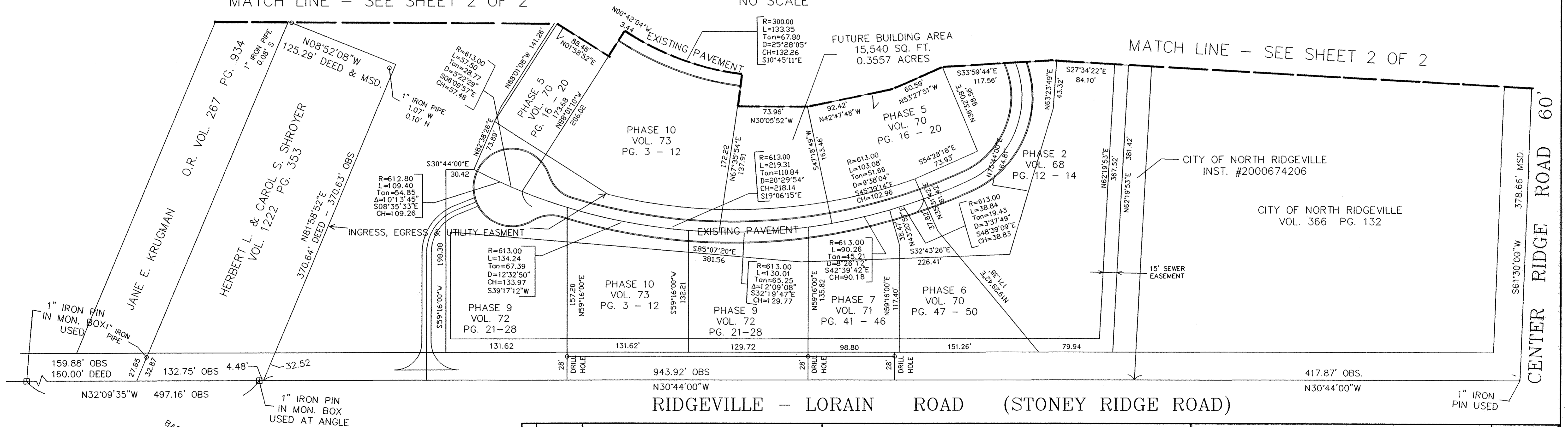


NOTE:
 UNITS NUMBERS 86 THRU 97, AS PHASE 11 OF THE CONDOMINIUM PLAN, HAVE EXCLUSIVE USE AREAS WHICH ARE PATIOS, DRIVES, PORCHES AND AN AREA (3) FEET AROUND THE FOUNDATION, DRIVES, PATIOS AND PORCHES.

MATCH LINE - SEE SHEET 2 OF 2

NO SCALE

MATCH LINE - SEE SHEET 2 OF 2



DENOTES: 5/8" IRON PIN FOUND

GRAPHIC SCALE
 0 25 50 75 100
 SCALE: 1" = 50'

BASED ON THE CENTERLINE OF STONEY RIDGE ROAD HAVING A BEARING OF N.30°44'00"W

REVISIONS	DATE	DESCRIPTION

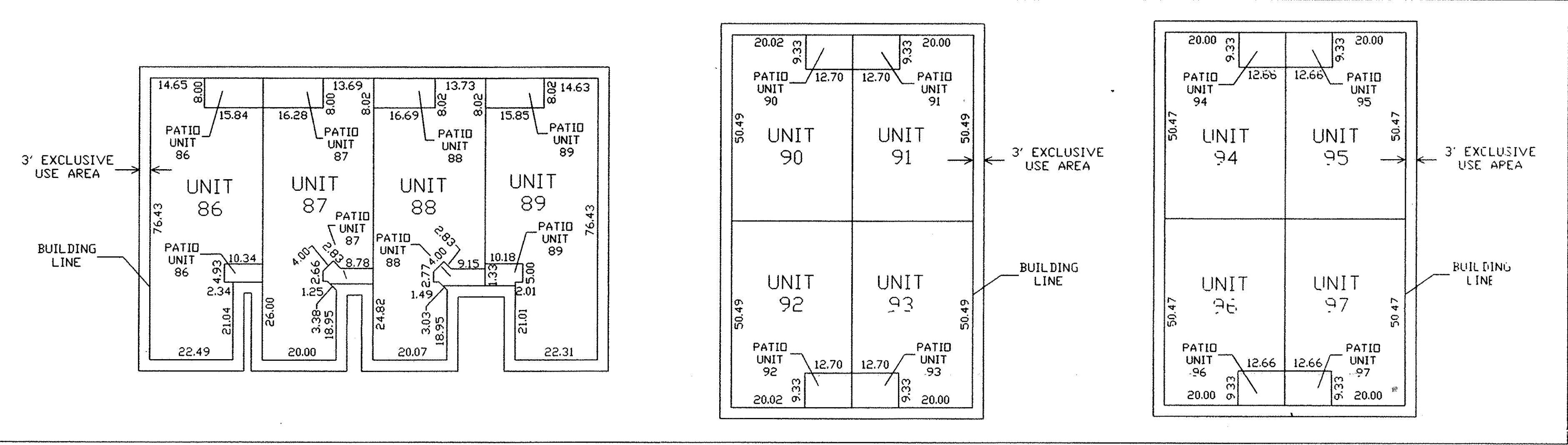
THE COTTAGES AT SAVANNAH CONDOMINIUM PHASE 11

OF PART OF ORIGINAL RIDGEVILLE TWP. SECTION NO. 28
 CITY OF NORTH RIDGEVILLE, LORAIN COUNTY, OHIO

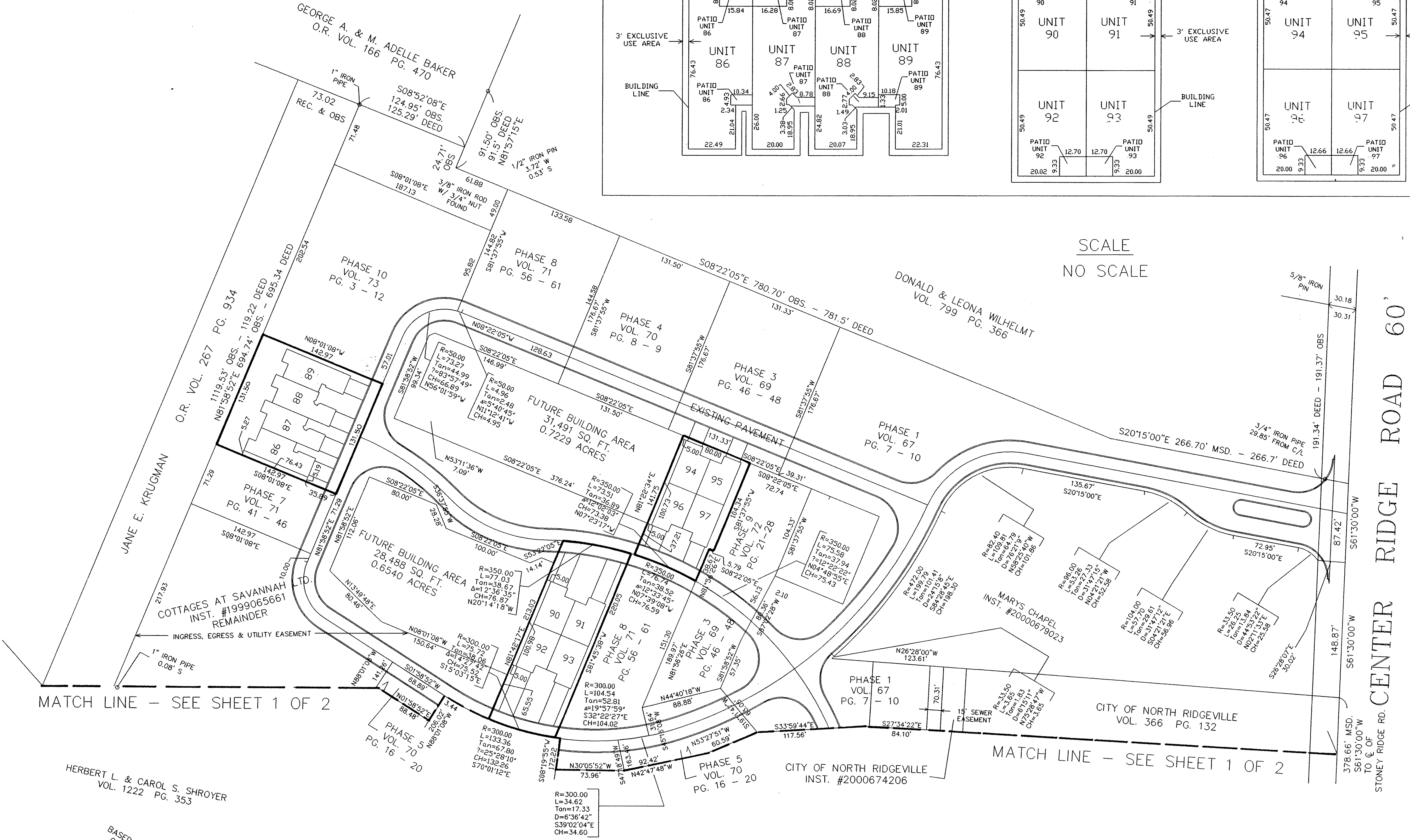
HAPONEK & ASSOCIATES INC.
 ENGINEERS AND SURVEYORS

5444 STONEY RIDGE RD.
 NORTH RIDGEVILLE, OHIO 44039
 PHONE: (440) 327-4776

1
 8
 OCT.
 2002



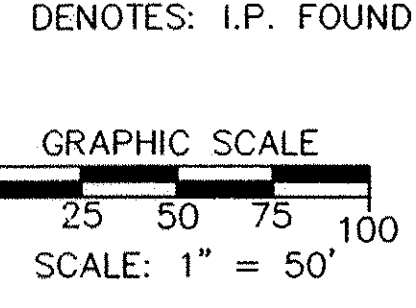
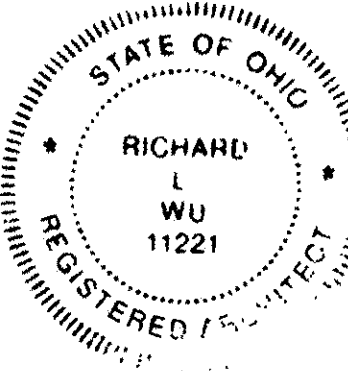
SCALE
NO SCALE



MATCH LINE - SEE SHEET 1 OF 2

MATCH LINE - SEE SHEET 1 OF 2

CENTER RIDGE ROAD 60'



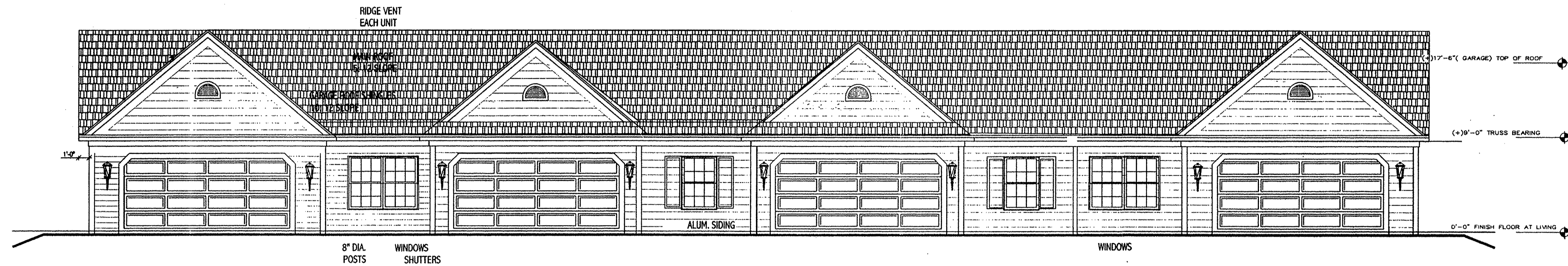
BASED ON THE CENTERLINE OF STONEY RIDGE ROAD HAVING A BEARING OF N 30° 44' 00\"/>

REVISIONS	DATE	DESCRIPTION

THE COTTAGES AT SAVANNAH CONDOMINIUM PHASE 11
OF PART OF ORIGINAL RIDGEVILLE TWP. SECTION NO. 28
CITY OF NORTH RIDGEVILLE, LORAIN COUNTY, OHIO

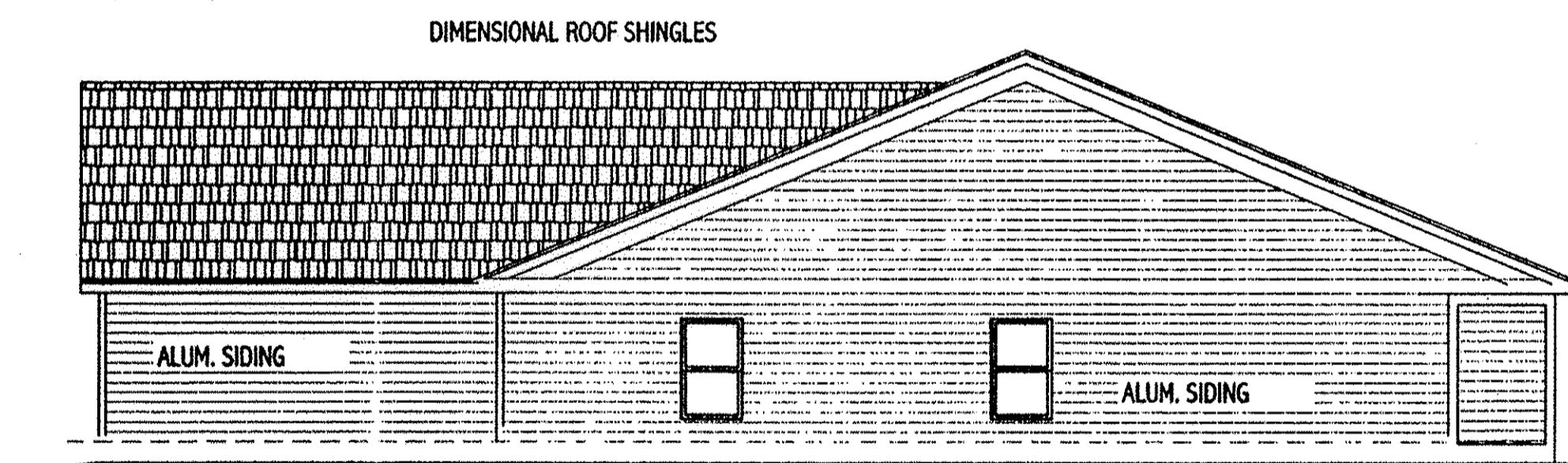
HAPONEK & ASSOCIATES INC. ENGINEERS AND SURVEYORS
5444 STONEY RIDGE RD.
NORTH RIDGEVILLE, OHIO 44039
PHONE: (440) 327-4776

2
8
OCT.
2002



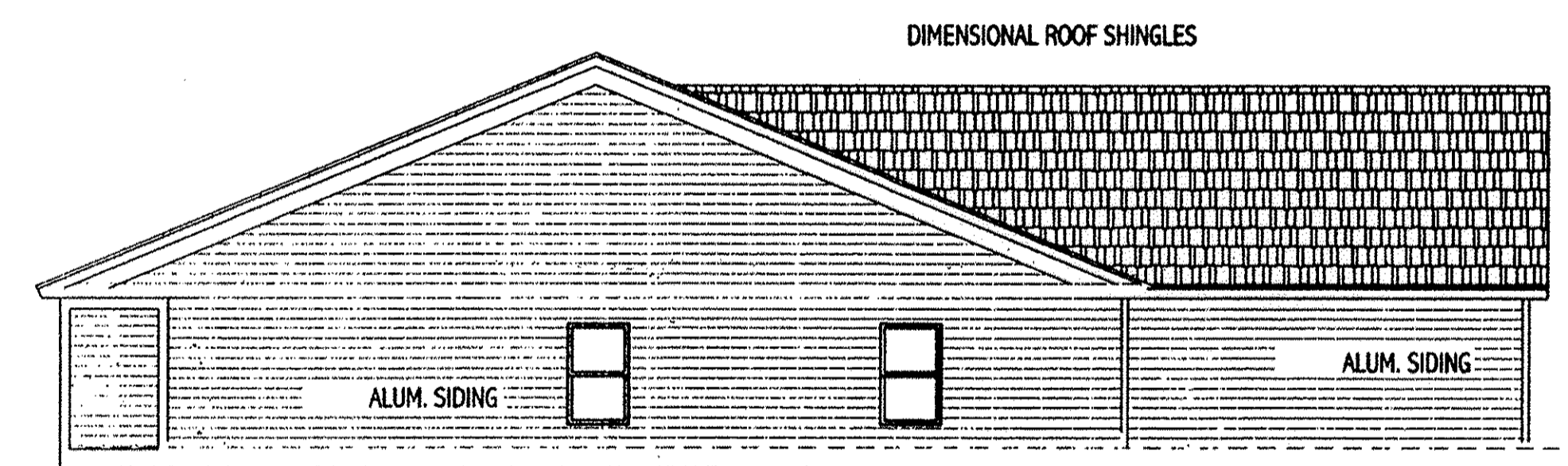
FRONT ELEVATION

3/16" = 1'-0"



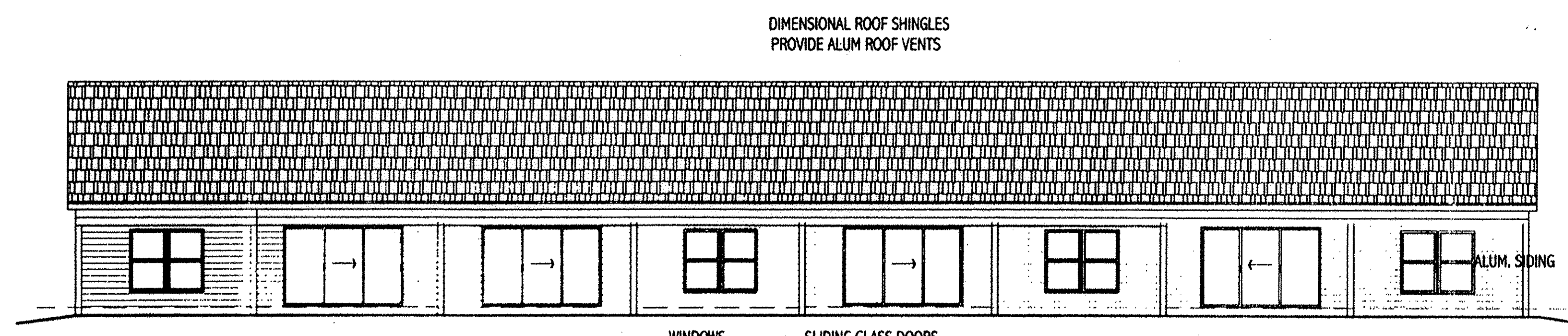
RIGHT ELEVATION

1/8" = 1'-0"



LEFT ELEVATION

1/8" = 1'-0"

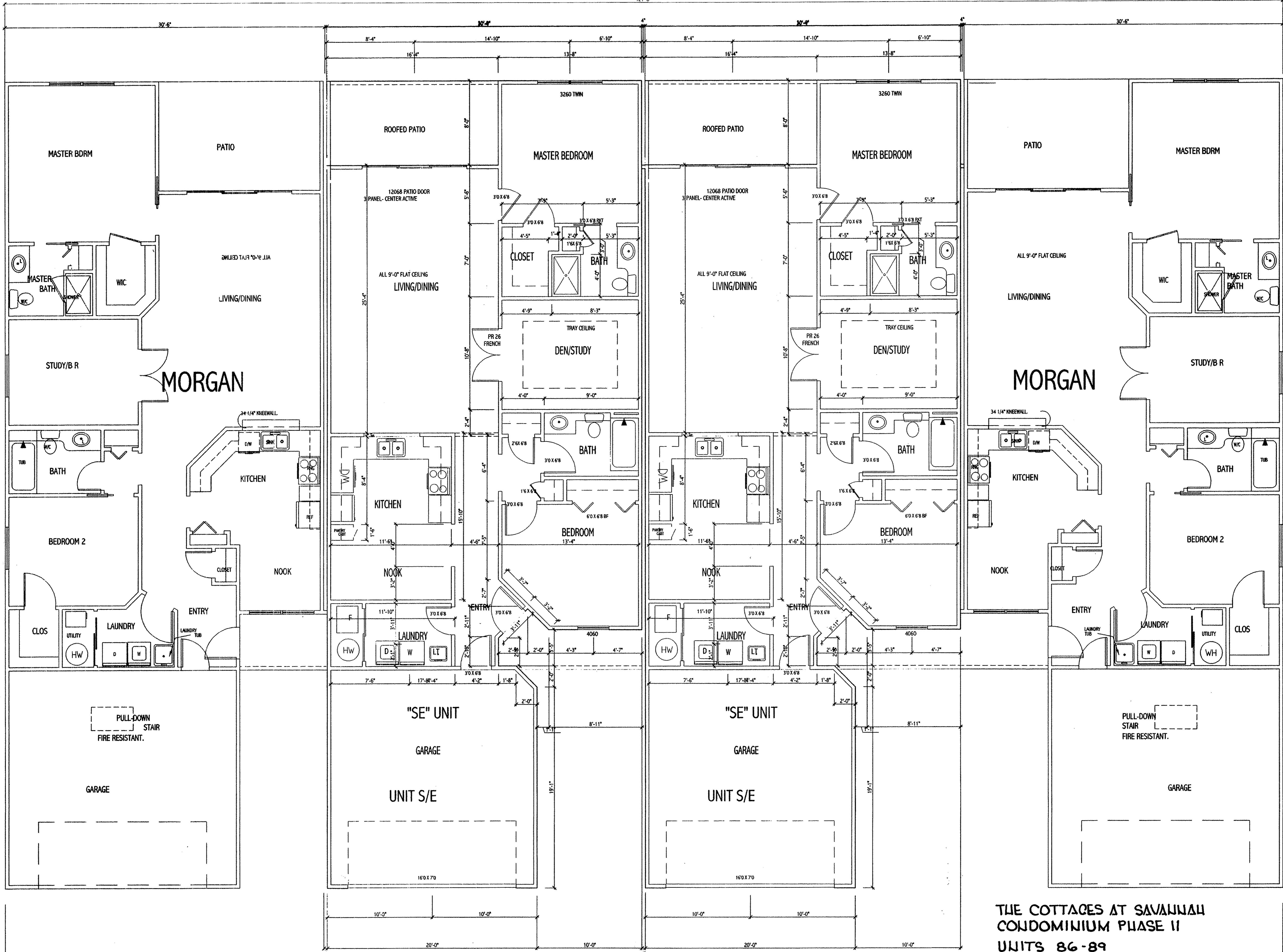


REAR ELEVATION

1/8" = 1'-0"

THE COTTAGES AT SAVANNAH
 CONDOMINIUM PHASE II
 UNITS 86-89



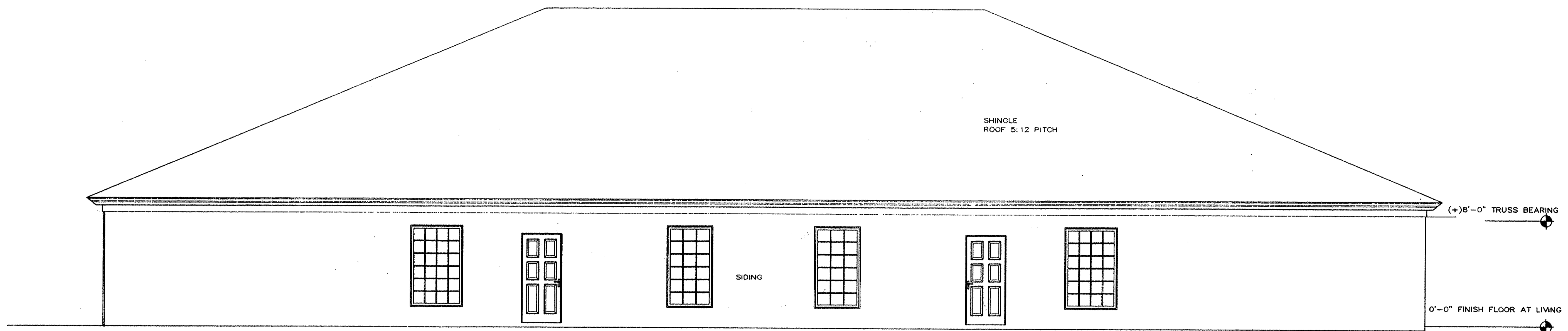



MORGAN

MORGAN

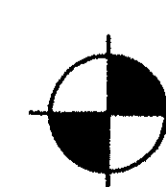
**THE COTTAGES AT SAVANNAH
CONDOMINIUM PHASE II
UNITS 86-89**





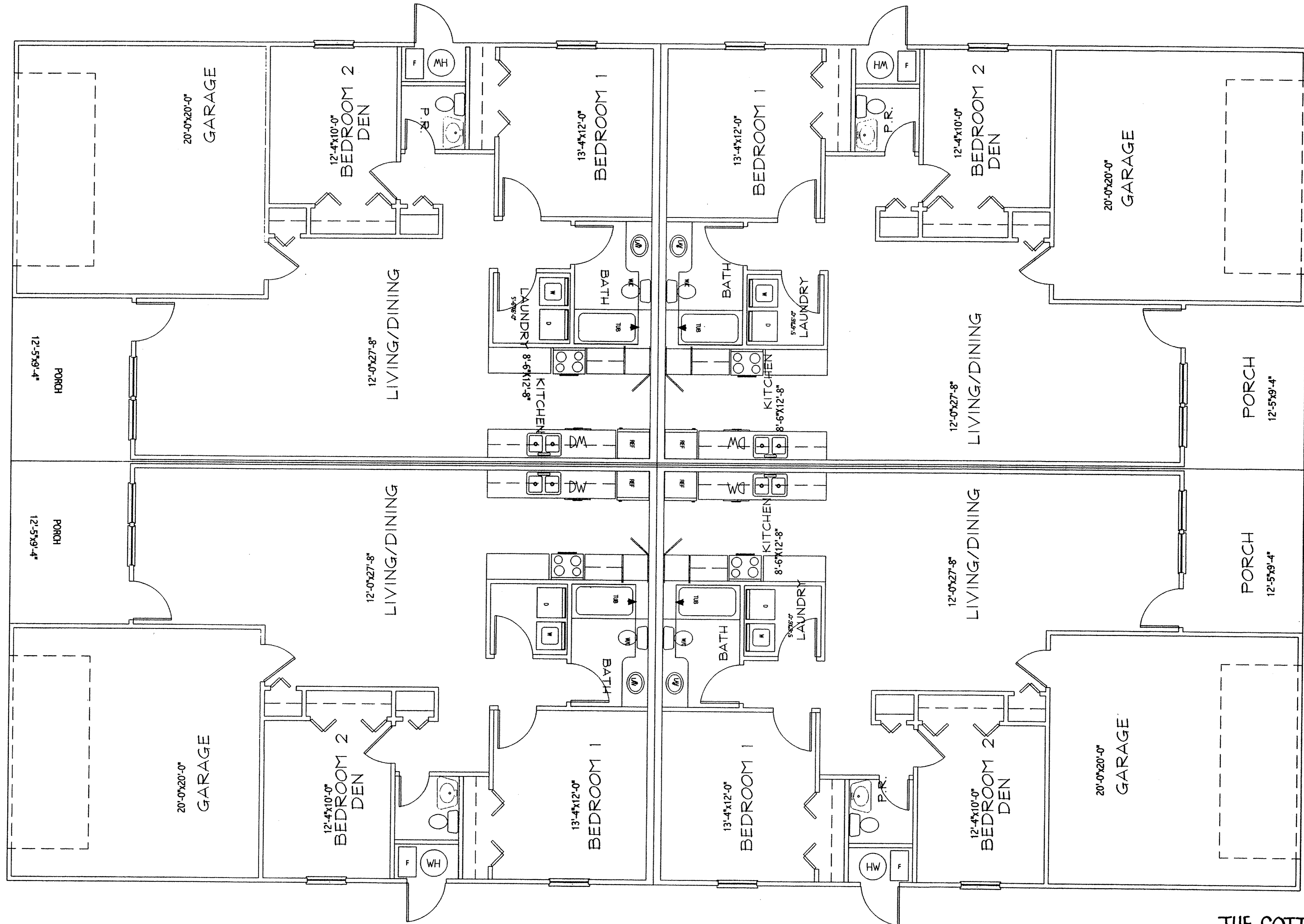

SIDE ELEVATION
 SCALE: 1/4"=1'-0"




FRONT ELEVATION
 SCALE: 1/4"=1'-0"

THE COTTAGES AT SAVANNAH
CONDOMINIUM PHASE II
UNITS 90-93

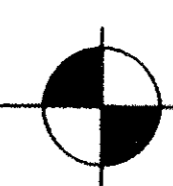


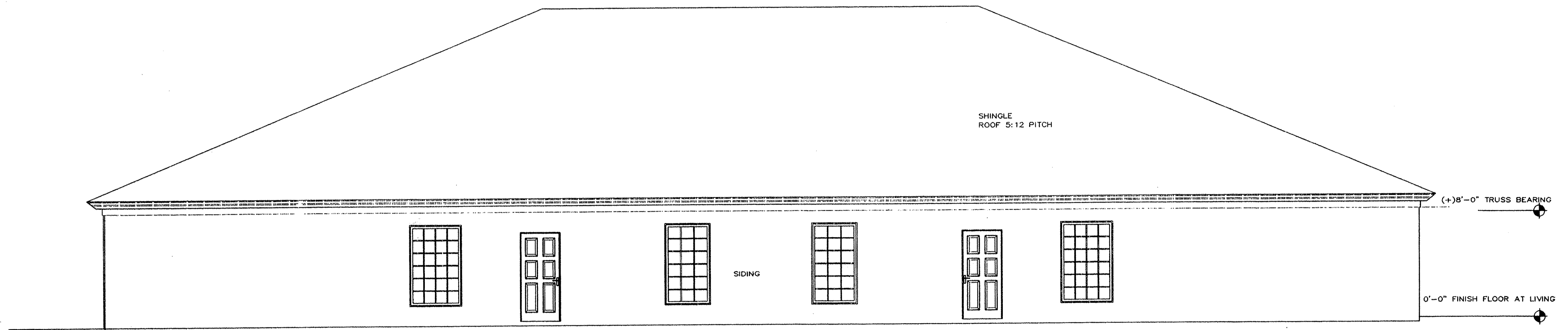



THE COTTAGES AT SAVANNAH
CONDOMINIUM PHASE II
UNITS 90-93

FLOOR PLAN


SCALE: 1/4"=1'-0"





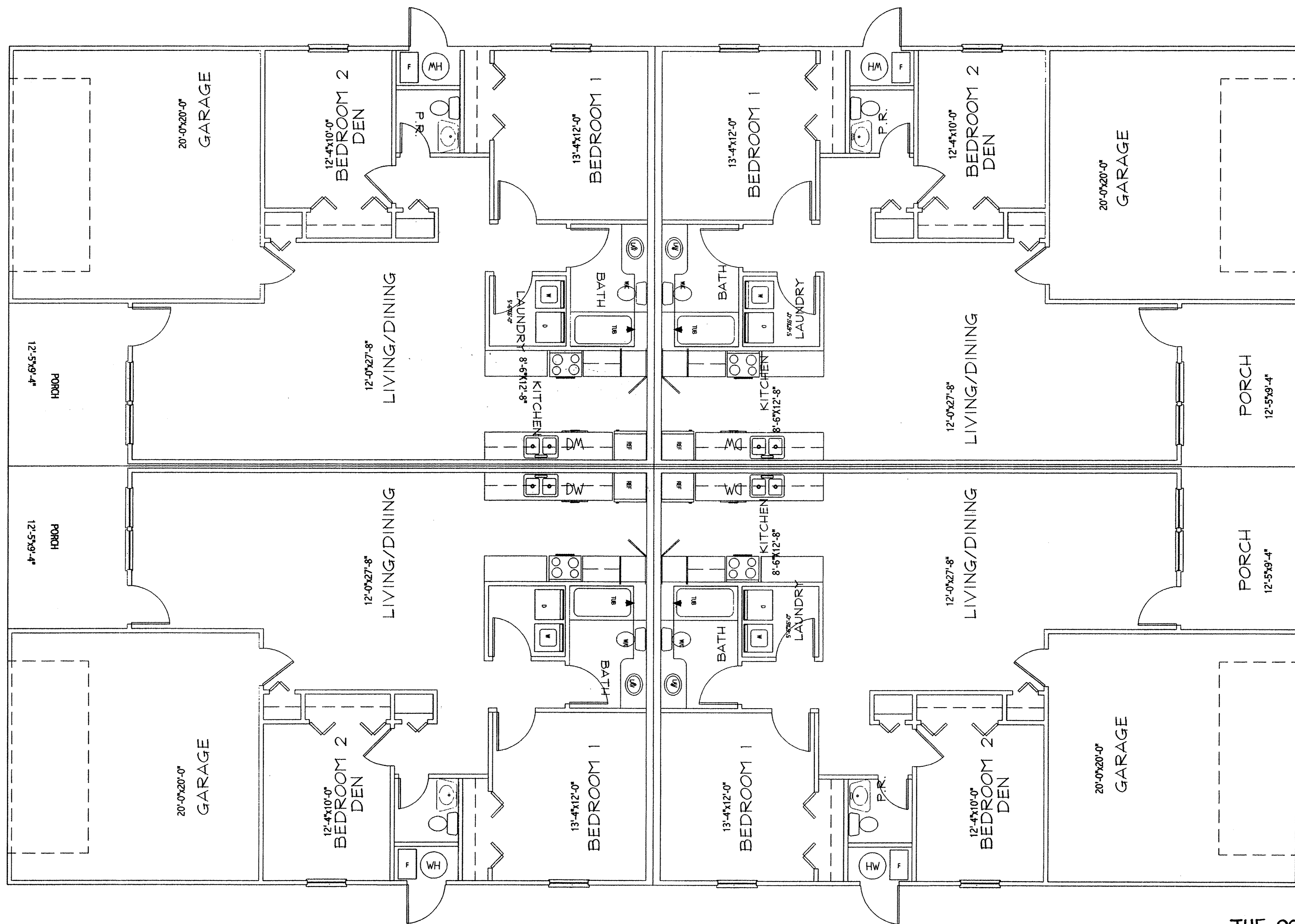

SIDE ELEVATION
 SCALE: 1/4"=1'-0"




FRONT ELEVATION
 SCALE: 1/4"=1'-0"



THE COTTAGES AT SAVANNAH
 CONDOMINIUM PHASE II
 UNITS 94-97



THE COTTAGES AT SAVANNAH
 CONDOMINIUM PHASE II
 UNITS 94-97

FLOOR PLAN

SCALE: 1/4"=1'-0"

