

MEADOW LAKES SUBDIVISION No. 2

PART OF ORIGINAL RIDGEVILLE TOWNSHIP LOT NUMBERS 31, 42, 43, & RESUBDIVISION OF PART OF BLOCK E IN MEADOW LAKES SUBDIVISION NO. 1, P.V. 68 PG. 35-40 & BLOCKS H & J IN MEADOW LAKES SUBDIVISION NO. 1 AUDITOR'S REVISED, PV. 69 PG. 53-54
CITY OF NORTH RIDGEVILLE, COUNTY OF LORAIN, STATE OF OHIO

OWNER'S CERTIFICATE

SITUATED IN RIDGEVILLE TOWNSHIP, COUNTY OF LORAIN, STATE OF OHIO, AND BEING PART OF ORIGINAL RIDGEVILLE TOWNSHIP LOT NUMBERS 42, 43, CONTAINING 108.6805 ACRES.

THE UNDERSIGNED, ALL PURPOSE CONSTRUCTION CO. HEREBY CERTIFIES THE ATTACHED PLAT CORRECTLY REPRESENTS ITS "MEADOW LAKE SUBDIVISION NO. 2" A SUBDIVISION OF LOTS 200 TO 449 INCLUSIVE. DOES HEREBY ACKNOWLEDGE THIS PLAT OF SAME AND DEDICATES TO USE AS SUCH, ALL OR PART OF THE ROADS, BOULEVARDS, CUL-DE-SACS, PARKS, PLANTING STRIPS, ETCETERA SHOWN HEREIN AND NOT HERETOFORE DEDICATED.

THE UNDERSIGNED FURTHER AGREES THAT ANY USE OR IMPROVEMENTS MADE ON THIS LAND SHALL BE IN CONFORMITY WITH ALL EXISTING PLATTING, HEALTH OR OTHER LAWFUL RULES AND REGULATIONS INCLUDING THE APPLICABLE OFF-STREET PARKING AND LOADING REQUIREMENTS OF THE CITY OF NORTH RIDGEVILLE, OHIO, FOR THE BENEFIT OF THEMSELVES AND ALL OTHER SUBSEQUENT PARTIES TAKING TITLE FROM, UNDER OR THROUGH THE UNDERSIGNED.

THE DIMENSIONS OF THE LOTS AND STREET ARE SHOWN ON THE PLAT IN FEET AND DECIMAL PARTS THEREOF. EASEMENTS ARE RESERVED WHERE INDICATED ON THE PLAT FOR PUBLIC UTILITY PURPOSES ABOVE OR BENEATH THE GROUND.

IN WITNESS THEREOF THE UNDERSIGNED HAVE HEREUNTO SET THEIR HAND THIS 10th DAY OF JULY, 2002.

ALL PURPOSE CONSTRUCTION CO.

Frank Deltore
PRESIDENT

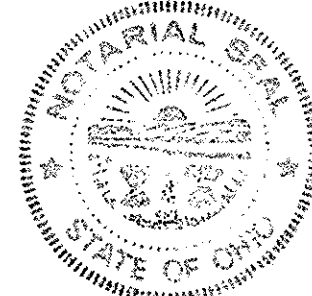
Christopher G. Teater
WITNESS

Ed Masters
WITNESS

NOTARY PUBLIC

STATE OF OHIO
LORAIN COUNTY

BEFORE ME, A NOTARY PUBLIC, IN AND FOR SAID COUNTY AND STATE DID PERSONALLY APPEAR THE ABOVE SIGNED OFFICER OF ALL PURPOSE CONSTRUCTION CO., WHO ACKNOWLEDGED THE SIGNING OF THIS PLAT TO BE HIS VOLUNTARY ACT AND DEED FOR THE PURPOSES THEREIN EXPRESSED. IN WITNESS THEREOF I HAVE HEREUNTO SET MY HAND AND OFFICIAL SEAL THIS 10th DAY OF JULY, 2002.



Christopher G. Teater
NOTARY PUBLIC

MY COMMISSION EXPIRES: _____

MORTGAGEE'S CERTIFICATE

THIS IS TO CERTIFY THAT THE UNDERSIGNED OFFICERS OF CHARTER ONE BANK N.A. MORTGAGEE OF LANDS EMBRACED WITHIN THIS PLAT OF MEADOW LAKES SUBDIVISION NO. 2 HEREBY ACCEPT THE SAME TO BE CORRECT AND DEDICATE TO PUBLIC USE OF STREETS AND EASEMENTS AS SHOWN HEREON

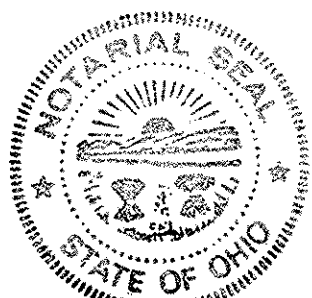
Charter One Bank N.A.
MORTGAGEE

BY: [Signature]
TITLE: VICE PRESIDENT

NOTARY PUBLIC

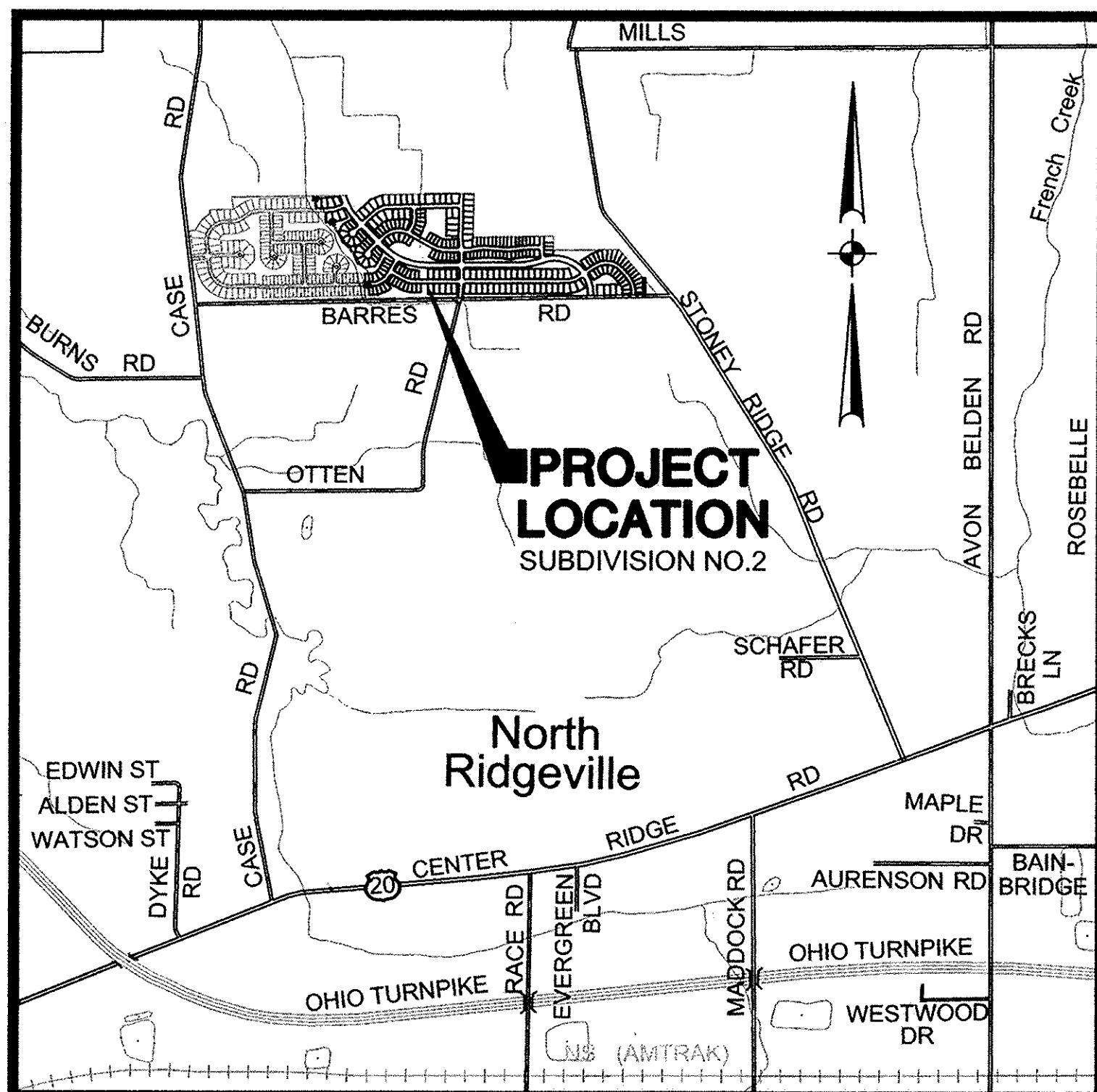
STATE OF OHIO
LORAIN COUNTY

BEFORE ME, A NOTARY PUBLIC, IN AND FOR SAID COUNTY AND STATE DID PERSONALLY APPEAR THE ABOVE SIGNED OFFICERS OF THE MORTGAGEE, WHO ACKNOWLEDGED THE SIGNING OF THIS PLAT TO BE THEIR VOLUNTARY ACT AND DEED FOR THE PURPOSES THEREIN EXPRESSED. IN WITNESS THEREOF I HAVE HEREUNTO SET MY HAND AND OFFICIAL SEAL THIS 10th DAY OF JULY, 2002.



Christopher G. Teater
NOTARY PUBLIC

MY COMMISSION EXPIRES: _____



VICINITY MAP SCALE: 1"=2000'

SURVEYOR'S CERTIFICATE

THIS IS TO CERTIFY THAT AT THE REQUEST OF THE OWNERS I HAVE SURVEYED AND PLATTED MEADOW LAKES SUBDIVISION NO. 2 AS SHOWN HEREON, EMBRACING 108.6805 ACRES OF LAND IN RIDGEVILLE TOWNSHIP ORIGINAL LOT NUMBERS 42, 43, CITY OF NORTH RIDGEVILLE, COUNTY OF LORAIN, AND STATE OF OHIO OF WHICH 26.5891 ACRES LIE IN PUBLIC STREET DEDICATION, AND 57.8721 ACRES LIE IN LOTS NUMBERED 200 TO 449, INCLUSIVE, AND 24.2193 ACRES LIE IN BLOCKS.

IRON PIPES WERE FOUND AT ALL POINTS INDICATED THUSLY \odot , AND IRON PIPES WERE SET AT ALL POINTS INDICATED AS \circ . DISTANCES ARE GIVEN IN FEET AND DECIMAL PARTS THEREOF. BEARINGS ARE BASED ON AN ASSUMED MERIDIAN AND ARE GIVEN FOR THE PURPOSE OF DESCRIBING ANGLES ONLY. DIMENSION ON CURVES ARE ARC MEASUREMENTS. THE PLAT REPRESENTS A SURVEY IN WHICH THE TRAVERSE OF THE EXTERIOR BOUNDARIES OF THE TRACT AND OF EACH BLOCK WHEN COMPUTED FROM FIELD MEASUREMENTS OF THE GROUND THOUSAND FEET OF THE PERIMETER CLOSED WITHIN A LIMIT OF ERROR OF ONE FOOT IN TEN THOUSAND BEFORE BALANCING THE SURVEY. ALL OF WHICH I CERTIFY TO BE CORRECT TO THE BEST OF MY PROFESSIONAL KNOWLEDGE AND BELIEF.

David L. Elwell
DAVID L. ELWELL, REGISTERED SURVEYOR NO. 6333



AREA TABULATION:					
AREA IN LOTS	57.8721	AC.	83.3195	AC.	
AREA IN BLOCKS	24.2193	AC.	5.1251	AC.	
AREA IN STREETS	26.5891	AC.	20.2339	AC.	
TOTAL AREA	108.6805	AC.	108.6805	AC.	

LEGEND

- \odot INDICATES IRON PIN FOUND
- \circ INDICATES IRON PIN SET
- \boxtimes INDICATES MONUMENT FOUND
- \boxplus INDICATES MONUMENT SET

BLOCKS (OPEN SPACE)

BLOCK	AC.	BLOCK	AC.
III	0.1833	S	2.5203
K	0.2014	T	2.0804
L	0.5268	U	2.2194
M	0.2114	V	3.0668
P	3.4634	X	1.4472
Q	0.6979	Y	1.4543
R	1.0859	Z	0.9422
TOTAL AC.		20.1007	

BLOCKS (NOT IN OPEN SPACE)

BLOCK	AC.	BLOCK	AC.	BLOCK	AC.	BLOCK	AC.	BLOCK	AC.	BLOCK	AC.
AA	0.0833	DDD	0.0616	HH	0.0484	N	0.2634	SS	0.0448	YY	0.0451
AAA	0.0977	EE	0.0519	HHH	0.3956	NN	0.0448	TT	0.1862	ZZ	0.1181
BB	0.1209	EEE	0.1149	II	0.0523	O	0.1603	UU	0.0718		
BBB	0.0522	FF	0.2455	JJ	0.2352	OO	0.0448	VV	0.0448		
CC	0.0520	FFF	0.1646	KK	0.0448	PP	0.1175	WW	0.2076		
CCC	0.0968	GG	0.0520	LL	0.0528	QQ	0.2955	WW	0.0448		
DD	0.0665	GGG	0.1717	MM	0.0716	RR	0.0448	XX	0.0520		
TOTAL AC.		4.1186									

ALLTEL UTILITY EASEMENT

ALL PURPOSE CONSTRUCTION CO., THE OWNER OF THE WITHIN PLATTED LAND DOES HEREBY GRANT UNTO THE ALLTEL CORPORATION AND THEIR SUCCESSORS AND ASSIGNS, (HEREINAFTER REFERRED TO AS THE GRANTEE), A PERMANENT RIGHT OF WAY EASEMENT AS SHOWN HEREIN AND DENOTED "EASEMENT A", TO CONSTRUCT, PLACE, OPERATE, MAINTAIN, REPAIR, RECONSTRUCT AND RELOCATE SUCH UNDERGROUND COMMUNICATION, CABLES, DUCTS, CONDUITS, SURFACE OR BELOW GROUND, MOUNTED TRANSFORMERS, PEDESTALS, CONCRETE PADS AND OTHER FACILITIES AS ARE NECESSARY AND CONVENIENT FOR THE GRANTEE TO DISTRIBUTE AND TRANSMIT COMMUNICATIONS SIGNALS FOR PUBLIC AND PRIVATE USE AT SUCH LOCATIONS AS GRANTEE MAY DETERMINE UPON, WITHIN AND ACROSS THE EASEMENT PREMISES. SAID EASEMENT SHALL INCLUDE THE RIGHT TO INSTALL, MAINTAIN, REPAIR AND AUGMENT COMMUNICATIONS FACILITIES OUTSIDE THE ABOVE DESCRIBED PREMISES AND SHALL ALSO INCLUDE THE RIGHT OF ACCESS, INGRESS AND EGRESS TO AND FROM ANY OF THE WITHIN DESCRIBED PREMISES FOR THE PURPOSE OF EXERCISING ANY OF THE EASEMENT RIGHTS INDICATED HEREIN. GRANTEE SHALL AT THEIR EXPENSE RESTORE THE LAND TO ITS CONDITION AS IT EXISTED IMMEDIATELY PRIOR TO THE WORK PERFORMED BY GRANTEE, EXCEPT GRANTEE SHALL NOT BE RESPONSIBLE FOR REPLACING OR REPAIRING ANY PERMANENT STRUCTURES, TREES OR SHRUBS WHICH ARE LOCATED WITHIN THE EASEMENT BOUNDARIES AND ARE DAMAGED OR REMOVED AS A RESULT OF WORK PERFORMED AS PROVIDED FOR HEREIN BY GRANTEE. THE SUBLOTS SHALL BE RESTRICTED TO UNDERGROUND UTILITY SERVICE.

BY: Frank Deltore
ALL PURPOSE CONSTRUCTION CO.
37000 Center Ridge Road
North Ridgeville, Ohio
(440) 327-5366

PLANNING COMMISSION

APPROVED THIS 8th DAY OF JULY, 2002.

Ray M. Dawson
SECRETARY (OR RESPONSIBLE OFFICIAL) CITY PLANNING COMMISSION
DATE: 7-8-02

CITY COUNCIL

APPROVED THIS 8th DAY OF JULY, 2002.

Glenn E. White
MAYOR (OR DESIGNATED MEMBER OF COUNCIL)
DATE: 7/8/02

CITY ENGINEER

APPROVED THIS 8th DAY OF JULY, 2002.

Thomas E. Bente
CITY ENGINEER
DATE: 7-08-02

COUNTY AUDITOR

TRANSFERRED THIS _____ DAY OF _____, _____

LORAIN COUNTY AUDITOR DATE

COUNTY RECORDER

FILED FOR RECORD THIS DAY _____ AT _____ M. RECORDED THIS _____ DAY OF _____ IN PLAT BOOK _____ PAGE NO. _____

LORAIN COUNTY RECORDER DATE

NO TRANSFER NECESSARY
MARK R. STEWART
LORAIN COUNTY AUDITOR

10-25-2002

OCT 25 2002
RECEIVED FOR RECORD
at 2:44 clock P.M. in PLAT RECORD
VOL. 73 MARY ANN JAMISON
PAGE 52 Lorain County Recorder

56 inc \$306.40 ea
Box etc 2 married
Lana

864714

DESCRIPTION

DATE

REVISIONS

DATE: 6-28-01
DRAWN BY: CJC
CHKD BY:
DWG. NAME: 2-PLATES
PATH: 01188/ADD/CONTROL
F.B.:

KS ASSOCIATES, INC.
840 East River Street, Suite 100
Columbus, Ohio 43086
Phone (614) 365-4730
Fax (614) 365-4790
mailroom@ksassoc.com
www.ksassoc.com

KS ASSOCIATES

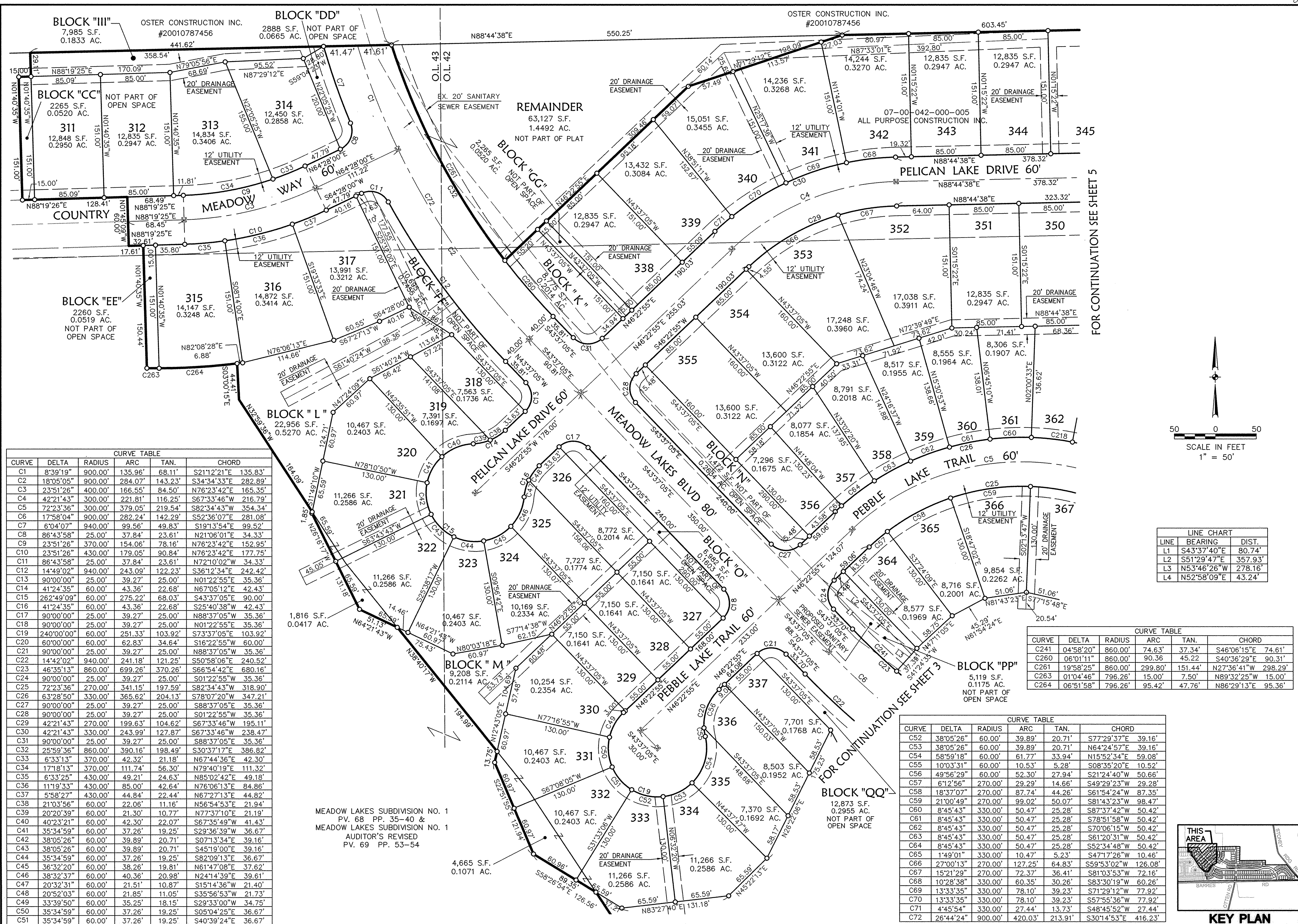
RECORD PLAT - TITLE SHEET

MEADOW LAKES SUBDIVISION NO. 2

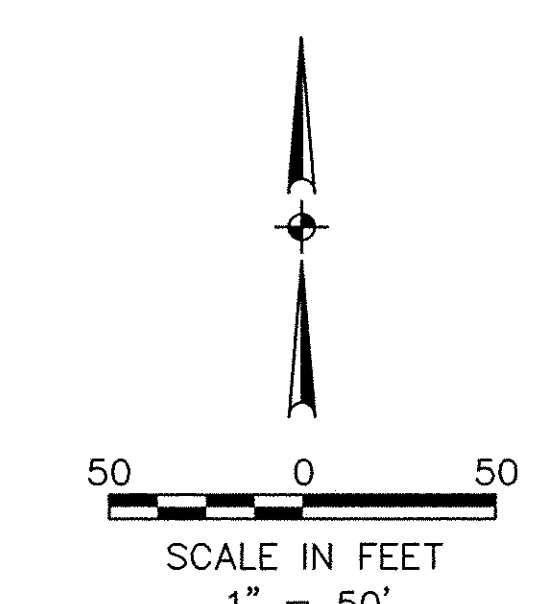
CITY OF NORTH RIDGEVILLE
COUNTY OF LORAIN, STATE OF OHIO

SHEET 1 OF 7

JOB NO. 01169



FOR CONTINUATION SEE SHEET 5

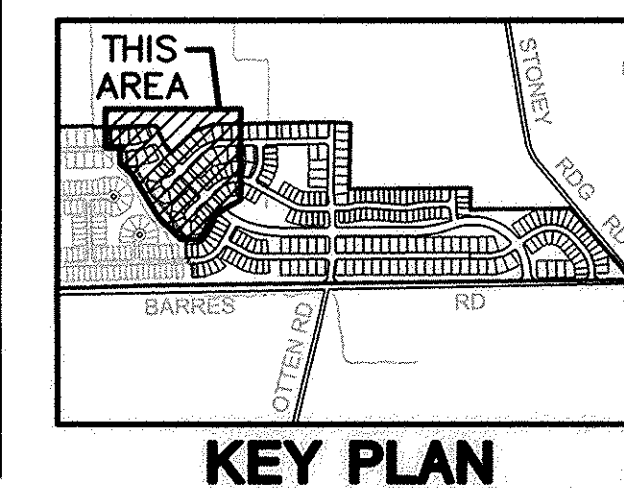


LINE	BEARING	DIST.
L1	S43°37'40"E	80.74'
L2	S51°29'47"E	357.93'
L3	N53°46'26"W	278.16'
L4	N52°58'09"E	43.24'

CURVE	DELTA	RADIUS	ARC	TAN.	CHORD
C1	8°39'19"	900.00'	135.96'	68.11'	S21°12'21"E 135.83'
C2	18°05'05"	900.00'	284.07'	143.23'	S34°34'33"E 282.89'
C3	23°51'26"	400.00'	166.55'	84.50'	N76°23'42"E 165.35'
C4	42°21'43"	300.00'	221.81'	116.25'	S67°33'46"W 216.79'
C5	72°23'36"	300.00'	379.05'	219.54'	S82°34'43"W 354.34'
C6	17°58'04"	900.00'	282.24'	142.29'	S52°36'07"E 281.08'
C7	6°04'07"	940.00'	99.56'	49.83'	S19°13'54"E 99.52'
C8	86°43'58"	25.00'	37.84'	23.61'	N21°06'01"E 34.33'
C9	23°51'26"	370.00'	154.06'	78.16'	N76°23'42"E 152.95'
C10	23°51'26"	430.00'	179.05'	90.84'	N76°23'42"E 177.75'
C11	86°43'58"	25.00'	37.84'	23.61'	N72°10'02"W 34.33'
C12	14°49'02"	940.00'	243.09'	122.23'	S36°12'34"E 242.42'
C13	90°00'00"	25.00'	39.27'	25.00'	N01°22'55"E 35.36'
C14	41°24'35"	60.00'	43.36'	22.68'	N67°05'12"E 42.43'
C15	262°49'09"	60.00'	275.22'	68.03'	S43°37'05"E 90.00'
C16	41°24'35"	60.00'	43.36'	22.68'	S25°40'38"W 42.43'
C17	90°00'00"	25.00'	39.27'	25.00'	N88°37'05"W 35.36'
C18	90°00'00"	25.00'	39.27'	25.00'	N01°22'55"E 35.36'
C19	240°00'00"	60.00'	251.33'	103.92'	S73°37'05"E 103.92'
C20	60°00'00"	60.00'	62.83'	34.64'	S16°22'55"W 60.00'
C21	90°00'00"	25.00'	39.27'	25.00'	N88°37'05"W 35.36'
C22	14°42'02"	940.00'	241.18'	121.25'	S50°58'06"E 240.52'
C23	46°35'13"	860.00'	699.26'	370.26'	S66°54'42"E 680.16'
C24	90°00'00"	25.00'	39.27'	25.00'	S01°22'55"W 35.36'
C25	72°23'36"	270.00'	341.15'	197.59'	S82°34'43"W 318.90'
C26	63°28'50"	330.00'	365.62'	204.13'	S78°07'20"W 347.21'
C27	90°00'00"	25.00'	39.27'	25.00'	S88°37'05"E 35.36'
C28	90°00'00"	25.00'	39.27'	25.00'	S01°22'55"W 35.36'
C29	42°21'43"	270.00'	199.63'	104.62'	S67°33'46"W 195.11'
C30	42°21'43"	330.00'	243.99'	127.87'	S67°33'46"W 238.47'
C31	90°00'00"	25.00'	39.27'	25.00'	S88°37'05"E 35.36'
C32	25°59'36"	860.00'	390.16'	198.49'	S30°37'17"E 386.82'
C33	6°33'13"	370.00'	42.32'	21.18'	N67°44'36"E 42.30'
C34	17°18'13"	370.00'	111.74'	56.30'	N79°40'19"E 111.32'
C35	6°33'25"	430.00'	49.21'	24.63'	N85°02'42"E 49.18'
C36	11°19'33"	430.00'	85.00'	42.64'	N76°06'13"E 84.86'
C37	5°58'27"	430.00'	44.84'	22.44'	N67°27'13"E 44.82'
C38	21°03'56"	60.00'	22.06'	11.16'	N56°54'53"E 21.94'
C39	20°20'39"	60.00'	21.30'	10.77'	N77°37'10"E 21.19'
C40	40°23'21"	60.00'	42.30'	22.07'	S67°33'49"W 41.43'
C41	35°34'59"	60.00'	37.26'	19.25'	S29°36'39"W 36.67'
C42	38°05'26"	60.00'	39.89'	20.71'	S07°13'34"E 39.16'
C43	38°05'26"	60.00'	39.89'	20.71'	S45°19'00"E 39.16'
C44	35°34'59"	60.00'	37.26'	19.25'	S82°09'13"E 36.67'
C45	36°32'20"	60.00'	38.26'	19.81'	N61°47'08"E 37.62'
C46	38°32'37"	60.00'	40.36'	20.98'	N24°14'39"E 39.61'
C47	20°32'31"	60.00'	21.51'	10.87'	S15°14'36"W 21.40'
C48	20°52'03"	60.00'	21.85'	11.05'	S35°56'53"W 21.73'
C49	33°39'50"	60.00'	35.25'	18.15'	S29°33'00"W 34.75'
C50	35°34'59"	60.00'	37.26'	19.25'	S05°04'25"E 36.67'
C51	35°34'59"	60.00'	37.26'	19.25'	S40°39'24"E 36.67'

CURVE	DELTA	RADIUS	ARC	TAN.	CHORD
C241	04°58'20"	860.00'	74.63'	37.34'	S46°06'15"E 74.61'
C260	06°01'11"	860.00'	90.36'	45.22'	S40°36'29"E 90.31'
C261	19°58'25"	860.00'	299.80'	151.44'	N27°36'41"W 298.29'
C263	01°04'46"	796.26'	15.00'	7.50'	N89°32'25"W 15.00'
C264	06°51'58"	796.26'	95.42'	47.76'	N86°29'13"E 95.36'

CURVE	DELTA	RADIUS	ARC	TAN.	CHORD
C52	38°05'26"	60.00'	39.89'	20.71'	S77°29'37"E 39.16'
C53	38°05'26"	60.00'	39.89'	20.71'	N64°24'57"E 39.16'
C54	58°59'18"	60.00'	61.77'	33.94'	N15°52'34"E 59.08'
C55	10°03'31"	60.00'	10.53'	5.28'	S08°35'20"E 10.52'
C56	49°56'29"	60.00'	52.30'	27.94'	S21°24'40"W 50.66'
C57	6°12'56"	270.00'	29.29'	14.66'	S49°29'23"W 29.28'
C58	18°37'07"	270.00'	87.74'	44.26'	S61°54'24"W 87.35'
C59	21°00'49"	270.00'	99.02'	50.07'	S81°43'23"W 98.47'
C60	8°45'43"	330.00'	50.47'	25.28'	S87°37'42"W 50.42'
C61	8°45'43"	330.00'	50.47'	25.28'	S78°51'58"W 50.42'
C62	8°45'43"	330.00'	50.47'	25.28'	S70°06'15"W 50.42'
C63	8°45'43"	330.00'	50.47'	25.28'	S61°20'31"W 50.42'
C64	8°45'43"	330.00'	50.47'	25.28'	S52°34'48"W 50.42'
C65	1°49'01"	330.00'	10.47'	5.23'	S47°17'26"W 10.46'
C66	27°00'13"	270.00'	127.25'	64.83'	S59°53'02"W 126.08'
C67	15°21'29"	270.00'	72.37'	36.41'	S81°03'53"W 72.16'
C68	10°28'38"	330.00'	60.35'	30.26'	S83°30'19"W 60.26'
C69	13°33'35"	330.00'	78.10'	39.23'	S71°29'12"W 77.92'
C70	13°33'35"	330.00'	78.10'	39.23'	S57°55'36"W 77.92'
C71	4°45'54"	330.00'	27.44'	13.73'	S48°45'52"W 27.44'
C72	26°44'24"	900.00'	420.03'	213.91'	S30°14'53"E 416.23'



RECORD PLAT

MEADOW LAKES SUBDIVISION NO. 2

CITY OF NORTH RIDGEVILLE
COUNTY OF LORAIN, STATE OF OHIO

DATE: 6-14-01
DRAWN BY: CCC
CHKD BY:
DWC. NAME: Z-BLADT
PATH: 01889.ADDT/CONTROL

DESCRIPTION

REVISIONS

DATE

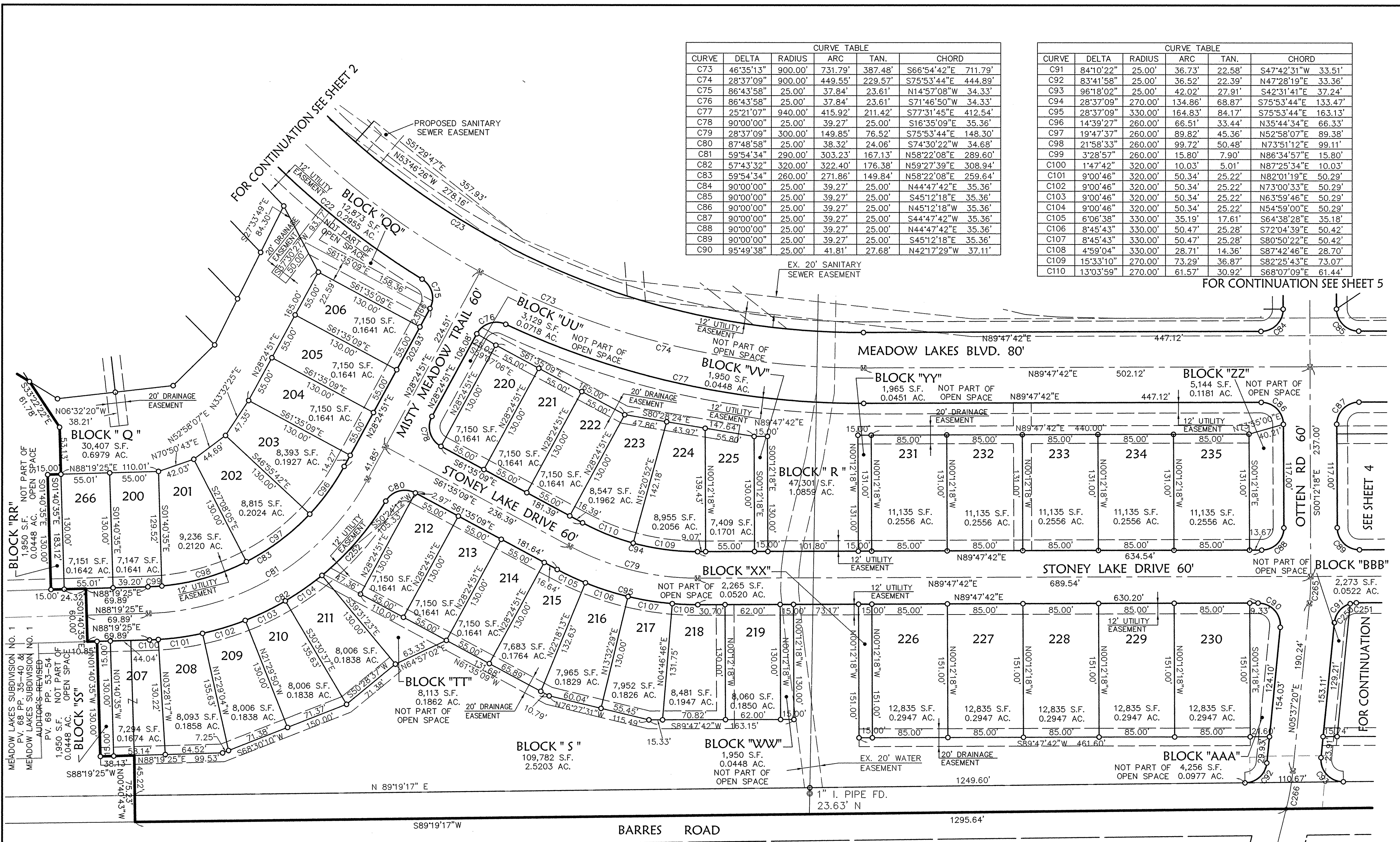
BY

SHEET 2 OF 7

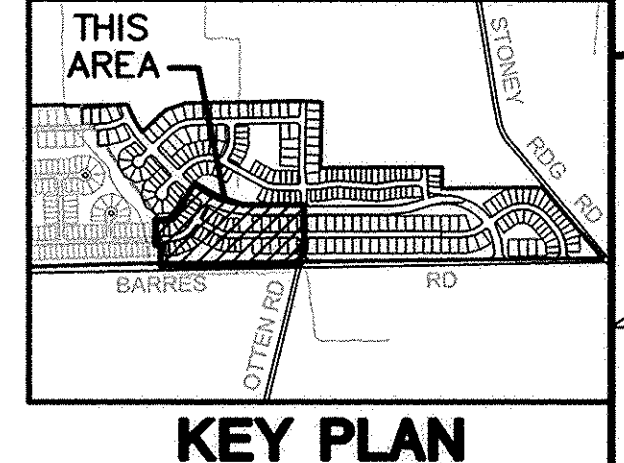
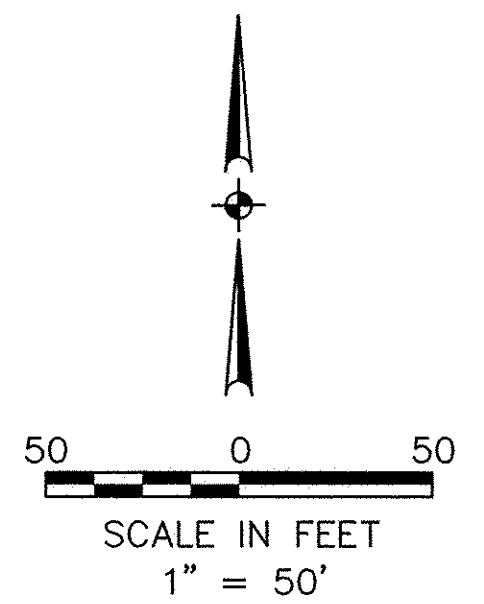
JOB NO. 01169

CURVE TABLE					
CURVE	DELTA	RADIUS	ARC	TAN.	CHORD
C73	46°35'13"	900.00'	731.79'	387.48'	S66°54'42"E 711.79'
C74	28°37'09"	900.00'	449.55'	229.57'	S75°53'44"E 444.89'
C75	86°43'58"	25.00'	37.84'	23.61'	N14°57'08"W 34.33'
C76	86°43'58"	25.00'	37.84'	23.61'	S71°46'50"W 34.33'
C77	25°21'07"	940.00'	415.92'	211.42'	S77°31'45"E 412.54'
C78	90°00'00"	25.00'	39.27'	25.00'	S16°35'09"E 35.36'
C79	28°37'09"	300.00'	149.85'	76.52'	S75°53'44"E 148.30'
C80	87°48'58"	25.00'	38.32'	24.06'	S74°30'22"W 34.68'
C81	59°54'34"	290.00'	303.23'	167.13'	N58°22'08"E 289.60'
C82	57°43'32"	320.00'	322.40'	176.38'	N59°27'39"E 308.94'
C83	59°54'34"	260.00'	271.86'	149.84'	N58°22'08"E 259.64'
C84	90°00'00"	25.00'	39.27'	25.00'	N44°47'42"E 35.36'
C85	90°00'00"	25.00'	39.27'	25.00'	S45°12'18"E 35.36'
C86	90°00'00"	25.00'	39.27'	25.00'	N45°12'18"W 35.36'
C87	90°00'00"	25.00'	39.27'	25.00'	S44°47'42"W 35.36'
C88	90°00'00"	25.00'	39.27'	25.00'	N44°47'42"E 35.36'
C89	90°00'00"	25.00'	39.27'	25.00'	S45°12'18"E 35.36'
C90	95°49'38"	25.00'	41.81'	27.68'	N42°17'29"W 37.11'

CURVE TABLE					
CURVE	DELTA	RADIUS	ARC	TAN.	CHORD
C91	84°10'22"	25.00'	36.73'	22.58'	S47°42'31"W 33.51'
C92	83°41'58"	25.00'	36.52'	22.39'	N47°28'19"E 33.36'
C93	96°18'02"	25.00'	42.02'	27.91'	S42°31'41"E 37.24'
C94	28°37'09"	270.00'	134.86'	68.87'	S75°53'44"E 133.47'
C95	28°37'09"	330.00'	164.83'	84.17'	S75°53'44"E 163.13'
C96	14°39'27"	260.00'	66.51'	33.44'	N35°44'34"E 66.33'
C97	19°47'37"	260.00'	89.82'	45.36'	N52°58'07"E 89.38'
C98	21°58'33"	260.00'	99.72'	50.48'	N73°51'12"E 99.11'
C99	3°28'57"	260.00'	15.80'	7.90'	N86°34'57"E 15.80'
C100	1°47'42"	320.00'	10.03'	5.01'	N87°25'34"E 10.03'
C101	9°00'46"	320.00'	50.34'	25.22'	N82°01'19"E 50.29'
C102	9°00'46"	320.00'	50.34'	25.22'	N73°00'33"E 50.29'
C103	9°00'46"	320.00'	50.34'	25.22'	N63°59'46"E 50.29'
C104	9°00'46"	320.00'	50.34'	25.22'	N54°59'00"E 50.29'
C105	6°06'38"	330.00'	35.19'	17.61'	S64°38'28"E 35.18'
C106	8°45'43"	330.00'	50.47'	25.28'	S72°04'39"E 50.42'
C107	8°45'43"	330.00'	50.47'	25.28'	S80°50'22"E 50.42'
C108	4°59'04"	330.00'	28.71'	14.36'	S87°42'46"E 28.70'
C109	15°33'10"	270.00'	73.29'	36.87'	S82°25'43"E 73.07'
C110	13°03'59"	270.00'	61.57'	30.92'	S68°07'09"E 61.44'



CURVE TABLE					
CURVE	DELTA	RADIUS	ARC	TAN.	CHORD
C250	68°03'15"	25.00'	29.69'	16.88'	S39°38'57"W 27.98'
C251	16°07'07"	25.00'	7.03'	3.54'	N81°44'08"E 7.01'
C252	19°52'44"	320.00'	111.02'	56.08'	N40°32'15"E 110.47'
C265	5°49'38"	300.00'	30.51'	15.27'	N02°42'31"E 30.50'
C266	8°22'28"	300.00'	43.85'	21.96'	N09°48'34"E 43.81'



RECORD PLAT

MEADOW LAKES SUBDIVISION NO. 2

CITY OF NORTH RIDGEVILLE
COUNTY OF LORAIN, STATE OF OHIO

DATE: 6-14-01
DRAWN BY: GEC
CHKD BY: Z-ELADZ
DWG. NAME: 2-ELADZ
PATH: 01169.ADR/CONTROL
F.B.

DESCRIPTION

REVISIONS

DATE

BY

SHEET 3 OF 7

JOB NO. 01169

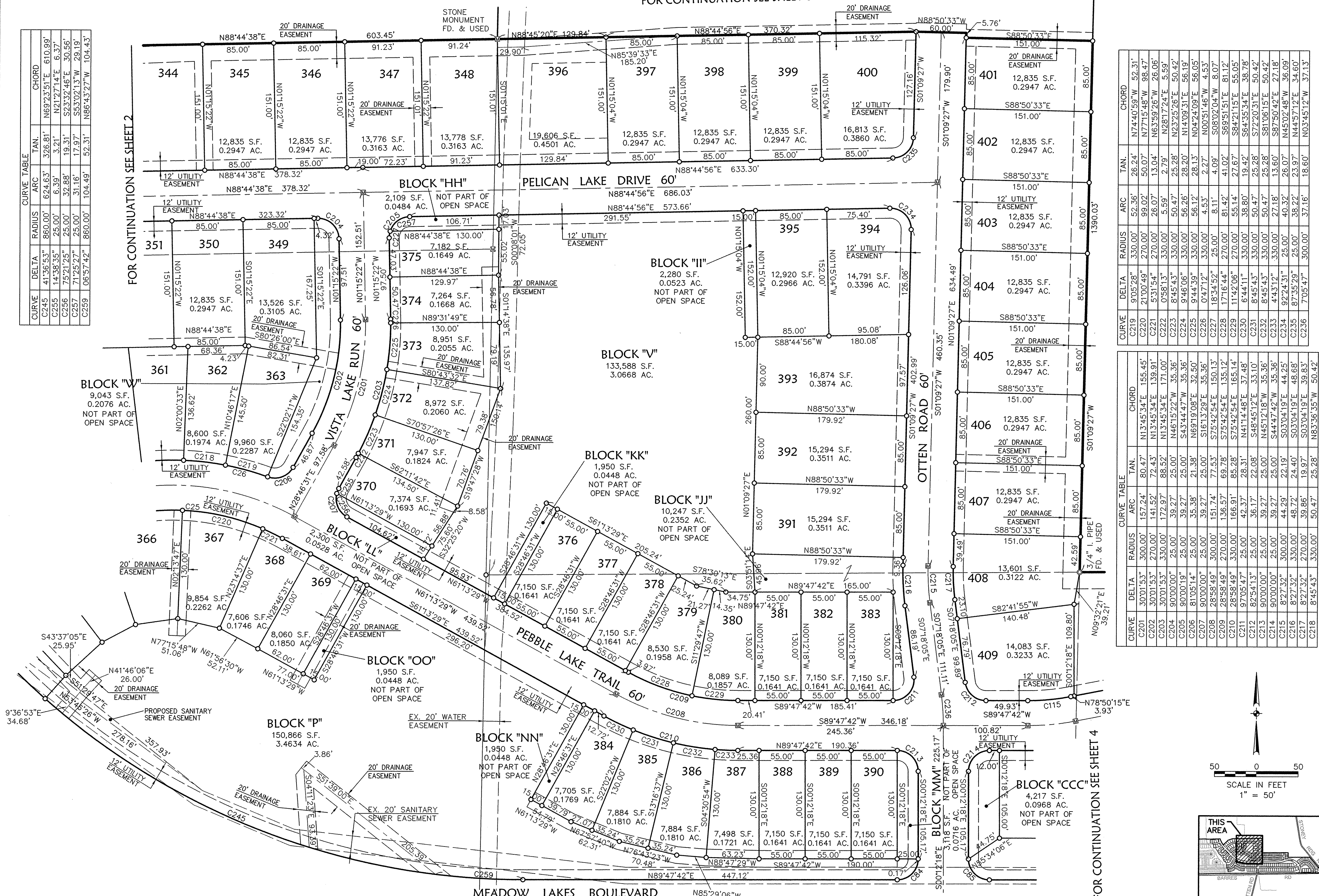
KS ASSOCIATES, INC.

960 Bures Road, Suite 100
P.O. Box 599
Elroy, Ohio 44026
Phone (440) 365-4730
Fax (440) 365-4790
mailroom@ksassoc.com
www.ksassoc.com

FOR CONTINUATION SEE SHEET 6

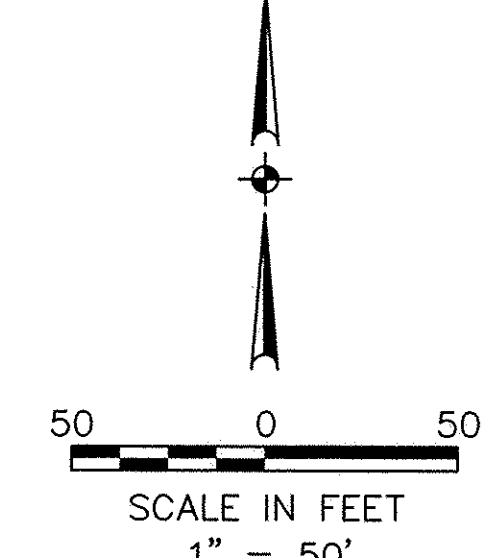
CURVE	DELTA	RADIUS	ARC	TAN.	CHORD
C245	41°36'53"	860.00'	624.63'	326.81'	N69°23'51"E 610.99'
C255	14°38'35"	25.00'	6.39'	3.21'	N21°27'14"E 6.37'
C256	75°21'25"	25.00'	32.88'	19.31'	S23°32'46"E 30.56'
C257	71°25'27"	25.00'	31.16'	17.97'	S53°02'13"W 29.19'
C259	06°57'42"	860.00'	104.49'	52.31'	N86°43'27"W 104.43'

FOR CONTINUATION SEE SHEET 2



CURVE	DELTA	RADIUS	ARC	TAN.	CHORD
C219	9°05'28"	330.00'	52.36'	26.24'	N74°40'59"W 52.31'
C220	21°00'49"	270.00'	99.02'	50.07'	N77°15'48"W 98.47'
C221	5°31'54"	270.00'	26.07'	13.04'	N63°59'26"W 26.06'
C222	0°58'13"	330.00'	5.59'	2.79'	N28°17'24"E 5.59'
C223	8°45'43"	330.00'	50.47'	25.28'	N23°25'26"E 50.42'
C224	9°46'06"	330.00'	56.26'	28.20'	N14°09'31"E 56.19'
C225	9°44'39"	330.00'	56.12'	28.13'	N04°24'09"E 56.05'
C226	0°47'12"	330.00'	4.53'	2.27'	N00°51'46"W 4.53'
C227	18°34'52"	250.00'	8.11'	4.09'	S08°02'04"W 8.07'
C228	11°42'06"	270.00'	81.42'	41.02'	S89°51'51"E 81.12'
C229	17°16'44"	270.00'	55.14'	27.67'	S84°21'15"E 55.05'
C230	6°44'11"	330.00'	35.80'	19.42'	S64°35'34"E 38.78'
C231	8°45'43"	330.00'	50.47'	25.28'	S72°20'31"E 50.42'
C232	8°45'43"	330.00'	50.47'	25.28'	S81°06'15"E 50.42'
C233	4°43'12"	330.00'	27.18'	13.60'	S87°50'42"E 27.18'
C234	92°24'31"	25.00'	40.32'	26.07'	N45°02'48"W 36.09'
C235	87°35'29"	25.00'	38.22'	23.97'	N44°57'12"E 34.60'
C236	7°05'47"	300.00'	37.16'	18.60'	N03°45'12"W 37.13'

CURVE	DELTA	RADIUS	ARC	TAN.	CHORD
C201	30°01'53"	300.00'	157.24'	80.47'	N13°45'34"E 155.45'
C202	30°01'53"	270.00'	141.52'	72.43'	N13°45'34"E 139.91'
C203	30°01'53"	330.00'	172.97'	88.52'	N13°45'34"E 171.00'
C204	90°00'00"	25.00'	39.27'	25.00'	N46°15'22"W 35.36'
C205	90°00'00"	25.00'	39.27'	25.00'	S43°44'47"W 35.36'
C206	81°05'14"	25.00'	35.38'	21.38'	N69°19'08"E 32.50'
C207	90°00'00"	25.00'	39.27'	25.00'	S16°13'29"E 35.36'
C208	28°58'49"	300.00'	157.24'	80.47'	S75°42'54"E 150.13'
C209	28°58'49"	270.00'	136.57'	69.78'	S75°42'54"E 135.14'
C210	28°58'49"	330.00'	166.91'	85.28'	S75°42'54"E 165.14'
C211	97°05'47"	25.00'	42.37'	28.31'	N41°14'48"E 37.48'
C212	82°54'13"	25.00'	36.17'	22.08'	N48°45'12"E 33.10'
C213	90°00'00"	25.00'	39.27'	25.00'	N45°12'18"W 35.36'
C214	90°00'00"	25.00'	39.27'	25.00'	S44°47'42"W 35.36'
C215	8°27'32"	300.00'	44.29'	22.19'	S03°04'19"E 44.25'
C216	8°27'32"	330.00'	48.72'	24.40'	S03°04'19"E 48.68'
C217	8°27'32"	270.00'	39.86'	19.97'	S03°04'19"E 39.83'
C218	8°45'43"	330.00'	50.47'	25.28'	N83°36'35"W 50.42'



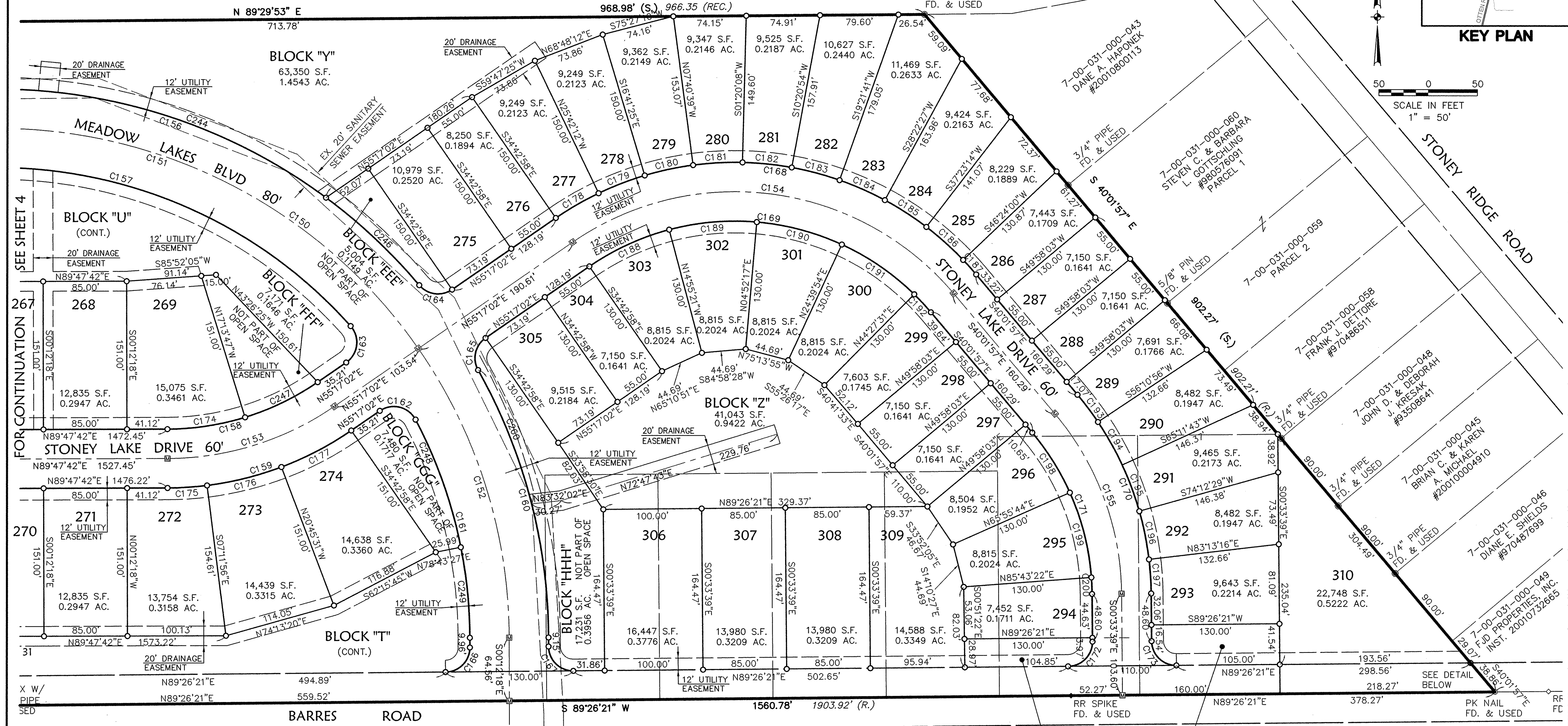
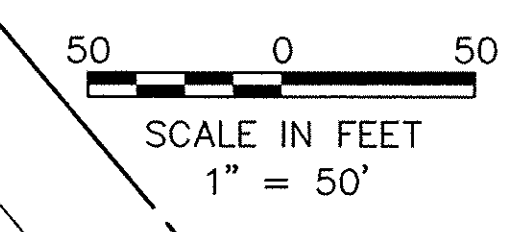
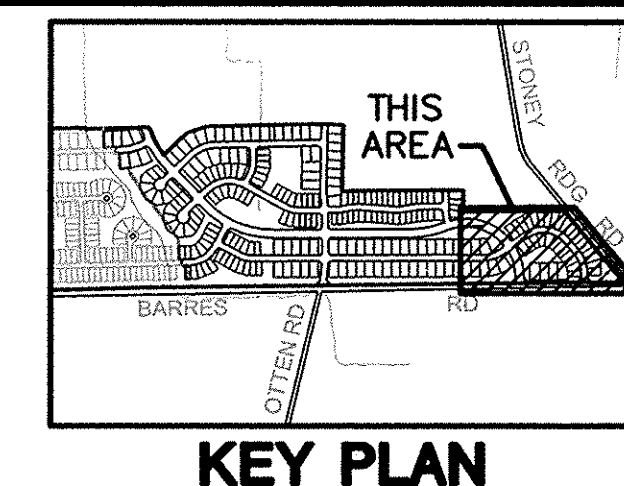
DATE	DESCRIPTION
8-14-01	BY
	DATE
	REVISIONS
	DATE
	DESCRIPTION

HS ASSOCIATES, INC.
 260 Burns Road, Suite 100
 Columbus, Ohio 43054
 Phone (440) 365-4720
 Fax (440) 365-4700
 email: info@hsassoc.com
 www.hsassoc.com

RECORD PLAT
MEADOW LAKES SUBDIVISION NO. 2
 CITY OF NORTH RIDGEVILLE
 COUNTY OF LORAIN, STATE OF OHIO

SHEET 5 OF 7
 JOB NO. 01169

7-00-031-000-021
NORBERT B. & MAURICE W. WENSINK
#990639266
("SECOND PARCEL")

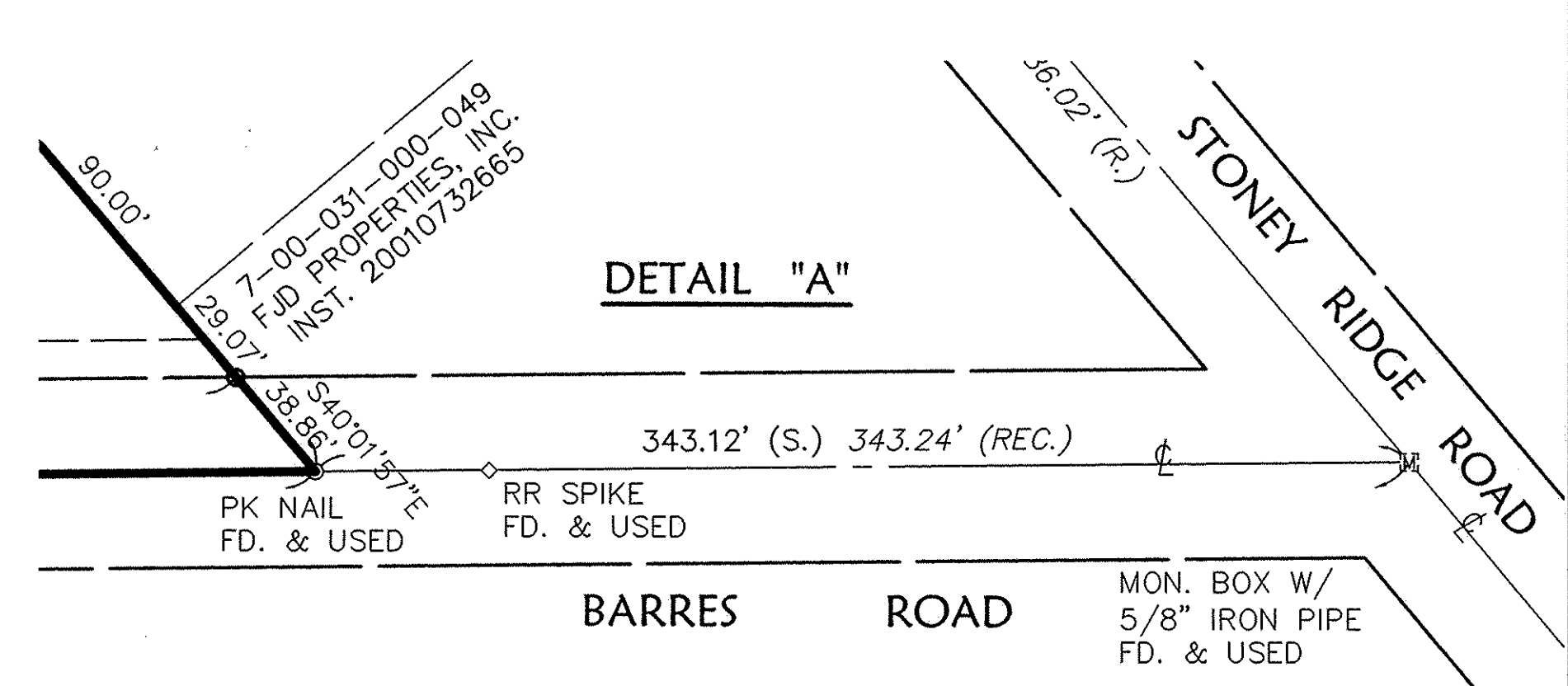


FOR CONTINUATION SEE SHEET 4
BLOCK "Y" 63,350 S.F. 1.4543 AC.
BLOCK "U" (CONT.)
BLOCK "FFF" 1,171 S.F. 0.1646 AC.
BLOCK "Z" 41,043 S.F. 0.9422 AC.
BLOCK "T" (CONT.)
BLOCK "HH" 17,331 S.F. 0.3966 AC.
BLOCK "AA" 3,630 S.F. 0.0833 AC. NOT PART OF OPEN SPACE
BLOCK "BB" 5,266 S.F. 0.1209 AC. NOT PART OF OPEN SPACE

CURVE	DELTA	RADIUS	ARC	TAN.	CHORD
C150	107°58'44"	521.00'	981.87'	716.82'	N54°11'40"W 842.88'
C151	73°28'04"	521.00'	668.05'	388.82'	N71°27'00"W 623.22'
C152	34°30'40"	521.00'	313.81'	161.83'	N17°27'38"W 309.09'
C153	34°30'40"	300.00'	180.70'	93.18'	N72°32'22"E 177.98'
C154	84°41'01"	290.00'	428.62'	264.27'	N82°22'28"W 390.66'
C155	39°28'18"	290.00'	199.78'	104.04'	N20°17'48"W 195.86'
C156	62°35'48"	561.00'	612.90'	341.07'	N71°24'00"W 582.87'
C157	66°32'24"	481.00'	558.61'	315.60'	N74°54'50"W 527.74'
C158	34°30'40"	270.00'	162.63'	83.87'	N72°32'22"E 160.18'
C159	34°30'40"	330.00'	198.77'	102.50'	N72°32'22"E 195.78'
C160	29°07'32"	561.00'	285.18'	145.74'	N14°46'04"W 282.12'
C161	27°35'01"	481.00'	231.56'	118.07'	N13°59'49"W 229.33'
C162	96°55'39"	25.00'	42.29'	28.22'	N76°15'09"W 37.43'
C163	96°55'39"	25.00'	42.29'	28.22'	N06°49'12"E 37.43'
C164	84°36'52"	25.00'	36.92'	22.75'	S82°24'32"E 33.66'
C165	84°36'52"	25.00'	36.92'	22.75'	S12°58'36"W 33.66'
C166	89°38'39"	25.00'	39.11'	24.85'	N44°37'01"E 35.25'
C167	90°21'21"	25.00'	39.43'	25.16'	S45°22'59"E 35.46'
C168	84°41'01"	320.00'	472.96'	291.60'	N82°22'28"W 431.07'
C169	84°41'01"	260.00'	384.28'	236.93'	N82°22'28"W 350.25'

CURVE	DELTA	RADIUS	ARC	TAN.	CHORD
C170	39°28'18"	320.00'	220.45'	114.80'	N20°17'48"W 216.12'
C171	39°28'18"	260.00'	179.12'	93.28'	N20°17'48"W 175.60'
C172	90°00'00"	25.00'	39.27'	25.00'	N44°26'21"E 35.36'
C173	90°00'00"	25.00'	39.27'	25.00'	S45°33'39"E 35.36'
C174	17°01'29"	270.00'	80.23'	40.41'	N81°16'57"E 79.93'
C175	6°59'37"	330.00'	40.28'	20.17'	N86°17'53"E 40.26'
C176	13°33'35"	330.00'	78.10'	39.23'	N76°01'17"E 77.92'
C177	13°57'27"	330.00'	80.39'	40.39'	N62°15'45"E 80.19'
C178	9°00'46"	320.00'	50.34'	25.22'	S59°47'25"W 50.29'
C179	9°00'46"	320.00'	50.34'	25.22'	S68°48'12"W 50.29'
C180	9°00'46"	320.00'	50.34'	25.22'	S77°48'58"W 50.29'
C181	9°00'46"	320.00'	50.34'	25.22'	S86°49'45"W 50.29'
C182	9°00'46"	320.00'	50.34'	25.22'	N84°09'29"W 50.29'
C183	9°00'46"	320.00'	50.34'	25.22'	N75°08'42"W 50.29'
C184	9°00'46"	320.00'	50.34'	25.22'	N66°07'56"W 50.29'
C185	9°00'46"	320.00'	50.34'	25.22'	N57°07'10"W 50.29'
C186	9°00'46"	320.00'	50.34'	25.22'	N48°06'23"W 50.29'
C187	3°34'03"	320.00'	19.92'	9.97'	N41°48'58"W 19.92'
C188	19°47'37"	260.00'	89.82'	45.36'	S65°10'51"W 89.38'
C189	19°47'37"	260.00'	89.82'	45.36'	S84°58'28"W 89.38'

CURVE	DELTA	RADIUS	ARC	TAN.	CHORD
C190	19°47'37"	260.00'	89.82'	45.36'	N75°13'55"W 89.38'
C191	19°47'37"	260.00'	89.82'	45.36'	N55°26'17"W 89.38'
C192	5°30'32"	260.00'	25.00'	12.51'	N42°47'13"W 24.99'
C193	6°12'53"	320.00'	34.71'	17.37'	N36°55'30"W 34.69'
C194	9°00'46"	320.00'	50.34'	25.22'	N29°18'41"W 50.29'
C195	9°00'46"	320.00'	50.34'	25.22'	N20°17'54"W 50.29'
C196	9°00'46"	320.00'	50.34'	25.22'	N11°17'08"W 50.29'
C197	6°13'05"	320.00'	34.73'	17.38'	N03°40'12"W 34.71'
C198	15°57'41"	260.00'	72.43'	36.45'	N32°03'06"W 72.20'
C199	19°47'37"	260.00'	89.82'	45.36'	N14°10'27"W 89.38'
C200	3°42'59"	260.00'	16.86'	8.44'	N02°25'09"W 16.86'
C242	02°15'58"	270.00'	10.68'	5.34'	N11°49'28"W 10.68'
C243	09°50'18"	561.00'	96.33'	48.28'	N82°13'15"E 96.21'
C244	39°25'45"	561.00'	386.06'	201.03'	S73°08'44"E 378.49'
C246	13°19'45"	561.00'	130.51'	65.55'	N46°45'58"W 130.22'
C247	17°29'11"	270.00'	82.40'	41.52'	N64°01'37"E 82.08'
C248	16°30'46"	481.00'	138.63'	69.80'	S19°31'56"E 138.15'
C249	11°04'14"	481.00'	92.94'	46.61'	N05°44'25"W 92.79'
C260	15°11'34"	561.00'	148.76'	74.82'	S21°44'03"E 148.32'



RECORD PLAT

MEADOW LAKES SUBDIVISION NO. 2

CITY OF NORTH RIDGEVILLE
COUNTY OF LORAIN, STATE OF OHIO

DATE: 6-14-01
DRAWN BY: RBR
CHK BY:
DWG. NAME: P-PLAT06
PATH: 01169/AD07/CONTROL

DESCRIPTION

REVISIONS

SHEET 7 OF 7

JOB NO. 01169

HS ASSOCIATES, INC.
200 Burns Road, Suite 100
P.O. Box 509
Plymouth, Ohio 43084
Phone: (614) 945-4730
Fax: (614) 945-4730
mailroom@hsassoc.com
www.hsassoc.com