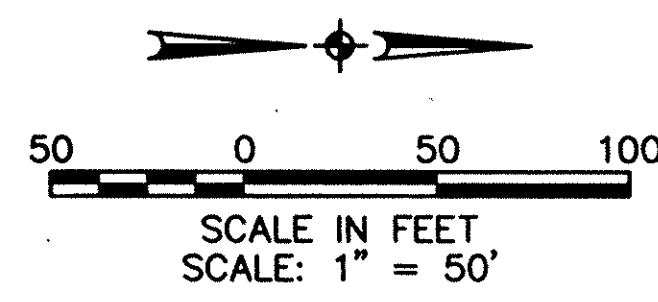
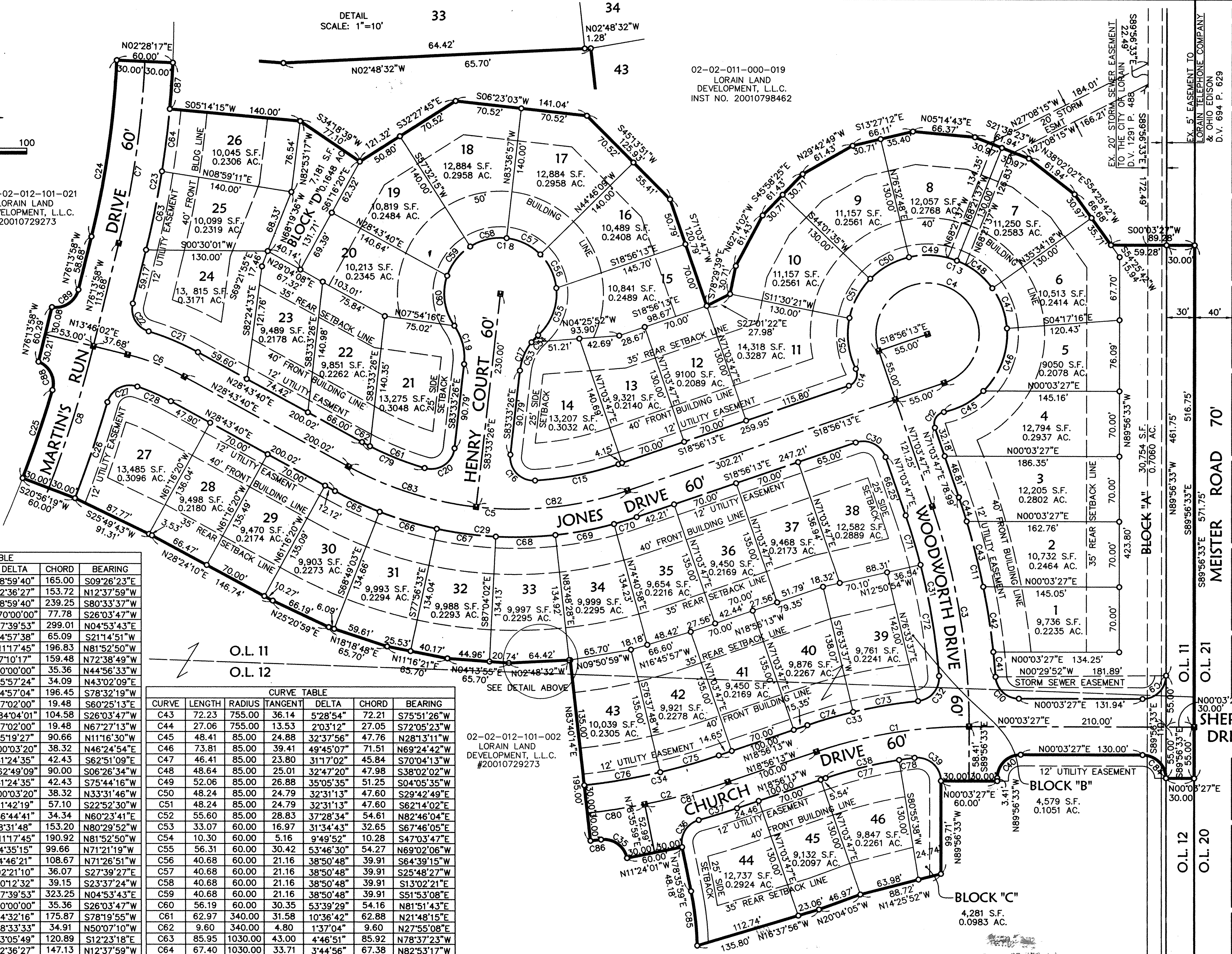


DETAIL SCALE: 1"=10' 33 34 43

02-02-011-000-019
LORAIN LAND DEVELOPMENT, L.L.C.
INST NO. 20010798462



02-02-012-101-021
LORAIN LAND DEVELOPMENT, L.L.C.
#20010729273



CURVE	LENGTH	RADIUS	TANGENT	DELTA	CHORD	BEARING
C1	165.76	500.00	83.65	18°59'40"	165.00	S09°26'23"E
C2	154.03	700.00	77.33	12°36'27"	153.72	N12°37'59"W
C3	240.35	725.00	121.29	18°59'40"	239.25	S80°33'37"W
C4	259.18	55.00	55.00	270°00'00"	77.78	S26°03'47"W
C5	307.80	370.00	163.44	47°39'53"	299.01	N04°53'43"E
C6	65.28	250.00	32.83	14°57'38"	65.09	S21°14'51"W
C7	197.15	1000.00	98.89	11°17'45"	196.83	N81°52'50"W
C8	159.58	1275.00	79.90	7°10'17"	159.48	N72°38'49"W
C9	39.27	25.00	25.00	90°00'00"	35.36	N44°56'33"W
C10	37.51	25.00	23.30	85°57'24"	34.09	N43°02'09"E
C11	197.01	755.00	99.07	14°57'04"	196.45	S78°32'19"W
C12	22.02	13.00	14.70	97°02'00"	19.48	S60°25'13"E
C13	421.42	85.00	66.33	284°04'01"	104.58	S26°03'47"W
C14	22.02	13.00	14.70	97°02'00"	19.48	N67°27'13"W
C15	90.93	340.00	45.74	15°19'27"	90.66	N11°16'30"W
C16	43.66	25.00	29.82	100°03'20"	38.32	N46°24'54"E
C17	43.36	60.00	22.68	41°24'35"	42.43	S62°51'09"E
C18	275.22	60.00	68.03	262°49'09"	90.00	S06°26'34"W
C19	43.36	60.00	22.68	41°24'35"	42.43	S75°44'16"W
C20	43.66	25.00	29.82	100°03'20"	38.32	N33°31'46"W
C21	57.20	280.00	28.70	11°42'19"	57.10	S22°52'30"W
C22	37.85	25.00	23.62	86°44'41"	34.34	N60°23'41"E
C23	153.34	1030.00	76.81	8°31'48"	153.20	N80°29'52"W
C24	191.23	970.00	95.93	11°17'45"	190.92	N81°52'50"W
C25	99.68	1245.00	49.87	4°35'15"	99.66	N71°21'19"W
C26	108.70	1305.00	54.38	4°46'21"	108.67	N71°26'51"W
C27	40.30	25.00	26.05	92°21'10"	36.07	S27°39'27"E
C28	39.20	220.00	19.65	10°12'32"	39.15	S23°37'24"W
C29	332.76	400.00	176.69	47°39'53"	323.25	N04°53'43"E
C30	39.27	25.00	25.00	90°00'00"	35.36	S26°03'47"W
C31	176.34	695.00	88.65	14°32'16"	175.87	S78°19'55"W
C32	38.64	25.00	24.38	88°33'33"	34.91	N50°07'10"W
C33	121.15	530.00	60.84	13°05'49"	120.89	S12°23'18"E
C34	147.43	670.00	74.01	12°36'27"	147.13	N12°37'59"W
C35	37.45	25.00	23.24	85°49'20"	34.04	S35°41'19"W
C36	37.45	25.00	23.24	85°49'21"	34.04	S58°29'20"E
C37	42.80	730.00	21.41	3°21'33"	42.79	N17°15'26"W
C38	97.57	470.00	48.96	11°53'41"	97.40	S12°59'22"E
C39	42.37	25.00	28.31	97°05'59"	37.48	S41°30'28"W
C40	39.27	25.00	25.00	90°00'00"	35.36	S44°56'33"E
C41	26.87	755.00	13.44	2°02'21"	26.87	S84°59'40"W
C42	70.85	755.00	35.45	5°22'37"	70.83	S81°17'12"W

CURVE	LENGTH	RADIUS	TANGENT	DELTA	CHORD	BEARING
C43	72.23	755.00	36.14	5°28'54"	72.21	S75°51'26"W
C44	27.06	755.00	13.53	2°03'12"	27.05	S72°05'23"W
C45	48.41	85.00	24.88	32°37'56"	47.76	N28°13'11"W
C46	73.81	85.00	39.41	49°45'07"	71.51	N69°24'42"W
C47	46.41	85.00	23.80	31°17'02"	45.84	S70°04'13"W
C48	48.64	85.00	25.01	32°47'20"	47.98	S38°02'02"W
C49	52.06	85.00	26.88	35°05'35"	51.25	S04°05'35"W
C50	48.24	85.00	24.79	32°31'13"	47.60	S29°42'49"E
C51	48.24	85.00	24.79	32°31'13"	47.60	S62°14'02"E
C52	55.60	85.00	28.83	37°28'34"	54.61	N82°46'04"E
C53	33.07	60.00	16.97	31°34'43"	32.65	S67°46'05"E
C54	10.30	60.00	5.16	9°49'52"	10.28	S47°03'47"E
C55	56.31	60.00	30.42	53°46'30"	54.27	N69°02'06"W
C56	40.68	60.00	21.16	38°50'48"	39.91	S64°39'15"W
C57	40.68	60.00	21.16	38°50'48"	39.91	S25°48'27"W
C58	40.68	60.00	21.16	38°50'48"	39.91	S13°02'21"E
C59	40.68	60.00	21.16	38°50'48"	39.91	S51°53'08"E
C60	56.19	60.00	30.35	53°39'29"	54.16	N81°51'43"E
C61	62.97	340.00	31.58	10°36'42"	62.88	N21°48'15"E
C62	9.60	340.00	4.80	1°37'04"	9.60	N27°55'08"E
C63	85.95	1030.00	43.00	4°46'51"	85.92	N78°37'23"W
C64	67.40	1030.00	33.71	3°44'56"	67.38	N82°53'17"W
C65	52.68	400.00	26.38	7°32'43"	52.64	N24°57'18"E
C66	63.70	400.00	31.92	9°07'30"	63.64	N16°37'12"E
C67	63.70	400.00	31.92	9°07'30"	63.64	N07°29'42"E
C68	63.70	400.00	31.92	9°07'30"	63.64	N01°37'47"W
C69	63.70	400.00	31.92	9°07'30"	63.64	N10°45'17"W
C70	25.27	400.00	12.64	3°37'11"	25.27	N17°07'37"W
C71	55.11	695.00	27.57	4°32'37"	55.10	S73°20'05"W
C72	121.23	695.00	60.77	9°59'39"	121.08	S80°36'13"W

CURVE	LENGTH	RADIUS	TANGENT	DELTA	CHORD	BEARING
C73	70.30	530.00	35.20	7°35'59"	70.25	S09°38'23"E
C74	50.85	530.00	25.45	5°29'50"	50.83	S16°11'18"E
C75	65.10	670.00	32.57	5°34'01"	65.07	N16°09'13"W
C76	82.33	670.00	41.22	7°02'27"	82.28	N09°50'59"W
C77	80.92	470.00	40.56	9°51'51"	80.82	S14°00'17"E
C78	16.66	470.00	8.33	2°01'50"	16.66	S08°03'27"E

CURVE	LENGTH	RADIUS	TANGENT	DELTA	CHORD	BEARING
C79	72.57	340.00	36.42	12°13'46"	72.43	N22°36'47"E
C80	61.95	700.00	31.00	05°04'15"	61.93	N08°51'53"W
C81	92.08	700.00	46.11	07°32'12"	92.01	S15°10'07"E
C82	163.89	370.00	83.31	25°22'47"	162.56	S06°14'50"W
C83	143.91	370.00	72.88	22°17'06"	143.00	S17°35'07"W
C84	39.27	25.00	25.00	90°00'00"	35.36	S45°03'27"W

NOTE: LENGTH AND RADIUS UNITS ARE IN FEET

CURVE	LENGTH	RADIUS	TANGENT	DELTA	CHORD	BEARING
C88	37.15	25.00	22.96	85°08'17"	33.82	S63°46'56"W
C89	37.27	25.00	23.07	85°24'47"	33.91	N33°31'35"W

CURVE	LENGTH	RADIUS	TANGENT	DELTA	CHORD	BEARING
C85	58.78	330.00	29.47	10°12'20"	58.70	S83°42'09"W
C86	11.38	730.00	5.69	00°53'35"	11.38	S08°46'33"E
C87	49.72	1030.00	24.87	02°45'57"	49.72	S86°08'44"E

RECORD PLAT
THE LANDINGS AT MARTIN'S RUN
SUBDIVISION NO. 1
PART OF ORIGINAL LOTS 11 & 12, TRACT 2 BLACK RIVER TOWNSHIP
CITY OF LORAIN, COUNTY OF LORAIN, STATE OF OHIO

DATE: 08-21-01
DRAWN BY: DAM
CHK'D BY:
DWG. NAME: PLAT01
PATH: R:\01111
F.B.

REVISIONS

DATE	DESCRIPTION
8-20-02	REVISED CURVE TABLES
7/8/02	ISSUE DATE

BY: _____
DATE: _____

MS ASSOCIATES, INC.
940 Burns Road, Suite 100
P.O. Box 569
Elyria, Ohio 44035
Phone (440) 365-4790
Fax (440) 365-4790
www.msassoc.com

MS ASSOCIATES

SHEET 2 OF 2
JOB NO. 01111