

# BERKSHIRE MEADOWS SUBDIVISION

PART OF ORIGINAL SHEFFIELD TOWNSHIP LOT NUMBER 14,  
VILLAGE OF SHEFFIELD, COUNTY OF LORAIN, STATE OF OHIO

0.5009 OF AN ACRE IN BLOCK "A"  
0.1369 OF AN ACRE IN BLOCK "B" (STORM SEWER EASEMENT)  
0.2150 OF AN ACRE IN BLOCK "C"  
0.3443 OF AN ACRE IN BLOCK "D"  
8.7455 ACRES IN SUBLOTS 1-18  
1.9488 ACRES IN RIGHT-OF-WAY  
11.8914 ACRES TOTAL IN SUBDIVISION

### APPROVAL AND ACCEPTANCE SIGNATURES

APPROVED THIS 8<sup>th</sup> DAY OF AUGUST, 2002

Darlene Ondercin  
DARLENE ONDERCIN, MAYOR

APPROVED THIS 8<sup>th</sup> DAY OF AUGUST, 2002

Thomas M. Krall, P.E. 8-8-02  
THOMAS M. KRALL, VILLAGE OF SHEFFIELD ENGINEER

APPROVED THIS 8<sup>th</sup> DAY OF AUGUST, 2002

Darlene Ondercin  
SHEFFIELD VILLAGE PLANNING COMMISSION  
DARLENE ONDERCIN, CHAIRMAN

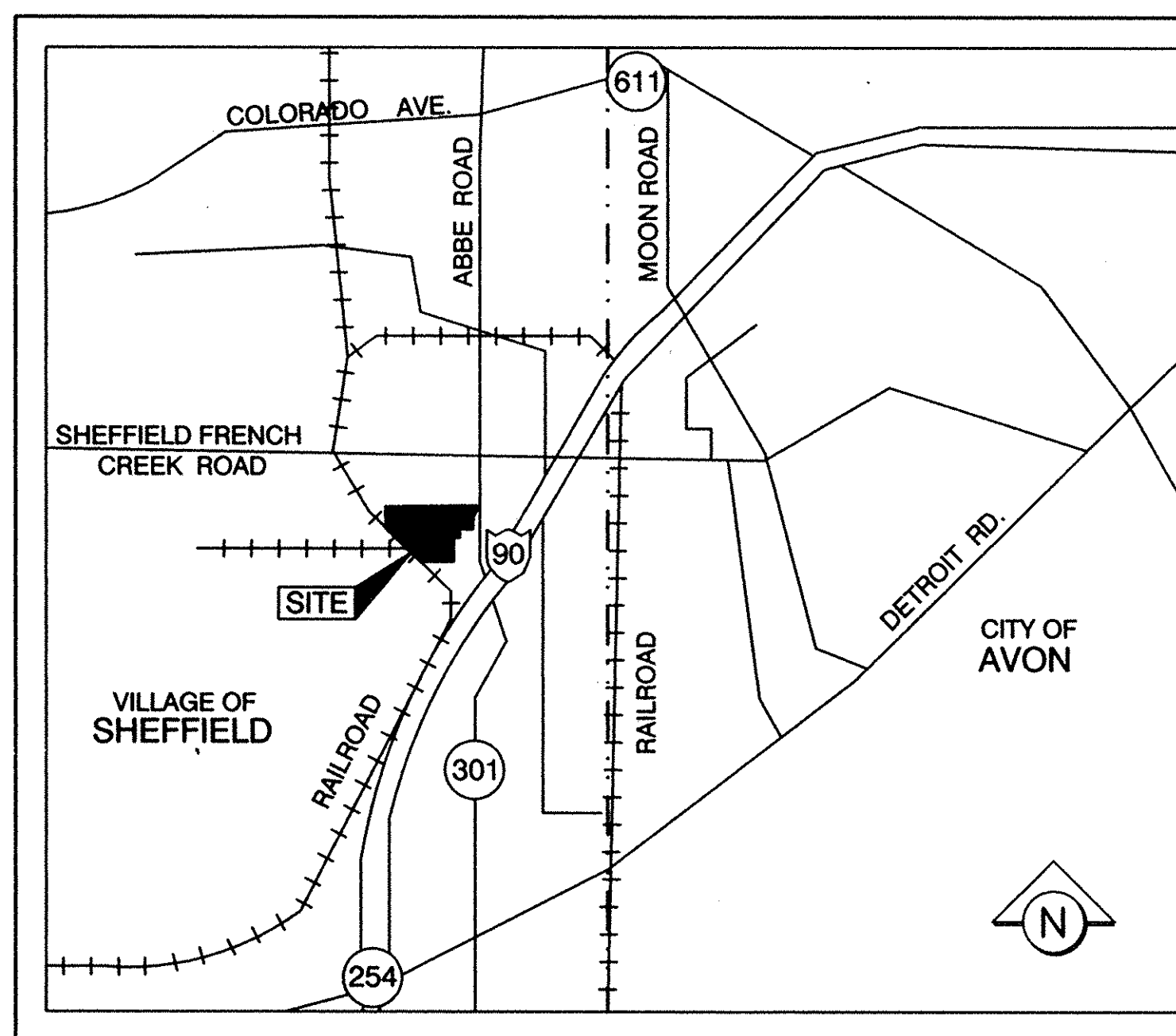
APPROVED THIS 8<sup>th</sup> DAY OF AUGUST, 2002

Leo Sheets  
LEO SHEETS, VILLAGE ADMINISTRATOR

APPROVED AS TO FORM THIS 11<sup>th</sup> DAY OF September, 2002

Gail Schaffer  
GAIL SCHAFFER, LAW DIRECTOR

### LOCATION MAP



NTS

### OWNER'S CERTIFICATE

THIS IS TO CERTIFY THAT THE UNDERSIGNED OWNER OF LANDS EMBRACED WITHIN THIS FOREGOING PLAT OF BERKSHIRE MEADOWS SUBDIVISION AND CONTAINING 11.8914 ACRES BEING SUBLOT NUMBERS 1 - 18 INCLUSIVE, REPRESENTING 8.7455 ACRES IN SUBLOTS, 1.1971 ACRES IN BLOCKS 'A', 'B', 'C', & 'D' COMBINED AND 1.9488 ACRES IN DEDICATED RIGHT-OF-WAY HEREBY ACCEPT THE SAME TO BE CORRECT AND DEDICATE TO PUBLIC USE THE STREETS AND DRAINAGE EASEMENT AS SHOWN HEREON.

HARRY GERENT  
OWNER

Harry Gerent  
SIGNED  
8/15/02  
DATE

MICHAEL BRAMHALL  
WITNESS

Michael Bramhall  
SIGNED  
8/15/02  
DATE

CHRIS L. HOWARD  
WITNESS

Chris L. Howard  
SIGNED  
8/15/02  
DATE

### NOTARIAL SEAL

STATE OF OHIO  
COUNTY OF LORAIN S.S.

BEFORE ME, A NOTARY PUBLIC IN AND FOR SAID COUNTY AND STATE DID PERSONALLY APPEAR THE ABOVE SIGNED MORTGAGEE WHO ACKNOWLEDGED THE SIGNING OF THIS PLAT TO BE THEIR OWN FREE ACT AND DEED.

IN TESTIMONY WHEREOF I HAVE HEREUNTO SET MY HAND AND OFFICIAL SEAL THIS 15<sup>th</sup> DAY OF August, 2002.

BY: Mary J. Bramhall, NOTARY PUBLIC

MARY J. BRAMHALL, NOTARY PUBLIC  
STATE OF OHIO  
MY COMMISSION EXPIRES SEPT. 3, 2002

ALL SUBLOTS ARE SUBJECT TO A 12' WIDE UTILITY EASEMENT, ADJACENT AND CONTIGUOUS TO ALL STREET RIGHT-OF-WAYS

TRANSFERRED  
IN COMPLIANCE WITH SEC. 319-202  
OHIO REV. CODE

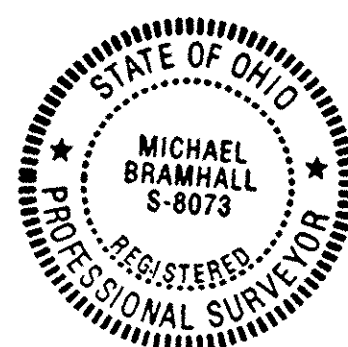
SEP 25 2002

MARK R. STEWART  
LORAIN COUNTY AUDITOR

### SURVEYOR'S CERTIFICATE

THIS IS TO CERTIFY THAT AT THE REQUEST OF THE OWNERS I HAVE SURVEYED AND PLATTED "BERKSHIRE MEADOWS SUBDIVISION" AS SHOWN HEREON AND CONTAINING 11.8914 ACRES OF LAND IN ORIGINAL SHEFFIELD TOWNSHIP LOT NO. 14 OF SHEFFIELD VILLAGE, LORAIN COUNTY, OHIO. AT ALL POINTS THUSLY INDICATED ©, IRON PIN MONUMENTS WERE FOUND AND AT ALL POINTS THUSLY INDICATED ○, IRON PIN MONUMENTS WERE SET. DISTANCES ARE SHOWN IN FEET AND DECIMAL PARTS THEREOF. BEARINGS SHOWN ARE ASSUMED AND USED TO DESCRIBE ANGLES ONLY. THE PLAT REPRESENTS A SURVEY IN WHICH THE TRAVERSE OF THE EXTERIOR BOUNDARIES OF THE TRACT AND OF EACH BLOCK WHEN COMPUTED FROM FIELD MEASUREMENTS OF THE GROUND CLOSED WITHIN A LIMIT OF ERROR OF ONE (1) FOOT TO TEN THOUSAND (10,000) FEET OF THE PERIMETER BEFORE BALANCING THE SURVEY, ALL OF WHICH I CERTIFY TO BE CORRECT.

BY: Michael C. Bramhall  
MICHAEL C. BRAMHALL P.E., P.S.  
PROFESSIONAL SURVEYOR NO. 8073  
PROFESSIONAL ENGINEER NO. 61797



LORAIN COUNTY RECORDER  
MARY ANN JAMISON

LORAIN COUNTY AUDITOR  
MARK R. STEWART

SEP 25 2002  
RECEIVED FOR RECORD  
at 10:50 clock A.M. in Plat RECORD  
VOL. 73 MARY ANN JAMISON  
PAGE 26 Lorain County Recorder  
26 incl. \$26.40 TML/BAH

7/24/02	GENERAL REVISIONS
10/11/01	PRELIMINARY - FOR REVIEW ONLY

PREPARED FOR:  
GERENT REALTY, INC.  
3470 ABBE ROAD  
SHEFFIELD VILLAGE, OHIO 44054

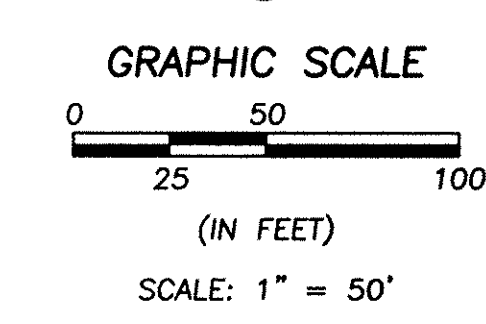
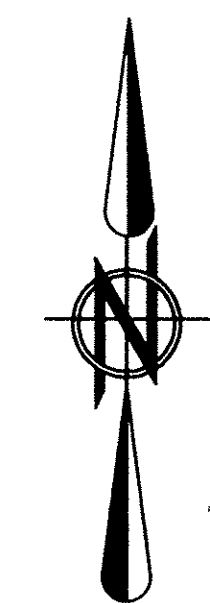
**BRAMHALL**  
ENGINEERING AND SURVEYING CO., INC.  
37307 HARVEST DRIVE AVON, OHIO 44011  
(440) 934 - 7878 (440) 934 - 7879 FAX

**BERKSHIRE MEADOWS SUBDIVISION**  
**PLAT TITLE SHEET**  
**SHEFFIELD VILLAGE, OHIO**

SHEET  
1 OF  
2  
JOB NO.  
01-1068

# BERKSHIRE MEADOWS SUBDIVISION

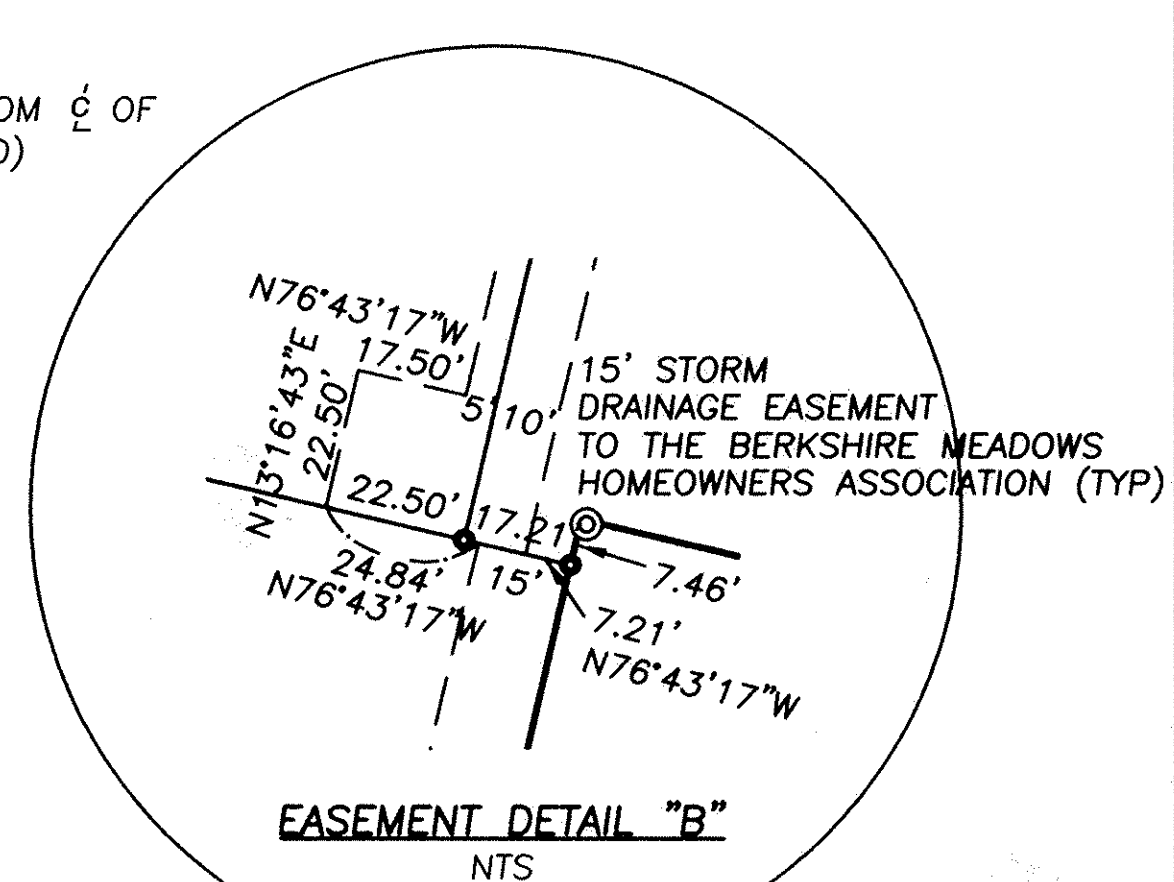
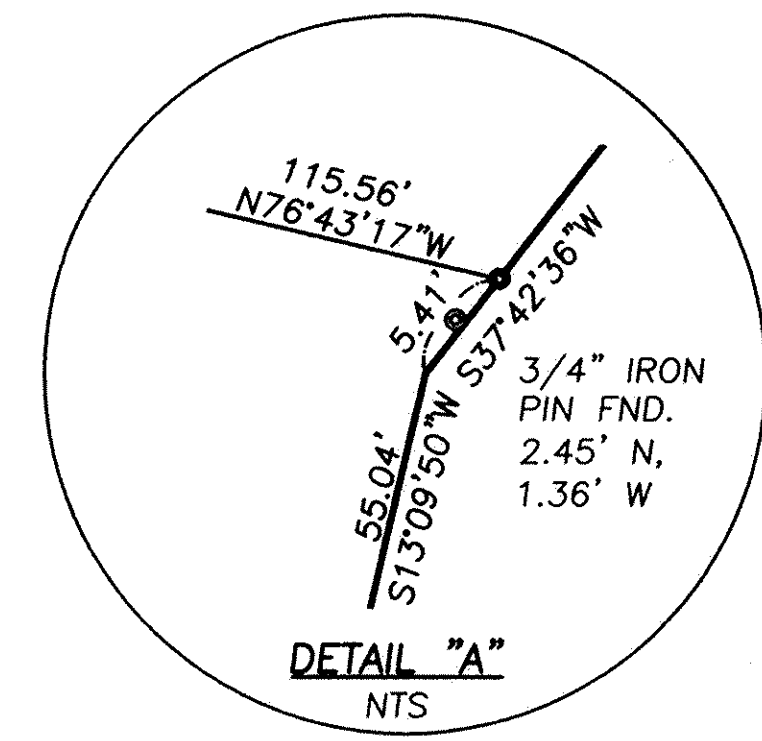
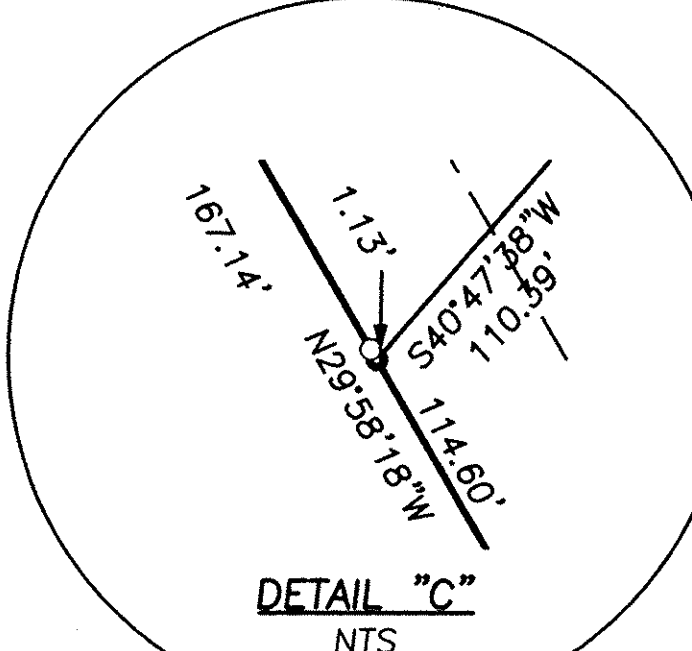
SHEFFIELD FRENCH CREEK ROAD



- LEGEND**
- IRON PIN FOUND AS INDICATED
  - ⊕ MONUMENT BOX SET W/ 5/8" REBAR W/ CAP STAMPED "BRAMHALL"
  - 5/8" REBAR SET W/ CAP STAMPED "BRAMHALL"
  - ⊕ MONUMENT BOX FOUND AS INDICATED



SHADED AREA LIES IN FLOOD ZONE "A0" (AREA OF 100-YEAR SHALLOW FLOODING) PER FLOOD INSURANCE RATE MAP (F.I.R.M.) 390354 0005 B DATED JUNE 18, 1980. (GRAPHICALLY INTERPOLATED AT THE 630.00 CONTOUR LINE)



CURVE TABLE						
CURVE	LENGTH	RADIUS	TANGENT	DELTA	CHORD	BEARING
C1	17.90'	67.00'	9.01'	15°18'38"	17.85'	N 84°22'36" W
C2	80.20'	67.00'	45.69'	68°35'14"	75.50'	S 53°40'28" W
C3	80.20'	67.00'	45.69'	68°35'13"	75.50'	S 14°54'45" E
C4	80.20'	67.00'	45.69'	68°35'14"	75.50'	S 83°29'59" E
C5	26.11'	67.00'	13.22'	22°19'40"	25.94'	N 51°02'34" E
C6	74.14'	67.00'	41.38'	63°24'19"	70.42'	S 71°34'19" W
C7	47.12'	30.00'	30.00'	90°00'00"	42.43'	N 31°43'17" W
C8	42.75'	67.00'	22.13'	36°33'25"	42.03'	N 31°33'26" E
C9	31.39'	67.00'	15.99'	26°50'35"	31.10'	N 63°15'25" E
C10	98.17'	67.00'	60.28'	83°57'17"	89.62'	S 34°42'04" W
C11	80.20'	67.00'	45.69'	68°35'13"	75.50'	S 41°34'11" E
C12	80.20'	67.00'	45.69'	68°35'14"	75.50'	N 69°50'36" E
C13	26.04'	67.00'	13.19'	22°16'16"	25.88'	N 24°24'51" E
C14	47.12'	30.00'	30.00'	90°00'00"	42.43'	S 58°16'43" W
C15	284.62'	67.00'	108.48'	243°24'00"	114.01'	S 18°25'16" E
C16	74.14'	67.00'	41.38'	63°24'00"	70.41'	N 44°58'43" E
C17	284.62'	67.00'	108.48'	243°24'00"	114.01'	S 45°01'17" E

0.5009 OF AN ACRE IN BLOCK "A"  
0.1369 OF AN ACRE IN BLOCK "B" (STORM SEWER EASEMENT)  
0.2150 OF AN ACRE IN BLOCK "C"  
0.3443 OF AN ACRE IN BLOCK "D"  
8.7455 ACRES IN SUBLOTS 1-18  
1.9488 ACRES IN RIGHT-OF-WAY  
11.8914 ACRES TOTAL IN SUBDIVISION

REVISIONS	DATE	DESCRIPTION
7/24/02	GENERAL REVISIONS	
1/18/02	REVISED 15' STORM SEWER EASEMENT	
10/11/01	PRELIMINARY - FOR REVIEW ONLY	

PREPARED FOR:  
**GERENT REALTY, INC.**  
3470 ABBE ROAD  
SHEFFIELD VILLAGE, OHIO 44054

**BRAMHALL**  
ENGINEERING AND SURVEYING CO., INC.  
37307 HARVEST DRIVE AVON, OHIO 44011  
(440) 934 - 7878 (440) 934 - 7879 FAX

**BERKSHIRE MEADOWS SUBDIVISION PLAT**  
SHEFFIELD VILLAGE, OHIO

SHEET	2	OF	2
JOB NO.	01-1068		