

LOCATION PLAN  
SCALE: 1" = 1000'

P.P.N. 04-00-007-150-082  
WATERSIDE CROSSINGS LTD.  
INSTRUMENT NO. 980578551  
(REMAINDER)

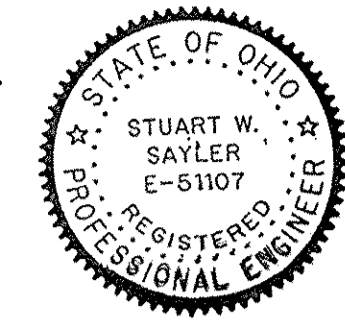
EXISTING OPEN SPACE OWNED BY THE CONDOMINIUM ASSOCIATION AND RESTRICTED AGAINST BUILDING. AREA IS ALSO COVERED BY BLANKET DRAINAGE EASEMENT TO CITY PER ASSOCIATION DOCUMENTS)

**CERTIFICATION**

THIS IS TO CERTIFY THAT THE ATTACHED DRAWINGS CORRECTLY REPRESENTS THE BUILDINGS AS CONSTRUCTED AND THAT THERE ARE NO ENCROACHMENTS ON ABUTTING PROPERTIES.

*Stuart W. Saylor*  
STUART W. SAYLER, P.E.  
PROFESSIONAL ENGINEER NO. E-51107

*Stuart W. Saylor*  
STUART W. SAYLER  
PROFESSIONAL SURVEYOR NO. S-8028



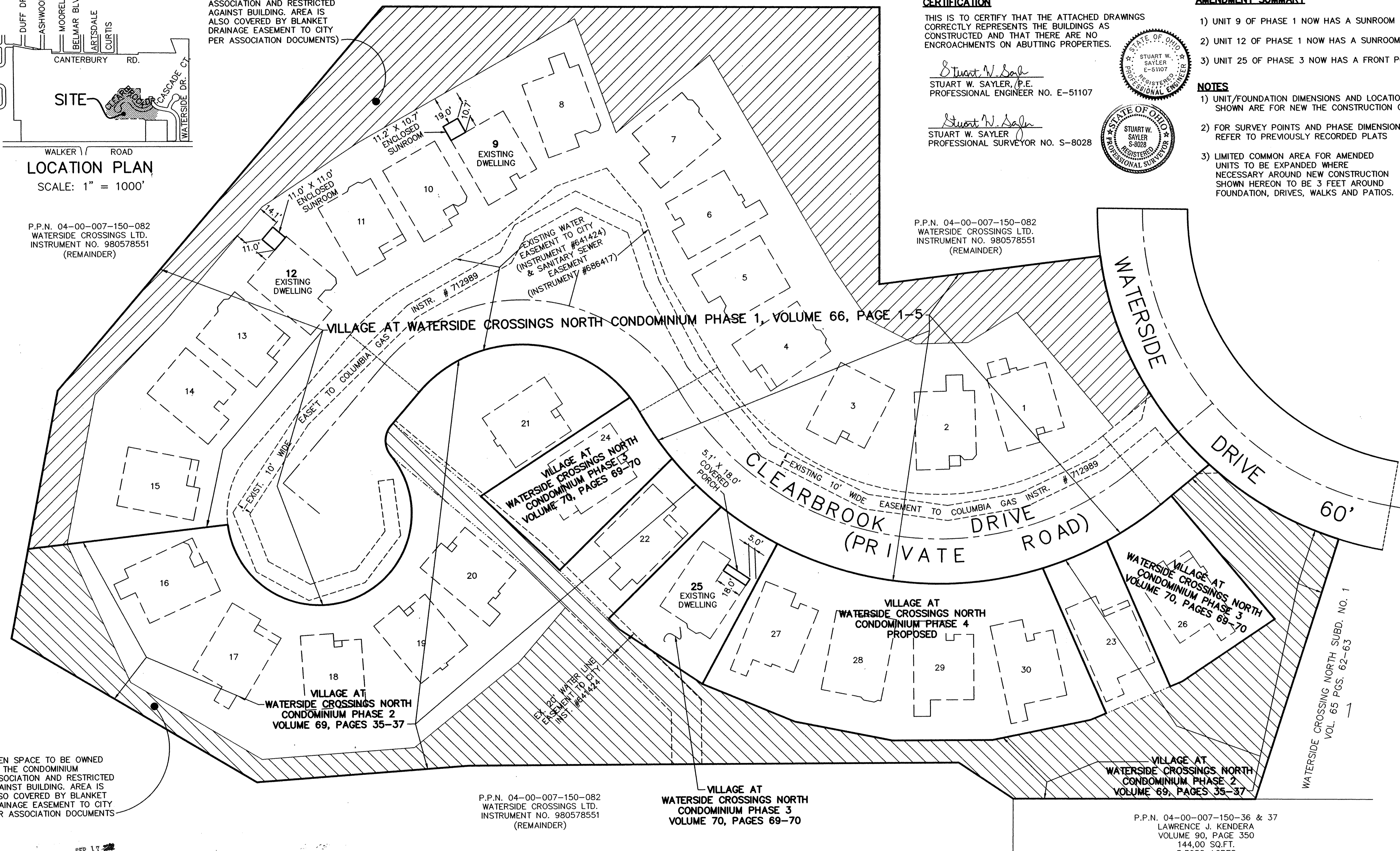
**AMENDMENT SUMMARY**

- 1) UNIT 9 OF PHASE 1 NOW HAS A SUNROOM
- 2) UNIT 12 OF PHASE 1 NOW HAS A SUNROOM
- 3) UNIT 25 OF PHASE 3 NOW HAS A FRONT PORCH

**NOTES**

- 1) UNIT/FOUNDATION DIMENSIONS AND LOCATIONS SHOWN ARE FOR NEW THE CONSTRUCTION ONLY
- 2) FOR SURVEY POINTS AND PHASE DIMENSIONS REFER TO PREVIOUSLY RECORDED PLATS
- 3) LIMITED COMMON AREA FOR AMENDED UNITS TO BE EXPANDED WHERE NECESSARY AROUND NEW CONSTRUCTION SHOWN HEREON TO BE 3 FEET AROUND FOUNDATION, DRIVES, WALKS AND PATIOS.

P.P.N. 04-00-007-150-082  
WATERSIDE CROSSINGS LTD.  
INSTRUMENT NO. 980578551  
(REMAINDER)



OPEN SPACE TO BE OWNED BY THE CONDOMINIUM ASSOCIATION AND RESTRICTED AGAINST BUILDING. AREA IS ALSO COVERED BY BLANKET DRAINAGE EASEMENT TO CITY PER ASSOCIATION DOCUMENTS

P.P.N. 04-00-007-150-082  
WATERSIDE CROSSINGS LTD.  
INSTRUMENT NO. 980578551  
(REMAINDER)

VILLAGE AT WATERSIDE CROSSINGS NORTH CONDOMINIUM PHASE 3  
VOLUME 70, PAGES 69-70

P.P.N. 04-00-007-150-36 & 37  
LAWRENCE J. KENDERA  
VOLUME 90, PAGE 350  
144.00 SQ.FT.  
3.3058 ACRES

RECEIVED FOR RECORD  
at 10:40 clock A.M. in 2nd RECORD  
VOL. 73 MARY ANN JAMISON  
PAGE 17 Lorain County Recorder  
18 incl. Box: 4674  
#9240  
10/17/2002  
GRAPHIC SCALE: 1" = 30'

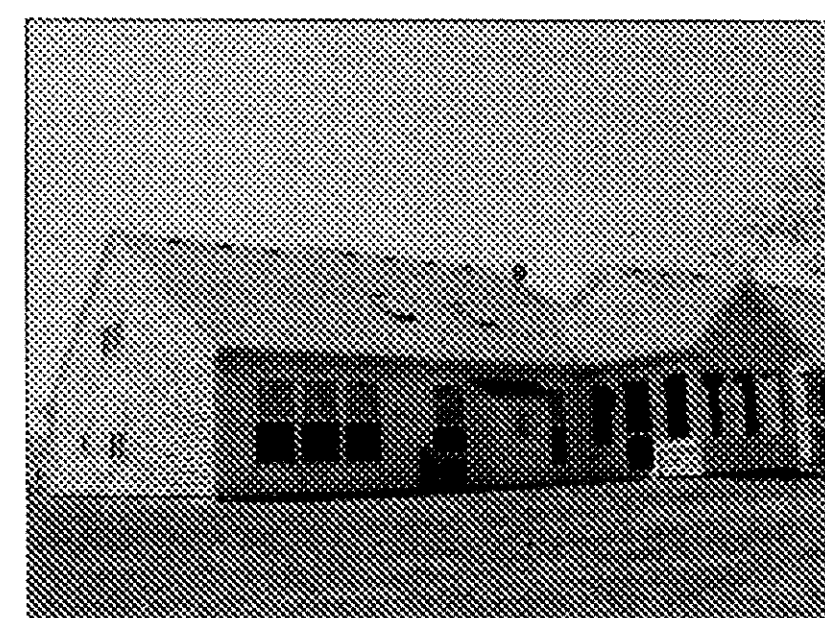
NO TRANSFER NECESSARY  
MARK R. STEWART  
LORAIN COUNTY AUDITOR  
9-17-2002  
DEPUTY

REVISIONS	REV.	PER	DATE
	6-14-02	REV. PER	LORAIN COUNTY TAX MAP DEPARTMENT

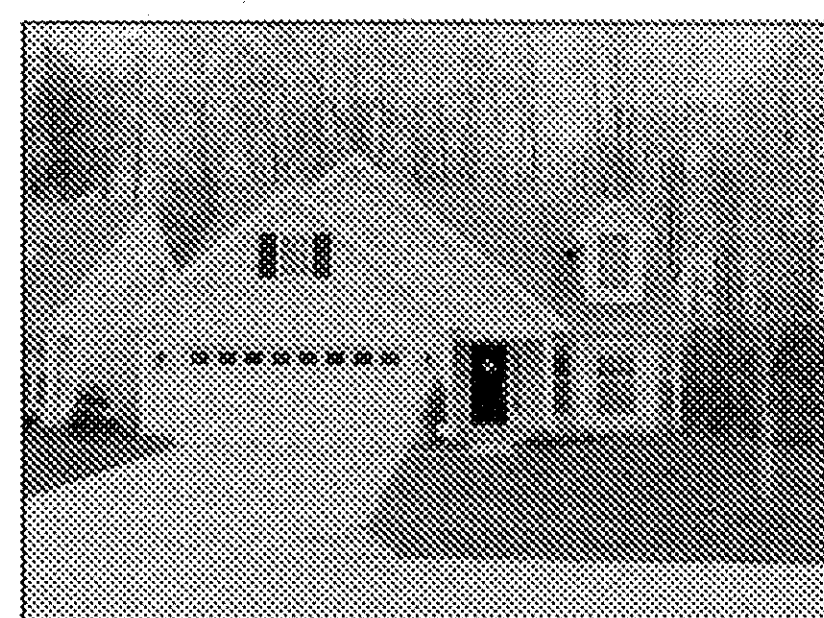
**VILLAGE AT WATERSIDE CROSSINGS  
N. CONDO. PH'S 1 - 3 AMENDED**  
OF PART OF ORIGINAL AVON TWP. SECTION NO. 7  
CITY OF AVON LAKE, LORAIN COUNTY, OHIO

**THE HENRY G. REITZ  
ENGINEERING COMPANY**  
4214 ROCKY RIVER DRIVE  
CLEVELAND, OHIO 44135  
PHONE: (216) 251-3033

1/2  
MAY 2002



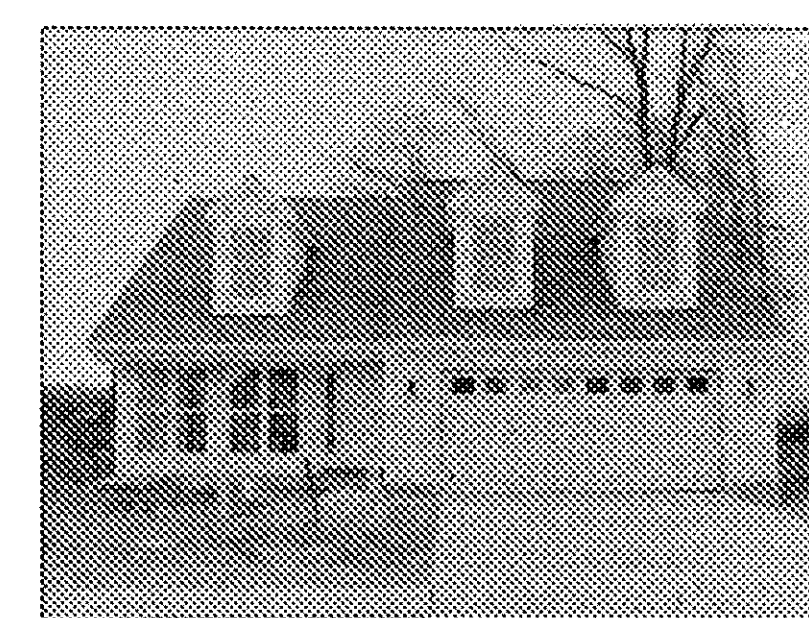
UNIT No. 9 REAR



UNIT No. 12 FRONT



UNIT No. 12 REAR



UNIT No. 25 FRONT

REVISIONS		
	6-14-02	REV. PER LORAIN COUNTY TAX MAP DEPARTMENT

**VILLAGE AT WATERSIDE CROSSINGS**  
**N. CONDO. PH'S 1 - 3 AMENDED**  
 OF PART OF ORIGINAL AVON TWP. SECTION NO. 7  
 CITY OF AVON LAKE, LORAIN COUNTY, OHIO

**THE HENRY G. REITZ**  
**ENGINEERING COMPANY**  
 4214 ROCKY RIVER DRIVE  
 CLEVELAND, OHIO 44135  
 PHONE: (216) 251-3033

2	2
MAY 2002	

L:\sings\AV\condo-n\condo-em-2.dwg, r/jw, 1:10