

**LEGEND**  
 ○ 5/8" CAPPED REBAR SET  
 ● IRON PIN FOUND  
 ☒ MONUMENT BOX FOUND

**TOTAL AREA PHASE 15**  
**0.5028 AC.**

**CURVE DATA**

CURVE	RADIUS	LENGTH	TANGENT	CHORD	BEARING	DELTA
C1	25.00'	39.27'	25.00'	35.36'	N48°54'17"E	90°00'00"
C2	89.00'	97.60'	54.36'	92.78'	S35°19'14"W	62°49'55"
C3	24.09'	28.52'	16.20'	26.88'	N52°10'47"W	67°49'53"
C4	111.00'	41.42'	20.95'	41.18'	S56°02'47"W	21°22'49"
C5	289.00'	92.98'	46.90'	92.58'	N57°31'10"E	18°26'05"
C6	289.00'	62.80'	31.52'	62.67'	N29°00'29"E	12°26'59"
C7	111.00'	61.91'	31.78'	61.11'	S38°45'42"W	31°57'26"
C8	89.00'	106.91'	60.97'	100.60'	N57°11'42"E	68°49'27"
C9	311.00'	48.48'	24.29'	48.43'	N35°46'40"E	8°55'51"
C10	311.00'	89.98'	45.31'	89.67'	N58°26'52"E	16°34'40"
C11	311.00'	47.79'	23.94'	47.74'	N54°33'40"E	8°48'16"
C12	311.00'	42.19'	21.13'	42.16'	N62°51'00"E	7°46'24"

CONTINUED ON SHEET 3

**SHEET INDEX**

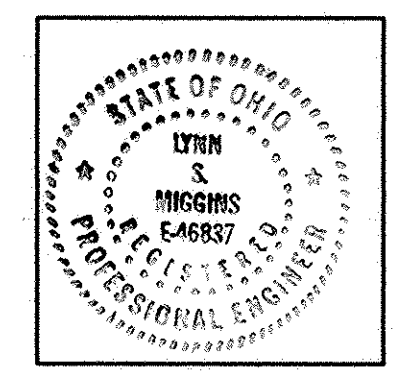
SHEET NO.	DESCRIPTION
1	SURVEY MAP & MISC.
2	SURVEY MAP & MISC. CONTINUED
3	CURVE DATA & OWNERSHIP TABLE
4	FLOOR & FOUNDATION PLANS
5	ELEVATION VIEWS

**TRANSFERRED**  
 IN COMPLIANCE WITH SEC. 319-202  
 Ohio Rev. Code  
 AUG 30 2002  
 Mark R. Stewart  
 Lorain County Auditor

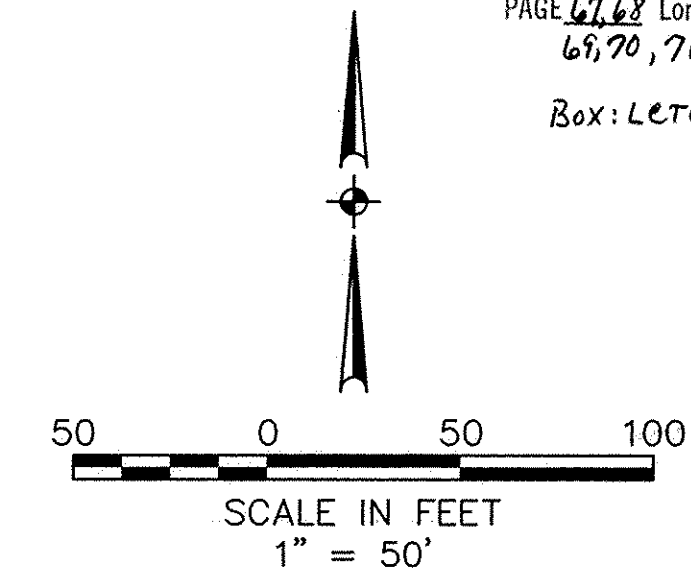
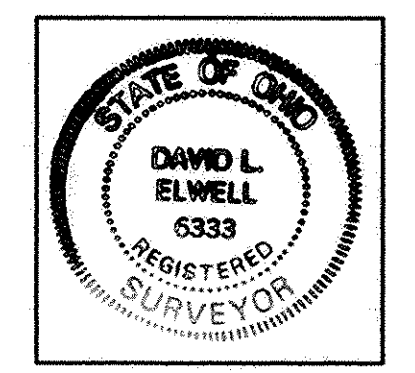
**AUG 30 2002**  
 RECEIVED FOR RECORD  
 at 10:43 clock A.M. in PLAT RECORD  
 VOL. 72 MARY ANN JAMISON  
 PAGE 17, 62 Lorain County Recorder  
 68, 70, 71  
 Box: LERC 216 00  
 PAH

**CERTIFICATION**  
 THIS IS TO CERTIFY THAT THE ATTACHED DRAWINGS CORRECTLY REPRESENT THE BUILDINGS AS CONSTRUCTED AND THAT THERE ARE NO ENCROACHMENTS ON ABUTTING PROPERTIES, EXCEPT AS SHOWN.

*Lynn S. Miggins*  
**LYNN S. MIGGINS**  
 PROFESSIONAL ENGINEER NO. 46837



*David L. Elwell*  
**DAVID L. ELWELL**  
 PROFESSIONAL SURVEYOR NO. 6333



DATE	DESCRIPTION	BY
8-21-02	ORIGINAL ISSUE	ABR

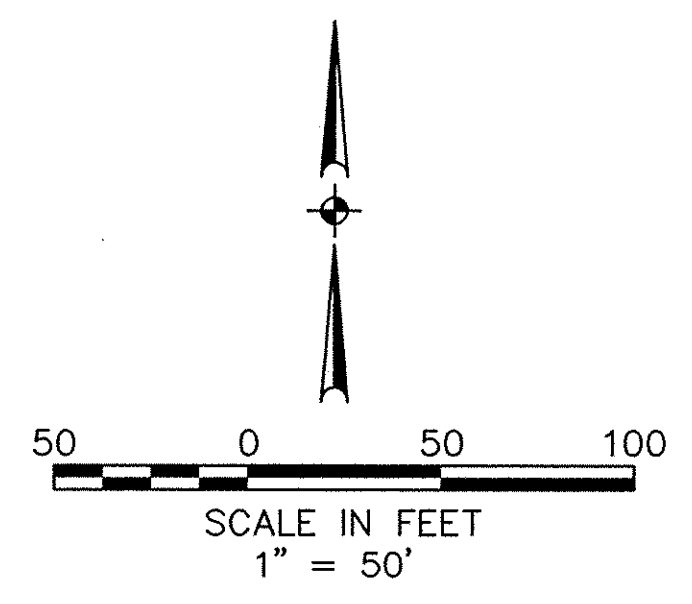
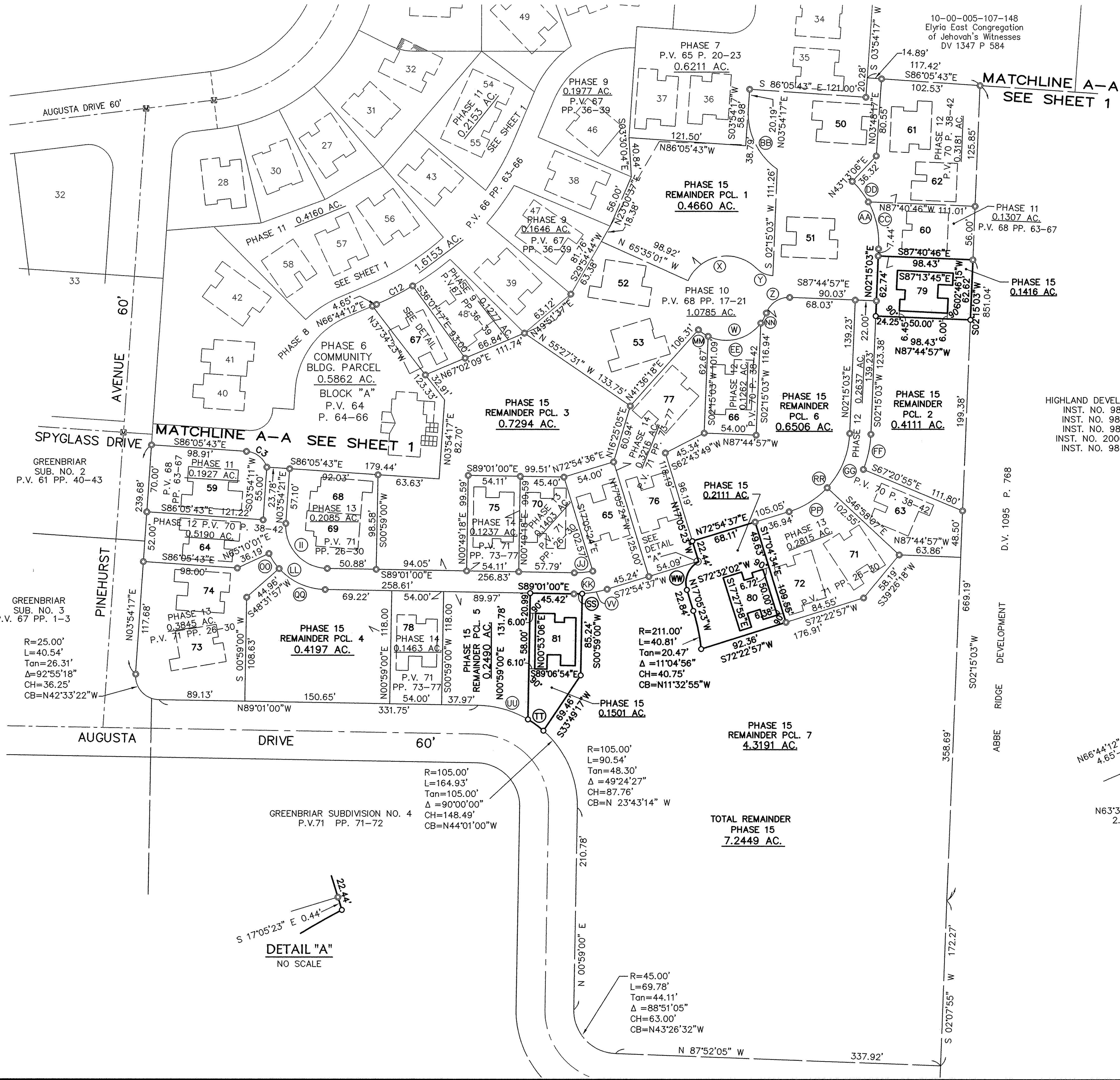
**KS ASSOCIATES, INC.**  
 260 Burns Road, Suite 100  
 P.O. Box 569  
 Elyria, Ohio 44036  
 Phone (440) 365-4730  
 Fax (440) 365-4790  
 mailroom@ksassoc.com  
 www.ksassoc.com

**STONEHEDGE CONDOMINIUMS**  
**PHASE NO. 15**

PART OF CARLISLE TOWNSHIP SECTION NO. 5  
 CITY OF ELYRIA COUNTY OF LORAIN STATE OF OHIO

SHEET 1 OF 5  
 JOB NO. 92424-CP15

DATE: 8-21-02 \DWG. PATH: R:\92424-CP15\DDT\DWG\15-SURV01



TOTAL AREA PHASE 15  
**0.5028 AC.**

FOR CURVE INFORMATION SEE SHEETS 1 & 3

DATE	DESCRIPTION
8-21-02	ORIGINAL ISSUE

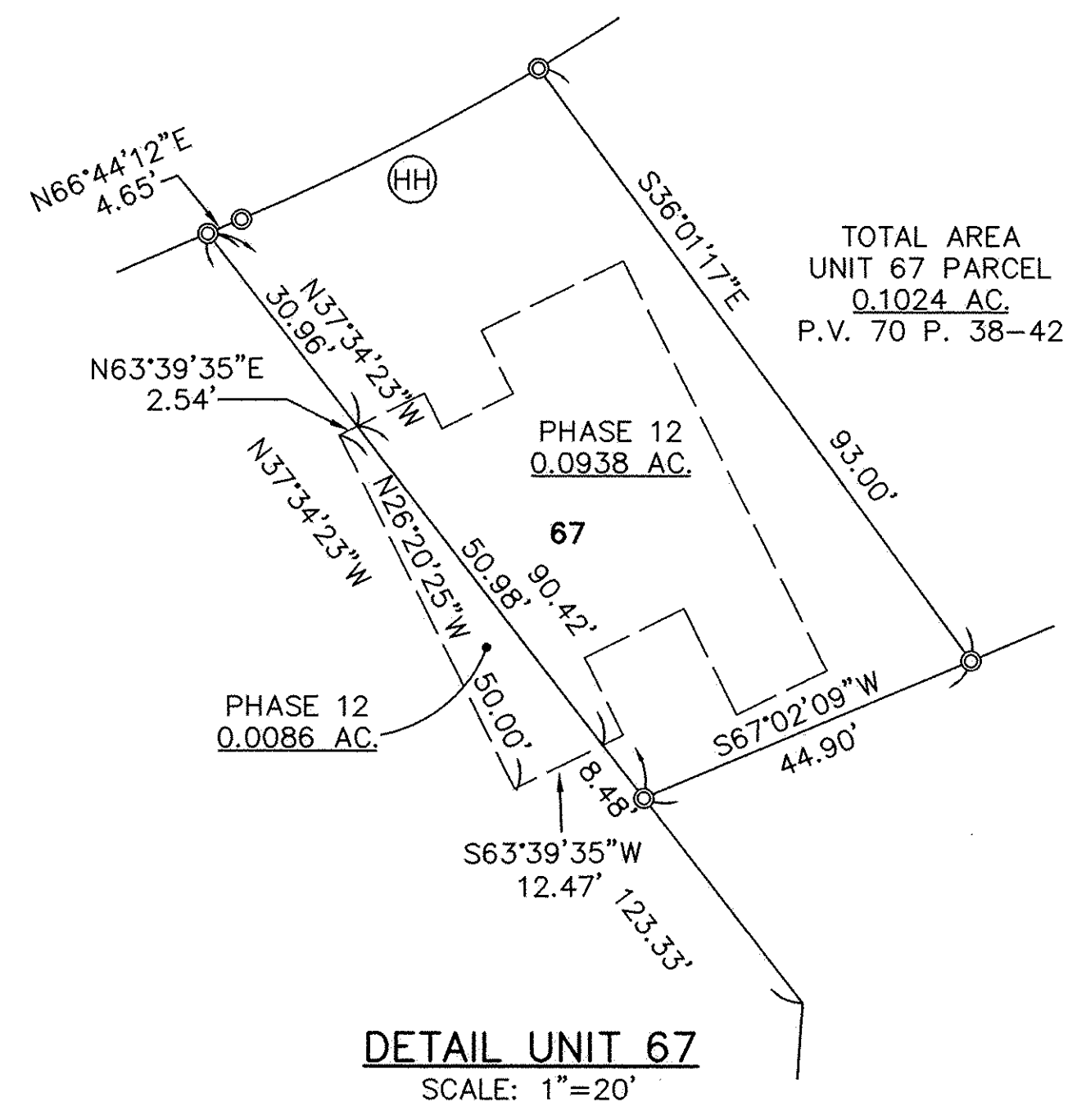
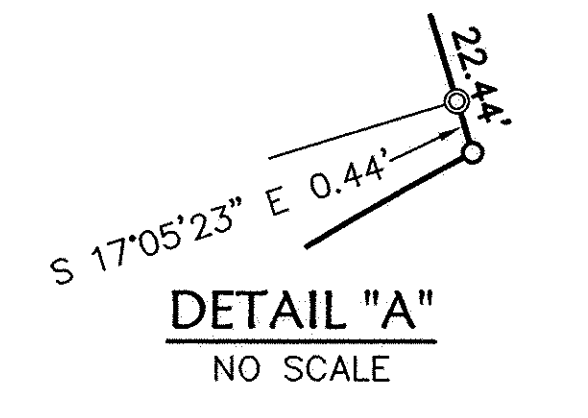
DATE	BY	DESCRIPTION
8-21-02	ABR	
	ABR	
	15-SBR02	
	92424-CP15	

KS ASSOCIATES, INC.  
800 Burns Road, Suite 100  
P.O. Box 509  
Elvira, Ohio 44836  
Phone (440) 365-4730  
Fax (440) 365-4790  
mail@ksassoc.com  
www.ksassoc.com

**STONEHEDGE CONDOMINIUMS**  
**PHASE NO. 15**

PART OF ORIGINAL CARLISLE TOWNSHIP SECTION NO. 5  
CITY OF ELVIRA COUNTY OF LORAIN STATE OF OHIO

SHEET 2	OF 5
JOB NO. 92424-CP15	



OWNERSHIP PERCENTAGES

UNIT NO.	SQ. FT.	ELEV. F.F.	% OWNERSHIP
1	1661.92	756.59	1.3701
2	1602.38	756.59	1.3210
3	1191.64	755.86	0.9824
4	1214.22	755.86	1.0010
5	1602.38	757.42	1.3210
6	1661.92	757.42	1.3701
7	1658.47	756.00	1.3672
8	1661.92	756.00	1.3701
9	1196.28	756.42	0.9862
10	1213.70	756.42	1.0006
11	1196.28	756.76	0.9862
12	1213.70	756.76	1.0006
13	1599.80	754.87	1.3188
14	1393.43	756.44	1.1487
15	1713.47	756.37	1.4126
16	1733.47	756.37	1.4290
17	1658.47	757.40	1.3672
18	1661.92	757.41	1.3701
19	1196.28	755.58	0.9862
20	1393.43	757.01	1.1487
21	1393.43	757.56	1.1487
22	1393.43	754.55	1.1487
23	1196.28	754.53	0.9862
24	1213.70	754.54	1.0006
25	1658.47	758.13	1.3672
26	1661.92	758.13	1.3701
27	1393.43	755.19	1.1487
28	1393.43	754.43	1.1487
29	1393.43	757.07	1.1487
30	1196.28	756.16	0.9862
31	1196.28	755.32	0.9862
32	1393.43	756.45	1.1487
33	1393.43	756.64	1.1487
34	1213.70	753.83	1.0006
35	1393.43	753.61	1.1487
36	1393.43	754.43	1.1487
37	1717.06	754.06	1.4155
38	1717.06	754.20	1.4155
39	1717.06	755.50	1.4155
40	1661.92	756.29	1.3701
41	1658.47	756.29	1.3672
42	1717.06	755.93	1.4155
43	1393.43	754.62	1.1487
44	1717.06	754.78	1.4155
45	1717.06	755.45	1.4155
46	1253.34	754.10	1.0332
47	1705.23	756.45	1.4058
48	1573.19	755.60	1.2969
49	1705.23	755.96	1.4058
50	1705.23	755.61	1.4058
51	1417.96	753.78	1.1689
52	1928.15	756.29	1.5895
53	1928.15	755.93	1.5895
54	1207.46	754.58	0.9954
55	1207.46	754.58	0.9954
56	1393.43	754.54	1.1487
57	1393.43	756.42	1.1487
58	1207.46	754.62	0.9954
59	1717.06	755.09	1.4155
60	1207.46	753.81	0.9954
61	1389.04	755.51	1.1451
62	1207.46	753.98	0.9954
63	1335.42	754.88	1.1009
64	1717.06	755.31	1.4155
65	1520.92	755.63	1.2538
66	1600.25	755.95	1.3192
67	1520.92	755.20	1.2538
68	2053.62	755.47	1.6930
69	1317.98	755.47	1.0865
70	1717.06	752.12	1.4155
71	1520.92	754.64	1.2538
72	1600.25	756.07	1.3192
73	1335.42	755.62	1.1009
74	1520.92	755.40	1.2538
75	1736.17	756.82	1.4313
76	1520.92	756.89	1.2538
77	1736.17	756.16	1.4313
78	1520.92	757.05	1.2538
79	1520.92	754.21	1.2538
80	1520.92	756.02	1.2538
81	1520.92	756.87	1.2538
<b>TOTAL</b>	<b>121,303.18</b>		<b>100.00%</b>

CURVE DATA

A Δ = 38°07'27" R = 25.00' T = 8.64' L = 16.63' C = 16.33' CB = S25°28'22"E	K Δ = 97°04'40" R = 44.00' T = 49.80' L = 74.55' C = 65.95' CB = S44°38'03"E	U Δ = 29°37'44" R = 66.00' T = 17.46' L = 34.13' C = 33.75' CB = N46°02'39"W	EE R=44.00' L=61.06' Tan=36.60' Δ=79°30'36" CH=56.28' CB=N75°53'54"E	MM R=44.00' L=12.25' Tan=6.16' Δ=15°57'06" CH=12.21' CB=S56°22'15"E	UU R=105.00' L=54.39' Tan=27.82' Δ=29°40'41" CH=53.78' CB=N74°10'39"W
B Δ = 80°47'16" R = 130.00' T = 110.61' L = 183.30' C = 168.49' CB = S42°38'06"W	L Δ = 88°45'25" R = 66.00' T = 64.58' L = 102.24' C = 92.32' CB = N48°47'41"W	V Δ = 90°00'00" R = 25.00' T = 25.00' L = 39.27' C = 35.36' CB = S48°54'17"W	FF R=111.00' L=37.75' Tan=19.06' Δ=19°29'03" CH=37.57' CB=N11°59'35"E	NN R=44.00' L=12.03' Tan=6.05' Δ=15°39'39" CH=11.99' CB=N28°18'46"E	VV R=111.00' L=26.42' Tan=13.27' Δ=13°38'20" CH=26.36' CB=N79°43'47"E
C Δ = 24°32'58" R = 190.00' T = 41.34' L = 81.41' C = 80.79' CB = N14°30'57"E	M Δ = 08°19'15" R = 66.00' T = 4.80' L = 9.59' C = 9.58' CB = N00°15'21"W	W Δ = 111°07'22" R = 44.00' T = 64.17' L = 85.34' C = 72.58' CB = S76°02'37"W	GG R=89.00' L=62.53' Tan=32.62' Δ=40°15'29" CH=61.26' CB=N22°22'47"E	OO R=66.00' L=19.04' Tan=9.59' Δ=16°31'41" CH=18.97' CB=S33°46'12"E	WW R=25.00' L=34.59' Tan=20.71' Δ=79°15'49" CH=31.89' CB=N22°32'32"E
D Δ = 40°05'31" R = 25.00' T = 9.12' L = 17.49' C = 17.14' CB = N13°39'13"E	N Δ = 20°15'21" R = 190.00' T = 33.94' L = 67.17' C = 66.82' CB = N72°54'03"E	X Δ = 110°53'45" R = 44.00' T = 63.90' L = 85.16' C = 72.48' CB = N79°51'52"E	HH R=311.00' L=42.19' Tan=21.13' Δ=7°46'24" CH=42.16' CB=N62°51'00"E	PP R=89.00' L=47.22' Tan=24.18' Δ=30°24'05" CH=46.67' CB=N57°42'35"E	
E Δ = 53°07'38" R = 25.00' T = 12.50' L = 23.18' C = 22.36' CB = N60°15'48"E	O Δ = 56°14'17" R = 190.00' T = 101.53' L = 186.49' C = 179.10' CB = N54°54'35"E	Y Δ = 43°03'41" R = 25.00' T = 9.86' L = 18.79' C = 18.35' CB = S66°13'06"E	II R=44.00' L=71.36' Tan=46.30' Δ=92°55'21" CH=63.79' CB=S42°33'20"E	QQ R=66.00' L=54.12' Tan=28.69' Δ=46°58'57" CH=52.62' CB=S65°31'31"E	
F Δ = 14°39'14" R = 200.00' T = 25.72' L = 51.15' C = 51.01' CB = N16°05'46"E	P Δ = 32°18'52" R = 66.00' T = 19.12' L = 37.22' C = 36.73' CB = N77°00'57"W	Z Δ = 71°46'07" R = 29.31' T = 18.09' L = 31.31' C = 29.31' CB = S56°22'00"W	JJ R=89.00' L=19.30' Tan=9.69' Δ=12°25'38" CH=19.27' CB=N84°46'11"E	RR R=89.00' L=109.76' Tan=63.08' Δ=70°39'34" CH=102.93' CB=N37°34'50"E	
G Δ = 26°29'29" R = 55.00' T = 12.95' L = 25.43' C = 25.20' CB = N76°45'16"W	Q Δ = 26°48'49" R = 66.00' T = 15.73' L = 30.89' C = 30.61' CB = N17°49'23"W	AA Δ = 51°10'38" R = 87.45' T = 28.19' L = 41.88' C = 78.11' CB = S21°11'35"E	KK R=111.00' L=35.01' Tan=17.65' Δ=18°04'23" CH=34.87' CB=S81°56'49"W	SS R=111.00' L=8.59' Tan=4.30' Δ=4°26'03" CH=8.59' CB=N88°45'59"E	
H Δ = 8°47'02" R = 111.00' T = 8.53' L = 17.02' C = 17.00' CB = S82°26'06"W	R Δ = 22°39'54" R = 190.00' T = 38.08' L = 75.16' C = 74.67' CB = N38°07'23"E	BB Δ = 58°56'55" R = 71.00' T = 40.13' L = 73.05' C = 69.87' CB = N25°34'00"W	LL R=66.00' L=73.16' Tan=40.85' Δ=63°30'38" CH=69.47' CB=N57°15'41"W	TT R=105.00' L=20.00' Tan=10.03' Δ=10°54'51" CH=19.97' CB=N53°52'53"W	
I Δ = 0°51'42" R = 589.00' T = 4.43' L = 8.86' C = 8.86' CB = N78°28'26"E	S Δ = 13°19'02" R = 190.00' T = 22.18' L = 44.16' C = 44.06' CB = N56°06'51"E	CC Δ = 33°20'33" R = 87.45' T = 28.19' L = 50.89' C = 50.18' CB = S12°16'32"E			
J Δ = 2°48'19" R = 589.00' T = 14.42' L = 28.84' C = 28.84' CB = N85°25'27"E	T Δ = 13°46'24" R = 190.00' T = 22.95' L = 45.67' C = 45.56' CB = N69°39'34"E	DD Δ = 17°50'05" R = 87.45' T = 13.72' L = 27.22' C = 27.11' CB = S37°51'51"E			

DATE: 8-21-02 \DWG. PATH: R:\92424-CP15\DDT\DWG\15-TABLO1

REVISIONS	DATE	DESCRIPTION	BY
	8-21-02	ORIGINAL ISSUE	ABR

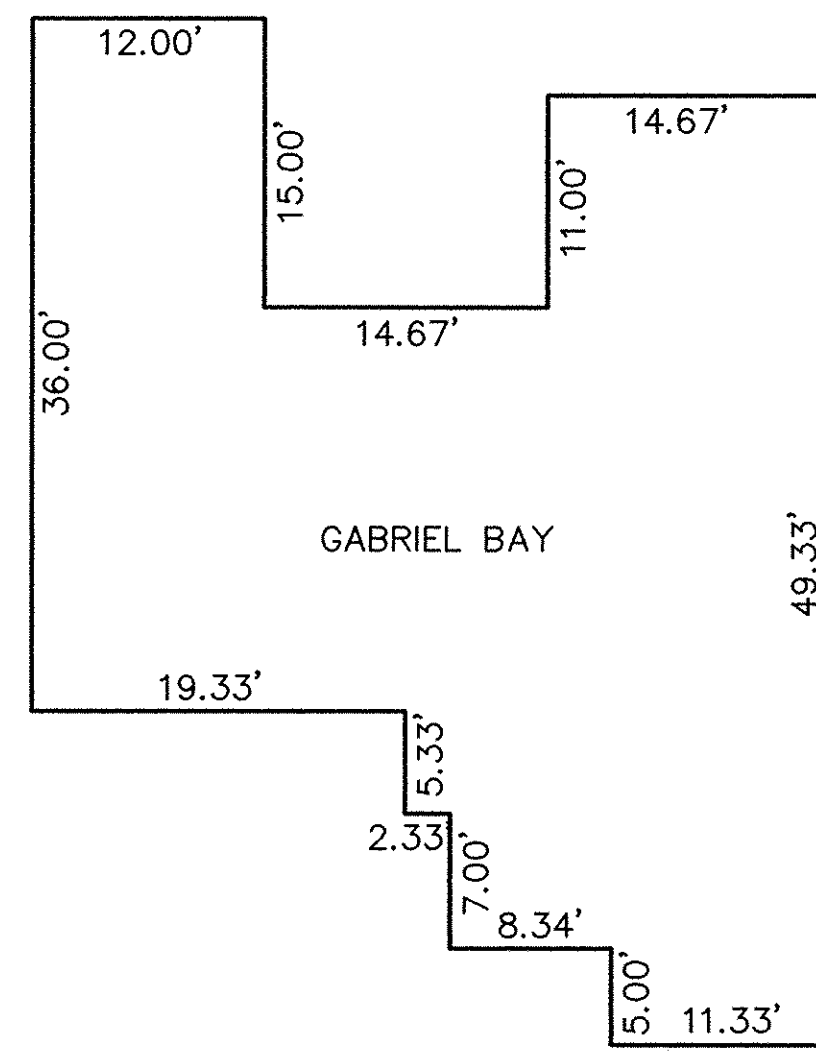


KS ASSOCIATES, INC.  
260 Burns Road, Suite 100  
P.O. Box 569  
Elyria, Ohio 44036  
Phone (440) 365-4730  
Fax (440) 365-4790  
mailroom@ksassoc.com  
www.ksassoc.com

**STONEHEDGE CONDOMINIUMS  
PHASE NO. 15**

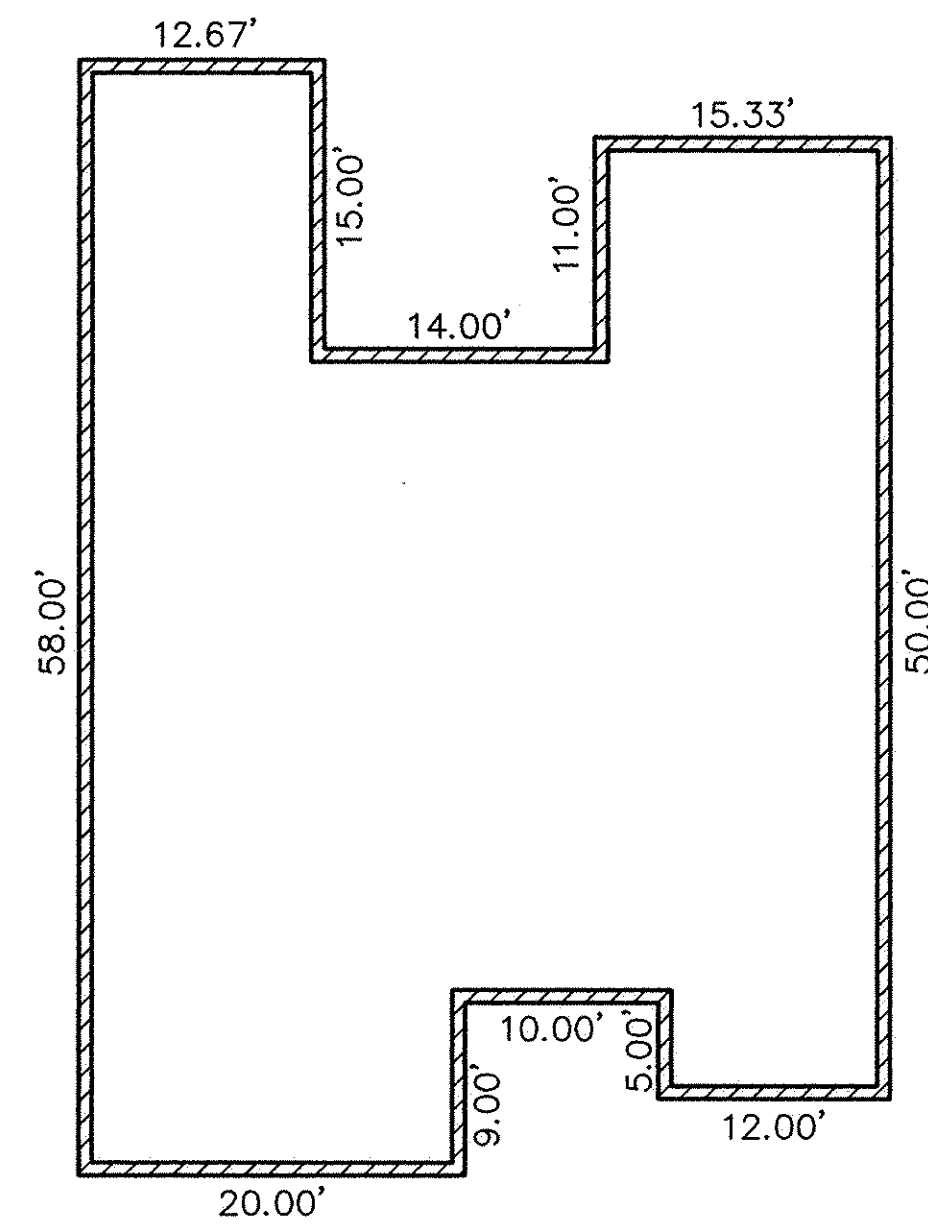
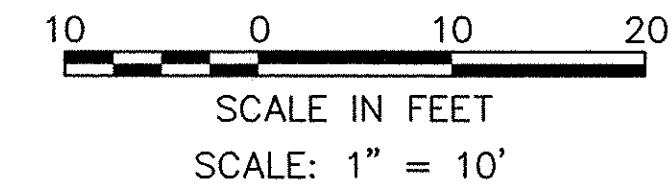
PART OF ORIGINAL TOWNSHIP SECTION NO. 5  
CITY OF ELYRIA COUNTY OF LORAIN STATE OF OHIO

SHEET <b>3</b>	OF <b>5</b>
JOB NO. <b>92424-CP15</b>	



NOTE: TYPICAL FOR UNITS 79, 80 & 81  
BUT SUBJECT TO CHANGES IN ORIENTATION

**FLOOR PLANS**  
(INTERIOR DIMENSIONS)



**FOUNDATION PLANS**  
(EXTERIOR DIMENSIONS)

DATE: 8-21-02 \DWG. PATH: R:\92424-CP15\LODT\DWG\15-PLAN01

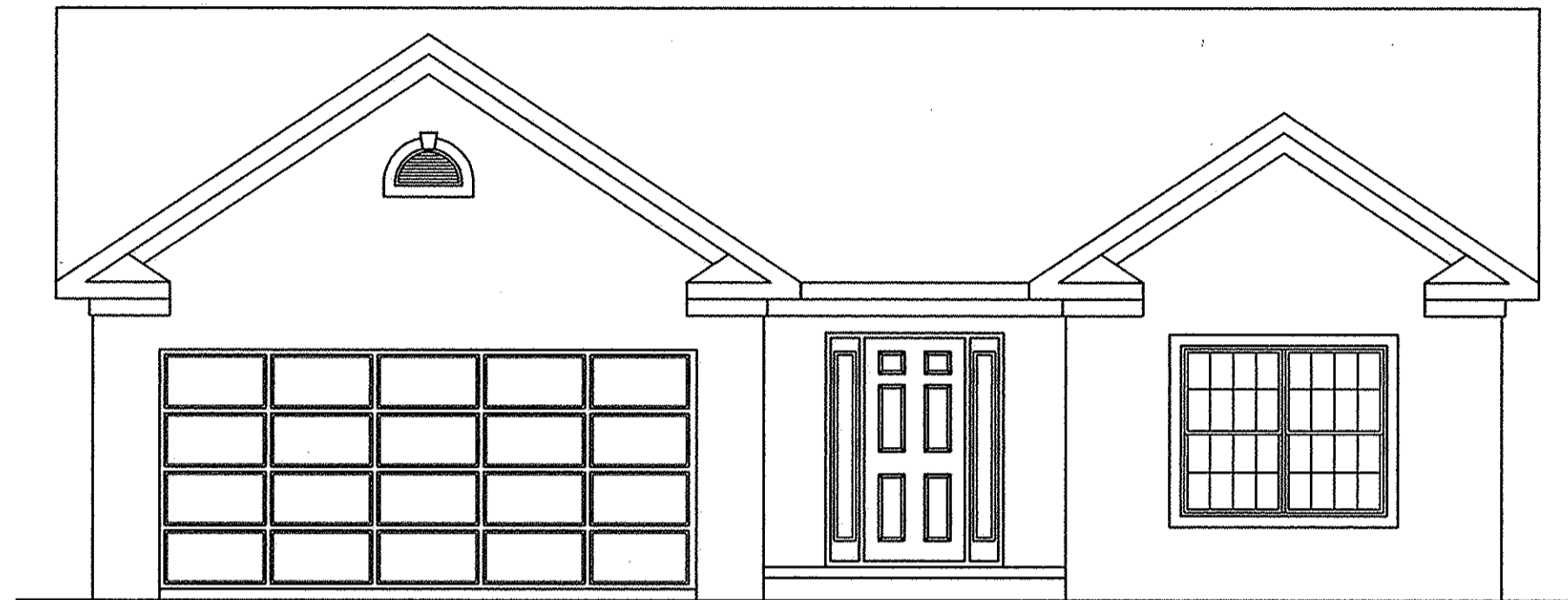
REVISIONS	DATE	DESCRIPTION	BY
	8-21-02	ORIGINAL ISSUE	ABR

**KS ASSOCIATES**  
 KS ASSOCIATES, INC.  
 260 Burns Road, Suite 100  
 P.O. Box 569  
 Elyria, Ohio 44036  
 Phone (440) 365-4730  
 Fax (440) 365-4790  
 mailroom@ksassoc.com  
 www.ksassoc.com

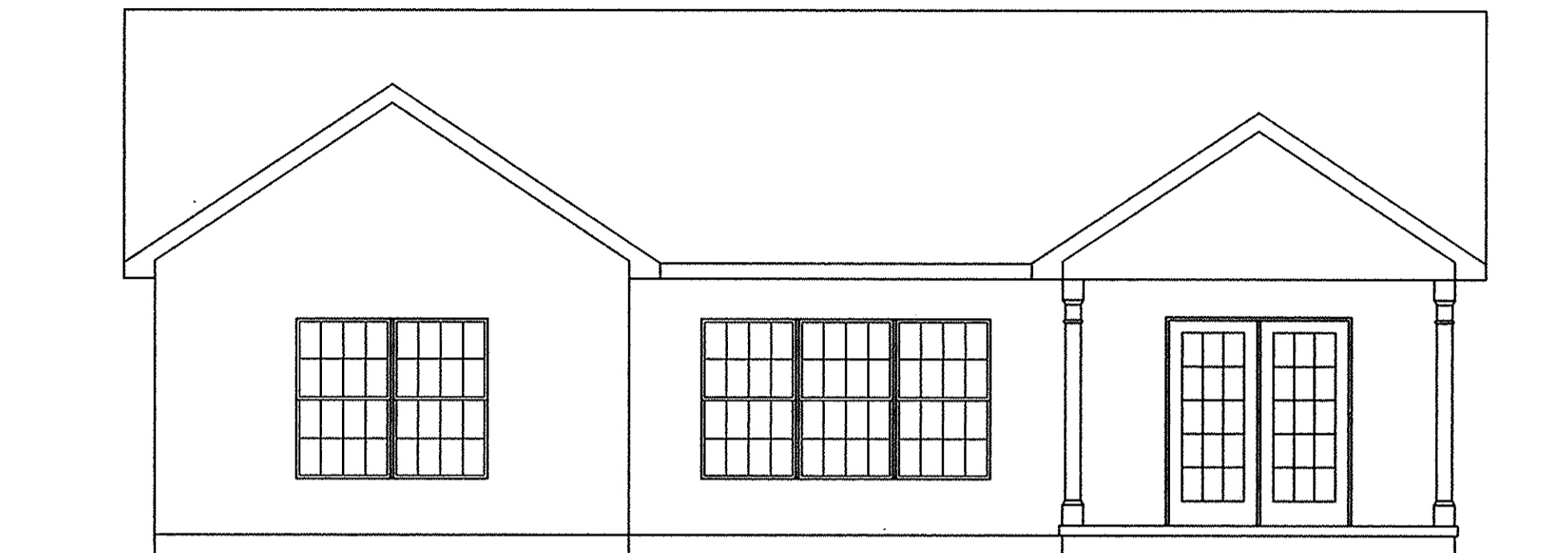
**STONEHEDGE CONDOMINIUMS  
PHASE NO. 15**

PART OF ORIGINAL TOWNSHIP SECTION NO. 5  
CITY OF ELYRIA COUNTY OF LORAIN STATE OF OHIO

SHEET  
**4** OF  
**5**  
JOB NO.  
**92424-CP15**

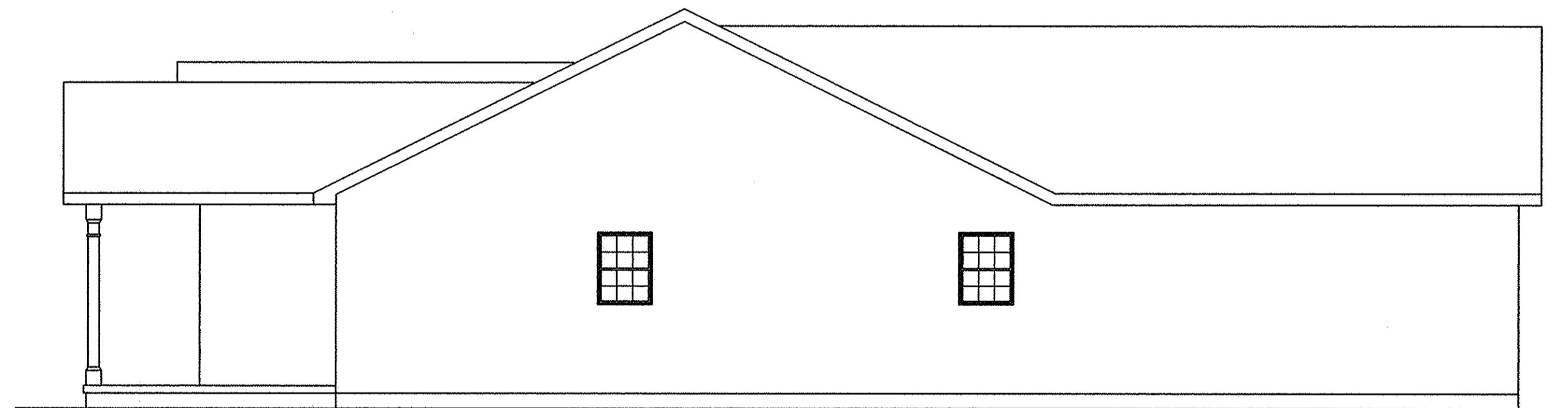


FRONT ELEVATION

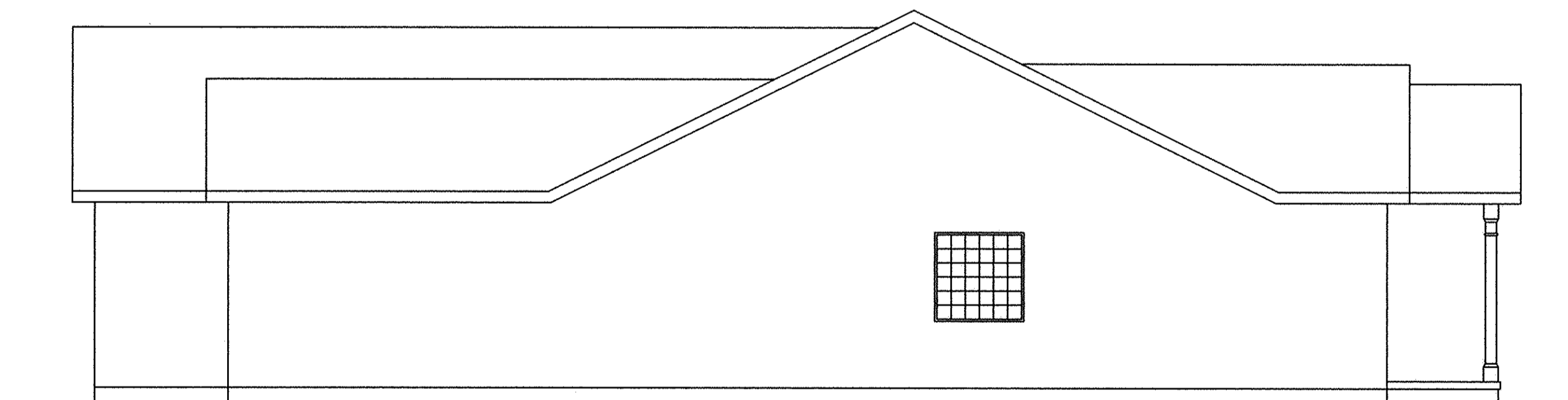


REAR ELEVATION

NOTE: ELEVATION VIEWS SHOWN ARE TYPICAL FOR OVERALL SITE. INDIVIDUAL VARIATIONS SUBJECT TO GARAGE ORIENTATION, UNIT REVERSAL, SINGLE UNIT CONSTRUCTION, ETC. BUILDINGS ARE UNDER CONSTRUCTION.



LEFT SIDE ELEVATION



RIGHT SIDE ELEVATION

DATE: 8-21-02 DWG. PATH: R:\92424-CP15\LDOT\DWG\15-ELEV01

REVISIONS	DATE	DESCRIPTION	BY
	8-21-02	ORIGINAL ISSUE	ABR

**KS ASSOCIATES**  
 KS ASSOCIATES, INC.  
 260 Burns Road, Suite 100  
 P.O. Box 569  
 Elyria, Ohio 44036  
 Phone (440) 365-4730  
 Fax (440) 365-4790  
 mailroom@ksassoc.com  
 www.ksassoc.com

**STONEHEDGE CONDOMINIUMS  
PHASE NO. 15**

ELEVATION VIEWS

SHEET  
5 OF  
5

JOB NO.  
92424-CP15