

VILLAS OF AVALON PHASE NO. 1

PART OF ORIGINAL RIDGEVILLE TOWNSHIP LOT NUMBER 43
NOW IN
CITY OF NORTH RIDGEVILLE, COUNTY OF LORAIN, STATE OF OHIO

TRANSFERRED
IN COMPLIANCE WITH
OHIO REV. CODE
AUG 29 2002
MARK R. STEWART
LORAIN COUNTY AUDITOR

OWNER'S CERTIFICATE

SITUATED IN RIDGEVILLE TOWNSHIP, COUNTY OF LORAIN, STATE OF OHIO, AND BEING PART OF ORIGINAL RIDGEVILLE TOWNSHIP LOT NUMBER 43, CONTAINING 14.0490 ACRES.

THE UNDERSIGNED, OSTER CONSTRUCTION, INC. HEREBY CERTIFIES THE ATTACHED PLAT CORRECTLY REPRESENTS ITS "VILLAS OF AVALON PHASE NO. 1" A SUBDIVISION OF LOTS 1 TO 37 INCLUSIVE, DOES HEREBY ACKNOWLEDGE THIS PLAT OF SAME AND DEDICATES TO PUBLIC USE AS SUCH. THE EASEMENTS AS SHOWN HEREON AND DEDICATES TO THE PRIVATE USE OF THE LOT OWNERS THE STREETS AS SHOWN HEREON (BLOCKS A & BLOCK B) AND THE COMMON AREAS (BLOCKS C, D & E).

THE UNDERSIGNED FURTHER AGREES THAT ANY USE OR IMPROVEMENTS MADE ON THIS LAND SHALL BE IN CONFORMITY WITH ALL EXISTING PLATTING, HEALTH OR OTHER LAWFUL RULES AND REGULATIONS INCLUDING THE APPLICABLE OFF-STREET PARKING AND LOADING REQUIREMENTS OF THE CITY OF NORTH RIDGEVILLE, OHIO, FOR THE BENEFIT OF THEMSELVES AND ALL OTHER SUBSEQUENT PARTIES TAKING TITLE FROM, UNDER OR THROUGH THE UNDERSIGNED.

THE DIMENSIONS OF THE LOTS AND STREET ARE SHOWN ON THE PLAT IN FEET AND DECIMAL PARTS THEREOF. EASEMENTS ARE RESERVED WHERE INDICATED ON THE PLAT FOR PUBLIC UTILITY PURPOSES ABOVE OR BENEATH THE GROUND.

IN WITNESS WHEREOF THE UNDERSIGNED HAVE HEREUNTO SET THEIR HAND THIS 23 DAY OF May, 2002.

OSTER CONSTRUCTION, INC.
Tom Oster
TOM OSTER, PRESIDENT

WITNESS *John M. ...*
J.M.

WITNESS *John ...*
John ...

NOTARY PUBLIC

STATE OF OHIO
LORAIN COUNTY

BEFORE ME, A NOTARY PUBLIC, IN AND FOR SAID COUNTY AND STATE DID PERSONALLY APPEAR THE ABOVE SIGNED OFFICER OF OSTER CONSTRUCTION, INC., WHO ACKNOWLEDGED THE SIGNING OF THIS PLAT TO BE HIS VOLUNTARY ACT AND DEED FOR THE PURPOSES THEREIN EXPRESSED. IN WITNESS WHEREOF I HAVE HEREUNTO SET MY HAND AND OFFICIAL SEAL THIS 23 DAY OF May, 2002.



David L. Elwell
NOTARY PUBLIC
MY COMMISSION EXPIRES: _____

MORTGAGEE'S CERTIFICATE

THIS IS TO CERTIFY THAT THE UNDERSIGNED OFFICERS OF Ohio Savings Bank MORTGAGEE OF LANDS EMBRACED WITHIN THIS PLAT OF VILLAS OF AVALON PHASE NO. 1 HEREBY ACCEPT THE SAME TO BE CORRECT AND DEDICATE TO PUBLIC USE EASEMENTS AS SHOWN HEREON AND DEDICATED TO THE PRIVATE USE OF THE LOT OWNERS THE STREETS AS SHOWN HEREON

BY: *Steven S. ...*
TITLE: Vice President

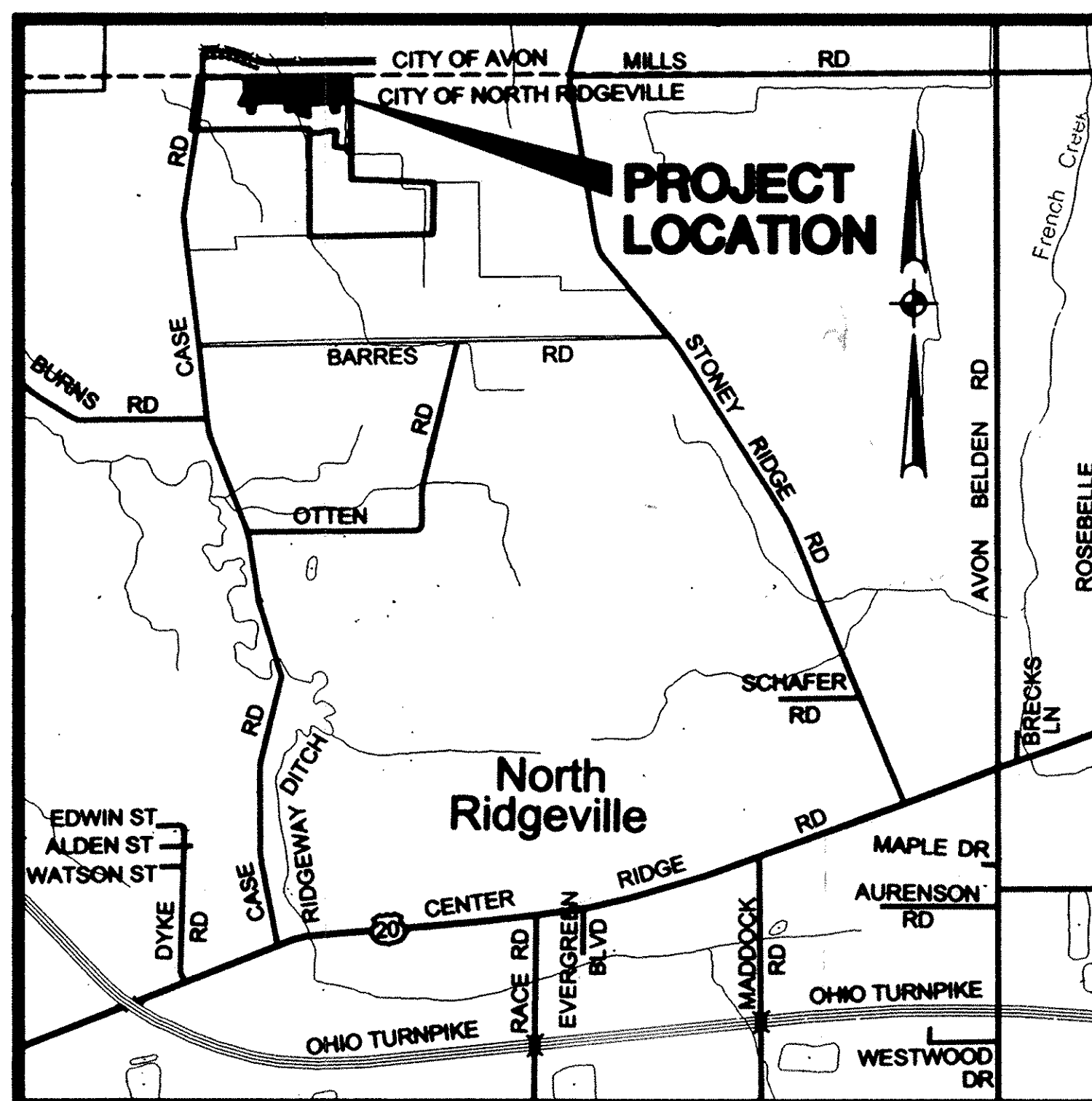
NOTARY PUBLIC

STATE OF OHIO
LORAIN COUNTY

BEFORE ME, A NOTARY PUBLIC, IN AND FOR SAID COUNTY AND STATE DID PERSONALLY APPEAR THE ABOVE SIGNED OFFICERS OF THE MORTGAGEE, WHO ACKNOWLEDGED THE SIGNING OF THIS PLAT TO BE THEIR VOLUNTARY ACT AND DEED FOR THE PURPOSES THEREIN EXPRESSED. IN WITNESS WHEREOF I HAVE HEREUNTO SET MY HAND AND OFFICIAL SEAL THIS 19 DAY OF July, 2002.



Kelly M. ...
NOTARY PUBLIC
MY COMMISSION EXPIRES: 04/24/06



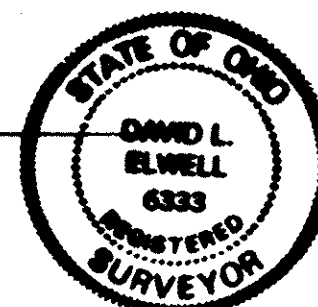
VICINITY MAP SCALE: 1"=2000'

SURVEYOR'S CERTIFICATE

THIS IS TO CERTIFY THAT AT THE REQUEST OF THE OWNERS I HAVE SURVEYED AND PLATTED VILLAS OF AVALON PHASE NO. 1 AS SHOWN HEREON, EMBRACING 14.0490 ACRES OF LAND IN RIDGEVILLE TOWNSHIP ORIGINAL LOT NUMBER 43, CITY OF NORTH RIDGEVILLE, COUNTY OF LORAIN, STATE OF OHIO OF WHICH 1.4419 ACRES LIE IN PRIVATE STREET DEDICATION, 10.2801 ACRES LIE IN COMMON AREA, AND 2.3270 ACRES LIE IN LOTS NUMBERED 1 TO 37 INCLUSIVE.

IRON PIPES WERE FOUND AT ALL POINTS INDICATED THUSLY \odot AND CAPPED IRON PINS LABELED KS ASSOC INC PROP MARKER WERE SET AT ALL POINTS INDICATED AS \circ . DISTANCES ARE GIVEN IN FEET AND DECIMAL PARTS THEREOF. BEARINGS ARE BASED ON OHIO STATE PLANE, NORTH ZONE, NAD83 (1995). DIMENSION ON CURVES ARE ARC MEASUREMENTS. THE PLAT PRESENTS A SURVEY IN WHICH THE TRAVERSE OF THE EXTERIOR BOUNDARIES OF THE TRACT AND OF EACH BLOCK WHEN COMPUTED FROM FIELD MEASUREMENTS CLOSED WITHIN A LIMIT OF ERROR OF ONE FOOT IN TEN THOUSAND BEFORE BALANCING THE SURVEY. ALL OF WHICH I CERTIFY TO BE CORRECT TO THE BEST OF MY KNOWLEDGE AND BELIEF.

David L. Elwell
DAVID L. ELWELL, REGISTERED SURVEYOR NO. 6333



LEGEND

- \odot INDICATES IRON PIN FOUND
 - \circ INDICATES IRON PIN SET
 - \otimes INDICATES MONUMENT FOUND
 - \blacksquare INDICATES MONUMENT SET
- AREAS IN LOTS - 2.3270 AC.
AREA IN BLOCKS - 11.7220 AC.
TOTAL AREA - 14.0490 AC.

UTILITY EASEMENT

WE THE UNDERSIGNED OWNER OF THE WITHIN PLATTED LAND, DO HEREBY GRANT UNTO THE COLUMBIA GAS OF OHIO, ALLTEL CORPORATION, THE ILLUMINATING COMPANY, AT&T BROAD BAND, ALL OHIO CORPORATIONS, THEIR SUCCESSORS AND ASSIGNS (HEREIN AFTER REFERRED TO AS GRANTEE) A PERMANENT RIGHT-OF-WAY AND EASEMENT TWELVE (12) FEET IN WIDTH, UNDER, OVER, AND THROUGH ALL SUBLOTS AND ALL LANDS OWNED BY THE GRANTOR SHOWN HEREON AND PARALLEL WITH AND CONTIGUOUS TO THE PUBLIC THOROUGHFARES, AND ALSO UPON LANDS AS DEPICTED HEREON TO CONSTRUCT, PLACE, OPERATE, MAINTAIN, REPAIR, RECONSTRUCT, RELOCATE, RENEW, SUPPLEMENT, OR REMOVE SUCH UNDERGROUND ELECTRIC, AND COMMUNICATIONS CABLES, DUCTS, CONDUITS, PIPES, GAS PIPE LINES, SURFACE OF BELOW GROUND MOUNTED TRANSFORMERS AND PEDESTALS, CONCRETE PADS AND OTHER FACILITIES AS ARE DEEMED NECESSARY OR CONVENIENT BY THE GRANTEE FOR DISTRIBUTING, TRANSPORTING, AND TRANSMITTING ELECTRICITY, GAS, AND COMMUNICATION SIGNALS FOR PUBLIC AND PRIVATE USE AT SUCH LOCATION AS THE GRANTEE MAY DETERMINE UPON, WITHIN AND ACROSS SAID EASEMENT PREMISES. SAID EASEMENT RIGHTS SHALL INCLUDE THE RIGHT, WITHOUT LIABILITY THEREFORE, TO REMOVE TREES AND LANDSCAPING, INCLUDING LAWNS WITHIN AND WITHOUT SAID EASEMENT PREMISES WHICH MAY INTERFERE WITH THE INSTALLATION, MAINTENANCE, REPAIR OR OPERATION OF SAID ELECTRIC, GAS, AND COMMUNICATIONS FACILITIES THE RIGHT TO INSTALL, REPAIR, AUGMENT AND MAINTAIN SERVICE CABLES AND PIPE LINES OUTSIDE THE ABOVE DESCRIBED EASEMENT PREMISES OF THE RIGHT OF ACCESS, INGRESS AND EGRESS TO AND FROM ANY OF THE WITHIN DESCRIBED PREMISES FOR EXERCISING ANY OF THE PURPOSES OF THIS RIGHT-OF-WAY AND EASEMENT GRANT.

GRANTOR:
OSTER CONSTRUCTION, INC.
BY: *Tom Oster*
TOM OSTER, PRESIDENT

GRANTEES:
Thomas ...
COLUMBIA GAS OF OHIO, INC.
Robert ...
ALLTEL CORPORATION
Tom ...
THE ILLUMINATING COMPANY
AT&T BROAD BAND

COUNTY AUDITOR

TRANSFERRED THIS _____ DAY OF _____
LORAIN COUNTY AUDITOR _____ DATE _____

COUNTY RECORDER

FILED FOR RECORD THIS DAY Aug 30, 2002 AT 9:11 AM. RECORDED THIS 30 DAY OF August, 2002 IN PLAT BOOK 72
PAGE NO. 61, 62, 63, 64, 65, 66, 67, 68
BY: *Prissy ...*
LORAIN COUNTY RECORDER _____ DATE _____

DATE	DATE	DESCRIPTION	BY
08-15-01			
DRAWN BY: DAM			
CH'D BY:			
DWG. NAME: 1-PLATS			
PATH: R:\01221			
F.B.:			

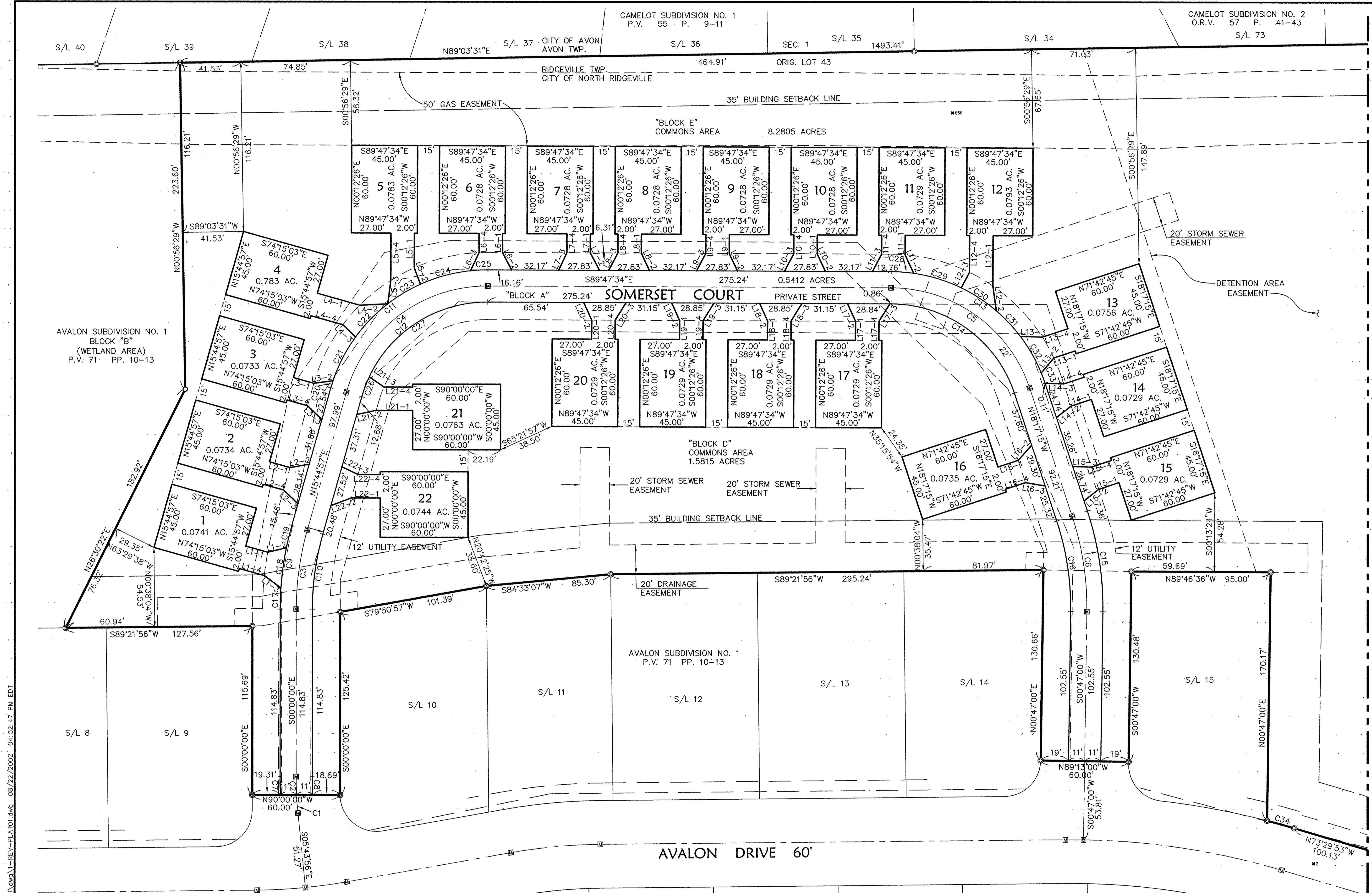
VILLAS OF AVALON PHASE NO.1
CITY OF NORTH RIDGEVILLE, LORAIN COUNTY, OHIO
RECORD PLAT
TITLE SHEET

SHEET 1 OF 6
JOB NO. 01221

Box: millennium title

Tax Map Dept. Copy #02-00465

72/61



R:\01000\01221\1d1\control\dwg\1-REV-PLAT01.dwg 08/22/2002 04:32:47 PM EDT

CAMELOT SUBDIVISION NO. 1
P.V. 55 P. 9-11

CAMELOT SUBDIVISION NO. 2
O.R.V. 57 P. 41-43

S/L 40 S/L 39 S/L 38 S/L 37 CITY OF AVON AVON TWP. S/L 36 SEC. 1 S/L 35 1493.41' S/L 34

RIDGEVILLE TWP.
CITY OF NORTH RIDGEVILLE

"BLOCK E"
COMMONS AREA
8.2805 ACRES

"BLOCK A"
SOMERSET COURT
PRIVATE STREET
0.5412 ACRES

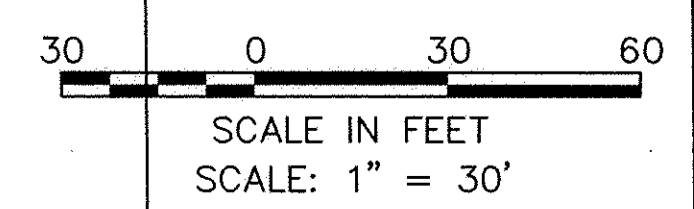
"BLOCK D"
COMMONS AREA
1.5815 ACRES

AVALON SUBDIVISION NO. 1
BLOCK "B"
(WETLAND AREA)
P.V. 71 PP. 10-13

AVALON SUBDIVISION NO. 1
P.V. 71 PP. 10-13

LEGEND

- IRON PIPE FOUND
- IRON PIPE SET



NOTES:
1. FOR EASEMENT LOCATIONS SEE SHEET 4.
2. FOR LINE TABLES SEE SHEET 5.

SEE SHEET 3 FOR MATCHLINE

DATE	DESCRIPTION

REVISIONS

DATE: _____ DRAWN BY: UMB

CH'D BY: _____ NAME: 1-REV-PLAT01

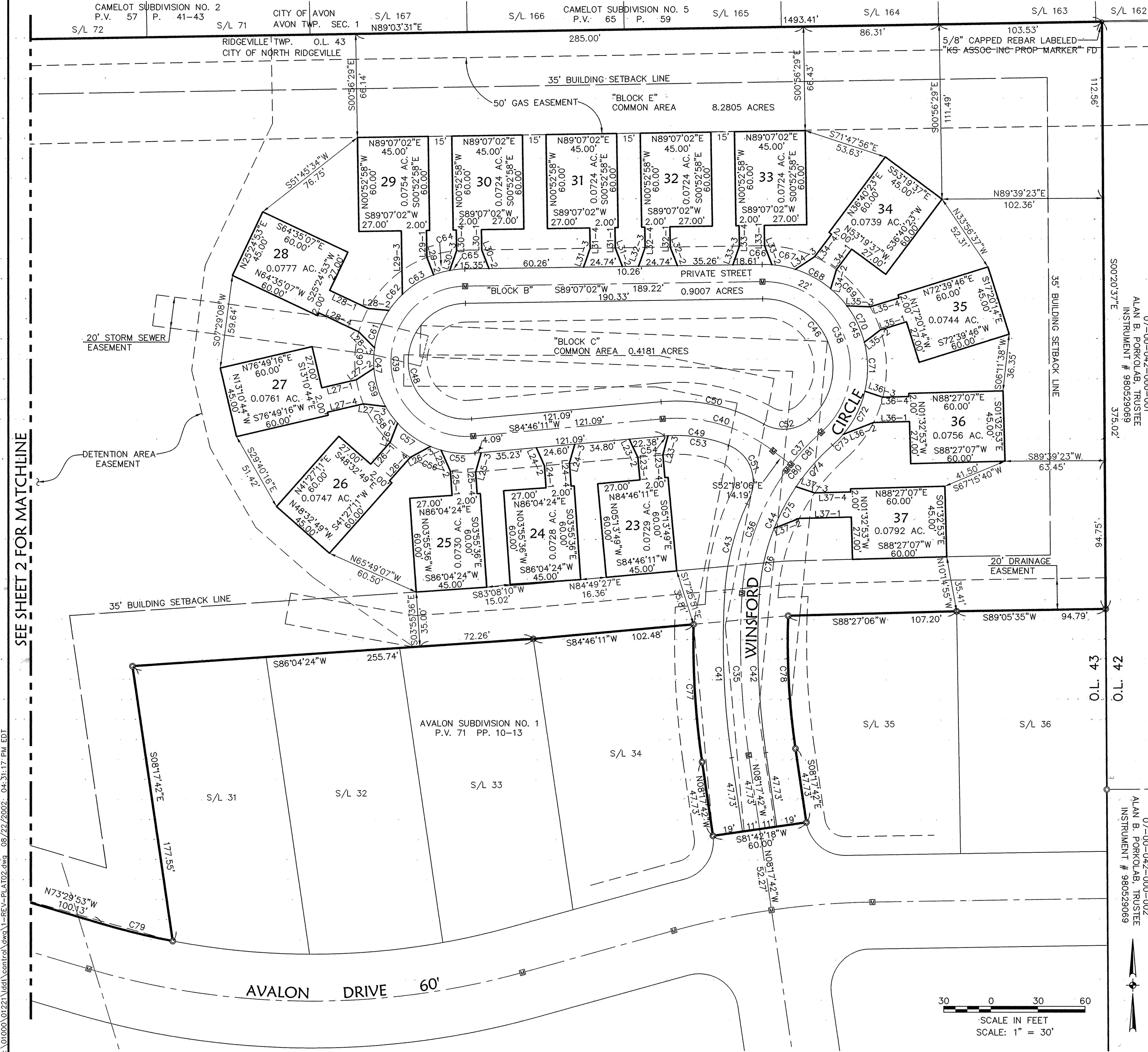
PATH: R:\01221

F.B. _____

KS ASSOCIATES, INC.
860 Broad Road, Suite 100
P.O. Box 599
Elyria, Ohio 44035
Phone (440) 365-4730
Fax (440) 365-4790
mailto:info@ksassoc.com
www.ksassoc.com

RECORD PLAT
VILLAS OF AVALON PHASE NO. 1
CITY OF NORTH RIDGEVILLE, LORAIN COUNTY, OHIO

SHEET 2	OF 6
JOB NO. 01221	



CURVE TABLE						
CURVE	LENGTH	RADIUS	TANGENT	DELTA	CHORD	BEARING
C1	12.49	250.15	6.24	2°51'36"	12.49	S04°18'02"E
C2	12.52	250.15	6.26	2°52'07"	12.52	S01°26'10"E
C3	54.97	200.00	27.66	15°44'57"	54.80	S07°52'28"W
C4	129.95	100.00	75.98	74°27'30"	121.00	S52°58'41"W
C5	124.80	100.00	72.00	71°30'19"	116.86	N54°02'24"W
C6	66.57	200.00	33.60	19°04'15"	66.26	N08°45'08"W
C7	12.52	261.00	6.26	2°44'57"	12.52	S01°22'29"E
C8	12.52	239.00	6.26	3°00'09"	12.52	S01°30'05"E
C9	58.00	211.00	29.18	15°44'57"	57.82	S07°52'28"W
C10	51.95	189.00	26.14	15°44'57"	51.79	S07°52'28"W
C11	144.25	111.00	84.34	74°27'30"	134.31	S52°58'41"W
C12	115.66	89.00	67.63	74°27'30"	107.69	S52°58'41"W
C13	138.53	111.00	79.92	71°30'19"	129.71	N54°02'24"W
C14	111.07	89.00	64.08	71°30'19"	104.00	N54°02'24"W
C15	70.23	211.00	35.44	19°04'15"	69.91	N08°45'08"W
C16	62.91	189.00	31.75	19°04'15"	62.62	N08°45'08"W
C17	14.41	211.00	7.21	3°54'44"	14.40	S01°57'22"W
C18	27.89	211.00	13.97	7°34'27"	27.87	N07°41'57"E
C19	15.70	211.00	7.85	4°15'46"	15.70	N13°37'03"E
C20	5.12	111.00	2.56	2°38'40"	5.12	S17°04'17"W
C21	33.84	111.00	17.05	17°28'10"	33.71	S27°07'42"W
C22	31.71	111.00	15.96	16°22'07"	31.60	N44°02'51"E
C23	26.09	111.00	13.10	13°27'59"	26.03	N58°57'55"E
C24	35.56	111.00	17.93	18°21'24"	35.41	S74°52'36"W
C25	11.92	111.00	5.97	6°09'08"	11.91	N87°07'52"E
C26	14.52	89.00	7.28	9°20'48"	14.50	N20°25'21"E
C27	101.14	89.00	56.82	65°06'42"	95.79	S57°39'06"W
C28	15.45	111.00	7.74	7°58'34"	15.44	S85°48'17"E
C29	34.04	111.00	17.16	17°34'23"	33.91	N73°01'48"W
C30	28.69	111.00	14.42	14°48'31"	28.61	S56°50'21"E
C31	24.08	111.00	12.09	12°25'43"	24.03	N43°13'14"W
C32	28.79	111.00	14.48	14°51'41"	28.71	S29°34'32"E
C33	7.47	111.00	3.74	3°51'26"	7.47	N20°12'58"W
C34	19.21	530.00	9.61	2°04'37"	19.21	N74°32'12"W
C35	103.77	500.00	52.07	11°53'28"	103.58	S02°20'58"E
C36	84.79	150.00	43.56	32°23'18"	83.67	S19°47'25"W
C37	32.77	150.00	16.45	12°31'02"	32.70	S42°14'35"W
C38	133.80	55.00	148.62	139°23'04"	103.16	N21°11'26"W
C39	154.44	48.00	1264.61	184°20'51"	95.93	S03°03'23"E
C40	74.92	100.00	39.32	42°55'43"	73.18	N73°45'57"W
C41	106.05	511.00	53.22	11°53'28"	105.86	S02°20'58"E
C42	101.49	489.00	50.93	11°53'28"	101.31	S02°20'58"E
C43	62.24	161.00	31.51	22°09'01"	61.86	S14°40'17"W
C44	108.94	139.00	57.44	44°54'20"	106.17	S26°02'56"W
C45	160.56	66.00	178.35	139°23'04"	123.80	N21°11'26"W
C46	107.35	44.00	120.21	139°47'33"	82.64	N20°59'11"W
C47	189.83	59.00	1554.42	184°20'51"	117.92	S03°03'23"E
C48	119.05	37.00	974.80	184°20'51"	73.95	S03°03'23"E
C49	41.63	89.00	21.20	26°47'59"	41.25	N81°49'49"W
C50	67.99	111.00	35.10	35°05'35"	66.93	N77°41'01"W
C51	41.09	25.00	26.89	94°10'36"	36.62	N21°20'31"W
C52	30.96	25.00	17.82	70°57'12"	29.02	N84°23'11"E
C53	39.26	89.00	19.96	25°16'33"	38.94	N81°04'06"W
C54	2.37	89.00	1.18	1°31'26"	2.37	N85°31'55"E
C55	21.79	59.00	11.02	21°09'38"	21.67	N84°39'00"W
C56	7.09	59.00	3.55	6°53'20"	7.09	S70°37'30"E
C57	25.84	59.00	13.13	25°05'34"	25.63	N54°38'03"W
C58	13.16	59.00	6.61	12°46'59"	13.14	S35°41'47"E
C59	25.70	59.00	13.05	24°57'10"	25.49	N16°49'42"W
C60	13.11	59.00	6.58	12°43'42"	13.08	S02°00'44"W
C61	25.74	59.00	13.08	24°59'45"	25.54	N20°52'27"E
C62	13.42	59.00	6.74	13°01'52"	13.39	S39°53'15"W
C63	23.67	59.00	12.00	22°59'03"	23.51	N57°53'42"E
C64	10.66	59.00	5.35	10°21'15"	10.65	S74°33'51"W
C65	9.66	59.00	4.84	9°22'34"	9.64	N84°25'45"E
C66	6.23	66.00	3.12	5°24'29"	6.23	S88°10'43"E
C67	15.22	66.00	7.64	13°12'47"	15.19	N78°52'05"W
C68	25.84	66.00	13.09	22°26'08"	25.68	S61°02'38"E
C69	14.97	66.00	7.52	12°59'33"	14.93	N43°19'48"W
C70	25.90	66.00	13.12	22°28'51"	25.73	S25°35'36"E
C71	31.61	66.00	16.12	27°26'34"	31.31	N00°37'53"W
C72	31.15	66.00	15.87	27°02'36"	30.86	S26°36'42"W
C73	9.64	66.00	4.83	8°22'05"	9.63	N44°19'03"E
C74	35.41	139.00	17.80	14°35'41"	35.31	S41°12'15"W
C75	30.03	139.00	15.07	12°22'43"	29.97	N27°43'03"E
C76	43.50	139.00	21.93	17°55'56"	43.33	S12°33'44"W
C77	88.28	530.00	44.24	9°32'36"	88.17	S03°31'25"E
C78	85.10	470.00	42.67	10°22'28"	84.99	S03°06'28"E
C79	46.37	470.00	23.20	5°39'11"	46.35	S76°19'29"E
C80	4.49	150.00	2.24	1°42'50"	4.49	S36°50'29"E
C81	28.28	150.00	14.18	10°48'12"	28.24	S43°06'00"W

DATE: 08-15-01
 DRAWN BY: VMB
 CH'D BY:
 NAME: 1-REV-PLAT02
 PATH: R:\1221
 F.B.

REVISIONS

DATE DESCRIPTION

DATE: 08-15-01
 DRAWN BY: VMB
 CH'D BY:
 NAME: 1-REV-PLAT02
 PATH: R:\1221
 F.B.

KS ASSOCIATES, INC.
 200 Burns Road, Suite 100
 P.O. Box 569
 Elyria, Ohio 44035
 Phone (440) 365-4790
 Fax (440) 365-4790
 main@ksassoc.com
 www.ksassoc.com

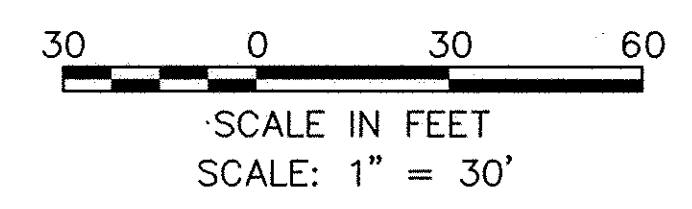
KS ASSOCIATES

RECORD PLAT
 VILLAS OF AVALON PHASE NO. 1
 CITY OF NORTH RIDGEVILLE, LORAIN COUNTY, OHIO

SHEET 3 OF 6
 JOB NO. 01221

NOTES:
 1. FOR EASEMENT LOCATIONS SEE SHEET 5
 2. FOR LINE TABLES SEE SHEET 5

LEGEND
 ● IRON PIPE FOUND
 ○ IRON PIPE SET

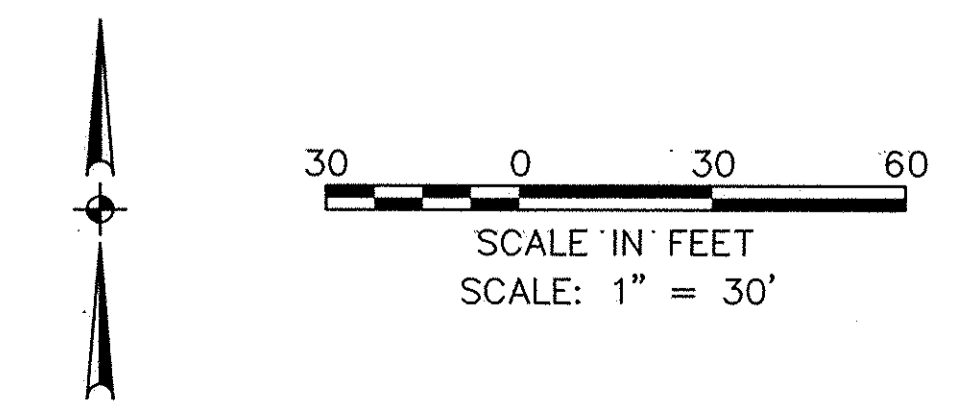


R:\01000\01221\del\control\dwg\1-REV-PLAT02.dwg 08/22/2002 04:31:17 PM EDT



LINE TABLE				LINE TABLE			
LINE	BEARING	LENGTH	SHEET	LINE	BEARING	LENGTH	SHEET
L1-1	S74°15'03"E	15.60	2	L19-3	S31°41'48"W	14.07	2
L1-2	N76°27'09"E	13.17	2	L19-4	S00°12'26"W	13.00	2
L1-3	N52°55'32"W	14.17	2	L20-1	N00°12'26"E	13.00	2
L1-4	N74°15'03"W	17.78	2	L20-2	N24°25'01"W	13.20	2
L2-1	S74°15'03"E	14.50	2	L20-3	S31°41'48"W	14.07	2
L2-2	N80°15'34"E	13.29	2	L20-4	S00°12'26"W	13.00	2
L2-3	N46°07'00"W	13.61	2	L21-1	N90°00'00"W	24.88	2
L2-4	N74°15'03"W	14.50	2	L21-2	S77°55'53"W	13.57	2
L3-1	S74°15'03"E	14.50	2	L21-3	S55°14'09"E	12.20	2
L3-2	N82°21'43"E	13.20	2	L21-4	S90°00'00"E	19.63	2
L3-3	N46°07'00"W	13.61	2	L22-1	N90°00'00"W	19.62	2
L3-4	N74°15'03"W	14.50	2	L22-2	S69°25'19"W	14.89	2
L4-1	S74°15'03"E	30.06	2	L22-3	S64°26'09"E	12.18	2
L4-2	N87°09'41"E	19.19	2	L22-4	S90°00'00"E	15.11	2
L4-3	N46°07'00"W	12.11	2	L23-1	N05°13'49"W	14.48	3
L4-4	N74°15'03"W	22.59	2	L23-2	N25°13'49"W	12.80	3
L5-1	S00°12'26"W	23.77	2	L23-3	S14°46'11"W	12.77	3
L5-2	S20°39'29"E	12.02	2	L23-4	S05°13'49"E	14.48	3
L5-3	N07°11'53"E	16.21	2	L24-1	N03°55'36"W	13.98	3
L5-4	N00°12'26"E	32.42	2	L24-2	N23°55'36"W	12.80	3
L6-1	S00°02'30"E	13.00	2	L24-3	S16°04'24"W	12.33	3
L6-2	S27°21'14"E	13.54	2	L24-4	S03°55'36"E	14.98	3
L6-3	N25°06'36"E	13.77	2	L25-1	N03°55'36"W	15.47	3
L6-4	N00°02'30"W	13.15	2	L25-2	N23°55'36"W	14.80	3
L7-1	S00°02'30"E	13.00	2	L25-3	S16°04'24"W	12.88	3
L7-2	S27°21'14"E	13.54	2	L25-4	S03°55'36"E	13.88	3
L7-3	N25°06'36"E	13.23	2	L26-1	N41°27'11"E	18.63	3
L7-4	N00°02'30"W	13.00	2	L26-2	N21°27'11"E	13.13	3
L8-1	S00°12'26"W	13.00	2	L26-3	S61°27'11"W	14.61	3
L8-2	S24°56'40"E	13.26	2	L26-4	S41°27'11"W	19.96	3
L8-3	N27°31'10"E	13.51	2	L27-1	N76°49'16"E	22.60	3
L8-4	N00°12'26"E	13.00	2	L27-2	N56°49'16"E	13.36	3
L9-1	S00°12'26"W	13.00	2	L27-3	N83°10'44"W	14.24	3
L9-2	S24°56'40"E	13.26	2	L27-4	S76°49'16"W	23.40	3
L9-3	N27°31'10"E	13.51	2	L28-1	S64°35'07"E	27.03	3
L9-4	N00°12'26"E	13.00	2	L28-2	S84°35'07"E	13.28	3
L10-1	S00°12'26"W	13.00	2	L28-3	N44°35'07"W	14.37	3
L10-2	S24°56'40"E	13.26	2	L28-4	N64°35'07"W	28.03	3
L10-3	N27°31'10"E	13.51	2	L29-1	S00°52'58"E	17.19	3
L10-4	N00°12'26"E	13.00	2	L29-2	S20°52'58"E	12.00	3
L11-1	S00°12'26"W	13.36	2	L29-3	N00°52'58"E	40.65	3
L11-2	S24°56'40"E	14.04	2	L30-1	S00°52'58"E	13.00	3
L11-3	N27°31'10"E	13.51	2	L30-2	S20°52'58"E	12.77	3
L11-4	N00°12'26"E	13.00	2	L30-3	N19°07'02"E	13.42	3
L12-1	S00°12'26"W	34.47	2	L30-4	N00°52'58"W	13.18	3
L12-2	S08°00'15"E	17.12	2	L31-1	S00°52'58"E	13.00	3
L12-3	N27°47'59"E	12.01	2	L31-2	S20°52'58"E	12.77	3
L12-4	S00°12'26"W	25.21	2	L31-3	N19°07'02"E	12.77	3
L13-1	S71°42'45"W	15.36	2	L31-4	N00°52'58"W	13.00	3
L13-2	S39°57'35"W	13.40	2	L32-1	S00°52'58"E	13.00	3
L13-3	S88°17'15"E	14.93	2	L32-2	S20°52'58"E	12.77	3
L13-4	N71°42'45"E	18.35	2	L32-3	N19°07'02"E	12.77	3
L14-1	S71°42'45"W	14.50	2	L32-4	N00°52'58"W	13.00	3
L14-2	S51°42'45"W	12.77	2	L33-1	S00°52'58"E	13.02	3
L14-3	S88°17'15"E	12.77	2	L33-2	S20°52'58"E	13.06	3
L14-4	N71°42'45"E	14.50	2	L33-3	N19°07'02"E	12.77	3
L15-1	S71°42'45"W	14.50	2	L33-4	N00°52'58"W	13.00	3
L15-2	S51°42'45"W	12.77	2	L34-1	S36°40'23"W	16.22	3
L15-3	S88°17'15"E	12.77	2	L34-2	S16°40'23"W	12.90	3
L15-4	N71°42'45"E	14.50	2	L34-3	N56°40'23"E	14.72	3
L16-1	N71°42'45"E	14.50	2	L34-4	N36°40'23"E	17.96	3
L16-2	N41°41'16"E	13.86	2	L35-1	S72°39'46"W	17.38	3
L16-3	N80°21'38"W	13.58	2	L35-2	S52°39'46"W	12.86	3
L16-4	S71°42'45"W	14.50	2	L35-3	S87°20'14"E	14.81	3
L17-1	N00°12'26"E	13.00	2	L35-4	N72°39'46"E	19.24	3
L17-2	N24°25'01"W	13.20	2	L36-1	S88°27'07"W	22.93	3
L17-3	S31°41'48"W	14.06	2	L36-2	S68°27'07"W	20.73	3
L17-4	S00°12'26"W	13.00	2	L36-3	S71°32'53"E	12.04	3
L18-1	N00°12'26"E	13.00	2	L36-4	N88°27'07"E	16.53	3
L18-2	N24°25'01"W	13.20	2	L37-1	S88°27'07"W	33.12	3
L18-3	S31°41'48"W	14.07	2	L37-2	S68°27'07"W	17.17	3
L18-4	S00°12'26"W	13.00	2	L37-3	S71°32'53"E	12.50	3
L19-1	N00°12'26"E	13.00	2	L37-4	N88°27'07"E	22.86	3
L19-2	N24°25'01"W	13.20	2				

NOTE:
FOR LOT AND BOUNDARY DIMENSIONS SEE SHEET 3.



BY	
DESCRIPTION	
DATE	
REVISIONS	
DATE: 08-15-01	
DRAWN BY: VMB	
CH'D BY:	
NAME: 1-REV-PLAT04	
PATH: R:\01221	
F.B.	

KS ASSOCIATES
85 ASSOCIATES, INC.
890 Burns Road, Suite 100
P.O. Box 569
Elyria, Ohio 44035
Phone (440) 355-5730
fax (440) 355-5730
www.ksassoc.com

RECORD PLAT	
VILLAS OF AVALON PHASE NO. 1	
CITY OF NORTH RIDGEVILLE, LORAIN COUNTY, OHIO	
SHEET	5
OF	6
JOB NO.	01221

R:\01000\01221\1dtd\control.dwg 1-REV-PLAT04.dwg 08/22/2002 03:54:34 PM EDT

