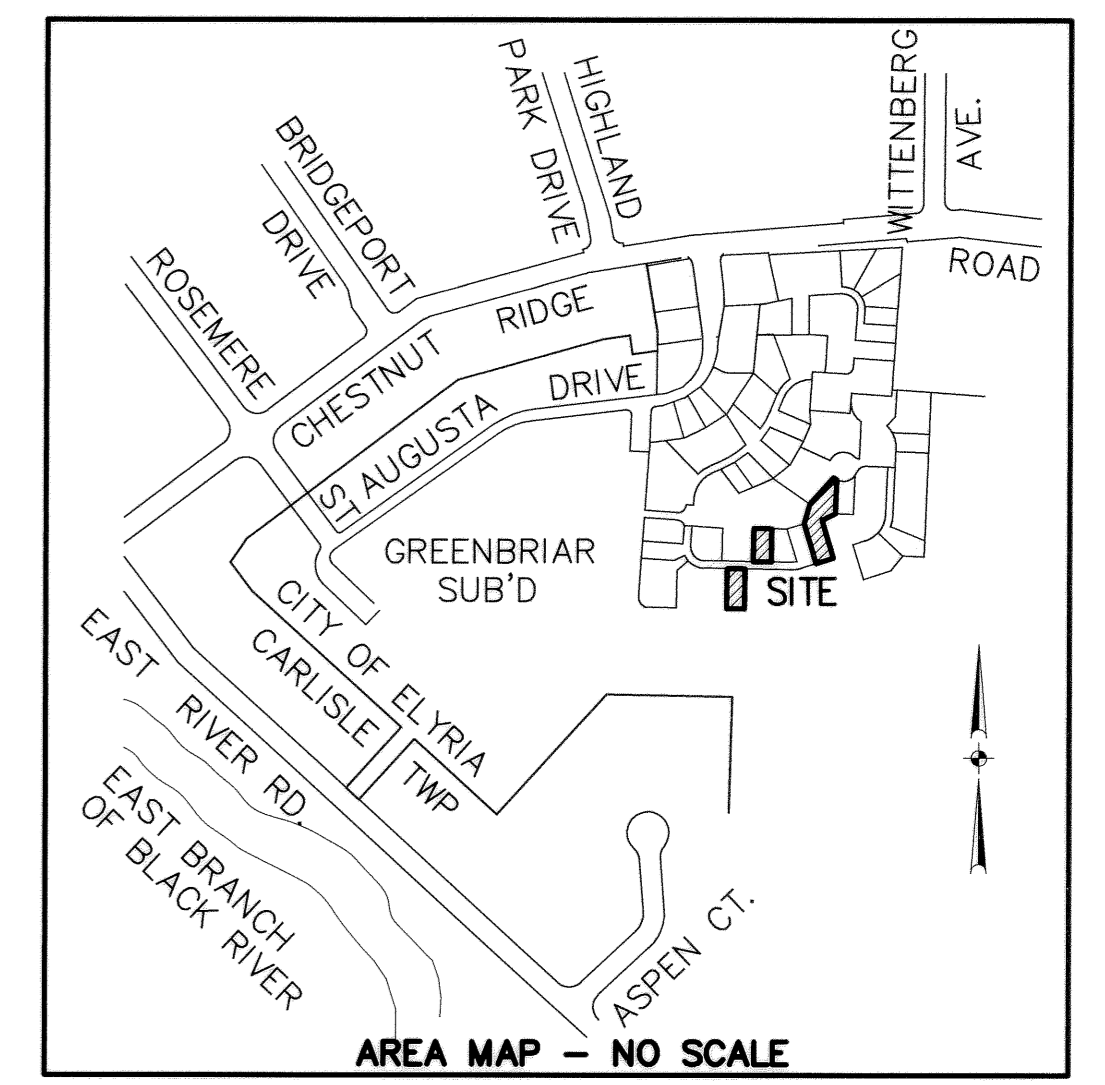




**LEGEND**  
 ○ 5/8" CAPPED REBAR SET  
 ⊙ IRON PIN FOUND  
 ⊞ MONUMENT BOX FOUND

**TOTAL AREA PHASE 14**  
**0.5916 AC.**



CURVE DATA						
CURVE	RADIUS	LENGTH	TANGENT	CHORD	BEARING	DELTA
C1	25.00'	39.27'	25.00'	35.36'	N48°54'17"E	90°00'00"
C2	89.00'	97.60'	54.36'	92.78'	S35°19'14"W	62°49'55"
C3	24.09'	28.52'	16.20'	26.88'	N52°10'47"W	67°49'53"
C4	111.00'	41.42'	20.95'	41.18'	S56°02'47"W	21°22'49"
C5	289.00'	92.98'	46.90'	92.58'	N57°31'10"E	18°26'05"
C6	289.00'	62.80'	31.52'	62.67'	N29°00'29"E	12°26'59"
C7	111.00'	61.91'	31.78'	61.11'	S38°45'42"W	31°57'26"
C8	89.00'	106.91'	60.97'	100.60'	N57°11'42"E	68°49'27"
C9	311.00'	48.48'	24.29'	48.43'	N35°46'40"E	8°55'51"
C10	311.00'	89.98'	45.31'	89.67'	N58°26'52"E	16°34'40"
C11	311.00'	47.79'	23.94'	47.74'	N54°33'40"E	8°48'16"
C12	311.00'	42.19'	21.13'	42.16'	N62°51'00"E	7°46'24"

CONTINUED ON SHEET 3

**SHEET INDEX**

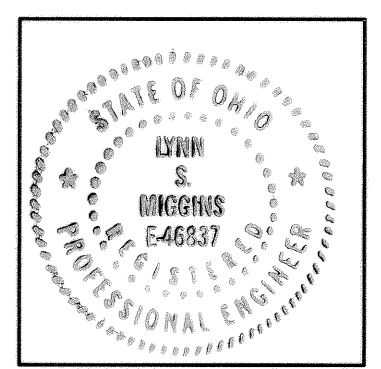
SHEET NO.	DESCRIPTION
1	SURVEY MAP & MISC.
2	SURVEY MAP & MISC. CONTINUED
3	CURVE DATA & OWNERSHIP TABLE
4	FLOOR & FOUNDATION PLANS
5	ELEVATION VIEWS

**TRANSFERRED**  
 IN COMPLIANCE WITH SEC. 319.202  
 OHIO REV. CODE  
 JUN - 6 2002  
 MARK R. STEWART  
 LORAIN COUNTY AUDITOR

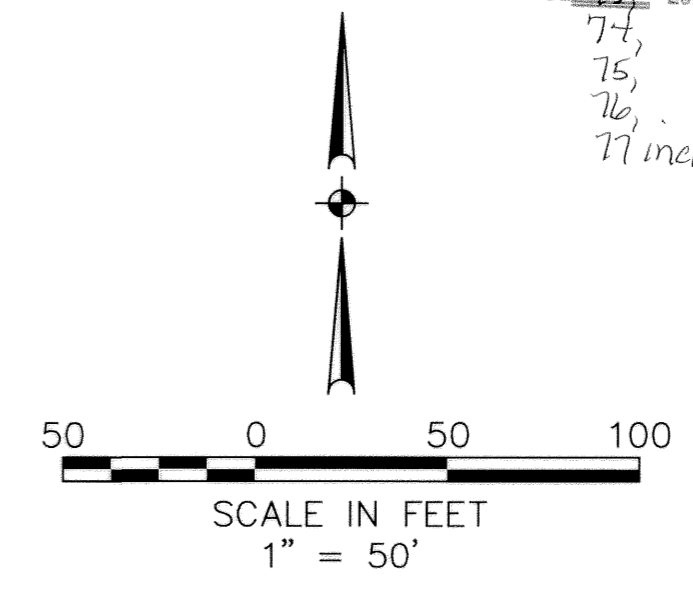
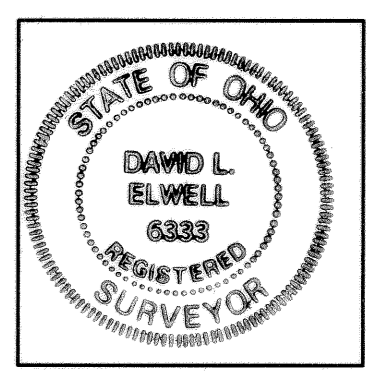
RECEIVED FOR RECORD  
 at 2:21 o'clock P.M. in Plat RECORD  
 VOL. 71 MARY ANN JAMISON  
 PAGE 13, Lorain County Recorder  
 74, Box: LCTD  
 75, LAURA  
 76, # 216-DD  
 77 incl.

**CERTIFICATION**  
 THIS IS TO CERTIFY THAT THE ATTACHED DRAWINGS CORRECTLY REPRESENT THE BUILDINGS AS CONSTRUCTED AND THAT THERE ARE NO ENCROACHMENTS ON ABUTTING PROPERTIES, EXCEPT AS SHOWN.

*Lynn S. Miggins*  
 LYNN S. MIGGINS  
 PROFESSIONAL ENGINEER NO. 46837



*David L. Elwell*  
 DAVID L. ELWELL  
 PROFESSIONAL SURVEYOR NO. 6333



DATE	DESCRIPTION	BY
5-21-02	ORIGINAL ISSUE	ABR

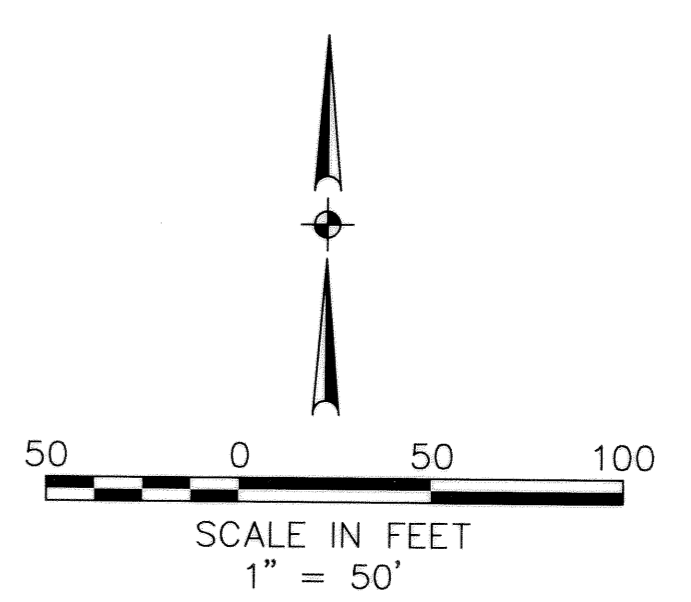
**KS ASSOCIATES, INC.**  
 260 Burns Road, Suite 100  
 P.O. Box 569  
 Elyria, Ohio 44036  
 Phone (440) 365-4730  
 Fax (440) 365-4790  
 mailroom@ksassoc.com  
 www.ksassoc.com

**STONEHEDGE CONDOMINIUMS  
 PHASE NO. 14**

PART OF CARLISLE TOWNSHIP SECTION NO. 5 & PART OF  
 BLOCK "A" IN STONEHEDGE CONDOMINIUMS PHASE 6 (P.V. 64, PP. 64-66)  
 CITY OF ELYRIA COUNTY OF LORAIN STATE OF OHIO

SHEET  
**1** OF  
**5**  
 JOB NO.  
**92424-CP14**

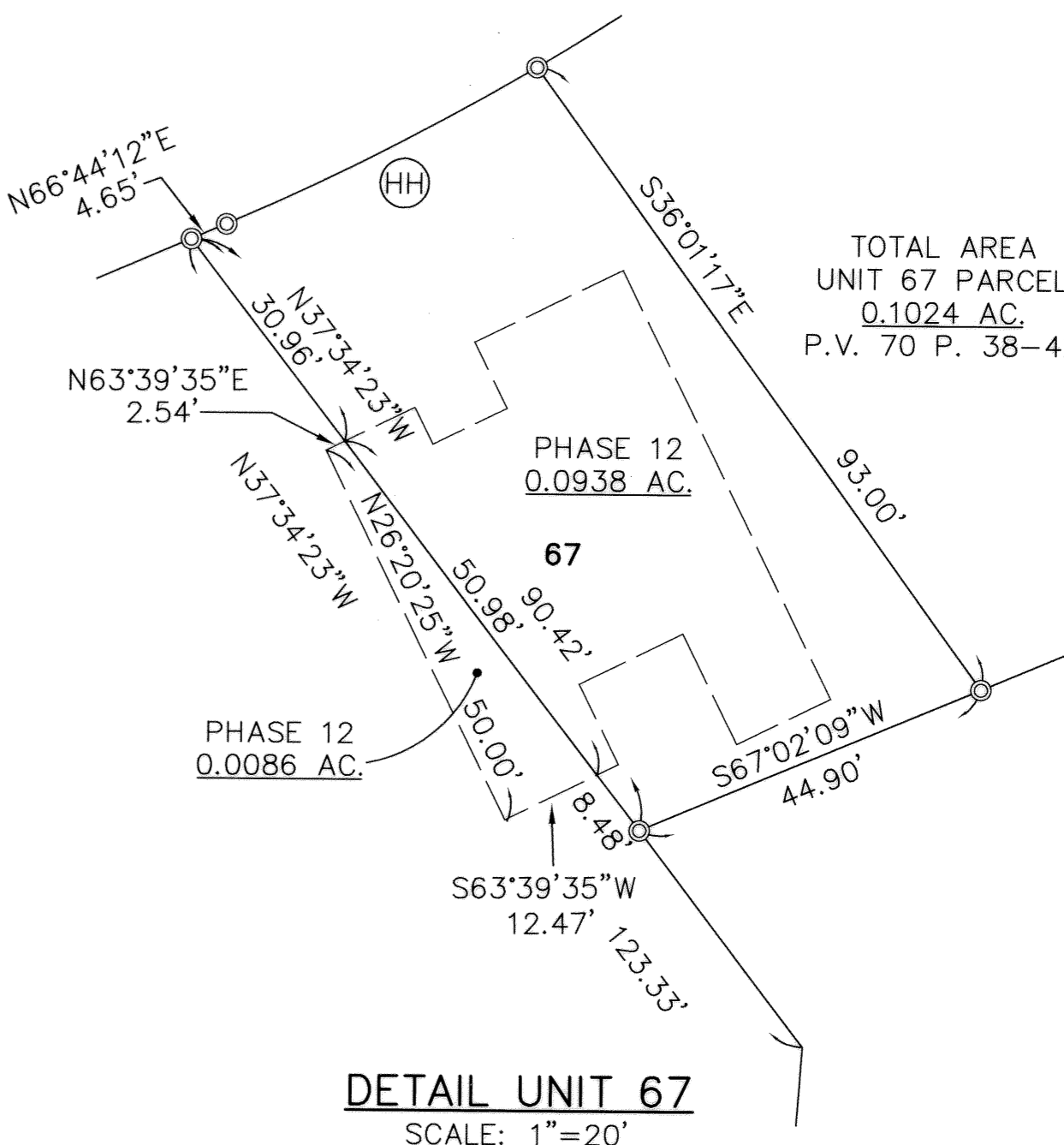
DATE: 5-20-02 \DWG.PATH: R:\92424-CP14\DDT\DWG\14-SURV01



**TOTAL AREA PHASE 14**  
**0.5916 AC.**

FOR CURVE INFORMATION SEE SHEETS 1 & 3

HIGHLAND DEVELOPMENT CO.  
 INST. NO. 980513301  
 INST. NO. 980513302  
 INST. NO. 980586271  
 INST. NO. 20000665694  
 INST. NO. 980586269



**DETAIL UNIT 67**  
 SCALE: 1"=20'

BY	DESCRIPTION
DATE	REVISIONS
DATE: 5-21-02	5-21-02
DRAWN BY: ABR	DATE: 5-21-02
CHECKED BY: ABR	DATE: 5-21-02
DWG. NAME: 14-SUB02	DATE: 5-21-02
PATH: 92424-CP14	DATE: 5-21-02
FR.	DATE: 5-21-02
ADD REMAINDER FROM GREENBRIAR SUBDIVISION NO. 4	DATE: 5-21-02
ORIGINAL ISSUE	DATE: 5-21-02

<b>KS ASSOCIATES, INC.</b> 10000 State 100 P.O. Box 549 Elyria, Ohio 44036 Phone (440) 365-4790 Fax (440) 365-4790 mailroom@ksassoc.com www.ksassoc.com	
<b>KS ASSOCIATES</b>	
<b>STONEHEDGE CONDOMINIUMS</b> <b>PHASE NO. 14</b> PART OF ORIGINAL CARLISLE TOWNSHIP SECTION NO. 5 & PART OF BLOCK "A" IN STONEHEDGE CONDOMINIUMS PHASE 6 (P.V. 64, PP. 64-66) CITY OF ELYRIA, COUNTY OF LORAIN, STATE OF OHIO	
SHEET 2	OF 5
JOB NO. 92424-CP14	

DATE: 5-20-02 \DWG. PATH: R:\92424-CP14\LDOT\DWG\14-TAB101

**CURVE DATA**

<b>A</b> Δ = 38°07'27" R = 25.00' T = 8.64' L = 16.63' C = 16.33' CB = S25°28'22"E	<b>K</b> Δ = 97°04'40" R = 44.00' T = 49.80' L = 74.55' C = 65.95' CB = S44°38'03"E	<b>U</b> Δ = 29°37'44" R = 66.00' T = 17.46' L = 34.13' C = 33.75' CB = N46°02'39"W	<b>EE</b> R=44.00' L=61.06' Tan=36.60' Δ=79°30'36" CH=56.28' CB=N75°53'54"E	<b>MM</b> R=44.00' L=12.25' Tan=6.16' Δ=15°57'06" CH=12.21' CB=S56°22'15"E
<b>B</b> Δ = 80°47'16" R = 130.00' T = 110.61' L = 183.30' C = 168.49' CB = S42°38'06"W	<b>L</b> Δ = 88°45'25" R = 66.00' T = 64.58' L = 102.24' C = 92.32' CB = N48°47'41"W	<b>V</b> Δ = 90°00'00" R = 25.00' T = 25.00' L = 39.27' C = 35.36' CB = S48°54'17"W	<b>FF</b> R=111.00' L=37.75' Tan=19.06' Δ=19°29'03" CH=37.57' CB=N11°59'35"E	<b>NN</b> R=44.00' L=12.03' Tan=6.05' Δ=15°39'39" CH=11.99' CB=N28°18'46"E
<b>C</b> Δ = 24°32'58" R = 190.00' T = 41.34' L = 81.41' C = 80.79' CB = N14°30'57"E	<b>M</b> Δ = 08°19'15" R = 66.00' T = 4.80' L = 9.59' C = 9.58' CB = N00°15'21"W	<b>W</b> Δ = 111°07'22" R = 44.00' T = 64.17' L = 85.34' C = 72.58' CB = S76°02'37"W	<b>GG</b> R=89.00' L=62.53' Tan=32.62' Δ=40°15'29" CH=61.26' CB=N22°22'47"E	<b>OO</b> R=66.00' L=19.04' Tan=9.59' Δ=16°31'41" CH=18.97' CB=S33°46'12"E
<b>D</b> Δ = 40°05'31" R = 25.00' T = 9.12' L = 17.49' C = 17.14' CB = N13°39'13"E	<b>N</b> Δ = 20°15'21" R = 190.00' T = 33.94' L = 67.17' C = 66.82' CB = N72°54'03"E	<b>X</b> Δ = 110°53'45" R = 44.00' T = 63.90' L = 85.16' C = 72.48' CB = N79°51'52"E	<b>HH</b> R=311.00' L=42.19' Tan=21.13' Δ=7°46'24" CH=42.16' CB=N62°51'00"E	<b>PP</b> R=89.00' L=47.22' Tan=24.18' Δ=30°24'05" CH=46.67' CB=N57°42'35"E
<b>E</b> Δ = 53°07'38" R = 25.00' T = 12.50' L = 23.18' C = 22.36' CB = N60°15'48"E	<b>O</b> Δ = 56°14'17" R = 190.00' T = 101.53' L = 186.49' C = 179.10' CB = N54°54'35"E	<b>Y</b> Δ = 43°03'41" R = 25.00' T = 9.86' L = 18.79' C = 18.35' CB = S66°13'06"E	<b>II</b> R=44.00' L=71.36' Tan=46.30' Δ=92°55'21" CH=63.79' CB=S42°33'20"E	<b>QQ</b> R=66.00' L=54.12' Tan=28.69' Δ=46°58'57" CH=52.62' CB=S65°31'31"E
<b>F</b> Δ = 14°39'14" R = 200.00' T = 25.72' L = 51.15' C = 51.01' CB = N16°05'46"E	<b>P</b> Δ = 32°18'52" R = 66.00' T = 19.12' L = 37.22' C = 36.73' CB = N77°00'57"W	<b>Z</b> Δ = 71°46'07" R = 29.31' T = 18.09' L = 31.31' C = 29.31' CB = S56°22'00"W	<b>JJ</b> R=89.00' L=19.30' Tan=9.69' Δ=12°25'38" CH=19.27' CB=N84°46'11"E	<b>RR</b> R=89.00' L=109.76' Tan=63.08' Δ=70°39'34" CH=102.93' CB=N37°34'50"E
<b>G</b> Δ = 26°29'29" R = 55.00' T = 12.95' L = 25.43' C = 25.20' CB = N76°45'16"W	<b>Q</b> Δ = 26°48'49" R = 66.00' T = 15.73' L = 30.89' C = 30.61' CB = N17°49'23"W	<b>AA</b> Δ = 51°10'38" R = 87.45' T = 41.88' L = 78.11' C = 75.54' CB = S21°11'35"E	<b>KK</b> R=111.00' L=35.01' Tan=17.65' Δ=18°04'23" CH=34.87' CB=S81°56'49"W	
<b>H</b> Δ = 8°47'02" R = 111.00' T = 8.53' L = 17.02' C = 17.00' CB = S82°26'06"W	<b>R</b> Δ = 22°39'54" R = 190.00' T = 38.08' L = 75.16' C = 74.67' CB = N38°07'23"E	<b>BB</b> Δ = 58°56'55" R = 71.00' T = 40.13' L = 73.05' C = 69.87' CB = N25°34'00"W	<b>LL</b> R=66.00' L=73.16' Tan=40.85' Δ=63°30'38" CH=69.47' CB=N57°15'41"W	
<b>I</b> Δ = 0°51'42" R = 589.00' T = 4.43' L = 8.86' C = 8.86' CB = N78°28'26"E	<b>S</b> Δ = 13°19'02" R = 190.00' T = 22.18' L = 44.16' C = 44.06' CB = N56°06'51"E	<b>CC</b> Δ = 33°20'33" R = 87.45' T = 26.19' L = 50.89' C = 50.18' CB = S12°16'32"E		
<b>J</b> Δ = 2°48'19" R = 589.00' T = 14.42' L = 28.84' C = 28.84' CB = N85°25'27"E	<b>T</b> Δ = 13°46'24" R = 190.00' T = 22.95' L = 45.67' C = 45.56' CB = N69°39'34"E	<b>DD</b> Δ = 17°50'05" R = 87.45' T = 13.72' L = 27.22' C = 27.11' CB = S37°51'51"E		

**OWNERSHIP PERCENTAGES**

UNIT NO.	SQ. FT.	ELEV. F.F.	% OWNERSHIP
1	1661.92	756.59	1.4236
2	1602.38	756.59	1.3726
3	1191.64	755.86	1.0208
4	1214.22	755.86	1.0401
5	1602.38	757.42	1.3726
6	1661.92	757.42	1.4236
7	1658.47	756.00	1.4206
8	1661.92	756.00	1.4236
9	1196.28	756.42	1.0247
10	1213.70	756.42	1.0397
11	1196.28	756.76	1.0247
12	1213.70	756.76	1.0397
13	1599.80	754.87	1.3704
14	1393.43	756.44	1.1936
15	1713.47	756.37	1.4678
16	1733.47	756.37	1.4849
17	1658.47	757.40	1.4206
18	1661.92	757.41	1.4236
19	1196.28	755.58	1.0247
20	1393.43	757.01	1.1936
21	1393.43	757.56	1.1936
22	1393.43	754.55	1.1936
23	1196.28	754.53	1.0247
24	1213.70	754.54	1.0397
25	1658.47	758.13	1.4206
26	1661.92	758.13	1.4236
27	1393.43	755.19	1.1936
28	1393.43	754.43	1.1936
29	1393.43	757.07	1.1936
30	1196.28	756.16	1.0247
31	1196.28	755.32	1.0247
32	1393.43	756.45	1.1936
33	1393.43	756.64	1.1936
34	1213.70	753.83	1.0397
35	1393.43	753.61	1.1936
36	1393.43	754.43	1.1936
37	1717.06	754.06	1.4709
38	1717.06	754.20	1.4709
39	1717.06	755.50	1.4709
40	1661.92	756.29	1.4236
41	1658.47	756.29	1.4206
42	1717.06	755.93	1.4709
43	1393.43	754.62	1.1936
44	1717.06	754.78	1.4709
45	1717.06	755.45	1.4709
46	1253.34	754.10	1.0736
47	1705.23	756.45	1.4607
48	1573.19	755.60	1.3476
49	1705.23	755.96	1.4607
50	1705.23	755.61	1.4607
51	1417.96	753.78	1.2146
52	1928.15	756.29	1.6517
53	1928.15	755.93	1.6517
54	1207.46	754.58	1.0343
55	1207.46	754.58	1.0343
56	1393.43	754.54	1.1936
57	1393.43	756.42	1.1936
58	1207.46	754.62	1.0343
59	1717.06	755.09	1.4709
60	1207.46	753.81	1.0343
61	1389.04	755.51	1.1899
62	1207.46	753.98	1.0343
63	1335.42	754.88	1.1439
64	1717.06	755.31	1.4709
65	1520.92	755.63	1.3028
66	1600.25	755.95	1.3708
67	1520.92	755.20	1.3028
68	2053.62	755.47	1.7590
69	1317.98	755.47	1.1290
70	1717.06	752.12	1.4709
71	1520.92	754.64	1.3028
72	1600.25	756.07	1.3708
73	1335.42	755.62	1.1439
74	1520.92	755.40	1.3028
75	1736.17	756.82	1.4872
76	1520.92	756.89	1.3028
77	1736.17	756.16	1.4872
78	1520.92	757.05	1.3028
<b>TOTAL</b>	<b>116,740.42</b>		<b>100.00%</b>

REVISIONS	DATE	DESCRIPTION	BY
	5-21-02	ORIGINAL ISSUE	ABR

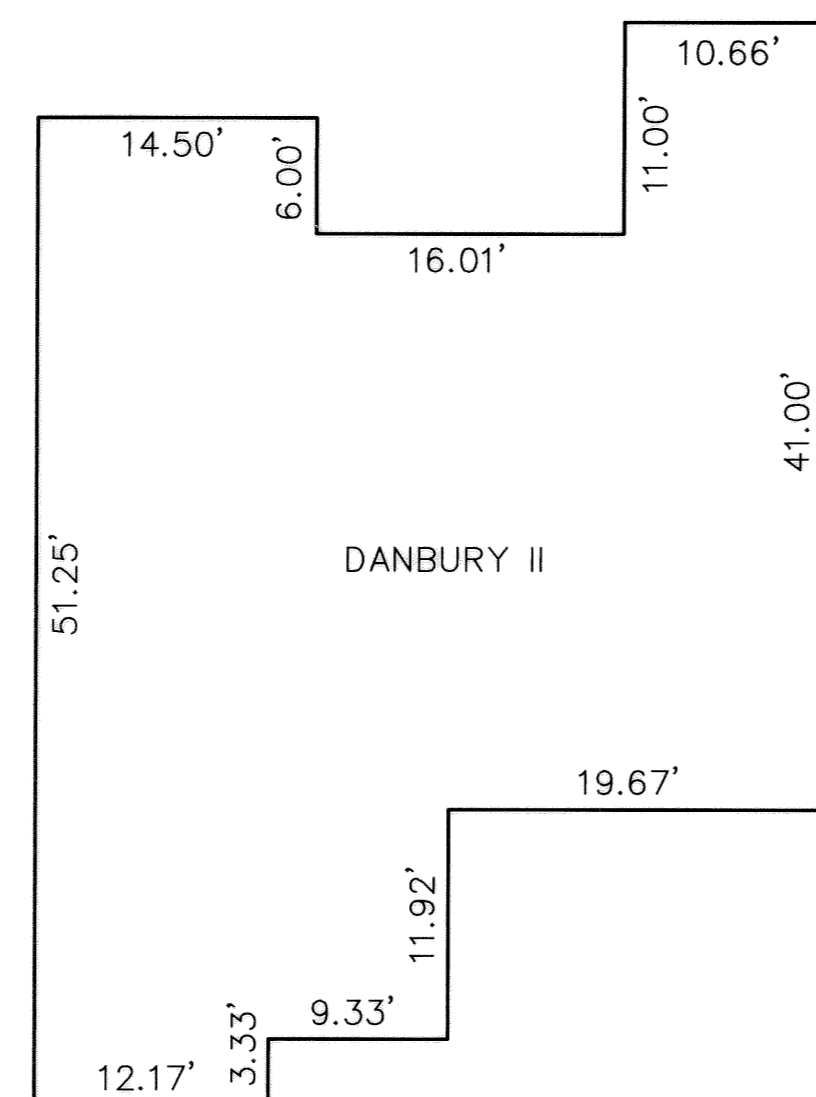


KS ASSOCIATES, INC.  
260 Burns Road, Suite 100  
P.O. Box 569  
Elyria, Ohio 44036  
Phone (440) 365-4730  
Fax (440) 365-4790  
mailroom@ksassoc.com  
www.ksassoc.com

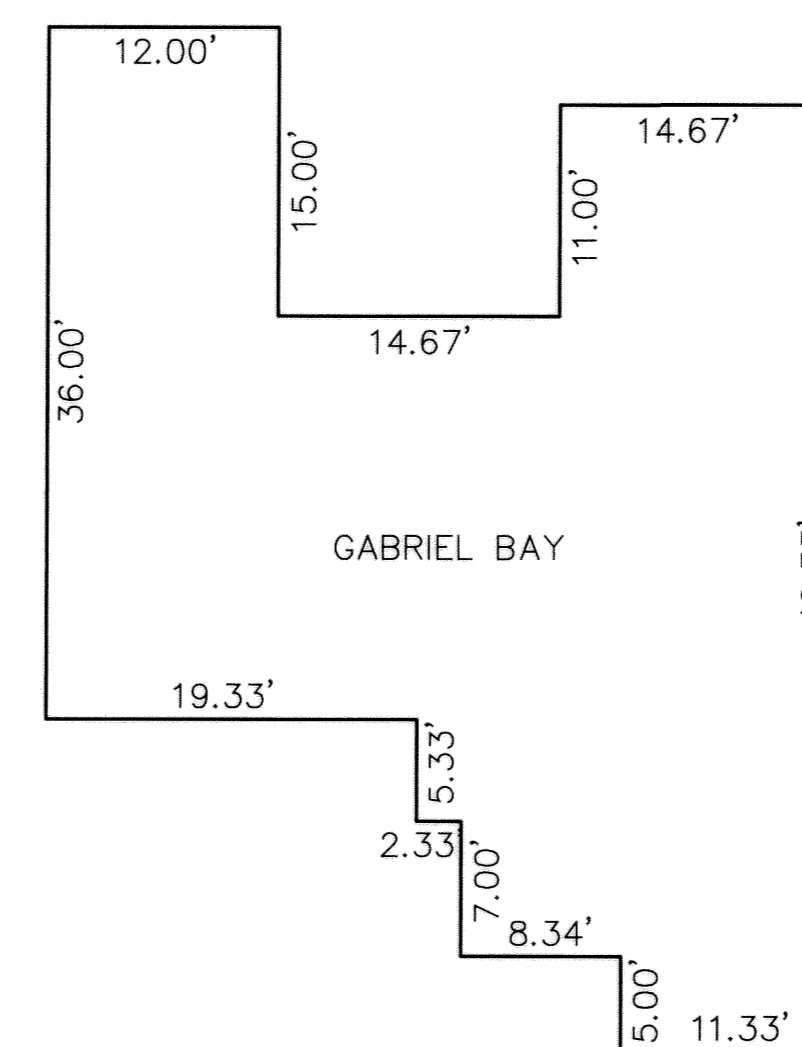
**STONEHEDGE CONDOMINIUMS  
PHASE NO. 14**

PART OF ORIGINAL TOWNSHIP SECTION NO. 5 & PART OF  
BLOCK "A" IN STONEHEDGE CONDOMINIUMS PHASE 6 (P.V. 64, PP. 64-66)  
CITY OF ELYRIA COUNTY OF LORAIN STATE OF OHIO

SHEET **3** OF **5**  
JOB NO. **92424-CP14**

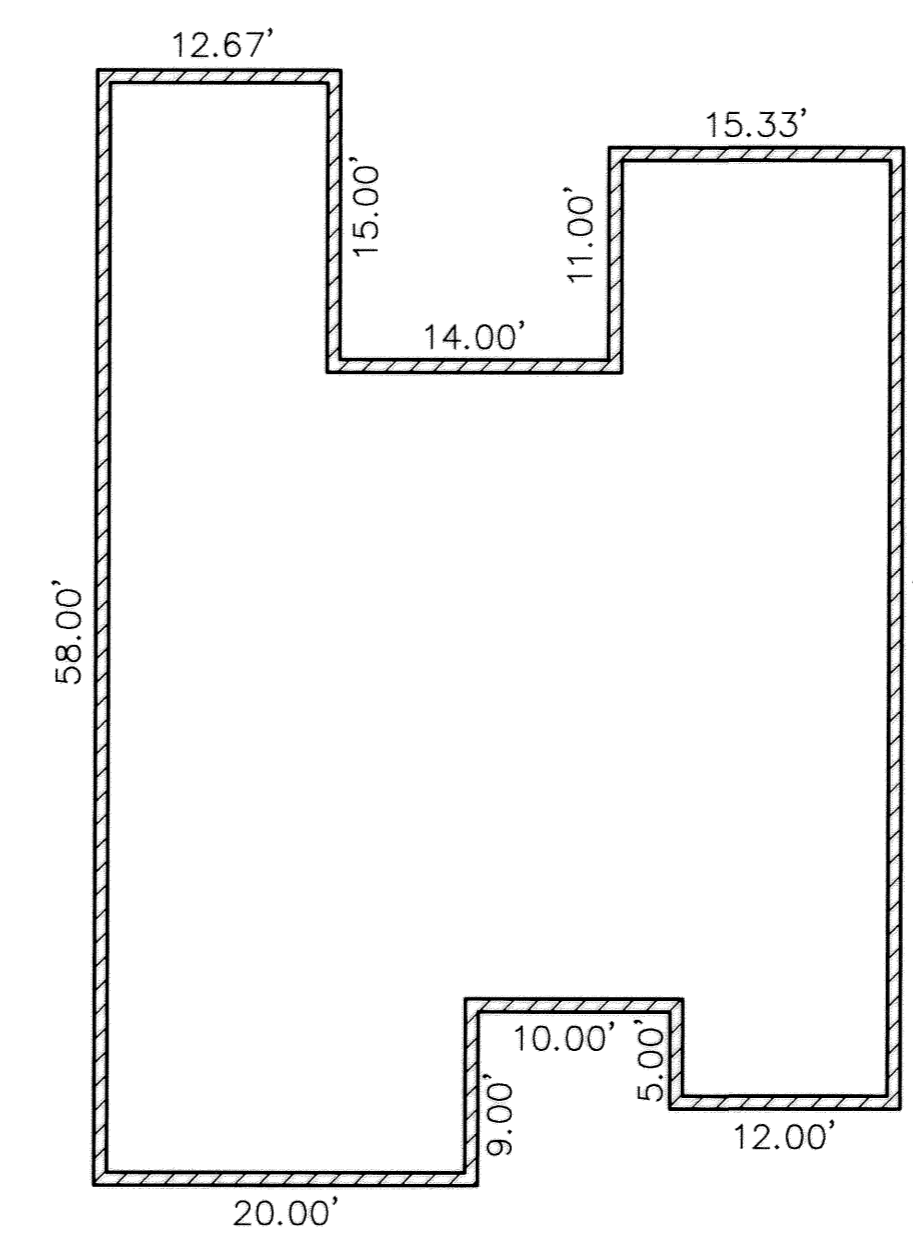
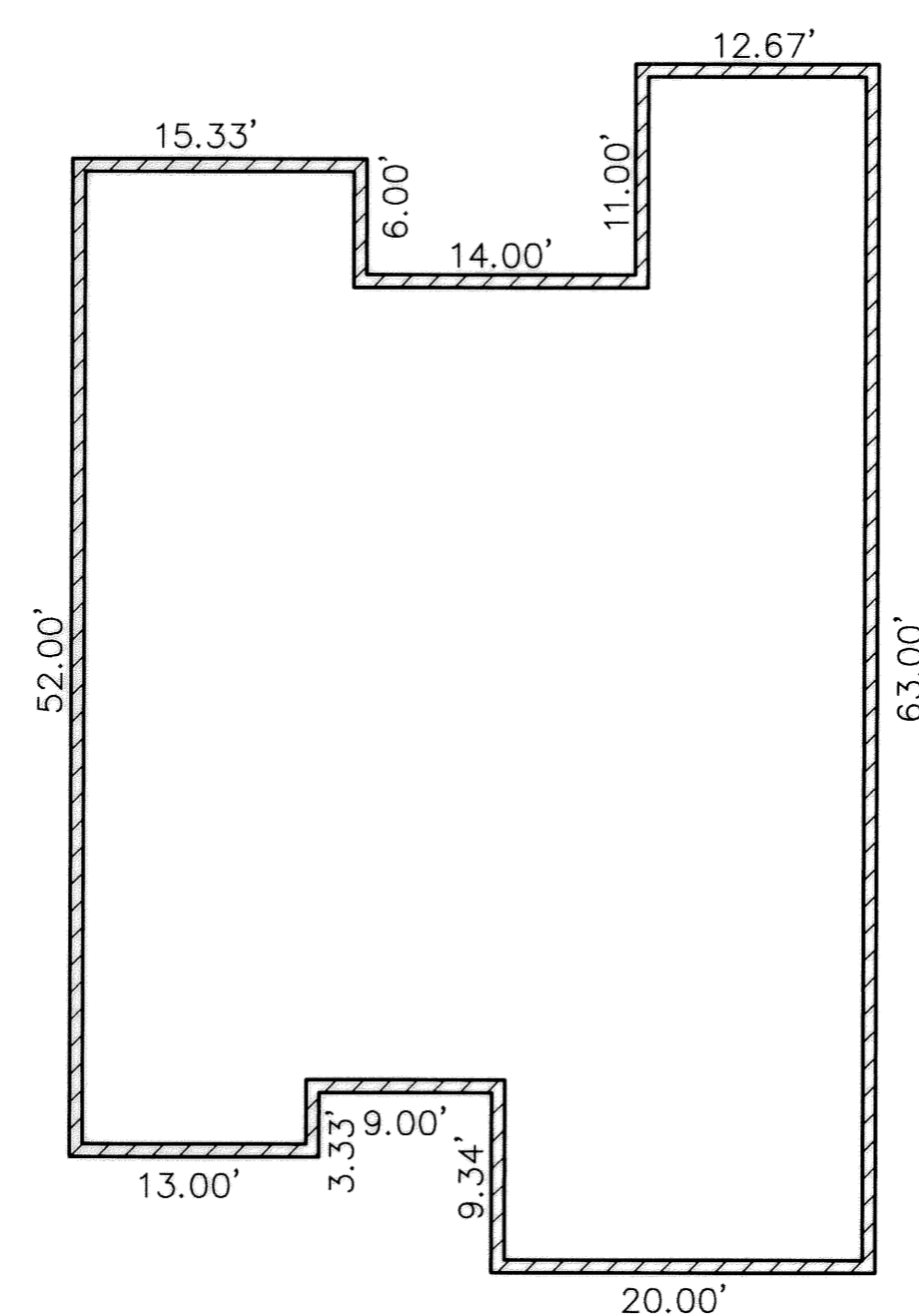
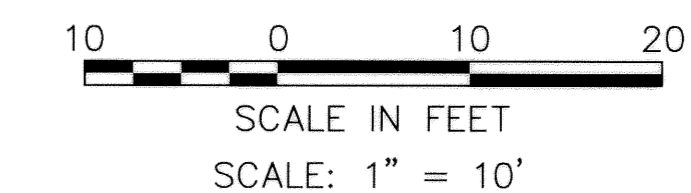


NOTE: TYPICAL FOR UNITS 75 & 77  
BUT SUBJECT TO CHANGES IN ORIENTATION



NOTE: TYPICAL FOR UNITS 76 & 78  
BUT SUBJECT TO CHANGES IN ORIENTATION

**FLOOR PLANS**  
(INTERIOR DIMENSIONS)



**FOUNDATION PLANS**  
(EXTERIOR DIMENSIONS)

DATE: 5-20-02 \DWG. PATH: R:\92424-CP14\LDOT\DWG\14-PLAN01

REVISIONS	DATE	DESCRIPTION	BY
	5-21-02	ORIGINAL ISSUE	ABR

**KS ASSOCIATES, INC.**  
 260 Burns Road, Suite 100  
 P.O. Box 569  
 Elyria, Ohio 44036  
 Phone (440) 365-4730  
 Fax (440) 365-4790  
 mailroom@ksassoc.com  
 www.ksassoc.com

**STONEHEDGE CONDOMINIUMS  
PHASE NO. 14**  
 PART OF ORIGINAL TOWNSHIP SECTION NO. 5 & PART OF  
 BLOCK "A" IN STONEHEDGE CONDOMINIUMS PHASE 6 (P.V. 64, PP. 64-66)  
 CITY OF ELYRIA COUNTY OF LORAIN STATE OF OHIO

SHEET	4	OF	5
JOB NO.	92424-CP14		

