

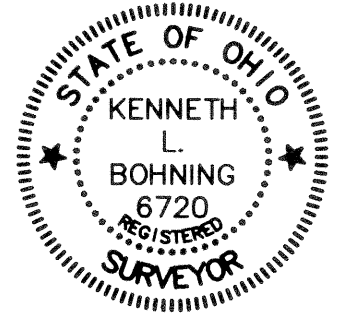
WATERBURY SUBDIVISION NO. 1

BEING PART OF ORIGINAL RIDGEVILLE TOWNSHIP LOT 36 AND ORIGINAL EATON TOWNSHIP LOT 70 NOW IN THE CITY OF NORTH RIDGEVILLE AND THE TOWNSHIP OF EATON LORAIN COUNTY, OHIO

THE ESTABLISHMENT OF THE EXTERIOR PROPERTY LINES AND ROADLINES FOR THE WATERBURY SUBDIVISION ARE BASED UPON A BOUNDARY SURVEY DATED 3/21/01 BY DONALD G. BOHNING & ASSOCIATES, INC. AND PREVIOUSLY SUBMITTED TO THE COUNTY OF LORAIN.

I HEREBY STATE THAT THIS PLAT HAS BEEN COMPILED FROM A SURVEY MADE ON THE GROUND UNDER MY SUPERVISION IN MARCH, 2001, AND THAT IT IS CORRECT TO THE BEST OF MY PROFESSIONAL KNOWLEDGE, INFORMATION AND BELIEF. DISTANCES ARE GIVEN IN FEET AND DECIMAL PARTS THEREOF. COURSES ARE REFERENCED TO AN ASSUMED MERIDIAN AND ARE USED TO INDICATE ANGLES ONLY. - INDICATES IRON MONUMENTS TO BE SET (1" REBAR W/IDENTIFICATION D.G. BOHNING ASSOC.) AFTER CONSTRUCTION OF IMPROVEMENTS.

Kenneth L. Bohning, Registered Surveyor No. 6720



ACCEPTANCE & DEDICATION (CITY OF NORTH RIDGEVILLE)

SITUATED IN THE CITY OF NORTH RIDGEVILLE, COUNTY OF LORAIN, STATE OF OHIO, AND BEING OF ORIGINAL LOT NUMBER 36, CONTAINING 130.2138 ACRES, AND BEING THE SAME TRACT AS CONVEYED TO SUNRISE DEVELOPMENT CO. AND DESCRIBED IN DEED RECORDED IN DEED BOOK PAGE 731710, RECORDER'S OFFICE, LORAIN COUNTY, OHIO.

THE UNDERSIGNED (SET FORTH ALL PARTIES HAVE RECORD LEGAL TITLE INTEREST IN THE PARCEL)

SUGAR CHESTNUT, LLC, AN OHIO LIMITED LIABILITY COMPANY. BY: FOREST CITY LAND GROUP, INC. MEMBER

HEREBY CERTIFY THAT THE ATTACHED PLAT CORRECTLY REPRESENTS THEIR "WATERBURY SUBDIVISION" A SUBDIVISION OF LOTS 1 TO 64, INCLUSIVE, DO HEREBY ACKNOWLEDGE THIS PLAT OF SAME AND DEDICATE TO USE AS SUCH, ALL OR PARTS OF THE ROADS, BOULEVARDS, CUL-DE-SACS, PARKS, PLANTING STRIPS, ETCETERA SHOWN HEREIN AND NOT HERETOFORE DEDICATED.

THE UNDERSIGNED FURTHER AGREES THAT ANY USE OR IMPROVEMENTS MADE ON THIS LAND SHALL BE IN CONFORMITY WITH ALL EXISTING PLATTING, HEALTH OR LAWFUL RULES AND REGULATIONS INCLUDING THE APPLICABLE OFF-STREET PARKING AND LOADING REQUIREMENTS OF THE CITY OF NORTH RIDGEVILLE, OHIO, FOR THE BENEFIT OF THEMSELVES AND ALL OTHER SUBSEQUENT PARTIES TAKING TITLE FROM, UNDER OR THROUGH THE UNDERSIGNED.

THE DIMENSIONS OF LOTS AND STREETS ARE SHOWN ON THE PLAT IN FEET AND DECIMAL PARTS THEREOF. EASEMENTS ARE RESERVED WHERE INDICATED ON THE PLAT FOR PUBLIC UTILITY PURPOSES ABOVE AND BENEATH THE SURFACE OF THE GROUND.

IN WITNESS WHEREOF THE UNDERSIGNED HAVE HEREUNTO SET THEIR HANDS THIS 29th DAY OF November, 2001

Witnesses: Susan M. Ternes, Robert F. Monchein

BEFORE ME, A NOTARY PUBLIC IN AND FOR SAID COUNTY, APPEARED MICHELLE MEREDITH, Notary Public, State of Ohio, Commission Expires June 8, 2002



APPROVALS (CITY OF NORTH RIDGEVILLE)

APPROVED THIS 16th DAY OF November, 2001. Approved by: Mary Ann Jamison, Secretary (or Responsible Official) City Planning Commission; Thomas Elwell, Mayor (or Designated Member of Council); Mark R. Stewart, City Engineer.

THIS PLAT OF THE WATERBURY SUBDIVISION THE GRANTING OF EASEMENTS FOR PUBLIC FACILITIES AND APURTENANCES AND THE DEDICATION FOR PUBLIC PURPOSES OF THE STREETS HEREON HAS BEEN APPROVED BY THE COUNCIL OF THE CITY OF NORTH RIDGEVILLE BY ORDINANCE RESOLUTION NO. 02-379-2001 ADOPTED THIS 24th DAY OF August, 2001

ACCEPTANCE & DEDICATION (COUNTY OF LORAIN)

WE THE UNDERSIGNED: ROBERT M. JR. & SUSAN M. TERNES

OWNER(S) OF THE PROPERTY SHOWN AND DESCRIBED HEREON DO (DOES) HEREBY ASSENT TO AND ADOPT THIS SUBDIVISION PLAT AND ACKNOWLEDGE THAT THE SAME WAS MADE AT THEIR REQUEST, AND HEREBY DEDICATE THE THOROUGHFARES TO PUBLIC USE AS SHOWN IN GRAPHIC SYMBOL ON THIS PLAT.

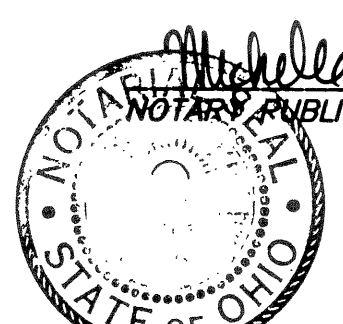
BY:

Signatures of Robert M. Ternes, Jr. and Susan M. Ternes, with witnesses Edward W. Suravi and Michelle Meredith.

STATE OF OHIO COUNTY OF LORAIN

BEFORE ME, A NOTARY PUBLIC IN AND FOR SAID COUNTY, PERSONALLY APPEARED, THE FOREMENTIONED, THE INDIVIDUAL(S) WHO EXECUTED THE FOREGOING INSTRUMENT, AND THAT SUCH INSTRUMENT IS THEIR FREE ACT AND DEED.

IN WITNESS WHEREOF, I HAVE HEREUNTO SET MY HAND AND OFFICIAL SEAL AT Columbus, Ohio, this 29th DAY OF November, 2001



APPROVALS (COUNTY OF LORAIN)

APPROVED THIS 29th DAY OF November, 2001. Approved by: Lorain County Engineer, Chairman, Board of Township Trustees, Lorain County Prosecutor's Office, Director, Lorain County Planning Commission.

RECORD STATEMENTS

TRANSFERRED THIS DAY OF 2001. FILED FOR RECORD THIS 20 DAY OF December, 2001 AT 11:32 A.M. RECORDED THIS 20 DAY OF DECEMBER, 2001 IN PLAT BOOK 70, PAGE No. 51, 52, 53, 54, 55

TRANSFER BY AFFIDAVIT

MARK R. STEWART, LORAIN COUNTY AUDITOR. NO TRANSFER NECESSARY. DEPUTY: MARK R. STEWART, LORAIN COUNTY AUDITOR.

TRANSFERRED IN COMPLIANCE WITH SEC. 319-202 OHIO REV. CODE DEC 20 2001

MARK R. STEWART, LORAIN COUNTY AUDITOR JAN 25 2002

RECEIVED FOR RECORD at 2:19 o'clock P.M. in Plat RECORD VOL 70 MARY ANN JAMISON PAGE 76 Lorain County Recorder 77 82 78 83 incl. 79 80 81

NOTE: THIS SUBDIVISION PLAT IS BEING RE-RECORDED TO AMEND THE SIDEYARD SETBACKS FOR SUBLOTS 19, 27, 28, 35, 36, 39, 52 & 54

UTILITY EASEMENTS

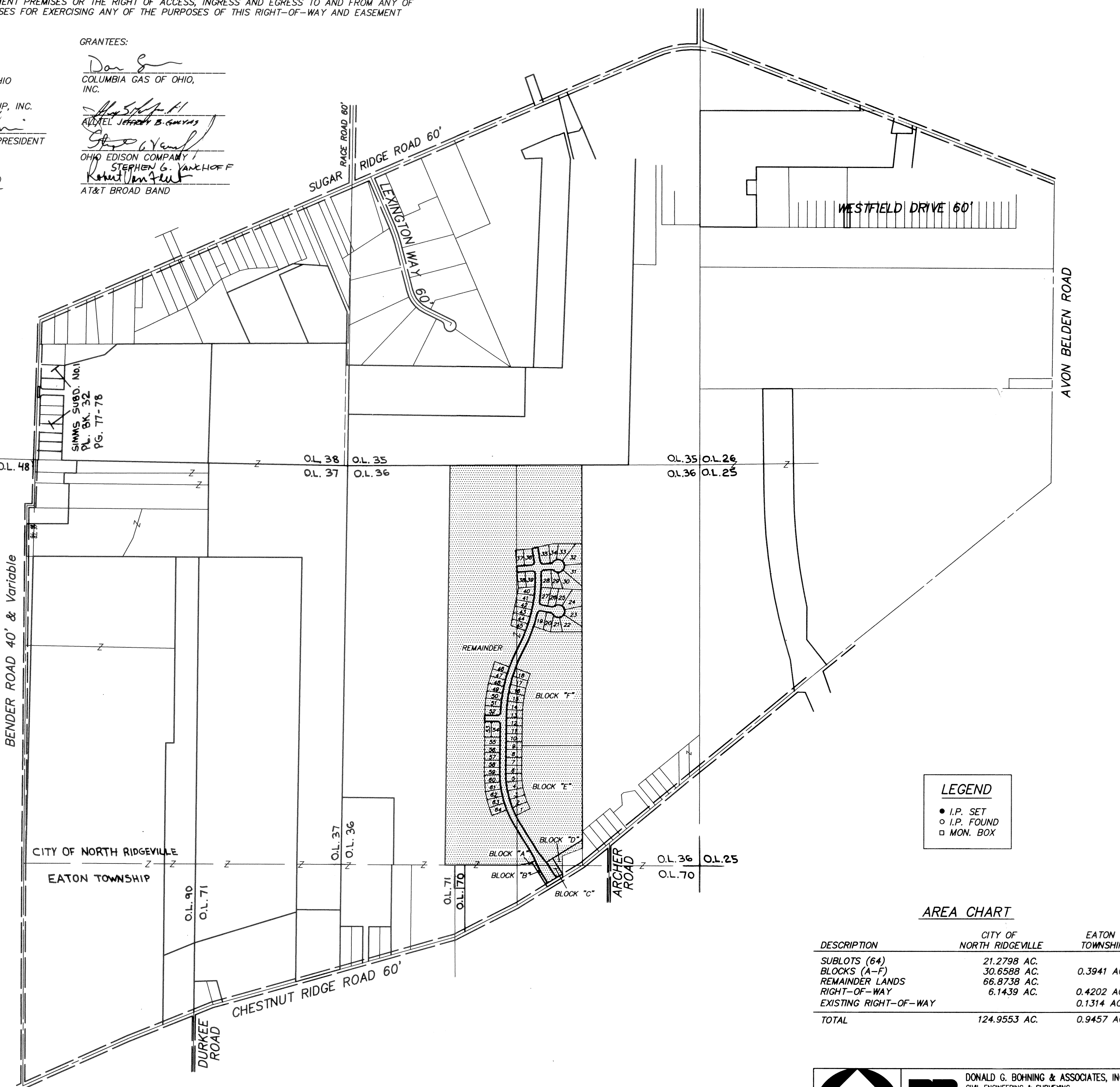
WE THE UNDERSIGNED OWNER OF THE WITHIN PLATTED LAND, DO HEREBY GRANT UNTO THE COLUMBIA GAS OF OHIO, ALLTEL, OHIO EDISON COMPANY, AT&T BROAD BAND, ALL OHIO CORPORATIONS, THEIR SUCCESSORS AND ASSIGNS (HEREINAFTER REFERRED TO AS GRANTEE) A PERMANENT RIGHT-OF-WAY AND EASEMENT TWELVE (12) FEET IN WIDTH, UNDER, OVER, AND THROUGH ALL SUBLOTS AND ALL LANDS OWNED BY THE GRANITOR SHOWN HEREON AND PARALLEL WITH AND CONTIGUOUS TO THE PUBLIC THOROUGHFARES, AND ALSO UPON LANDS AS DEPICTED HEREON TO CONSTRUCT, PLACE, OPERATE, MAINTAIN, REPAIR, RECONSTRUCT, RELOCATE, RENEW, SUPPLEMENT, OR REMOVE SUCH UNDERGROUND ELECTRIC, AND COMMUNICATIONS CABLES, DUCTS, CONDUITS, PIPES, GAS PIPE LINES, SURFACE OR BELOW GROUND MOUNTED TRANSFORMERS AND PEDESTALS, CONCRETE PADS AND OTHER FACILITIES AS ARE DEEMED NECESSARY OR CONVENIENT BY THE GRANTEEES FOR DISTRIBUTING, TRANSPORTING, AND TRANSMITTING ELECTRICITY, GAS, AND COMMUNICATION SIGNALS FOR PUBLIC AND PRIVATE USE AT SUCH LOCATION AS THE GRANTEEES MAY DETERMINE UPON, WITHIN AND ACROSS SAID EASEMENT PREMISES. SAID EASEMENT RIGHTS SHALL INCLUDE THE RIGHT, WITHOUT LIABILITY THEREFORE, TO REMOVE TREES AND LANDSCAPING, INCLUDING LAWNS WITHIN AND WITHOUT SAID EASEMENT PREMISES WHICH MAY INTERFERE WITH THE INSTALLATION, MAINTENANCE, REPAIR OR OPERATION OF SAID ELECTRIC, GAS AND COMMUNICATIONS FACILITIES THE RIGHT TO INSTALL, REPAIR, AUGMENT AND MAINTAIN SERVICE CABLES AND PIPE LINES OUTSIDE THE ABOVE DESCRIBED EASEMENT PREMISES OR THE RIGHT OF ACCESS, INGRESS AND EGRESS TO AND FROM ANY OF THE WITHIN DESCRIBED PREMISES FOR EXERCISING ANY OF THE PURPOSES OF THIS RIGHT-OF-WAY AND EASEMENT GRANT.

GRANTOR:

SUGAR CHESTNUT, LLC, AN OHIO LIMITED LIABILITY COMPANY. BY: FOREST CITY LAND GROUP, INC. MEMBER Robert F. Monchein, President

GRANTEEES:

COLUMBIA GAS OF OHIO, INC. ALLTEL Jeffrey B. Gwynes. OHIO EDISON COMPANY STEPHEN G. YANKHOFF AT&T BROAD BAND



LEGEND: I.P. SET, I.P. FOUND, MON. BOX

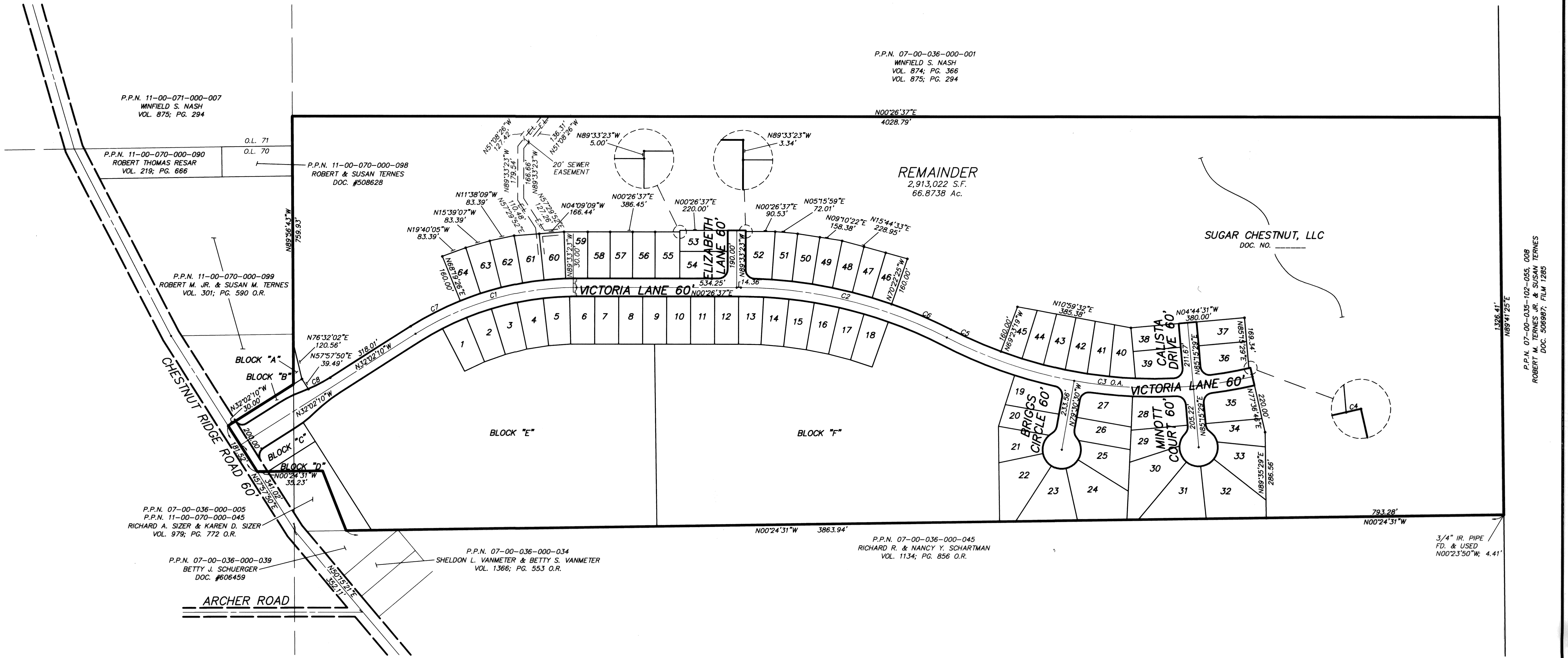
AREA CHART

Table with columns: DESCRIPTION, CITY OF NORTH RIDGEVILLE, EATON TOWNSHIP. Rows include Sublots (64), Blocks (A-F), Remainder Lands, Right-of-Way, Existing Right-of-Way, and Total.

Professional seal for Donald G. Bohning & Associates, Inc. Civil Engineering & Surveying. Includes date APR, 2001 and scale 1"=600'.

CURVE TABLE

CURVE	RADIUS	LENGTH	TANGENT	CHORD	BEARING	DELTA
C1	1000.00'	566.88'	291.28'	559.32'	N15°47'46"W	32°28'47"
C2	1500.00'	714.30'	364.06'	707.57'	N14°05'09"E	27°17'03"
C3	1500.00'	1050.21'	547.66'	1028.89'	N07°40'13"E	40°06'54"
C4	1470.00'	5.61'	2.81'	5.61'	N12°16'40"W	00°13'08"
C5	1470.00'	182.58'	91.41'	182.47'	N24°10'11"E	07°07'00"
C6	1530.00'	216.34'	108.35'	216.16'	N23°40'38"E	08°06'05"
C7	1030.00'	186.24'	93.38'	185.99'	N26°51'22"W	10°21'36"
C8	500.00'	82.48'	41.33'	82.39'	N27°18'37"W	09°27'06"



P.P.N. 11-00-071-000-007
WINFIELD S. NASH
VOL. 875; PG. 294

P.P.N. 07-00-036-000-001
WINFIELD S. NASH
VOL. 874; PG. 366
VOL. 875; PG. 294

P.P.N. 11-00-070-000-090
ROBERT THOMAS RESAR
VOL. 219; PG. 666

P.P.N. 11-00-070-000-098
ROBERT & SUSAN TERNES
DOC. #508628

P.P.N. 11-00-070-000-099
ROBERT M. JR. & SUSAN M. TERNES
VOL. 301; PG. 590 O.R.

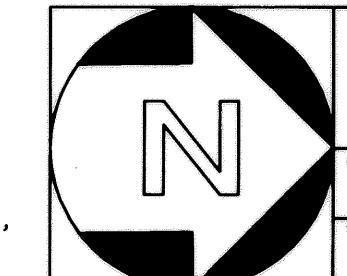
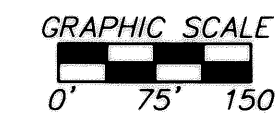
P.P.N. 07-00-036-000-005
P.P.N. 11-00-070-000-045
RICHARD A. SIZER & KAREN D. SIZER
VOL. 979; PG. 772 O.R.


P.P.N. 07-00-036-000-039
BETTY J. SCHUERGER
DOC. #606459

P.P.N. 07-00-036-000-034
SHELDON L. VANMETER & BETTY S. VANMETER
VOL. 1366; PG. 553 O.R.

P.P.N. 07-00-036-000-045
RICHARD R. & NANCY Y. SCHARTMAN
VOL. 1134; PG. 856 O.R.

P.P.N. 07-00-036-102-055, 008
ROBERT M. TERNES JR. & SUSAN TERNES
DOC. 506987; FILM 1285




DONALD G. BOHNING & ASSOCIATES, INC.
 CIVIL ENGINEERING & SURVEYING
 7870 HUB PARKWAY • VALLEY VIEW, OHIO 44125
 PHONE: (216) 842-1130 FAX: (216) 842-1132

HORIZ. SCALE	DATE	2
1" = 150'	D.B. E.K. FEB., 2001	5
VERT. SCALE	FILE NO.	
	287310-2	2873-10

REMAINDER
2,913,022 S.F.
66.8738 AC.

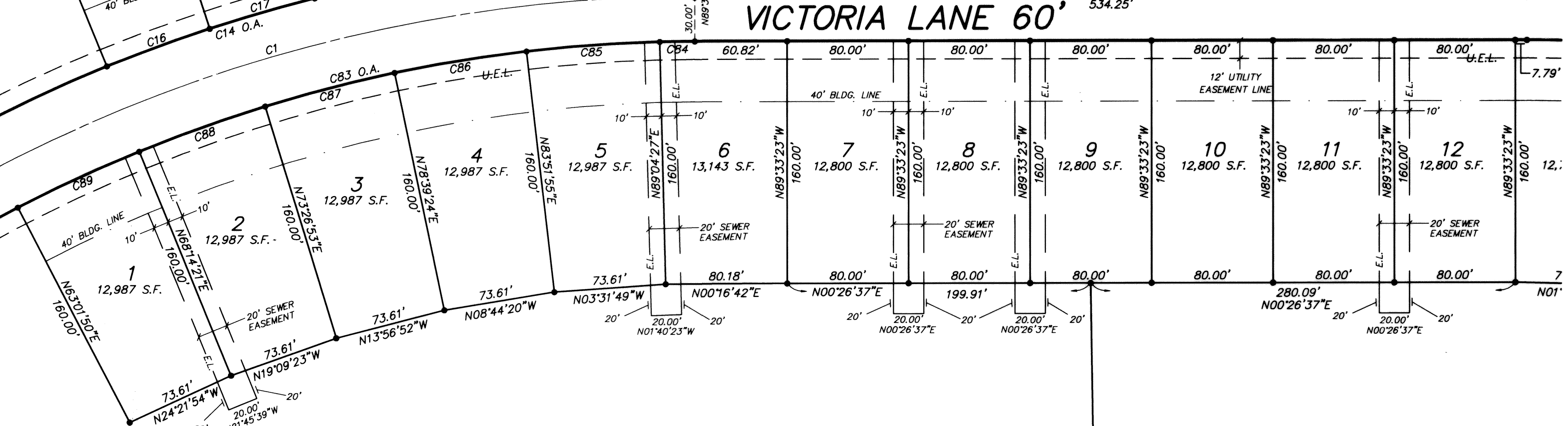
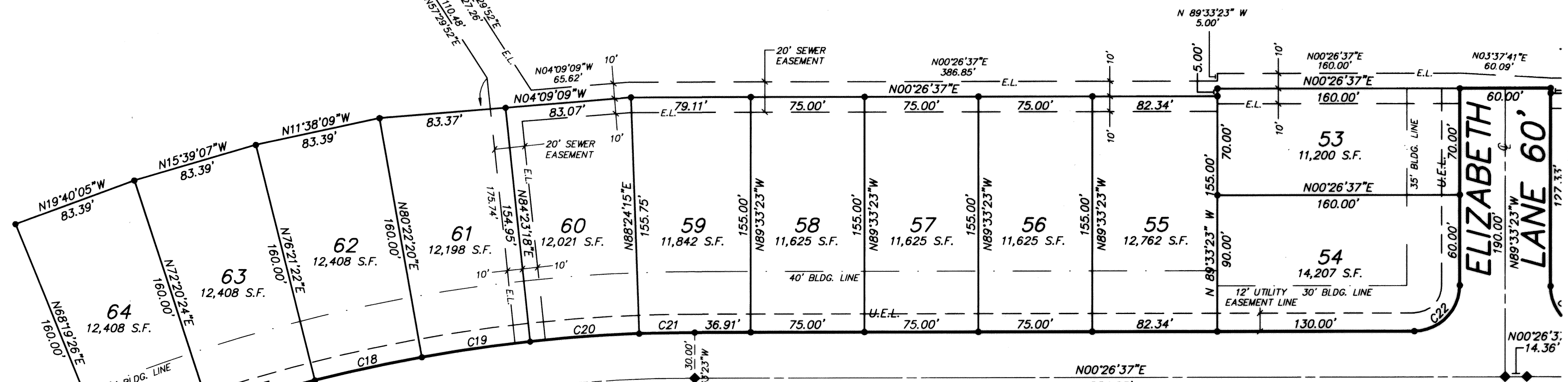
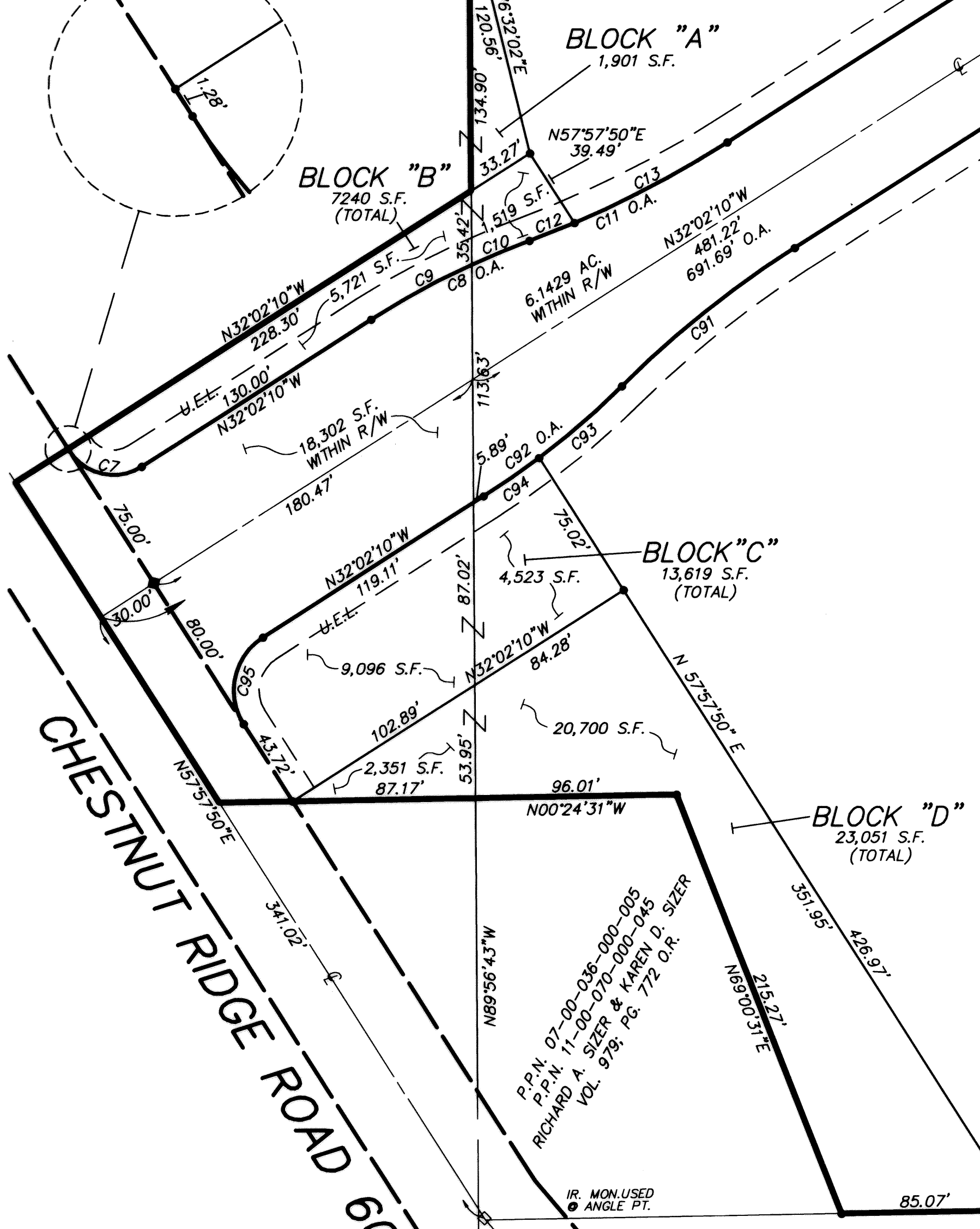
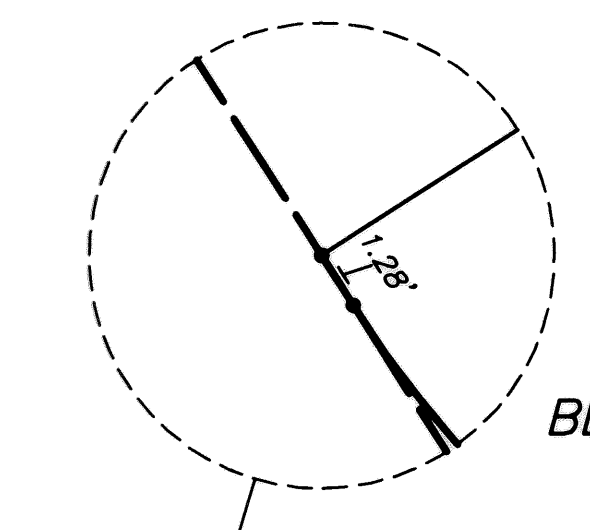
EATON TOWNSHIP
CITY OF NORTH RIDGEVILLE

P.P.N. 11-00-070-000-099
ROBERT M. JR. & SUSAN M. TERNES
VOL. 301 PG. 590 O.R.
(REMAINDER)

P.P.N. 07-00-036-000-003
SUGAR CHESTNUT, LLC
DOC. NO. _____

P.P.N. 11-00-070-000-002
ROBERT M. JR. & SUSAN M. TERNES
VOL. 301 PG. 590 O.R.
(REMAINDER)

P.P.N. 07-00-036-000-004
SUGAR CHESTNUT, LLC
DOC. NO. _____

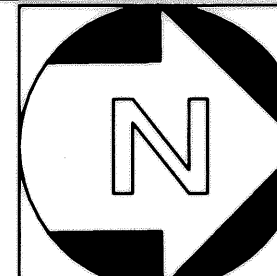
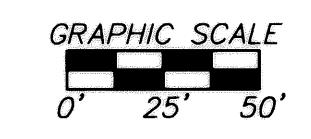


BLOCK "E"
627,572 S.F.
14.4071 AC.

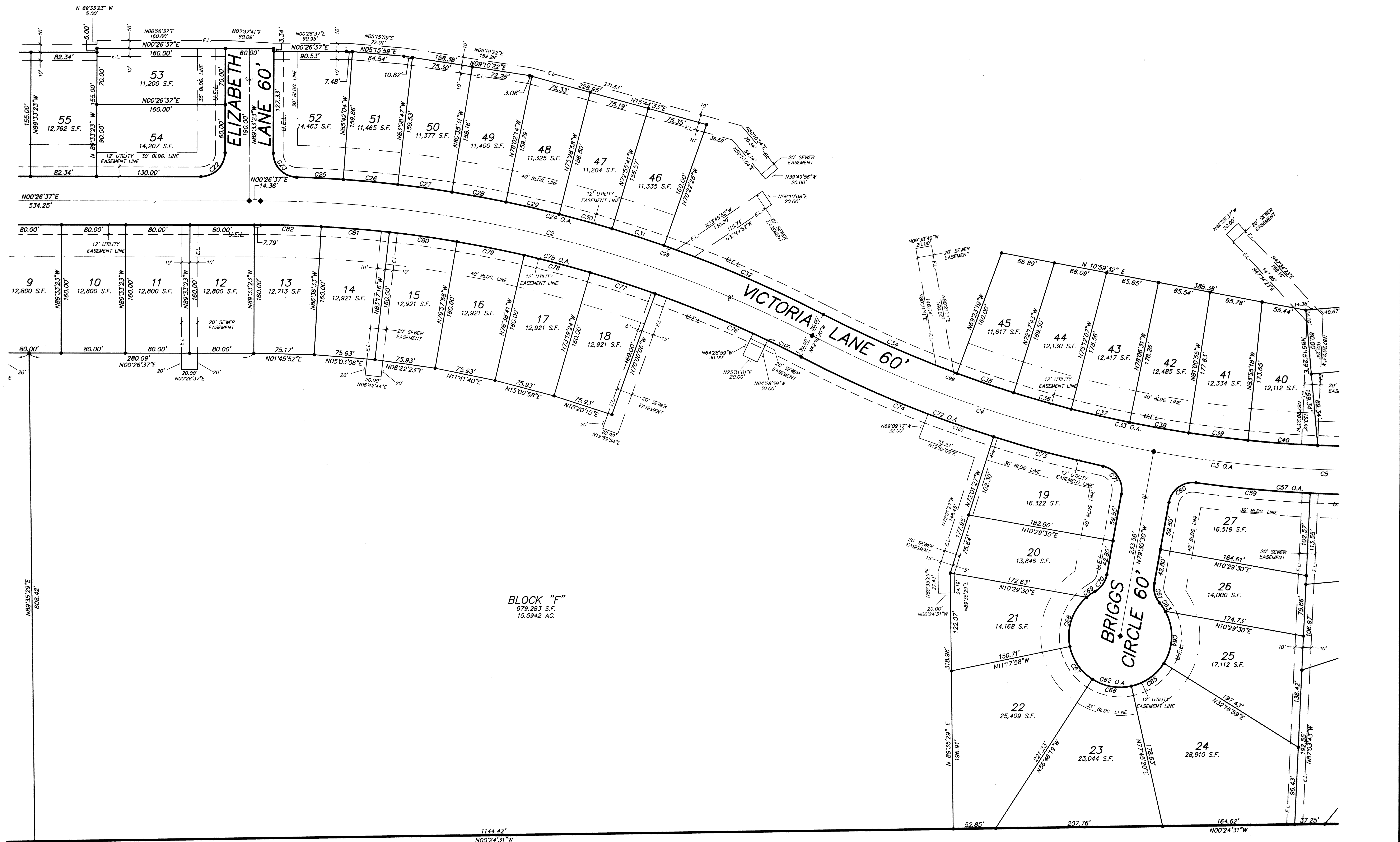
CHESTNUT RIDGE ROAD 60'

P.P.N. 07-00-036-000-005
P.P.N. 11-00-070-000-045
RICHARD A. SIZER & KAREN D. SIZER
VOL. 978, PG. 772 O.R.

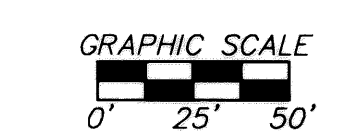
IR. MON. USED
ANGLE PT.



DONALD G. BOHNING & ASSOCIATES, INC. CIVIL ENGINEERING & SURVEYING 7079 HUB PARKWAY • VALLEY VIEW, OHIO 44125 PHONE: (216) 842-1130 FAX: (216) 842-1132			
HORIZ. SCALE 1" = 50'	DWG. NO. J.H. G.W.	DATE APR., 2001	SHEET NO. 3
VERT. SCALE 1" = 25'	FILE NO. 287310-3	ORDER NO. 2873-10	TOTAL SHEETS 5



BLOCK "F"
 679,283 S.F.
 15.5942 AC.



DN DONALD G. BOHNING & ASSOCIATES, INC.
 CIVIL ENGINEERING & SURVEYING
 7878 HUB PARKWAY • VALLEY VIEW, OHIO 44125
 PHONE: (216) 842-1130 FAX: (216) 842-1132

DATE	2001	4
BY	D.B. E.K.	
FILE NO.	287310-4	
ORDER NO.	2873-10	

1" = 50'

CURVE TABLE

CURVE	RADIUS	LENGTH	TANGENT	CHORD	BEARING	DELTA	CURVE	RADIUS	LENGTH	TANGENT	CHORD	BEARING	DELTA	CURVE	RADIUS	LENGTH	TANGENT	CHORD	BEARING	DELTA
C1	1000.00'	566.88'	291.28'	559.32'	N15°47'46"W	32°28'47"	C15	1030.00'	186.24'	93.38'	185.99'	N26°51'22"W	10°21'36"	C28	1530.00'	68.22'	34.11'	68.21'	N10°41'07"E	2°33'17"
C2	1500.00'	714.30'	364.06'	707.57'	N14°05'09"E	27°17'03"	C16	1030.00'	72.20'	36.11'	72.18'	N19°40'05"W	4°00'58"	C29	1530.00'	68.22'	34.11'	68.21'	N13°14'24"E	2°33'17"
C3 O.A.	1500.00'	1050.21'	547.66'	1028.89'	N07°40'13"E	40°06'54"	C17	1030.00'	72.20'	36.11'	72.18'	N15°39'07"W	4°00'58"	C30	1530.00'	68.22'	34.11'	68.21'	N15°47'40"E	2°33'17"
C4	1500.00'	451.24'	227.34'	449.54'	N19°06'35"E	17°14'10"	C18	1030.00'	72.20'	36.11'	72.18'	N11°38'09"W	4°00'58"	C31	1530.00'	68.22'	34.11'	68.21'	N18°20'57"E	2°33'17"
C5	1500.00'	398.82'	200.59'	397.65'	N02°52'29"E	15°14'02"	C19	1030.00'	72.20'	36.11'	72.18'	N07°37'11"W	4°00'58"	C32	1530.00'	216.34'	108.35'	216.16'	N23°40'38"E	8°06'05"
C6	1500.00'	200.15'	100.22'	200.00'	N08°33'53"W	7°38'42"	C20	1030.00'	72.20'	36.11'	72.18'	N03°36'13"W	4°00'58"	C33 O.A.	1470.00'	771.79'	395.01'	762.96'	N12°41'13"E	30°04'55"
C7	25.00'	39.27'	25.00'	35.36'	N12°57'50"E	90°00'00"	C21	1030.00'	36.66'	18.33'	36.66'	N00°34'34"E	2°02'22"	C34	1470.00'	182.58'	91.41'	182.47'	N24°10'11"E	7°07'00"
C8 O.A.	400.00'	84.48'	42.40'	84.33'	N25°59'07"W	12°06'05"	C22	30.00'	47.12'	30.00'	42.43'	N44°33'23"W	90°00'00"	C35	1470.00'	74.57'	37.29'	74.57'	N19°09'29"E	2°54'24"
C9	400.00'	54.65'	27.37'	54.61'	N28°07'19"W	7°49'43"	C23	30.00'	46.25'	29.13'	41.80'	N46°16'55"E	88°19'24"	C36	1470.00'	74.57'	37.29'	74.57'	N16°15'05"E	2°54'24"
C10	400.00'	29.83'	14.92'	29.82'	N22°04'16"W	4°16'23"	C24 O.A.	1530.00'	683.82'	347.72'	678.14'	N14°55'26"E	25°36'28"	C37	1470.00'	74.57'	37.29'	74.57'	N13°20'41"E	2°54'24"
C11 O.A.	500.00'	105.61'	53.00'	105.41'	N25°59'07"W	12°06'05"	C25	1530.00'	58.18'	29.09'	58.18'	N03°12'34"E	2°10'43"	C38	1470.00'	74.57'	37.29'	74.57'	N10°26'17"E	2°54'24"
C12	500.00'	23.12'	11.56'	23.12'	N21°15'34"W	2°38'59"	C26	1530.00'	68.22'	34.11'	68.21'	N05°34'34"E	2°33'17"	C39	1470.00'	74.57'	37.29'	74.57'	N07°31'54"E	2°54'24"
C13	500.00'	82.48'	41.33'	82.39'	N27°18'37"W	9°27'06"	C27	1530.00'	68.22'	34.11'	68.21'	N08°07'51"E	2°33'17"	C40	1470.00'	87.08'	43.55'	87.06'	N04°22'53"E	3°23'38"
C14 O.A.	1030.00'	583.88'	300.02'	576.10'	N15°47'46"W	32°28'47"	C28	1530.00'	68.22'	34.11'	68.21'	N10°41'07"E	2°33'17"	C41	1470.00'	129.27'	64.67'	129.22'	N00°09'54"E	5°02'18"

C42	30.00'	48.37'	31.28'	43.30'	N48°32'53"W	92°23'17"	C46	30.00'	45.97'	28.87'	41.60'	N50°50'39"W	87°47'45"
C43	30.00'	48.37'	31.28'	43.30'	N39°03'50"E	92°23'17"	C47	30.00'	26.36'	14.10'	25.52'	N60°05'26"E	50°20'06"
C44	1470.00'	129.27'	64.67'	129.22'	N09°38'57"W	5°02'18"	C48 O.A.	64.00'	313.51'	53.07'	81.70'	N04°44'31"W	280°40'12"
C45	1530.00'	145.29'	72.70'	145.24'	N09°40'00"W	5°26'27"	C49	64.00'	44.54'	23.21'	43.65'	N54°51'36"E	39°52'28"
C46	30.00'	45.97'	28.87'	41.60'	N50°50'39"W	87°47'45"	C50	64.00'	59.98'	32.40'	57.81'	N78°21'17"W	53°41'46"
C47	30.00'	26.36'	14.10'	25.52'	N60°05'26"E	50°20'06"	C51	64.00'	51.20'	27.06'	49.85'	N28°35'18"W	45°50'12"
C48 O.A.	64.00'	313.51'	53.07'	81.70'	N04°44'31"W	280°40'12"	C52	64.00'	51.20'	27.06'	49.85'	N17°14'54"E	45°50'12"
C49	64.00'	44.54'	23.21'	43.65'	N54°51'36"E	39°52'28"	C53	64.00'	60.18'	32.52'	57.99'	N67°06'20"E	53°52'40"
C50	64.00'	59.98'	32.40'	57.81'	N78°21'17"W	53°41'46"	C54	64.00'	46.41'	24.28'	45.40'	N65°10'53"W	41°32'54"
C51	64.00'	51.20'	27.06'	49.85'	N28°35'18"W	45°50'12"	C55	30.00'	26.36'	14.10'	25.52'	N69°34'28"W	50°20'06"
C52	64.00'	51.20'	27.06'	49.85'	N17°14'54"E	45°50'12"	C56	30.00'	45.97'	28.87'	41.60'	N41°21'36"E	87°47'45"
C53	64.00'	60.18'	32.52'	57.99'	N67°06'20"E	53°52'40"	C57 O.A.	1530.00'	289.08'	144.97'	288.65'	N02°52'29"E	10°49'31"
C54	64.00'	46.41'	24.28'	45.40'	N65°10'53"W	41°32'54"	C58	1530.00'	146.22'	73.17'	146.17'	N00°12'00"E	5°28'33"
C55	30.00'	26.36'	14.10'	25.52'	N69°34'28"W	50°20'06"	C59	1530.00'	142.85'	71.48'	142.80'	N05°36'46"E	5°20'58"
C56	30.00'	45.97'	28.87'	41.60'	N41°21'36"E	87°47'45"	C60	30.00'	45.97'	28.87'	41.60'	N35°36'37"W	87°47'45"
C57 O.A.	1530.00'	289.08'	144.97'	288.65'	N02°52'29"E	10°49'31"	C61	30.00'	26.36'	14.10'	25.52'	N75°19'27"E	50°20'06"
C58	1530.00'	146.22'	73.17'	146.17'	N00°12'00"E	5°28'33"	C62 O.A.	64.00'	313.51'	53.07'	81.70'	N10°29'30"E	280°40'12"
C59	1530.00'	142.85'	71.48'	142.80'	N05°36'46"E	5°20'58"	C63	64.00'	12.80'	6.42'	12.78'	N55°53'18"E	11°27'47"
C60	30.00'	45.97'	28.87'	41.60'	N35°36'37"W	87°47'45"	C64	64.00'	67.76'	37.45'	64.64'	N88°02'55"W	60°39'47"
C61	30.00'	26.36'	14.10'	25.52'	N75°19'27"E	50°20'06"	C65	64.00'	50.79'	26.82'	49.47'	N34°58'51"W	45°28'21"
C62 O.A.	64.00'	313.51'	53.07'	81.70'	N10°29'30"E	280°40'12"	C66	64.00'	50.79'	26.82'	49.47'	N10°29'30"E	45°28'21"
C63	64.00'	12.80'	6.42'	12.78'	N55°53'18"E	11°27'47"	C67	64.00'	50.79'	26.82'	49.47'	N55°57'52"E	45°28'21"
C64	64.00'	67.76'	37.45'	64.64'	N88°02'55"W	60°39'47"	C68	64.00'	67.76'	37.45'	64.64'	N70°58'04"W	60°39'47"
C65	64.00'	50.79'	26.82'	49.47'	N34°58'51"W	45°28'21"	C69	64.00'	12.80'	6.42'	12.78'	N34°54'17"W	11°27'47"
C66	64.00'	50.79'	26.82'	49.47'	N10°29'30"E	45°28'21"	C70	30.00'	26.36'	14.10'	25.52'	N54°20'27"W	50°20'06"
C67	64.00'	50.79'	26.82'	49.47'	N55°57'52"E	45°28'21"	C71	30.00'	45.97'	28.87'	41.60'	N56°35'38"E	87°47'45"
C68	64.00'	67.76'	37.45'	64.64'	N70°58'04"W	60°39'47"	C72 O.A.	1530.00'	401.40'	201.86'	400.25'	N20°12'43"E	15°01'55"
C69	64.00'	12.80'	6.42'	12.78'	N34°54'17"W	11°27'47"	C73	1530.00'	140.99'	70.54'	140.94'	N15°20'09"E	5°16'47"
C70	30.00'	26.36'	14.10'	25.52'	N54°20'27"W	50°20'06"	C74	1530.00'	260.42'	130.52'	260.10'	N22°51'06"E	9°45'08"
C71	30.00'	45.97'	28.87'	41.60'	N56°35'38"E	87°47'45"	C75 O.A.	1470.00'	700.01'	356.77'	693.42'	N14°05'09"E	27°17'03"
C72 O.A.	1530.00'	401.40'	201.86'	400.25'	N20°12'43"E	15°01'55"	C76	1470.00'	198.31'	99.31'	198.16'	N23°51'47"E	7°43'47"
C73	1530.00'	140.99'	70.54'	140.94'	N15°20'09"E	5°16'47"	C77	1470.00'	85.22'	42.62'	85.21'	N18°20'15"E	3°19'17"
C74	1530.00'	260.42'	130.52'	260.10'	N22°51'06"E	9°45'08"	C78	1470.00'	85.22'	42.62'	85.21'	N15°00'58"E	3°19'17"
C75 O.A.	1470.00'	700.01'	356.77'	693.42'	N14°05'09"E	27°17'03"	C79	1470.00'	85.22'	42.62'	85.21'	N11°41'40"E	3°19'17"
C76	1470.00'	198.31'	99.31'	198.16'	N23°51'47"E	7°43'47"	C80	1470.00'	85.22'	42.62'	85.21'	N08°22'23"E	3°19'17"
C77	1470.00'	85.22'	42.62'	85.21'	N18°20'15"E	3°19'17"	C81	1470.00'	85.22'	42.62'	85.21'	N05°03'06"E	3°19'17"
C78	1470.00'	85.22'	42.62'	85.21'	N15°00'58"E	3°19'17"	C82	1470.00'	75.61'	37.82'	75.61'	N01°55'02"E	2°56'50"
C79	1470.00'	85.22'	42.62'	85.21'	N11°41'40"E	3°19'17"	C83 O.A.	970.00'	549.87'	282.54'	542.54'	N15°47'46"W	32°28'47"
C80	1470.00'	85.22'	42.62'	85.21'	N08°22'23"E	3°19'17"	C84	970.00'	23.19'	11.59'	23.19'	N00°14'28"W	1°22'10"
C81	1470.00'	85.22'	42.62'	85.21'	N05°03'06"E	3°19'17"	C85	970.00'	88.18'	44.12'	88.15'	N03°31'49"W	5°12'31"
C82	1470.00'	75.61'	37.82'	75.61'	N01°55'02"E	2°56'50"	C86	970.00'	88.18'	44.12'	88.15'	N08°44'20"W	5°12'31"
C83 O.A.	970.00'	549.87'	282.54'	542.54'	N15°47'46"W	32°28'47"	C87	970.00'	88.18'	44.12'	88.15'	N13°56'52"W	5°12'31"
C84	970.00'	23.19'	11.59'	23.19'	N00°14'28"W	1°22'10"	C88	970.00'	88.18'	44.12'	88.15'	N19°09'23"W	5°12'31"
C85	970.00'	88.18'	44.12'	88.15'	N03°31'49"W	5°12'31"	C89	970.00'	88.18'	44.12'	88.15'	N24°21'54"W	5°12'31"
C86	970.00'	88.18'	44.12'	88.15'	N08°44'20"W	5°12'31"	C90	970.00'	85.78'	42.92'	85.75'	N29°30'10"W	5°04'00"
C87	970.00'	88.18'	44.12'	88.15'	N13°56'52"W	5°12'31"	C91	500.00'	105.61'	53.00'	105.41'	N38°05'13"W	12°06'05"
C88	970.00'	88.18'	44.12'	88.15'	N19°09'23"W	5°12'31"	C92 O.A.	400.00'	84.48'	42.40'	84.33'	N38°05'13"W	12°06'05"
C89	970.00'	88.18'	44.12'	88.15'	N24°21'54"W	5°12'31"	C93	400.00'	52.28'	26.18'	52.24'	N40°23'36"W	7°29'19"
C90	970.00'	85.78'	42.92'	85.75'	N29°30'10"W	5°04'00"	C94	400.00'	32.20'	16.11'	32.19'	N34°20'33"W	4°36'46"
C91	500.00'	105.61'	53.00'	105.41'	N38°05'13"W	12°06'05"	C95	30.00'	47.12'	30.00'	42.43'	N77°02'10"W	90°00'00"
C92 O.A.	400.00'	84.48'	42.40'	84.33'	N38°05'13"W	12°06'05"	C96	1470.00'	5.61'	2.81'	5.61'	N12°16'40"W	0°13'08"
C93	400.00'	52.28'	26.18'	52.24'	N40°23'36"W	7°29'19"	C97 O.A.	1470.00'	67.49'	134.88'	134.83'	N09°45'31"W	5°15'26"
C94	400.00'	32.20'	16.11'	32.19'	N34°20'33"W	4°36'46"	C98	1530.00'	15.90'	7.95'	15.90'	N19°55'27"E	0°35'43"
C95	30.00'	47.12'	30.00'	42.43'	N77°02'10"W	90°00'00"	C99	1470.00'	4.41'	2.21'	4.41'	N69°44'47"E	0°10'19"
C96	1470.00'	5.61'	2.81'	5.61'	N12°16'40"W	0°13'08"	C100	1470.00'	46.73'	23.37'	46.72'	N26°49'02"E	1°49'16"
C97 O.A.	1470.00'	67.49'	134.88'	134.83'	N09°45'31"W	5°15'26"	C101	1530.00'	86.63'	43.33'	86.62'	N19°35'52"E	3°14'39"
C98	1530.00'	15.90'	7.95'	15.90'	N19°55'27"E	0°35'							