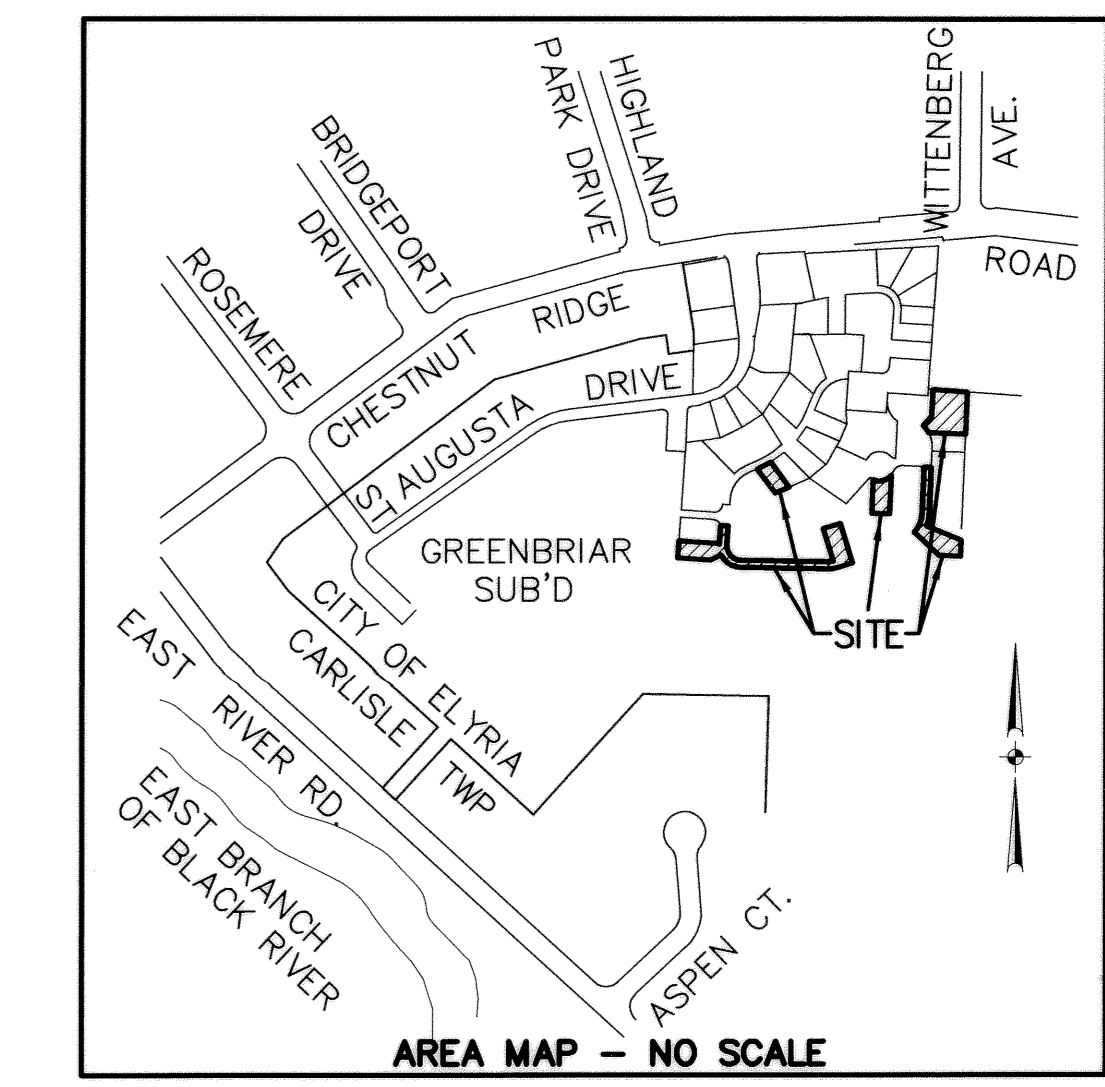


LEGEND

- 5/8" CAPPED REBAR SET
- ⊙ IRON PIN FOUND
- ⊞ MONUMENT BOX FOUND

TOTAL AREA PHASE 12
1.3294 AC.



| CURVE DATA | | | | | | |
|------------|---------|---------|---------|---------|-------------|-----------|
| CURVE | RADIUS | LENGTH | TANGENT | CHORD | BEARING | DELTA |
| C1 | 25.00' | 39.27' | 25.00' | 35.36' | N48°54'17"E | 90°00'00" |
| C2 | 89.00' | 97.60' | 54.36' | 92.78' | S35°19'14"W | 62°49'55" |
| C3 | 24.09' | 28.52' | 16.20' | 26.88' | N52°10'47"W | 67°49'53" |
| C4 | 111.00' | 41.42' | 20.95' | 41.18' | S56°02'47"W | 21°22'49" |
| C5 | 289.00' | 92.98' | 46.90' | 92.58' | N57°31'10"E | 18°26'05" |
| C6 | 289.00' | 62.80' | 31.52' | 62.67' | N29°00'29"E | 12°26'59" |
| C7 | 111.00' | 61.91' | 31.78' | 61.11' | S38°45'42"W | 31°57'26" |
| C8 | 89.00' | 106.91' | 60.97' | 100.60' | N57°11'42"E | 68°49'27" |
| C9 | 311.00' | 48.48' | 24.29' | 48.43' | N35°46'40"E | 8°55'51" |
| C10 | 311.00' | 89.98' | 45.31' | 89.67' | N58°26'52"E | 16°34'40" |
| C11 | 311.00' | 47.79' | 23.94' | 47.74' | N54°33'40"E | 8°48'16" |
| C12 | 311.00' | 42.19' | 21.13' | 42.16' | N62°51'00"E | 7°46'24" |

CONTINUED ON SHEET 3

SHEET INDEX

| SHEET NO. | DESCRIPTION |
|-----------|------------------------------|
| 1 | SURVEY MAP & MISC. |
| 2 | SURVEY MAP & MISC. CONTINUED |
| 3 | CURVE DATA & OWNERSHIP TABLE |
| 4 | FLOOR & FOUNDATION PLANS |
| 5 | ELEVATION VIEWS |

TRANSFERRED
IN COMPLIANCE WITH SEC. 319-202
OHIO REV. CODE
NOV 21 2001
MARK R. STEWART
ORAIN COUNTY AUDITOR

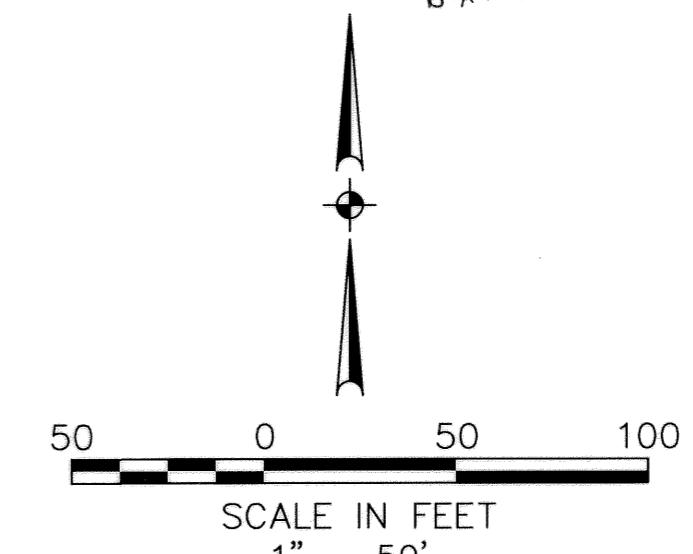
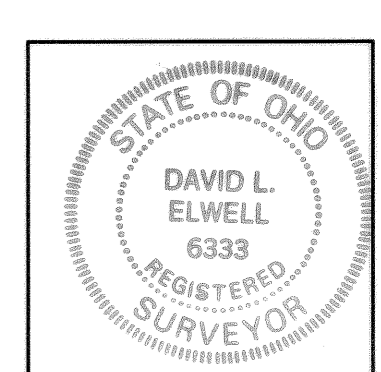
NOV 21 2001
RECEIVED FOR RECORD
at 3:31 o'clock P.M. in RECORDED
VOL. 70 MARY ANN JAMISON
PAGE 38, 37
40, 41, 42
Box: rec. 2/16/02 BH

CERTIFICATION
THIS IS TO CERTIFY THAT THE ATTACHED DRAWINGS CORRECTLY REPRESENT THE BUILDINGS AS CONSTRUCTED AND THAT THERE ARE NO ENCROACHMENTS ON ABUTTING PROPERTIES, EXCEPT AS SHOWN.

Lynn S. Miggins
LYNN S. MIGGINS
PROFESSIONAL ENGINEER NO. 46837



David L. Elwell
DAVID L. ELWELL
PROFESSIONAL SURVEYOR NO. 6333

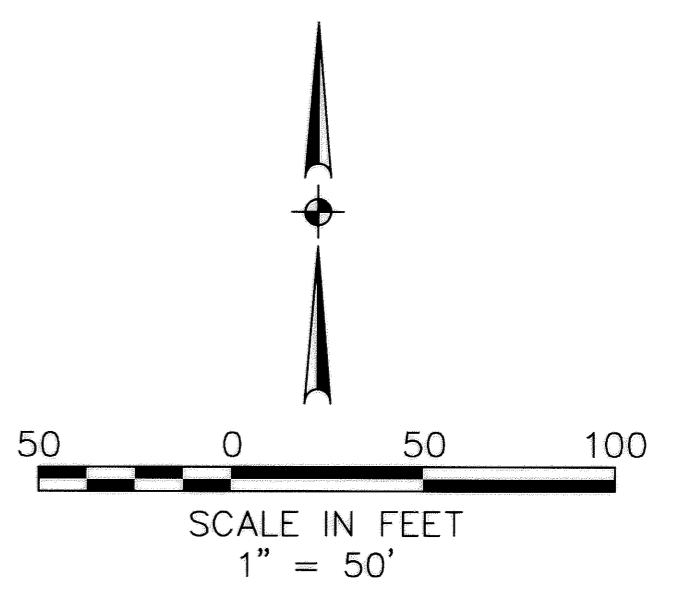
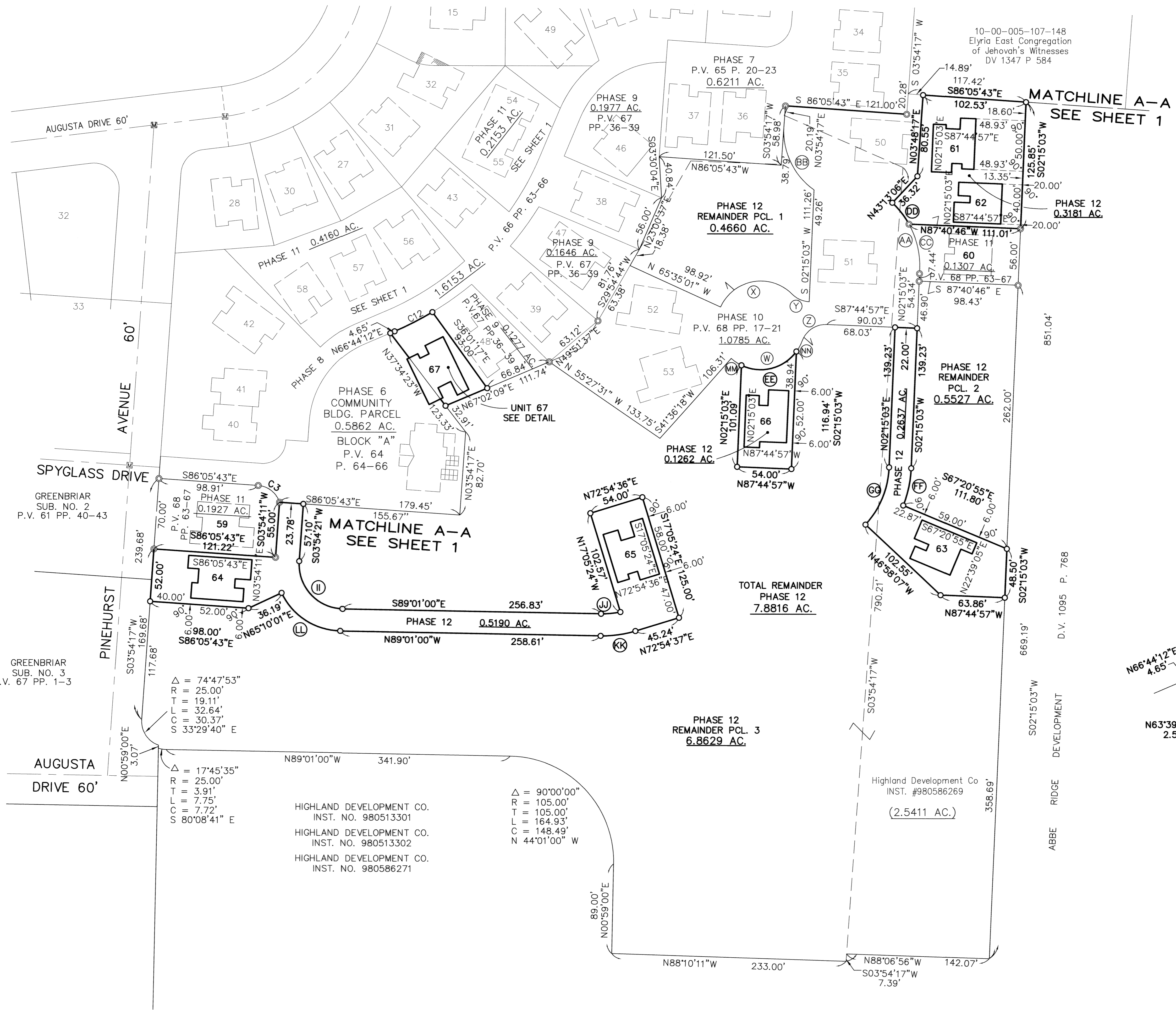


| DATE | DESCRIPTION | BY |
|----------|----------------|-----|
| 10-24-01 | ORIGINAL ISSUE | ABR |

KS ASSOCIATES
KS ASSOCIATES, INC.
260 Burns Road, Suite 100
P.O. Box 569
Elyria, Ohio 44036
Phone (440) 365-4730
Fax (440) 365-4790
mailto:mailroom@ksassoc.com
www.ksassoc.com

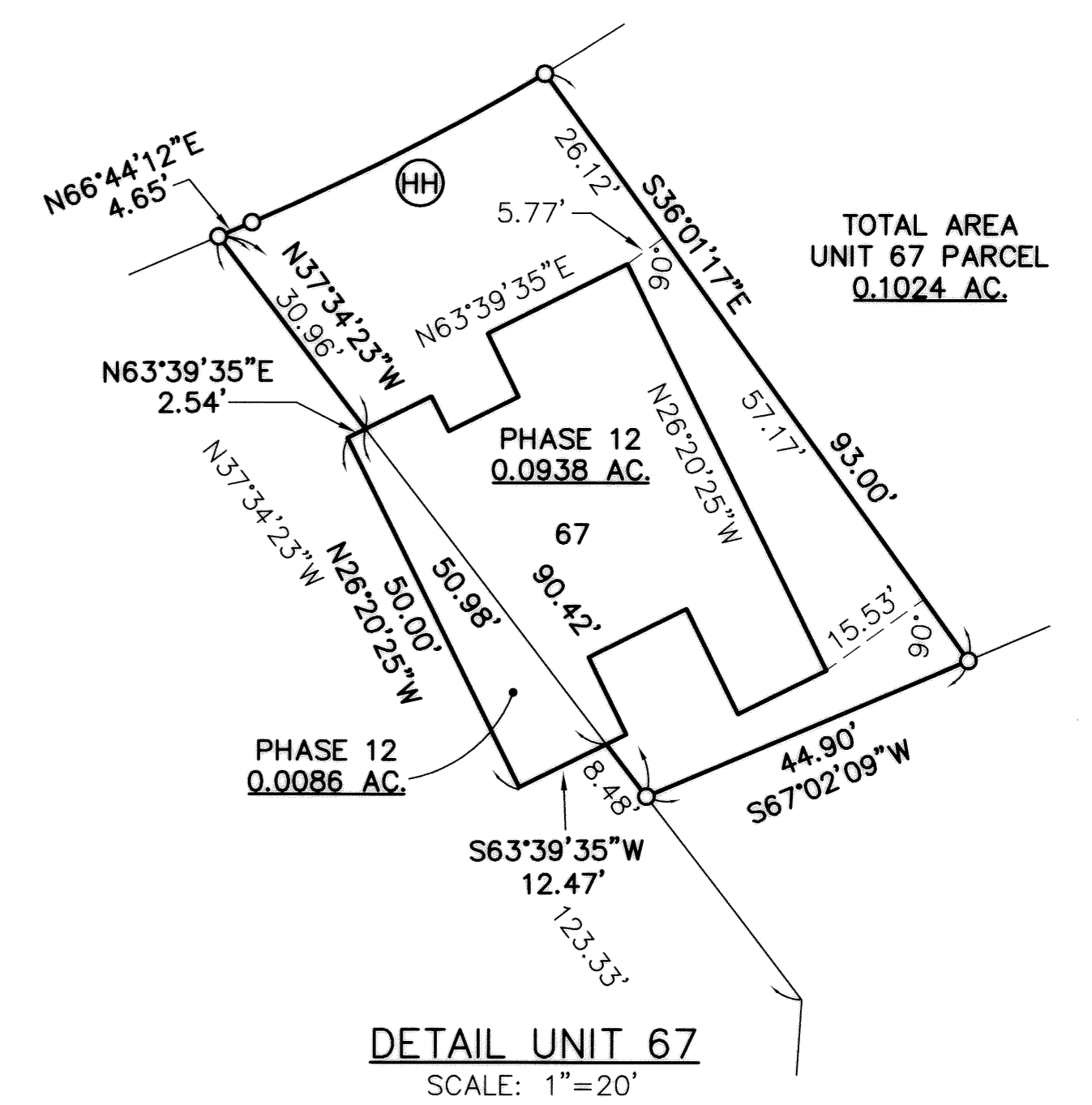
STONEHEDGE CONDOMINIUMS
PHASE NO. 12
PART OF CARLISLE TOWNSHIP SECTION NO. 5 & PART OF
BLOCK "A" IN STONEHEDGE CONDOMINIUMS PHASE 6 (P.V. 64, PP. 64-66)
CITY OF ELYRIA COUNTY OF LORAIN STATE OF OHIO

SHEET
1 OF
5
JOB NO.
92424-CP12



TOTAL AREA PHASE 12
1.3294 AC.

FOR CURVE INFORMATION SEE SHEETS 1 & 3



DATE: 10-23-01.DWG. PATH: R:\92424C12\LDIT\DWG\12-SURV02

$\Delta = 74^{\circ}47'53''$
 $R = 25.00'$
 $T = 19.11'$
 $L = 32.64'$
 $C = 30.37'$
 $S = 33^{\circ}29'40'' E$

$\Delta = 17^{\circ}45'35''$
 $R = 25.00'$
 $T = 3.91'$
 $L = 7.75'$
 $C = 7.72'$
 $S = 80^{\circ}08'41'' E$

HIGHLAND DEVELOPMENT CO.
 INST. NO. 980513301

HIGHLAND DEVELOPMENT CO.
 INST. NO. 980513302

HIGHLAND DEVELOPMENT CO.
 INST. NO. 980586271

$\Delta = 90^{\circ}00'00''$
 $R = 105.00'$
 $T = 105.00'$
 $L = 164.93'$
 $C = 148.49'$
 $N = 44^{\circ}01'00'' W$

| REVISIONS | DATE | DESCRIPTION | BY |
|-----------|----------|----------------|-----|
| | 10-24-01 | ORIGINAL ISSUE | ABR |

KS ASSOCIATES

KS ASSOCIATES, INC.
 260 Burns Road, Suite 100
 P.O. Box 569
 Elyria, Ohio 44036
 Phone (440) 365-4730
 Fax (440) 365-4790
 mailroom@ksassoc.com
 www.ksassoc.com

STONEHEDGE CONDOMINIUMS
PHASE NO. 12

PART OF ORIGINAL CARLISLE TOWNSHIP SECTION NO. 5 & PART OF BLOCK "A" IN STONEHEDGE CONDOMINIUMS PHASE 6 (P.V. 64, PP. 64-66)
 CITY OF ELYRIA COUNTY OF LORAIN STATE OF OHIO

SHEET **2** OF **5**

JOB NO. **92424-CP12**

OWNERSHIP PERCENTAGES

| UNIT NO. | SQ. FT. | ELEV. F.F. | % OWNERSHIP |
|--------------|------------------|------------|----------------|
| 1 | 1661.92 | 756.59 | 1.6760 |
| 2 | 1602.38 | 756.59 | 1.6160 |
| 3 | 1191.64 | 755.86 | 1.2017 |
| 4 | 1214.22 | 755.86 | 1.2245 |
| 5 | 1602.38 | 757.42 | 1.6160 |
| 6 | 1661.92 | 757.42 | 1.6760 |
| 7 | 1658.47 | 756.00 | 1.6725 |
| 8 | 1661.92 | 756.00 | 1.6760 |
| 9 | 1196.28 | 756.42 | 1.2064 |
| 10 | 1213.70 | 756.42 | 1.2240 |
| 11 | 1196.28 | 756.76 | 1.2064 |
| 12 | 1213.70 | 756.76 | 1.2240 |
| 13 | 1599.80 | 754.87 | 1.6134 |
| 14 | 1393.43 | 756.44 | 1.4052 |
| 15 | 1713.47 | 756.37 | 1.7280 |
| 16 | 1733.47 | 756.37 | 1.7482 |
| 17 | 1658.47 | 757.40 | 1.6725 |
| 18 | 1661.92 | 757.41 | 1.6760 |
| 19 | 1196.28 | 755.58 | 1.2064 |
| 20 | 1393.43 | 757.01 | 1.4052 |
| 21 | 1393.43 | 757.56 | 1.4052 |
| 22 | 1393.43 | 754.55 | 1.4052 |
| 23 | 1196.28 | 754.53 | 1.2064 |
| 24 | 1213.70 | 754.54 | 1.2240 |
| 25 | 1658.47 | 758.13 | 1.6725 |
| 26 | 1661.92 | 758.13 | 1.6760 |
| 27 | 1393.43 | 755.19 | 1.4052 |
| 28 | 1393.43 | 754.43 | 1.4052 |
| 29 | 1393.43 | 757.07 | 1.4052 |
| 30 | 1196.28 | 756.16 | 1.2064 |
| 31 | 1196.28 | 755.32 | 1.2064 |
| 32 | 1393.43 | 756.45 | 1.4052 |
| 33 | 1393.43 | 756.64 | 1.4052 |
| 34 | 1213.70 | 753.83 | 1.2240 |
| 35 | 1393.43 | 753.61 | 1.4052 |
| 36 | 1393.43 | 754.43 | 1.4052 |
| 37 | 1717.06 | 754.06 | 1.7316 |
| 38 | 1717.06 | 754.20 | 1.7316 |
| 39 | 1717.06 | 755.50 | 1.7316 |
| 40 | 1661.92 | 756.29 | 1.6760 |
| 41 | 1658.47 | 756.29 | 1.6725 |
| 42 | 1717.06 | 755.93 | 1.7316 |
| 43 | 1393.43 | 754.62 | 1.4052 |
| 44 | 1717.06 | 754.78 | 1.7316 |
| 45 | 1717.06 | 755.45 | 1.7316 |
| 46 | 1253.34 | 754.10 | 1.2640 |
| 47 | 1705.23 | 756.45 | 1.7197 |
| 48 | 1573.19 | 755.60 | 1.5865 |
| 49 | 1705.23 | 755.96 | 1.7197 |
| 50 | 1705.23 | 755.61 | 1.7197 |
| 51 | 1417.96 | 753.78 | 1.4300 |
| 52 | 1928.15 | 756.29 | 1.9445 |
| 53 | 1928.15 | 755.93 | 1.9445 |
| 54 | 1207.46 | 754.58 | 1.2177 |
| 55 | 1207.46 | 754.58 | 1.2177 |
| 56 | 1393.43 | 754.54 | 1.4052 |
| 57 | 1393.43 | 756.42 | 1.4052 |
| 58 | 1207.46 | 754.62 | 1.2177 |
| 59 | 1717.06 | 755.09 | 1.7316 |
| 60 | 1207.46 | 753.81 | 1.2177 |
| 61 | 1389.04 | 755.51 | 1.4008 |
| 62 | 1207.46 | 753.98 | 1.2177 |
| 63 | 1335.42 | 754.88 | 1.3467 |
| 64 | 1717.06 | 755.31 | 1.7316 |
| 65 | 1520.92 | 755.63 | 1.5338 |
| 66 | 1600.25 | 755.95 | 1.6138 |
| 67 | 1520.92 | 755.20 | 1.5338 |
| TOTAL | 99,160.07 | | 100.00% |

CURVE DATA

| | | | | |
|---|---|--|--|--|
| A Δ = 38°07'27" R = 25.00' T = 8.64' L = 16.63' C = 16.33' CB = S25°28'22"E | K Δ = 97°04'40" R = 44.00' T = 49.80' L = 74.55' C = 65.95' CB = S44°38'03"E | U Δ = 29°37'44" R = 66.00' T = 17.46' L = 34.13' C = 33.75' CB = N46°02'39"W | EE R=44.00' L=61.06' Tan=36.60' Δ=79°30'36" CH=56.28' CB=N75°53'54"E | MM R=44.00' L=12.25' Tan=6.16' Δ=15°57'06" CH=12.21' CB=S56°22'15"E |
| B Δ = 80°47'16" R = 130.00' T = 110.61' L = 183.30' C = 168.49' CB = S42°38'06"W | L Δ = 88°45'25" R = 66.00' T = 64.58' L = 102.24' C = 92.32' CB = N48°47'41"W | V Δ = 90°00'00" R = 25.00' T = 25.00' L = 39.27' C = 35.36' CB = S48°54'17"W | FF R=111.00' L=37.75' Tan=19.06' Δ=19°29'03" CH=37.57' CB=N11°59'35"E | NN R=44.00' L=12.03' Tan=6.05' Δ=15°39'39" CH=11.99' CB=N28°18'46"E |
| C Δ = 24°32'58" R = 190.00' T = 41.34' L = 81.41' C = 80.79' CB = N14°30'57"E | M Δ = 08°19'15" R = 66.00' T = 4.80' L = 9.59' C = 9.58' CB = N00°15'21"W | W Δ = 111°07'22" R = 44.00' T = 64.17' L = 85.34' C = 72.58' CB = S76°02'37"W | GG R=89.00' L=62.53' Tan=32.62' Δ=40°15'29" CH=61.26' CB=N22°22'47"E | |
| D Δ = 40°05'31" R = 25.00' T = 9.12' L = 17.49' C = 17.14' CB = N13°39'13"E | N Δ = 20°15'21" R = 190.00' T = 33.94' L = 67.17' C = 66.82' CB = N72°54'03"E | X Δ = 110°53'45" R = 44.00' T = 63.90' L = 85.16' C = 72.48' CB = N79°51'52"E | HH R=311.00' L=42.19' Tan=21.13' Δ=7°46'24" CH=42.16' CB=N62°51'00"E | |
| E Δ = 53°07'38" R = 25.00' T = 12.50' L = 23.18' C = 22.36' CB = N60°15'48"E | O Δ = 56°14'17" R = 190.00' T = 101.53' L = 186.49' C = 179.10' CB = N54°54'35"E | Y Δ = 43°03'41" R = 25.00' T = 9.86' L = 18.79' C = 18.35' CB = S66°13'06"E | II R=44.00' L=71.36' Tan=46.30' Δ=92°55'21" CH=63.79' CB=S42°33'20"E | |
| F Δ = 14°39'14" R = 200.00' T = 25.72' L = 51.15' C = 51.01' CB = N16°05'46"E | P Δ = 32°18'52" R = 66.00' T = 19.12' L = 37.22' C = 36.73' CB = N77°00'57"W | Z Δ = 71°46'07" R = 29.31' T = 18.09' L = 31.31' C = 29.31' CB = S56°22'00"W | JJ R=89.00' L=19.30' Tan=9.69' Δ=12°25'38" CH=19.27' CB=N84°46'11"E | |
| G Δ = 26°29'29" R = 55.00' T = 12.95' L = 25.43' C = 25.20' CB = N76°45'16"W | Q Δ = 26°48'49" R = 66.00' T = 15.73' L = 30.89' C = 30.61' CB = N17°49'23"W | AA Δ = 51°10'38" R = 87.45' T = 41.88' L = 78.11' C = 75.54' CB = S21°11'35"E | KK R=111.00' L=35.01' Tan=17.65' Δ=18°04'23" CH=34.87' CB=S81°56'49"W | |
| H Δ = 8°47'02" R = 111.00' T = 8.53' L = 17.02' C = 17.00' CB = S82°26'06"W | R Δ = 22°39'54" R = 190.00' T = 38.08' L = 75.16' C = 74.67' CB = N38°07'23"E | BB Δ = 58°56'55" R = 71.00' T = 40.13' L = 73.05' C = 69.87' CB = N25°34'00"W | LL R=66.00' L=73.16' Tan=40.85' Δ=63°30'38" CH=69.47' CB=N57°15'41"W | |
| I Δ = 0°51'42" R = 589.00' T = 4.43' L = 8.86' C = 8.86' CB = N78°28'26"E | S Δ = 13°19'02" R = 190.00' T = 22.18' L = 44.16' C = 44.06' CB = N56°06'51"E | CC Δ = 33°20'33" R = 87.45' T = 26.19' L = 50.89' C = 50.18' CB = S12°16'32"E | | |
| J Δ = 2°48'19" R = 589.00' T = 14.42' L = 28.84' C = 28.84' CB = N85°25'27"E | T Δ = 13°46'24" R = 190.00' T = 22.95' L = 45.67' C = 45.56' CB = N69°39'34"E | DD Δ = 17°50'05" R = 87.45' T = 13.72' L = 27.22' C = 27.11' CB = S37°51'51"E | | |

DATE: 10-23-01 \DWC. PATH: R:\92424C12\LDOT\DWG\12-TAB101

| REVISIONS | DATE | DESCRIPTION | BY |
|-----------|----------|----------------|-----|
| | 10-24-01 | ORIGINAL ISSUE | ABR |



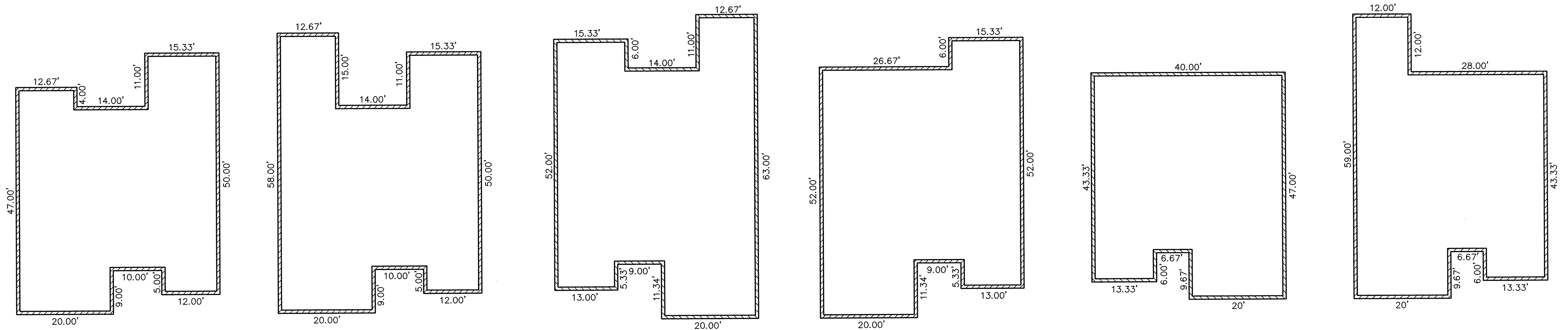
KS ASSOCIATES, INC.
260 Burns Road, Suite 100
P.O. Box 569
Elyria, Ohio 44036
Phone (440) 365-4730
Fax (440) 365-4790
mailto:ksassoc@ksassoc.com
www.ksassoc.com

**STONEHEDGE CONDOMINIUMS
PHASE NO. 12**

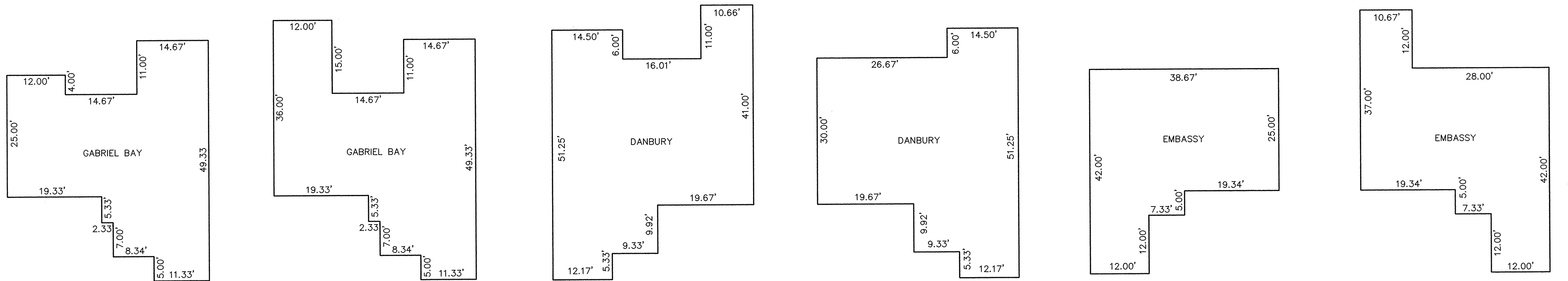
PART OF ORIGINAL TOWNSHIP SECTION NO. 5 & PART OF
BLOCK "A" IN STONEHEDGE CONDOMINIUMS PHASE 6 (P.V. 64, PP. 64-66)
CITY OF ELYRIA COUNTY OF LORAIN STATE OF OHIO

SHEET
3 OF
5

JOB NO.
92424-CP12



FOUNDATION PLANS
(EXTERIOR DIMENSIONS)



NOTE: TYPICAL FOR UNIT: 61
BUT SUBJECT TO CHANGES IN ORIENTATION

NOTE: TYPICAL FOR UNITS: 65 & 67
BUT SUBJECT TO CHANGES IN ORIENTATION

NOTE: TYPICAL FOR UNIT: 64
BUT SUBJECT TO CHANGES IN ORIENTATION

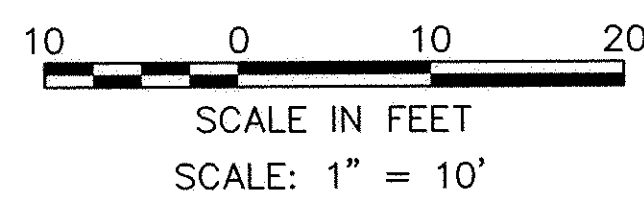
NOTE: TYPICAL FOR UNIT: 66
BUT SUBJECT TO CHANGES IN ORIENTATION

NOTE: TYPICAL FOR UNIT: 62
BUT SUBJECT TO CHANGES IN ORIENTATION

NOTE: TYPICAL FOR UNITS: 63
BUT SUBJECT TO CHANGES IN ORIENTATION

FLOOR PLANS
(INTERIOR DIMENSIONS)

DATE: 10-23-01 \DWG. PATH: R:\92424C12\LDOT\DWG\12-PLAN01



| REVISIONS | DATE | DESCRIPTION | BY |
|-----------|----------|----------------|-----|
| | | | |
| | | | |
| | | | |
| | 10-24-01 | ORIGINAL ISSUE | ABR |

KS ASSOCIATES, INC.
260 Burns Road, Suite 100
P.O. Box 569
Elyria, Ohio 44036
Phone (440) 365-4730
Fax (440) 365-4790
mailto:ks@ksassoc.com
www.ksassoc.com

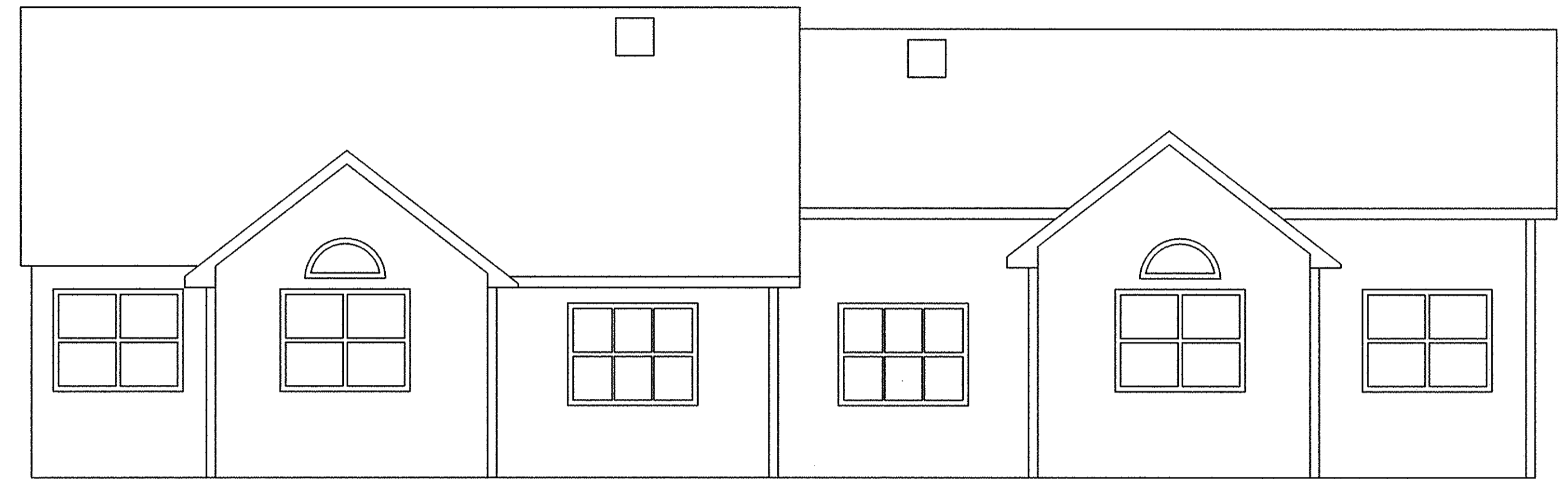
**STONEHEDGE CONDOMINIUMS
PHASE NO. 12**

PART OF ORIGINAL TOWNSHIP SECTION NO. 5 & PART OF
BLOCK "A" IN STONEHEDGE CONDOMINIUMS PHASE 6 (P.V. 64, PP. 64-66)
CITY OF ELYRIA COUNTY OF LORAIN STATE OF OHIO

SHEET
4 OF
5
JOB NO.
92424-CP12

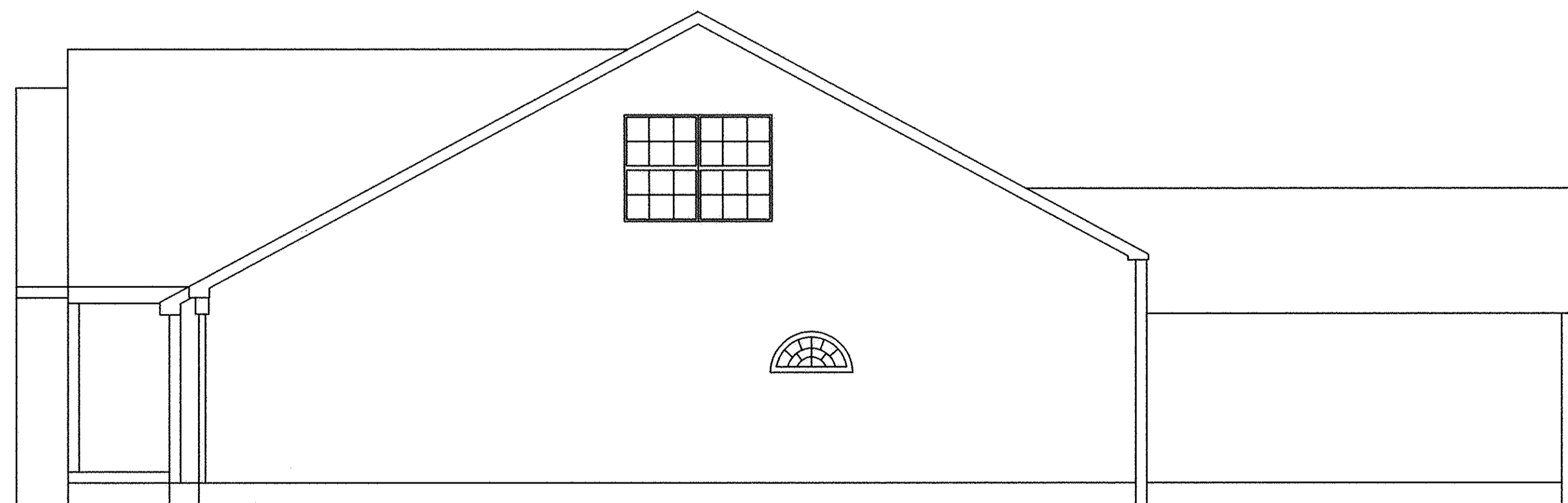


FRONT ELEVATION

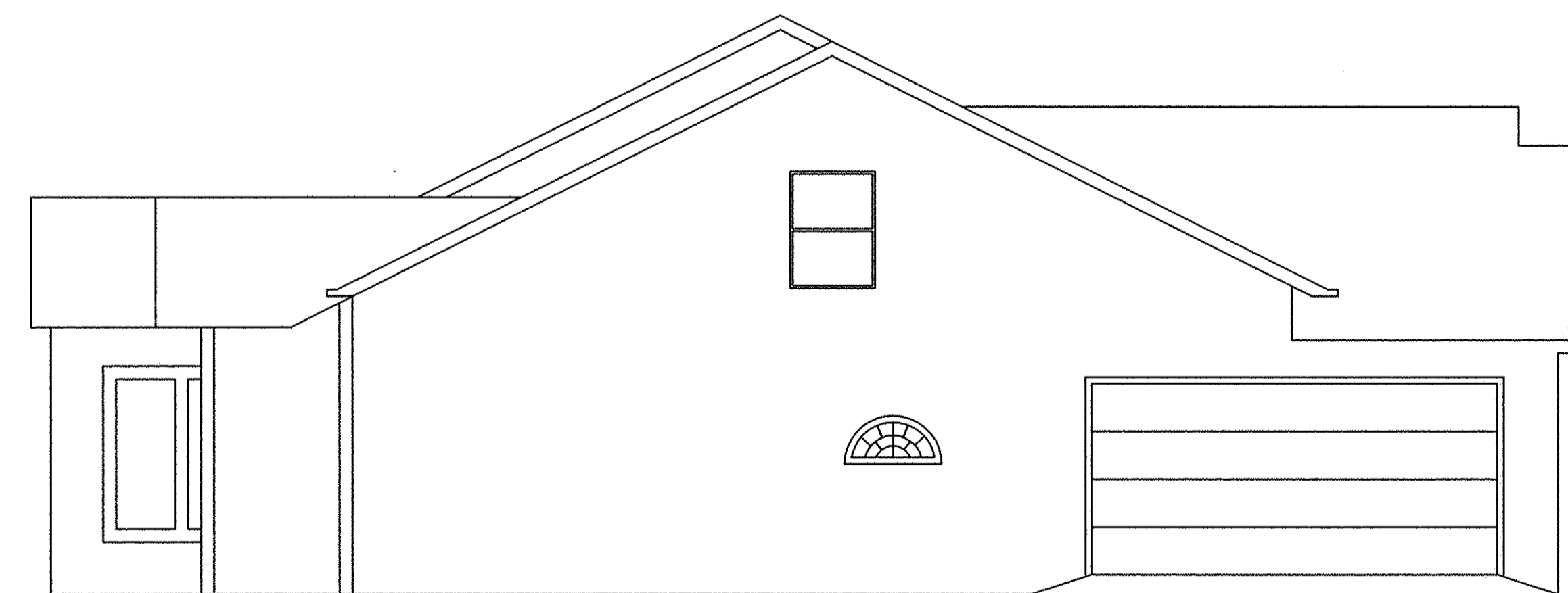


REAR ELEVATION

NOTE: ELEVATION VIEWS SHOWN ARE TYPICAL FOR OVERALL SITE. INDIVIDUAL VARIATIONS SUBJECT TO GARAGE ORIENTATION, UNIT REVERSAL, SINGLE UNIT CONSTRUCTION, ETC. BUILDINGS ARE UNDER CONSTRUCTION.



LEFT SIDE ELEVATION



RIGHT SIDE ELEVATION

DATE: 10-18-01 \DWG. PATH: R:\92424C12\DDT\DWG\12-ELEV01

| REVISIONS | DATE | DESCRIPTION | BY |
|-----------|----------|----------------|-----|
| | 10-24-01 | ORIGINAL ISSUE | ABR |

KS ASSOCIATES
 KS ASSOCIATES, INC.
 260 Burns Road, Suite 100
 P.O. Box 569
 Elipio, Ohio 44036
 Phone (440) 365-4730
 Fax (440) 365-4790
 mailroom@ksassoc.com
 www.ksassoc.com

**STONEHEDGE CONDOMINIUMS
 PHASE NO. 12**
 ELEVATION VIEWS

SHEET
5 OF
5
 JOB NO.
92424-CP12