

# HORIZON SUBDIVISION NO. 1

PART OF ORIGINAL ELYRIA TOWNSHIP LOT NO. 6, WEST OF BLACK RIVER

NOW IN

CITY OF ELYRIA, COUNTY OF LORAIN, STATE OF OHIO

### OWNER'S CERTIFICATE

THIS IS TO CERTIFY THAT THE UNDERSIGNED LOWELL HENSLEY, REPRESENTING LAKE STAR CONSTRUCTION COMPANY OWNER OF LAND CONTAINED WITHIN THIS PLAT OF HORIZON SUBDIVISION NO. 1, HAVING EXAMINED THE SAME DOES HEREBY ACCEPT THE SAME TO BE CORRECT AND DEDICATES FOREVER, TO PUBLIC USE, THE STREETS AND EASEMENTS AS SHOWN HEREON.

BY: Lowell H. Hensley  
LOWELL HENSLEY, PRESIDENT  
LAKE STAR CONSTRUCTION CO.

### NOTARY PUBLIC

STATE OF OHIO  
SS

LORAIN COUNTY

THIS IS TO CERTIFY THAT BEFORE ME, A NOTARY PUBLIC, IN AND FOR SAID COUNTY AND STATE, DID PERSONALLY APPEAR THE ABOVE NAMED LOWELL HENSLEY, WHO ACKNOWLEDGED THAT HE DID SIGN THE FOREGOING PLAT AND THAT IT IS HIS FREE ACT AND DEED IN TESTIMONY WHEREOF, I HAVE HEREUNTO SET MY HAND AND OFFICIAL SEAL AT ELYRIA, OHIO, THIS 3 DAY OF AUGUST, 2001.

Carol J. Kirkpatrick  
NOTARY PUBLIC

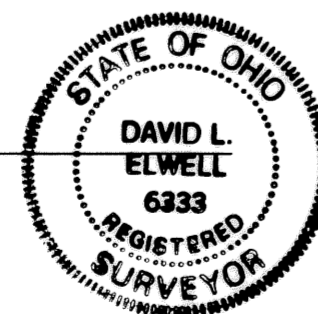
CAROL J. KIRKPATRICK  
Notary Public, State of Ohio  
My Commission Expires July 31, 2004

MY COMMISSION EXPIRES:

### SURVEYOR'S CERTIFICATE

THIS IS TO CERTIFY THAT AT THE REQUEST OF THE OWNER, I HAVE SURVEYED AND PLATTED HORIZON SUBDIVISION NO. 1, AS SHOWN HEREON, AND CONTAINING 7.7170 ACRES OF LAND IN ELYRIA TOWNSHIP ORIGINAL LOT NO. 6, WEST OF BLACK RIVER NOW IN THE CITY OF ELYRIA, COUNTY OF LORAIN, AND STATE OF OHIO. AT ALL POINTS SO INDICATED, IRON PIN MONUMENTS WERE EITHER FOUND OR SET. DISTANCES SHOWN ARE IN FEET AND DECIMAL PARTS THEREOF. BEARINGS SHOWN ARE ASSUMED AND FOR THE PURPOSE OF DESCRIBING ANGLES ONLY. ALL OF WHICH I CERTIFY TO BE CORRECT. I HEREBY CERTIFY THAT THE FIELD SURVEY OF THE BOUNDARY SHOWN IN THIS PLAT OF HORIZON SUBDIVISION NO. 1 EXCEEDS ONE (1) FOOT IN 10,000 PRECISION, AS REQUIRED PER CHAPTER 1117.02, ELYRIA CITY CODIFIED ORDINANCES. SURVEY MONUMENTS NECESSARY FOR CONSTRUCTION OF IMPROVEMENTS ARE IN PLACE WITH ANY REMAINING SURVEY MONUMENTS TO BE PROPERLY PLACED UPON COMPLETION OF CONSTRUCTION. ALL INFORMATION SHOWN HEREON IS BASED UPON A SURVEY PERFORMED BY KS ASSOCIATES, INC IN OCTOBER OF 1999.

David L. Elwell  
DAVID L. ELWELL  
REGISTERED SURVEYOR NO 6333

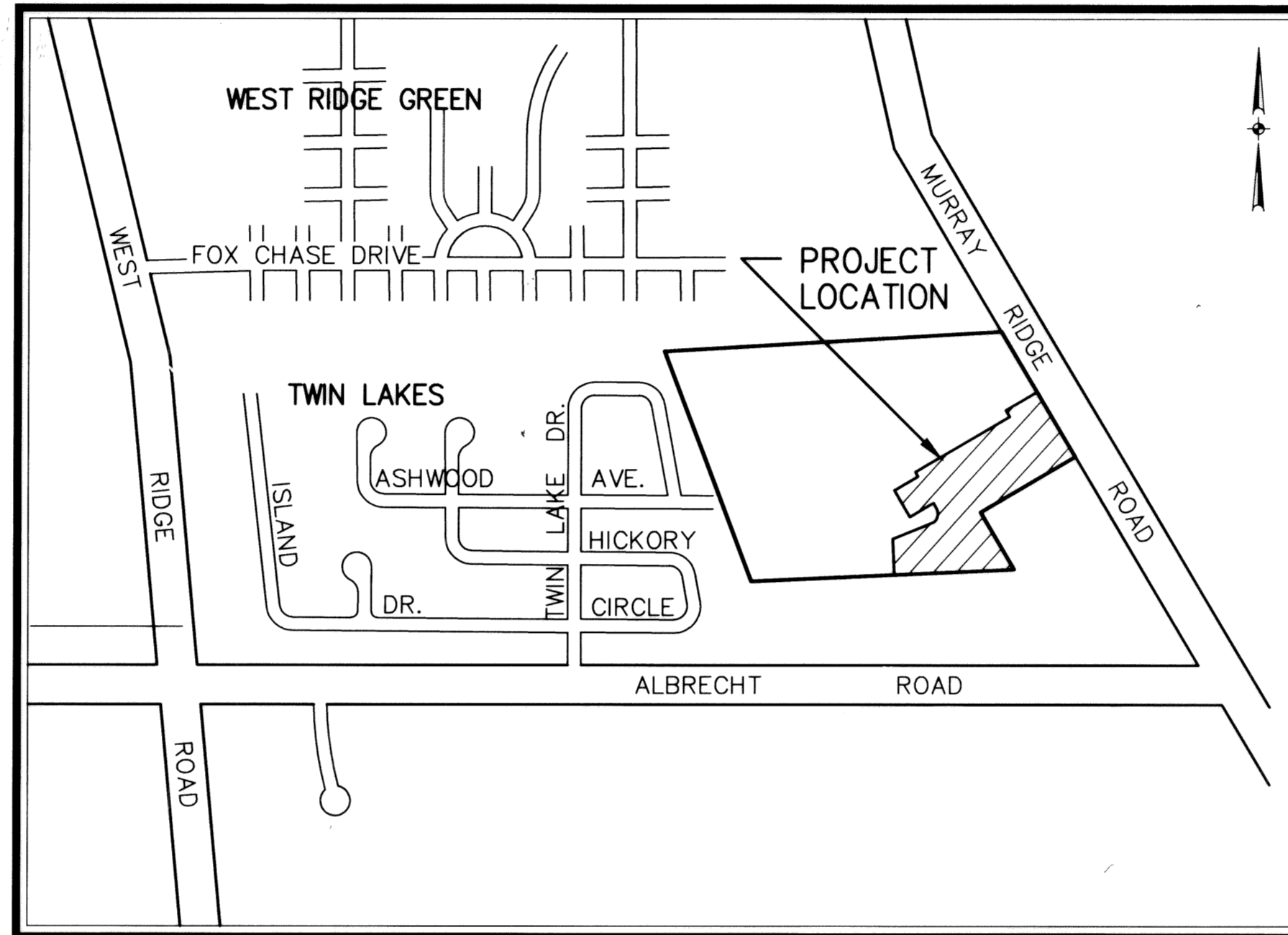


### LEGEND

- IRON PIN TO BE SET
- ⊙ IRON PIN FOUND
- ▭ MONUMENT BOX
- ⊖ PERMANENT MONUMENT PER CITY OF ELYRIA ORD. 1119.10 (b)

### ACREAGE

LOTS	5.9706 AC.
STREETS	1.7464 AC.
TOTAL	7.7170 AC.



AREA MAP - NO SCALE

### CITY ENGINEER

APPROVED THIS 9<sup>th</sup> DAY OF August, 2001.

Joh Hart  
ELYRIA CITY ENGINEER

NOTE - PERMANENT MONUMENTS SHALL BE PLACED IN ACCORDANCE WITH CITY OF ELYRIA CODIFIED ORDINANCES 1119.10(b).

NOTE - EASEMENTS GRANTED TO THE CITY OF ELYRIA FOR PUBLIC UTILITIES INCLUDING WATERMAINS, STORM AND SANITARY SEWERS SHALL HAVE PRIORITY OVER EASEMENTS GRANTED TO PRIVATE UTILITIES (ELECTRIC, TELEPHONE, GAS, CABLE TELEVISION, ETC.). ALL EASEMENTS SHALL CONFORM TO SECTION 1115.08, CODIFIED ORDINANCES OF THE CITY OF ELYRIA.

### CITY COUNCIL

THIS IS TO CERTIFY THAT ELYRIA CITY COUNCIL HAS ACCEPTED ALL PUBLIC LANDS AND EASEMENTS WITHIN THE CITY OF ELYRIA AS SHOWN HEREON, BY ADOPTION OF ORDINANCE NO. 2001-120 ON August 6<sup>th</sup> 2001.

BY: Arthur J. Wilson  
CLERK OF ELYRIA CITY COUNCIL

### MORTGAGEE'S CERTIFICATE

THIS IS TO CERTIFY THAT NORTHERN SAVINGS & LOAN MORTGAGEE OF LANDS CONTAINED WITHIN THIS PLAT OF HORIZON SUBDIVISION NO. 1 AS SHOWN HEREON, AND REPRESENTED BY THE UNDERSIGNED, DOES HEREBY ACCEPT THIS PLAT OF SAME TO BE CORRECT AND DEDICATES FOREVER TO PUBLIC USE THE STREETS AND EASEMENTS AS SHOWN HEREON.

BY: Dale Schieferstein BY: Daniel E. Schaefer  
TITLE: Vice President TITLE: ASST VICE PRESIDENT

### NOTARY PUBLIC

STATE OF OHIO  
SS

LORAIN COUNTY

BEFORE ME, A NOTARY PUBLIC, IN AND FOR SAID COUNTY AND STATE, DID PERSONALLY APPEAR \_\_\_\_\_ REPRESENTING

NORTHERN SAVINGS & LOAN COMPANY  
WHO ACKNOWLEDGED THAT HE DID SIGN THE FOREGOING PLAT OF HORIZON SUBDIVISION NO. 1 AND THAT IT WAS HIS OWN FREE ACT AND DEED AND THE FREE ACT AND DEED OF SAID DALE SCHIEFERSTEIN, VICE PRES + DANIEL E. SCHAEFER, ASST VICE PRESIDENT IN TESTIMONY WHEREOF, I HAVE HEREUNTO SET MY HAND AND OFFICIAL SEAL AT ELYRIA, OHIO, THIS AUGUST 3 DAY OF AUGUST, 2001.

Carol J. Kirkpatrick  
NOTARY PUBLIC  
CAROL J. KIRKPATRICK  
Notary Public, State of Ohio  
My Commission Expires July 31, 2004  
MY COMMISSION EXPIRES

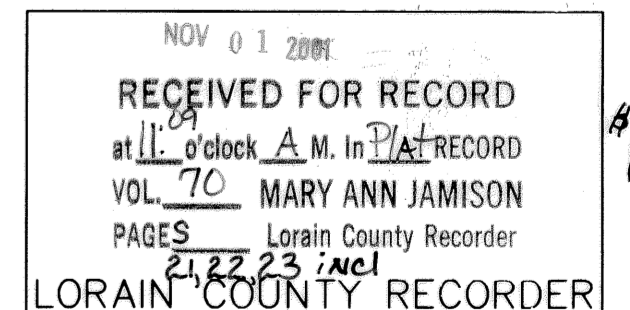
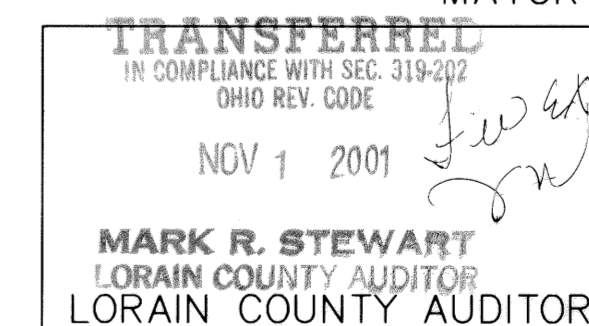
### PLANNING COMMISSION

THIS IS TO CERTIFY THAT THE PLANNING COMMISSION OF THE CITY OF ELYRIA HAS APPROVED THIS PLAT OF HORIZON SUBDIVISION NO. 1 ON THE 17<sup>th</sup> DAY OF JULY, 2001.

William M. Schaefer  
PRESIDENT  
Jean Onderko  
SECRETARY

MAYOR APPROVED THIS 9<sup>th</sup> DAY OF August, 2001.

William M. Schaefer  
MAYOR



Box: LCTC (Linda Murray)

DATE	DESCRIPTION	BY
04-03-00	ORIGINAL ISSUE	



KS ASSOCIATES, INC.  
260 Burns Road, Suite 100  
P.O. Box 569  
Elyria, Ohio 44036  
Phone (440) 365-4730  
Fax (440) 365-4790  
mailroom@ksassoc.com  
www.ksassoc.com

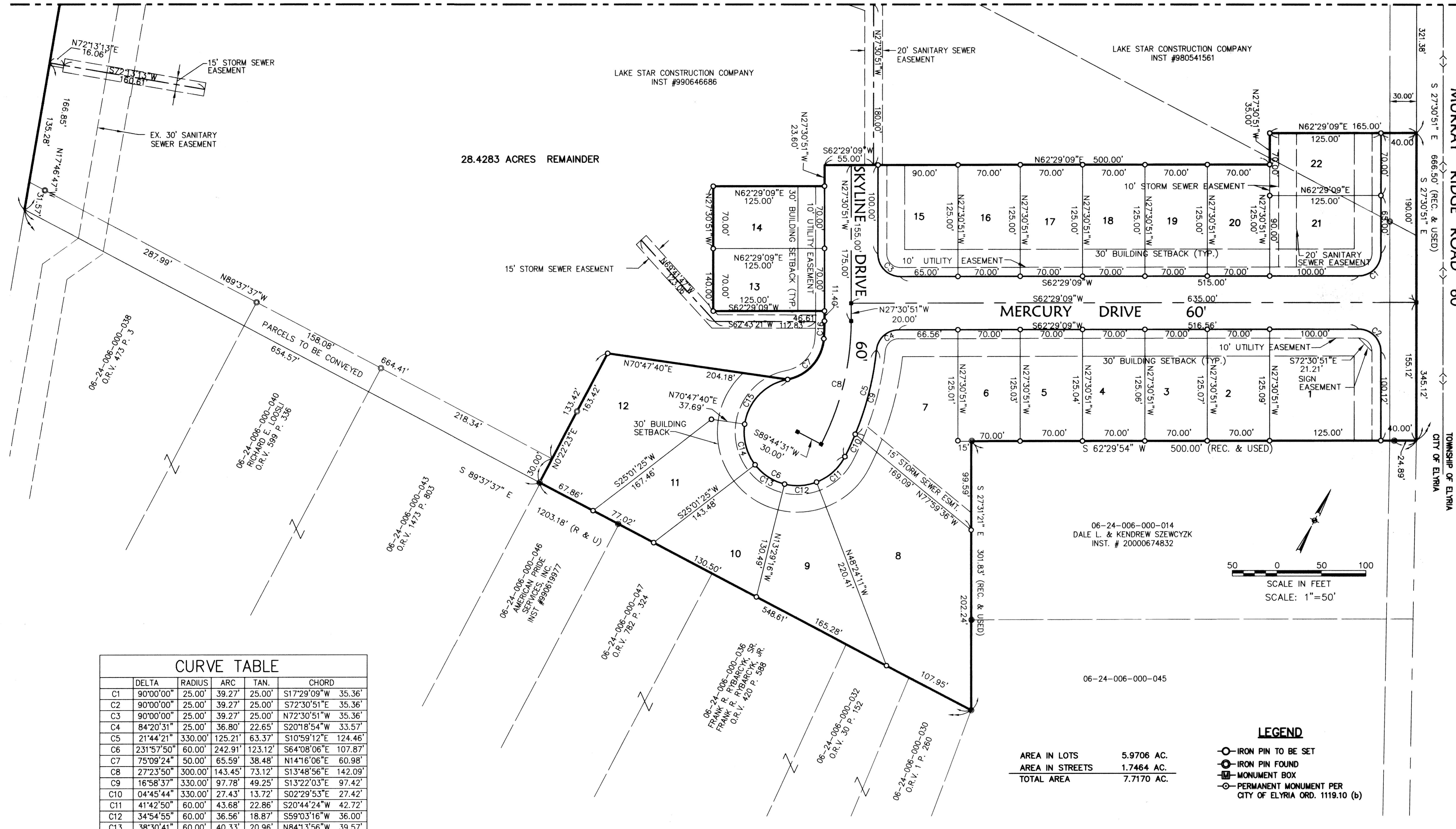
### HORIZON SUBDIVISION NO. 1

PART OF ORIGINAL ELYRIA TOWNSHIP LOT NO. 6  
WEST OF BLACK RIVER  
CITY OF ELYRIA, LORAIN COUNTY, OHIO

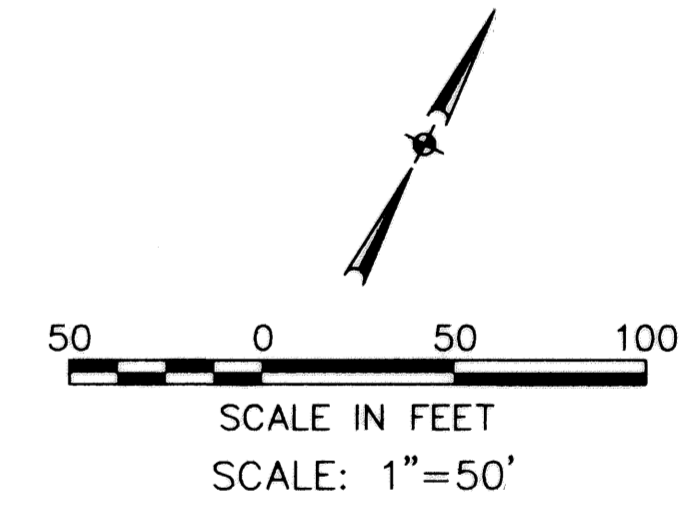
SHEET 1 OF 3  
JOB NO. 98130

MATCHLINE A - A SEE SHEET 3

MATCHLINE A - A SEE SHEET 3



CURVE TABLE					
	DELTA	RADIUS	ARC	TAN.	CHORD
C1	90°00'00"	25.00'	39.27'	25.00'	S17°29'09"W 35.36'
C2	90°00'00"	25.00'	39.27'	25.00'	S72°30'51"E 35.36'
C3	90°00'00"	25.00'	39.27'	25.00'	N72°30'51"W 35.36'
C4	84°20'31"	25.00'	36.80'	22.65'	S20°18'54"W 33.57'
C5	21°44'21"	330.00'	125.21'	63.37'	S10°59'12"E 124.46'
C6	231°57'50"	60.00'	242.91'	123.12'	S64°08'06"E 107.87'
C7	75°09'24"	50.00'	65.59'	38.48'	N14°16'06"E 60.98'
C8	27°23'50"	300.00'	143.45'	73.12'	S13°48'56"E 142.09'
C9	16°58'37"	330.00'	97.78'	49.25'	S13°22'03"E 97.42'
C10	04°45'44"	330.00'	27.43'	13.72'	S02°29'53"E 27.42'
C11	41°42'50"	60.00'	43.68'	22.86'	S20°44'24"W 42.72'
C12	34°54'55"	60.00'	36.56'	18.87'	S59°03'16"W 36.00'
C13	38°30'41"	60.00'	40.33'	20.96'	N84°13'56"W 39.57'
C14	45°46'15"	60.00'	47.93'	25.33'	N42°05'28"W 46.67'
C15	71°03'09"	60.00'	74.41'	42.84'	N16°19'14"E 69.73'
C16	4°12'15"	270.00'	19.81'	9.91'	N25°24'43"W 19.81'



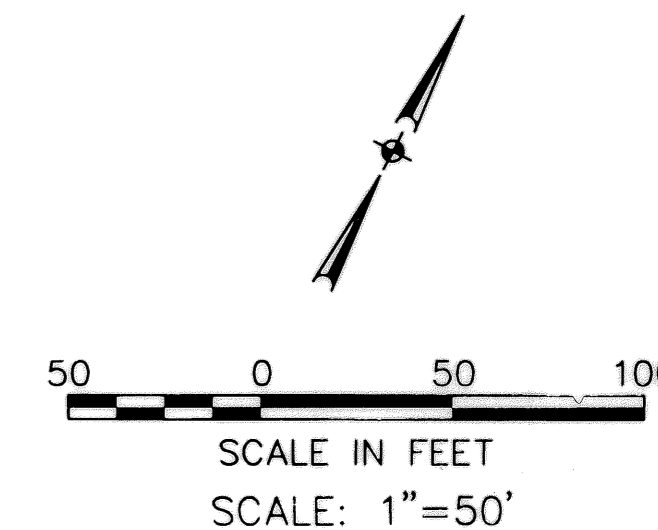
AREA IN LOTS	5.9706 AC.
AREA IN STREETS	1.7464 AC.
TOTAL AREA	7.7170 AC.

- LEGEND**
- IRON PIN TO BE SET
  - IRON PIN FOUND
  - MONUMENT BOX
  - PERMANENT MONUMENT PER CITY OF ELYRIA ORD. 1119.10 (b)

DATE	DESCRIPTION	BY
04-03-00	ORIGINAL ISSUE	TMC
05-18-00	ADDED FORCEMAIN EASEMENT	TMC
06-07-00	ADDED STORM SEWER EASEMENT	TMC
1-28-00	ADDED CONSERVATION EASEMENTS	VMB
4-18-01	REMOVED WETLAND EASEMENTS	CCC
6-28-01	ADDED SANITARY EASEMENT	VMB
7-17-01	REVISED CUL-DE-SAC SETBACK	JRK

**HORIZON SUBDIVISION NO. 1**  
 PART OF ORIGINAL ELYRIA TOWNSHIP LOT NO. 6  
 WEST OF BLACK RIVER  
 CITY OF ELYRIA, LORAIN COUNTY, OHIO

SHEET **2** OF **3**  
 JOB NO. **98130**



06-24-005-000-002.  
WEST RIDGE ESTATES, INC.  
D.V. 1168 P. 554

06-24-005-000-017  
JOSEPH E. & DARLENE M. DICESARE.  
D.V. 1406 P. 596

06-24-006-000-016  
TWIN LAKES HOMES, INC.  
INST. #980556890

LAKE STAR CONSTRUCTION COMPANY  
INST #980541561

LAKE STAR CONSTRUCTION COMPANY  
INST #990646686

28.4283 ACRES REMAINDER

Straw-Hoag Ditch

MURRAY  
RIDGE ROAD  
TOWNSHIP OF ELYRIA  
CITY OF ELYRIA

N 17°46'47" W

1123.96'

N89°32'07"E

741.93' (REC.)  
742.20' (CALC.)

N89°36'08"E

800.45' (REC.)  
800.38' (CALC.)

O.L. 5  
O.L. 6

33.62'

20' SANITARY SEWER  
EASEMENT

EX. 30' SANITARY  
SEWER EASEMENT

N75°17'49"E  
325.21'

S85°25'14"W

226.12'

N82°08'22"E

264.80'

MATCHLINE A - A SEE SHEET 2

MATCHLINE A - A SEE SHEET 2

**LEGEND**

- IRON PIN TO BE SET
- ⊙ IRON PIN FOUND
- ⊞ MONUMENT BOX
- PERMANENT MONUMENT PER CITY OF ELYRIA ORD. 1119.10 (b)

DATE	DESCRIPTION	BY	
04-03-00			
DRAWN BY: TMC			
CH'D BY: JRK			
DWG. NAME: 1-PLAT02.DWG			
PATH: 98130\LD\CONTROL\DWGS			
F.B.			
REVISIONS	DATE	DESCRIPTION	BY
	06-29-01	ORIGINAL ISSUE	VMB

**HORIZON SUBDIVISION NO. 1**

PART OF ORIGINAL ELYRIA TOWNSHIP LOT NO. 6  
WEST OF BLACK RIVER  
CITY OF ELYRIA, LORAIN COUNTY, OHIO

KS ASSOCIATES, INC.  
200 Burns Road, Suite 100  
P.O. Box 569  
Elyria, Ohio 44036  
Phone (440) 365-4730  
Fax (440) 365-4790  
mailroom@ksassoc.com  
www.ksassoc.com

SHEET  
3 OF  
3  
JOB NO.  
98130