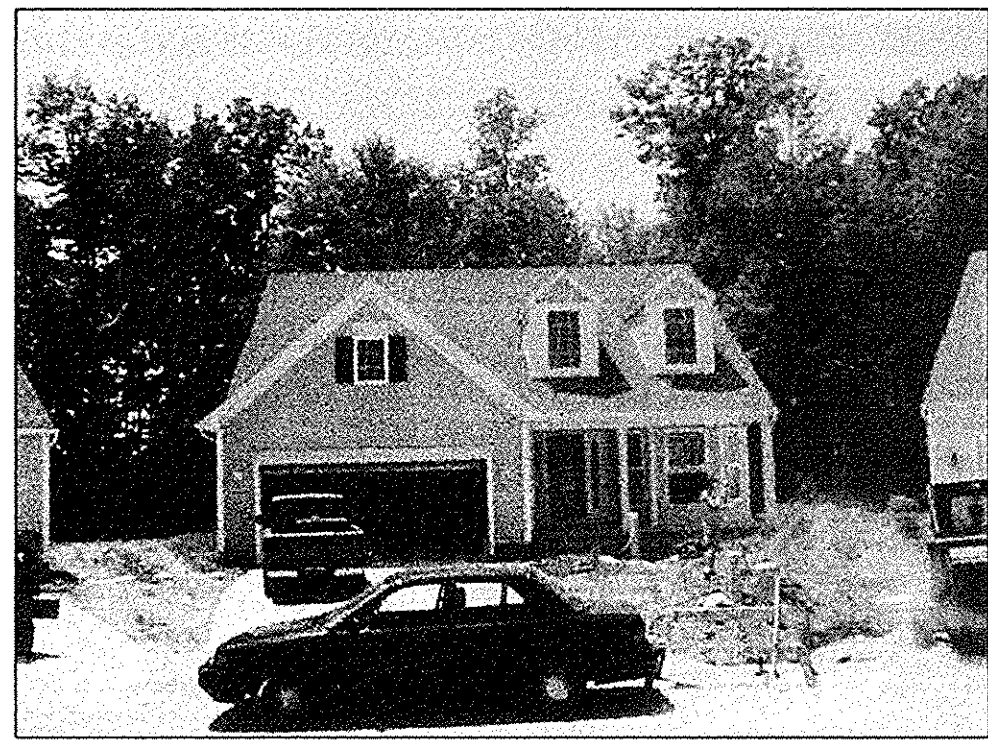


REVISIONS	
7-16-01	REV. PER LORAIN COUNTY TAX MAP DEPARTMENT

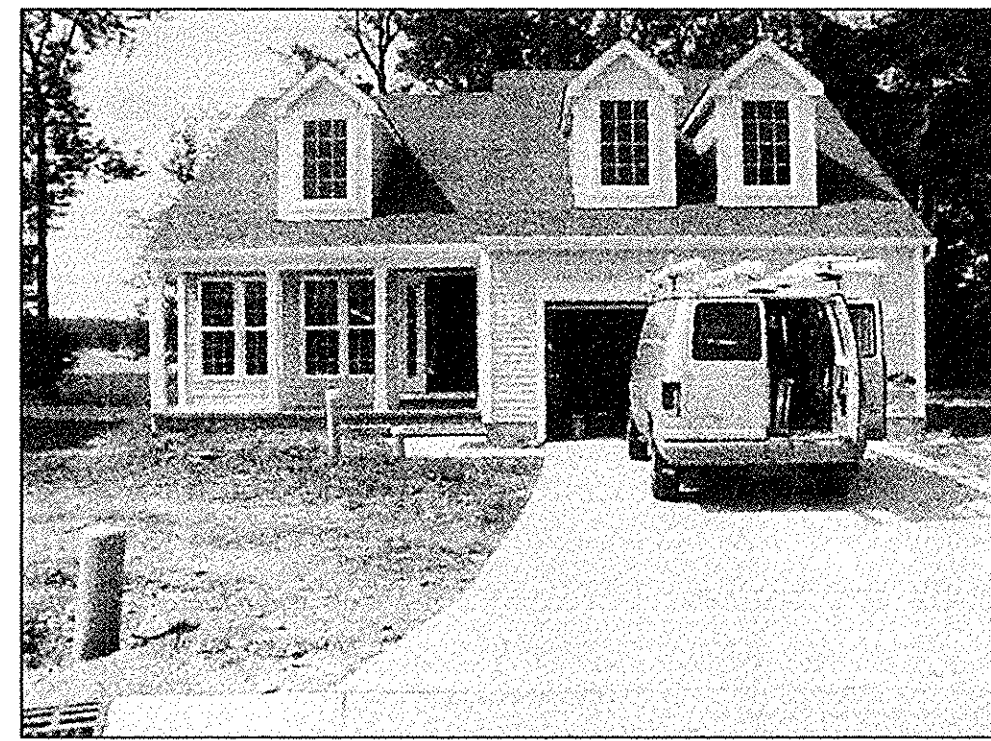
**VILLAGE AT WATERSIDE CROSSINGS
NORTH CONDOMINIUM PHASE 2**
OF PART OF ORIGINAL AVON TWP. SECTION NO. 7
CITY OF AVON LAKE, LORAIN COUNTY, OHIO

**THE HENRY G. REITZ
ENGINEERING COMPANY**
4214 ROCKY RIVER DRIVE
CLEVELAND, OHIO 44135
PHONE: (216) 251-3033

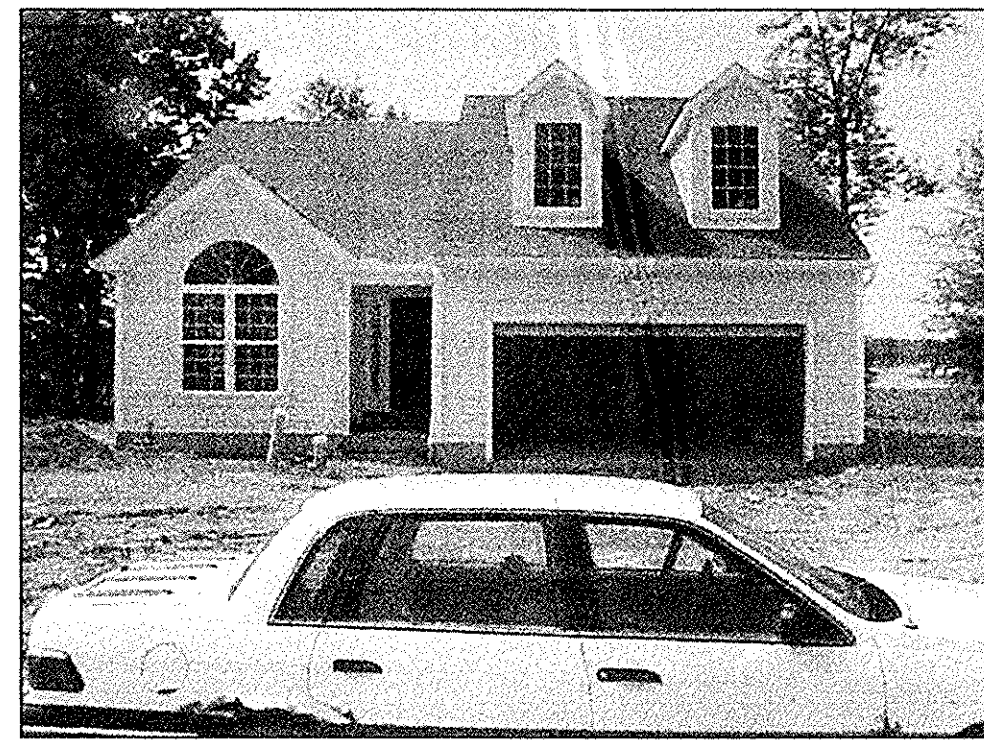
2/3
JUNE 2001



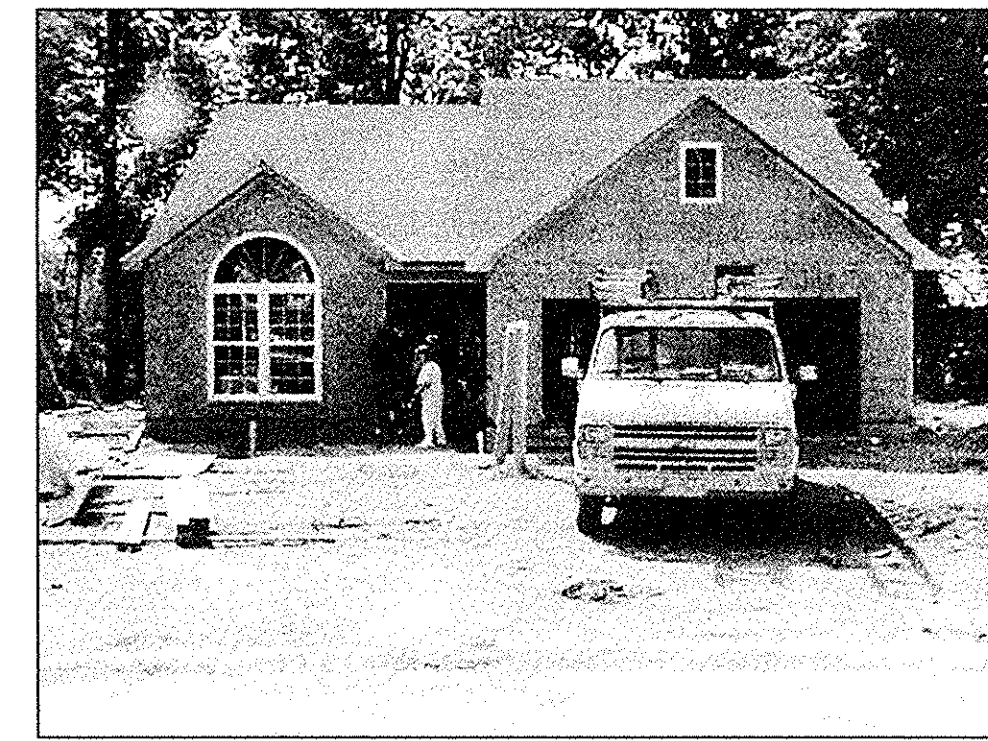
UNIT No. 16 FRONT



UNIT No. 17 FRONT



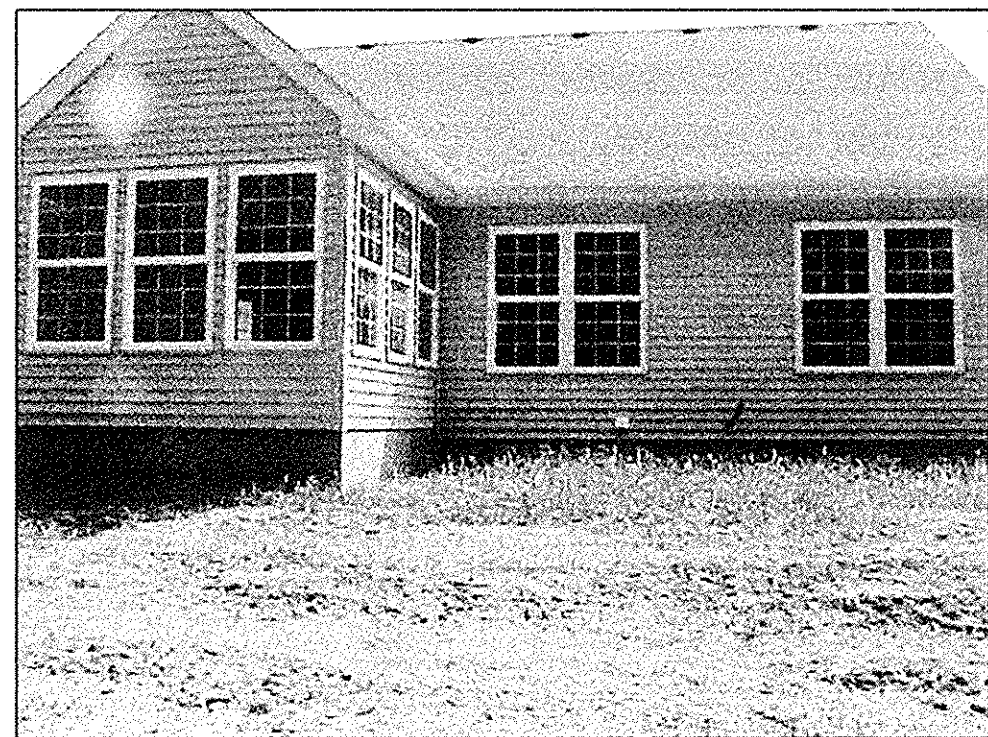
UNIT No. 18 FRONT



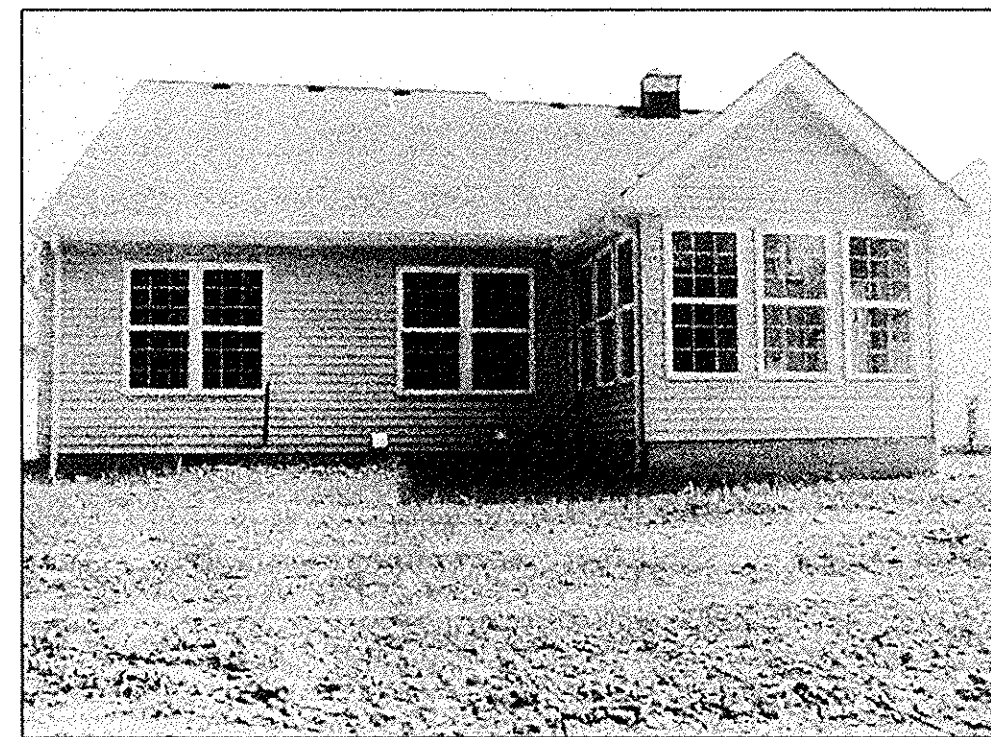
UNIT No. 19 FRONT



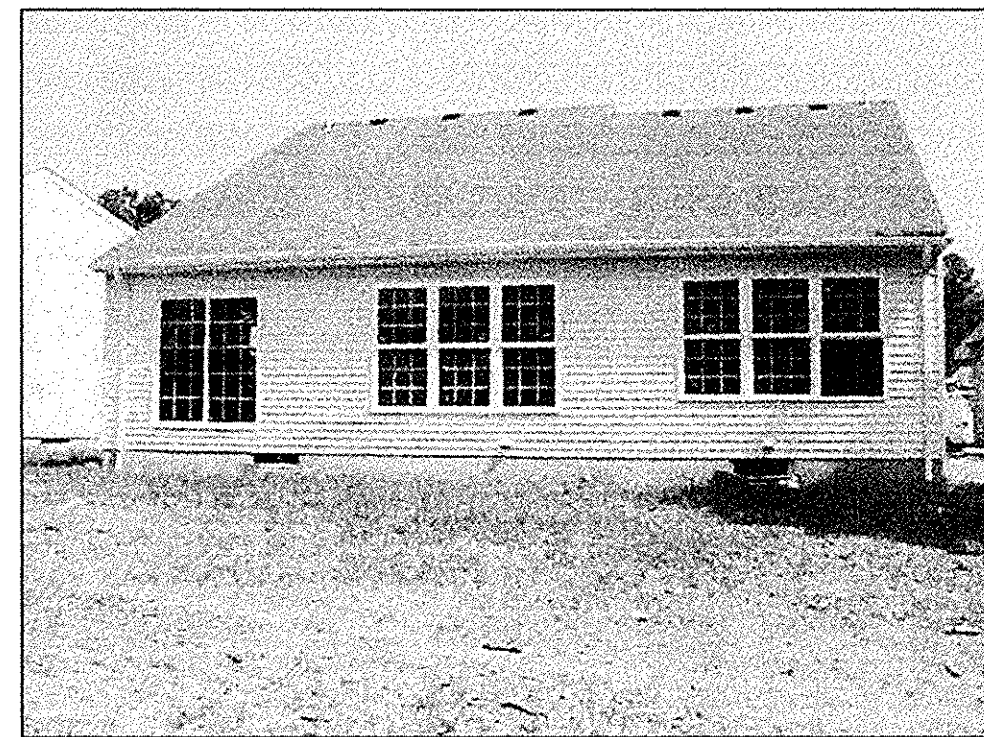
UNIT No. 20 FRONT



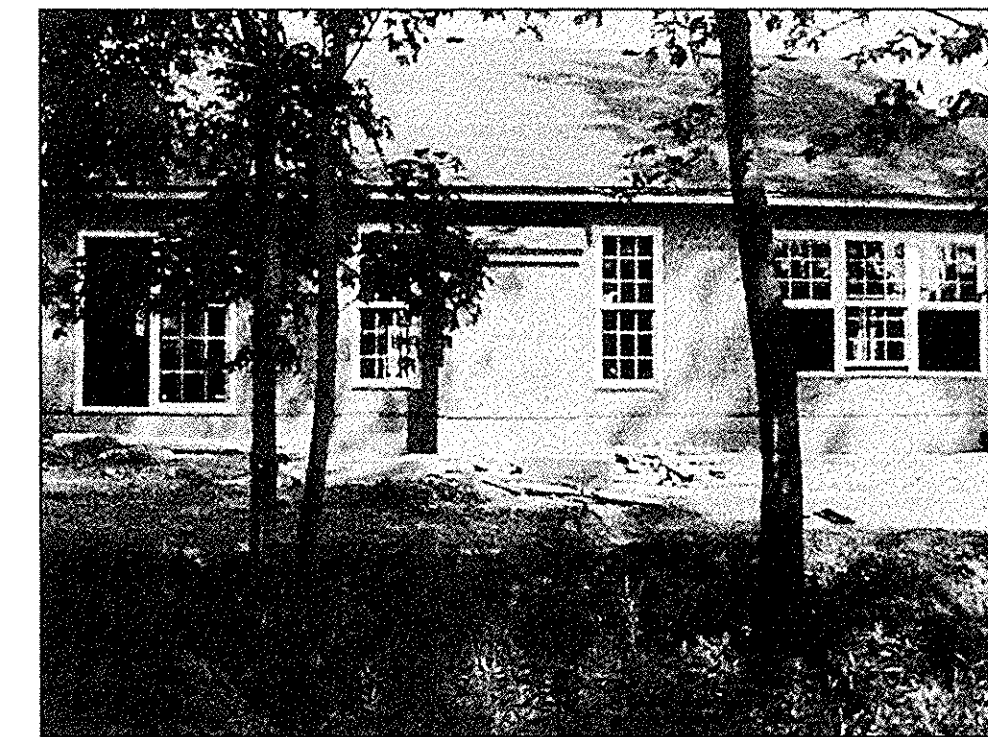
UNIT No. 16 REAR



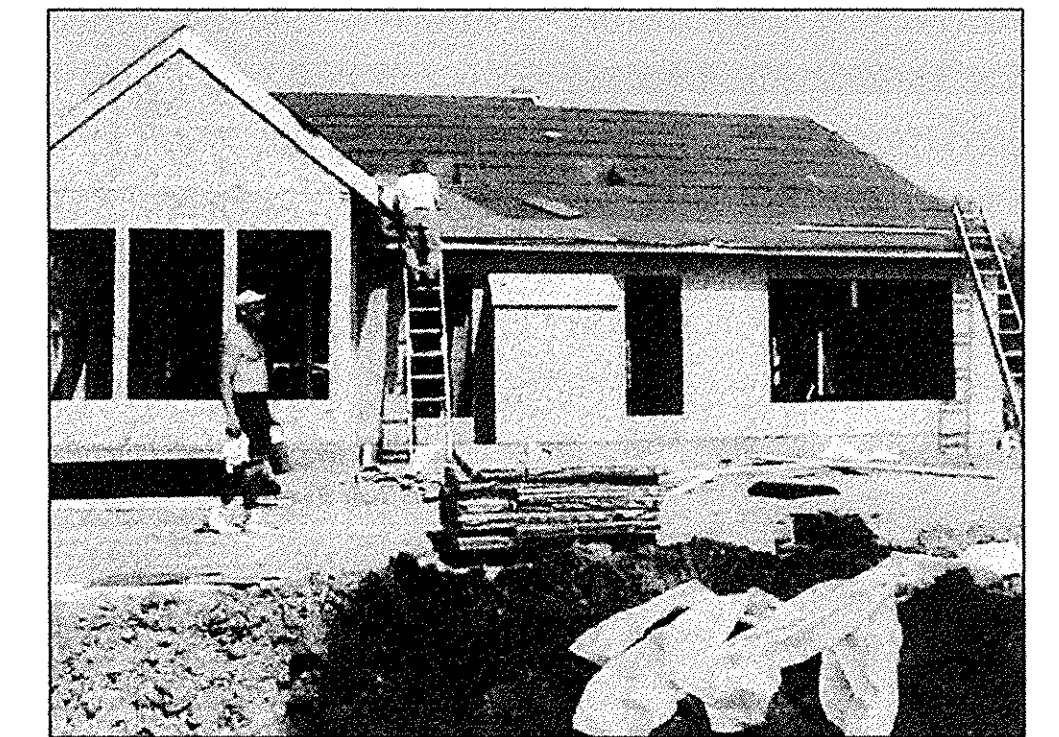
UNIT No. 17 REAR



UNIT No. 18 REAR



UNIT No. 19 REAR



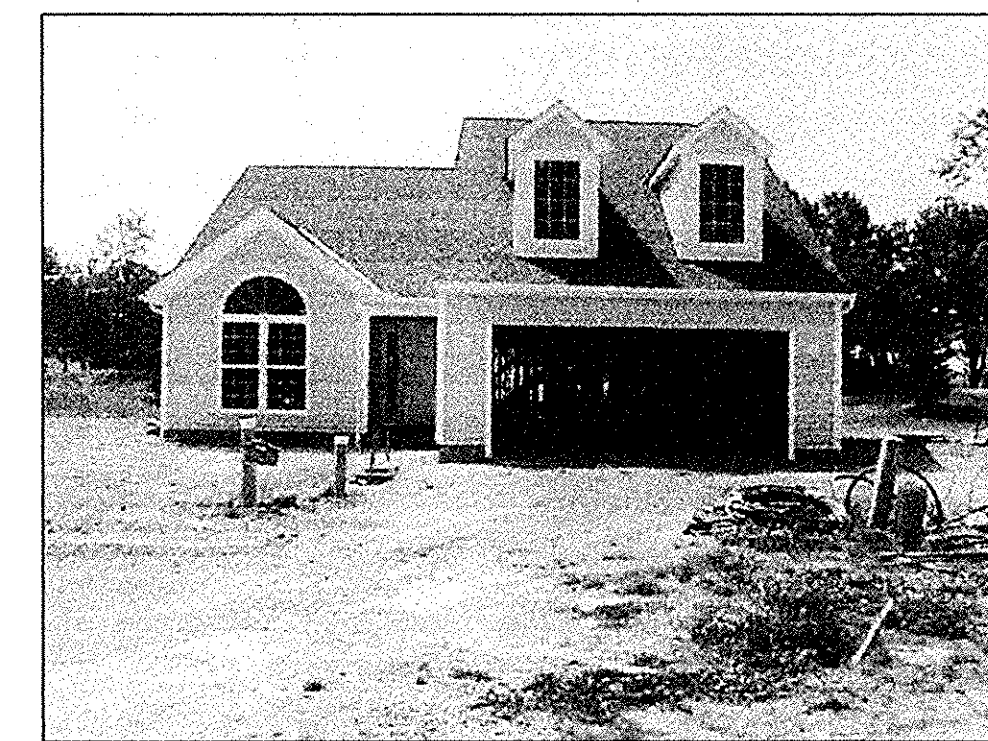
UNIT No. 20 REAR



UNIT No. 21 FOUNDATION



UNIT No. 22 FOUNDATION



UNIT No. 23 FRONT



UNIT No. 23 REAR

REVISIONS	

**VILLAGE AT WATERSIDE CROSSINGS
NORTH CONDOMINIUM PHASE 2**
OF PART OF ORIGINAL AVON TWP. SECTION NO. 7
CITY OF AVON LAKE, LORAIN COUNTY, OHIO

**THE HENRY G. REITZ
ENGINEERING COMPANY**
4214 ROCKY RIVER DRIVE
CLEVELAND, OHIO 44135
PHONE: (216) 251-3033

3
3
JUNE 2001