

MARY JANE BLAKESLEE
D.V. 1415, PG. 119

JOYCE MARIE CLARK
D.V. 1187, PG. 287

FREDERICK W. AND
SHARON A. WESTBERG
D.V. 1423, PG. 500

JAUNITA COOPER
D.V. 1175, PG. 316

DOUGLAS W. BOEHMER
O.R. 272, PG. 472

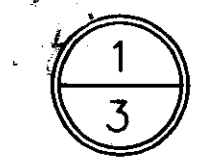
VIRDEN ANN HASWELL
D.V. 1043, PG. 182

HARRY C. AND
BEULAH J. PENCE
D.V. 1416, PG. 940

JOHN T. III AND
JANET P. DAVIS
D.V. 1170, PG. 582

DONALD M. AND
RUTH D. NASH
D.V. 845, PG. 529

RALPH K. AND
CHLOE M. NASH
D.V. 1146, PG. 597



INDEX OF SHEETS

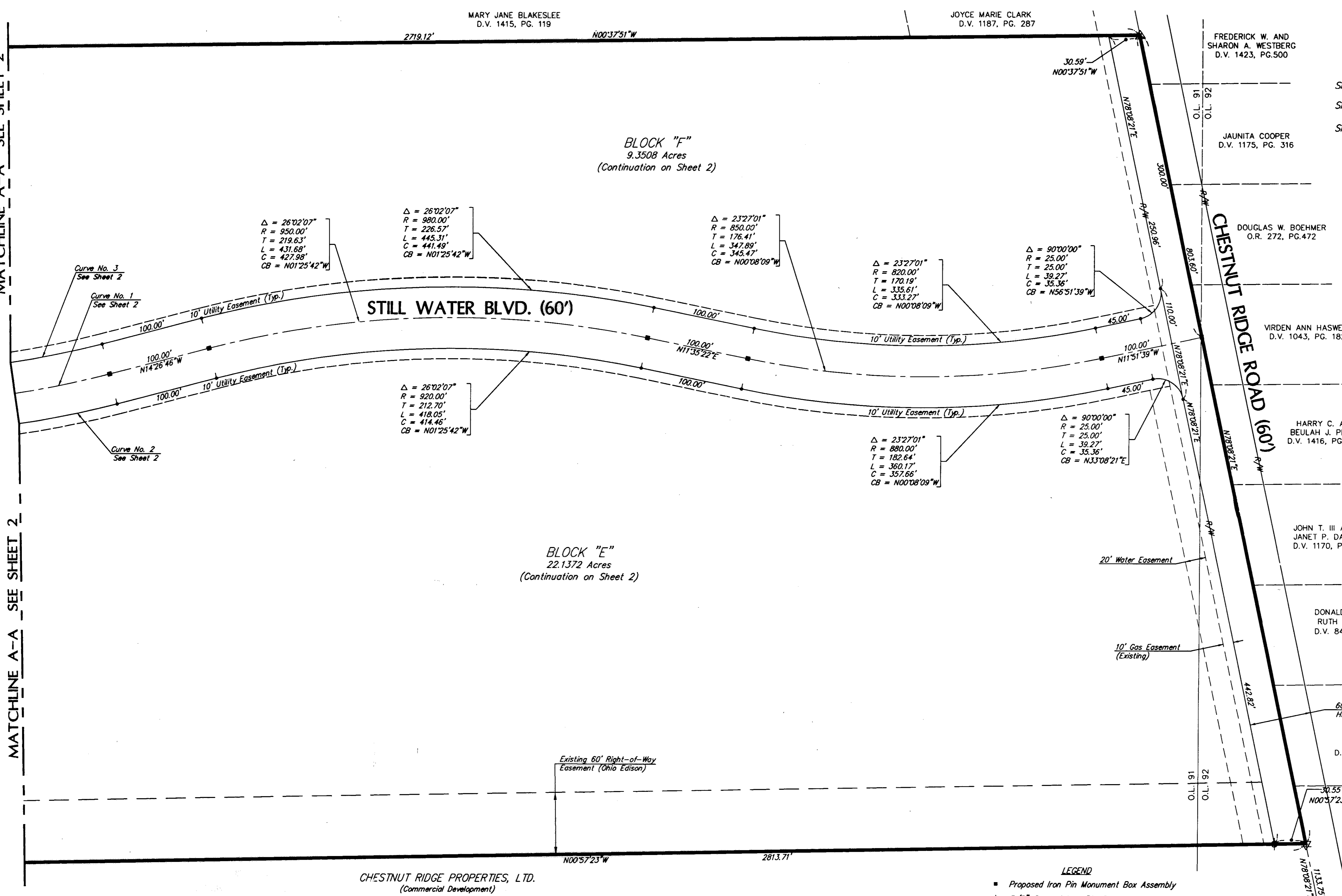
SHEET 1/3	SUBDIVISION PLAT - SOUTH HALF WITH SIGNATURE APPROVALS
SHEET 2/3	SUBDIVISION PLAT - NORTH HALF
SHEET 3/3	SUBDIVISION PLAT - WESTIN WAY AND SURVEYOR'S CERTIFICATE

MATCHLINE A-A SEE SHEET 2

MATCHLINE A-A SEE SHEET 2

BLOCK "F"
9.3508 Acres
(Continuation on Sheet 2)

BLOCK "E"
22.1372 Acres
(Continuation on Sheet 2)

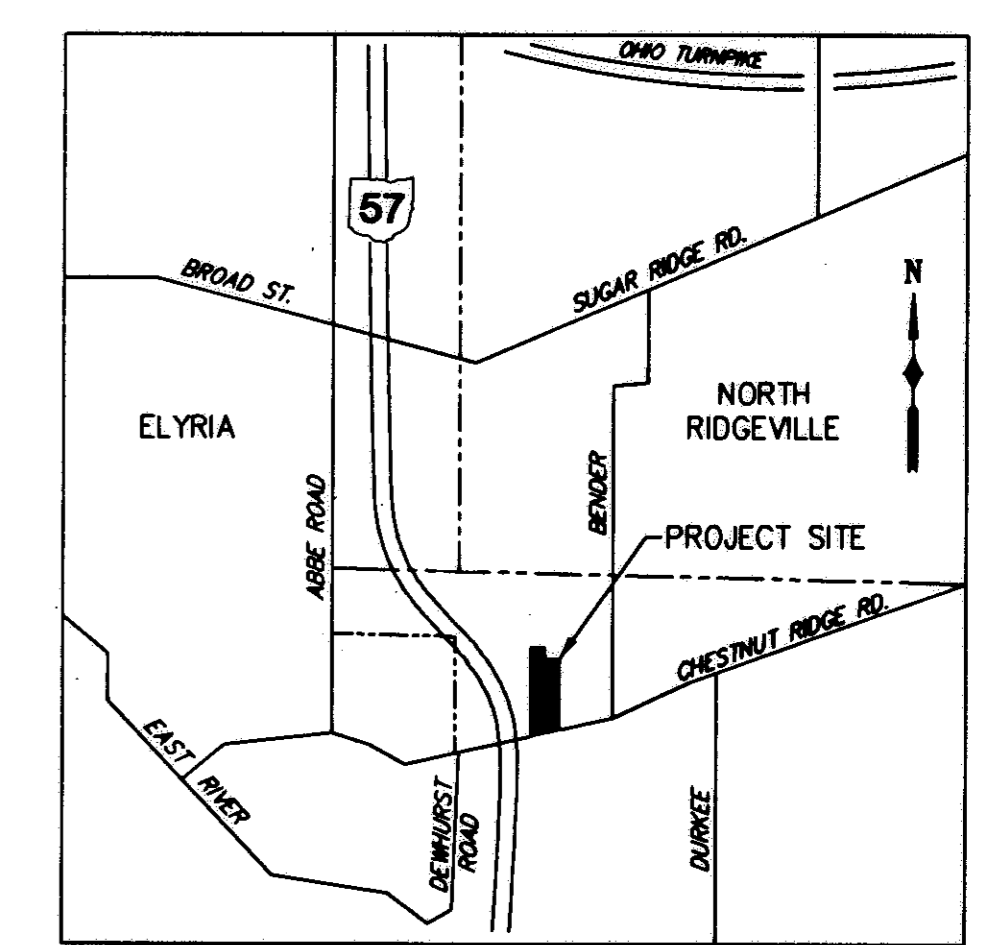


*** FINAL ACCEPTANCE BY THE CITY OF ELYRIA**

THE PORTION OF CHESTNUT RIDGE ROAD, STILL WATER BLVD., FIELDSTONE DRIVE, WESTIN WAY AND MILL STREAM CIRCLE AS DEPICTED HEREON IN GRAPHIC SYMBOL AND AS ORIGINALLY RECORDED ON JANUARY 6, 1999 IN PLAT BOOK VOLUME 62, PAGES 36, 37 AND 38 AND AS REVISED ON JANUARY 18, 1999 IN PLAT BOOK VOLUME 62, PAGE 49 OF LORAIN COUNTY MAP RECORDS ARE HEREBY APPROVED AND ACCEPTED FOR DEDICATION BY THE COUNCIL OF THE CITY OF ELYRIA BY RESOLUTION NO. ORD 2000-92 ADOPTED THIS 5TH DAY OF JUNE, 2000

CITY ENGINEER John Hart 9-28-00
CLERK OF COUNCIL Arthur J. Wilson 9-28-00

NO TRANSFER NECESSARY
MARK R. STEWART
LORAIN COUNTY AUDITOR
4-23-2000
DEPUTY



CHESTNUT RIDGE PROPERTIES, LTD.
(Commercial Development)

APR 23 2001
RECEIVED FOR RECORD
at 10:46 o'clock A.M. in LORAIN RECORD
VOL. 68 MARY ANN JAMISON
PAGE 27, 28 Lorain County Recorder
Box: PAT BRUCK 133.60
84 2nd

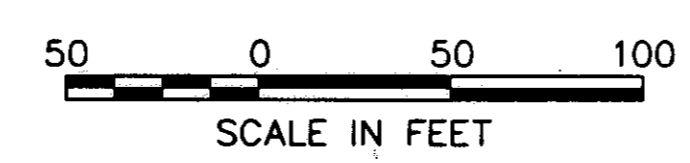
- LEGEND**
- Proposed Iron Pin Monument Box Assembly
 - 5/8" Capped Iron Pin Set
 - Iron Pin Found
 - P.K. Nail Set in Asphalt Pavement

**AMENDED SUBDIVISION PLAT
CHESTNUT RIDGE
RESIDENTIAL DEVELOPMENT NO. 1 ***

PART OF ORIGINAL EATON TOWNSHIP LOTS 91 & 92, ORIGINAL CARLISLE TOWNSHIP SECTION 5 AND ORIGINAL ELYRIA TOWNSHIP LOT 1* NOW IN THE CITY OF ELYRIA, COUNTY OF LORAIN, STATE OF OHIO AND CONTAINING 53.6284 ACRES OF LAND OF WHICH 8.1812 ACRES ARE DEDICATED STREETS, 36.9552 ACRES ARE WITHIN BLOCKS AND 8.4920 ACRES ARE WITHIN THE SUBDIVISION OF LOTS 1 TO 31 INCLUSIVE.

* EAST OF RIVER TRACT NOVEMBER 12, 1998

68/26



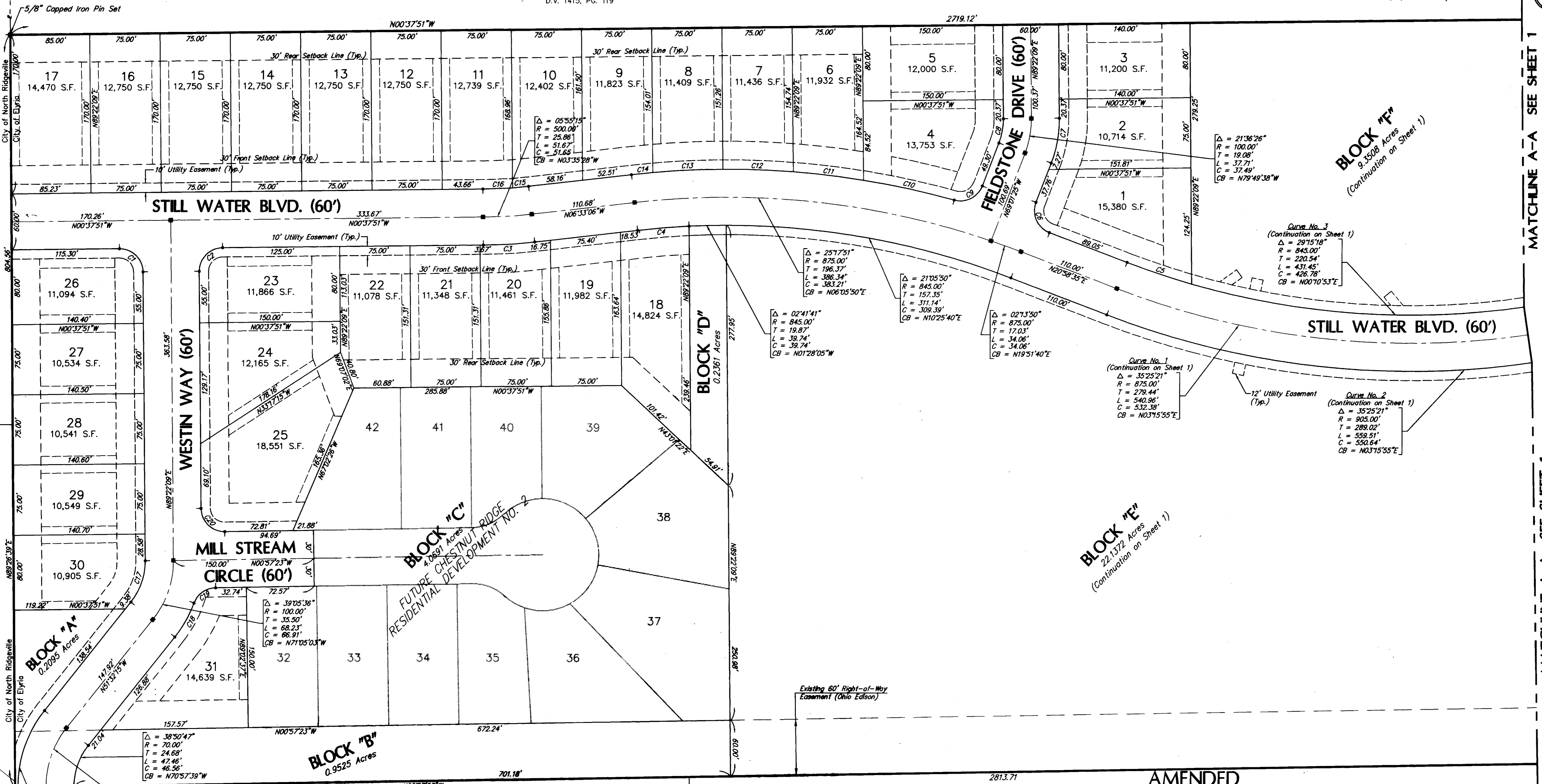
EUTHENICS INC.
CONSULTING ENGINEERS
CLEVELAND, OHIO

DESIGNED: VMB
DATE: NOV., 1998

CHECKED: WCH
DATE: NOV., 1998

DRAWN: VMB
SCALE: AS NOTED

MARY JANE BLAKESLEE
D.V. 1415, PG. 119



MATCHLINE A-A SEE SHEET 1

MATCHLINE A-A SEE SHEET 1

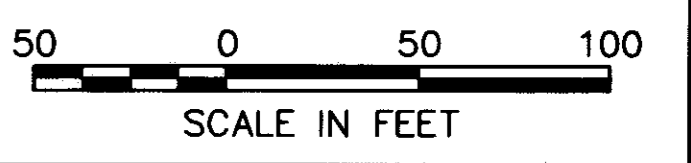
MATCHLINE B-B SEE SHEET 3

AMENDED SUBDIVISION PLAT CHESTNUT RIDGE RESIDENTIAL DEVELOPMENT NO. 1

PART OF ORIGINAL EATON TOWNSHIP LOTS 91 & 92, ORIGINAL CARLISLE TOWNSHIP SECTION 5 AND ORIGINAL ELYRIA TOWNSHIP LOT 1 EAST OF THE RIVER TRACT NOW IN THE CITY OF ELYRIA, COUNTY OF LORAIN, STATE OF OHIO AND CONTAINING 53.6284 ACRES OF LAND OF WHICH 8.1812 ACRES ARE DEDICATED STREETS, 36.9552 ACRES ARE WITHIN BLOCKS AND 8.4920 ACRES ARE WITHIN THE SUBDIVISION OF LOTS 1 TO 31 INCLUSIVE

NOVEMBER 12, 1998

68/27



CURVE	RADIUS	DELTA	LENGTH	TANGENT	CHORD
C1	25.00'	90°00'00"	39.27'	25.00'	N44°22'09"E 35.36'
C2	25.00'	90°00'00"	39.27'	25.00'	N45°37'51"W 35.36'
C3	530.00'	05°55'15"	54.77'	27.41'	N03°35'28"W 54.74'
C4	845.00'	03°44'11"	55.10'	27.56'	N04°41'01"W 55.09'
C5	845.00'	04°58'43"	72.93'	36.49'	N18°30'13"E 72.91'
C6	25.00'	90°00'00"	39.27'	25.00'	N85°58'35"E 35.36'
C7	130.00'	21°36'26"	49.03'	24.81'	N79°49'38"W 48.74'
C8	70.00'	21°36'26"	26.40'	13.36'	N79°49'38"W 26.24'
C9	25.00'	84°30'18"	36.87'	22.71'	N26°46'16"W 33.82'
C10	905.00'	06°17'18"	99.33'	49.71'	N12°20'14"E 99.28'
C11	905.00'	04°47'23"	75.66'	37.85'	N06°47'54"E 75.63'
C12	905.00'	04°45'17"	75.10'	37.57'	N02°01'33"E 75.08'
C13	905.00'	04°45'10"	75.07'	37.56'	N02°43'40"W 75.05'
C14	905.00'	01°26'51"	22.86'	11.43'	N05°49'41"W 22.86'
C15	470.00'	02°05'52"	17.21'	8.61'	N05°30'10"W 17.21'
C16	470.00'	03°49'23"	31.36'	15.69'	N02°32'32"W 31.35'
C17	70.00'	39°05'36"	47.76'	24.85'	N71°05'03"W 46.84'
C18	130.00'	18°24'57"	41.77'	21.07'	N60°44'34"W 41.59'
C19	25.00'	68°59'30"	30.10'	17.18'	N35°27'08"W 28.32'
C20	25.00'	90°19'32"	39.41'	25.14'	N44°12'23"E 35.46'

SUNRISE DEVELOPMENT CO.
Doc. No. 980523938
(Commercial Development)

CHESTNUT RIDGE PROPERTIES, LTD.
Doc. No. 980523936
(Commercial Development)

CHESTNUT RIDGE PROPERTIES, LTD.
Doc. No. 980523936
(Commercial Development)

- LEGEND**
- Proposed Iron Pin Monument Box Assembly
 - 5/8" Capped Iron Pin Set
 - Iron Pin Found

BLOCK ACREAGE	ORIGINAL LOT & SECTION ACREAGE BREAKDOWN
BLOCK A = 0.2095 Ac.	Elyria Township O.L. 1 = 0.8710 Ac.
BLOCK B = 0.9525 Ac.	Carlisle Township Sect. 5 = 0.1142 Ac.
BLOCK C = 4.0691 Ac.	Eaton Township O.L. 91 = 52.0373 Ac.
BLOCK D = 0.2361 Ac.	Eaton Township O.L. 92 = 0.6059 Ac.
BLOCK E = 22.1372 Ac.	
BLOCK F = 9.3508 Ac.	
36.9552 Ac.	53.6284 Ac.

EUTHEMICS INC.
CONSULTING ENGINEERS
CLEVELAND, OHIO

CHECKED: WCH
DATE: NOV. 1998
DRAWN: VMB
SCALE: AS NOTED

AMENDED SUBDIVISION PLAT CHESTNUT RIDGE RESIDENTIAL DEVELOPMENT NO. 1

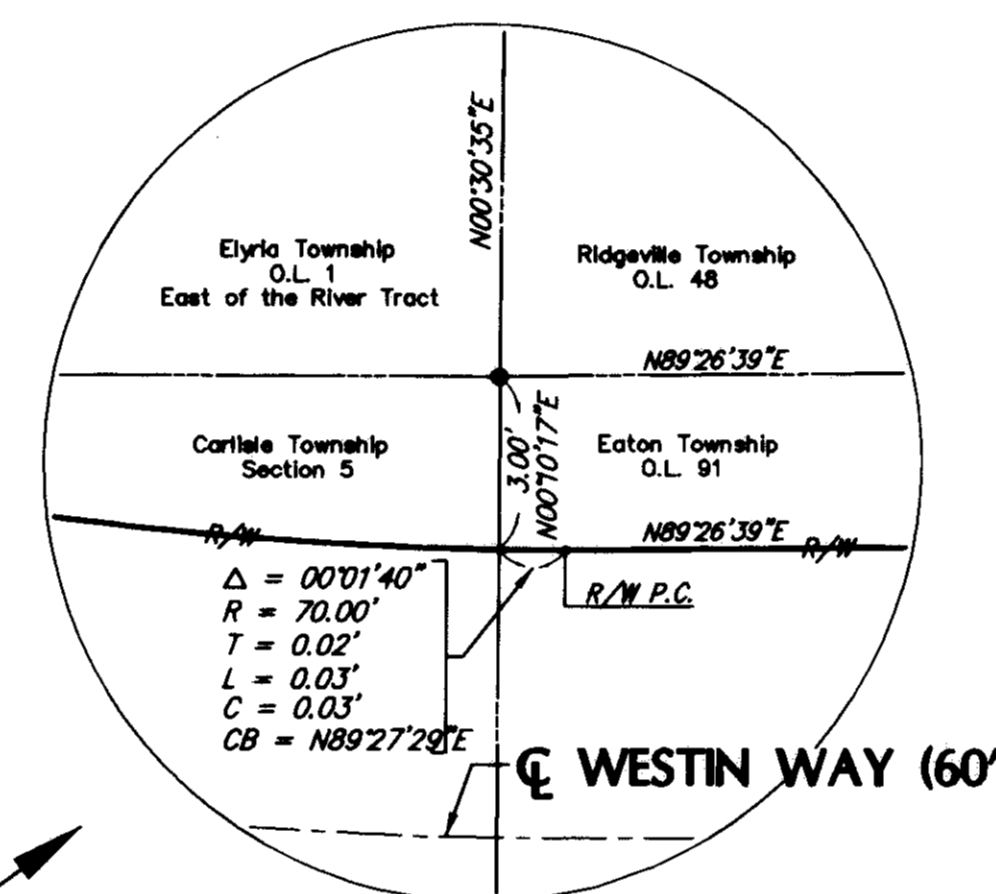
PART OF ORIGINAL EATON TOWNSHIP LOTS 91 & 92, ORIGINAL CARLISLE TOWNSHIP SECTION 5 AND ORIGINAL ELYRIA TOWNSHIP LOT 1 EAST OF THE RIVER TRACT NOW IN THE CITY OF ELYRIA, COUNTY OF LORAIN, STATE OF OHIO AND CONTAINING 53.6284 ACRES OF LAND OF WHICH 8.1812 ACRES ARE DEDICATED STREETS, 36.9552 ACRES ARE WITHIN BLOCKS AND 8.4920 ACRES ARE WITHIN THE SUBDIVISION OF LOTS 1 TO 31 INCLUSIVE

NOVEMBER 12, 1998

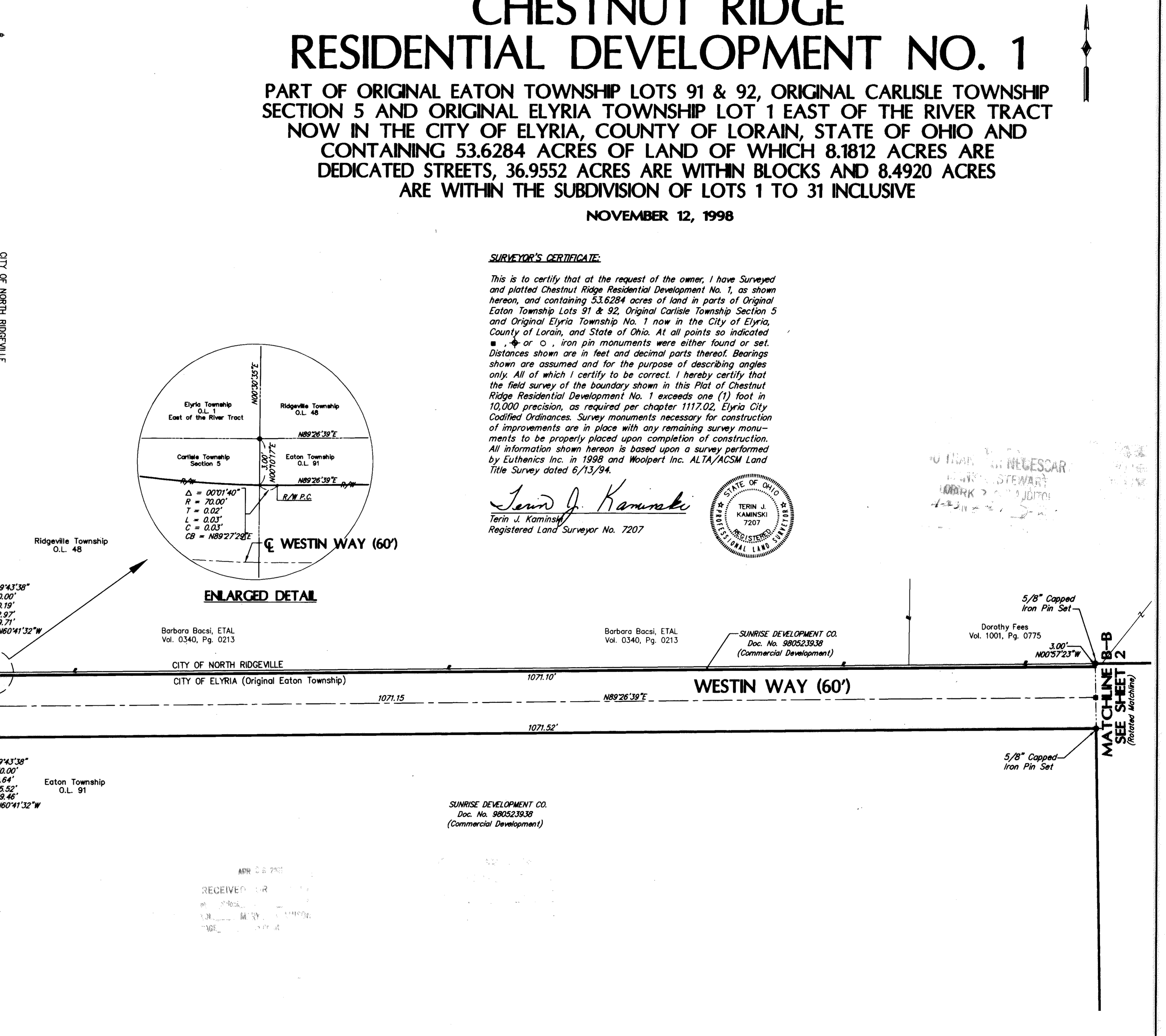
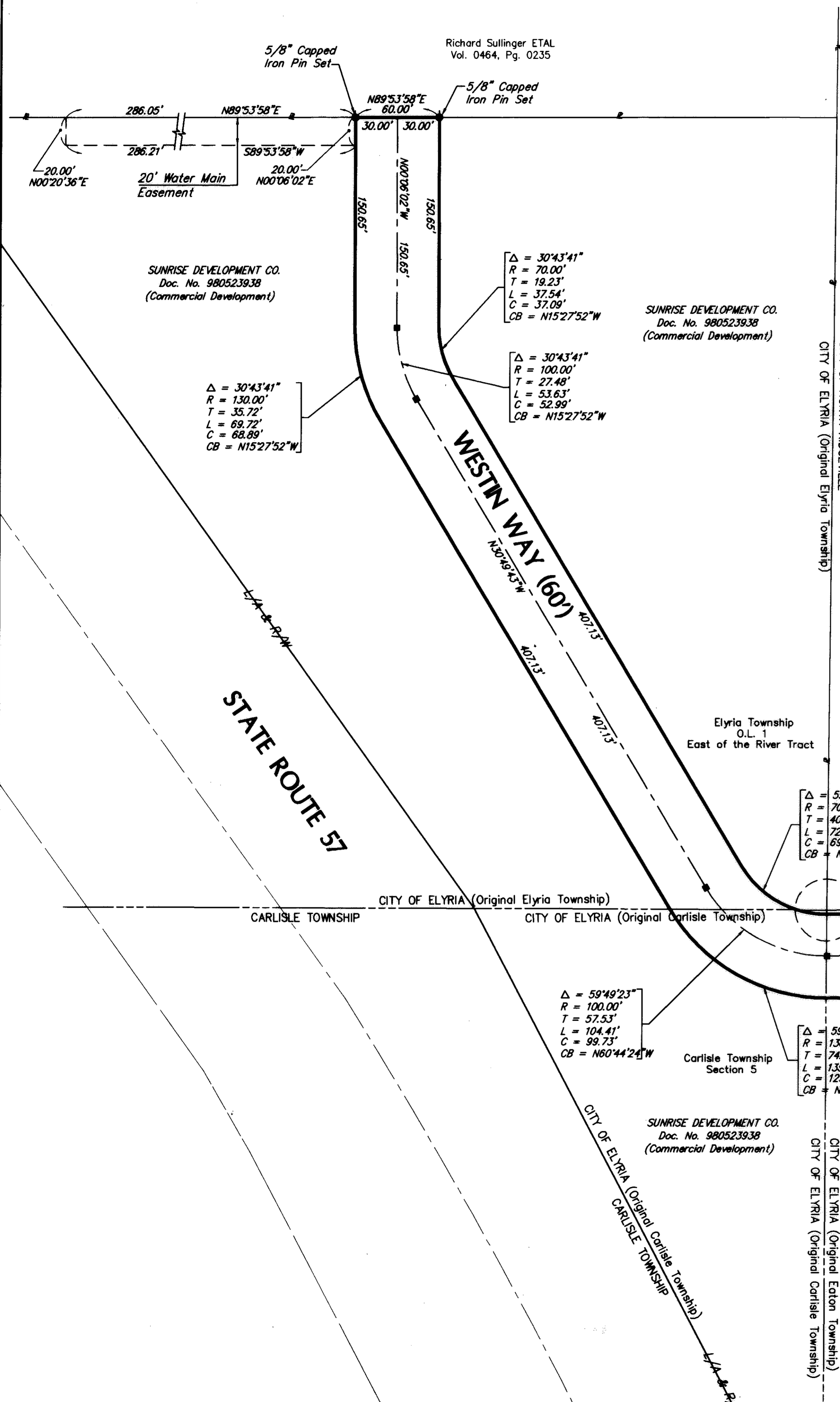
SURVEYOR'S CERTIFICATE:

This is to certify that at the request of the owner, I have Surveyed and platted Chestnut Ridge Residential Development No. 1, as shown hereon, and containing 53.6284 acres of land in parts of Original Eaton Township Lots 91 & 92, Original Carlisle Township Section 5 and Original Elyria Township No. 1 now in the City of Elyria, County of Lorain, and State of Ohio. At all points so indicated by \blacksquare , \blacklozenge or \circ , iron pin monuments were either found or set. Distances shown are in feet and decimal parts thereof. Bearings shown are assumed and for the purpose of describing angles only. All of which I certify to be correct. I hereby certify that the field survey of the boundary shown in this Plat of Chestnut Ridge Residential Development No. 1 exceeds one (1) foot in 10,000 precision, as required per chapter 1117.02, Elyria City Codified Ordinances. Survey monuments necessary for construction of improvements are in place with any remaining survey monuments to be properly placed upon completion of construction. All information shown hereon is based upon a survey performed by Euthenics Inc. in 1998 and Woolpert Inc. ALTA/ACSM Land Title Survey dated 6/13/94.

Terin J. Kaminski
Terin J. Kaminski
Registered Land Surveyor No. 7207



ENLARGED DETAIL



EUTHENICS INC.
CONSULTING ENGINEERS
CLEVELAND, OHIO

DESIGNED: VMB	CHECKED: WCH	DRAWN: VMB
DATE: NOV., 1998	DATE: NOV., 1998	SCALE: AS NOTED

- LEGEND**
- \blacksquare Proposed Iron Pin Monument Box Assembly
 - \blacklozenge 5/8" Capped Iron Pin Set
 - \circ Iron Pin Found



68/28