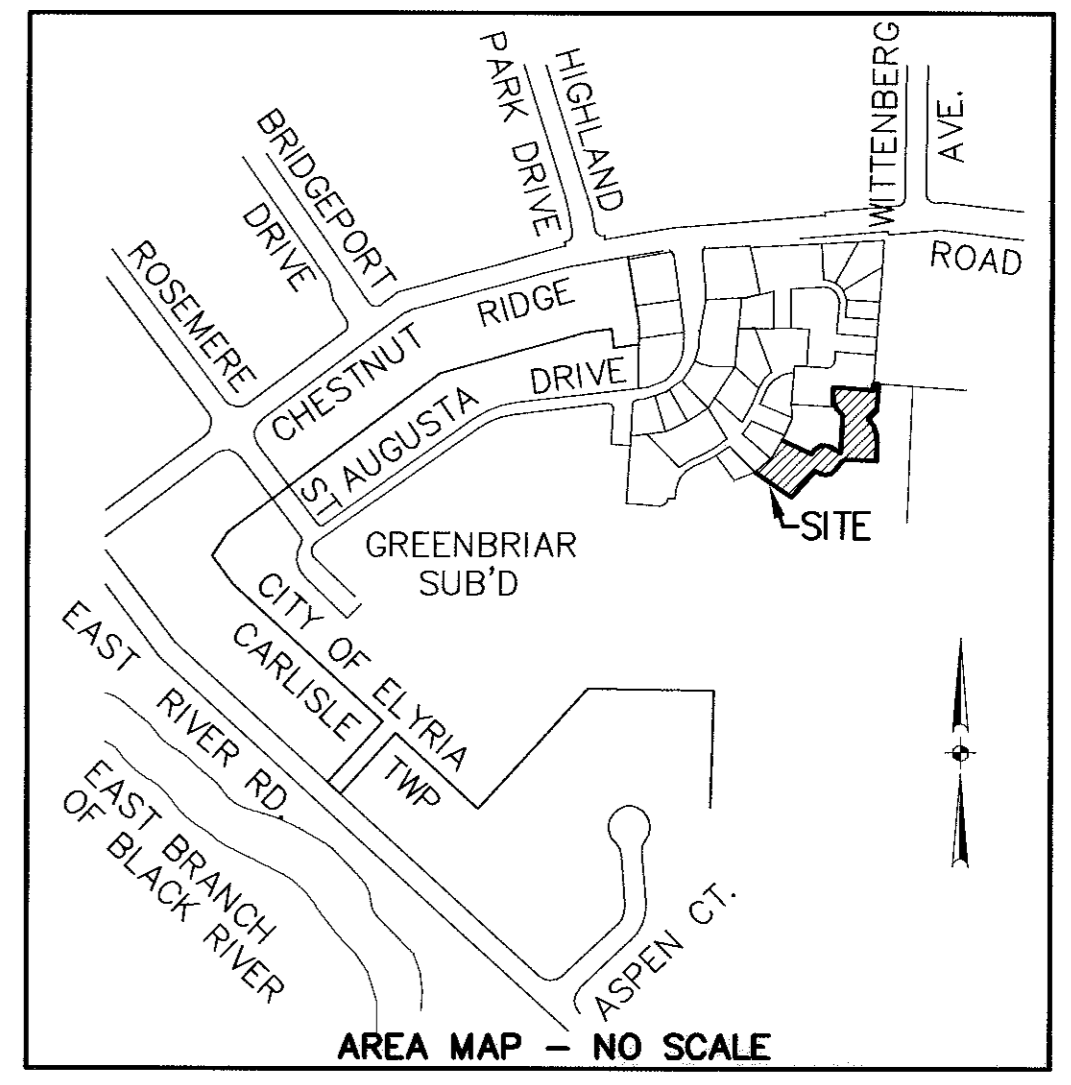


- LEGEND**
- 5/8" CAPPED REBAR SET
 - IRON PIN FOUND
 - ▣ MONUMENT BOX FOUND

TOTAL AREA PHASE 10
1.0785 AC.



CURVE	CURVE DATA					
	RADIUS	LENGTH	TANGENT	CHORD	BEARING	DELTA
C1	25.00'	39.27'	25.00'	35.36'	N48°54'17"E	90°00'00"
C2	89.00'	97.60'	54.36'	92.78'	S35°19'14"W	62°49'55"
C3	24.09'	28.52'	16.20'	26.88'	N52°10'47"W	67°49'53"
C4	111.00'	41.42'	20.95'	41.18'	S56°02'47"W	21°22'49"
C5	289.00'	92.98'	46.90'	92.58'	N57°31'10"E	18°26'05"
C6	289.00'	62.80'	31.52'	62.67'	N29°00'29"E	12°26'59"
C7	111.00'	61.91'	31.78'	61.11'	S38°45'42"W	31°57'26"
C8	89.00'	106.91'	60.97'	100.60'	N57°11'42"E	68°49'27"
C9	311.00'	48.48'	24.29'	48.43'	N35°46'40"E	8°55'51"
C10	311.00'	89.98'	45.31'	89.67'	N58°26'52"E	16°34'40"
C11	311.00'	47.79'	23.94'	47.74'	N54°33'40"E	8°48'16"
C12	311.00'	42.19'	21.13'	42.16'	N62°51'00"E	7°46'24"

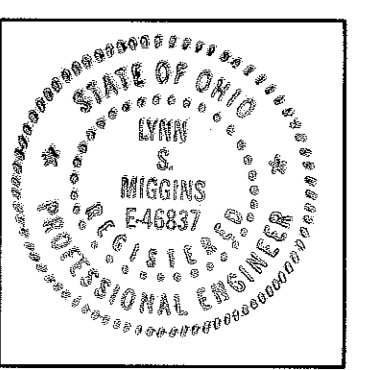
CONTINUED ON SHEET 3

SHEET INDEX

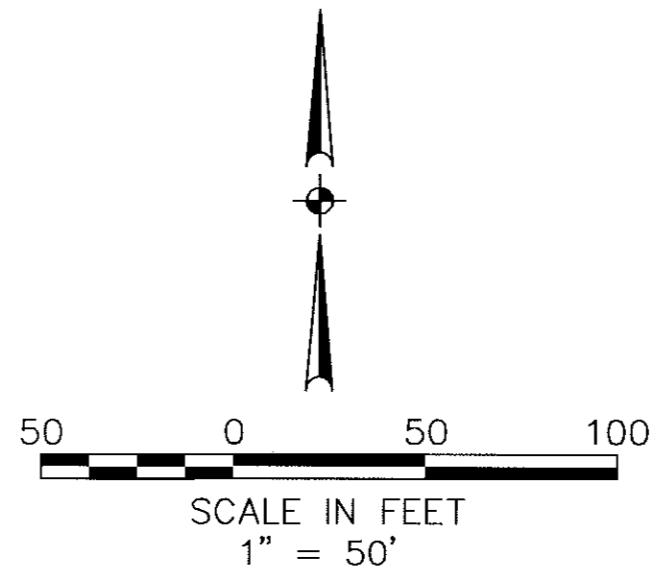
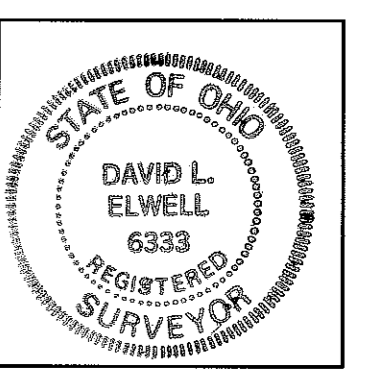
SHEET NO.	DESCRIPTION
1	SURVEY MAP & MISC.
2	SURVEY MAP & MISC. CONTINUED
3	CURVE DATA & OWNERSHIP TABLE
4	FLOOR & FOUNDATION PLANS
5	ELEVATION VIEWS

CERTIFICATION
THIS IS TO CERTIFY THAT THE ATTACHED DRAWINGS CORRECTLY REPRESENT THE BUILDINGS AS CONSTRUCTED AND THAT THERE ARE NO ENCROACHMENTS ON ADJACENT PROPERTIES, EXCEPT AS SHOWN.

Lynn S. Miggins
LYNN S. MIGGINS
PROFESSIONAL ENGINEER NO. 46837



David L. Ellwell
DAVID L. ELLWELL
PROFESSIONAL SURVEYOR NO. 6333



APR - 3 2001
RECEIVED FOR RECORD
at 10:05 o'clock A.M. in Plat RECORD
VOL. 68 MARY ANN JAMISON
PAGE 5 Lorain County Recorder
17, 18, 19, 20, 21 incl
\$ 216.00 Box: LCFC (L.M.)

TRANSFERRED
IN COMPLIANCE WITH SEC. 319-20A
OHIO REV. CODE
APR 3 2001
MARK R. STEWART
LORAIN COUNTY AUDITOR

DATE	DESCRIPTION	BY

KS ASSOCIATES, INC.
260 Burns Road, Suite 100
P.O. Box 569
Elyria, Ohio 44036
Phone (440) 365-4730
Fax (440) 365-4700
mailroom@ksassoc.com
www.ksassoc.com

STONEHEDGE CONDOMINIUMS
PHASE NO. 10
PART OF ORIGINAL CARLISLE TOWNSHIP SECTION NO. 5
CITY OF ELYRIA COUNTY OF LORAIN
STATE OF OHIO

SHEET 1 OF 5
JOB NO. 92424-10

CURVE DATA

A Δ = 38°07'27" R = 25.00' T = 8.64' L = 16.63' C = 16.33' CB = S25°28'22"E	F Δ = 14°39'14" R = 200.00' T = 25.72' L = 51.15' C = 51.01' CB = N16°05'46"E	K Δ = 97°04'40" R = 44.00' T = 49.80' L = 74.55' C = 65.95' CB = S44°38'03"E	P Δ = 32°18'52" R = 66.00' T = 19.12' L = 37.22' C = 36.73' CB = N77°00'57"W	U Δ = 29°37'44" R = 66.00' T = 17.46' L = 34.13' C = 33.75' CB = N46°02'39"W	Z Δ = 71°46'07" R = 29.31' T = 18.09' L = 31.31' C = 29.31' CB = S56°22'00"W
B Δ = 80°47'16" R = 130.00' T = 110.61' L = 183.30' C = 168.49' CB = S42°38'06"W	G Δ = 26°29'29" R = 55.00' T = 12.95' L = 25.43' C = 25.20' CB = N76°45'16"W	L Δ = 88°45'25" R = 66.00' T = 64.58' L = 102.24' C = 92.32' CB = N48°47'41"W	Q Δ = 26°48'49" R = 66.00' T = 15.73' L = 30.89' C = 30.61' CB = N17°49'23"W	V Δ = 90°00'00" R = 25.00' T = 25.00' L = 39.27' C = 35.36' CB = S48°54'17"W	AA Δ = 51°10'38" R = 87.45' T = 41.88' L = 78.11' C = 75.54' CB = S21°11'35"E
C Δ = 24°32'58" R = 190.00' T = 41.34' L = 81.41' C = 80.79' CB = N14°30'57"E	H Δ = 8°47'02" R = 111.00' T = 8.53' L = 17.02' C = 17.00' CB = S82°26'06"W	M Δ = 08°19'15" R = 66.00' T = 4.80' L = 9.59' C = 9.58' CB = N00°15'21"W	R Δ = 22°39'54" R = 190.00' T = 38.08' L = 75.16' C = 74.67' CB = N38°07'23"E	W Δ = 111°07'22" R = 44.00' T = 64.17' L = 85.34' C = 72.58' CB = S76°02'37"W	BB Δ = 58°56'55" R = 71.00' T = 40.13' L = 73.05' C = 69.87' CB = N25°34'00"W
D Δ = 40°05'31" R = 25.00' T = 9.12' L = 17.49' C = 17.14' CB = N13°39'13"E	I Δ = 0°51'42" R = 589.00' T = 4.43' L = 8.86' C = 8.86' CB = N78°28'26"E	N Δ = 20°15'21" R = 190.00' T = 33.94' L = 67.17' C = 66.82' CB = N72°54'03"E	S Δ = 13°19'02" R = 190.00' T = 22.18' L = 44.16' C = 44.06' CB = N56°06'51"E	X Δ = 110°53'45" R = 44.00' T = 63.90' L = 85.16' C = 72.48' CB = N79°51'52"E	
E Δ = 53°07'38" R = 25.00' T = 12.50' L = 23.18' C = 22.36' CB = N60°15'48"E	J Δ = 2°48'19" R = 589.00' T = 14.42' L = 28.84' C = 28.84' CB = N85°25'27"E	O Δ = 56°14'17" R = 190.00' T = 101.53' L = 186.49' C = 179.10' CB = N54°54'35"E	T Δ = 13°46'24" R = 190.00' T = 22.95' L = 45.67' C = 45.56' CB = N69°39'34"E	Y Δ = 43°03'41" R = 25.00' T = 9.86' L = 18.79' C = 18.35' CB = S66°13'06"E	

OWNERSHIP PERCENTAGES

UNIT NO.	SQ. FT.	ELEV. F.F.	% OWNERSHIP
1	1661.92	756.59	2.1140
2	1602.38	756.59	2.0383
3	1191.64	755.86	1.5158
4	1214.22	755.86	1.5445
5	1602.38	757.42	2.0383
6	1661.92	757.42	2.1140
7	1658.47	756.00	2.1096
8	1661.92	756.00	2.1140
9	1196.28	756.42	1.5217
10	1213.70	756.42	1.5438
11	1196.28	756.76	1.5217
12	1213.70	756.76	1.5438
13	1599.80	754.87	2.0350
14	1393.43	756.44	1.7725
15	1713.47	756.37	2.1796
16	1733.47	756.37	2.2050
17	1658.47	757.40	2.1096
18	1661.92	757.41	2.1140
19	1196.28	755.58	1.5217
20	1393.43	757.01	1.7725
21	1393.43	757.56	1.7725
22	1393.43	754.55	1.7725
23	1196.28	754.53	1.5217
24	1213.70	754.54	1.5438
25	1658.47	758.13	2.1096
26	1661.92	758.13	2.1140
27	1393.43	755.19	1.7725
28	1393.43	754.43	1.7725
29	1393.43	757.07	1.7725
30	1196.28	756.16	1.5217
31	1196.28	755.32	1.5217
32	1393.43	756.45	1.7725
33	1393.43	756.64	1.7725
34	1213.70	753.83	1.5438
35	1393.43	753.61	1.7725
36	1393.43	754.43	1.7725
37	1717.06	754.06	2.1841
38	1717.06	754.20	2.1841
39	1717.06	755.50	2.1841
40	1661.92	756.29	2.1140
41	1658.47	756.29	2.1096
42	1717.06	755.93	2.1841
43	1393.43	754.62	1.7725
44	1717.06	754.78	2.1841
45	1717.06	755.45	2.1841
46	1253.34	754.10	1.5943
47	1705.23	756.45	2.1691
48	1573.19	755.60	2.0011
49	1705.23	755.96	2.1691
50	1705.23	755.61	2.1691
51	1417.96	753.78	1.8037
52	1524.05	756.29	1.9386
53	1412.21	755.93	1.7964
TOTAL	78,615.20		100.00%

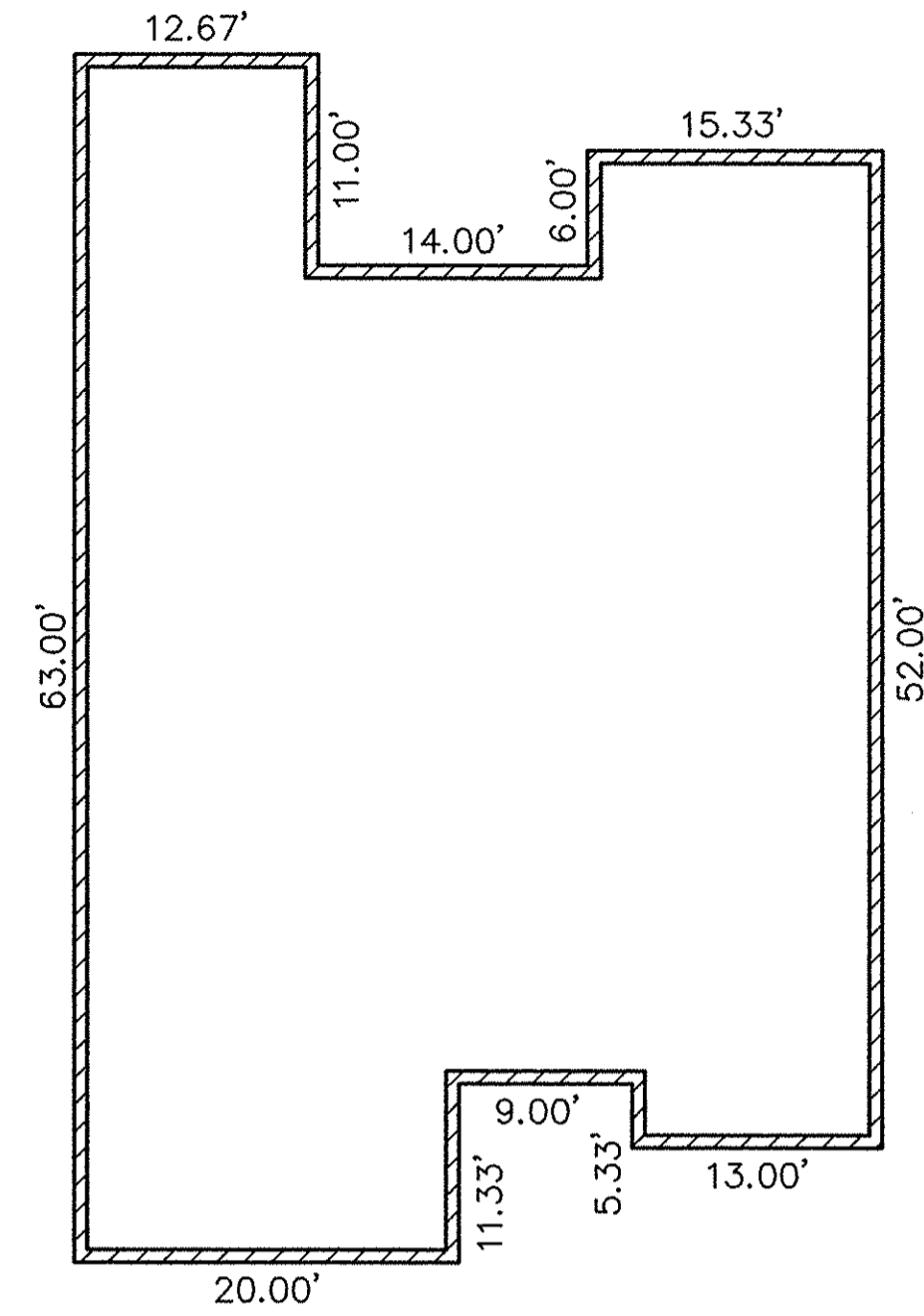
DATE: 1-04-01 \DWG. PATH: R:\92424C10\DDT\DWG\10-TABL01

REVISIONS	DATE	DESCRIPTION	BY

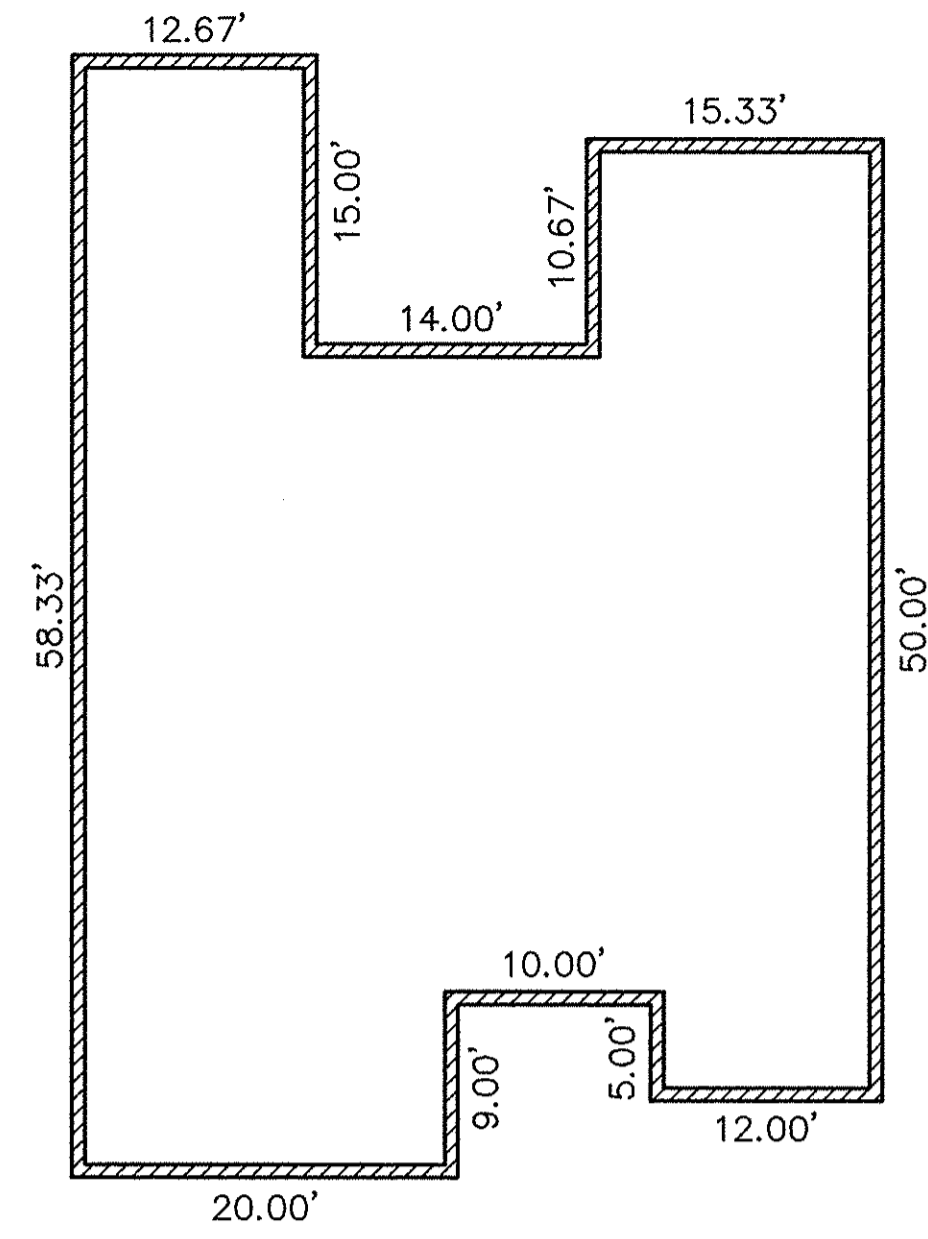


STONEHEDGE CONDOMINIUMS
PHASE NO. 10
 PART OF ORIGINAL TOWNSHIP SECTION NO. 5
 CITY OF ELYRIA COUNTY OF LORAIN
 STATE OF OHIO

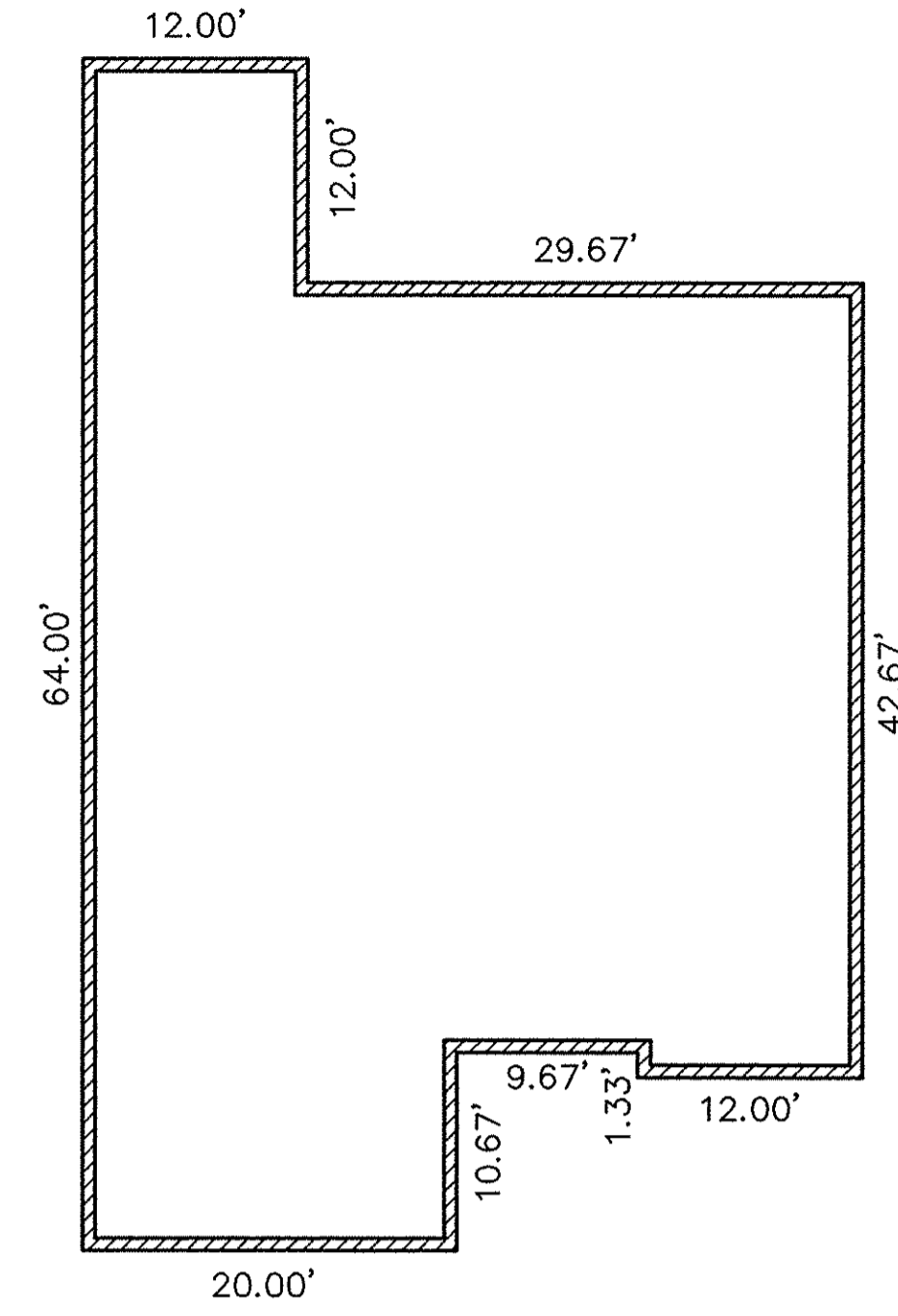
SHEET **3** OF **5**
 JOB NO. **92424-10**



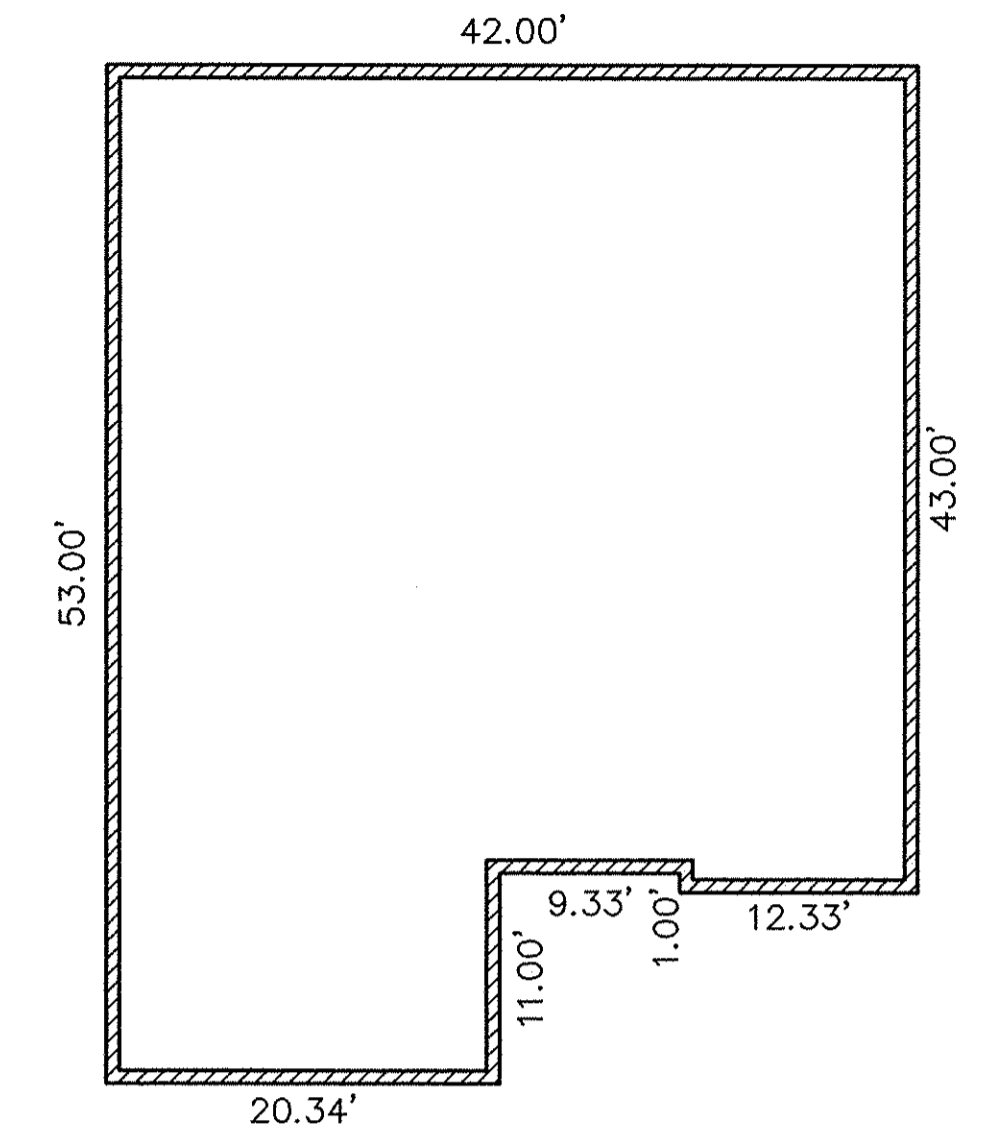
FOUNDATION PLAN - UNIT 50



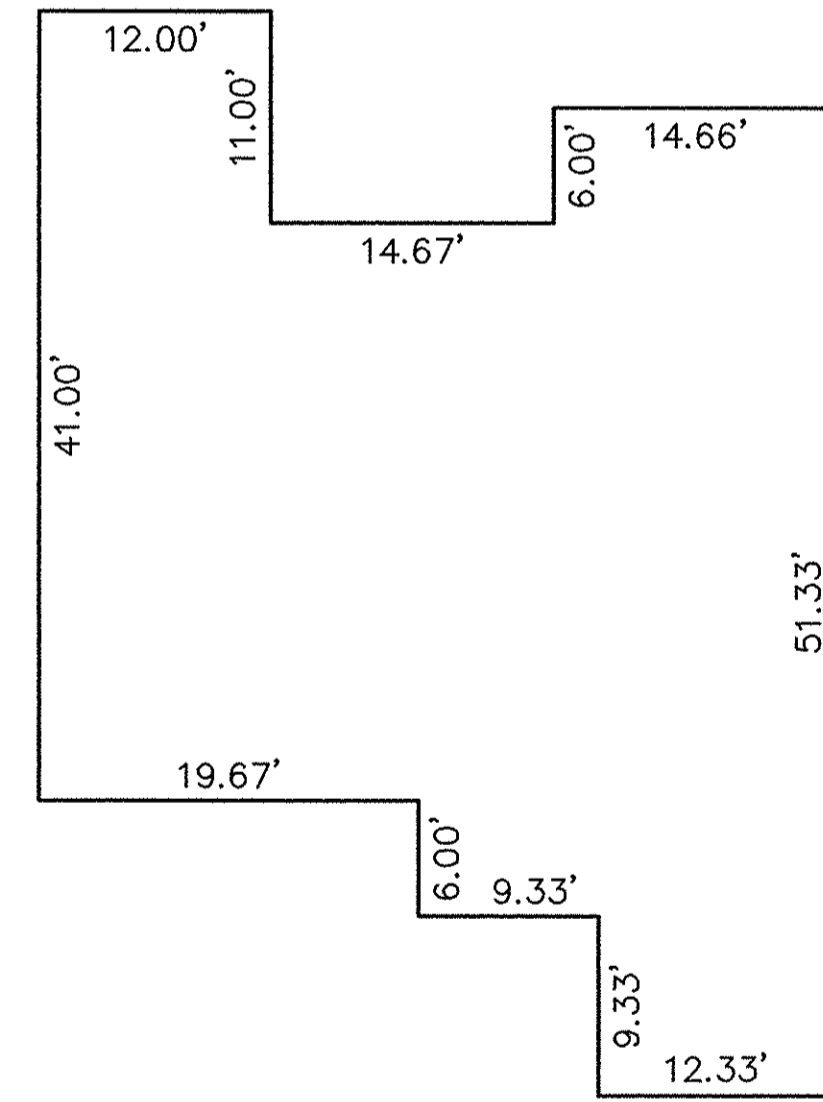
FOUNDATION PLAN - UNIT 51



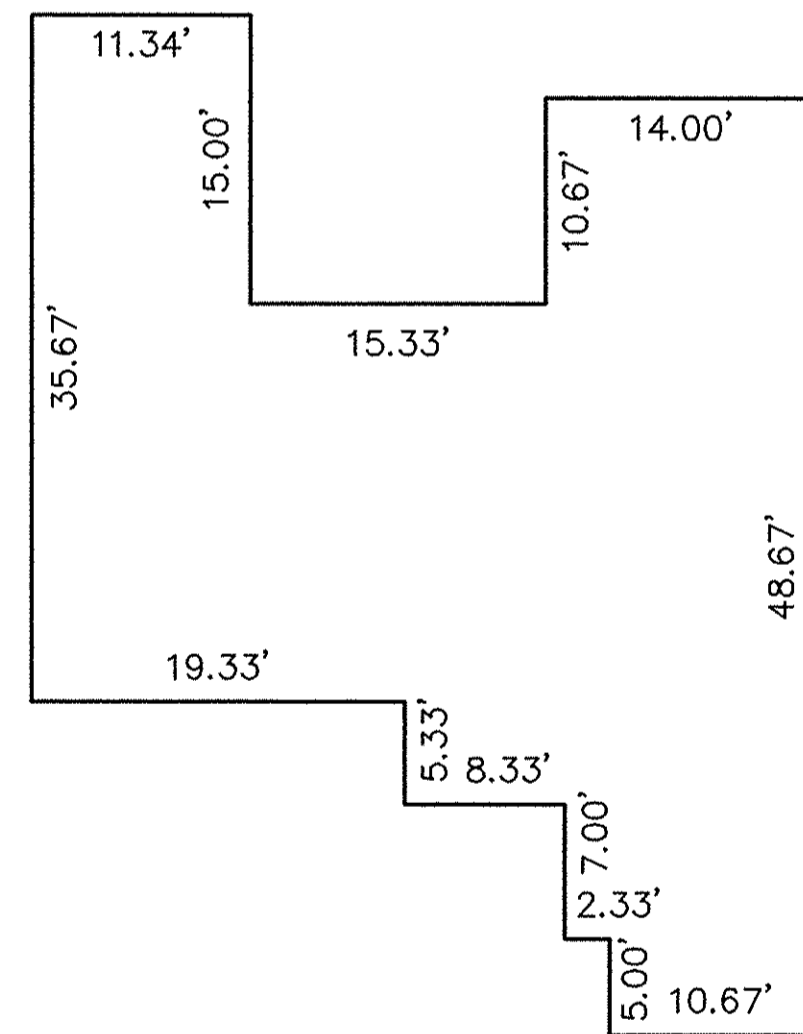
FOUNDATION PLAN - UNIT 52



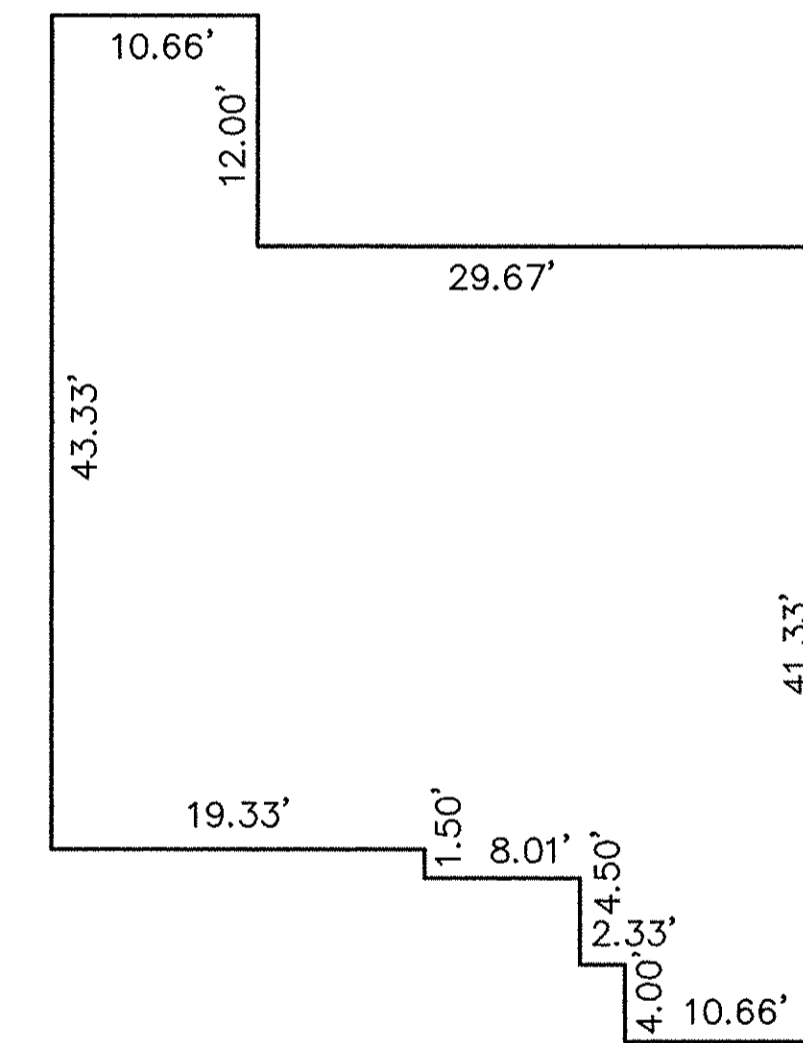
FOUNDATION PLAN - UNIT 53



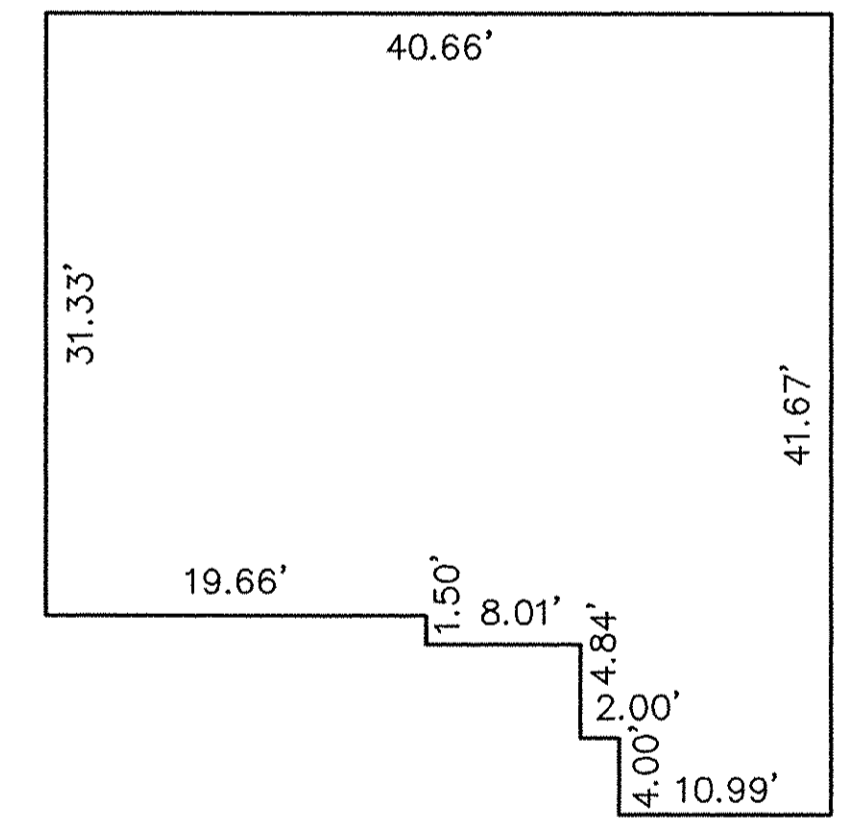
FLOOR PLAN - UNIT 50
(INTERIOR DIMENSIONS)



FLOOR PLAN - UNIT 51
(INTERIOR DIMENSIONS)

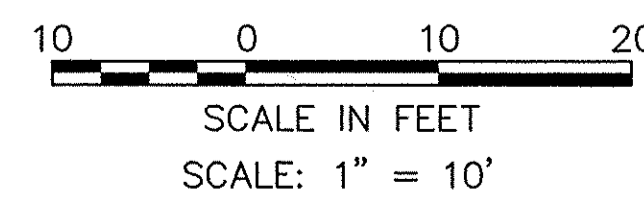


FLOOR PLAN - UNIT 52
(INTERIOR DIMENSIONS)



FLOOR PLAN - UNIT 53
(INTERIOR DIMENSIONS)

DATE: 1-04-01 DWG. PATH: R:\92424C10\DDT\DWG\10-PLAN01



REVISIONS	DATE	DESCRIPTION	BY

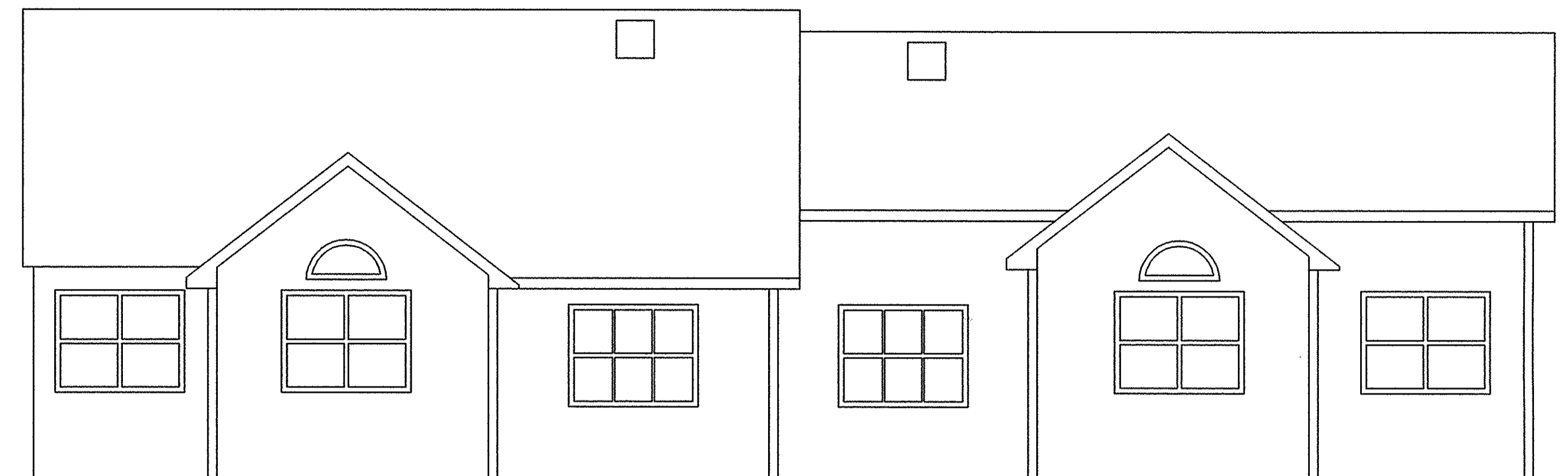
KS ASSOCIATES
 KS ASSOCIATES, INC.
 260 Burns Road, Suite 100
 P.O. Box 569
 Elyria, Ohio 44036
 Phone (440) 365-4730
 Fax (440) 365-4790
 mailroom@ksassoc.com
 www.ksassoc.com

**STONEHEDGE CONDOMINIUMS
 PHASE NO. 10**
 PART OF ORIGINAL TOWNSHIP SECTION NO. 5
 CITY OF ELYRIA COUNTY OF LORAIN
 STATE OF OHIO

SHEET
4 OF
5
 JOB NO.
92424-10

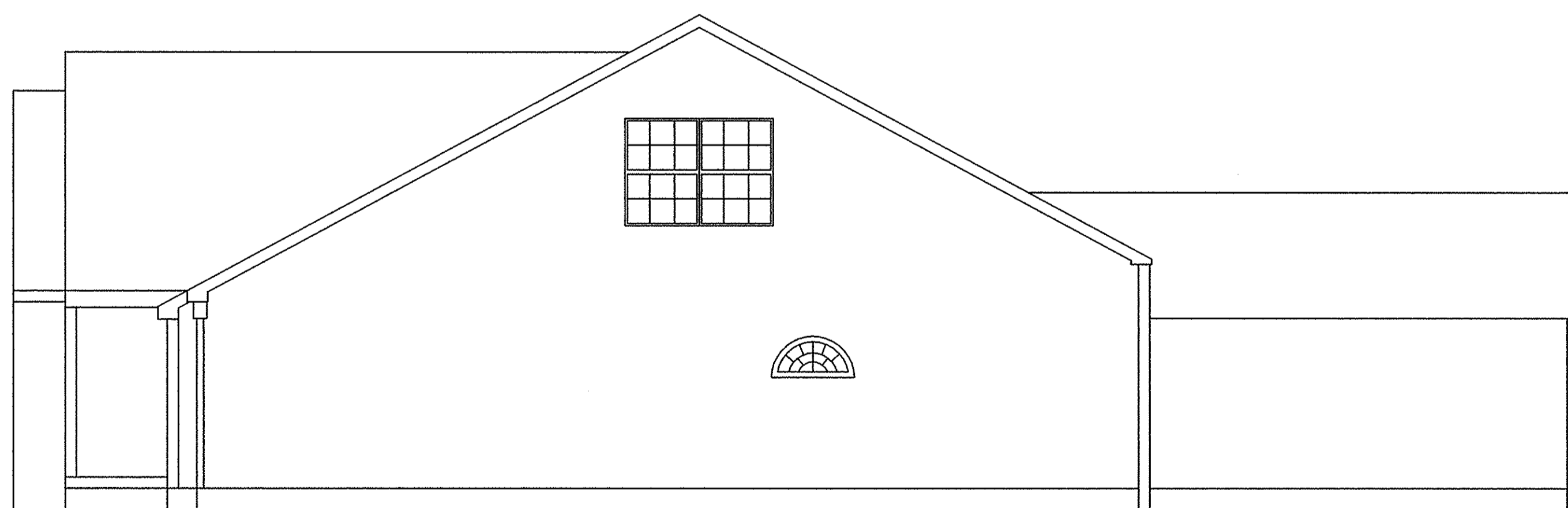


FRONT ELEVATION

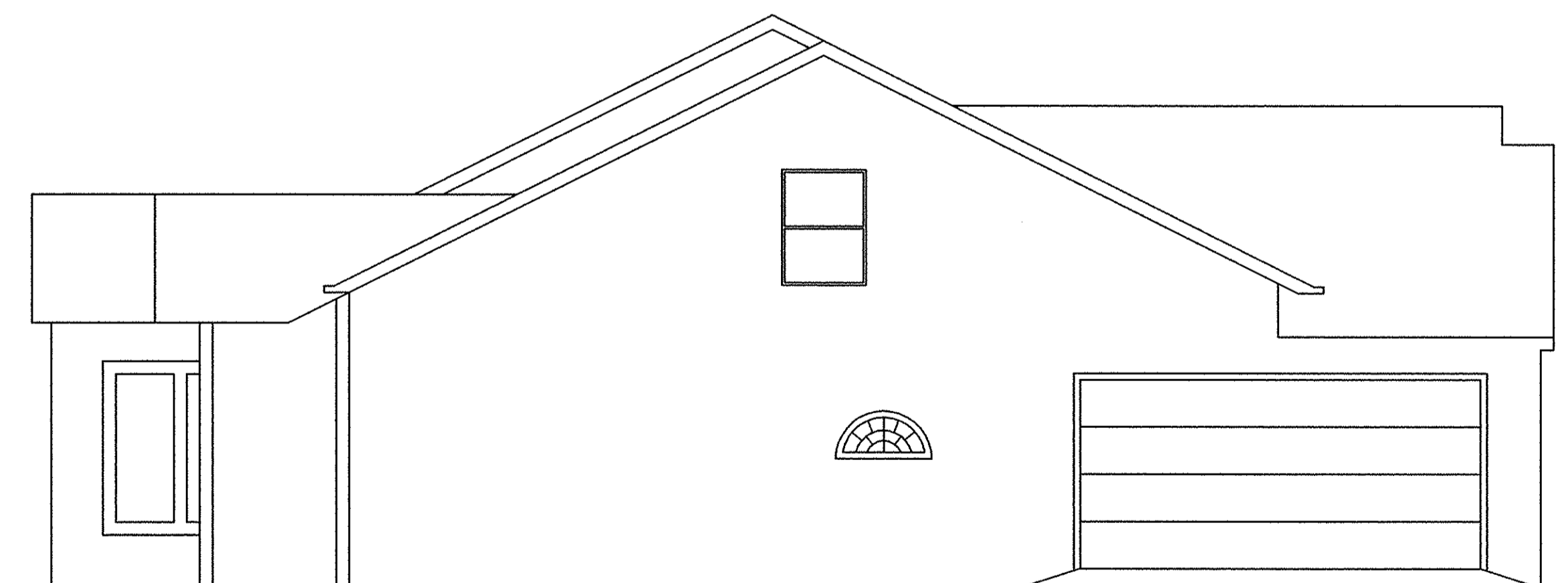


REAR ELEVATION

NOTE: ELEVATION VIEWS SHOWN ARE TYPICAL FOR OVERALL SITE. INDIVIDUAL VARIATIONS SUBJECT TO GARAGE ORIENTATION, UNIT REVERSAL, SINGLE UNIT CONSTRUCTION, ETC. BUILDINGS ARE UNDER CONSTRUCTION.



LEFT SIDE ELEVATION



RIGHT SIDE ELEVATION

DATE: 1-04-01\DWG. PATH: R:\92424C10\LDDT\DWG\10-ELEV01

REVISIONS	DATE	DESCRIPTION	BY

KS ASSOCIATES
 KS ASSOCIATES, INC.
 260 Burns Road, Suite 100
 P.O. Box 569
 Elvira, Ohio 44036
 Phone (440) 365-4730
 Fax (440) 365-4790
 mailroom@ksassoc.com
 www.ksassoc.com

**STONEHEDGE CONDOMINIUMS
 PHASE NO. 10**

ELEVATION VIEWS

SHEET 5 OF 5
 JOB NO. 92424-10