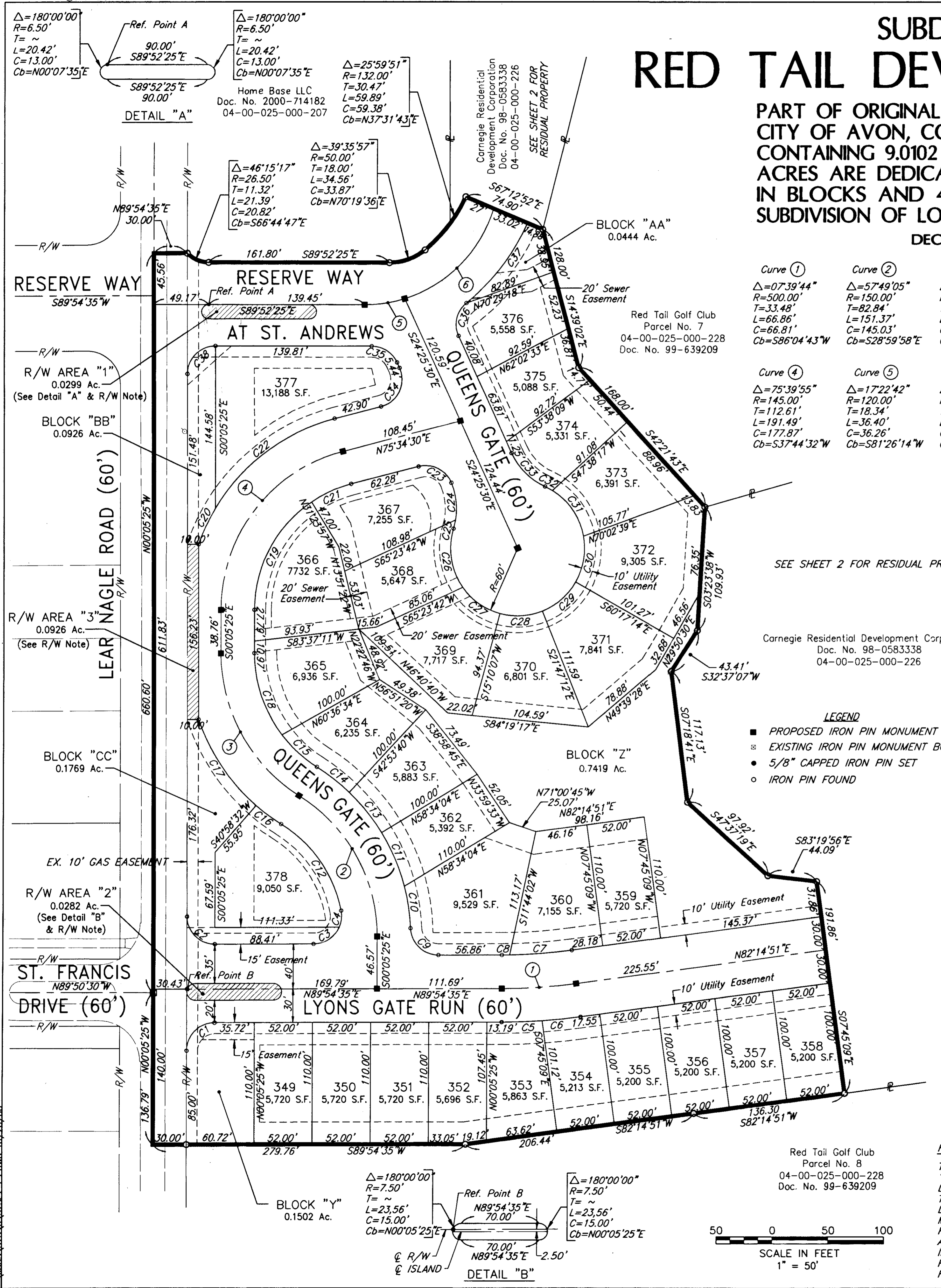


SUBDIVISION PLAT RED TAIL DEVELOPMENT NO. 6

PART OF ORIGINAL AVON TOWNSHIP SECTION NO. 25
CITY OF AVON, COUNTY OF LORAIN, STATE OF OHIO
CONTAINING 9.0102 ACRES OF LAND OF WHICH 3.2474
ACRES ARE DEDICATED STREETS, 1.2060 ACRES ARE
IN BLOCKS AND 4.5568 ACRES ARE WITHIN THE
SUBDIVISION OF LOTS 349 TO 378 INCLUSIVE.

DECEMBER 26, 2000



Curve 1: $\Delta=07'39'44''$, $R=500.00'$, $T=33.48'$, $L=66.86'$, $C=66.81'$, $Cb=586'04'43''W$

Curve 2: $\Delta=57'49'05''$, $R=150.00'$, $T=82.84'$, $L=151.37'$, $C=145.03'$, $Cb=528'59'58''E$

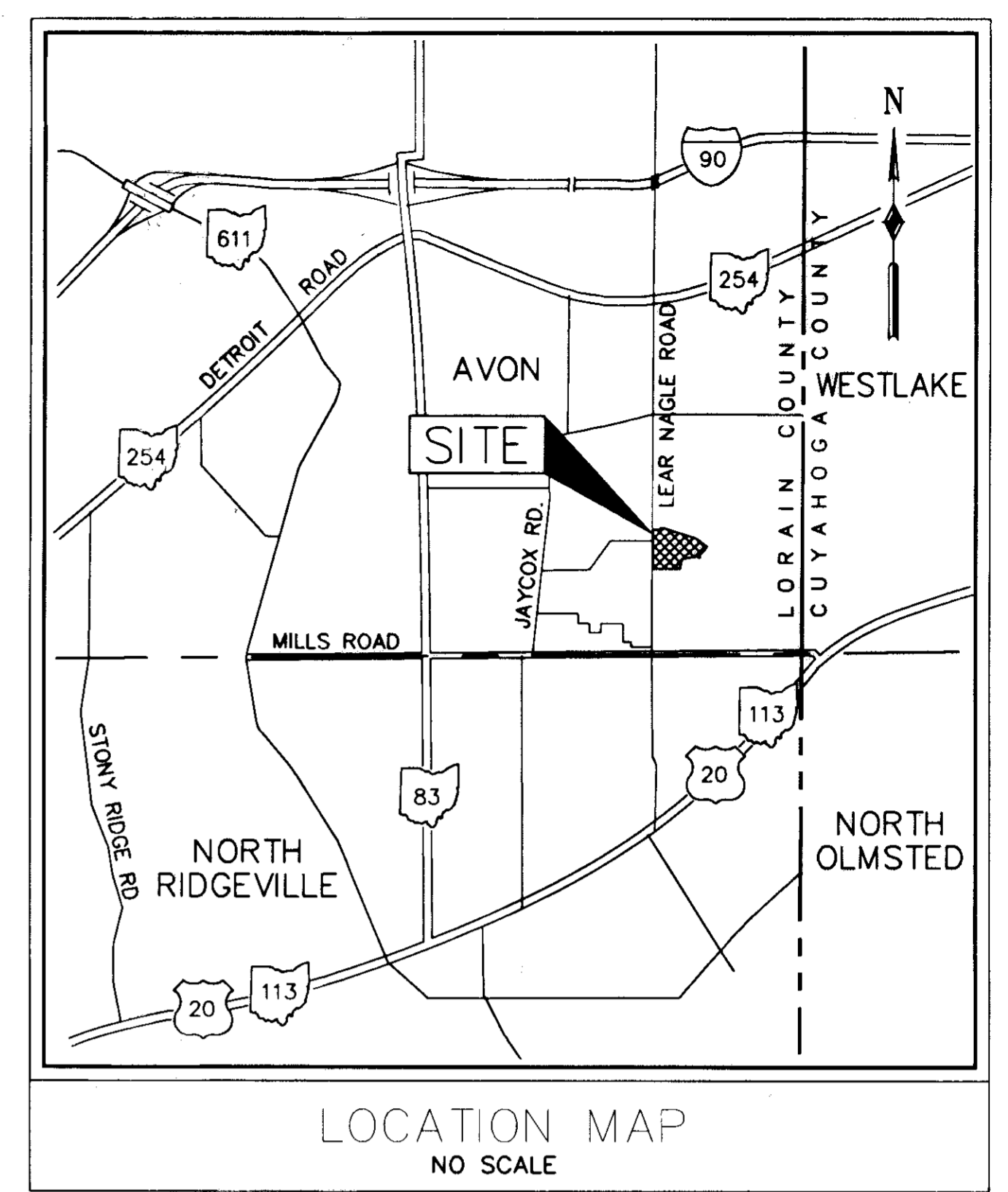
Curve 3: $\Delta=57'49'05''$, $R=150.00'$, $T=82.84'$, $L=151.37'$, $C=145.03'$, $Cb=528'59'58''E$

Curve 4: $\Delta=75'39'55''$, $R=145.00'$, $T=112.61'$, $L=191.49'$, $C=177.87'$, $Cb=537'44'32''W$

Curve 5: $\Delta=17'22'42''$, $R=120.00'$, $T=18.34'$, $L=36.40'$, $C=36.26'$, $Cb=581'26'14''W$

Curve 6: $\Delta=56'02'06''$, $R=120.00'$, $T=63.85'$, $L=117.36'$, $C=112.74'$, $Cb=544'43'49''W$

Curve No.	Radius	Delta	Arc Length	Tangent	Chord
C1	25.00'	90°00'00"	39.27'	25.00'	S44°54'35"W 35.36'
C2	25.00'	90°00'00"	39.27'	25.00'	S45°05'25"E 35.36'
C3	25.00'	66°25'19"	28.98'	16.37'	N56°41'55"E 27.39'
C4	25.00'	34°45'46"	15.17'	7.83'	N06°06'23"E 14.94'
C5	530.00'	3°56'07"	36.40'	18.21'	N87°56'31"E 36.40'
C6	530.00'	3°43'37"	34.47'	17.24'	N84°06'39"E 34.47'
C7	470.00'	6°48'37"	55.86'	27.97'	N85°39'09"E 55.83'
C8	470.00'	0°51'07"	6.99'	3.49'	N89°29'01"E 6.99'
C9	25.00'	87°38'39"	38.24'	23.99'	S46°16'06"E 34.62'
C10	180.00'	12°11'40"	38.31'	19.23'	N08°32'37"W 38.24'
C11	180.00'	16°47'29"	52.75'	26.57'	N23°02'11"W 52.56'
C12	120.00'	46°38'00"	97.67'	51.72'	N34°35'30"W 95.00'
C13	180.00'	14°45'06"	46.34'	23.30'	N38°48'29"W 46.22'
C14	180.00'	11°43'28"	36.83'	18.48'	N52°02'46"W 36.77'
C15	120.00'	20°22'54"	42.69'	21.57'	S47°43'03"E 42.46'
C16	180.00'	8°53'02"	27.91'	13.98'	S53°27'59"E 27.88'
C17	180.00'	29°44'45"	93.45'	47.80'	S34°09'05"E 92.40'
C18	120.00'	37°26'10"	78.41'	40.66'	S18°48'31"E 77.02'
C19	115.00'	56°13'44"	112.86'	61.44'	S28°01'26"W 108.38'
C20	175.00'	15°35'59"	35.43'	17.78'	S25°10'21"W 35.37'
C21	115.00'	19°26'11"	39.01'	19.69'	S65°51'24"W 38.82'
C22	175.00'	44°36'09"	136.23'	71.78'	S53°16'25"W 132.82'
C23	25.00'	81°46'12"	35.68'	21.64'	N63°32'24"W 32.73'
C24	60.00'	32°07'02"	33.63'	17.27'	N06°35'47"W 33.19'
C25	60.00'	7°31'21"	7.88'	3.94'	N13°13'24"E 7.87'
C26	60.00'	52°06'36"	54.57'	29.34'	S09°04'14"E 52.71'
C27	60.00'	39°42'21"	41.58'	21.66'	S54°58'42"E 40.75'
C28	60.00'	36°57'19"	38.70'	20.05'	N86°41'28"E 38.03'
C29	60.00'	38°30'03"	40.32'	20.95'	N48°57'47"E 39.56'
C30	60.00'	40°04'28"	41.97'	21.88'	N09°40'31"E 41.12'
C31	60.00'	48°18'41"	50.59'	26.91'	N34°31'03"W 49.11'
C32	60.00'	7°09'41"	7.50'	3.75'	N62°15'14"W 7.49'
C33	60.00'	41°24'35"	43.36'	22.68'	S45°07'48"E 42.43'
C34	25.00'	100°00'00"	43.63'	29.79'	N25°34'30"E 38.30'
C35	25.00'	65°26'55"	28.56'	16.06'	N57°08'58"W 27.03'
C36	25.00'	75°24'38"	32.90'	19.33'	S13°16'49"W 30.58'
C37	192.00'	27°00'03"	90.48'	46.10'	N37°29'06"E 89.65'
C38	25.00'	90°13'00"	39.36'	25.09'	S45°01'05"W 35.42'



OWNERS CERTIFICATION
ACCEPTANCE
WE, THE UNDERSIGNED OWNER, CARNEGIE RESIDENTIAL DEVELOPMENT CORPORATION HEREBY CERTIFY THAT THIS PLAT CORRECTLY REPRESENTS RED TAIL DEVELOPMENT NO. 6, A SUBDIVISION OF LOTS 349 TO 378 INCLUSIVE, AND DO HEREBY ACCEPT THIS PLAT OF SAME. 3.2474 Ac. DEDICATED TO CITY STREETS SHOWN IN PLAT.
IN WITNESS WHEREOF, WE CARNEGIE RESIDENTIAL DEVELOPMENT CORPORATION, BY MARY KHOURI, PRESIDENT, HAVE HEREUNTO SET OUR HANDS THIS 29 DAY OF January 2000.
CARNEGIE RESIDENTIAL DEVELOPMENT CORPORATION
MARY KHOURI, PRESIDENT

STATE OF OHIO
COUNTY OF LORAIN S.S.
THE FOREGOING INSTRUMENT WAS ACKNOWLEDGED BEFORE ME THIS 29 DAY OF January 2000.
NOTARY PUBLIC
MY COMM. EXPIRES 10-03-03
APPROVALS
THIS PLAT IS APPROVED FOR RECORDING PURPOSES ONLY THIS 21 DAY OF Feb 2000, 2001.
CITY ENGINEER
THIS PLAT IS APPROVED FOR RECORDING PURPOSES ONLY THIS 22 DAY OF Feb 2000, 2001.
PLANNING COMMISSION-CHAIRPERSON
THIS PLAT IS APPROVED FOR RECORDING PURPOSES ONLY THIS 29 DAY OF Jan 2000. THIS APPROVAL DOES NOT CONSTITUTE AN ACCEPTANCE OF THE DEDICATION OF ANY PUBLIC STREET OR HIGHWAY DEDICATED HEREON.
COUNCIL PRESIDENT

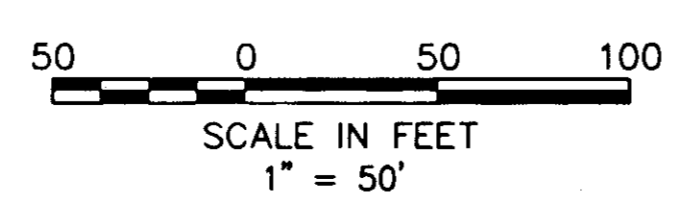
TRANSFERRED
RECEIVED FOR RECORD
FEB 06 2001
LORAIN COUNTY RECORDER

THIS IS TO CERTIFY TO THE OWNERS OF LAND SHOWN HERON THAT THIS PLAT AND THE SURVEY WERE MADE IN ACCORDANCE WITH THE MINIMUM STANDARDS FOR LAND SURVEYS SECTION 4733.37 OF THE OHIO ADMINISTRATIVE CODE. DISTANCES SHOWN HERON ARE IN FEET AND DECIMAL PARTS THEREOF; BEARINGS ARE TO AN ASSUMED MERIDIAN AND ARE SHOWN TO DEFINE ANGLES ONLY; IRON PINS AND MONUMENTS WERE FOUND OR SET AS INDICATED ON THE PLAT.

TERIN J. KAMINSKI, PROFESSIONAL LAND SURVEYOR

LOT NUMBER	SIDE	FRONT	REAR
349 thru 361	5'	5'	20'
362 thru 364	5'	5'	20'
365	10' (N)	5' (S)	20'
366	5' (N)	10' (S)	15'
367	15' (N)	5' (S)	20'
368	5' (N)	10' (S)	15'
369	10' (N)	5' (S)	15'
370 thru 376	5'	5'	15'
377	20' (N)	20' (S)	15'
378	10' (N)	5' (S)	15'

R/W NOTE:
THE ISLAND AREAS, (RIGHT OF WAY AREA "1", "2", AND RIGHT OF WAY AREA "3") SHALL BE DEDICATED TO THE CITY OF AVON AS PART OF THE DEDICATION OF THE ROAD RIGHT-OF-WAY. DURING DEVELOPMENT, THE DEVELOPER SHALL MAINTAIN THESE ISLAND AREAS. THEREAFTER, THE RED TAIL DEVELOPMENT NO. 6 HOMEOWNER'S ASSOCIATION SHALL MAINTAIN PUBLIC LIABILITY INSURANCE AND SHALL HOLD THE CITY OF AVON HARMLESS FROM LIABILITY RESULTING FROM FAILURE TO MAINTAIN



REVISIONS

EUTHEMICS INC.
CONSULTING ENGINEERS
975 KENNEDY CIRCLE, CLEVELAND, OHIO 44131
PHONE (216) 749-1555 - FAX (216) 749-1755

RED TAIL DEVELOPMENT NO. 6
SUBDIVISION PLAT

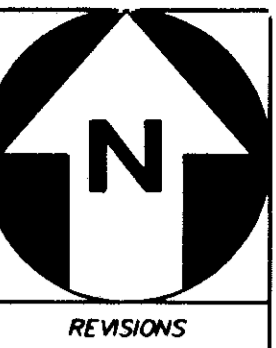
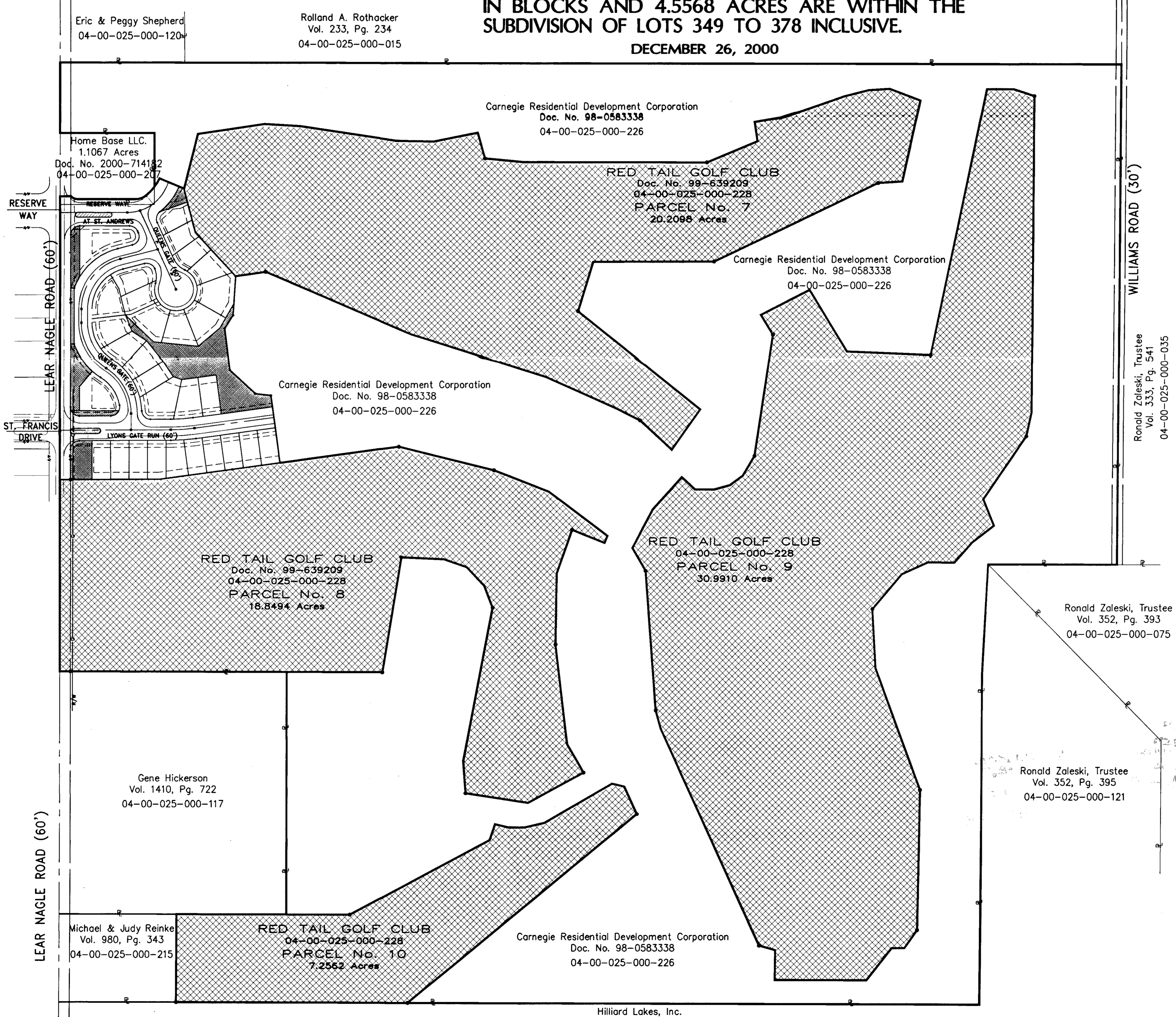
HORIZ. SCALE: 1"=50'
VERT. SCALE: ---
DESIGNED: VMB
DRAWN: VMB, CHECKED: RAB
DATE: 12/26/00
DRAWING NAME: 375E1-PT

1/2

SUBDIVISION PLAT RED TAIL DEVELOPMENT NO. 6

PART OF ORIGINAL AVON TOWNSHIP SECTION NO. 25
CITY OF AVON, COUNTY OF LORAIN, STATE OF OHIO
CONTAINING 9.0102 ACRES OF LAND OF WHICH 3.2474
ACRES ARE DEDICATED STREETS, 1.2060 ACRES ARE
IN BLOCKS AND 4.5568 ACRES ARE WITHIN THE
SUBDIVISION OF LOTS 349 TO 378 INCLUSIVE.

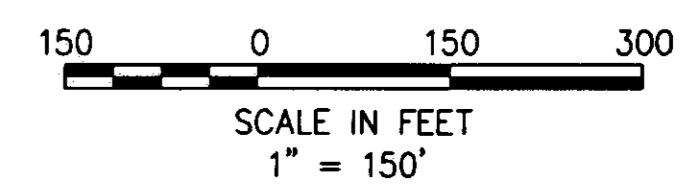
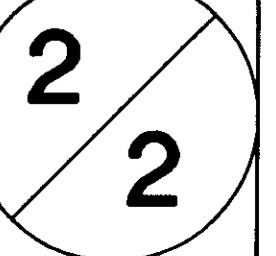
DECEMBER 26, 2000



EUTHENICS INC.
CONSULTING ENGINEERS
975 KENNEDY CIRCLE, CLEVELAND, OHIO 44131
PHONE: (216) 749-1555 - FAX: (216) 749-1755

**RED TAIL DEVELOPMENT NO. 6
SUBDIVISION PLAT**

HORIZ. SCALE	1" = 150'
VERT. SCALE	1" = 150'
DESIGNED	MLW
DRAWN	MLW
CHECKED	
DATE	12/26/00
DRAWING NAME	375e1-pla



TAX MAP DEPT. COPY # 01-00342