

HIGHLAND PARK DRIVE
PV 51 PP 32-34

708608



- LEGEND**
- 5/8" CAPPED REBAR SET
 - ⊙ IRON PIN FOUND
 - ⊞ MONUMENT BOX FOUND

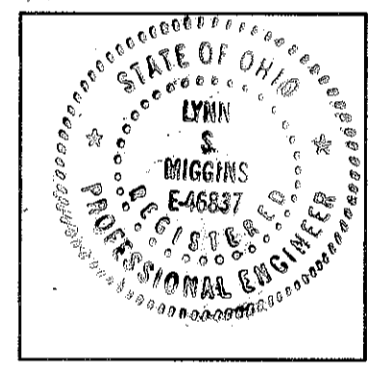
TOTAL AREA PHASE 8
1.6153 AC.

CURVE DATA						
CURVE	RADIUS	LENGTH	TANGENT	CHORD	BEARING	DELTA
C1	25.00'	39.27'	25.00'	35.36'	N48°54'17"E	90°00'00"
C2	89.00'	97.60'	54.36'	92.78'	S35°19'14"W	62°49'55"
C3	24.09'	28.52'	16.20'	26.88'	N52°10'47"W	67°49'53"
C4	111.00'	41.42'	20.95'	41.18'	S56°02'47"W	21°22'49"
C5	289.00'	92.98'	46.90'	92.58'	N57°31'10"E	18°26'05"
C6	289.00'	62.80'	31.52'	62.67'	N29°00'29"E	12°26'59"
C7	111.00'	61.91'	31.78'	61.11'	S38°45'42"W	31°57'26"
C8	89.00'	106.91'	60.97'	100.60'	S57°11'42"W	68°49'27"
C9	311.00'	48.48'	24.29'	48.43'	N35°46'40"E	8°55'51"
C10	311.00'	89.98'	45.31'	89.67'	N58°26'52"E	16°34'40"

CONTINUED ON SHEET 2

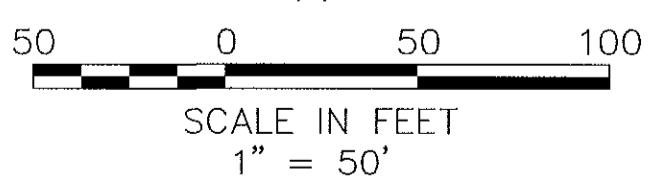
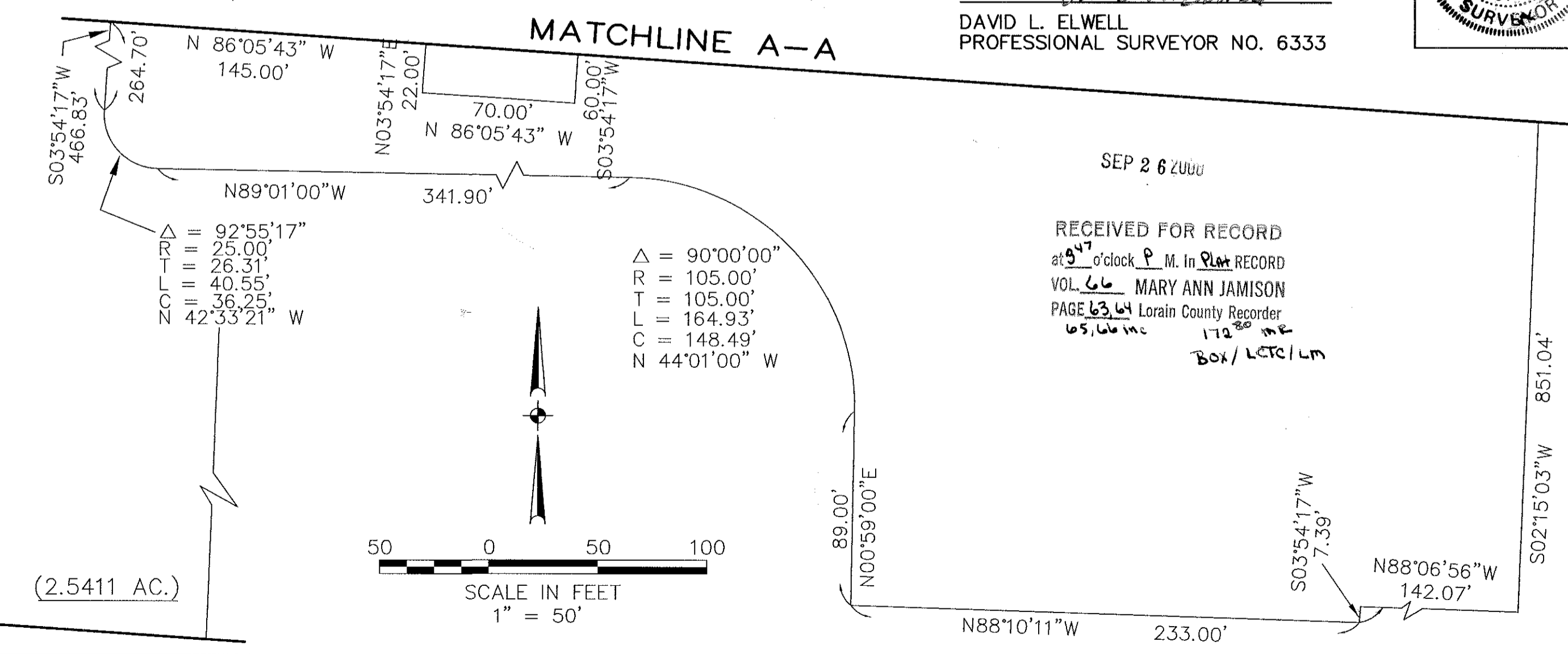
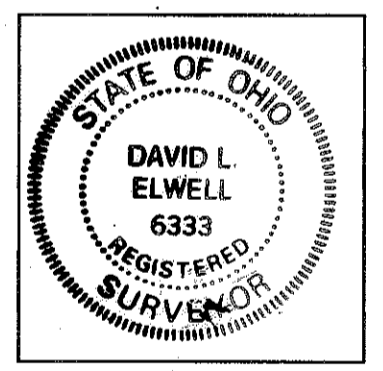
TRANSFERRED
IN COMPLIANCE WITH SEC. 310-202
OHIO REV. CODE
SEP 26 2000
MARK R. STEWART
LORAIN COUNTY AUDITOR

Lynn S. Miggins
LYNN S. MIGGINS
PROFESSIONAL ENGINEER NO. 46837



CERTIFICATION
THIS IS TO CERTIFY THAT THE ATTACHED DRAWINGS CORRECTLY REPRESENT THE BUILDINGS AS CONSTRUCTED AND THAT THERE ARE NO ENCROACHMENTS ON ADJUTING PROPERTIES, EXCEPT AS SHOWN.

David L. Elwell
DAVID L. ELWELL
PROFESSIONAL SURVEYOR NO. 6333



REVISIONS	DATE	DESCRIPTION	BY

KS ASSOCIATES, INC.
260 Burns Road, Suite 100
P.O. Box 569
Elyria, Ohio 44036
Phone (440) 365-4730
Fax (440) 365-4790
mailroom@ksassoc.com
www.ksassoc.com

STONEHEDGE CONDOMINIUMS
PHASE NO. 8
PART OF ORIGINAL CARLISLE TOWNSHIP SECTION NO. 5
CITY OF ELYRIA COUNTY OF LORAIN
STATE OF OHIO

SHEET
1 OF
4
JOB NO.
92424-CP8

SHEET INDEX

NO.	DESCRIPTION

SURVEY MAP & MISC.
FLOOR & FOUNDATION PLANS
ELEVATION VIEWS

708608

708608

CURVE DATA

A Δ = 38°07'27" R = 25.00' T = 8.64' L = 16.63' C = 16.33' CB = S25°28'22"E	F Δ = 14°39'14" R = 200.00' T = 25.72' L = 51.15' C = 51.01' CB = N16°05'46"E	K Δ = 97°04'40" R = 44.00' T = 49.80' L = 74.55' C = 65.95' CB = S44°38'03"E	P Δ = 32°18'52" R = 66.00' T = 19.12' L = 37.22' C = 36.73' CB = N77°00'57"W	U Δ = 29°37'44" R = 66.00' T = 17.46' L = 34.13' C = 33.75' CB = N46°02'39"W
B Δ = 80°47'16" R = 130.00' T = 110.61' L = 183.30' C = 168.49' CB = S42°38'06"W	G Δ = 26°29'29" R = 55.00' T = 12.95' L = 25.43' C = 25.20' CB = N76°45'16"W	L Δ = 88°45'25" R = 66.00' T = 64.58' L = 102.24' C = 92.32' CB = N48°47'41"W	Q Δ = 26°48'49" R = 66.00' T = 15.73' L = 30.89' C = 30.61' CB = N17°49'23"W	V Δ = 90°00'00" R = 25.00' T = 25.00' L = 39.27' C = 35.36' CB = S48°54'17"W
C Δ = 24°32'58" R = 190.00' T = 41.34' L = 81.41' C = 80.79' CB = N14°30'57"E	H Δ = 8°47'02" R = 111.00' T = 8.53' L = 17.02' C = 17.00' CB = S82°26'06"W	M Δ = 08°19'15" R = 66.00' T = 4.80' L = 9.59' C = 9.58' CB = N00°15'21"W	R Δ = 22°39'54" R = 190.00' T = 38.08' L = 75.16' C = 74.67' CB = N38°07'23"E	
D Δ = 40°05'31" R = 25.00' T = 9.12' L = 17.49' C = 17.14' CB = N13°39'13"E	I Δ = 0°51'42" R = 589.00' T = 4.43' L = 8.86' C = 8.86' CB = N78°28'26"E	N Δ = 20°15'21" R = 190.00' T = 33.94' L = 67.17' C = 66.82' CB = N72°54'03"E	S Δ = 13°19'02" R = 190.00' T = 22.18' L = 44.16' C = 44.06' CB = N56°06'51"E	
E Δ = 53°07'38" R = 25.00' T = 12.50' L = 23.18' C = 22.36' CB = N60°15'48"E	J Δ = 2°48'19" R = 589.00' T = 14.42' L = 28.84' C = 28.84' CB = N85°25'27"E	O Δ = 56°14'17" R = 190.00' T = 101.53' L = 186.49' C = 179.10' CB = N54°54'35"E	T Δ = 13°46'24" R = 190.00' T = 22.95' L = 45.67' C = 45.56' CB = N69°39'34"E	

OWNERSHIP PERCENTAGES

UNIT NO.	SQ. FT.	ELEV. F.F.	% OWNERSHIP
1	1661.92	756.59	2.5059
2	1602.38	756.59	2.4162
3	1191.64	755.86	1.7968
4	1214.22	755.86	1.8309
5	1602.38	757.42	2.4162
6	1661.92	757.42	2.5059
7	1658.47	756.00	2.5008
8	1661.92	756.00	2.5059
9	1196.28	756.42	1.8038
10	1213.70	756.42	1.8301
11	1196.28	756.76	1.8038
12	1213.70	756.76	1.8301
13	1599.80	754.87	2.4123
14	1393.43	756.44	2.1011
15	1713.47	756.37	2.5837
16	1733.47	756.37	2.6138
17	1658.47	757.40	2.5008
18	1661.92	757.41	2.5059
19	1196.28	755.58	1.8038
20	1393.43	757.01	2.1011
21	1393.43	757.56	2.1011
22	1393.43	754.55	2.1011
23	1196.28	754.53	1.8038
24	1213.70	754.54	1.8301
25	1658.47	758.13	2.5008
26	1661.92	758.13	2.5059
27	1393.43	755.19	2.1011
28	1393.43	754.43	2.1011
29	1393.43	757.07	2.1011
30	1196.28	756.16	1.8038
31	1196.28	755.32	1.8038
32	1393.43	756.45	2.1011
33	1393.43	756.64	2.1011
34	1213.70	753.83	1.8301
35	1393.43	753.61	2.1011
36	1393.43	754.43	2.1011
37	1717.06	754.06	2.5891
38	1717.06	754.20	2.5891
39	1717.06	755.50	2.5891
40	1661.92	756.29	2.5059
41	1658.47	756.29	2.5008
42	1717.06	755.93	2.5891
43	1393.43	754.62	2.1011
44	1717.06	754.78	2.5891
45	1717.06	755.45	2.5891
TOTAL	66,318.76		100.00%

DATE: 8-21-00 DWG. PATH: R:\92424CP8\LDOT\DWG\8-TABLO1

REVISIONS	DATE	DESCRIPTION	BY

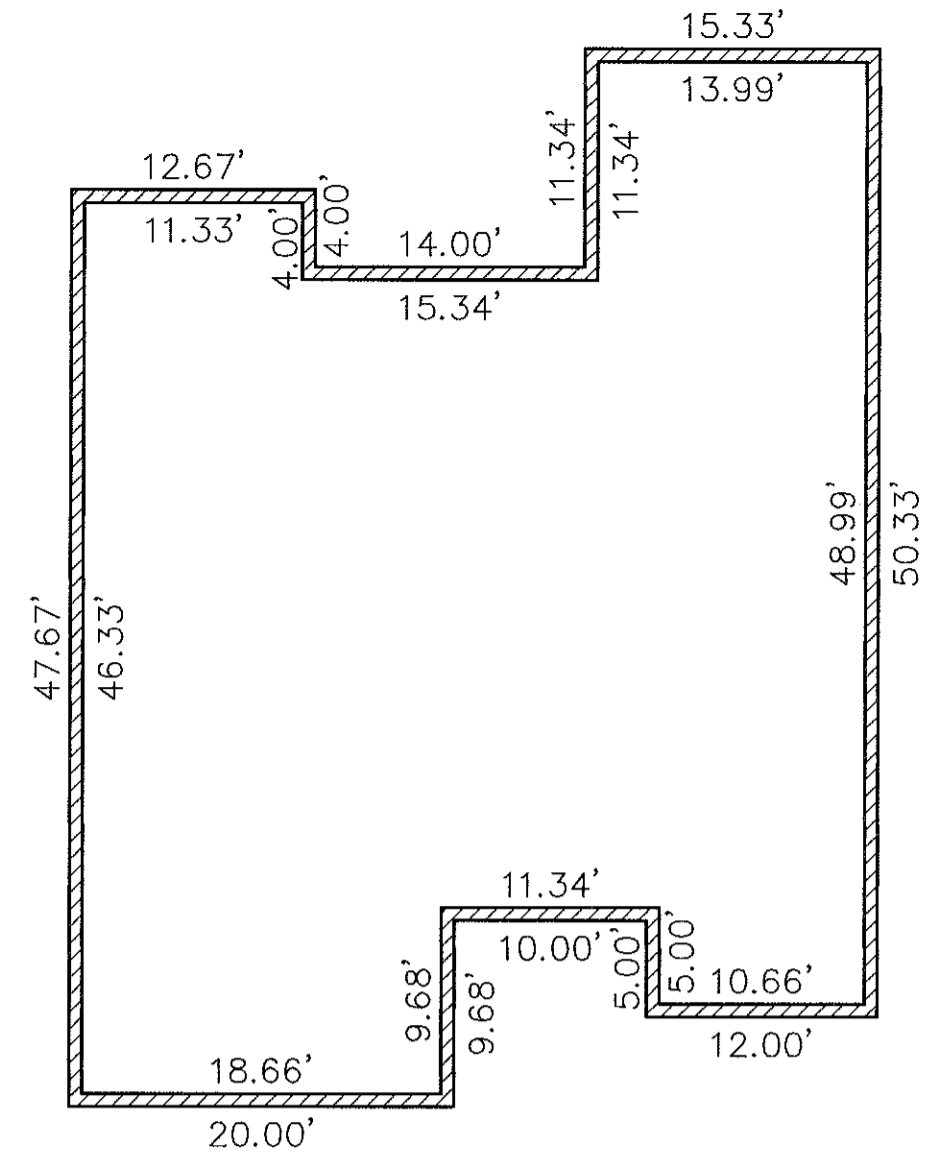


STONEHEDGE CONDOMINIUMS
PHASE NO. 8
 PART OF ORIGINAL TOWNSHIP SECTION NO. 5
 CITY OF ELYRIA COUNTY OF LORAIN
 STATE OF OHIO

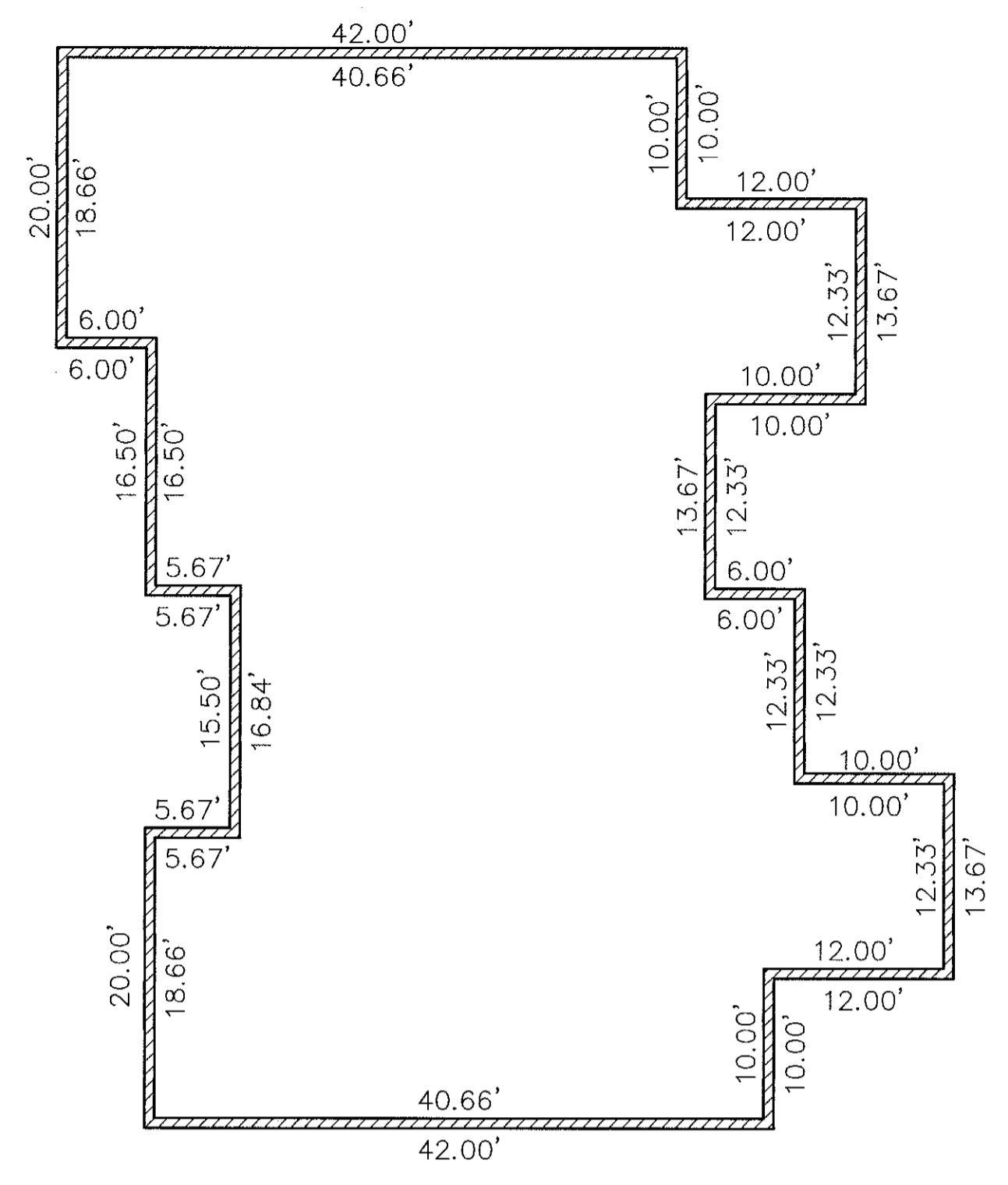
SHEET
 2 OF
 4
 JOB NO.
 92424-CP8

TAX MAP DEPT. COPY # 00310

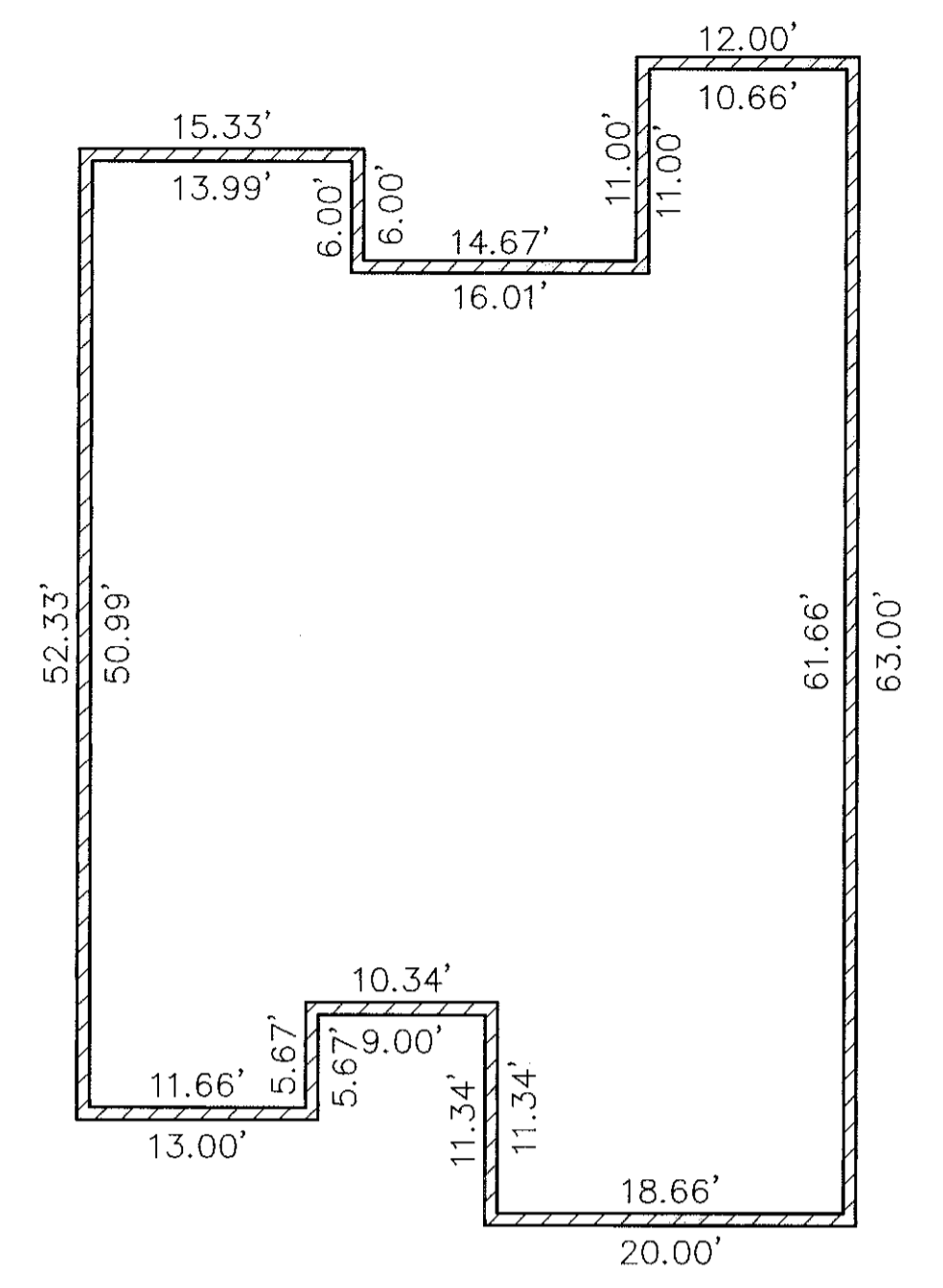
66/64



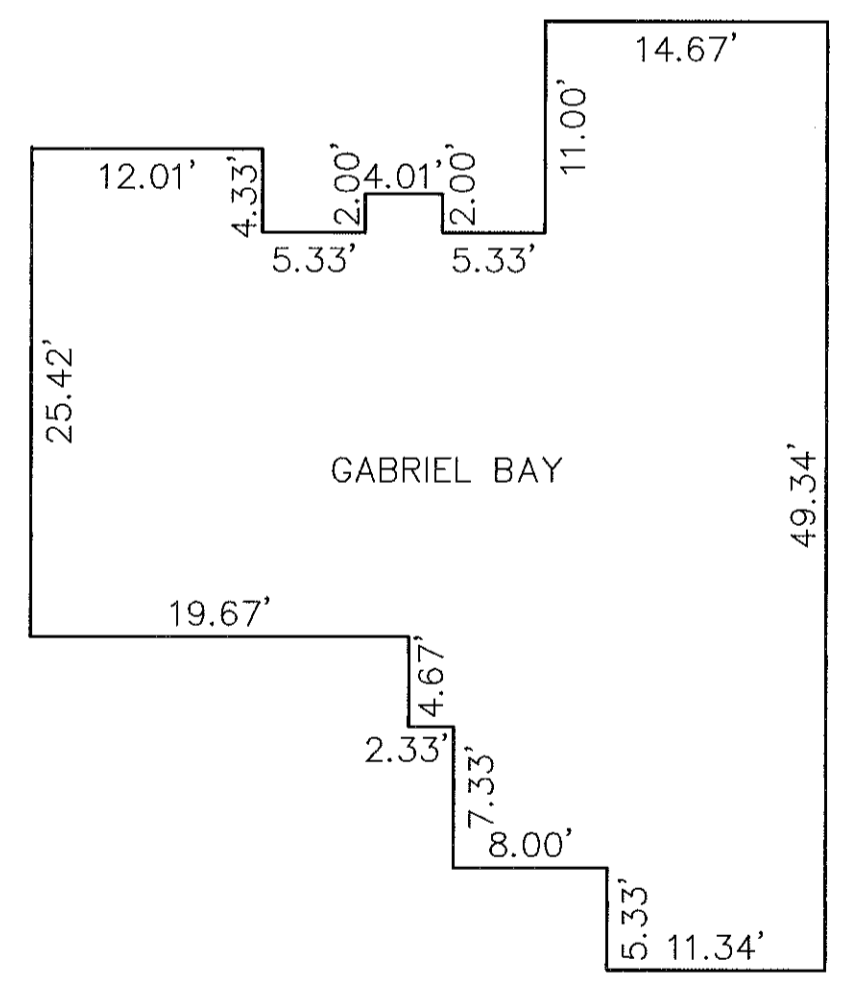
FOUNDATION PLAN
REVERSE FOR UNIT 43



FOUNDATION PLAN
REVERSE FOR UNITS 40 & 41

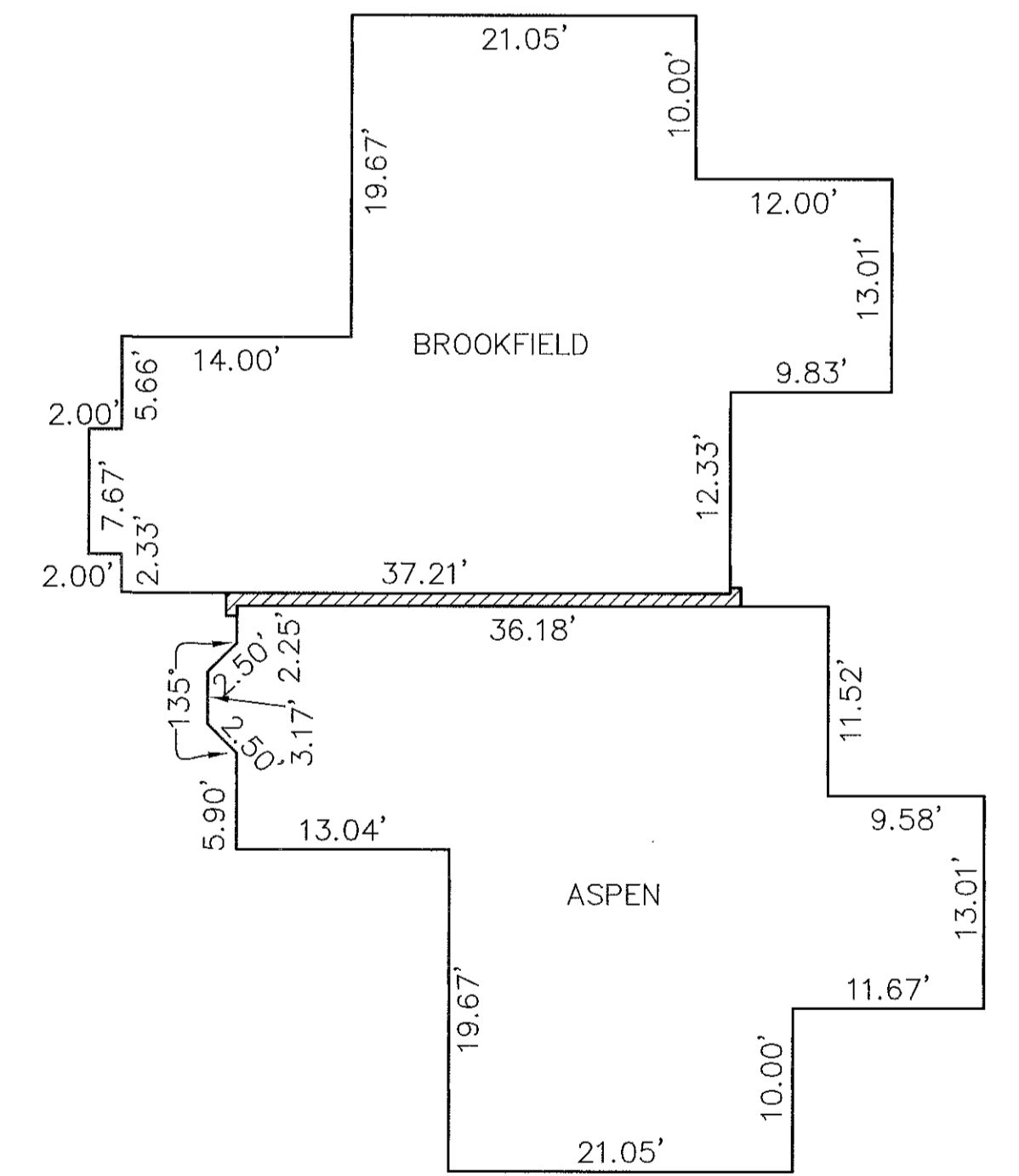


FOUNDATION PLAN



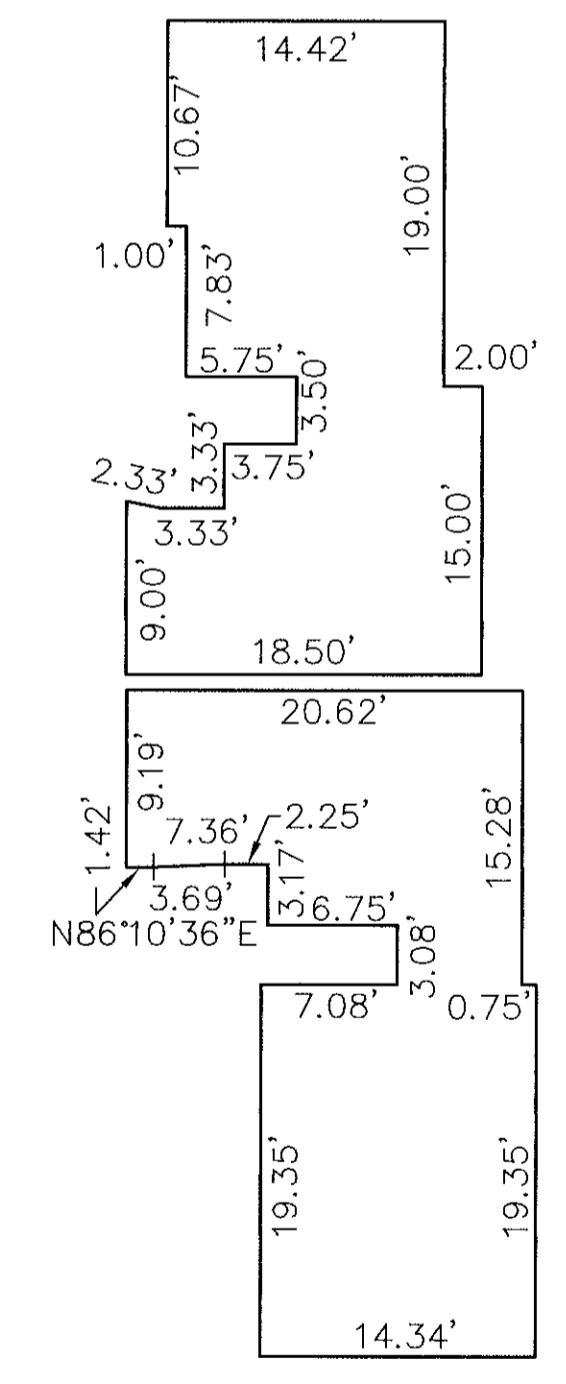
FLOOR PLAN
(INTERIOR DIMENSIONS)
REVERSE FOR UNIT 43

NOTE: TYPICAL FOR PROJECT UNIT: GABRIEL BAY

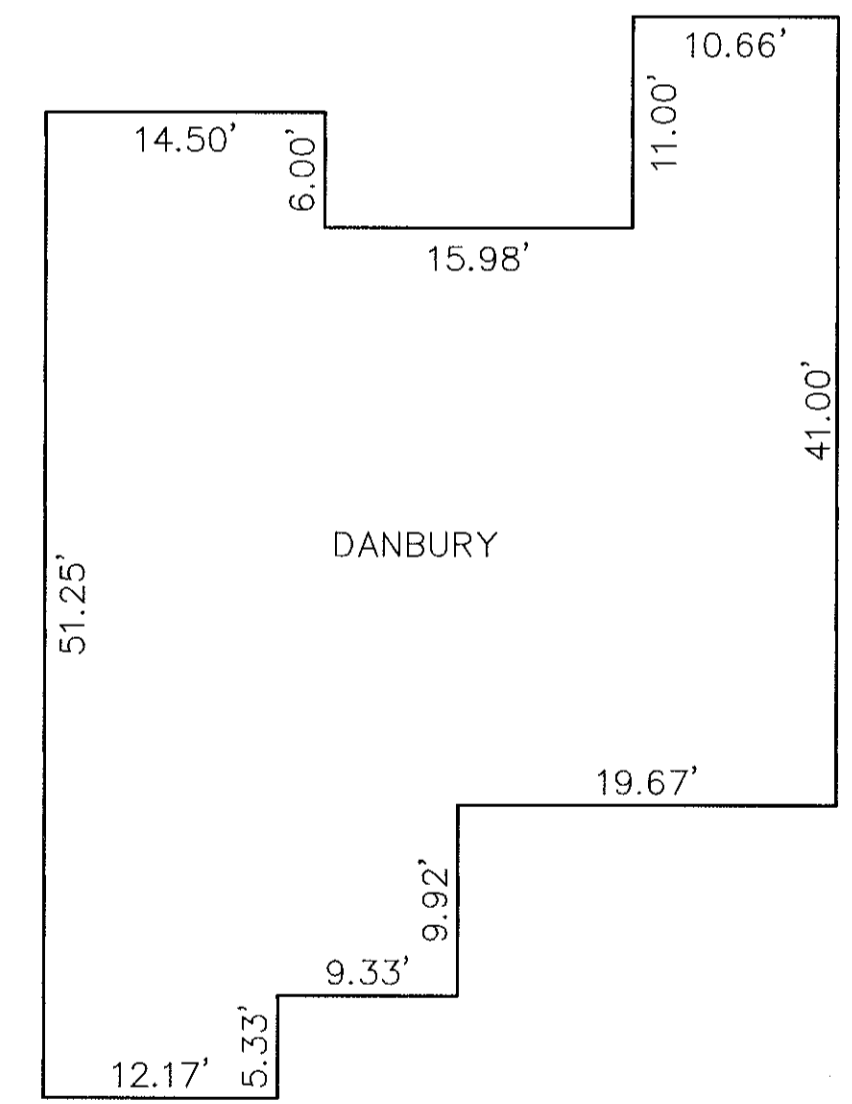


FIRST FLOOR PLAN
(INTERIOR DIMENSIONS)
REVERSE FOR UNITS 40 & 41

NOTE: TYPICAL FOR PROJECT UNITS: ASPEN & BROOKFIELD
REVERSE FOR SUBJECT UNITS 40(ASPEN) & 41(BROOKFIELD)

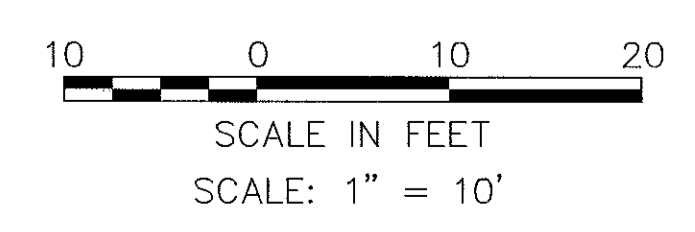


SECOND FLOOR PLAN
(INTERIOR DIMENSIONS)
REVERSE FOR UNITS 40 & 41



FLOOR PLAN
(INTERIOR DIMENSIONS)

NOTE: TYPICAL FOR PROJECT UNIT: DANBURY II
AS SHOWN - UNITS 44, 39, 42
REVERSED - UNITS 45, 38



REVISIONS	DATE	DESCRIPTION	BY

KS ASSOCIATES, INC.
260 Burns Road, Suite 100
P.O. Box 569
Elyria, Ohio 44036
Phone (440) 365-4730
Fax (440) 365-4790
mailroom@ksassoc.com
www.ksassoc.com

**STONEHEDGE CONDOMINIUMS
PHASE NO. 8**
PART OF ORIGINAL TOWNSHIP SECTION NO. 5
CITY OF ELYRIA COUNTY OF LORAIN
STATE OF OHIO

SHEET **3** OF **4**
JOB NO. **92424-CP8**

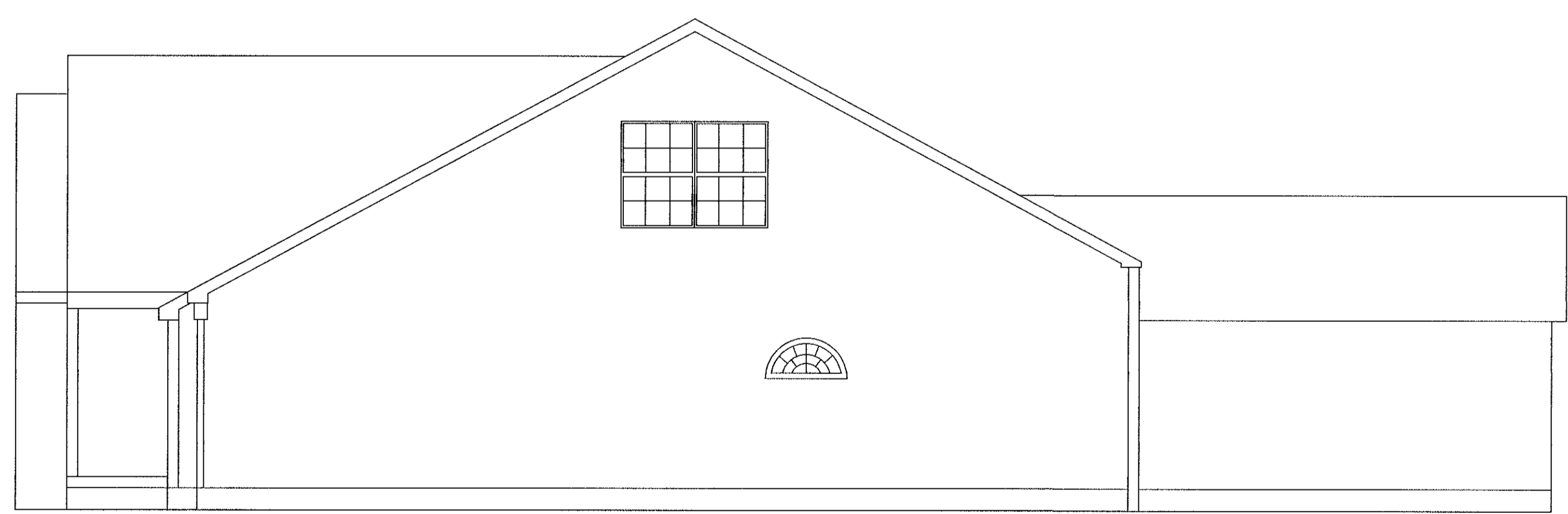


FRONT ELEVATION

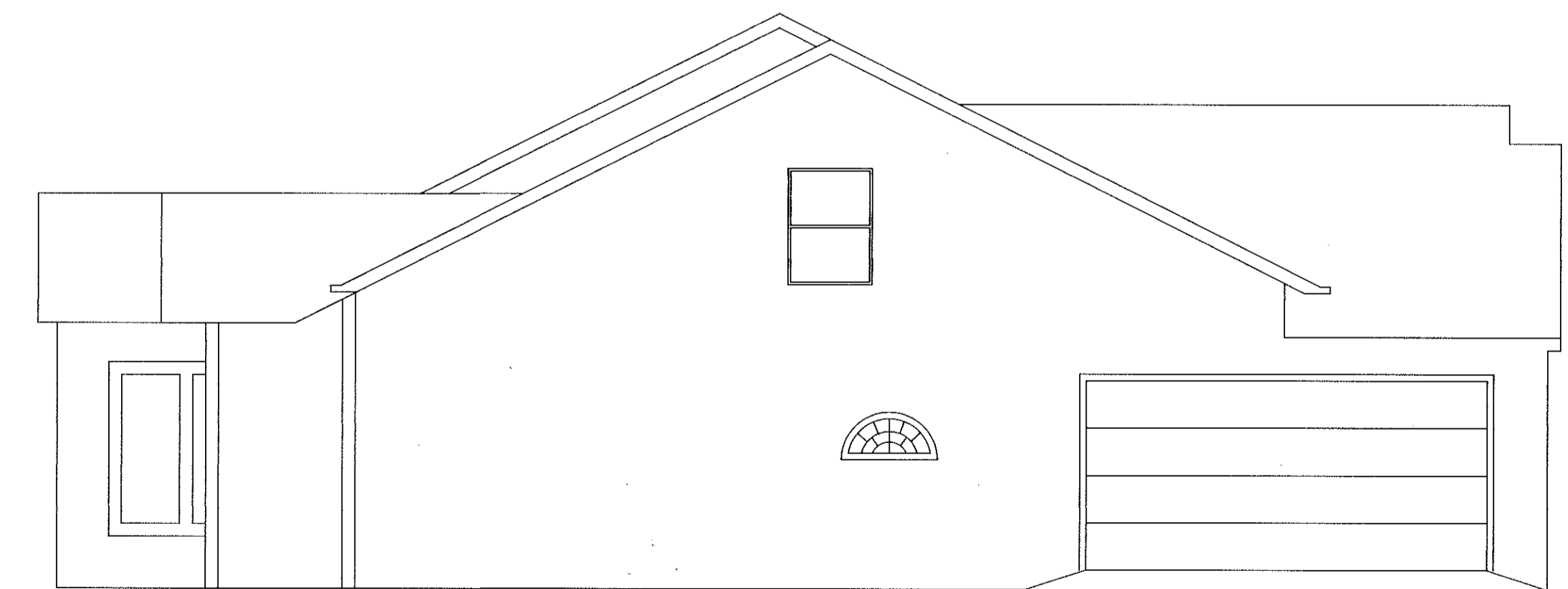


REAR ELEVATION

NOTE: ELEVATION VIEWS SHOWN ARE TYPICAL FOR OVERALL SITE. INDIVIDUAL VARIATIONS SUBJECT TO GARAGE ORIENTATION, UNIT REVERSAL, SINGLE UNIT CONSTRUCTION, ETC. BUILDINGS ARE UNDER CONSTRUCTION.



LEFT SIDE ELEVATION



RIGHT SIDE ELEVATION

REVISIONS	DATE	DESCRIPTION	BY

KS ASSOCIATES, INC.
 260 Burns Road, Suite 100
 P.O. Box 569
 Glyria, Ohio 44036
 Phone (440) 365-4730
 Fax (440) 365-4790
 mailroom@ksassoc.com
 www.ksassoc.com

**STONEHEDGE CONDOMINIUMS
 PHASE NO. 8**

ELEVATION VIEWS

SHEET
4 OF
4

JOB NO.
92424-CP8