



NORTH RIDGEVILLE BOARD OF EDUCATION D.V. 735 P. 185

NORTH RIDGEVILLE BOARD OF EDUCATION D.V. 824 P. 174

CURVE TABLE

Table with columns: CURVE, DELTA, RADIUS, ARC, TAN., CHORD. Lists curve data for C1 through C48.

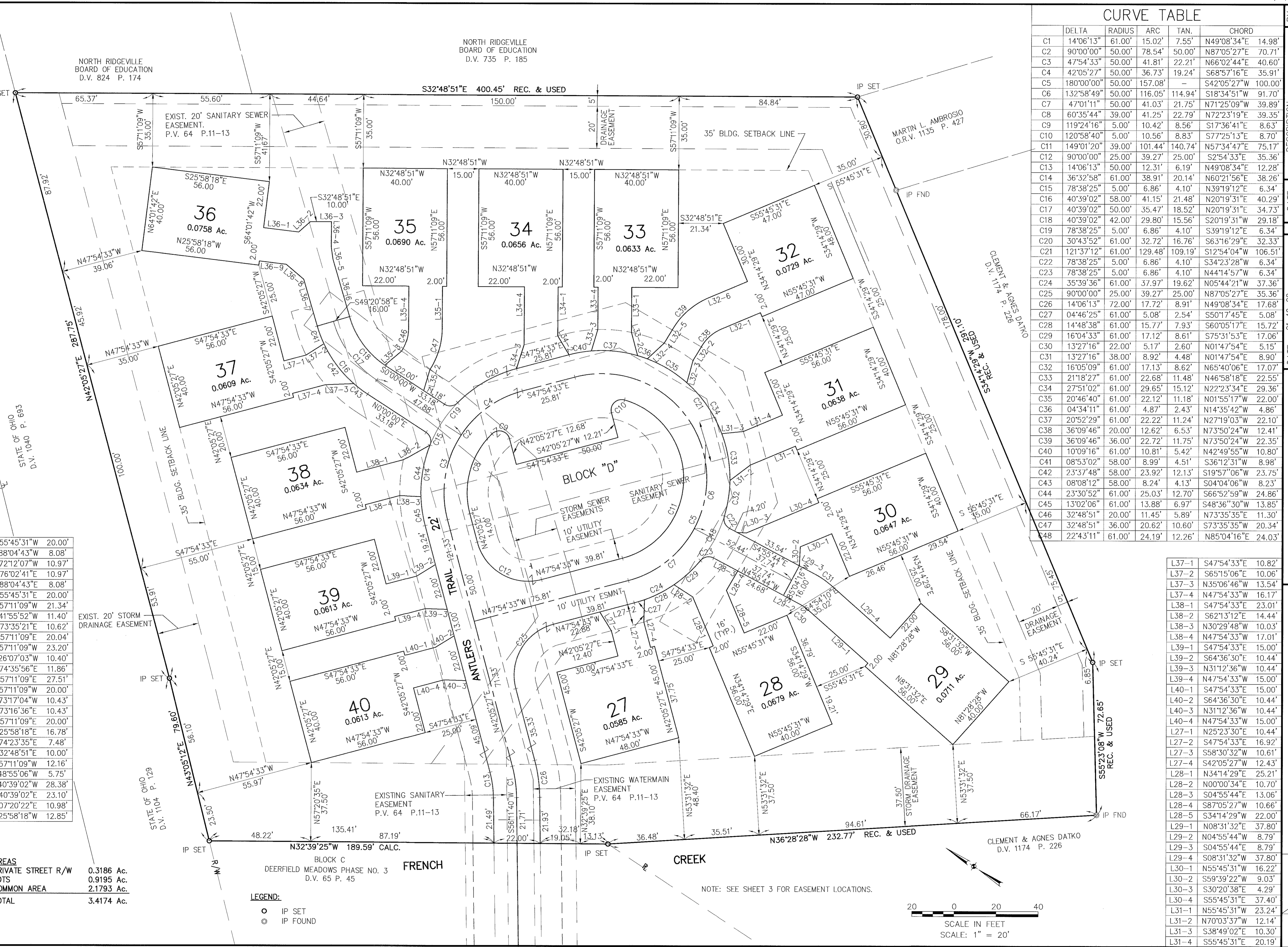
Table with columns: DATE, DESCRIPTION, REVISIONS. Includes revision history from 05-12-00 to 01-19-00.

Table with columns: DRAWN BY, CH'D BY, DWG. NAME, F.B. Includes project details like 'DEERFIELD MEADOWS PHASE NO. 4'.

Logo for HS ASSOCIATES with contact information: 424 Middle Avenue, P.O. Box 509, Ellettsville, Ohio 44036.

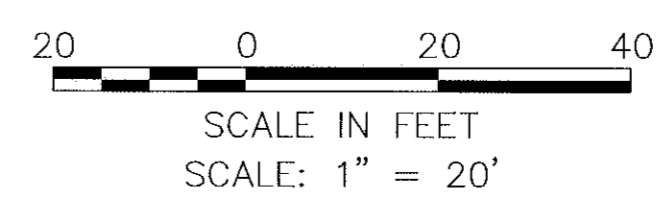
RECORD PLAT DEERFIELD MEADOWS PHASE NO. 4. City of North Ridgeville, Lorain County, Ohio. SHEET 2 OF 3. JOB NO. 99169.

Table with columns: AREA, PRIVATE STREET R/W, COMMON AREA, TOTAL. Lists area values: 0.3186 Ac., 0.9195 Ac., 2.1793 Ac., 3.4174 Ac.



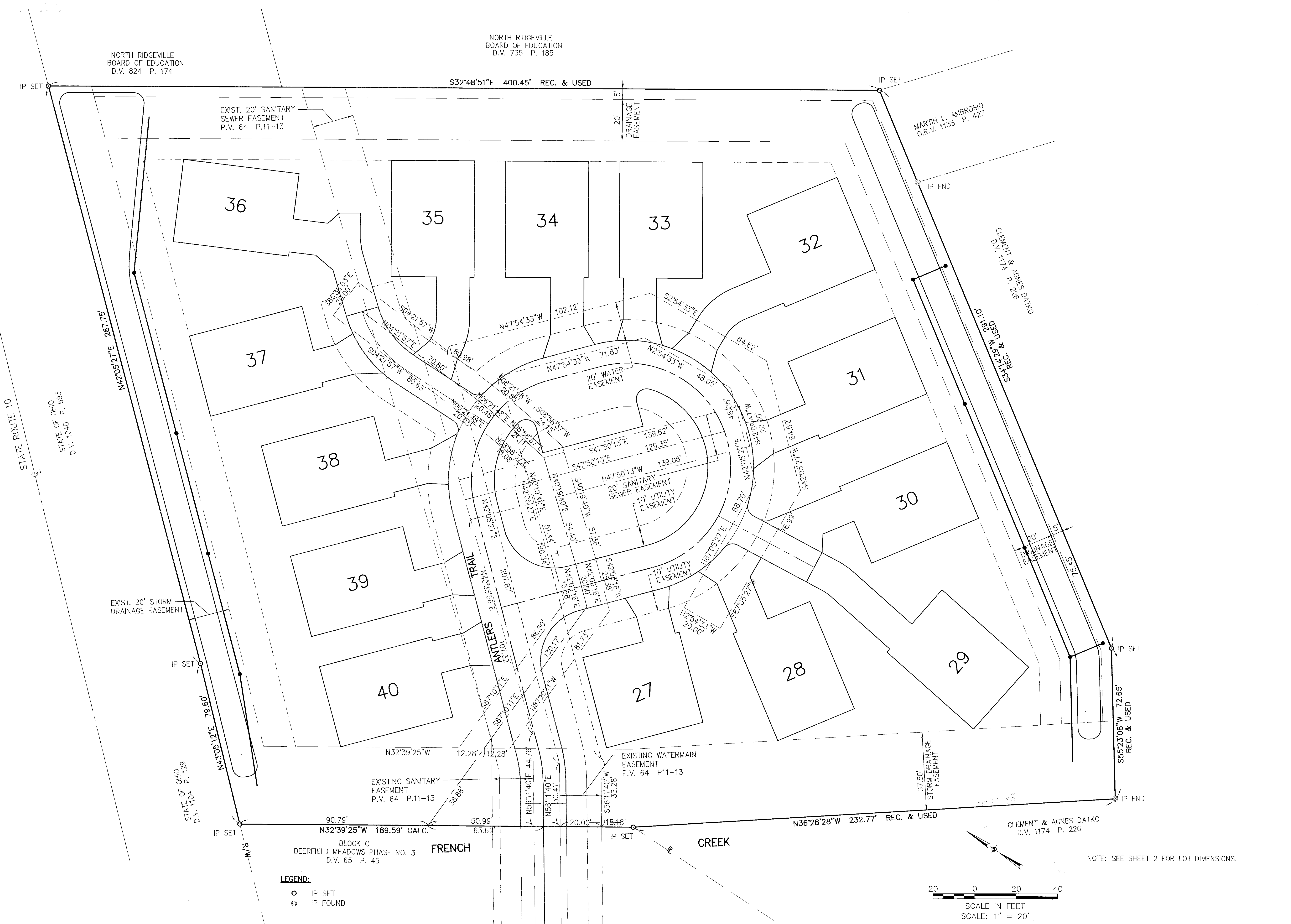
LEGEND: IP SET, IP FOUND

NOTE: SEE SHEET 3 FOR EASEMENT LOCATIONS.



688725

688725



NORTH RIDGEVILLE  
BOARD OF EDUCATION  
D.V. 735 P. 185

NORTH RIDGEVILLE  
BOARD OF EDUCATION  
D.V. 824 P. 174

MARTIN L. AMBROSIO  
O.R.V. 1135 P. 427

CLEMENT & AGNES DATKO  
D.V. 1174 P. 226

CLEMENT & AGNES DATKO  
D.V. 1174 P. 226

**LEGEND:**  
○ IP SET  
● IP FOUND

SCALE IN FEET  
SCALE: 1" = 20'

NOTE: SEE SHEET 2 FOR LOT DIMENSIONS.

BLOCK C  
DEERFIELD MEADOWS PHASE NO. 3  
D.V. 65 P. 45

DATE	DESCRIPTION	BY
05-12-00	REVISED PER COMMENTS	
02-07-00	ADDED SANITARY SEWER EASEMENT	
01-19-00	ORIGINAL ISSUE	

DATE: 01-19-00  
DRAWN BY: JRK  
CH'D BY: JRK  
DWG. NAME: 4-PLAT02.DWG  
PATH: 99169\DDT\CONTROL\DWG  
F.B.

**KS ASSOCIATES**  
484 Middle Avenue  
P.O. Box 569  
Elyria, Ohio 44036  
Phone (440) 392-6317  
Fax (440) 984-0623  
mailto:info@ksassoc.com  
www.ksassoc.com

**RECORD PLAT  
DEERFIELD MEADOWS PHASE NO. 4**  
City of North Ridgeville, Lorain County, Ohio

SHEET 3 OF 3  
JOB NO. 99169