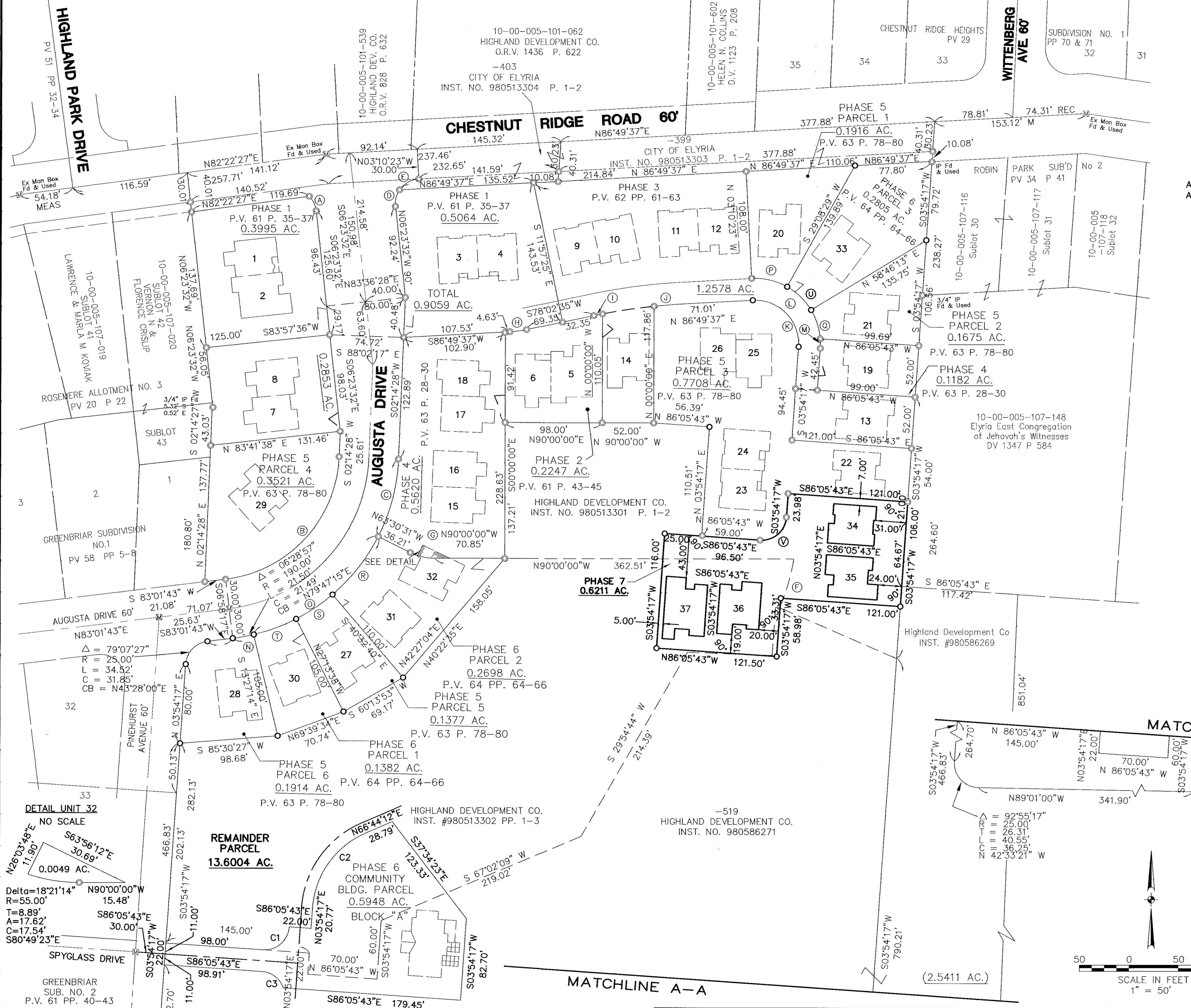


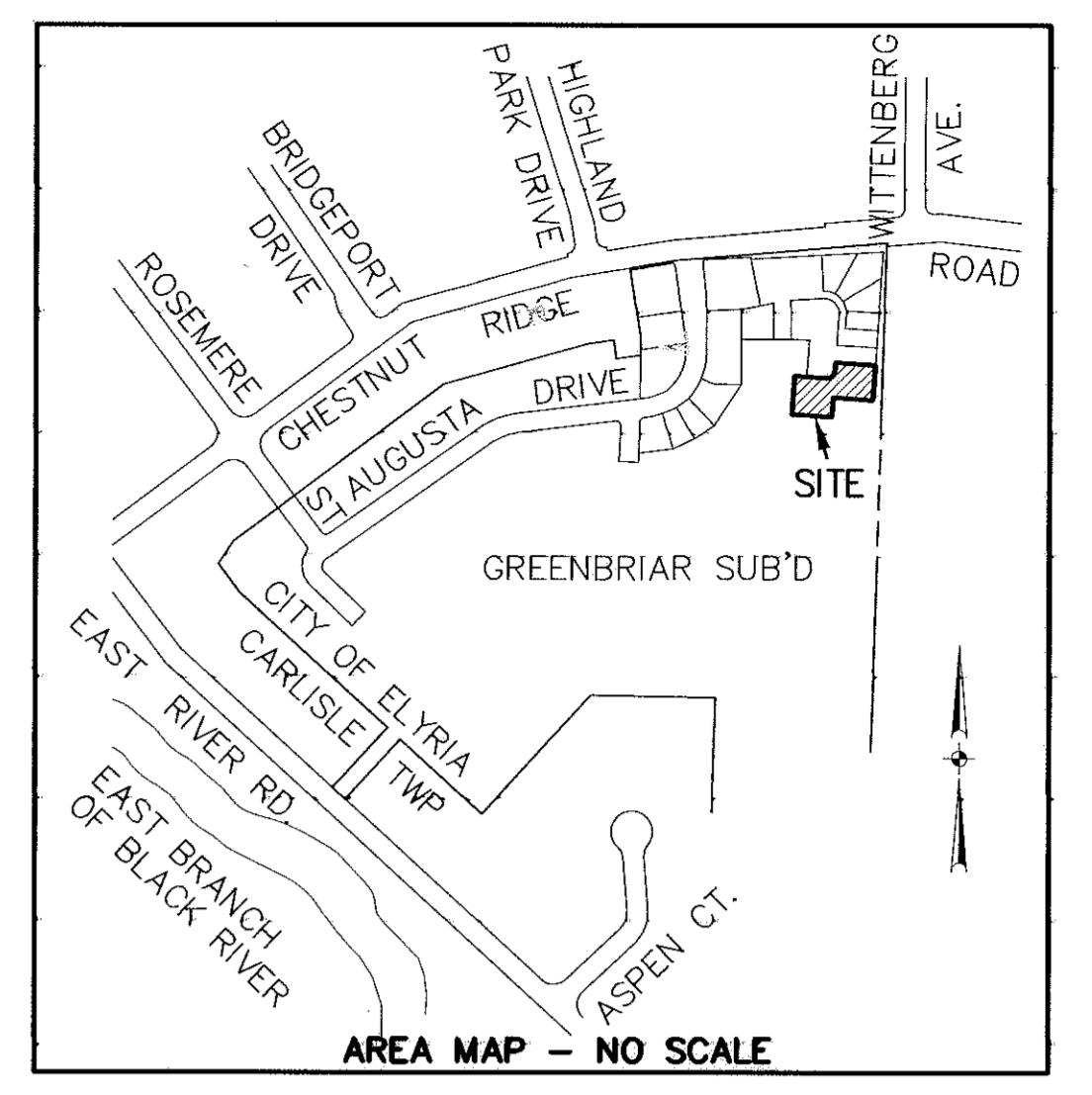
672835

672835



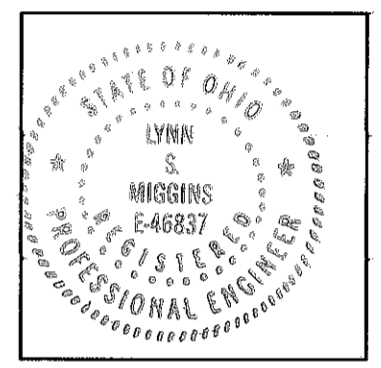
- LEGEND**
- 5/8" CAPPED REBAR SET
 - IRON PIN FOUND
 - ⊠ MONUMENT BOX FOUND

AREA IN UNIT PARCELS 0.6885 AC.
 AREA IN BLOCK "A" 0.5948 AC.
**TOTAL AREA PHASE 6
 1.2833 AC.**

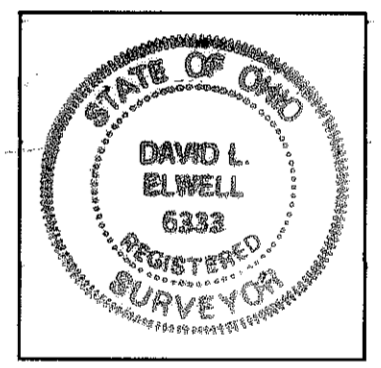


CERTIFICATION
 THIS IS TO CERTIFY THAT THE ATTACHED DRAWINGS CORRECTLY REPRESENT THE BUILDINGS AS CONSTRUCTED AND THAT THERE ARE NO ENCROACHMENTS ON ABUTTING PROPERTIES, EXCEPT AS SHOWN.

Lynn S. Miggins
 LYNN S. MIGGINS
 PROFESSIONAL ENGINEER NO. 46837



David L. Elwell
 DAVID L. ELWELL
 PROFESSIONAL SURVEYOR NO. 6333

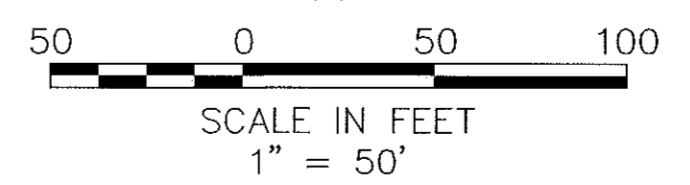


TRANSFERRED
 IN COMPLIANCE WITH SEC. 319.202
 OHIO REV. CODE
 MAR 9 2000

MARK R. STEWART
 LORAIN COUNTY AUDITOR

MAR 09 2000
 RECEIVED FOR RECORD
 3:47 P.M. in PLAT RECORD
 VOL. 65 MARY ANN JAMISON
 PAGE 20 Lorain County Recorder
 27
 23
 Box: LCTC
 LM

PLAT. 172.80
 Dec. 104.00
 276.80



DETAIL UNIT 32
 NO SCALE
 0.0049 AC.
 Delta=18°21'14" N90°00'00"W
 R=55.00' 15.48'
 T=8.89'
 A=17.62'
 C=17.54'
 S80°49'23"E

REMAINDER PARCEL
 13.6004 AC.

CURVE TABLE						
CURVE	LENGTH	RADIUS	CHORD	BEARING	TANGENT	DELTA
C1	39.27'	25.00'	35.36'	N48°54'17"E	25.00'	90°00'00"
C2	97.60'	89.00'	92.78'	S35°19'14"W	54.36'	62°49'55"
C3	28.52'	24.09'	26.88'	N52°10'47"W	16.20'	67°49'53"

REVISIONS	DATE	DESCRIPTION	BY

KS ASSOCIATES
 424 Middle Avenue
 P.O. Box 569
 Elyria, Ohio 44036
 Phone (440) 322-6317
 Fax (440) 284-0623
 mailroom@ksassoc.com
 www.ksassoc.com

STONEHEDGE CONDOMINIUMS
PHASE NO. 7
 PART OF ORIGINAL TOWNSHIP SECTION NO. 5
 CITY OF ELYRIA COUNTY OF LORAIN
 STATE OF OHIO

SHEET
1 OF
4
 JOB NO.
92424-CP7

DATE: 2-10-00.DWG. PATH: R:\92424\CP7\LD01\DWG\7-SURV01

CURVE DATA

A Δ = 38'07"27" R = 25.00' T = 8.64' L = 16.63' C = 16.33' CB = S25'28'22"E	F Δ = 14'39"14" R = 200.00' T = 25.72' L = 51.15' C = 51.01' CB = N16'05'46"E	K Δ = 97'04'40" R = 44.00' T = 49.80' L = 74.55' C = 65.95' CB = S44'38'03"E	P Δ = 32'18"52" R = 66.00' T = 19.12' L = 37.22' C = 36.73' CB = N77'00'57"W	U Δ = 29'37"44" R = 66.00' T = 17.46' L = 34.13' C = 33.75' CB = N46'02'39"W
B Δ = 80'47"16" R = 130.00' T = 110.61' L = 183.30' C = 168.49' CB = S42'38'06"W	G Δ = 26'29"29" R = 55.00' T = 12.95' L = 25.43' C = 25.20' CB = N76'45'16"W	L Δ = 88'45"25" R = 66.00' T = 64.58' L = 102.24' C = 92.32' CB = N48'47'41"W	Q Δ = 26'48"49" R = 66.00' T = 15.73' L = 30.89' C = 30.61' CB = N17'49'23"W	V Δ = 90'00"00" R = 25.00' T = 25.00' L = 39.27' C = 35.36' CB = S48'54'17"W
C Δ = 24'32"58" R = 190.00' T = 41.34' L = 81.41' C = 80.79' CB = N14'30'57"E	H Δ = 8'47"02" R = 111.00' T = 8.53' L = 17.02' C = 17.00' CB = S82'26'06"W	M Δ = 08'19"15" R = 66.00' T = 4.80' L = 9.59' C = 9.58' CB = N00'15'21"W	R Δ = 22'39"54" R = 190.00' T = 38.08' L = 75.16' C = 74.67' CB = N38'07'23"E	
D Δ = 40'05"31" R = 25.00' T = 9.12' L = 17.49' C = 17.14' CB = N13'39'13"E	I Δ = 0'51"42" R = 589.00' T = 4.43' L = 8.86' C = 8.86' CB = N78'28'26"E	N Δ = 20'15"21" R = 190.00' T = 33.94' L = 67.17' C = 66.82' CB = N72'54'03"E	S Δ = 13'19"02" R = 190.00' T = 22.18' L = 44.16' C = 44.06' CB = N56'06'51"E	
E Δ = 53'07"38" R = 25.00' T = 12.50' L = 23.18' C = 22.36' CB = N60'15'48"E	J Δ = 2'48"19" R = 589.00' T = 14.42' L = 28.84' C = 28.84' CB = N85'25'27"E	O Δ = 56'14"17" R = 190.00' T = 101.53' L = 186.49' C = 179.10' CB = N54'54'35"E	T Δ = 13'46"24" R = 190.00' T = 22.95' L = 45.67' C = 45.56' CB = N69'39'34"E	

OWNERSHIP PERCENTAGES

UNIT NO.	SQ. FT.	ELEV. F.F.	% OWNERSHIP
1	1661.92	756.59	3.1345
2	1602.38	756.59	3.0222
3	1191.64	755.86	2.2475
4	1214.22	755.86	2.2901
5	1602.38	757.42	3.0222
6	1661.92	757.42	3.1345
7	1658.47	756.00	3.1280
8	1661.92	756.00	3.1345
9	1196.28	756.42	2.2563
10	1213.70	756.42	2.2892
11	1196.28	756.76	2.2563
12	1213.70	756.76	2.2892
13	1599.80	754.87	3.0174
14	1393.43	756.44	2.6281
15	1713.47	756.37	3.2319
16	1733.47	756.37	3.2695
17	1658.47	757.40	3.1280
18	1661.92	757.41	3.1345
19	1196.28	755.58	2.2563
20	1393.43	757.01	2.6281
21	1393.43	757.56	2.6281
22	1393.43	754.55	2.6281
23	1196.28	754.53	2.2563
24	1213.70	754.54	2.2892
25	1658.47	758.13	3.1280
26	1661.92	758.13	3.1345
27	1393.43	755.19	2.6281
28	1393.43	754.43	2.6281
29	1393.43	757.07	2.6281
30	1196.28	756.16	2.2563
31	1196.28	755.32	2.2563
32	1393.43	756.45	2.6281
33	1393.43	756.64	2.6281
34	1213.70	753.83	2.2892
35	1393.43	753.61	2.6281
36	1393.43	754.43	2.6281
37	1717.06	754.06	3.2385
TOTAL	53,019.64		100.00%

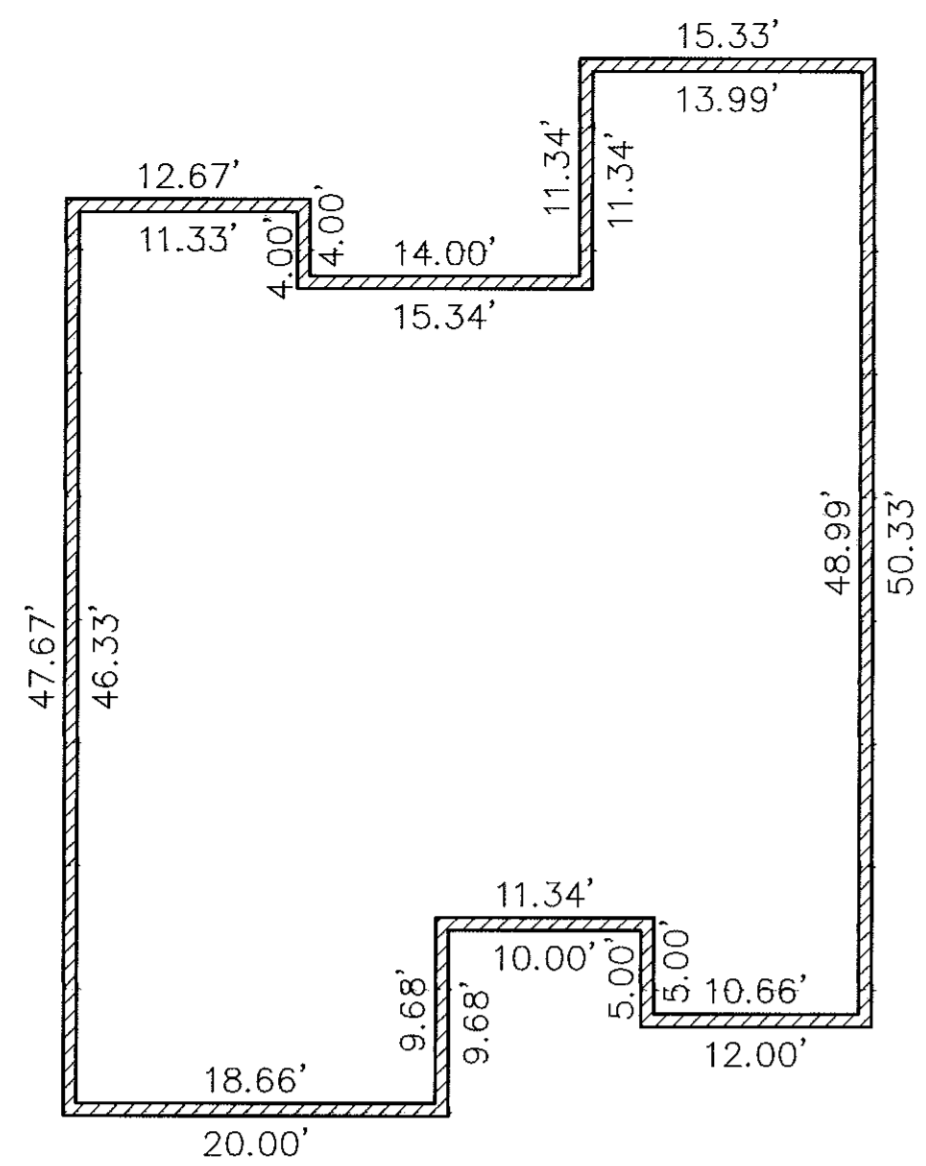
DATE: 2-10-00 DWG. PATH: R:\92424CP7\LDOT\DWG\7-TAB101

REVISIONS	DATE	DESCRIPTION	BY

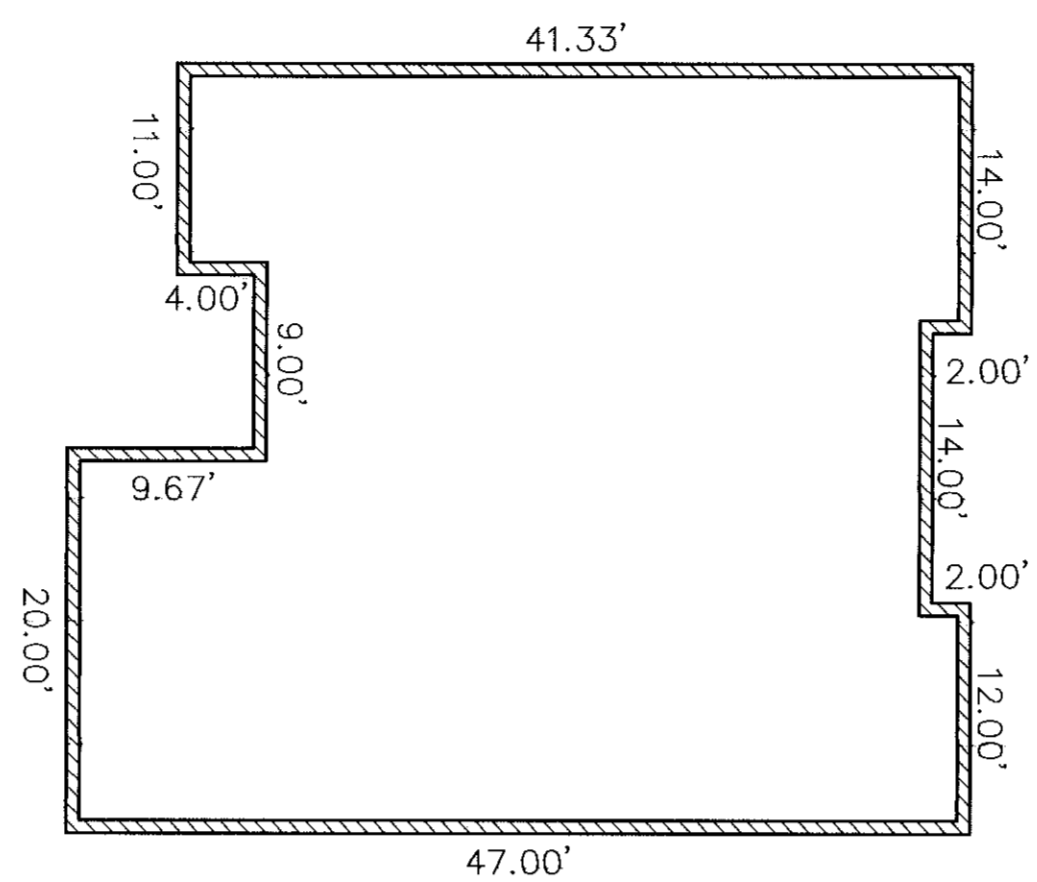


**STONEHEDGE CONDOMINIUMS
PHASE NO. 7**
PART OF ORIGINAL TOWNSHIP SECTION NO. 5
CITY OF ELYRIA COUNTY OF LORAIN
STATE OF OHIO

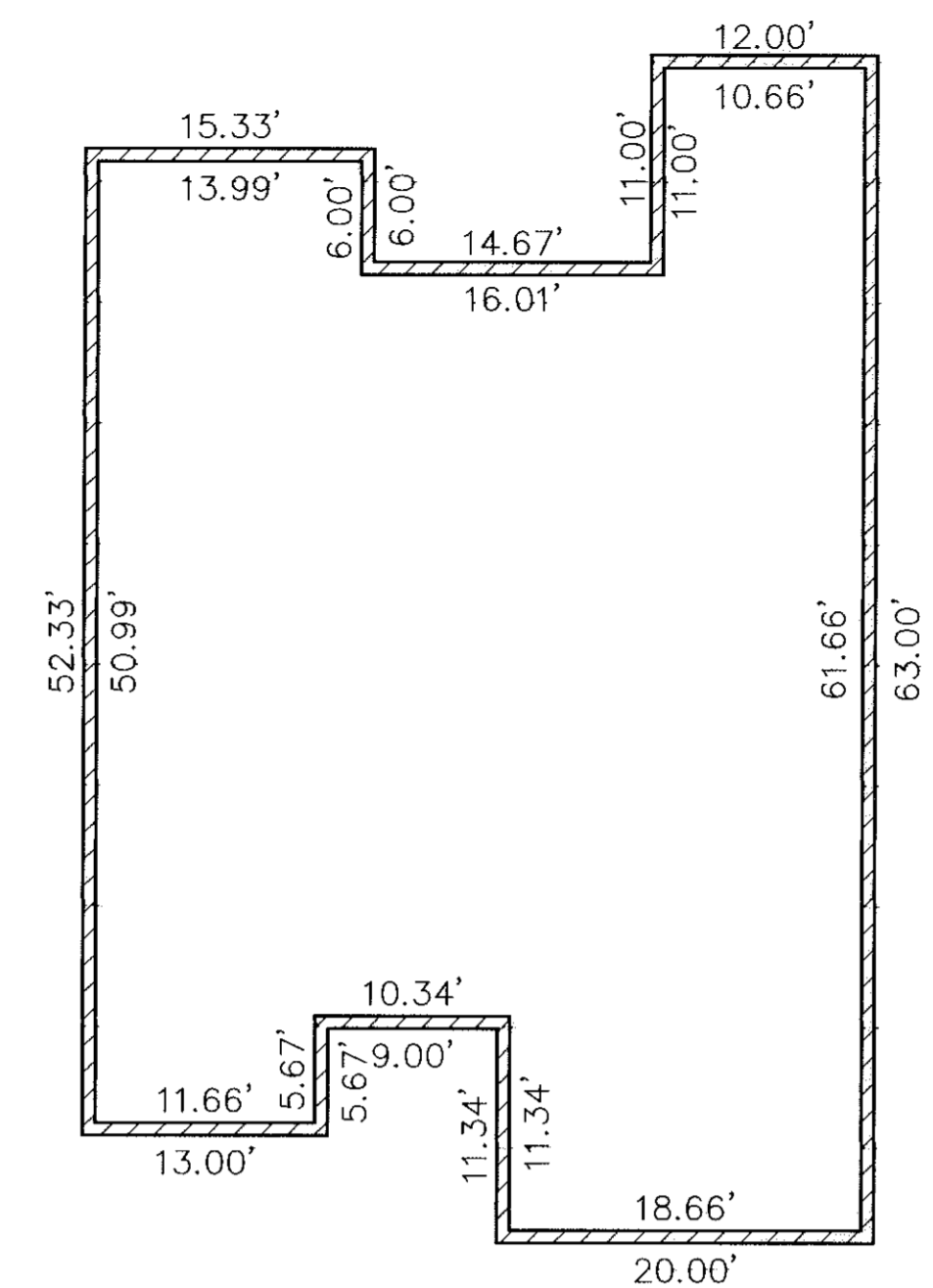
SHEET
2 OF
4
JOB NO.
92424-CP7



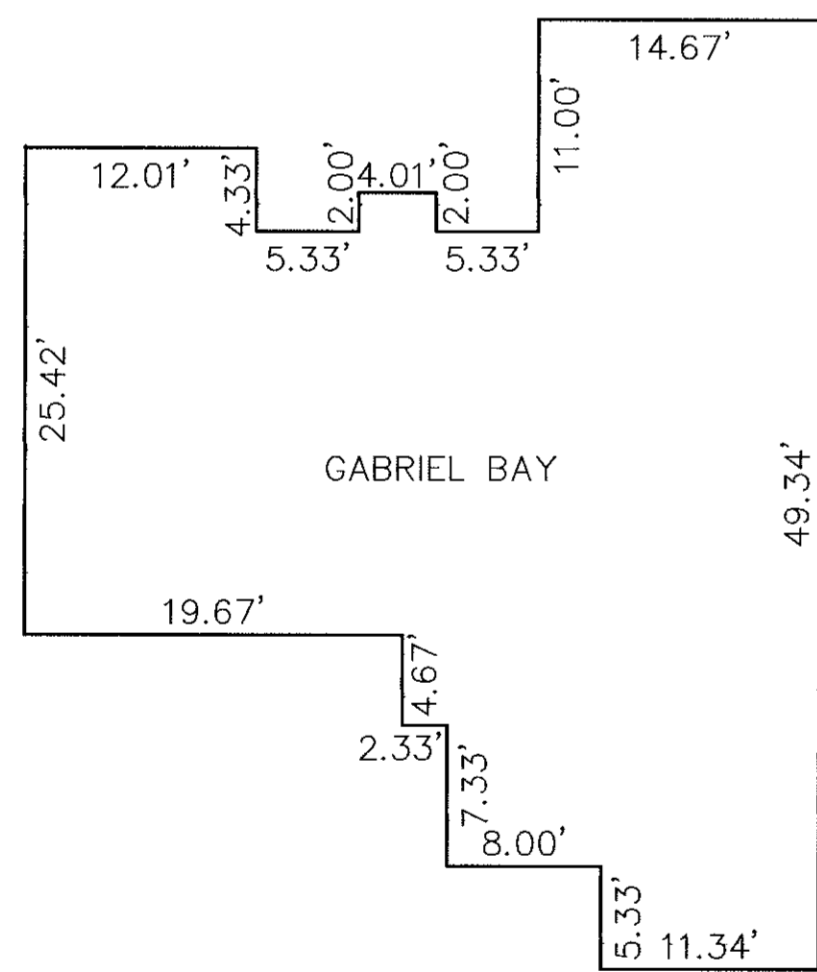
FOUNDATION PLAN



FOUNDATION PLAN

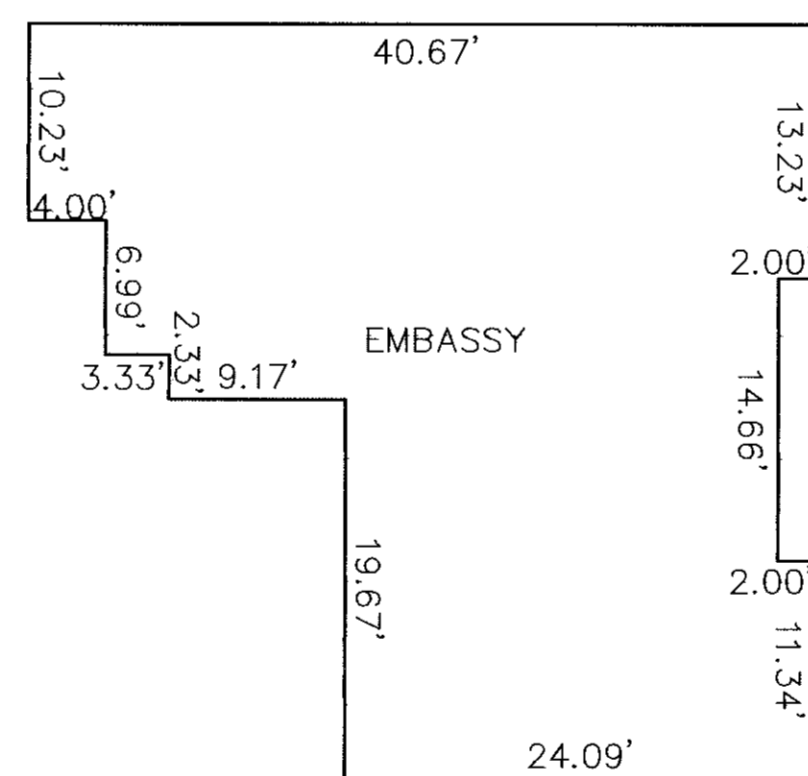


FOUNDATION PLAN



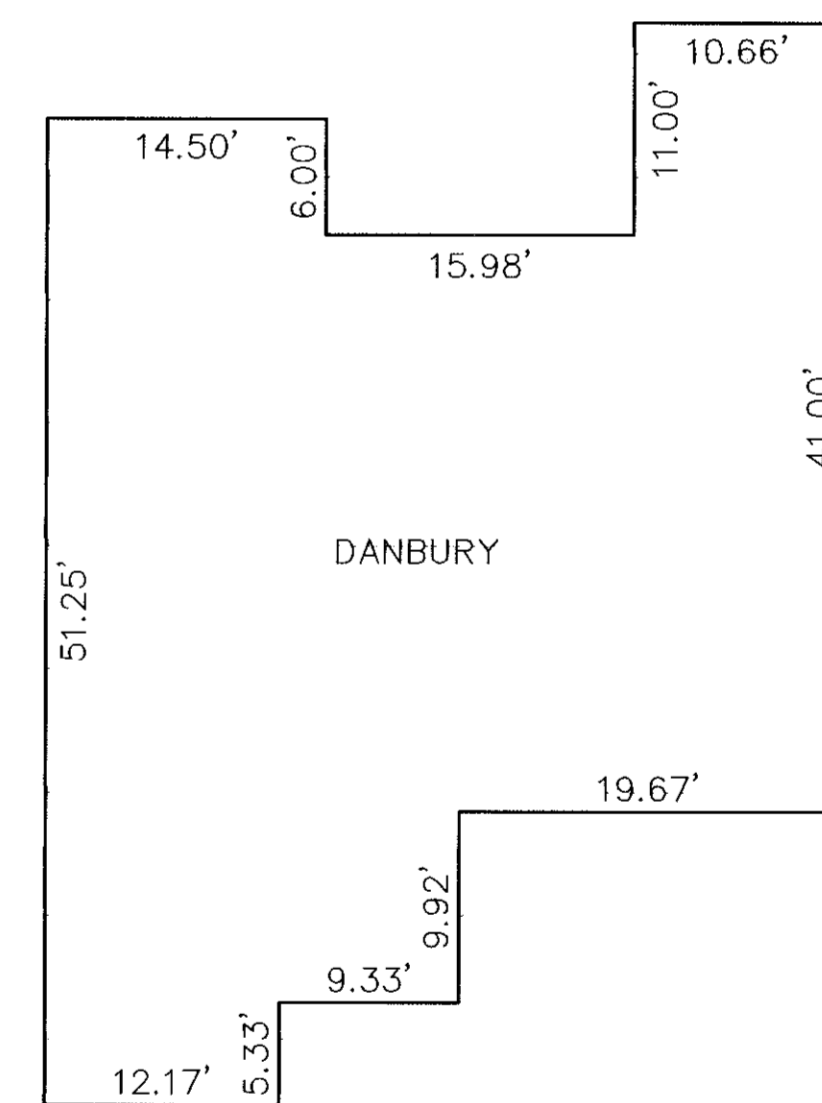
FLOOR PLAN (INTERIOR DIMENSIONS)

NOTE: TYPICAL FOR UNITS: 35 & 36 BUT SUBJECT TO CHANGES IN ORIENTATION



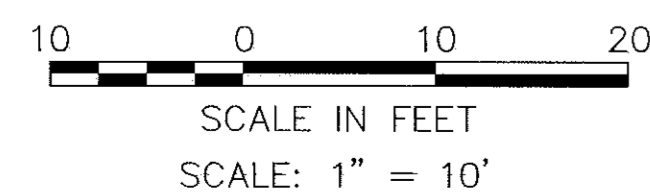
FLOOR PLAN (INTERIOR DIMENSIONS)

NOTE: TYPICAL FOR UNIT: 34 BUT SUBJECT TO CHANGES IN ORIENTATION



FLOOR PLAN (INTERIOR DIMENSIONS)

NOTE: TYPICAL FOR UNIT: 37 BUT SUBJECT TO CHANGES IN ORIENTATION



REVISIONS	DATE	DESCRIPTION	BY

KS ASSOCIATES
 424 Middle Avenue
 P.O. Box 569
 Elyria, Ohio 44036
 Phone (440) 322-6317
 Fax (440) 284-0623
 mailroom@ksassoc.com
 www.ksassoc.com

**STONEHEDGE CONDOMINIUMS
 PHASE NO. 7**
 PART OF ORIGINAL TOWNSHIP SECTION NO. 5
 CITY OF ELYRIA COUNTY OF LORAIN
 STATE OF OHIO

SHEET 3 OF 4
 JOB NO. 92424-CP7

DATE: 2-10-00 DWG. PATH: R:\92424CP7\LDOT\DWG\7-PLAN01



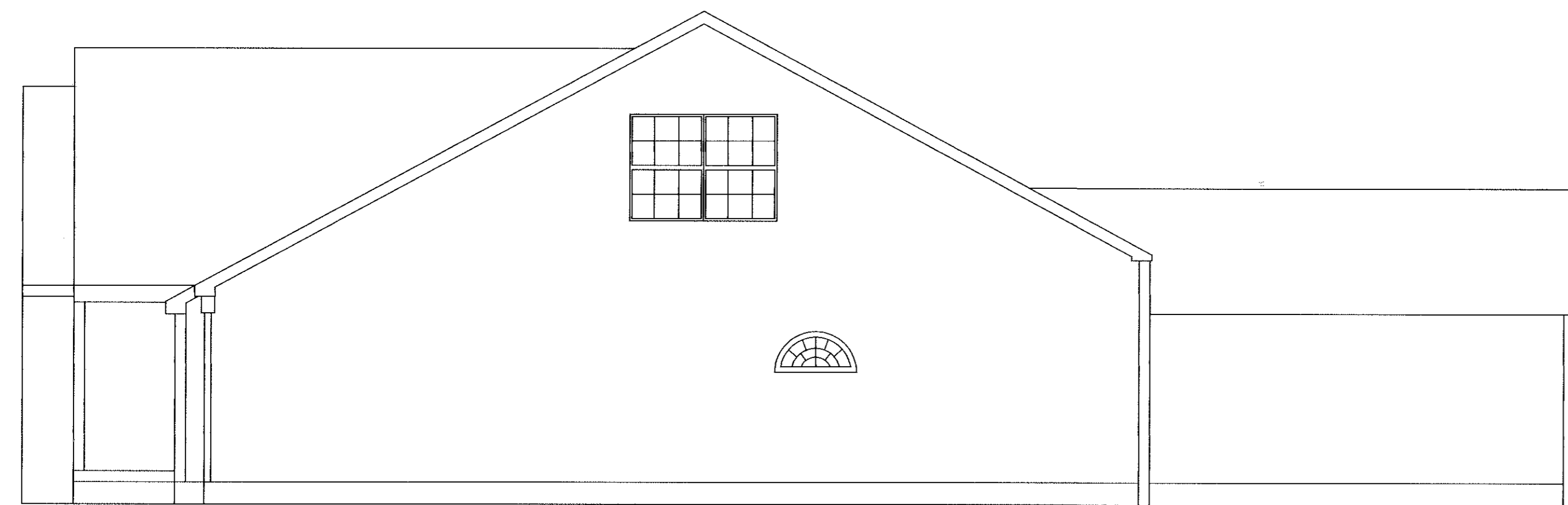
FRONT ELEVATION



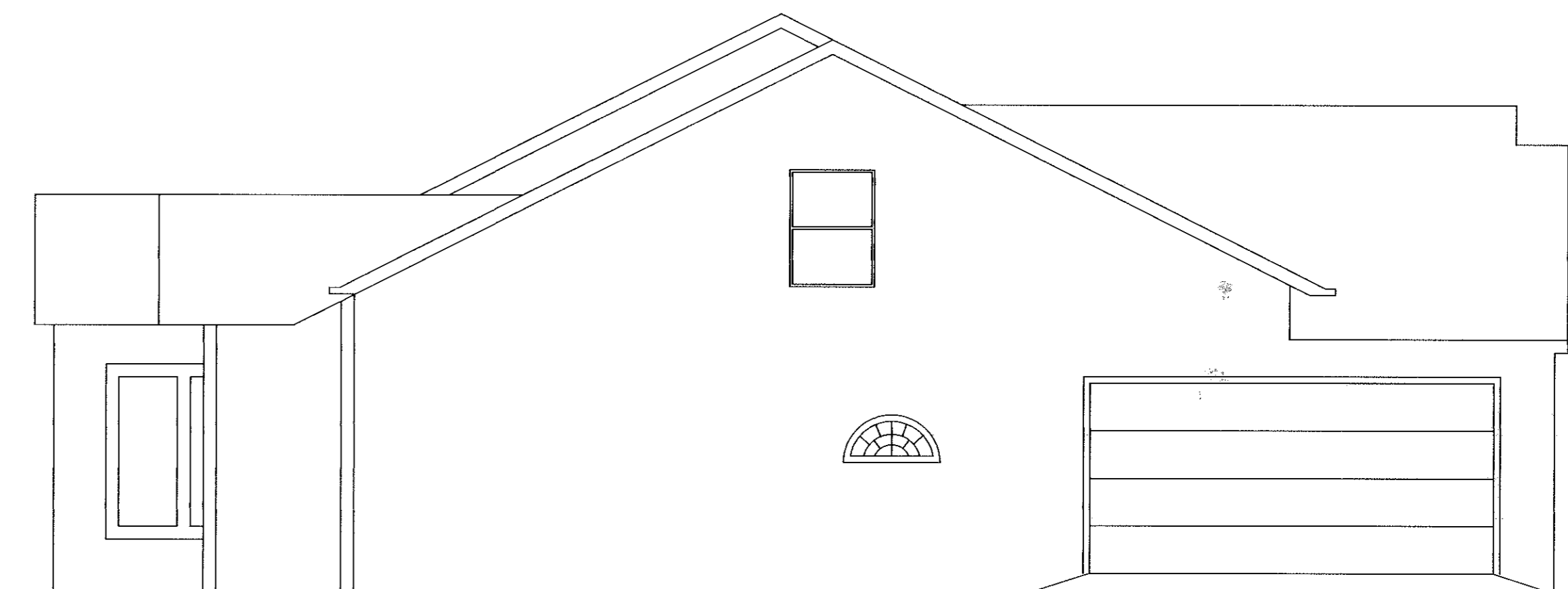
REAR ELEVATION

SCALE: 1" = 5'

NOTE: ELEVATION VIEWS SHOWN ARE TYPICAL FOR OVERALL SITE. INDIVIDUAL VARIATIONS SUBJECT TO GARAGE ORIENTATION, UNIT REVERSAL, SINGLE UNIT CONSTRUCTION, ETC. BUILDINGS ARE UNDER CONSTRUCTION.



LEFT SIDE ELEVATION



RIGHT SIDE ELEVATION

DATE: 2-10-00 DWG. PATH: R:\92424CP7\DDT\DWG\7-ELEV01

REVISIONS	DATE	DESCRIPTION	BY

KS ASSOCIATES
 424 Middle Avenue
 P.O. Box 569
 Elyria, Ohio 44036
 Phone (440) 322-6317
 Fax (440) 284-0623
 mailroom@ksassoc.com
 www.ksassoc.com

STONEHEDGE CONDOMINIUMS
PHASE NO. 7

ELEVATION VIEWS

SHEET
4 OF
4
JOB NO.
92424-CP7