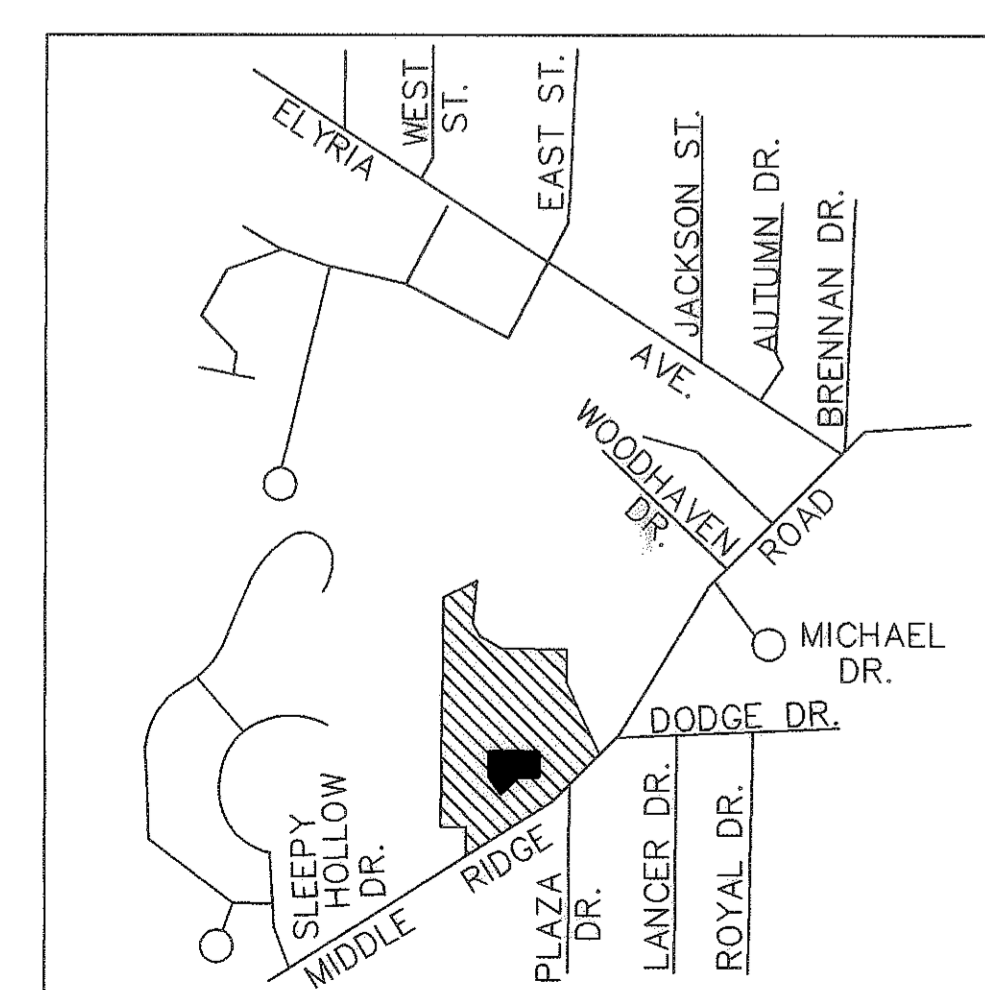
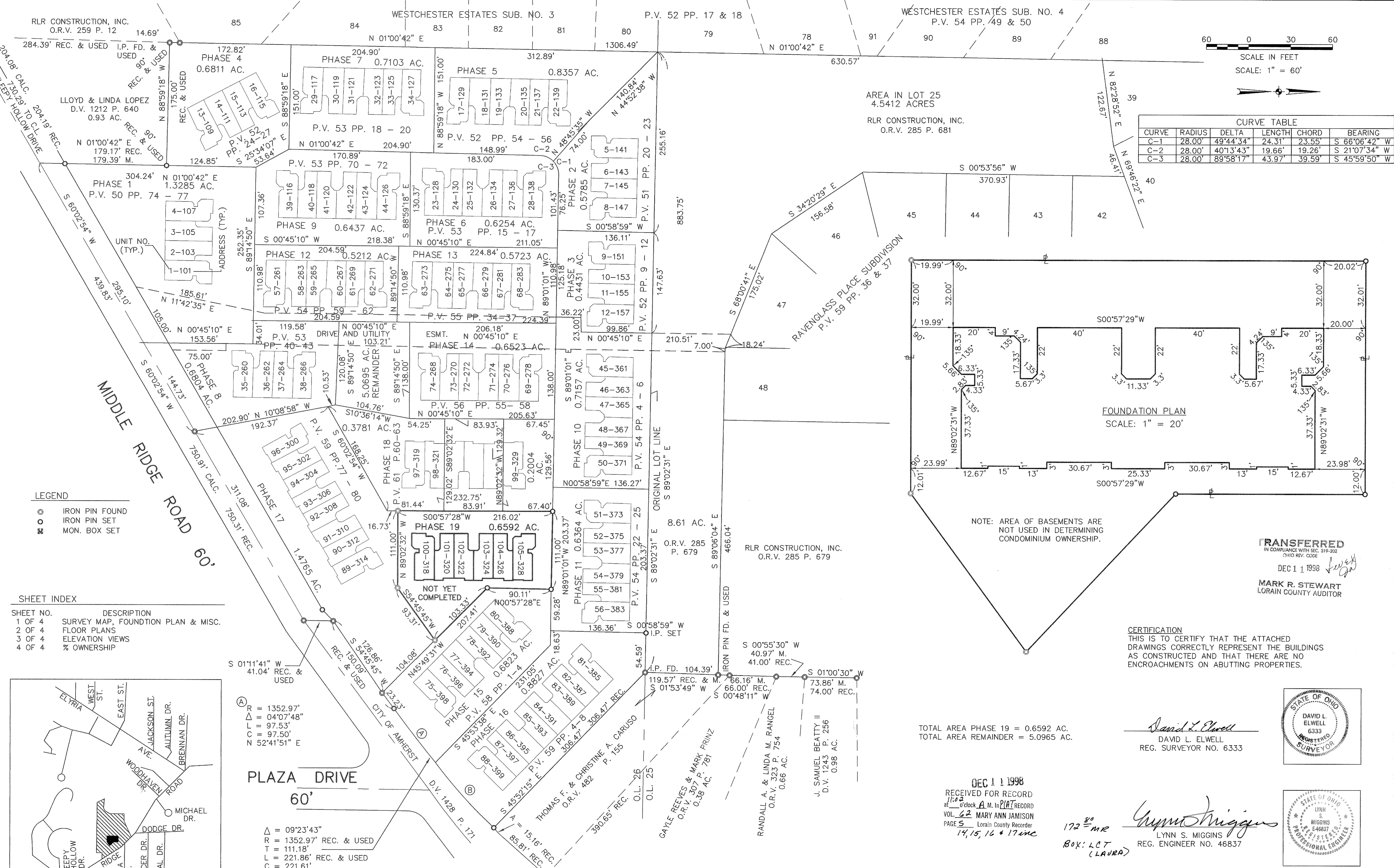


CURVE TABLE					
CURVE	RADIUS	DELTA	LENGTH	CHORD	BEARING
C-1	28.00'	49°44'34"	24.31'	23.55'	S 66°06'42" W
C-2	28.00'	40°13'43"	19.66'	19.26'	S 21°07'34" W
C-3	28.00'	89°58'17"	43.97'	39.59'	S 45°59'50" W



Δ = 09°23'43"
R = 1352.97' REC. & USED
T = 111.18'
L = 221.86' REC. & USED
C = 221.61'
N 50°03'54" E

ⓐ R = 1352.97'
Δ = 05°15'55"
L = 124.33'
T = 124.29'
C = 221.61'
N 47°59'56" W

DATE:	11-17-98
DRAWN BY:	VY
CHK'D BY:	
F.B.:	
DWG. NAME:	B:\89224-1919-SUB901

REVISIONS	DATE	DESCRIPTION

THE ENGLISH LAKES CONDOMINIUMS
PHASE 19

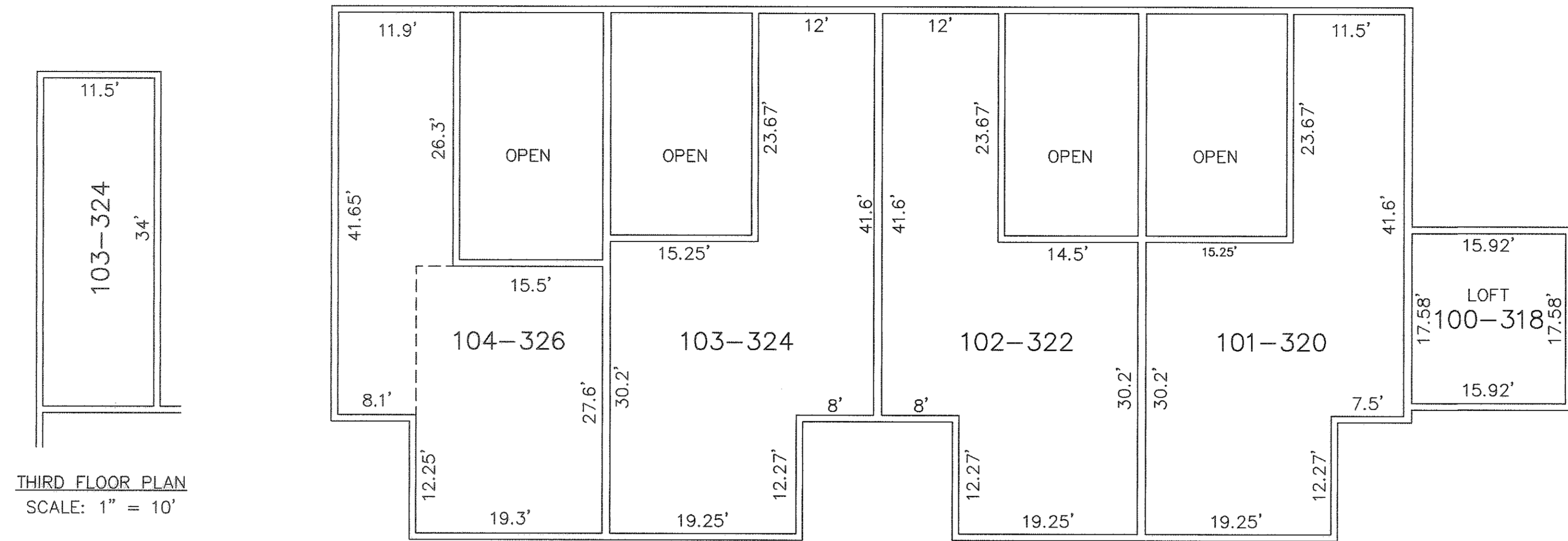
PART OF AMHERST TOWNSHIP O.L.s 25 & 26
CITY OF AMHERST * COUNTY OF LORAIN * STATE OF OHIO

KS ASSOCIATES, INC.
ENGINEERS/SURVEYORS
424 Middle Avenue
P.O. Box 89
Elyria, Ohio 44036
PHONE: (440) 322-6317 * FAX: (440) 284-0623

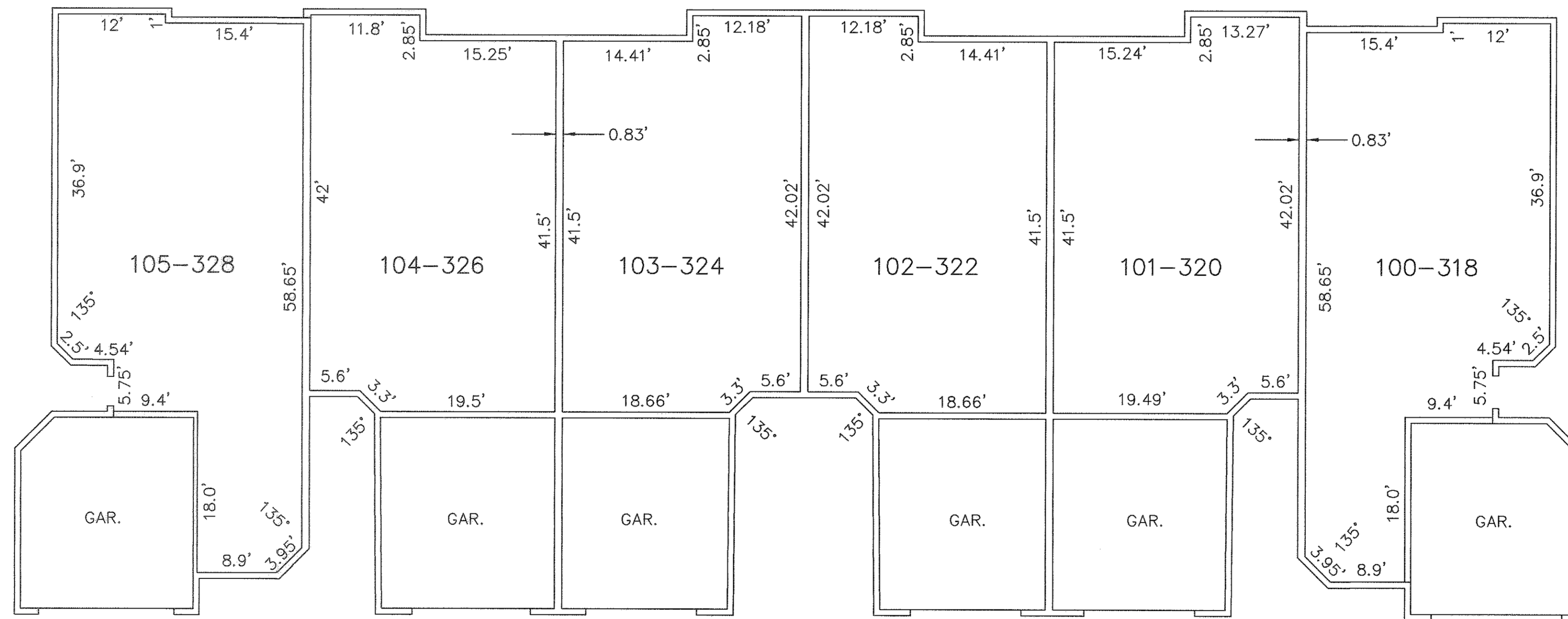
STATE OF OHIO
DAVID L. ELWELL
6333
REGISTERED SURVEYOR

STATE OF OHIO
LYNN S. MIGGINS
46837
REGISTERED PROFESSIONAL ENGINEER

SHEET 1 OF 4
JOB NO. 89224-CP19



SECOND FLOOR PLAN
SCALE: 1" = 10'

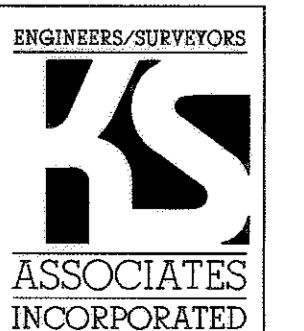


FIRST FLOOR PLAN
SCALE: 1" = 10'

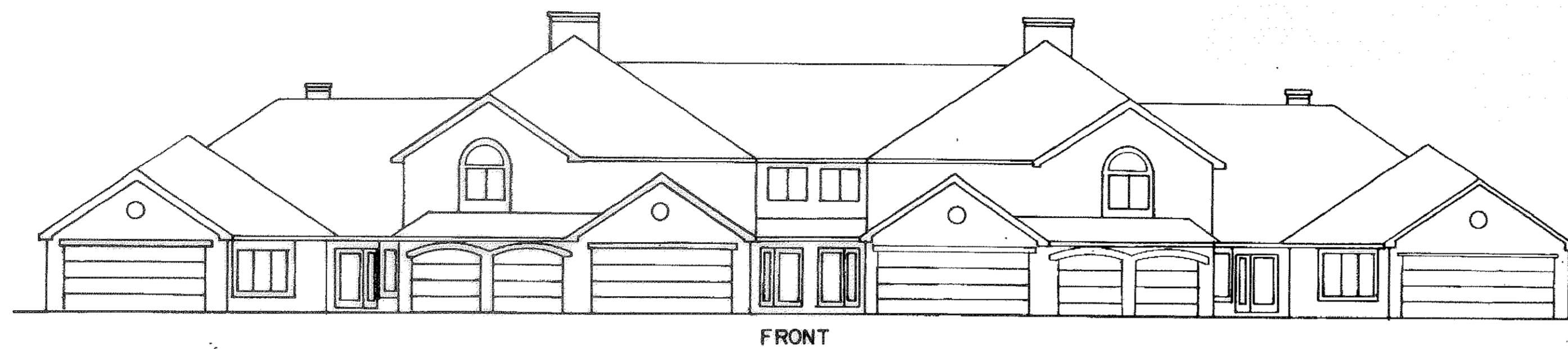
DATE: 11-17-98	REVISIONS	
DRAWN BY: VY		
CHK'D BY:		
F.B.:		
DWG. NAME: 89224-19-19-PLAN01		

THE ENGLISH LAKES CONDOMINIUMS
PHASE 19
FLOOR PLANS
PART OF AMHERST TOWNSHIP O.L.s 25 & 26
CITY OF AMHERST * COUNTY OF LORAIN * STATE OF OHIO

KS ASSOCIATES, INC.
ENGINEERS/SURVEYORS
424 Middle Avenue
P.O. Box 89
Elyria, Ohio 44036
PHONE: (440) 322-6317 * FAX: (440) 284-0623



SHEET 2 OF 4
JOB NO. 89224-CP19



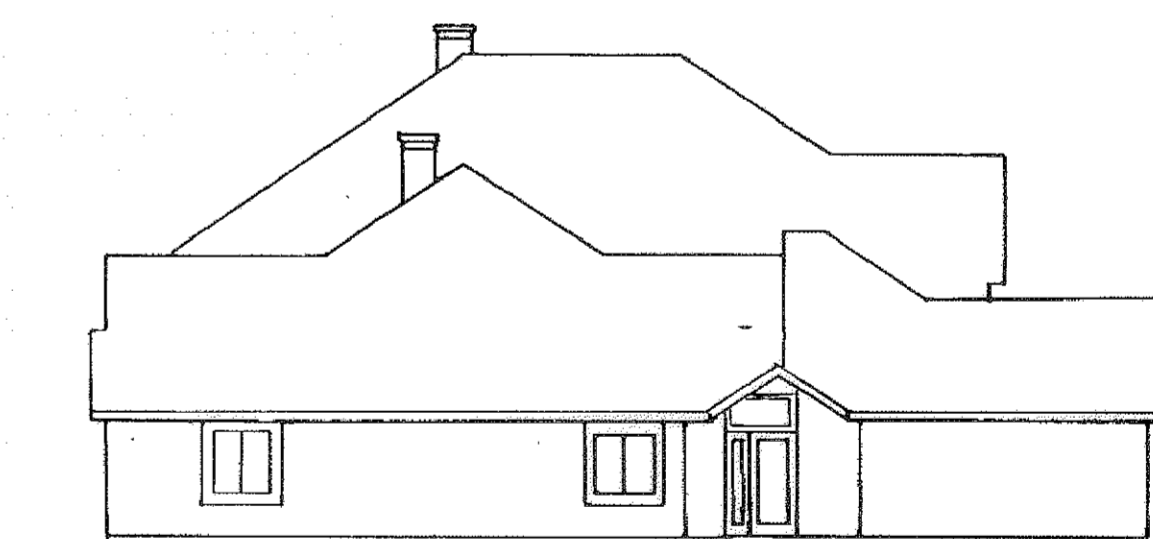
FRONT



RIGHT



REAR



LEFT

NOTE: BUILDING SHOWN IS FOR GENERAL APPEARANCE ONLY.
 TYPICAL 6 UNIT FOR PROJECT.
 VARIATIONS PER SPECIFIC BUILDING MAY OCCUR.

DATE: 11-17-98	REVISIONS	
DRAWN BY: VY		
CH'D BY:		
F.B.:		
DWG. NAME: 89224-19-19-ELEV01		

THE ENGLISH LAKES CONDOMINIUMS
 PHASE 19
 EXTERIOR ELEVATIONS
 PART OF AMHERST TOWNSHIP O.L.s 25 & 26
 CITY OF AMHERST * COUNTY OF LORAIN * STATE OF OHIO

KS ASSOCIATES, INC.
 ENGINEERS/SURVEYORS
 424 Middle Avenue
 P.O. Box 89
 Elyria, Ohio 44036
 PHONE: (440) 322-6317 * FAX: (440) 284-0623



SHEET 3 OF 4
 JOB NO. 89224-CP19

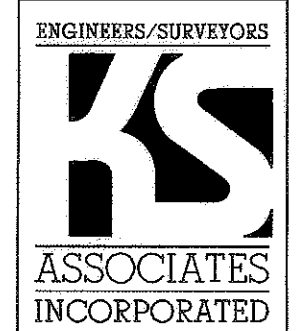
OWNERSHIP LIST

UNIT NO.	SQ. FT.	ELEV. 1ST FL	% OWNERSHIP	UNIT NO.	SQ. FT.	ELEV. 1ST FL	% OWNERSHIP
1-101	1388	723.40	0.7947	59-265	1769	722.57	1.0129
2-103	1626	723.40	0.9310	60-267	1769	722.60	1.0129
3-105	1769	723.40	1.0129	61-269	1626	722.60	0.9310
4-107	1388	723.40	0.7947	62-271	1675	722.60	1.0129
5-141	1388	719.38	0.7947	63-273	1388	720.74	0.7947
6-143	1626	719.38	0.9310	64-275	1626	720.71	0.9310
7-145	1769	719.38	1.0129	65-277	2177	720.69	1.2465
8-147	1388	719.38	0.7947	66-279	1769	720.68	1.0129
9-151	1388	719.53	0.7947	67-281	1626	720.73	0.9310
10-153	1626	719.53	0.9310	68-283	1388	720.70	0.7947
11-155	1769	719.53	1.0129	69-278	1388	721.15	0.7947
12-157	1388	719.53	0.7947	70-276	1626	721.16	0.9310
13-109	1388	722.30	0.7947	71-274	2177	721.21	1.2465
14-111	1626	722.30	0.9310	72-272	1769	721.21	1.0129
15-113	1769	722.30	1.0129	73-270	1626	721.22	0.9310
16-115	1388	722.30	0.7947	74-268	1675	721.15	0.9590
17-129	1388	720.10	0.7947	75-398	1388	730.28	0.7947
18-131	1626	720.10	0.9310	76-396	1626	727.02	0.9310
19-133	2177	720.10	1.2465	77-394	1769	727.02	1.0129
20-135	1769	720.10	1.0129	78-392	1769	723.63	1.0129
21-137	1626	720.10	0.9310	79-390	1626	723.63	0.9310
22-139	1388	720.10	0.7947	80-388	1388	722.30	0.7947
23-128	1388	719.53	0.7947	81-385	1668	721.71	0.9550
24-130	1626	719.45	0.9310	82-387	1580	722.33	0.9046
25-132	1769	719.45	1.0129	83-389	1769	722.30	1.0129
26-134	2177	719.45	1.2465	84-391	2253	724.40	1.2900
27-136	1626	719.50	0.9310	85-393	2253	724.44	1.2900
28-138	1388	719.47	0.7947	86-395	2253	728.39	1.2900
29-117	1388	721.20	0.7947	87-397	1580	728.39	0.9046
30-119	1626	721.21	0.9310	88-399	1388	731.25	0.7947
31-121	1769	721.21	1.0129	89-314	1388	726.13	0.7947
32-123	2177	721.24	1.2465	90-312	1580	726.13	0.9046
33-125	1626	721.25	0.9310	91-310	1769	726.13	1.0129
34-127	1388	721.22	0.7947	92-308	2253	726.13	1.2900
35-260	1388	724.73	0.7947	93-306	2253	726.13	1.2900
36-262	2177	724.68	1.2465	94-304	1769	725.55	1.0129
37-264	1626	724.66	0.9310	95-302	1580	726.15	0.9046
38-266	1388	724.66	0.7947	96-300	1668	726.15	0.9550
39-116	1388	720.82	0.7947	97-319	1388	723.33	0.7947
40-118	1626	720.83	0.9310	98-321	1580	723.33	0.9046
41-120	2177	720.83	1.2465	99-329	1668	723.33	0.9550
42-122	1769	720.82	1.0129	100-318	1668	723.60	0.9550
43-124	1626	720.80	0.9310	101-320	1626	723.60	0.9310
44-126	1388	720.77	0.7947	102-322	1769	723.60	1.0129
45-361	1388	719.44	0.7947	103-324	2177	723.60	1.2465
46-363	1626	719.38	0.9310	104-326	1626	723.60	0.9310
47-365	2177	719.39	1.2465	105-328	1388	723.60	0.7947
48-367	2177	719.40	1.2465				
49-369	1626	719.40	0.9310				
50-371	1388	719.43	0.7947				
51-373	1388	721.52	0.7947				
52-375	1626	721.53	0.9310				
53-377	1769	721.53	1.0129				
54-379	1769	721.54	1.0129				
55-381	1626	721.52	0.9310				
56-383	1388	721.53	0.7947				
57-261	1388	722.55	0.7947				
58-263	1626	722.55	0.9310				
				TOTAL	174,655		100.00%

DATE: 11-17-98	REVISIONS	
DRAWN BY: VY		
CH'D BY:		
F.B.:		
DWG. NAME: 89224-19 OWNERSHIP		

THE ENGLISH LAKES CONDOMINIUMS
 PHASE 19
 OWNERSHIP PERCENTAGES
 PART OF AMHERST TOWNSHIP O.L.s 25 & 26
 CITY OF AMHERST * COUNTY OF LORAIN * STATE OF OHIO

KS ASSOCIATES, INC.
 ENGINEERS/SURVEYORS
 424 Middle Avenue
 P.O. Box 89
 Elyria, Ohio 44036
 ELYRIA (440) 322-6317 * LORAIN (440) 244-5757



SHEET 4 OF 4
 JOB NO. 89224-CP19