

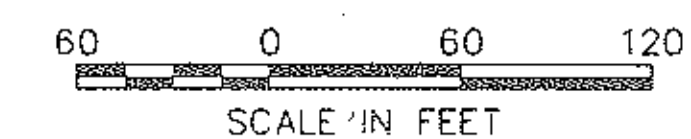
# SUBDIVISION PLAT RED TAIL DEVELOPMENT NO. 4

THIS PLAT IS A RE-SUBDIVISION OF PART OF RED TAIL DEVELOPMENT  
NO. 2, PLAT VOLUME 59, PAGES 65 & 66

PART OF ORIGINAL AVON TOWNSHIP LOT NO. 24  
CITY OF AVON, COUNTY OF LORAIN, STATE OF  
OHIO CONTAINING 17.5879 ACRES OF LAND OF  
WHICH 3.9312 ACRES ARE DEDICATED STREETS,  
5.1026 ACRES ARE IN BLOCKS AND 8.5541 ACRES  
ARE WITHIN THE SUBDIVISION OF LOTS 255 TO 309  
INCLUSIVE.

FEBRUARY 16, 1998

CARNEGIE RESIDENTIAL  
DEVELOPMENT CORP.  
O.R. 911, PG. 544



BLOCK "R"  
18.2850 Ac.

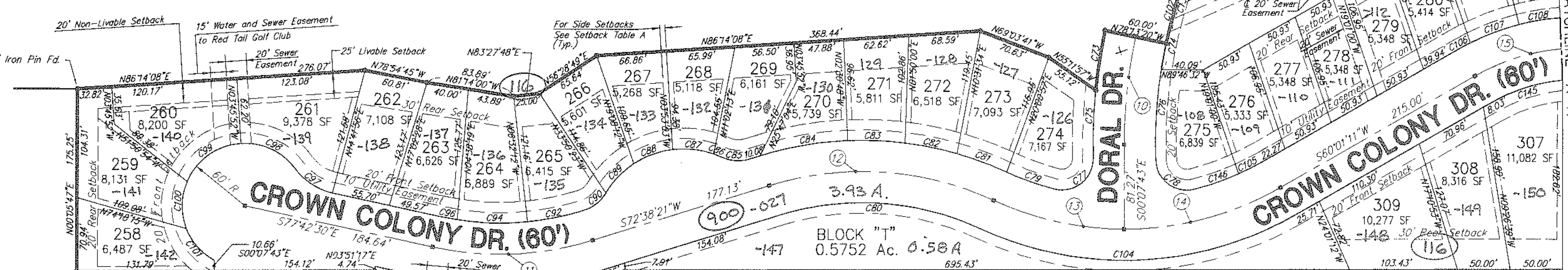
SETBACK TABLE A				
Lot Number	Side	Side	Front	Rear
255	5'	5'	20'	30'
256	10'(W)	5'	20'	30'
257	10'(E)	5'	20'	30'
258 and 259	5'	5'	20'	20'
260	5'(W)	25'(E)	20'	25'
261	10'(W)	5'(E)	20'	25'
262 thru 273	5'	5'	20'	30'
274	5'(W)	20'(E)	20'	20'
275	20'(W)	5'(E)	20'	20'
276 and 277	5'	5'	20'	20'
278	5'(W)	10'(E)	20'	20'
279	10'(W)	5'(E)	20'	20'
280 thru 285	5'	5'	20'	20'
286	20'(S)	5'(N)	20'	20'
287 and 288	5'	5'	20'	10'
289	5'(S)	10'(N)	20'	20'
290	10'(S)	5'(N)	20'	30'
291 thru 300	5'	5'	20'	30'
301	5'	5'	20'	25'
302	5'	5'	20'	20'
303	20'(S)	5'(N)	20'	20'
304	5'	5'	20'	25'
305 thru 309	5'	5'	20'	30'

**BLOCK ACREAGE**

BLOCK S	= 0.6885 AC.
BLOCK T	= 0.5752 AC.
BLOCK U	= 0.0841 AC.
BLOCK V	= 0.0580 AC.
BLOCK W	= 3.6968 AC.
<b>TOTAL</b>	<b>= 5.1026 AC.</b>

**R/W CENTERLINE CURVE DATA**

Curve No.	Radius	Delta	Arc Length	Tangent	Chord
10	1154.23'	29°39'09"	40.12	20.84	55406.30' W 39.38'
11	300.00'	29°39'09"	40.12	20.84	N87°38'15" W 39.26'
12	300.00'	29°39'09"	40.12	20.84	N40°59'26" W 55.50'
13	52.14'	79.41'	115.49'	220.48'	215.55'
14	103.90'	155.26'	220.48'	215.55'	215.55'
15	103.72'	153.53'	215.55'	215.55'	215.55'
16	2444.53'	29°58'49"	84°59'22"	200.00'	200.00'
17	300.00'	29°58'49"	84°59'22"	200.00'	200.00'
18	65.82'	80.33'	183.23'	296.67'	270.21'
19	129.58'	156.98'	296.67'	270.21'	270.21'
20	128.58'	155.19'	270.21'	270.21'	270.21'
21	2206.22'	33°01'54"	11°01'30"	340.00'	340.00'
22	200.00'	33°01'54"	11°01'30"	340.00'	340.00'
23	39.07'	59.30'	32.81'	65.42'	65.42'
24	77.17'	115.30'	65.42'	65.42'	65.42'
25	76.69'	113.71'	65.32'	204.16'	204.16'
26	2235.50'	15°18'48"	61°22'55"	200.00'	200.00'
27	200.00'	15°18'48"	61°22'55"	200.00'	200.00'
28	39.96'	26.89'	118.71'	214.26'	204.16'
29	78.88'	53.45'	214.26'	204.16'	204.16'
30	78.37'	53.30'	204.16'	204.16'	204.16'



AVON DEVELOPMENT CO. 4-00-024-128-101 VOL 517, PG. 48

WELLINGTON BOSWORTH 4-00-024-128-100 VOL 439, PG. 300

AVON DEVELOPMENT CO. 4-00-024-128-099 O.R. VOL 167, PG. 159

XERKES CORP. 4-00-024-128-098 O.R. VOL 167, PG. 159

BENCH MANAGEMENT INC. 4-00-024-128-097 O.R. VOL 147, PG. 148

ROBERT G. & NELL C. PEPIN 4-00-024-128-105 VOL 1335, PG. 815

WELLINGTON BOSWORTH 4-00-024-128-102 VOL 473, PG. 147

WELLINGTON BOSWORTH 4-00-024-128-104 O.R. VOL 82, PG. 565

WELLINGTON BOSWORTH 4-00-024-128-103 O.R. VOL 82, PG. 565

Block "S" 0.6885 Ac. -144, -145, -146, -147, -148, -149, -150, -151, -152, -153, -154, -155, -156, -157, -158, -159, -160, -161, -162, -163, -164, -165, -166, -167, -168, -169, -170, -171, -172, -173, -174, -175, -176, -177, -178, -179, -180, -181, -182, -183, -184, -185, -186, -187, -188, -189, -190, -191, -192, -193, -194, -195, -196, -197, -198, -199, -200, -201, -202, -203, -204, -205, -206, -207, -208, -209, -210, -211, -212, -213, -214, -215, -216, -217, -218, -219, -220, -221, -222, -223, -224, -225, -226, -227, -228, -229, -230, -231, -232, -233, -234, -235, -236, -237, -238, -239, -240, -241, -242, -243, -244, -245, -246, -247, -248, -249, -250, -251, -252, -253, -254, -255, -256, -257, -258, -259, -260, -261, -262, -263, -264, -265, -266, -267, -268, -269, -270, -271, -272, -273, -274, -275, -276, -277, -278, -279, -280, -281, -282, -283, -284, -285, -286, -287, -288, -289, -290, -291, -292, -293, -294, -295, -296, -297, -298, -299, -300, -301, -302, -303, -304, -305, -306, -307, -308, -309

Block "T" 0.5752 Ac. -147, -148, -149, -150, -151, -152, -153, -154, -155, -156, -157, -158, -159, -160, -161, -162, -163, -164, -165, -166, -167, -168, -169, -170, -171, -172, -173, -174, -175, -176, -177, -178, -179, -180, -181, -182, -183, -184, -185, -186, -187, -188, -189, -190, -191, -192, -193, -194, -195, -196, -197, -198, -199, -200, -201, -202, -203, -204, -205, -206, -207, -208, -209, -210, -211, -212, -213, -214, -215, -216, -217, -218, -219, -220, -221, -222, -223, -224, -225, -226, -227, -228, -229, -230, -231, -232, -233, -234, -235, -236, -237, -238, -239, -240, -241, -242, -243, -244, -245, -246, -247, -248, -249, -250, -251, -252, -253, -254, -255, -256, -257, -258, -259, -260, -261, -262, -263, -264, -265, -266, -267, -268, -269, -270, -271, -272, -273, -274, -275, -276, -277, -278, -279, -280, -281, -282, -283, -284, -285, -286, -287, -288, -289, -290, -291, -292, -293, -294, -295, -296, -297, -298, -299, -300, -301, -302, -303, -304, -305, -306, -307, -308, -309

Block "U" 0.0841 Ac. -147, -148, -149, -150, -151, -152, -153, -154, -155, -156, -157, -158, -159, -160, -161, -162, -163, -164, -165, -166, -167, -168, -169, -170, -171, -172, -173, -174, -175, -176, -177, -178, -179, -180, -181, -182, -183, -184, -185, -186, -187, -188, -189, -190, -191, -192, -193, -194, -195, -196, -197, -198, -199, -200, -201, -202, -203, -204, -205, -206, -207, -208, -209, -210, -211, -212, -213, -214, -215, -216, -217, -218, -219, -220, -221, -222, -223, -224, -225, -226, -227, -228, -229, -230, -231, -232, -233, -234, -235, -236, -237, -238, -239, -240, -241, -242, -243, -244, -245, -246, -247, -248, -249, -250, -251, -252, -253, -254, -255, -256, -257, -258, -259, -260, -261, -262, -263, -264, -265, -266, -267, -268, -269, -270, -271, -272, -273, -274, -275, -276, -277, -278, -279, -280, -281, -282, -283, -284, -285, -286, -287, -288, -289, -290, -291, -292, -293, -294, -295, -296, -297, -298, -299, -300, -301, -302, -303, -304, -305, -306, -307, -308, -309

Block "V" 0.0580 Ac. -147, -148, -149, -150, -151, -152, -153, -154, -155, -156, -157, -158, -159, -160, -161, -162, -163, -164, -165, -166, -167, -168, -169, -170, -171, -172, -173, -174, -175, -176, -177, -178, -179, -180, -181, -182, -183, -184, -185, -186, -187, -188, -189, -190, -191, -192, -193, -194, -195, -196, -197, -198, -199, -200, -201, -202, -203, -204, -205, -206, -207, -208, -209, -210, -211, -212, -213, -214, -215, -216, -217, -218, -219, -220, -221, -222, -223, -224, -225, -226, -227, -228, -229, -230, -231, -232, -233, -234, -235, -236, -237, -238, -239, -240, -241, -242, -243, -244, -245, -246, -247, -248, -249, -250, -251, -252, -253, -254, -255, -256, -257, -258, -259, -260, -261, -262, -263, -264, -265, -266, -267, -268, -269, -270, -271, -272, -273, -274, -275, -276, -277, -278, -279, -280, -281, -282, -283, -284, -285, -286, -287, -288, -289, -290, -291, -292, -293, -294, -295, -296, -297, -298, -299, -300, -301, -302, -303, -304, -305, -306, -307, -308, -309

Block "W" 3.6968 Ac. -107, -108, -109, -110, -111, -112, -113, -114, -115, -116, -117, -118, -119, -120, -121, -122, -123, -124, -125, -126, -127, -128, -129, -130, -131, -132, -133, -134, -135, -136, -137, -138, -139, -140, -141, -142, -143, -144, -145, -146, -147, -148, -149, -150, -151, -152, -153, -154, -155, -156, -157, -158, -159, -160, -161, -162, -163, -164, -165, -166, -167, -168, -169, -170, -171, -172, -173, -174, -175, -176, -177, -178, -179, -180, -181, -182, -183, -184, -185, -186, -187, -188, -189, -190, -191, -192, -193, -194, -195, -196, -197, -198, -199, -200, -201, -202, -203, -204, -205, -206, -207, -208, -209, -210, -211, -212, -213, -214, -215, -216, -217, -218, -219, -220, -221, -222, -223, -224, -225, -226, -227, -228, -229, -230, -231, -232, -233, -234, -235, -236, -237, -238, -239, -240, -241, -242, -243, -244, -245, -246, -247, -248, -249, -250, -251, -252, -253, -254, -255, -256, -257, -258, -259, -260, -261, -262, -263, -264, -265, -266, -267, -268, -269, -270, -271, -272, -273, -274, -275, -276, -277, -278, -279, -280, -281, -282, -283, -284, -285, -286, -287, -288, -289, -290, -291, -292, -293, -294, -295, -296, -297, -298, -299, -300, -301, -302, -303, -304, -305, -306, -307, -308, -309

Curve No.	Radius	Delta	Arc Length	Tangent	Chord
C126	60.00'	38°18'40"	40.12	20.84	S54°06'30" W 39.38'
C127	60.00'	38°11'50"	40.00	20.78	N87°38'15" W 39.26'
C128	60.00'	55°05'49"	57.70	31.30	N40°59'26" W 55.50'
C129	60.00'	61°06'14"	63.99	35.42	N65°19'47" E 61.00'
C130	60.00'	51°57'12"	54.41	29.23	S69°54'18" W 52.56'
C131	170.00'	18°14'26"	54.12	27.29	S34°48'29" W 53.89'
C132	170.00'	17°02'10"	50.55	25.46	S17°10'11" W 50.36'
C133	170.00'	13°39'34"	40.53	20.36	S01°49'19" W 40.43'
C134	230.00'	02°34'14"	10.32	5.16	N03°43'20" W 10.32'
C135	230.00'	12°44'54"	51.15	25.68	N03°56'04" E 51.05'
C136	170.00'	09°21'25"	27.76	13.91	N85°27'00" W 27.73'
C137	-	-	-	-	-
C138	310.00'	11°01'30"	59.65	29.92	N84°36'58" W 59.56'
C139	230.00'	19°21'21"	77.70	39.22	N80°27'02" W 77.33'
C140	230.00'	35°46'55"	143.64	74.25	N52°52'54" W 141.31'
C141	170.00'	09°00'18"	26.72	13.39	N39°29'36" W 26.69'
C142	170.00'	22°35'24"	67.03	33.95	N55°17'28" W 66.59'
C143	170.00'	22°08'56"	65.72	33.27	N77°39'38" W 65.51'
C144	170.00'	06°44'56"	20.02	10.02	N87°35'27" E 20.01'
C145	170.00'	24°29'48"	72.68	36.91	N72°16'05" E 72.13'
C146	270.00'	09°27'23"	44.56	22.33	N70°46'43" E 44.51'
C147	230.00'	04°48'19"	19.29	9.65	N12°42'31" E 19.28'
C148	230.00'	08°00'15"	32.13	16.09	N19°06'48" E 32.10'
C149	30.00'	103°53'13"	54.40	38.32	S28°49'41" E 47.24'
C150	170.00'	09°21'25"	27.76	13.91	S85°27'00" E 27.73'
C151	370.00'	00°08'40"	0.93	0.47	S89°56'37" W 0.93'

Curve No.	Radius	Delta	Arc Length	Tangent	Chord	Curve No.	Radius	Delta	Arc Length	Tangent	Chord
C73	530.00'	06°16'24"	58.03	29.04	N08°38'28" E 58.00'						
C74	470.00'	06°00'02"	49.22	24.63	N11°39'03" E 49.20'						
C75	530.00'	07°00'57"	64.90	32.49	N01°59'48" E 64.86'						
C76	470.00'	10°34'18"	86.72	43.48	N03°21'53" E 86.60'						
C77	30.00'	105°59'10"	55.49	39.80	N51°28'54" E 47.91'						
C78	30.00'	102°34'20"	53.71	37.43	N53°12'26" W 46.82'						
C79	270.00'	10°16'24"	48.41	24.27	N70°23'19" W 48.35'						
C80	270.00'	102°34'20"	198.43	103.94	N86°18'23" W 194.00'						
C81	330.00'	08°51'02"	50.98	25.54	N89°40'38" W 50.92'						
C82	330.00'	08°51'02"	50.98	25.54	N78°31'40" W 50.92'						
C83	330.00'	09°33'37"	55.06	27.60	N87°43'59" W 55.00'						
C84	330.00'	14°50'51"	85.51	43.00	N80°03'47" E 85.28'						
C85	38.00'	41°55'36"	27.81	14.56	N86°23'51" W 27.19'						
C86	87.00'	05°26'07"	8.25	4.13	N88°08'06" W 8.25'						
C87	87.00'	26°20'34"	40.00	20.36	N84°02'27" W 39.65'						
C88	87.00'	26°20'34"	40.00	20.36	N69°36'59" E 39.65'						
C89	87.00'	25°43'58"	39.07	19.87	N43°34'43" E 38.75'						
C90	38.00'	41°55'36"	27.81	14.56	N51°40'33" E 27.19'						
C91	330.00'	08°51'02"	50.98	25.54	N78°12'46" E 50.92'						
C92	270.00'	11°38'43"	54.88	27.53	N82°24'31" E 54.78'						
C93	330.00'	10°33'49"	67.84	33.51	N84°42'05" E 67.76'						
C94	270.00'	14°19'55"	87.54	43.55	N84°44'19" W 87.36'						
C95	330.00'	10°33'23"	60.80	30.49	N84°44'19" W 60.71'						



CARNEGIE RESIDENTIAL DEVELOPMENT CORP. O.R. 911, PG. 544

CARNEGIE RESIDENTIAL DEVELOPMENT CORP. O.R. 911, PG. 544

BLOCK "W" (Continued on Sheet 1) 3.6968 Ac.

-107 3.70A

