

Scale 1" = 120 ft

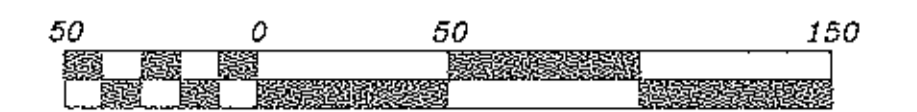


REVISIONS	

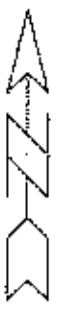
THE RESERVE OF AVON LAKE  
SUBDIVISION NO. 3  
BOUNDARY SURVEY

**J.A.R. Engineering  
& Surveying, Inc.**  
24629 DETROIT ROAD WESTLAKE, OHIO 44145  
Phone: (216)-871-8345

2  
3  
12/97

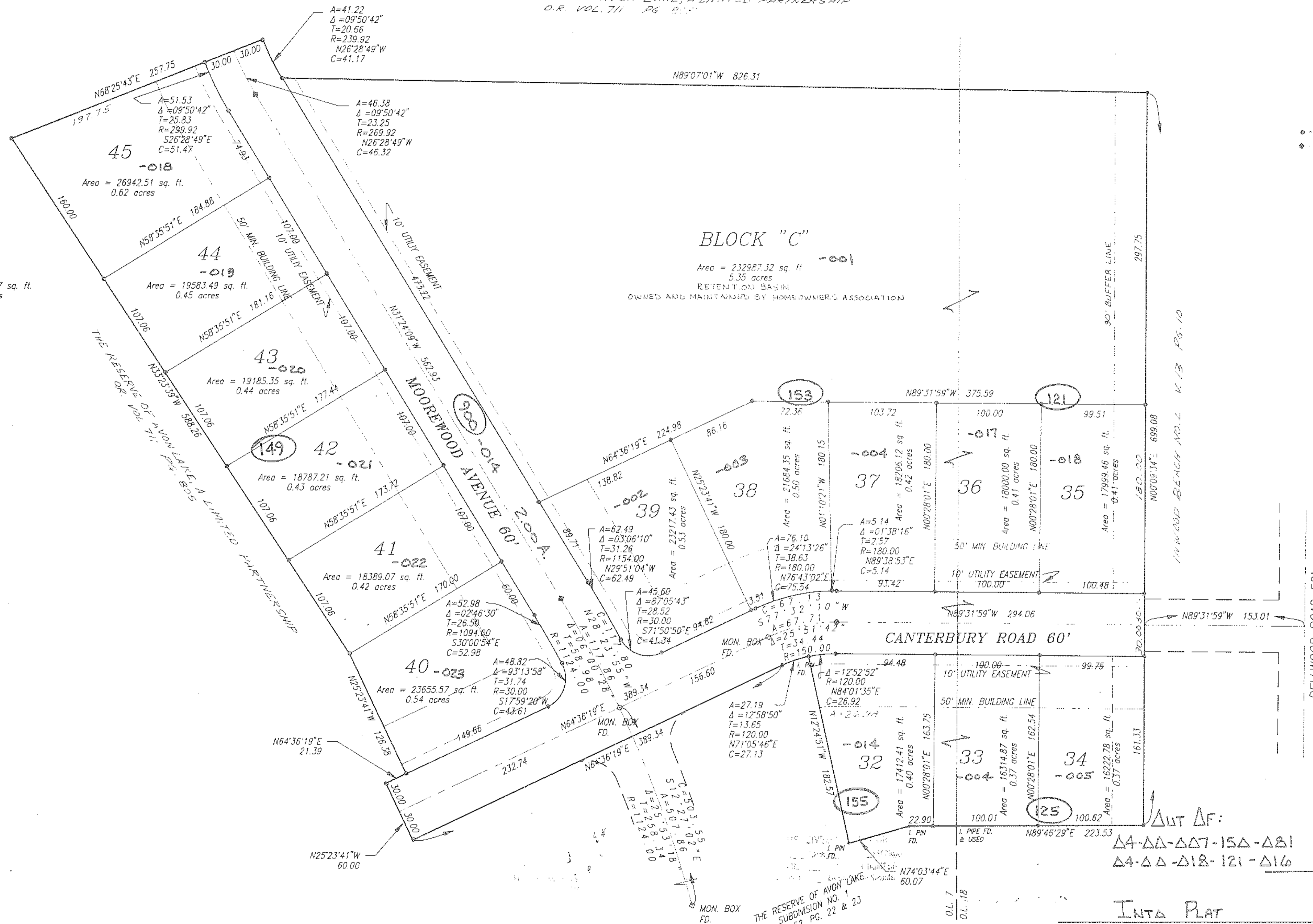


Scale 1" = 50 ft



- IRON PIN SET
- ◆ IRON PIN IN MONUMENT SET

THE RESERVE OF AVON LAKE, A LIMITED PARTNERSHIP  
O.R. VOL. 711 PG. 805



Area = 595869.9407 sq. ft.  
13.6793 acres

**BLOCK "C"**

Area = 232987.32 sq. ft.  
5.35 acres  
RETENTION BASIN  
OWNED AND MAINTAINED BY HOMEOWNERS ASSOCIATION

**#00054**

APPROVED  
LORAIN CO.  
MAP DEPT.

DATE 4-1-98  
PAGE 01 OF 11  
BY [Signature]  
JOB NO. 100054

INTD PLAT

REMAINDER Δ4-ΔΔ-ΔΔ7-15Δ-ΔΔ4 71.56 A.

Δ4-ΔΔ-ΔΔ7-15Δ-ΔΔ1 81.71 A.

Δ4-ΔΔ-Δ18-121-Δ16 3.53 A.

85.24 A.

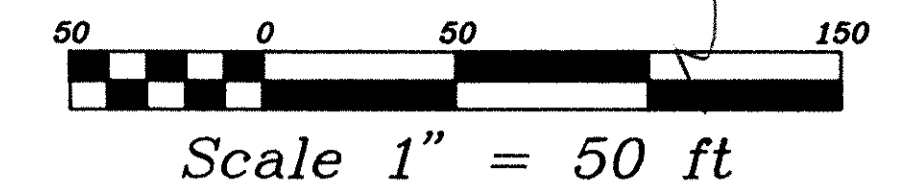
- 13.68 A.

REVISIONS	DATE	DESCRIPTION
1	1-22-98	ADD PINS AND NOTES PER CITY

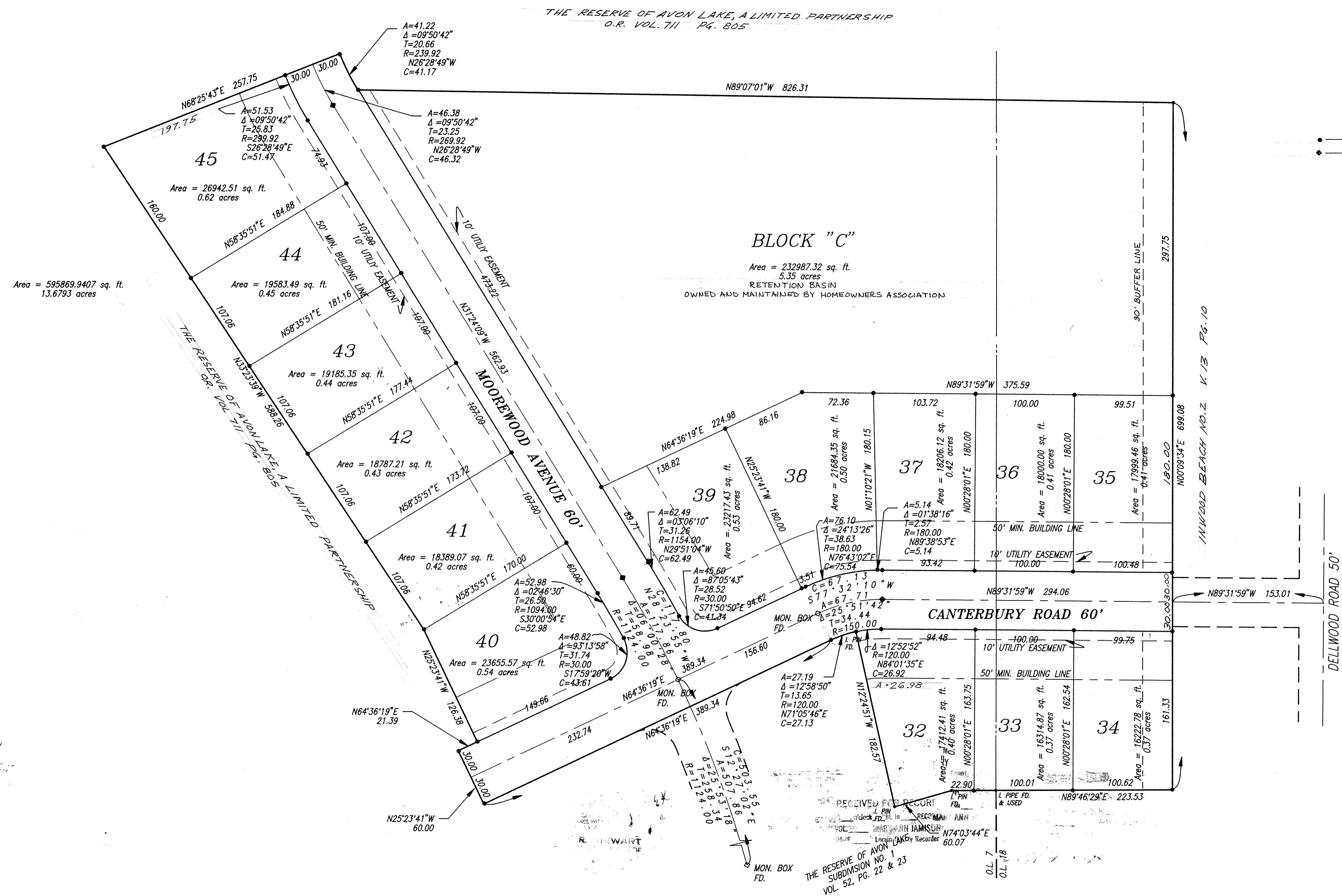
THE RESERVE OF AVON LAKE  
SUBDIVISION NO. 3  
FINAL PLAT

J.A.R. Engineering  
& Surveying, Inc.  
CONSULTING ENGINEERS / SURVEYORS  
24629 DETROIT ROAD WESTLAKE, OHIO 44145  
Phone: (216) 871-8345

3/3  
12/97



— IRON PIN SET  
 — IRON PIN IN MONUMENT SET



REVISIONS	DATE	DESCRIPTION
1	7-22-98	ADD PINS AND NOTES PER CITY.

**THE RESERVE OF AVON LAKE  
 SUBDIVISION NO. 3  
 FINAL PLAT**

**J.A.R. Engineering  
 & Surveying, Inc.**  
 CONSULTING ENGINEERS / SURVEYORS  
 24629 DETROIT ROAD WESTLAKE, OHIO 44145  
 Phone: (216) 871-8345

3  
 3  
 12/97