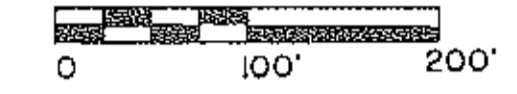


# THE BRUCE PINES SUBDIVISION

BEING PART OF ORIGINAL GRAFTON TOWNSHIP LOT NUMBER 16 NOW IN GRAFTON TOWNSHIP LORAIN COUNTY, OHIO



JUNE, 1997  
 OCT. 1, 1997  
 OCT. 20, 1997  
 NOV. 18, 1997  
 JAN. 28, 1998

JAMES B. ROOT & ASSOCIATES  
 200 ELLEN DR., BEREA, OHIO  
 44017 440-243-9843

NOTE:  
 DRAIN OR DITCH EASEMENTS SHALL BE MAINTAINED BY THE SUBLOTS BENEFITTING THEREFROM.

### ACREAGE SCHEDULE

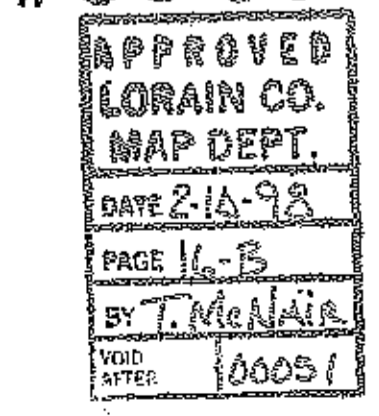
SUBLOT ACREAGE	77.6762
DEDICATED ROAD ACREAGE	1.4332
TOTAL PLAT ACREAGE	79.1094

16-00-005-000-002  
 VIRGIL & COLLEE TOMPKINS  
 VOL. 1326, PG. 646

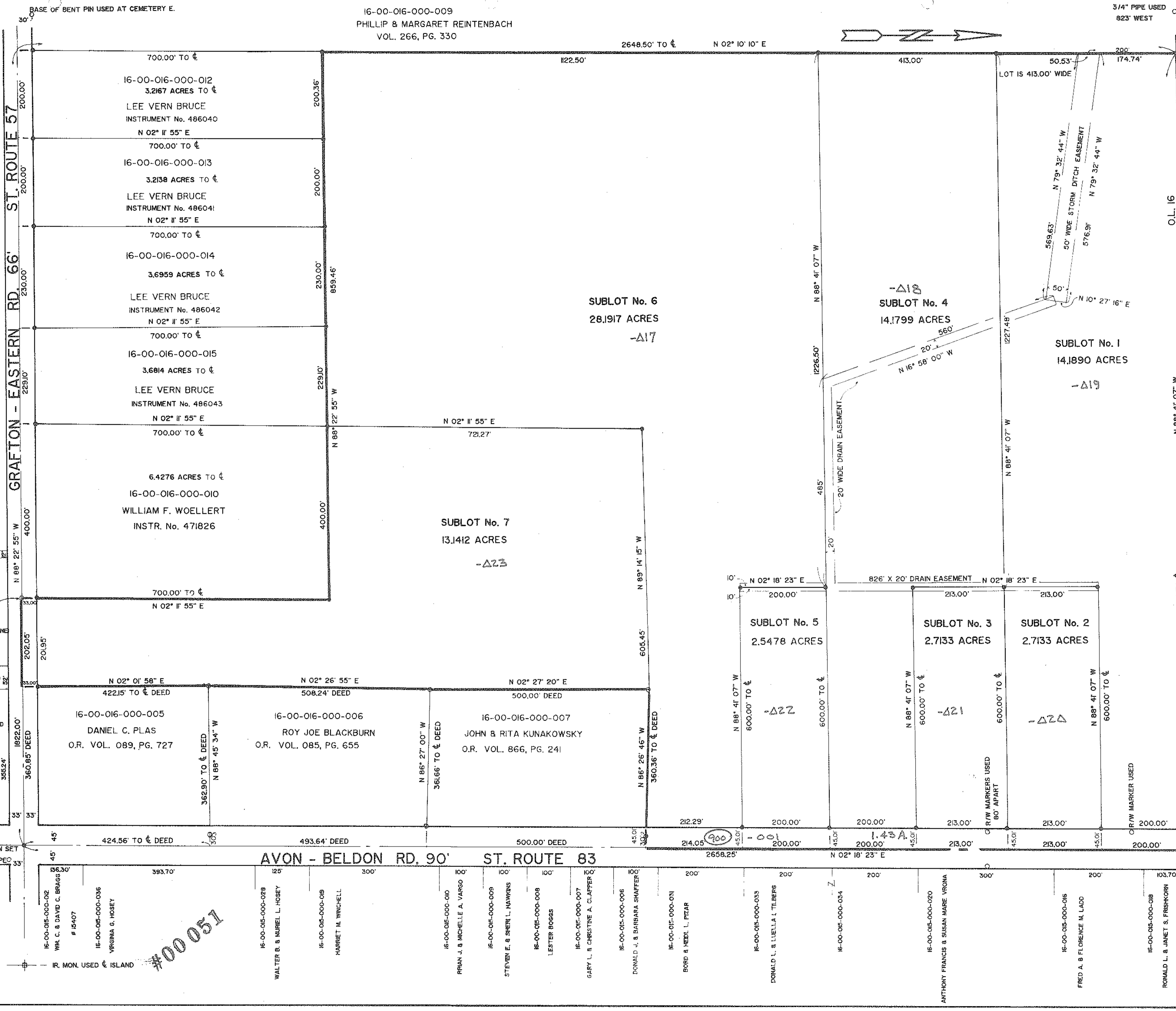
OUT ΔF  
 16-ΔΔ-Δ16-ΔΔΔ-Δ16  
 INTO PLAT

REMAINDER NONE

#00051



60/30+31 60/31



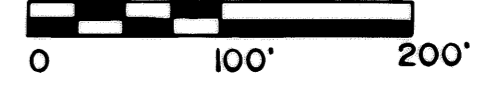
#00051

16-00-016-000-009  
PHILLIP & MARGARET REINTENBACH  
VOL. 266, PG. 330

3/4" PIPE USED  
823' WEST

# THE BRUCE PINES SUBDIVISION

BEING PART OF ORIGINAL GRAFTON  
TOWNSHIP LOT NUMBER 16  
NOW IN GRAFTON TOWNSHIP  
LORAIN COUNTY, OHIO



JUNE, 1997  
OCT. 1, 1997  
OCT. 20, 1997  
NOV. 18, 1997  
JAN. 28, 1998

JAMES B. ROOT & ASSOCIATES  
200 ELLEN DR., BEREA, OHIO  
44017 440-243-9843

NOTE:  
DRAIN OR DITCH EASEMENTS SHALL BE  
MAINTAINED BY THE SUBLOTS BENEFITTING  
THEREFROM.

### ACREAGE SCHEDULE

SUBLLOT ACREAGE	77.6762
DEDICATED ROAD ACREAGE	1.4332
TOTAL PLAT ACREAGE	79.1094

16-00-005-000-002  
VIRGIL & COLLEE TOMPKINS  
VOL. 1326, PG. 646

