

#502453

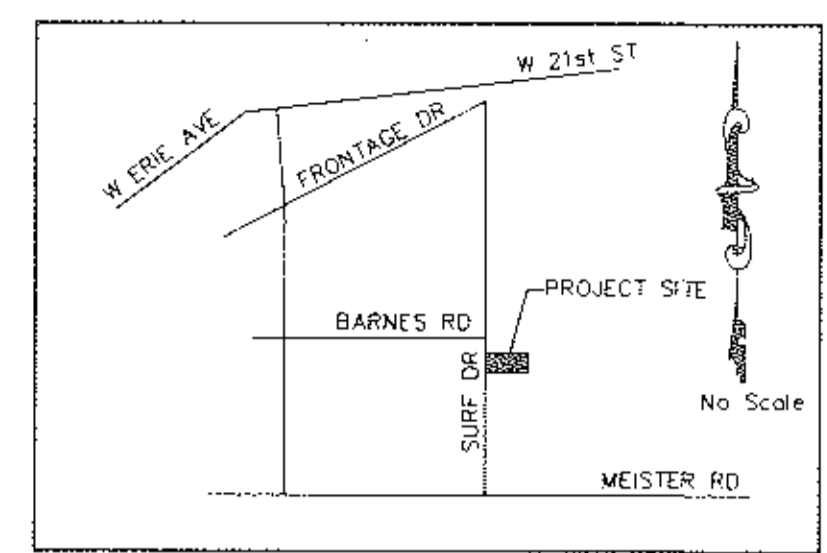
#502453

SURFSIDE CONDOMINIUM

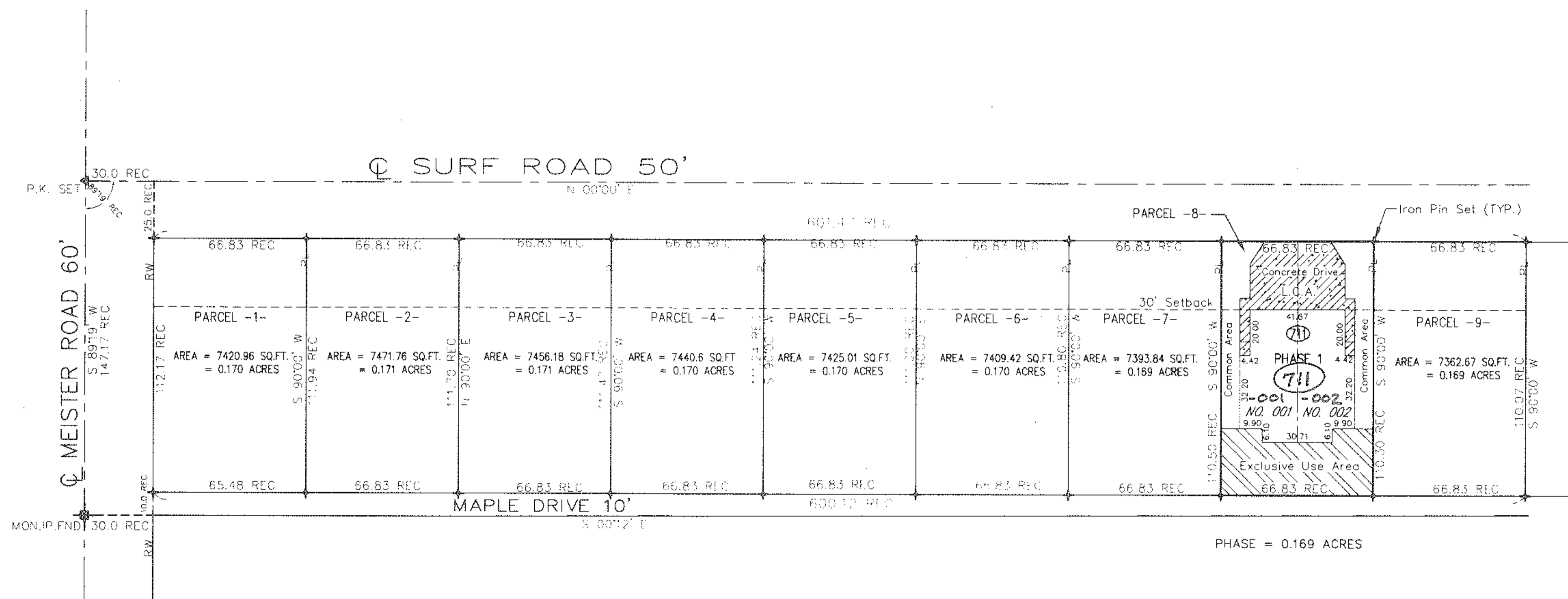
CITY OF LORAIN COUNTY OF LORAIN STATE OF OHIO
PART OF ORIGINAL BLACK RIVER TOWNSHIP LOT No. 21, TRACT 2

PHASE 1

INDEX	
DESCRIPTION	SHEET
SITE PLAN	1
ELEVATION 1	2
ELEVATION 2	3
FIRST FLOOR PLAN	4
SECOND FLOOR PLAN	5

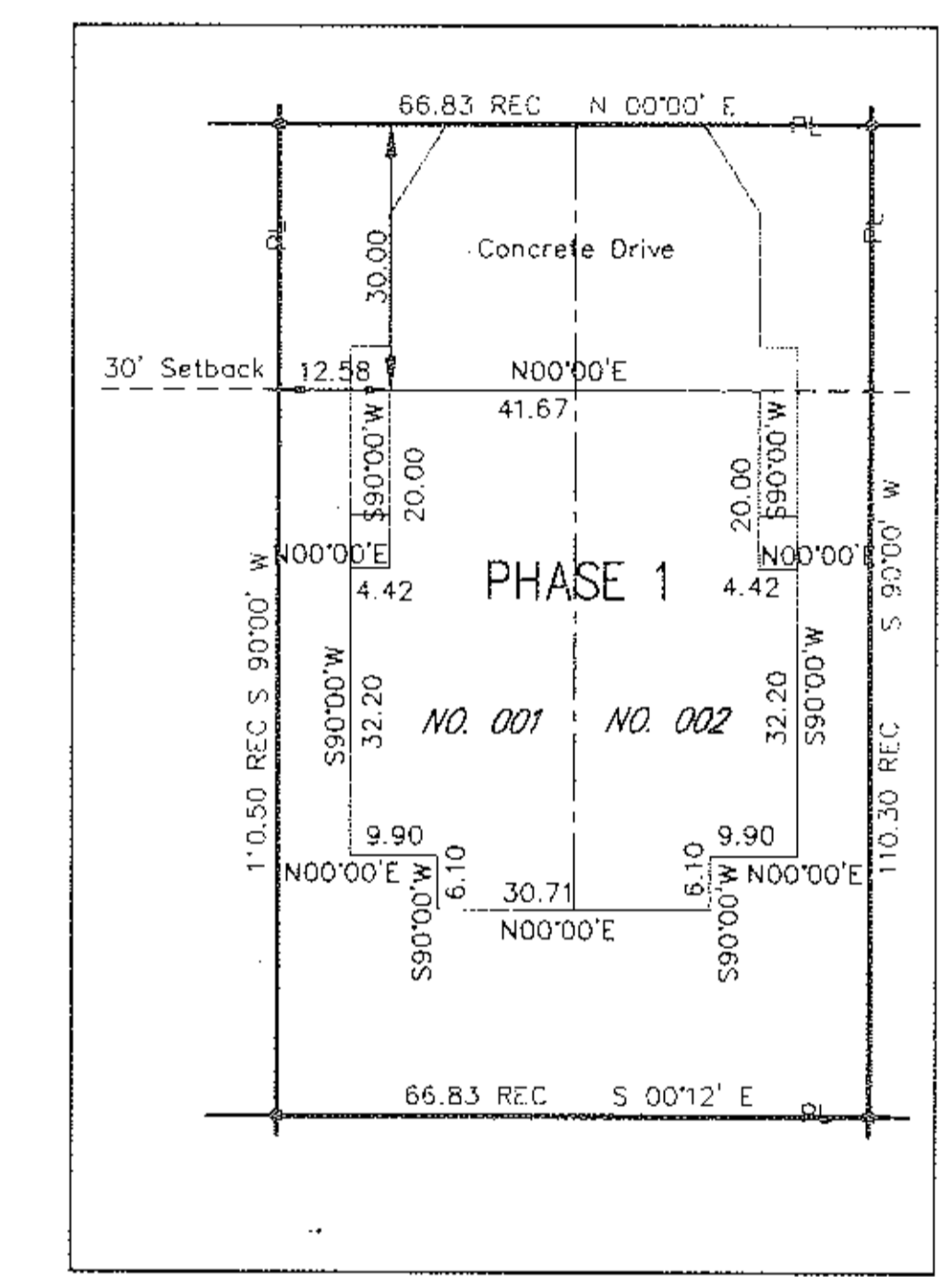


Vicinity Map (not to scale)



PHASE = 0.169 ACRES

PPN 02-02-021-112-014
GUSTAV & ROBIN KRAUSE
DD 1-22-96
VOL 1207, PG 594

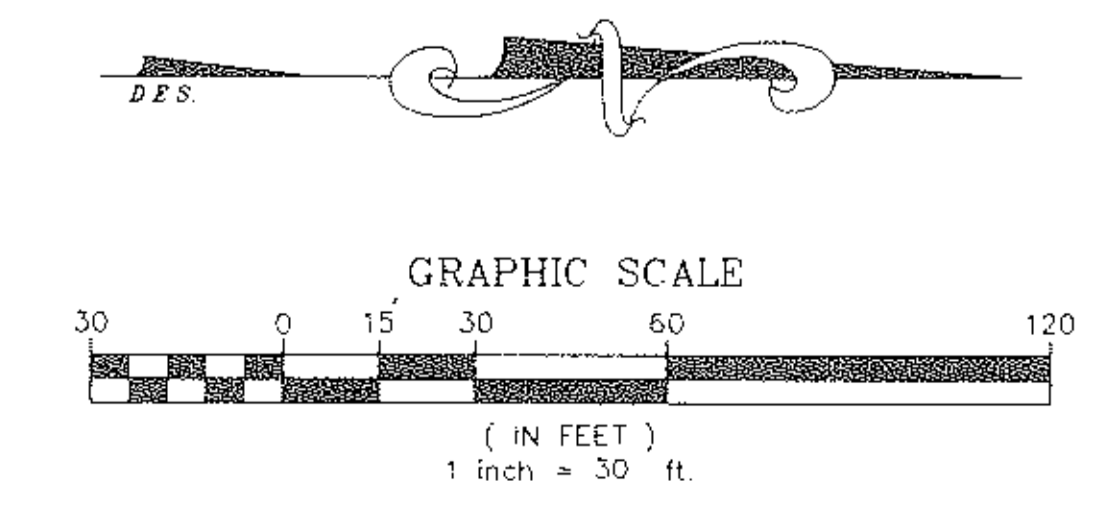


Parcel "8" Detail
Scale 1:20

Δ UT Δ F Δ 2- Δ 2- Δ 21-112- Δ 21 Δ .17 A.
 INTA PLAT Δ .17 A.
 REMAINDER ~~Δ 21~~ NONE

- LIMITED COMMON AREA
- EXCLUSIVE USE AREA
- COMMON AREA

OUT OF 02-02-021-112-021 0.17 ACRE
 INTO PLAT 0.17 ACRE
 REMAINDER 0.00 ACRE



RECEIVED FOR RECORD
 14, 15, 16, 17 and 18 line
 BY MARY ANN JAMISON
 REGISTRAR
 11-10-97

I have reviewed the information contained herein and hereby certify that based upon my review of this information and supervision of the field personnel responsible, the drawings contained herein accurately depict the Surfside Condominiums Phase I as presented upon Pages 1 through 5.

Mark A. Smoley, PE
 Date 11-10-97

#00038



60/14-18

BKJ BEMBA K. JONES & ASSOCIATES, INC.
 CIVIL ENGINEERS AND LAND SURVEYORS
 3368 EAST 113 TH. STREET CLEVELAND, OHIO 44104
 OFFICE: (216) 751-4669 FAX: (216) 751-8258

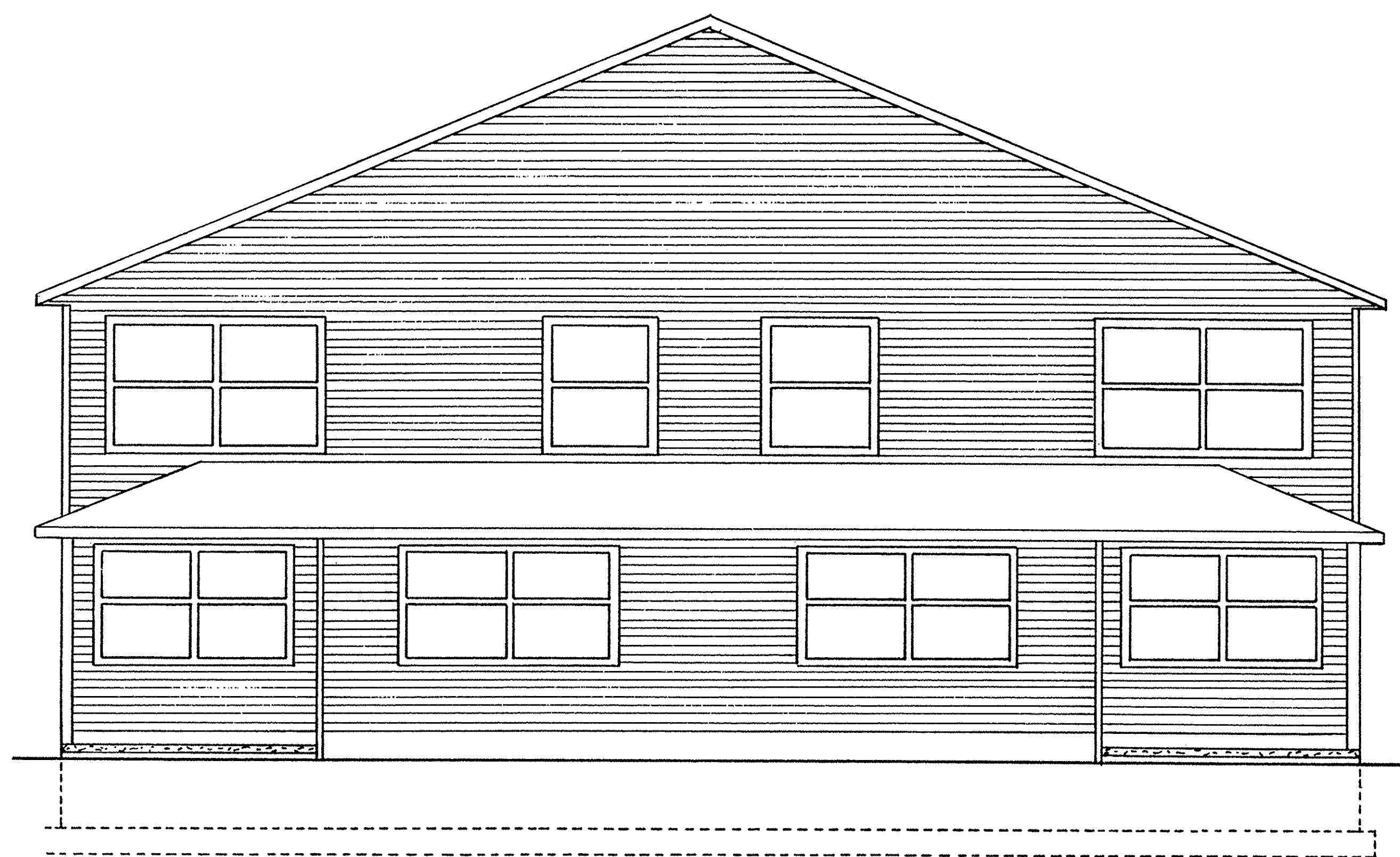
JOB NO. 6-95-142	DATE OCT. 1, 1997	SCALE 1"=30'	SHT. NO. 1 OF 5
---------------------	----------------------	-----------------	--------------------

c:\img\Bemba K. Jones 05-95-142-095142 Rev Nov 10 13:24:00 1997 D E S.

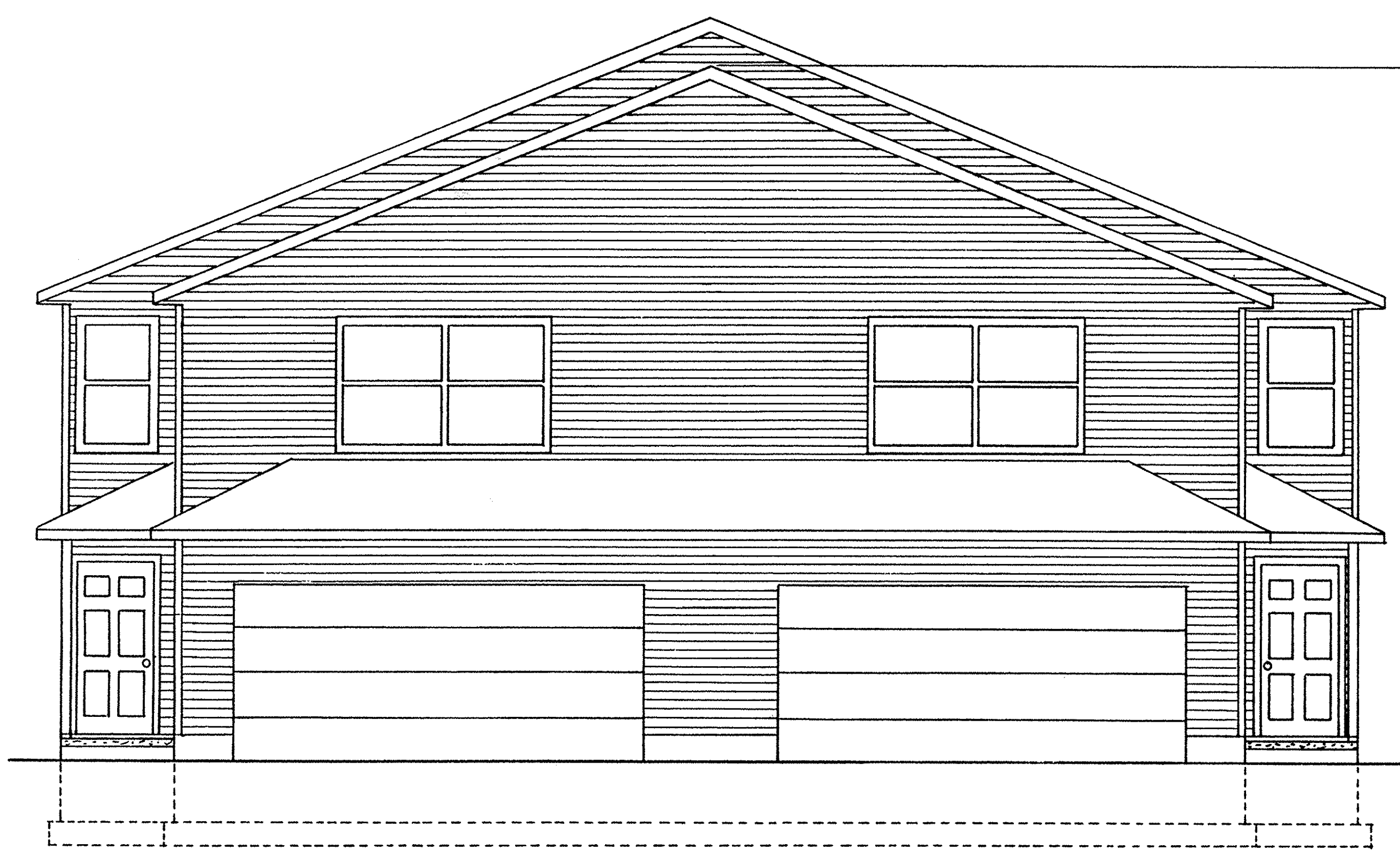
502453

SURFSIDE CONDOMINIUMS Phase 1

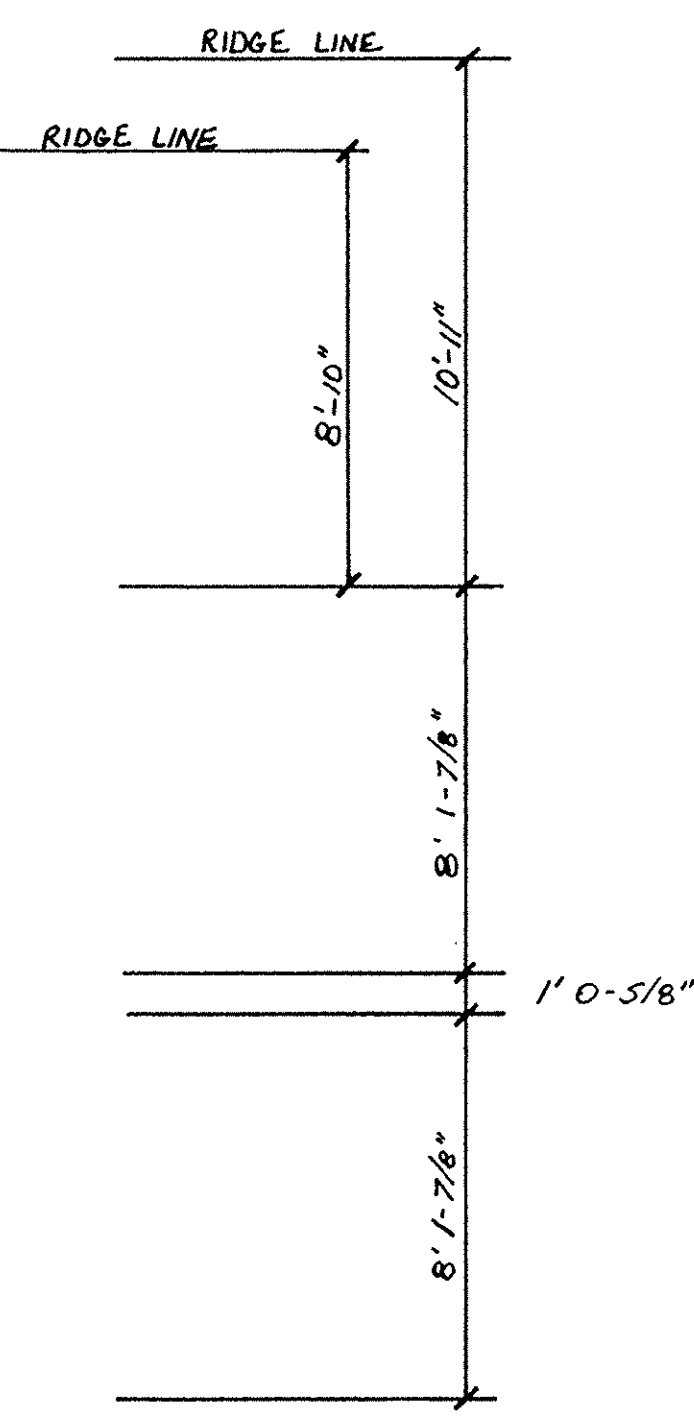
#502453



Rear



Front

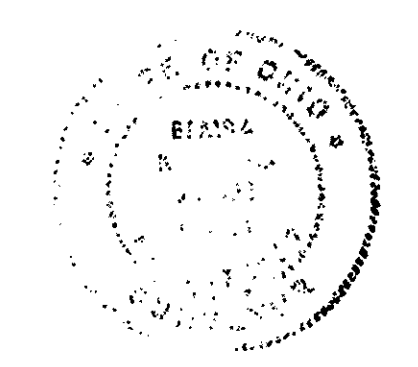


I have reviewed the information contained herein and hereby certify that based upon my review of this information and supervision of the field personnel responsible, the drawings contained herein accurately depict the Surfside Condominiums Phase 1 as presented upon Pages 1 through 5.

[Signature] 10-6-97
Mark A. Smoley, PE Date



Bemba K. Jones Registered Surveyor hereby certifies that the drawings for Surfside Condominiums Phase 1 consisting of Pages 1 through 5 accurately show the buildings as constructed.
[Signature] 10/10/97
Bemba K. Jones, P.S. No. 7343 Date



SURFSIDE CONDOMINIUMS

SCALE: 1/4" = 1' APPROVED BY DATE: 9/3/97 DRAWN BY: J. Kasper

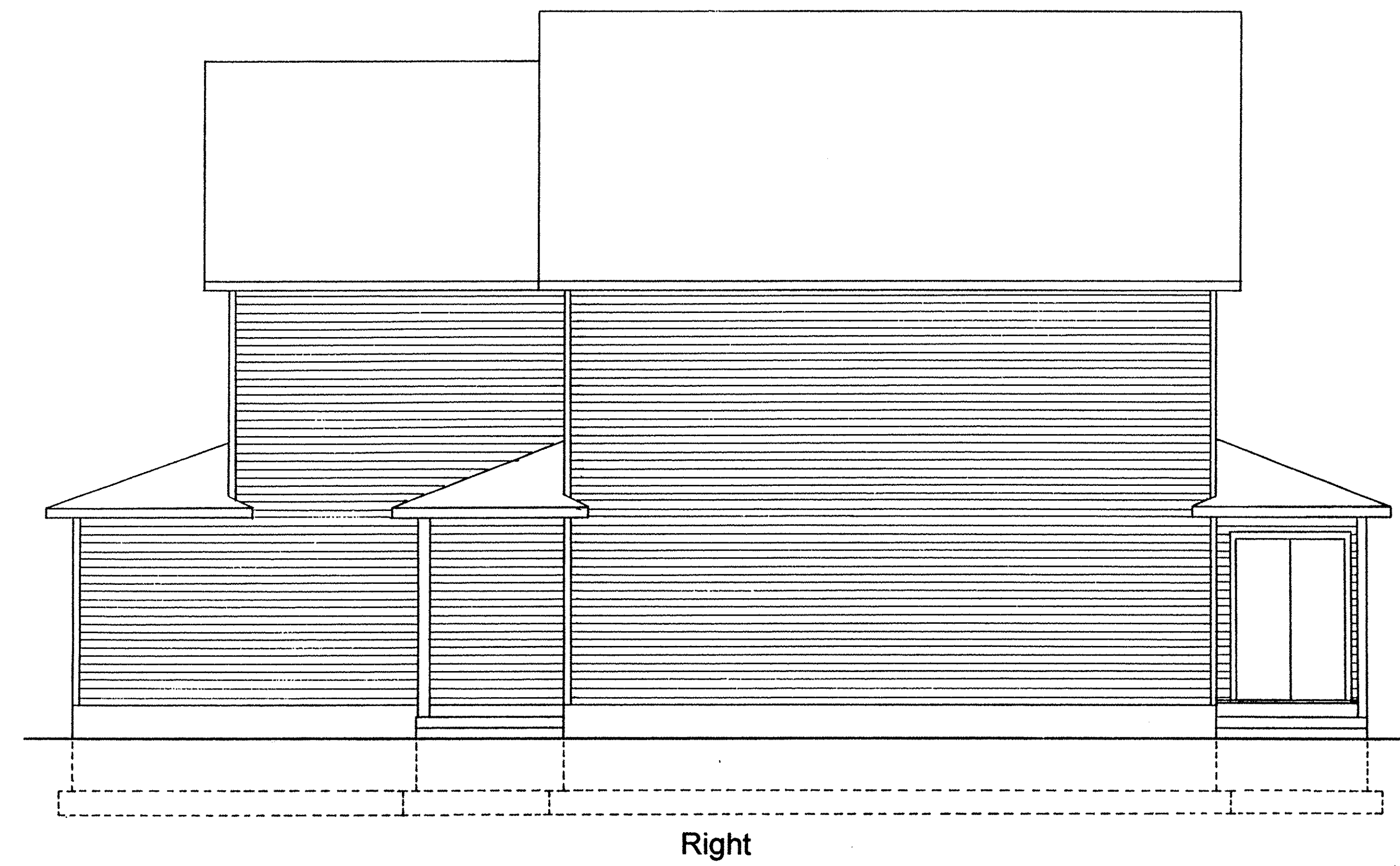
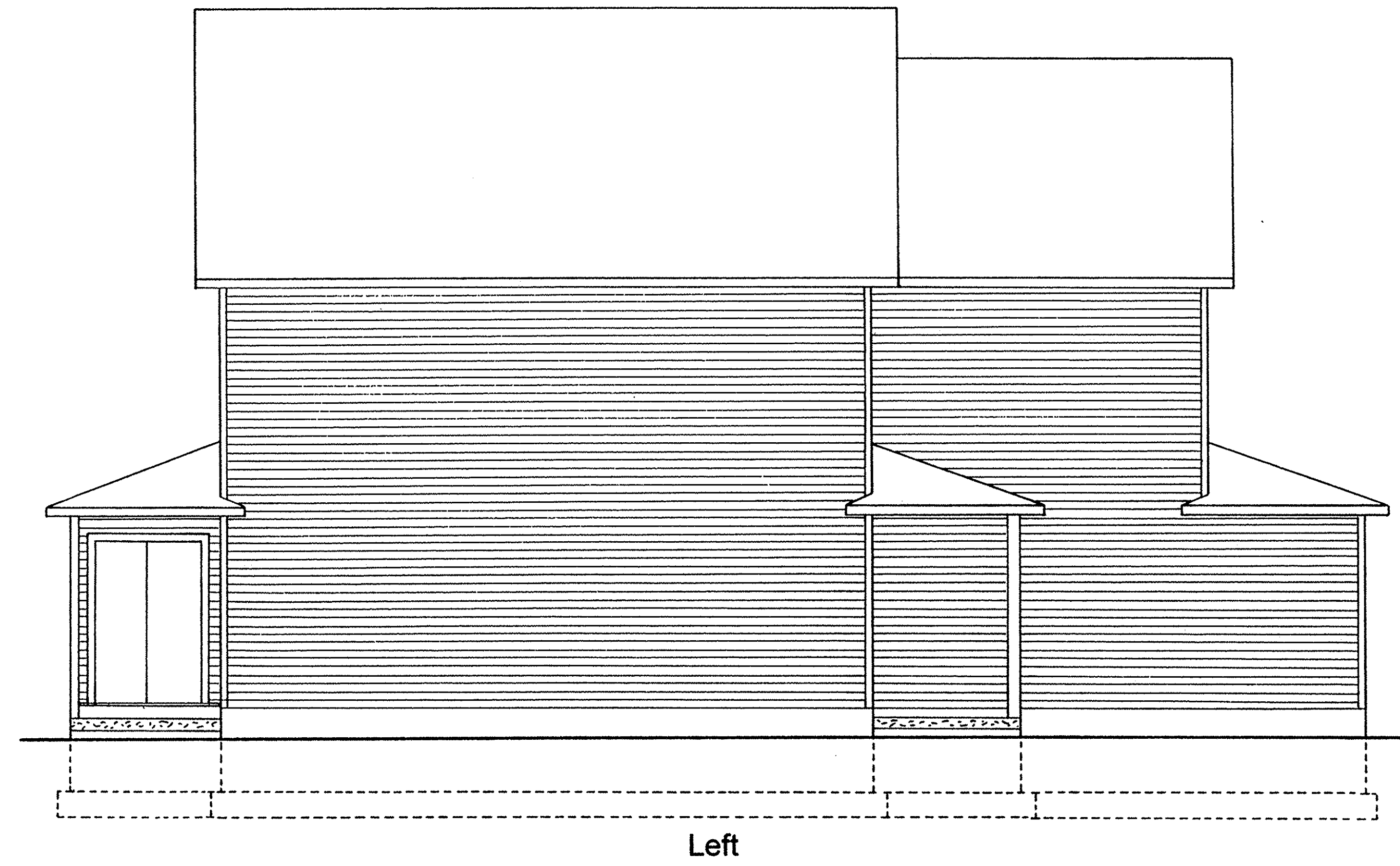
Elevation

DRAWING NUMBER SHEET 2 OF 5

502 453

SURFSIDE CONDOMINIUMS Phase 1

502 453



Bemba K. Jones Registered Surveyor
 hereby certifies that the drawings for
 Surfside Condominiums Phase 1
 consisting of Pages 1 through 5
 accurately show the buildings as constructed

Bemba K. Jones 10/4/97
 Bemba K. Jones, P.S. No. 7343 Date



I have reviewed the information contained herein and hereby certify that based upon my review of this information and supervision of the field personnel responsible, the drawings contained herein accurately depict the Surfside Condominiums Phase I as presented upon Pages 1 through 5.

Mark A. Smoley 10-6-97
 Mark A. Smoley, PE Date

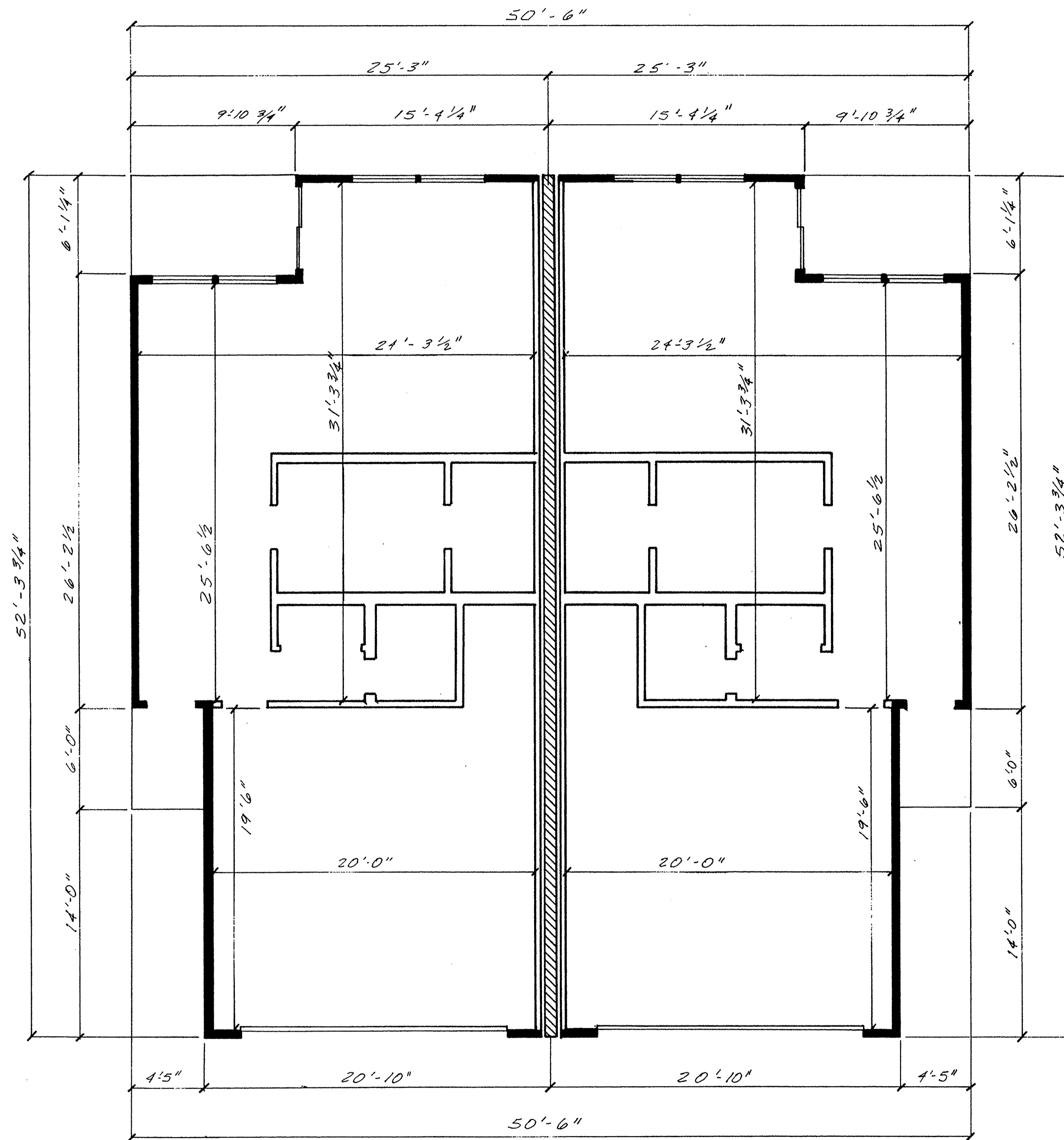


SURFSIDE CONDOMINIUMS		
SCALE: 1/4" = 1'	APPROVED BY	DRAWN BY
DATE: 9/3/97		<i>J. King</i>
Elevation		
		DRAWING NUMBER
		SHEET 3 of 5

#502453

SURFSIDE CONDOMINIUMS Phase 1

#502453



Bemba K. Jones Registered Surveyor
 hereby certifies that the drawings for
 Surfside Condominiums Phase I
 consisting of Pages 1 through 5
 accurately show the buildings as constructed

Bemba K. Jones 10/4/97
 Bemba K. Jones, P.S. No. 7343 Date



Legend

- 3-1/2" interior stud wall
- 4" exterior stud wall
- 8" block common wall

I have reviewed the information contained herein and hereby certify that based upon my review of this information and supervision of the field personnel responsible, the drawings contained herein accurately depict the Surfside Condominiums Phase I as presented upon Pages 1 through 5.

Mark A. Smoley 10-6-97
 Mark A. Smoley, PE Date



SURFSIDE CONDOMINIUMS

SCALE: 1/4" = 1' APPROVED BY: *[Signature]* DRAWN BY: *[Signature]*
 DATE: 9/3/97

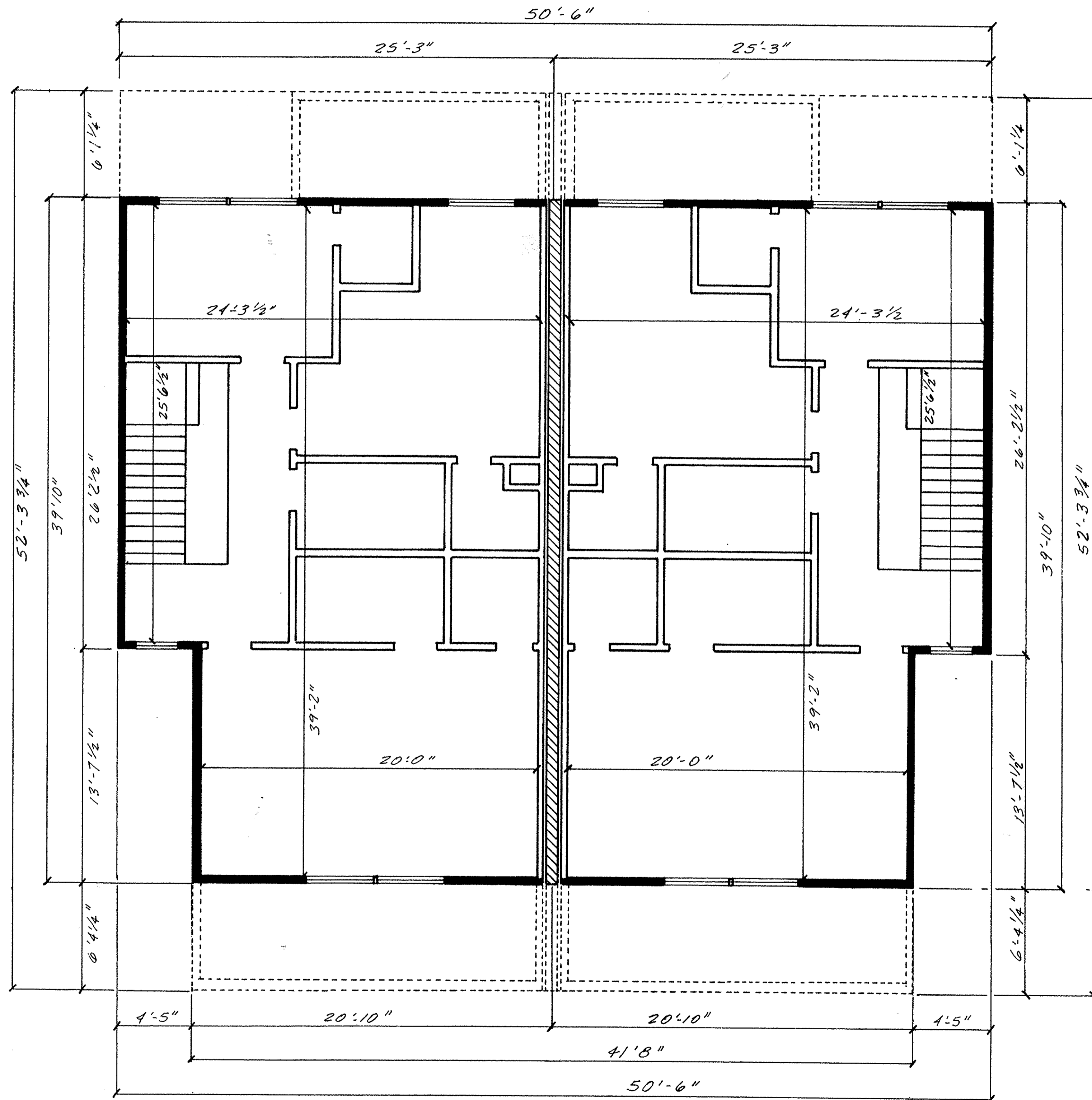
First Floor

DRAWING NUMBER
SHEET 4 OF 5

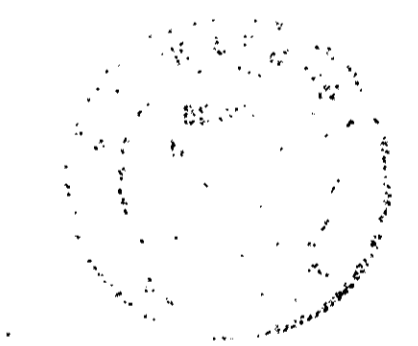
#502453

SURFSIDE CONDOMINIUMS Phase 1

#502453



Bemba K. Jones Registered Surveyor
 hereby certifies that the drawings for
 Surfside Condominiums Phase I
 consisting of Pages 1 through 5
 accurately show the buildings as constructed
Bemba K. Jones 10/9/97
 Bemba K. Jones, P.S. No. 7343 Date



I have reviewed the information contained herein and hereby certify that based upon my review of this information and supervision of the field personnel responsible, the drawings contained herein accurately depict the Surfside Condominiums Phase I as presented upon Pages 1 through 5.



Mark A. Smoley 10-6-97
 Mark A. Smoley, PE Date

Legend

- 3-1/2" interior stud wall
- 4" exterior stud wall
- 8" block common stud wall

SURFSIDE CONDOMINIUMS

SCALE: 1/4" = 1'	APPROVED BY	DRAWN BY
DATE: 9-3-97	<i>J. Kingan</i>	<i>J. Kingan</i>
Second Floor		
DRAWING NUMBER		SHEET 5 OF 5