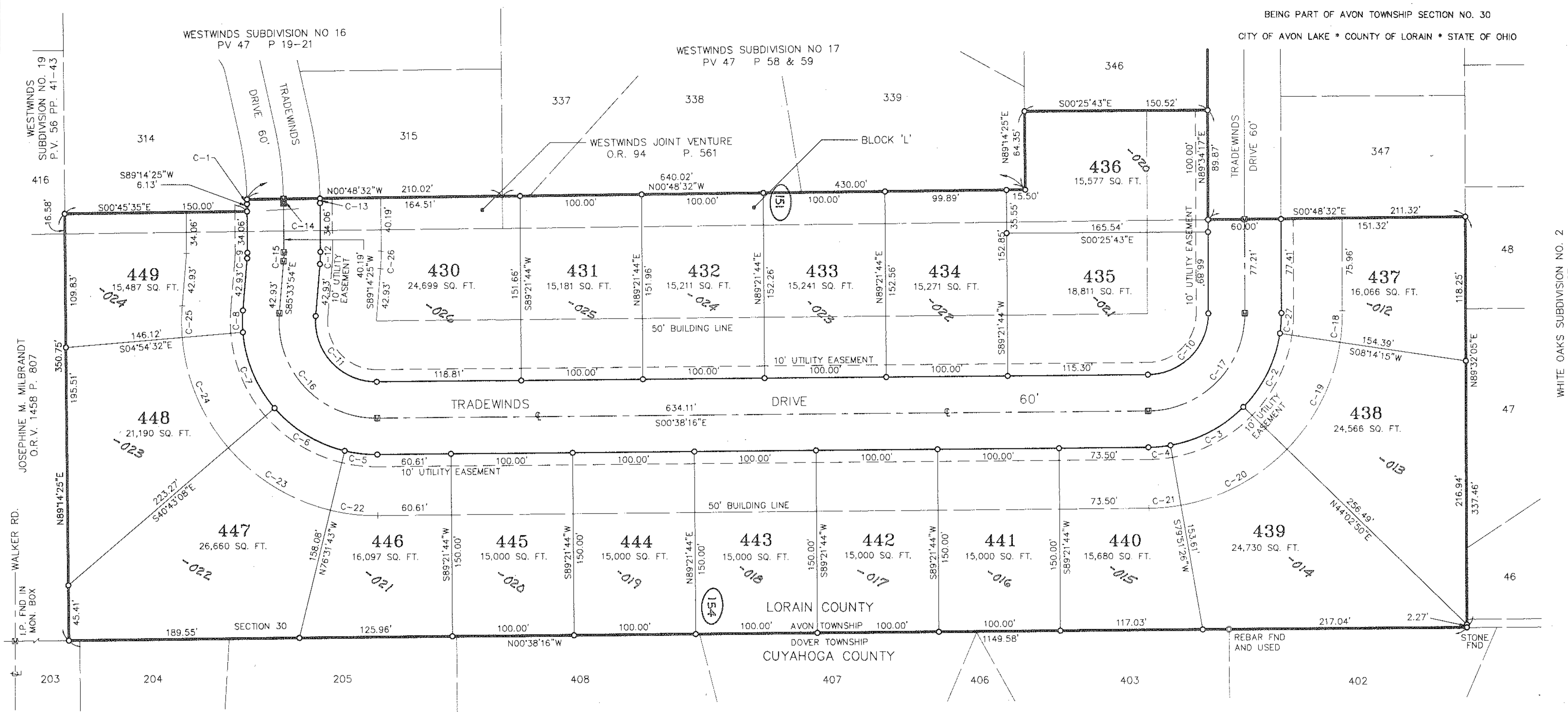


WESTWINDS SUBDIVISION NO. 20

BEING PART OF AVON TOWNSHIP SECTION NO. 30
CITY OF AVON LAKE * COUNTY OF LORAIN * STATE OF OHIO



HUNTINGTON WOODS SUBDIVISION No. 3
PV 209 P 62

HUNTINGTON WOODS SUBDIVISION No. 5 P.V. 222 P. 23

CURVE	RADIUS	LENGTH	TANGENT	CHORD	BEARING	DELTA
C-1	270.00'	3.79'	1.90'	3.79'	N88°50'18"E	00°48'13"
C-2	110.00'	68.75'	35.54'	67.64'	N63°51'28"W	35°48'36"
C-3	110.00'	68.75'	35.54'	67.64'	S28°02'52"E	35°48'36"
C-4	110.00'	18.25'	9.15'	18.23'	S05°23'25"E	09°30'19"
C-5	110.00'	27.09'	13.61'	27.02'	N06°25'01"E	14°06'33"
C-6	110.00'	68.75'	35.54'	67.64'	S31°22'35"W	35°48'36"
C-7	110.00'	68.75'	35.54'	67.64'	S67°11'10"W	35°48'36"
C-8	110.00'	17.94'	8.99'	17.92'	N89°45'47"E	09°20'38"
C-9	50.00'	4.53'	2.27'	4.53'	S88°09'45"E	05°11'41"
C-10	50.00'	78.36'	49.82'	70.58'	S45°31'59"E	89°47'27"
C-11	50.00'	82.97'	54.83'	73.77'	S46°53'55"W	95°04'22"
C-12	110.00'	9.97'	4.99'	9.97'	N88°09'45"W	05°11'41"
C-13	330.00'	3.84'	1.92'	3.84'	N88°54'24"E	00°40'01"
C-14	300.00'	3.82'	1.91'	3.82'	S88°52'33"W	00°43'43"
C-15	80.00'	7.25'	3.63'	7.25'	N88°09'45"W	05°11'41"
C-16	80.00'	132.75'	87.42'	118.03'	N46°53'55"E	95°04'22"
C-17	80.00'	125.37'	79.71'	112.93'	N45°31'59"W	89°47'27"
C-18	160.00'	24.20'	12.12'	24.18'	N86°08'44"W	08°39'58"
C-19	160.00'	100.00'	51.69'	98.38'	S63°51'28"E	35°48'36"
C-20	160.00'	100.00'	51.69'	98.38'	S28°02'52"E	35°48'36"
C-21	160.00'	26.54'	13.30'	26.51'	N05°23'25"W	09°30'19"
C-22	160.00'	39.40'	19.80'	39.30'	S06°25'01"W	14°06'33"
C-23	160.00'	100.00'	51.69'	98.38'	S31°22'35"W	35°48'36"
C-24	160.00'	100.00'	51.69'	98.38'	N67°11'10"E	35°48'36"
C-25	160.00'	26.09'	13.08'	26.06'	N89°45'47"E	09°20'38"
C-26	160.00'	14.51'	7.26'	14.50'	S88°09'45"E	05°11'41"
C-27	110.00'	16.64'	8.33'	16.62'	N86°05'44"W	08°39'58"

PHASE 20 ACREAGE
AREA IN SUBLOTS 8.1604 Ac.
AREA IN R/W 1.4654 Ac.
TOTAL: 9.6258 Ac.

Δ OUT ΔF: Δ4-ΔΔ-Δ3Δ-142-146 3.Δ3 A.
147 8.87 A.
151-ΔΔ5 Δ.57 A.
INTΔ PLAT - 9.63 A.
REMAINDER Δ4-ΔΔ-Δ3Δ-153-Δ26 2.84 A.

#00029

DATE: JULY 1997	REVISIONS
DRAWN BY: MAH	
CH'D BY: DLE	
F.B.	
DWG. NAME: 20FPLAT2.DWG	
XREF(S):	
6.11.97	ORIGINAL ISSUE DATE

WESTWINDS SUBDIVISION NO. 20
JUL 11 1997
City of Avon Lake, Ohio

KS ASSOCIATES, INC.
ENGINEERS/SURVEYORS
424 Middle Avenue
PO Box 89
Elyria, Ohio 44036
PHONE: (216) 322-6317 * FAX: (216) 284-0623

APPROVED LORAIN CO. MAP DEPT.
DATE 9-30-97
PAGE 4 OF 130 H
BY [Signature]
WORD AFTER 00029

GRAPHIC SCALE
(IN FEET)
1 inch = 40 ft.

SHEET 2 OF 2
JOB NO. 7815-20

