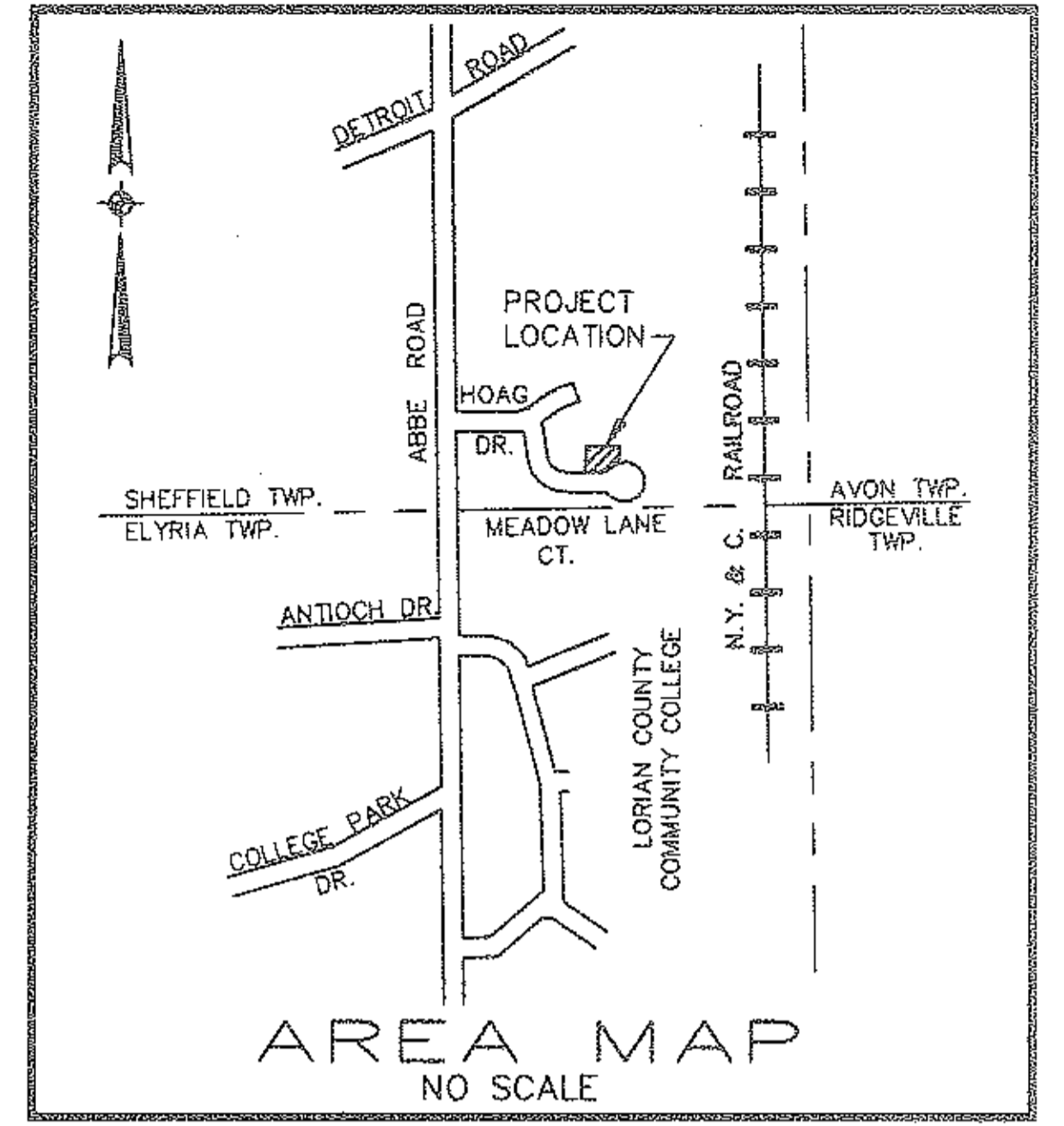


#447177

UNIT NO.	SQ. FT.	FIRST FLR. ELEV.	SECOND FLR. ELEV	OWNERSHIP PERCENTAGE
1	1374	686.60	697.27	5.742
2	1374	686.60	697.27	5.742
3	1374	686.60	697.27	5.742
4	1374	686.60	697.27	5.742
5	960	688.43	---	4.012
6	960	688.43	---	4.012
7	2693	688.43	---	11.253
8	1120	688.43	---	4.680
9	1336	688.43	---	5.583
10	1197	688.43	---	5.002
11	960	688.43	---	4.012
12	1080	688.85	---	4.513
13	1080	688.85	---	4.513
14	1195	688.85	---	4.994
15	1241	688.85	---	5.186
16	1336	688.85	---	5.583
17	1120	688.85	---	4.680
18	1197	688.85	---	5.002
19	960	688.85	---	4.012
TOTAL	23,931			100.00



ABBE ROAD

HOAG  
S 89°23'44" E  
353.66'  
P.V. 47 P. 18

DRIVE

Δ = 36°09'22"  
R = 255.00'  
L = 160.91'  
C = 158.26'  
CB = N 72°31'37" E

Δ = 16°05'00"  
R = 230.96'  
L = 64.83'  
C = 64.63'  
CB = S 43°35'24" E

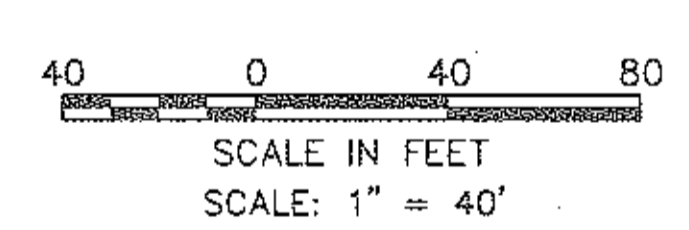
Δ = 8°25'46"  
R = 135.00'  
L = 19.86'  
C = 19.84'  
CB = S 5°15'37" E

Δ = 50°35'18"  
R = 105.00'  
L = 92.71"  
C = 89.73"  
CB = S 26°20'23" E

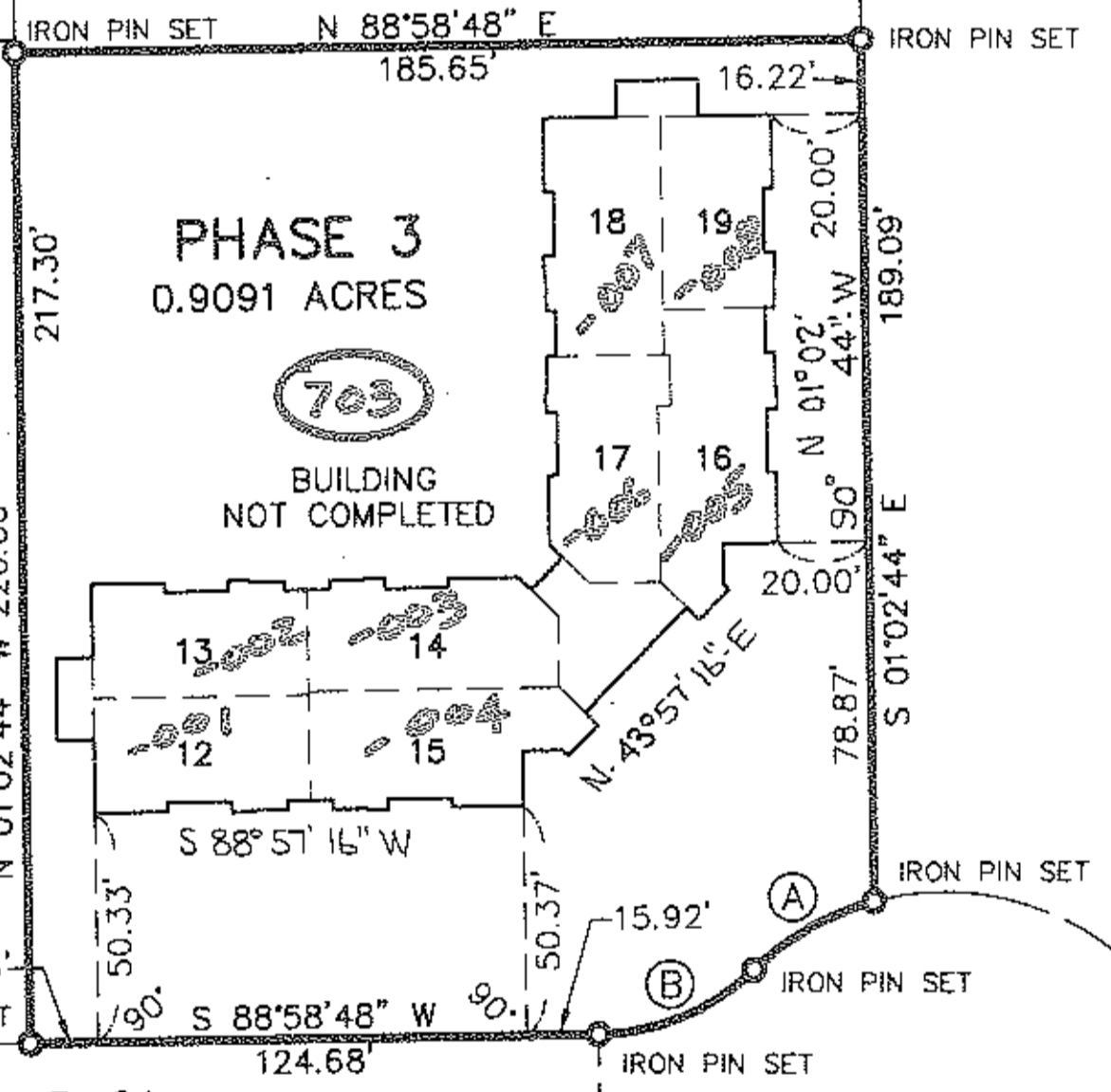
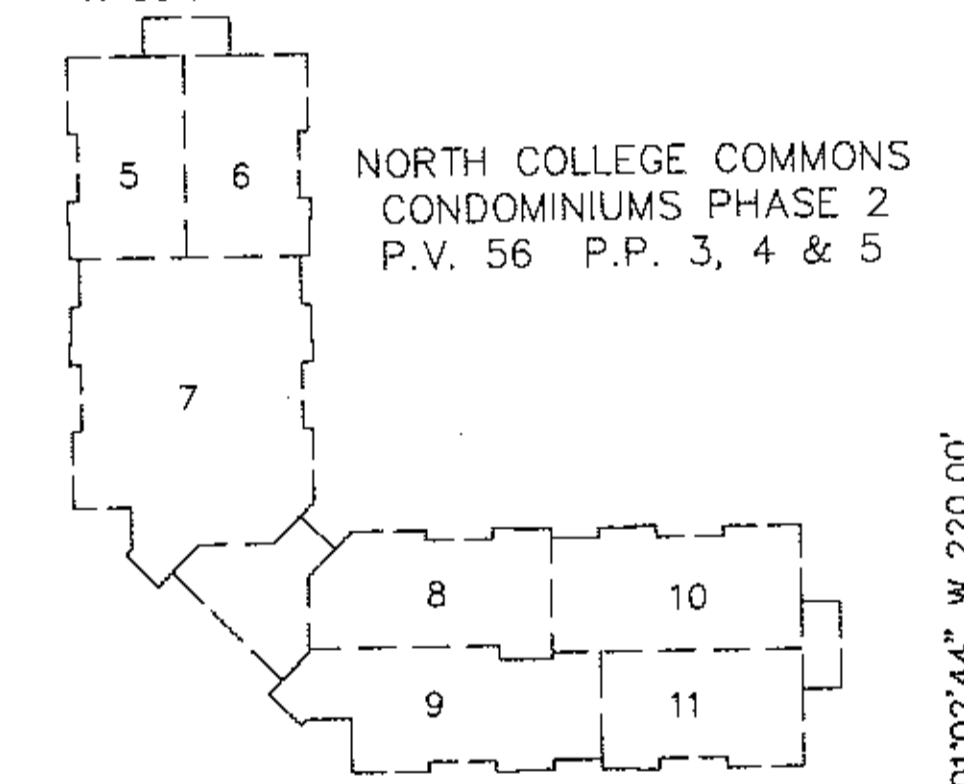
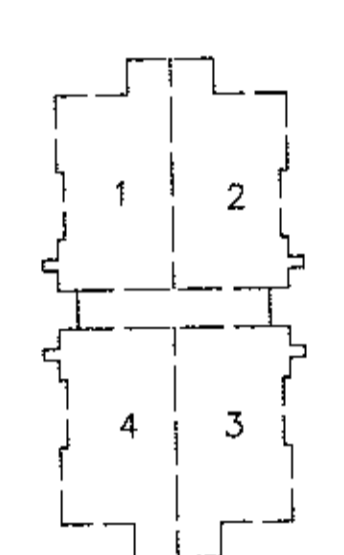
ΔUTΔF Δ3-ΔΔ-ΔΔ1-ΔΔΔ-111 1.60A.  
INTA PLAT Δ.91A.  
REMAINDER Δ3-ΔΔ-ΔΔ1-ΔΔΔ-117 Δ.69A.

#22044

APPROVED  
LORAIN CO.  
MAP DEPT.  
DATE 1-17-97  
PAGE 30000A  
BY [Signature]  
NWD AFTER 22044



MEADOW LANE COURT

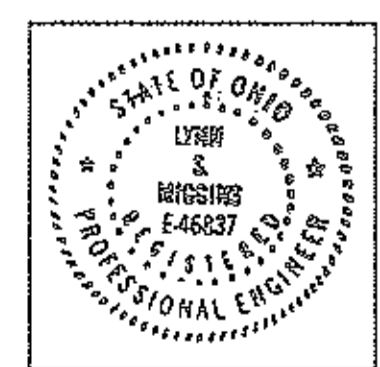


ELYRIA UNITED METHODIST VILLAGE  
O.R.V. 1207 P. 105

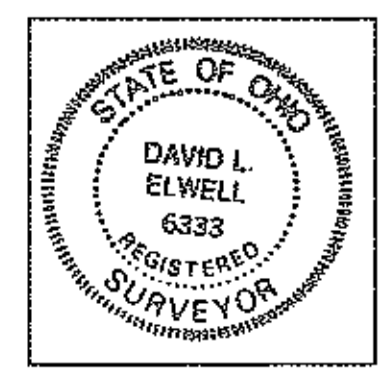
CERTIFICATION

THIS IS TO CERTIFY THAT THE ATTACHED DRAWINGS CORRECTLY REPRESENT THE BUILDINGS AS CONSTRUCTED AND THAT THERE ARE NO ENCROACHMENTS ON ADJACENT PROPERTIES

*Lynn S. Miggin*  
LYNN S. MIGGIN  
REGISTERED ENGINEER NO. 46837



*David L. Elwell*  
DAVID L. ELWELL  
REGISTERED SURVEYOR NO. 6333



#22044

Δ = 89°58'28"  
R = 130.00'  
L = 204.15'  
C = 183.81'  
CB = N 46°01'58" E

JAN 17 1997  
RECEIVED FOR RECORD  
at 9:58 a.m. in 202 RECORD  
VOL. 58 MARY ANN JAMISON  
PAGE 5 Lorain County Recorder  
32 97 + 58 MC

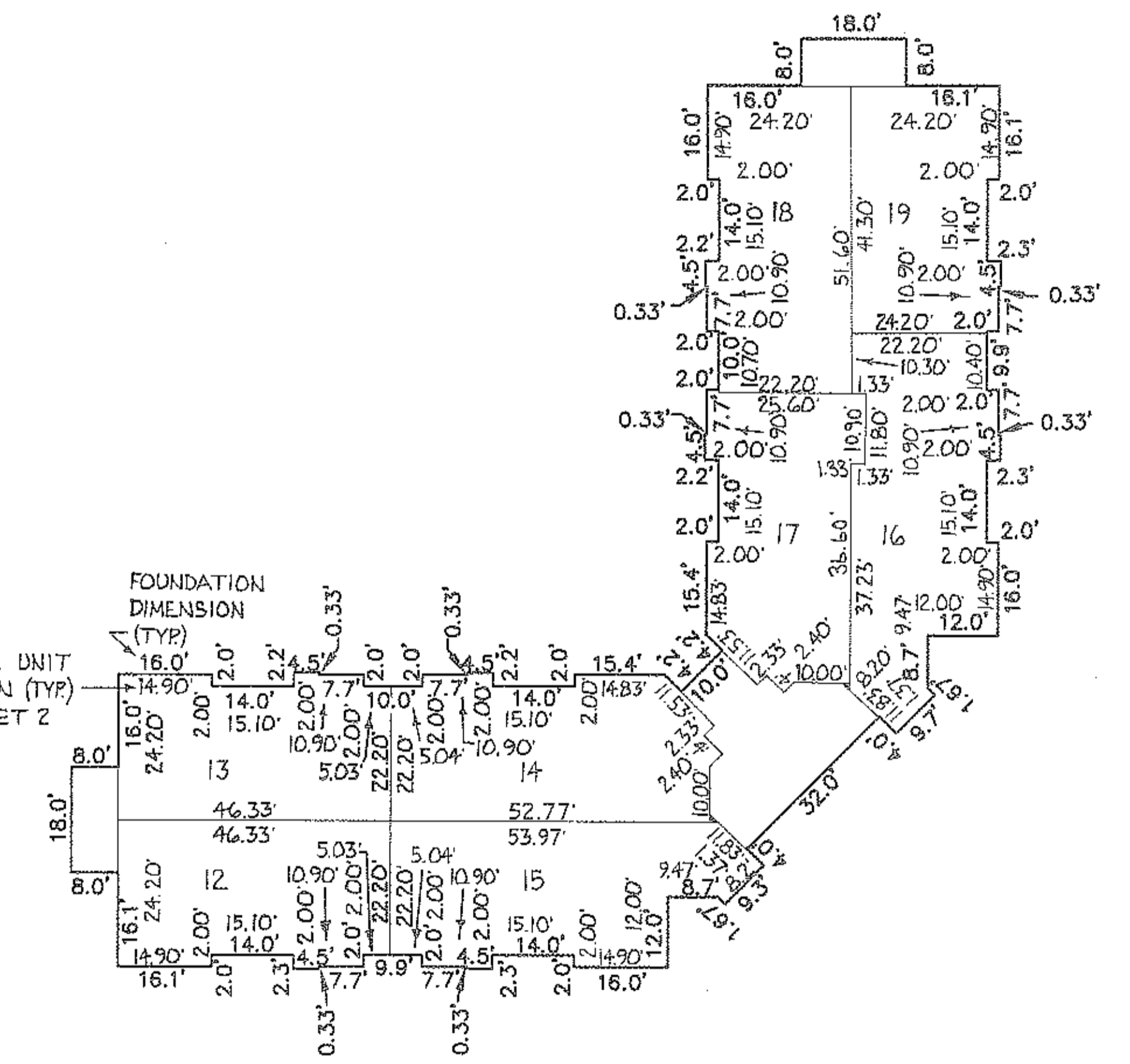
Ⓐ Δ = 29°19'03"  
R = 60.00'  
L = 30.70'  
C = 30.36'  
CB = S 60°17'47" W

Ⓑ Δ = 43°20'30"  
R = 50.00'  
L = 37.82'  
C = 36.93'  
CB = S 67°18'32" W

FOUNDATION DIMENSION (TYP)  
INTERIOR UNIT DIMENSION (TYP)  
SEE SHEET 2

TRANSFERRED  
COUNTIES WITH SEC. 316.01  
OHIO REV. CODE  
JAN 17 1997  
MARK R. STEWAR  
LORAIN COUNTY AUDITOR

FOUNDATION PLAN  
SCALE: 1" = 20'



SHEET NO.	DESCRIPTION
1	SURVEY MAP, FOUNDATION PLAN AREA MAP & MISC.
2	FLOOR PLAN
3	EXTERIOR ELEVATIONS

58/36-38

DATE	REVISIONS
1-09-97	ORIGINAL ISSUE

NORTH COLLEGE COMMONS CONDOMINIUMS  
PHASE NO. 3  
OF PART OF  
SHEFFIELD TOWNSHIP ORIGINAL LOT NO. 1  
VILLAGE OF SHEFFIELD COUNTY OF LORAIN STATE OF OHIO

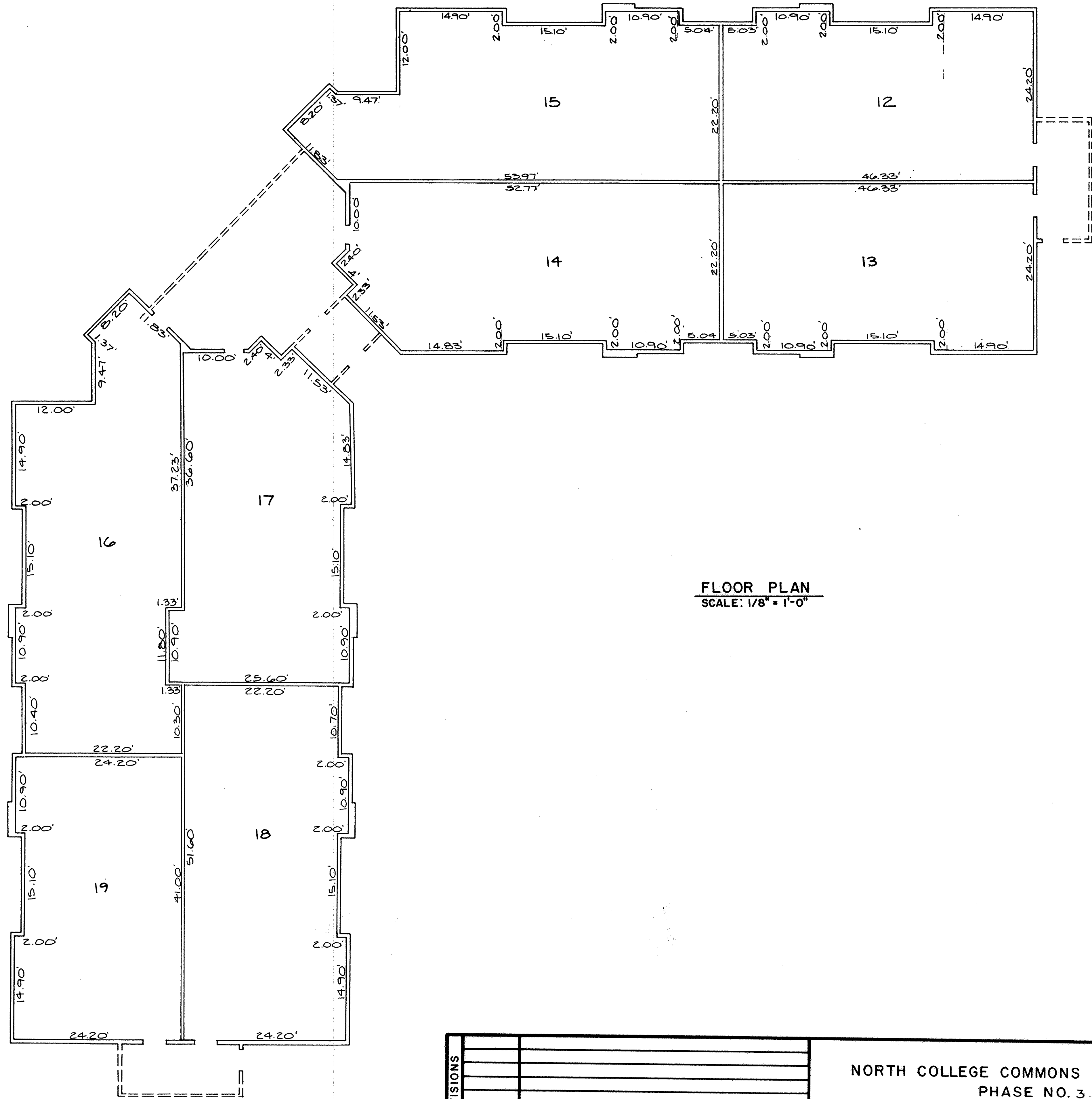
KS ASSOCIATES, INC.  
ENGINEERS/SURVEYORS  
424 Middle Avenue  
P.O. Box 89  
Elyria, Ohio 44036  
ELYRIA (216) 322-6317 \* LORAIN (216) 244-5757



SHEET 1 OF 3  
JOB NO. 89175-CP3

447170

447170



FLOOR PLAN  
SCALE: 1/8" = 1'-0"

REVISIONS		

NORTH COLLEGE COMMONS CONDOMINIUMS  
PHASE NO. 3  
FLOOR PLAN

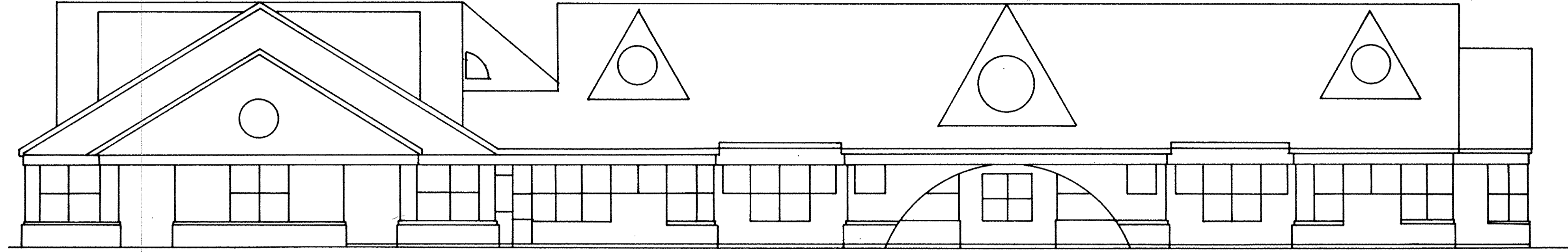
**KS ASSOCIATES, INC.**  
ENGINEERS/SURVEYORS  
424 Middle Avenue  
P.O. Box 89  
Elyria, Ohio 44036  
Elyria (216) 322-6317 • Lorain (216) 244-5757



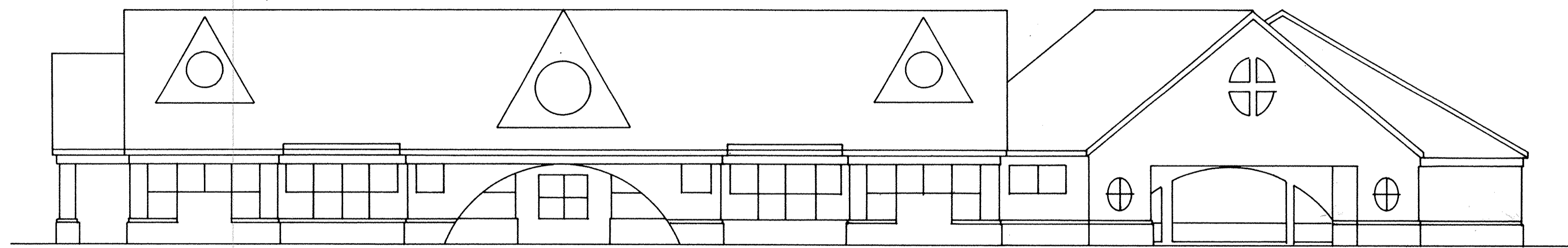
SHEET  
2 OF  
3  
JOB NO.  
89175-CP3

447170

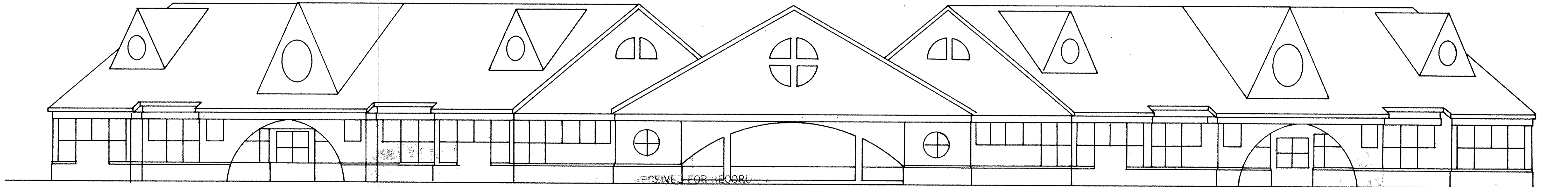
447170



EAST ELEVATION



WEST ELEVATION



SOUTH WEST ELEVATION

REVISIONS		

NORTH COLLEGE COMMONS CONDOMINIUMS  
 PHASE NO. 3  
 EXTERIOR ELEVATIONS

**KS ASSOCIATES, INC.**  
 ENGINEERS/SURVEYORS  
 424 Middle Avenue  
 P.O. Box 89  
 Elyria, Ohio 44036  
 Elyria (216) 322-6317 • Lorain (216) 244-5757



SHEET  
 3 OF  
 3  
 JOB NO.  
 89175-CP3