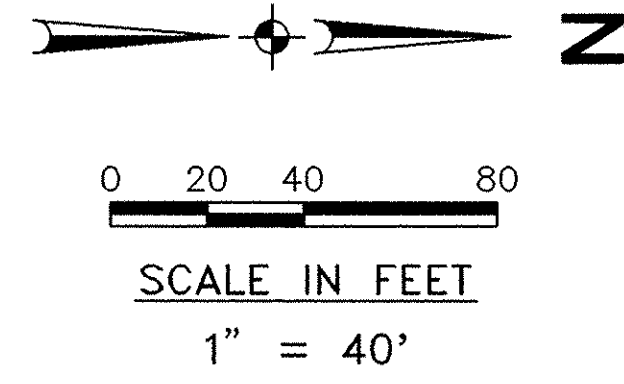


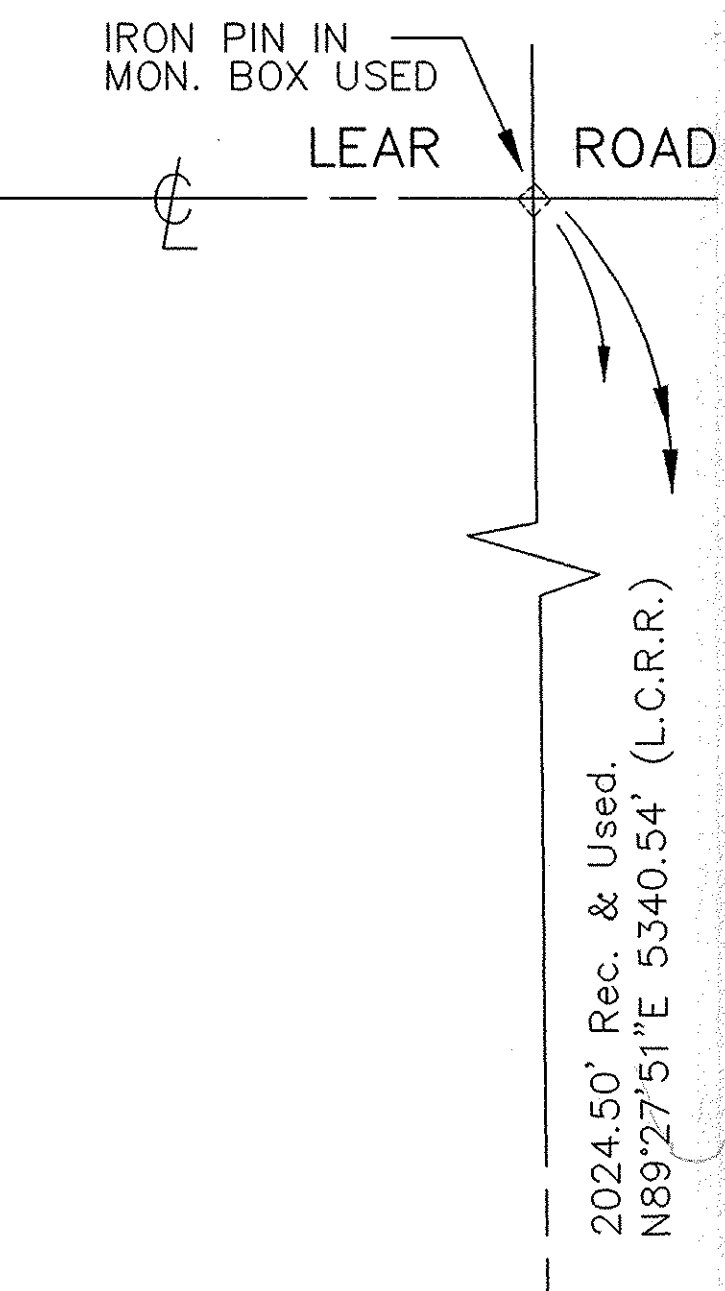
BRIDGESIDE SUBDIVISION NO. 2

BEING PART OF ORIGINAL AVON TOWNSHIP, SECTION NUMBER 29
CITY OF AVON LAKE, COUNTY OF LORAIN, STATE OF OHIO

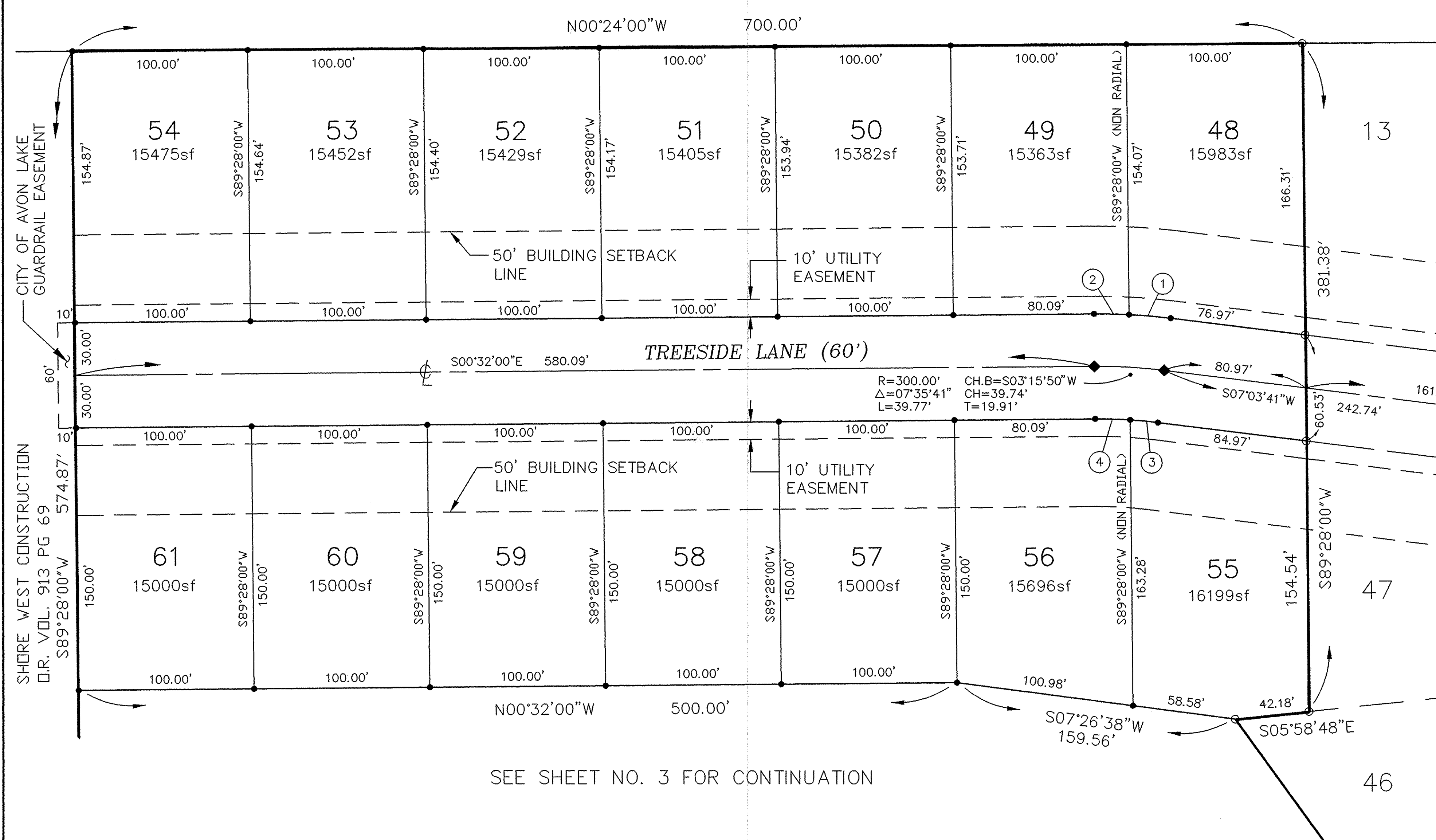


CURVE DATA ON ROW LINE

CURVE	LENGTH	DELTA	RADIUS	TANGENT	BEARING	CHORD
①	23.82'	04°08'07"	330.00'	11.91'	S04°59'37"W	23.81'
②	19.92'	03°27'33"	330.00'	9.97'	S01°11'47"W	19.92'
③	15.86'	03°21'55"	270.00'	7.93'	S05°22'43"W	15.86'
④	19.93'	04°13'45"	270.00'	9.97'	S01°34'53"W	19.93'
⑤	19.78'	03°26'01"	330.00'	9.89'	S02°15'01"E	19.77'
⑥	40.77'	93°26'01"	25.00'	26.54'	S42°44'59"W	36.40'
⑦	56.59'	14°05'49"	230.00'	28.44'	S82°25'05"W	56.45'
⑧	85.01'	21°10'35"	230.00'	42.99'	S64°46'53"W	84.52'
⑨	85.01'	21°10'35"	230.00'	42.99'	S43°36'18"W	84.52'
⑩	85.01'	21°10'35"	230.00'	42.99'	S22°25'43"W	84.52'
⑪	49.67'	12°22'25"	230.00'	24.93'	S05°39'13"W	49.57'
⑫	246.99'	83°14'37"	170.00'	151.05'	S41°05'19"W	225.83'
⑬	20.05'	06°45'23"	170.00'	10.03'	S86°05'19"W	20.03'
⑭	40.77'	93°26'01"	25.00'	26.54'	S43°48'59"E	36.40'
⑮	10.78'	01°52'20"	330.00'	5.39'	S01°57'51"W	10.78'
⑯	8.99'	01°33'39"	330.00'	4.50'	S00°14'49"W	8.99'
⑰	8.99'	01°54'31"	270.00'	4.50'	S01°29'15"E	8.99'
⑱	7.19'	01°31'30"	270.00'	3.59'	S03°12'16"E	7.19'
⑲	19.78'	03°26'01"	330.00'	9.89'	S02°15'01"E	19.77'
⑳	19.78'	03°26'01"	330.00'	9.89'	S01°11'01"W	19.77'
㉑	7.19'	01°31'30"	270.00'	3.59'	S02°08'16"W	7.19'
㉒	8.99'	01°54'31"	270.00'	4.50'	S00°25'15"W	8.99'



N. W. & C. M. SCHMOTZER
VOL. 1165 PG. 913



SEE SHEET NO. 3 FOR CONTINUATION

LEGEND

- IRON PIN/I. PIPE FOUND
- IRON PIN SET
- ◇ MONUMENT BOX FOUND
- ◆ MONUMENT BOX W/I. PIN SET

ACREAGE

AREA IN 52 SUBLOTS = 19.347 ACRES
 AREA IN R.O.W. = 3.978 ACRES
 TOTAL AREA = 23.325 ACRES

REVISIONS	
10/24/96	REVISED PER CITY OF AVON LAKE COMMENTS

BRIDGESIDE SUBDIVISION NO. 2

TAX MAP DEPT. COPY # 22043

REW R.E. WARNER & ASSOCIATES
CONSULTING ENGINEERS

THREE KING JAMES PARK · SUITE 300
24600 CENTER RIDGE ROAD
WESTLAKE, OHIO 44145
TELEPHONE 216/835-9400

JOB No. 119291

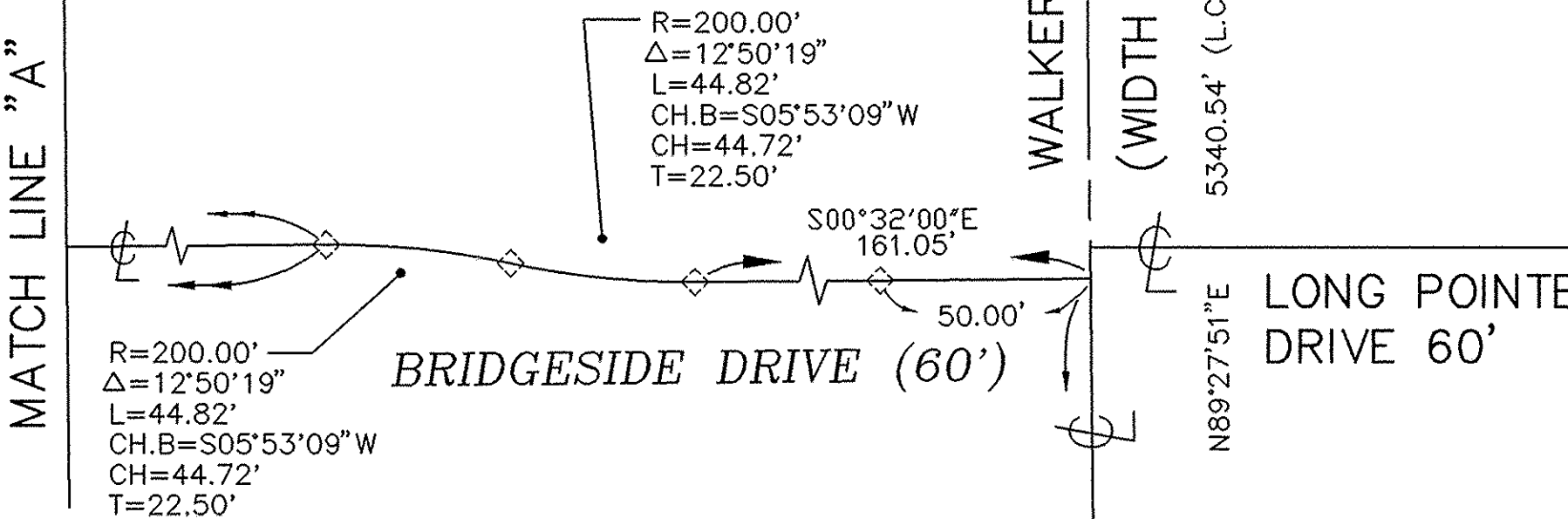
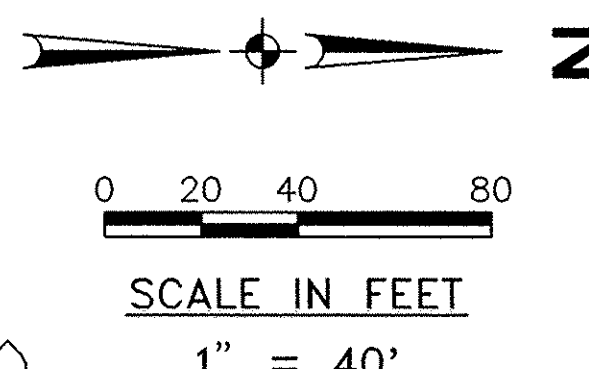
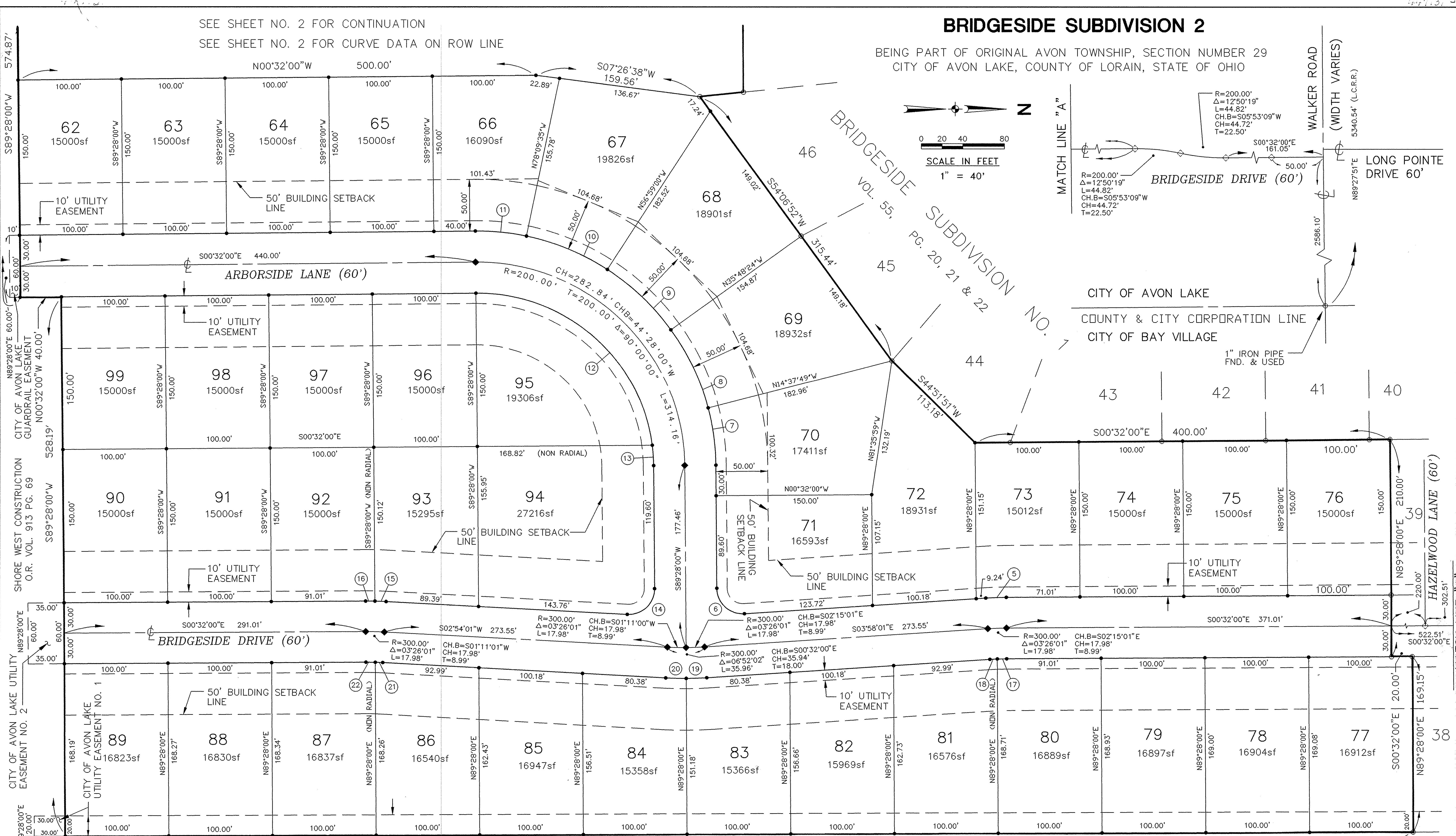
2
3
01-03-95

10/11/2001 PLAT-2] HB
11-13-96 16:15M

BRIDGESIDE SUBDIVISION 2

BEING PART OF ORIGINAL AVON TOWNSHIP, SECTION NUMBER 29
CITY OF AVON LAKE, COUNTY OF LORAIN, STATE OF OHIO

SEE SHEET NO. 2 FOR CONTINUATION
SEE SHEET NO. 2 FOR CURVE DATA ON ROW LINE



LEGEND		ACREAGE	
○	IRON PIN/I. PIPE FOUND	AREA IN 52 SUBLOTS	= 19.347 ACRES
●	IRON PIN SET	AREA IN R.O.W.	= 3.978 ACRES
◇	MONUMENT BOX FOUND	TOTAL AREA	= 23.325 ACRES
◆	MONUMENT BOX W/I. PIN SET		

REVISIONS	
11/14/96	REVISED PER CITY OF AVON LAKE
10/24/96	REVISED PER CITY OF AVON LAKE COMMENTS

KOPF CONSTRUCTION CORPORATION
VOL. 1425 PG 48

BRIDGESIDE SUBDIVISION NO. 2

TAX MAP DEPT. COPY # 22043

REW R.E. WARNER & ASSOCIATES
CONSULTING ENGINEERS
THREE KING JAMES PARK - SUITE 300
24600 CENTER RIDGE ROAD
WESTLAKE, OHIO 44145
TELEPHONE 216/835-9400

JOB No. 119291

3
3
01-03-95