

SUBDIVISION PLAT RED TAIL DEVELOPMENT NO. 1

PART OF ORIGINAL AVON TOWNSHIP LOT NO. 24
CITY OF AVON, COUNTY OF LORAIN, STATE OF
OHIO CONTAINING 54.3421 ACRES OF LAND OF
WHICH 8.6990 ACRES ARE DEDICATED STREETS,
19.4688 ACRES ARE IN BLOCKS AND 26.1743 ARE
WITHIN THE SUBDIVISION OF LOTS 1 TO 107
INCLUSIVE.

AUGUST 9, 1996

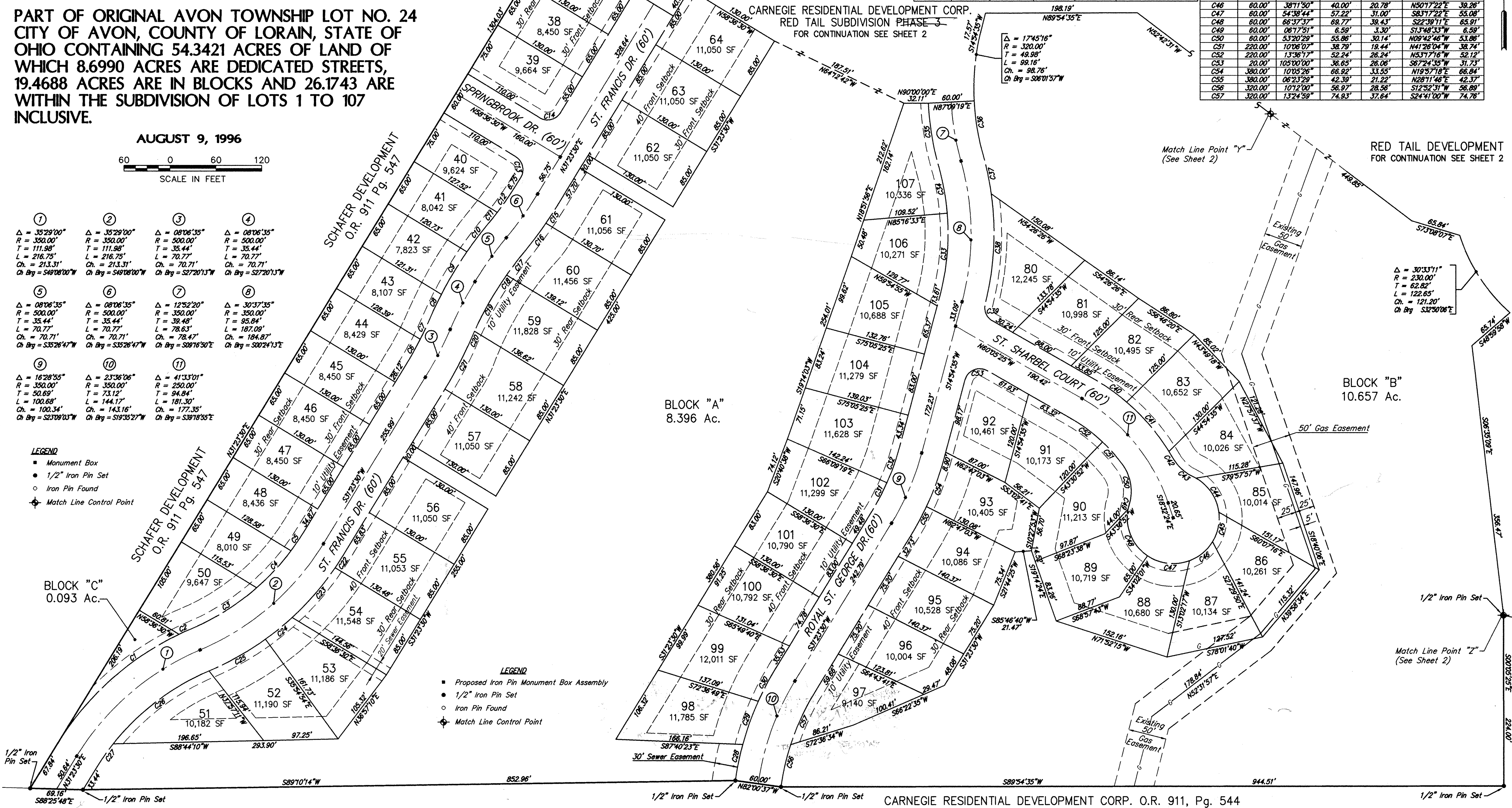


Curve No.	Radius	Delta	Arc Length	Tangent	Chord	Curve No.	Radius	Delta	Arc Length	Tangent	Chord	Curve No.	Radius	Delta	Arc Length	Tangent	Chord
C1	380.00'	32°51'43"	217.95'	112.06'	S47°49'22"W 214.97'	C14	20.00'	90°00'00"	31.42'	20.00'	N76°23'30"E 28.28'	C30	380.00'	07°13'10"	47.88'	23.97'	S27°46'55"W 47.85'
C2	380.00'	02°37'16"	17.38'	8.69'	S85°33'51"W 17.38'	C15	530.00'	02°57'08"	27.31'	13.66'	N32°52'04"E 27.30'	C31	320.00'	07°32'49"	42.15'	21.11'	N27°37'05"E 42.12'
C3	320.00'	18°11'20"	101.59'	51.22'	N57°46'50"E 101.16'	C16	530.00'	05°09'27"	47.71'	23.87'	N36°55'21"E 47.69'	C32	320.00'	08°56'06"	49.90'	25.00'	N19°22'38"E 49.85'
C4	320.00'	11°53'30"	66.42'	33.33'	N42°44'25"E 66.30'	C17	470.00'	04°36'00"	37.73'	18.88'	S37°12'05"W 37.72'	C33	320.00'	19°38'02"	108.66'	55.37'	N05°05'34"E 108.12'
C5	320.00'	05°24'10"	30.17'	15.10'	N34°05'35"E 30.16'	C18	470.00'	03°30'35"	28.79'	14.40'	S33°08'47"W 28.78'	C34	320.00'	10°59'34"	61.39'	30.79'	N10°31'14"E 61.30'
C6	470.00'	04°44'43"	38.93'	19.47'	N29°01'08"E 38.91'	C19	470.00'	06°52'16"	56.36'	28.22'	S27°57'22"W 56.33'	C35	380.00'	12°52'20"	85.37'	42.87'	S08°16'50"E 85.19'
C7	470.00'	03°21'52"	27.60'	13.80'	N24°57'51"E 27.59'	C20	470.00'	01°14'19"	10.16'	5.08'	S23°54'05"W 10.16'	C36	320.00'	12°52'20"	71.89'	36.10'	S08°16'50"E 71.74'
C8	530.00'	04°05'11"	37.80'	18.91'	S25°19'31"W 37.79'	C21	530.00'	08°07'37"	75.18'	37.65'	N27°20'44"E 75.11'	C37	380.00'	07°52'49"	52.26'	26.17'	N11°46'36"W 52.22'
C9	530.00'	07°01'54"	65.04'	32.56'	S30°53'03"W 65.00'	C22	380.00'	02°53'31"	19.18'	9.59'	N32°50'16"E 19.18'	C38	380.00'	21°59'19"	145.83'	73.83'	N03°08'28"E 144.94'
C10	530.00'	05°06'05"	47.19'	23.61'	S36°57'02"W 47.17'	C23	380.00'	13°01'07"	86.34'	43.36'	N40°47'35"E 86.16'	C39	20.00'	74°14'33"	25.92'	15.14'	S22°58'08"E 24.14'
C11	470.00'	02°13'01"	18.19'	9.09'	N38°23'34"E 18.18'	C24	380.00'	06°46'57"	44.98'	22.52'	N50°41'37"E 44.96'	C40	280.00'	10°52'12"	53.12'	26.64'	N54°39'19"W 53.04'
C12	470.00'	05°53'34"	48.34'	24.19'	N34°20'17"E 48.32'	C25	380.00'	12°47'24"	84.83'	42.59'	N60°28'49"E 84.65'	C41	280.00'	17°31'06"	85.61'	43.14'	N40°27'40"W 85.28'
C13	20.00'	90°00'00"	31.42'	20.00'	N13°36'30"W 28.28'	C26	320.00'	28°31'46"	159.34'	81.36'	S82°36'37"W 157.70'	C42	280.00'	02°04'31"	10.14'	5.07'	N30°39'52"W 10.14'
						C27	320.00'	06°57'14"	38.84'	19.44'	S34°52'07"W 38.81'	C43	60.00'	34°43'00"	36.36'	18.75'	S48°59'06"E 35.80'
						C28	380.00'	07°07'16"	47.23'	23.64'	S11°33'01"W 47.20'	C44	60.00'	53°16'08"	55.78'	30.08'	N33°38'27"W 53.80'
						C29	380.00'	09°15'45"	61.43'	30.78'	S19°32'27"W 61.36'	C45	60.00'	34°43'00"	40.00'	20.78'	N12°05'39"E 39.26'

- ① Δ = 35°29'00"
R = 350.00"
T = 111.98"
L = 216.75"
Ch. = 213.31"
Ch. Brg = S49°08'00"W
- ② Δ = 35°29'00"
R = 350.00"
T = 111.98"
L = 216.75"
Ch. = 213.31"
Ch. Brg = S49°08'00"W
- ③ Δ = 08°06'35"
R = 500.00"
T = 35.44"
L = 70.77"
Ch. = 70.71"
Ch. Brg = S27°20'13"W
- ④ Δ = 08°06'35"
R = 500.00"
T = 35.44"
L = 70.77"
Ch. = 70.71"
Ch. Brg = S27°20'13"W
- ⑤ Δ = 08°06'35"
R = 500.00"
T = 35.44"
L = 70.77"
Ch. = 70.71"
Ch. Brg = S35°26'47"W
- ⑥ Δ = 08°06'35"
R = 500.00"
T = 35.44"
L = 70.77"
Ch. = 70.71"
Ch. Brg = S35°26'47"W
- ⑦ Δ = 12°52'20"
R = 350.00"
T = 39.48"
L = 78.63"
Ch. = 78.47"
Ch. Brg = S08°16'50"E
- ⑧ Δ = 30°37'35"
R = 350.00"
T = 95.84"
L = 187.09"
Ch. = 184.87"
Ch. Brg = S00°24'13"E
- ⑨ Δ = 16°28'55"
R = 350.00"
T = 50.69"
L = 100.68"
Ch. = 100.34"
Ch. Brg = S23°09'03"W
- ⑩ Δ = 23°36'06"
R = 350.00"
T = 73.12"
L = 144.17"
Ch. = 143.16"
Ch. Brg = S19°35'27"W
- ⑪ Δ = 41°33'01"
R = 250.00"
T = 94.84"
L = 181.30"
Ch. = 177.35"
Ch. Brg = S39°18'55"E

- LEGEND
- Monument Box
 - 1/2" Iron Pin Set
 - Iron Pin Found
 - ◆ Match Line Control Point

- LEGEND
- Proposed Iron Pin Monument Box Assembly
 - 1/2" Iron Pin Set
 - Iron Pin Found
 - ◆ Match Line Control Point



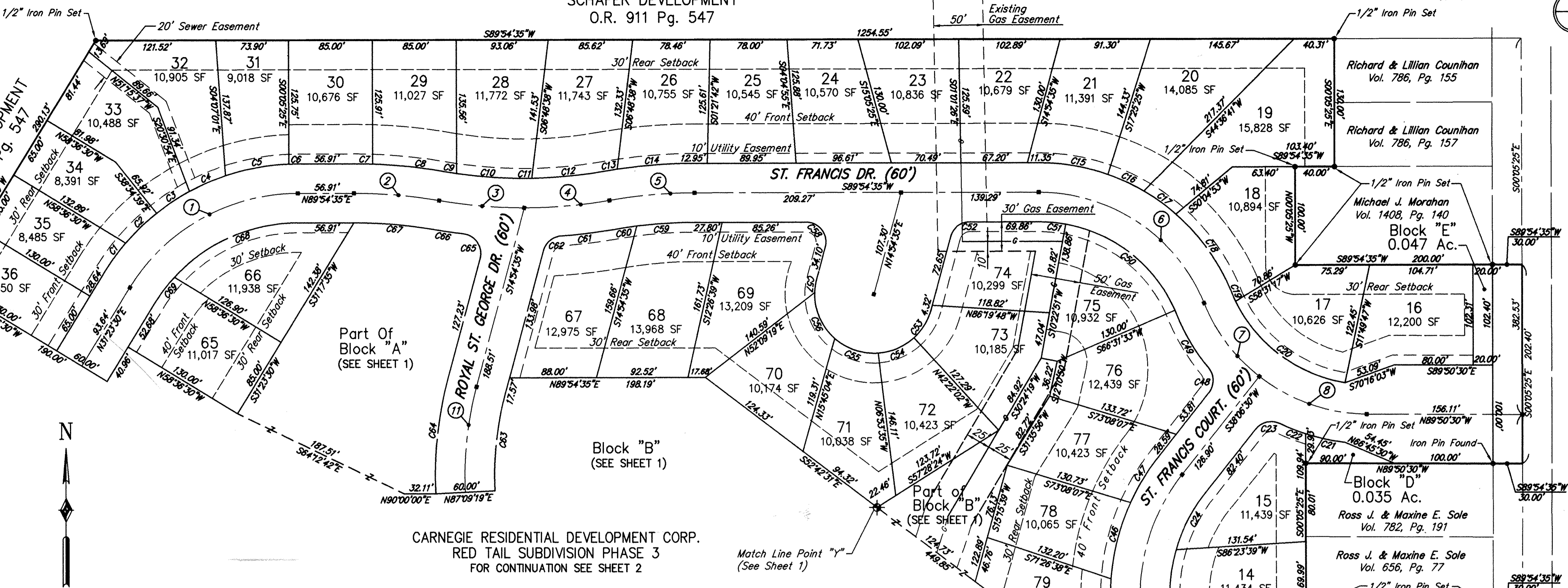
LORAIN COUNTY TAX
MAP DEPARTMENT COPY 57/44

#21885

- ① Δ = 58°31'05" R = 200.00' T = 112.05' L = 204.27' Ch. = 195.50' Ch Brg = S89°30'13"W
- ② Δ = 09°56'11" R = 500.00' T = 43.46' L = 86.71' Ch. = 86.60' Ch Brg = S89°30'13"W
- ③ Δ = 09°56'11" R = 500.00' T = 43.46' L = 86.71' Ch. = 86.60' Ch Brg = S89°30'13"W
- ④ Δ = 09°56'11" R = 500.00' T = 43.46' L = 86.71' Ch. = 86.60' Ch Brg = S89°30'13"W
- ⑤ Δ = 09°56'11" R = 500.00' T = 43.46' L = 86.71' Ch. = 86.60' Ch Brg = S89°30'13"W
- ⑥ Δ = 68°11'45" R = 180.00' T = 121.86' L = 214.94' Ch. = 201.82' Ch Brg = N55°59'32"W
- ⑦ Δ = 29°59'50" R = 180.00' T = 48.23' L = 94.24' Ch. = 93.17' Ch Brg = S36°53'35"E
- ⑧ Δ = 37°57'00" R = 180.00' T = 61.89' L = 119.22' Ch. = 117.06' Ch Brg = N70°52'00"W
- ⑨ Δ = 99°25'35" R = 200.00' T = 235.94' L = 347.06' Ch. = 305.13' Ch Brg = N11°36'18"W
- ⑩ Δ = 17°45'16" R = 150.00' T = 88.92' L = 160.53' Ch. = 152.98' Ch Brg = S30°39'33"W
- ⑪ Δ = 61°19'06" R = 350.00' T = 54.67' L = 108.45' Ch. = 108.02' Ch Brg = S06°01'57"W

Match Line Point "X"
(See Sheet 1)

Curve No.	Radius	Delta	Arc Length	Tangent	Chord
C1	230.00'	09°05'45"	36.51'	18.30'	535°56'23"W 36.48'
C2	230.00'	10°56'06"	43.90'	22.01'	S45°57'18"W 43.83'
C3	230.00'	09°57'52"	40.00'	20.05'	S56°24'17"W 39.95'
C4	230.00'	09°57'52"	40.00'	20.05'	S66°22'09"W 39.95'
C5	230.00'	16°19'10"	65.51'	32.98'	S79°30'40"W 65.29'
C6	230.00'	02°14'20"	8.99'	4.49'	S88°47'25"W 8.99'
C7	530.00'	02°03'56"	19.11'	9.55'	N89°03'27"W 19.11'
C8	530.00'	07°52'15"	72.81'	36.46'	N84°05'21"W 72.75'
C9	470.00'	01°33'43"	12.81'	6.41'	S80°56'06"E 12.81'
C10	470.00'	08°22'28"	68.69'	34.41'	S85°54'11"E 68.63'
C11	470.00'	00°55'37"	7.60'	3.80'	N89°26'46"E 7.60'
C12	470.00'	09°00'34"	73.90'	37.03'	N84°28'41"E 73.83'
C13	530.00'	01°26'56"	13.40'	6.70'	S80°41'52"W 13.40'
C14	530.00'	08°29'15"	78.51'	39.33'	S85°39'58"W 78.44'
C15	210.00'	19°31'02"	71.53'	36.12'	N80°19'54"W 71.19'
C16	210.00'	10°54'48"	40.00'	20.06'	N65°06'58"W 39.94'
C17	210.00'	10°54'48"	40.00'	20.06'	N54°12'10"W 39.94'
C18	210.00'	26°51'06"	98.42'	50.13'	N35°19'13"W 97.52'
C19	190.00'	03°53'40"	10.20'	5.10'	S23°50'34"E 10.20'
C20	190.00'	54°48'54"	143.65'	77.81'	S53°12'25"E 138.13'
C21	210.00'	11°11'20"	41.01'	20.57'	S77°44'54"E 40.94'
C22	210.00'	07°42'23"	28.21'	14.14'	S88°18'03"E 28.22'
C23	210.00'	77°26'39"	27.03'	16.04'	S76°49'49"W 25.02'
C24	170.00'	22°07'35"	65.65'	33.24'	S27°02'42"W 65.24'
C25	170.00'	33°21'06"	98.96'	50.92'	S00°41'39"E 97.57'
C26	170.00'	39°33'46"	114.42'	59.47'	S36°39'05"E 112.27'
C27	170.00'	05°23'08"	15.98'	8.00'	S58°37'32"E 15.97'
C28	180.00'	16°43'07"	52.52'	26.45'	N52°57'32"W 52.34'
C29	180.00'	16°43'07"	52.52'	26.45'	N36°14'25"W 52.34'
C30	180.00'	12°43'57"	40.00'	20.08'	N21°30'53"W 39.92'
C31	180.00'	15°08'54"	47.59'	23.93'	N07°34'27"W 47.45'
C32	60.00'	07°21'01"	7.70'	3.85'	S03°40'31"E 7.69'
C33	60.00'	34°03'33"	35.67'	18.38'	S24°22'48"E 35.14'
C34	60.00'	32°23'50"	33.93'	17.43'	N25°12'40"W 33.48'
C35	60.00'	60°43'30"	63.59'	35.15'	N21°21'00"E 60.66'
C36	60.00'	38°11'50"	40.00'	20.78'	N70°48'40"E 39.26'
C37	60.00'	38°11'50"	40.00'	20.78'	S70°59'31"E 39.26'
C38	60.00'	60°16'30"	63.12'	34.83'	S21°45'21"E 60.25'
C39	60.00'	33°01'40"	34.59'	17.79'	S24°53'44"W 34.11'
C40	60.00'	41°24'35"	43.36'	22.68'	N20°42'17"E 42.43'
C41	120.00'	18°40'55"	39.13'	19.74'	N09°20'28"W 38.95'
C42	120.00'	42°38'10"	88.30'	46.83'	N40°00'00"W 87.25'
C43	230.00'	13°12'24"	53.02'	26.63'	S54°42'54"E 52.90'
C44	230.00'	30°33'11"	122.65'	62.82'	S32°50'06"E 121.20'
C45	230.00'	21°51'44"	87.76'	44.42'	S06°37'38"E 87.23'
C46	230.00'	20°03'03"	80.49'	40.66'	S14°19'45"W 80.08'
C47	230.00'	13°45'13"	55.21'	27.74'	S31°13'53"W 55.08'
C48	20.00'	17°28'39"	27.03'	16.04'	N03°15'50"W 25.94'
C49	210.00'	17°28'29"	63.93'	32.21'	S30°36'55"E 63.68'
C50	150.00'	56°08'42"	146.99'	80.00'	N51°32'48"W 141.18'
C51	150.00'	10°28'16"	27.41'	13.75'	N84°51'17"W 27.38'
C52	20.00'	75°00'00"	26.18'	15.35'	S52°24'35"W 24.35'
C53	60.00'	32°43'23"	34.27'	17.62'	N31°16'16"E 33.80'
C54	60.00'	38°11'50"	40.00'	20.78'	N68°43'53"E 39.26'
C55	60.00'	45°35'09"	47.74'	25.21'	S71°22'38"E 46.49'
C56	60.00'	50°15'36"	52.63'	28.14'	S23°27'15"E 50.96'
C57	60.00'	13°14'02"	13.86'	6.96'	S08°17'34"W 13.83'
C58	20.00'	105°00'00"	36.65'	26.06'	N37°35'25"W 31.73'
C59	470.00'	07°08'58"	58.65'	29.36'	S86°20'06"W 58.61'
C60	470.00'	02°47'13"	22.86'	11.43'	S81°22'00"W 22.86'
C61	530.00'	05°53'53"	54.56'	27.30'	N82°55'21"E 54.54'
C62	20.00'	70°57'42"	24.77'	14.26'	S50°23'26"W 23.22'
C63	320.00'	17°45'16"	98.16'	49.98'	S06°01'57"W 98.76'
C64	380.00'	17°45'16"	117.75'	59.35'	S06°01'57"W 117.28'
C65	20.00'	98°10'05"	34.31'	23.13'	N34°14'28"W 30.26'
C66	530.00'	03°14'16"	29.95'	14.98'	S81°46'22"E 29.95'
C67	470.00'	09°56'11"	81.51'	40.86'	N85°07'20"W 81.41'
C68	170.00'	47°33'33"	141.11'	74.91'	S86°07'48"W 137.09'
C69	170.00'	10°57'32"	32.52'	16.31'	S36°52'16"W 32.47'



OWNERS CERTIFICATION

ACCEPTANCE & DEDICATION

WE, THE UNDERSIGNED OWNER, CARNEGIE RESIDENTIAL DEVELOPMENT CORPORATION HEREBY CERTIFY THAT THIS PLAT CORRECTLY REPRESENTS RED TAIL DEVELOPMENT, A SUBDIVISION OF LOTS 1 TO 107 INCLUSIVE, AND DO HEREBY ACCEPT THIS PLAT OF SAME AND DEDICATE TO PUBLIC USE ALL STREETS SHOWN HEREON AND DESIGNATED AS SAINT FRANCIS DRIVE, SAINT FRANCIS COURT, ROYAL SAINT GEORGE DRIVE, SAINT SHARBEL DRIVE, SPRINGBROOK DRIVE, PORTIONS OF LEARY NAGEL ROAD.

WE GRANT ALL EASEMENTS FOR SEWERS AND DRAINAGE SHOWN HEREON TO PUBLIC USE. THIS UNDERSIGNED FURTHER AGREES THAT ANY USE OF IMPROVEMENTS MADE ON THIS LAND SHALL BE IN CONFORMITY WITH ALL EXISTING ZONING, PLATTING, HEALTH OR OTHER LAWFUL RULES AND REGULATIONS OF THE CITY OF AVON, OHIO, FOR THE BENEFIT OF THEMSELVES AND ALL OTHER SUBSEQUENT OWNERS OR ASSIGNS TAKING TITLE FROM UNDER OR THROUGH THE UNDERSIGNED.

IN WITNESS WHEREOF, WE CARNEGIE RESIDENTIAL DEVELOPMENT CORPORATION, BY MARY KHOURI, PRESIDENT, HAVE HEREUNTO SET OUR HANDS THIS DAY OF 1996.

CARNEGIE RESIDENTIAL DEVELOPMENT CORPORATION

MARY KHOURI, PRESIDENT

STATE OF OHIO
COUNTY OF LORAIN S.S.

THE FOREGOING INSTRUMENT WAS ACKNOWLEDGED BEFORE ME THIS DAY OF 1996.

NOTARY PUBLIC
MY COMM. EXPIRES

THIS DRAWING IS A CORRECT REPRESENTATION FROM A SURVEY MADE BY JAMES A. RESAR, REGISTERED OHIO SURVEYOR NO. 6361. DISTANCES SHOWN HEREON ARE IN FEET AND DECIMAL PARTS THEREOF; BEARINGS ARE TO AN ASSUMED MERIDIAN AND ARE SHOWN TO DEFINE ANGLES ONLY; IRON MONUMENTS WERE FOUND AS INDICATED ON THE PLAT.

EUTHENICS INC.
CONSULTING ENGINEERS
975 KEYNOTE CIRCLE
CLEVELAND, OHIO 44131

Donald W. Kaminski, Civil Engineer & Surveyor

APPROVALS

THIS PLAT IS APPROVED FOR RECORDING PURPOSES ONLY THIS 13th DAY OF August 1996.

CITY ENGINEER *Steve C. Zwick*

THIS PLAT IS APPROVED FOR RECORDING PURPOSES ONLY THIS 1st DAY OF August 1996.

PLANNING COMMISSION-CHAIRPERSON *Fred Beal*

THIS PLAT IS APPROVED FOR RECORDING PURPOSES ONLY THIS DAY OF 1996. THIS APPROVAL DOES NOT CONSTITUTE AN ACCEPTANCE OF THE DEDICATION OF ANY PUBLIC STREET OR HIGHWAY DEDICATED HEREON.

COUNCIL PRESIDENT *Edwin Hopt*

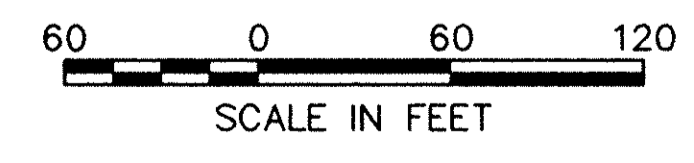
TRANSFERRED
IN COMPLIANCE WITH SEC. 319-202
OHIO R.V. CODE
AUG 23 1996

MARK R. STEWART
LORAIN COUNTY AUDITOR

RECEIVED FOR RECORD
at 11:30 clock A.M. In PLAT RECORD
VOL. 57 MARY ANN JAMISON
PAGE 444-45 Lorain County Recorder
Box: 5UER AUG 23 1996 8640
LORAIN COUNTY RECORDER

UNDERGROUND EASEMENT

THE OWNER OF THE WITHIN PLATTED LAND DOES HEREBY GRANT UNTO THE OHIO EDISON COMPANY, CENTURY TELEPHONE COMPANY, AND CABLEVISION, THEIR SUCCESSORS AND ASSIGNEES (HEREIN AFTER REFERRED TO AS THE GRANTEEES) A PERMANENT RIGHT OF WAY EASEMENT TEN FEET (10') IN WIDTH OVER, UNDER, AND THROUGH ALL SUBLOTS AND LANDS SHOWN HEREON AND PARALLEL WITH ALL STREET LINES TO CONSTRUCT, PLACE OPERATE, MAINTAIN, REPAIR, RECONSTRUCT, AND RELOCATE SUCH UNDERGROUND ELECTRIC AND COMMUNICATION CABLES, DUCTS, CONDUITS, SURFACE OR BELOW GROUND MOUNTED TRANSFORMERS, PEDESTALS, CONCRETE PADS AND OTHER FACILITIES AS ARE DEEMED NECESSARY OR CONVENIENT FOR THE GRANTEEES TO DISTRIBUTE AND TRANSMIT ELECTRICITY AND COMMUNICATIONS SIGNALS FOR PUBLIC AND PRIVATE USE AT SUCH LOCATIONS AS GRANTEEES MAY DETERMINE UPON, WITHIN, AND ACROSS THE EASEMENT PREMISES. SAID EASEMENT SHALL INCLUDE THE RIGHT OF INSTALL, MAINTAIN, REPAIR, AND AUGMENT ELECTRIC AND COMMUNICATIONS FACILITIES OUTSIDE THE ABOVE DESCRIBED PREMISES AND SHALL ALSO INCLUDE THE RIGHT OF ACCESS, INGRESS, AND EGRESS TO AND FROM ANY OF THE WITHIN DESCRIBED PREMISES FOR THE PURPOSE OF EXERCISING ANY OF THE EASEMENT RIGHTS INDICATED HEREIN. GRANTEEES SHALL AT THEIR EXPENSE RESTORE THE LAND TO ITS CONDITION AS IT EXISTED IMMEDIATELY PRIOR TO THE WORK PERFORMED BY GRANTEEES, EXCEPT GRANTEEES SHALL NOT BE RESPONSIBLE FOR REPLACING OR REPAIRING ANY PERMANENT STRUCTURES, TREES OR SHRUBS WHICH ARE LOCATED WITHIN THE EASEMENT BOUNDARIES AND ARE DAMAGED OR REMOVED AS A RESULT OF WORK PERFORMED AS PROVIDED FOR HEREIN BY GRANTEEES. THE SUBLOTS SHALL BE RESTRICTED TO UNDERGROUND UTILITY SERVICE.



- LEGEND**
- Proposed Iron Pin Monument Box Assembly
 - 1/2" Iron Pin Set
 - Iron Pin Found
 - Match Line Control Point