

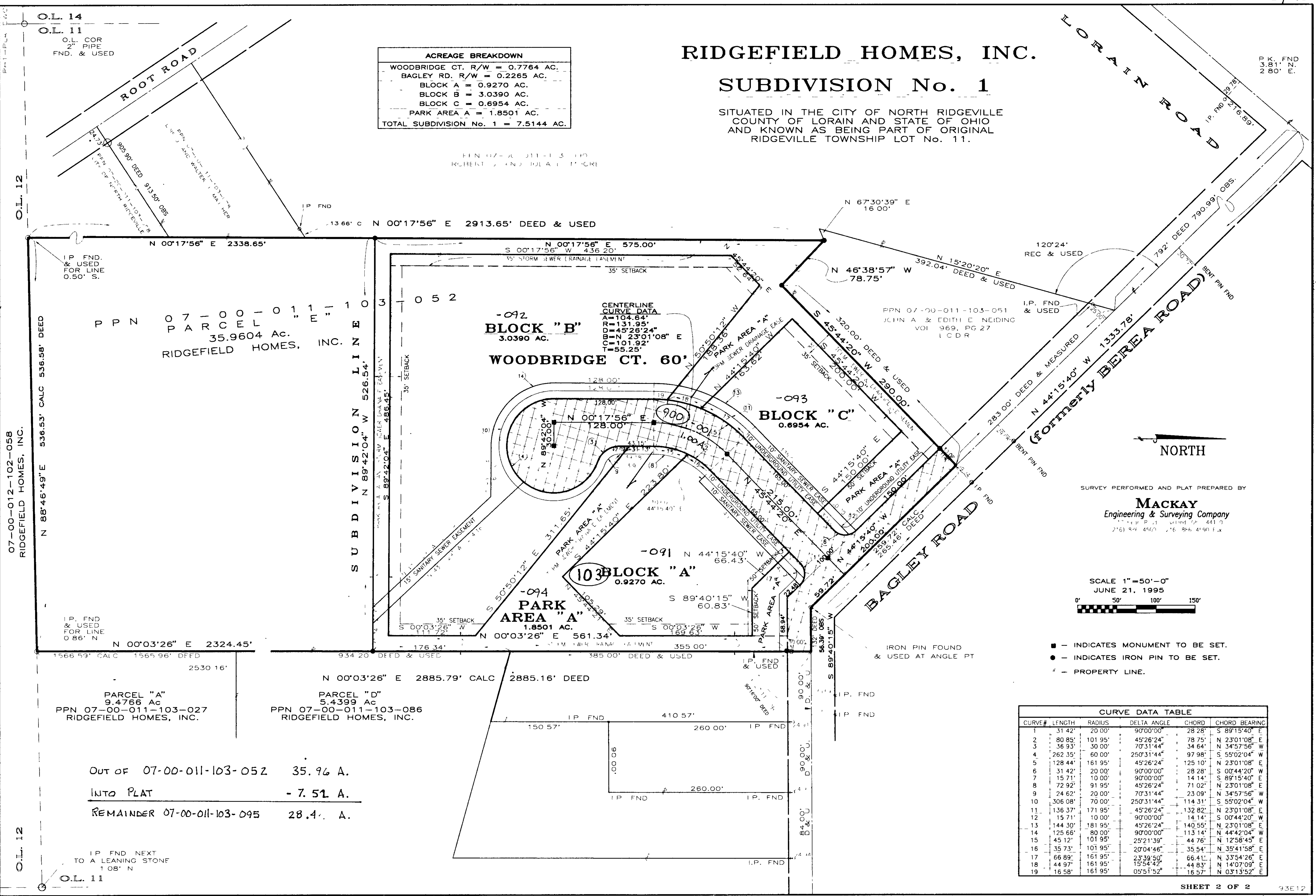
RIDGEFIELD HOMES, INC.

SUBDIVISION No. 1

SITUATED IN THE CITY OF NORTH RIDGEVILLE
 COUNTY OF LORAIN AND STATE OF OHIO
 AND KNOWN AS BEING PART OF ORIGINAL
 RIDGEVILLE TOWNSHIP LOT No. 11.

ACREAGE BREAKDOWN	
WOODBRIDGE CT. R/W	= 0.7784 AC.
BAGLEY RD. R/W	= 0.2265 AC.
BLOCK A	= 0.9270 AC.
BLOCK B	= 3.0390 AC.
BLOCK C	= 0.6954 AC.
PARK AREA A	= 1.8501 AC.
TOTAL SUBDIVISION No. 1	= 7.5144 AC.

FIN 07-00-011-13-110
 ROBERT J. AND JULIA L. MOORE



SURVEY PERFORMED AND PLAT PREPARED BY
MACKAY
 Engineering & Surveying Company
 2161 Park Road, North Ridgeville, OH 44130
 (216) 846-4500 / (216) 846-4190 Fax

SCALE 1"=50'-0"
 JUNE 21, 1995

- - INDICATES MONUMENT TO BE SET.
- - INDICATES IRON PIN TO BE SET.
- - - PROPERTY LINE.

CURVE DATA TABLE					
CURVE#	LENGTH	RADIUS	DELTA ANGLE	CHORD	CHORD BEARING
1	31.42'	20.00'	90°00'00"	28.28'	S 89°15'40" E
2	80.85'	101.95'	45°26'24"	78.75'	N 23°01'08" E
3	36.93'	30.00'	70°31'44"	34.64'	N 34°57'56" W
4	262.35'	60.00'	250°31'44"	97.98'	S 55°02'04" W
5	128.44'	161.95'	45°26'24"	125.10'	N 23°01'08" E
6	31.42'	20.00'	90°00'00"	28.28'	S 00°44'20" W
7	15.71'	10.00'	90°00'00"	14.14'	S 89°15'40" E
8	72.92'	91.95'	45°26'24"	71.02'	N 23°01'08" E
9	24.62'	20.00'	70°31'44"	23.09'	N 34°57'56" W
10	306.08'	70.00'	250°31'44"	114.31'	S 55°02'04" W
11	136.37'	171.95'	45°26'24"	132.82'	N 23°01'08" E
12	15.71'	10.00'	90°00'00"	14.14'	S 00°44'20" W
13	144.30'	181.95'	45°26'24"	140.55'	N 23°01'08" E
14	125.66'	80.00'	90°00'00"	113.14'	N 44°42'04" W
15	45.12'	101.95'	25°21'39"	44.76'	N 12°58'45" E
16	35.73'	101.95'	20°04'46"	35.54'	N 35°41'58" E
17	66.89'	161.95'	23°39'50"	66.41'	N 33°54'26" E
18	44.97'	161.95'	15°54'42"	44.83'	N 14°07'09" E
19	16.58'	161.95'	05°51'52"	16.57'	N 03°13'52" E

07-00-012-102-058
 RIDGEFIELD HOMES, INC.

O.L. 12

O.L. 12

OUT OF 07-00-011-103-052 35.96 A.
 INTO PLAT - 7.51 A.
 REMAINDER 07-00-011-103-095 28.4 A.

I.P. FND NEXT
 TO A LEANING STONE
 1.08' N

O.L. 11

I.P. FND
 & USED
 FOR LINE
 0.86' N

I.P. FND
 & USED
 FOR LINE
 0.50' S.

O.L. 14
 O.L. 11
 O.L. COR
 2" PIPE
 FND. & USED

PPN 07-00-011-103-052
 PARCEL "E"
 35.9604 Ac.
 RIDGEFIELD HOMES, INC.

PARCEL "D"
 5.4399 Ac
 PPN 07-00-011-103-086
 RIDGEFIELD HOMES, INC.

PARCEL "A"
 9.4766 Ac
 PPN 07-00-011-103-027
 RIDGEFIELD HOMES, INC.

CENTERLINE
 CURVE DATA
 A=104.64'
 R=131.95'
 D=45°28'24"
 B=N 23°01'08" E
 C=101.92'
 T=55.25'

-092
BLOCK "B"
 3.0390 AC.
 WOODBRIDGE CT. 60'

-093
BLOCK "C"
 0.6954 AC.

-091
BLOCK "A"
 0.9270 AC.

-094
PARK AREA "A"
 1.8501 AC.

IRON PIN FOUND
 & USED AT ANGLE PT

120°24'
 REC & USED

I.P. FND
 & USED

PPN 07-00-011-103-051
 JOHN A & EDITH E NEIDING
 VOL 969, PG 27
 LCDR

I.P. FND
 24.81' N
 80' E.

I.P. FND
 92.76'

I.P. FND
 790.99' OBS.

BENT PIN FND

BENT PIN FND

BENT PIN FND

BENT PIN FND

BENT PIN FND

BENT PIN FND

BENT PIN FND

BENT PIN FND

BENT PIN FND

BENT PIN FND

BENT PIN FND

364037

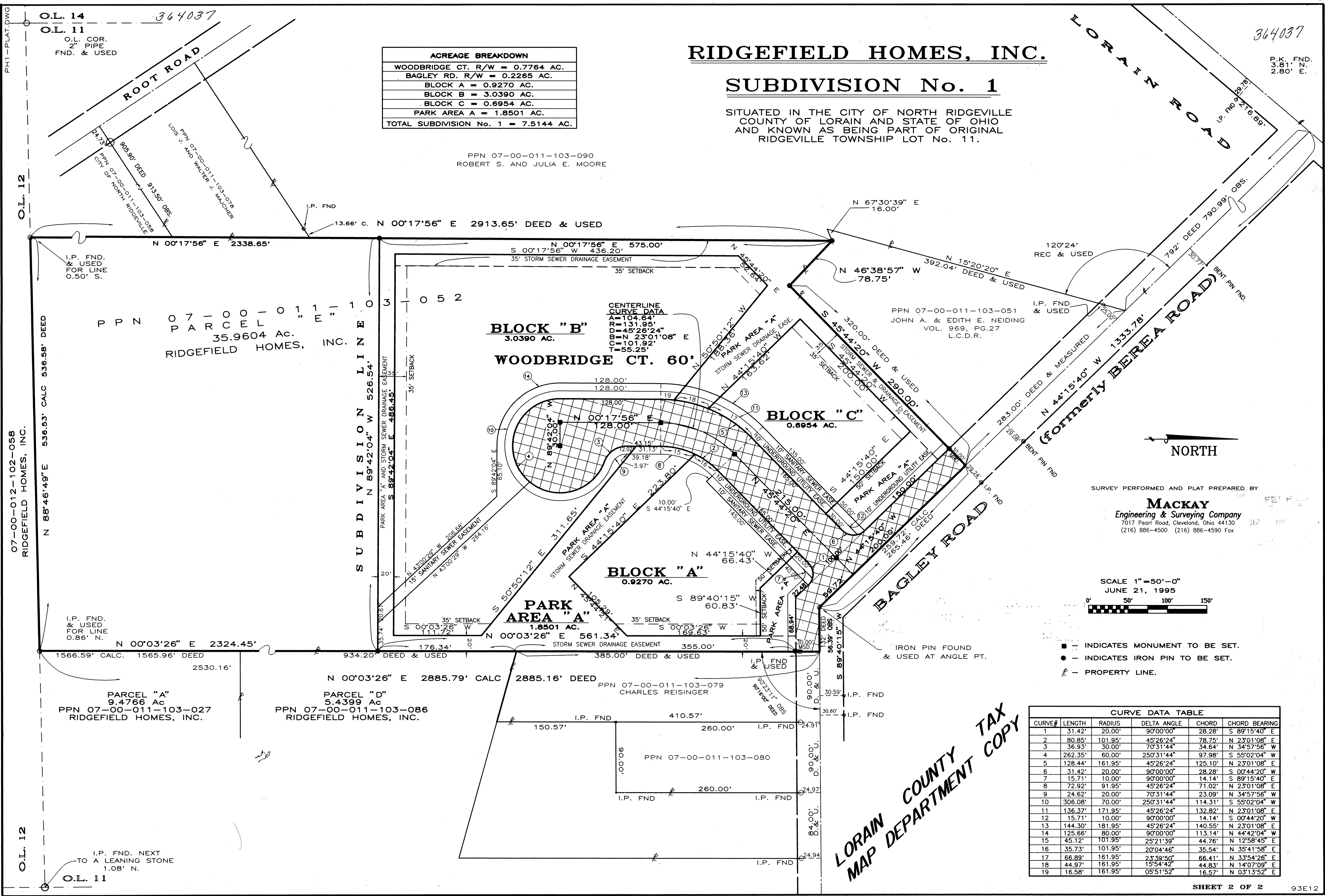
RIDGEFIELD HOMES, INC. SUBDIVISION No. 1

SITUATED IN THE CITY OF NORTH RIDGEVILLE
COUNTY OF LORAIN AND STATE OF OHIO
AND KNOWN AS BEING PART OF ORIGINAL
RIDGEVILLE TOWNSHIP LOT No. 11.

ACREAGE BREAKDOWN	
WOODBIDGE CT. R/W	= 0.7764 AC.
BAGLEY RD. R/W	= 0.2265 AC.
BLOCK A	= 0.9270 AC.
BLOCK B	= 3.0390 AC.
BLOCK C	= 0.6954 AC.
PARK AREA A	= 1.8501 AC.
TOTAL SUBDIVISION No. 1	= 7.5144 AC.

PPN 07-00-011-103-090
ROBERT S. AND JULIA E. MOORE

P.K. FND.
3.81' N.
2.80' E.



PPN 07-00-011-103-052
PARCEL "E"
35.9604 AC.
RIDGEFIELD HOMES, INC.

CENTERLINE
CURVE DATA
A=104.64'
R=131.95'
D=45°28'24"
B=N 23°01'08" E
C=N 101.92'
T=55.25'

PPN 07-00-011-103-051
JOHN A. & EDITH E. NEIDING
VOL. 969, PG.27
L.C.D.R.

SURVEY PERFORMED AND PLAT PREPARED BY
MACKAY
Engineering & Surveying Company
7017 Pearl Road, Cleveland, Ohio 44130
(216) 886-4500 (216) 886-4590 Fax

SCALE 1"=50'-0"
JUNE 21, 1995

- INDICATES MONUMENT TO BE SET.
- INDICATES IRON PIN TO BE SET.
- PROPERTY LINE.

CURVE DATA TABLE					
CURVE#	LENGTH	RADIUS	DELTA ANGLE	CHORD	CHORD BEARING
1	31.42'	20.00'	90°00'00"	28.28'	S 89°15'40" E
2	80.85'	101.95'	45°26'24"	78.75'	N 23°01'08" E
3	36.93'	30.00'	70°31'44"	34.64'	N 34°57'56" W
4	262.35'	60.00'	250°31'44"	97.98'	S 55°02'04" W
5	128.44'	161.95'	45°26'24"	125.10'	N 23°01'08" E
6	31.42'	20.00'	90°00'00"	28.28'	S 00°44'20" W
7	15.71'	10.00'	90°00'00"	14.14'	S 89°15'40" E
8	72.92'	91.95'	45°26'24"	71.02'	N 23°01'08" E
9	24.62'	20.00'	70°31'44"	23.09'	N 34°57'56" W
10	306.08'	70.00'	250°31'44"	114.31'	S 55°02'04" W
11	136.37'	171.95'	45°26'24"	132.82'	N 23°01'08" E
12	15.71'	10.00'	90°00'00"	14.14'	S 00°44'20" W
13	144.30'	181.95'	45°26'24"	140.55'	N 23°01'08" E
14	125.66'	80.00'	90°00'00"	113.14'	N 44°42'04" W
15	45.12'	101.95'	25°21'39"	44.76'	N 12°58'45" E
16	35.73'	101.95'	20°04'46"	35.54'	N 35°41'58" E
17	66.89'	161.95'	23°38'50"	66.41'	N 33°54'26" E
18	44.97'	161.95'	15°54'42"	44.83'	N 14°07'09" E
19	16.58'	161.95'	05°51'52"	16.57'	N 03°13'52" E

LORAIN COUNTY
MAP DEPARTMENT TAX
COPY