

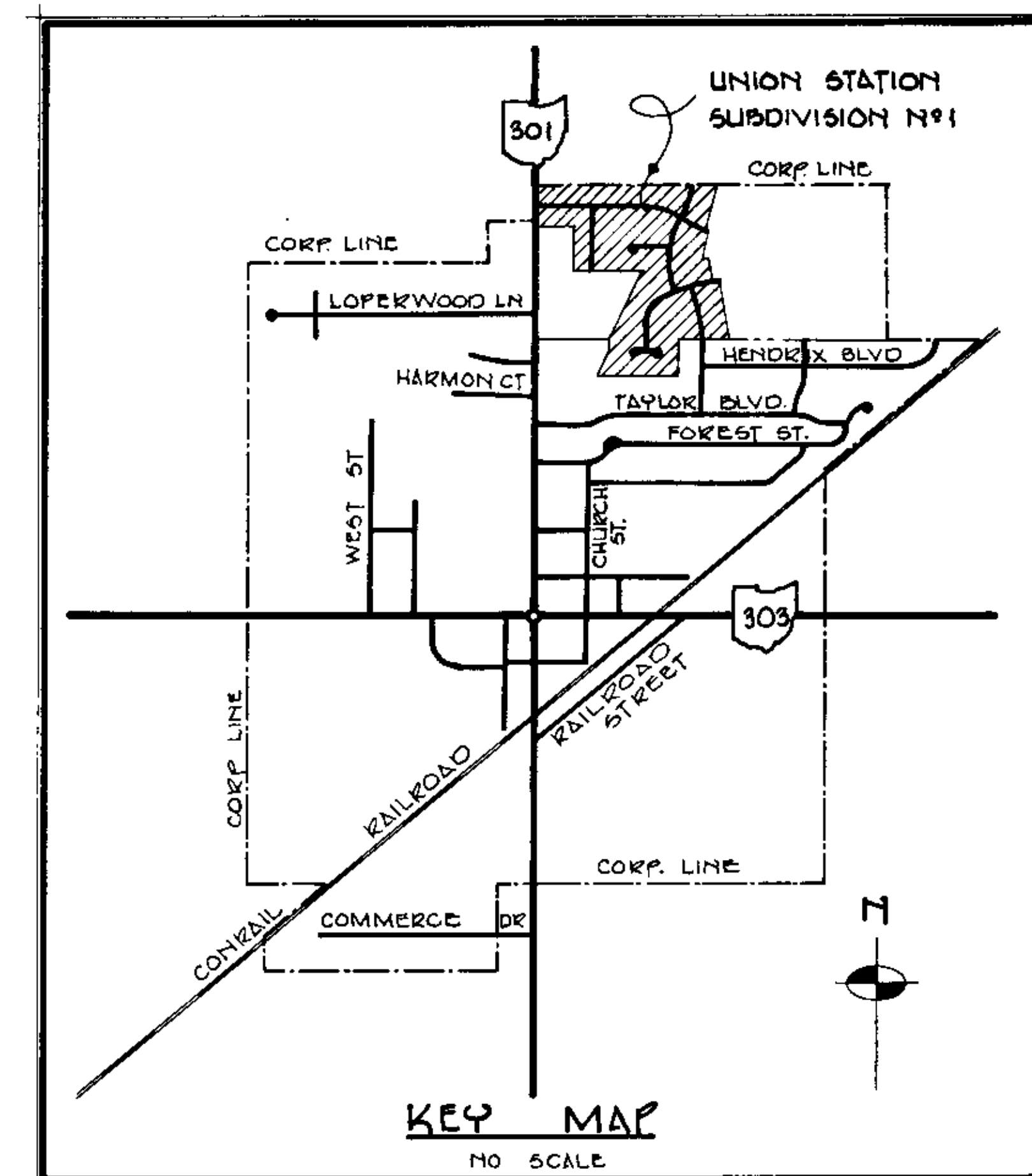
**APPROVALS**

PLANNING COMMISSION FOR THE VILLAGE OF LAGRANGE

*Ray Dill*  
 CHAIRMAN - RAY DILL  
*Laura Brinkhoff*  
 SECRETARY - LAVERNE BRINKHOFF  
 January 5, 1995  
 DATE

COUNCIL FOR THE VILLAGE OF LAGRANGE

*Kenneth L. Sooy*  
 MAYOR - KENNETH L. SOOY  
*Rita K. Ruot*  
 CLERK - RITA K. RUOT  
 JANUARY 12, 1995  
 DATE



**SURVEYOR'S CERTIFICATE**

THIS IS TO CERTIFY THAT AT THE REQUEST OF THE OWNER, WE HAVE SURVEYED AND PLATTED "UNION STATION SUBDIVISION NO. 1" AS SHOWN HEREON. NORTH AS SHOWN IS TO AN ASSUMED MERIDIAN WITH BEARINGS USED TO DESCRIBE ANGLES ONLY. DISTANCES SHOWN ARE IN FEET AND DECIMAL PARTS THEREOF. IRON PIN MONUMENTS FOUND ARE INDICATED THUSLY - O - . IRON PIN MONUMENTS SET ARE INDICATED THUSLY - ● - . PERMANENT CENTER LINE MONUMENTATION SHOWN THUSLY - — — — SHALL BE SET UPON COMPLETION OF PAVEMENT CONSTRUCTION. THIS PLAT AS INDICATED BY THE HEAVY LINE EMBRACES 41.1105 ACRES OF LAND OF WHICH 36.1643 ACRES LIE IN O.L. 35, & 4.9257 ACRES LIE IN O.L. 46. THERE ARE 7.9858 ACRES IN DEDICATED STREETS AND 33.1247 ACRES IN BUILDING LOTS, BLOCKS A, B, C, D, E & F ALL OF WHICH WE CERTIFY TO BE CORRECT.



LAUNDON • SIMON • CAHL & ASSOC. INC.  
 ENGINEERS SURVEYORS  
*Rodger G. Simon*  
 RODGER G. SIMON REG SURVEYOR

**NOTE No. 1**

- A 10' (TEN) FOOT WIDE EASEMENT CONTIGUOUS AND ADJACENT TO EACH RIGHT-OF-WAY OR AS SHOWN HAS BEEN RESERVED FOR ALL TEL, OHIO EDISON CO. AND CABLE TELEVISION. ALL OTHER EASEMENTS ARE SHOWN WITH SPECIFIC USES ON THE PLAT

**NOTE No. 2**

- MINIMUM BUILDING SETBACK LINE TO BE TYPICALLY 40' THROUGHOUT AS SHOWN.

**OWNER'S CERTIFICATE**

SITUATED IN THE TOWNSHIP OF LAGRANGE, VILLAGE OF LAGRANGE, COUNTY OF LORAIN, STATE OF OHIO AND BEING PART OF ORIGINAL LOTS 35 AND 46 OF SAID TOWNSHIP CONTAINING 41.1105 ACRES OF LAND AND BEING THE SAME LAND AS CONVEYED TO DAVID DEVELOPMENT CO. BY DEED RECORDED IN OFFICIAL RECORD VOLUME 1019 PAGE 902 OF THE LORAIN COUNTY RECORDS. THE UNDERSIGNED DOES HEREBY CERTIFY THAT THE PLAT SHOWN HEREBY CORRECTLY REPRESENTS ITS "UNION STATION SUBDIVISION NO. 1" AND DOES HEREBY DEDICATE TO PUBLIC USE THE STREETS AND EASEMENTS AS SHOWN ON THIS 4<sup>th</sup> DAY OF January, 1995.

*Calvin W. Smith*  
 DAVID DEVELOPMENT CO  
 BY CALVIN W. SMITH - PRESIDENT

*Rodger G. Simon*  
 WITNESS

**NOTARIAL SEAL**

STATE OF OHIO  
 COUNTY OF LORAIN SS  
 THIS IS TO CERTIFY THAT BEFORE ME, A NOTARY PUBLIC IN AND FOR SAID COUNTY AND STATE, DID PERSONALLY APPEAR THE OWNER AS SIGNED ABOVE WHO ACKNOWLEDGED THE SIGNING OF THIS PLAT TO BE ITS FREE ACT AND DEED, IN WITNESS WHEREOF I HAVE HEREUNTO SET MY HAND AND OFFICIAL SEAL THIS 4<sup>th</sup> DAY OF JANUARY, 1995.

*Gail A. Paukst*  
 NOTARY PUBLIC  
 GAIL A. PAUKST

*June 25, 1996*  
 COMMISSION EXPIRES



**UNION STATION SUBDIVISION NO. 1**

PART OF ORIGINAL LOTS 35 & 46 TOWNSHIP OF LAGRANGE  
 VILLAGE OF LAGRANGE COUNTY OF LORAIN STATE OF OHIO  
 NOVEMBER 1994

LAUNDON • SIMON • CAHL & ASSOC  
 ENGINEERS SURVEYORS  
 110 MIDDLE AVENUE  
 ELYRIA, OHIO 44035

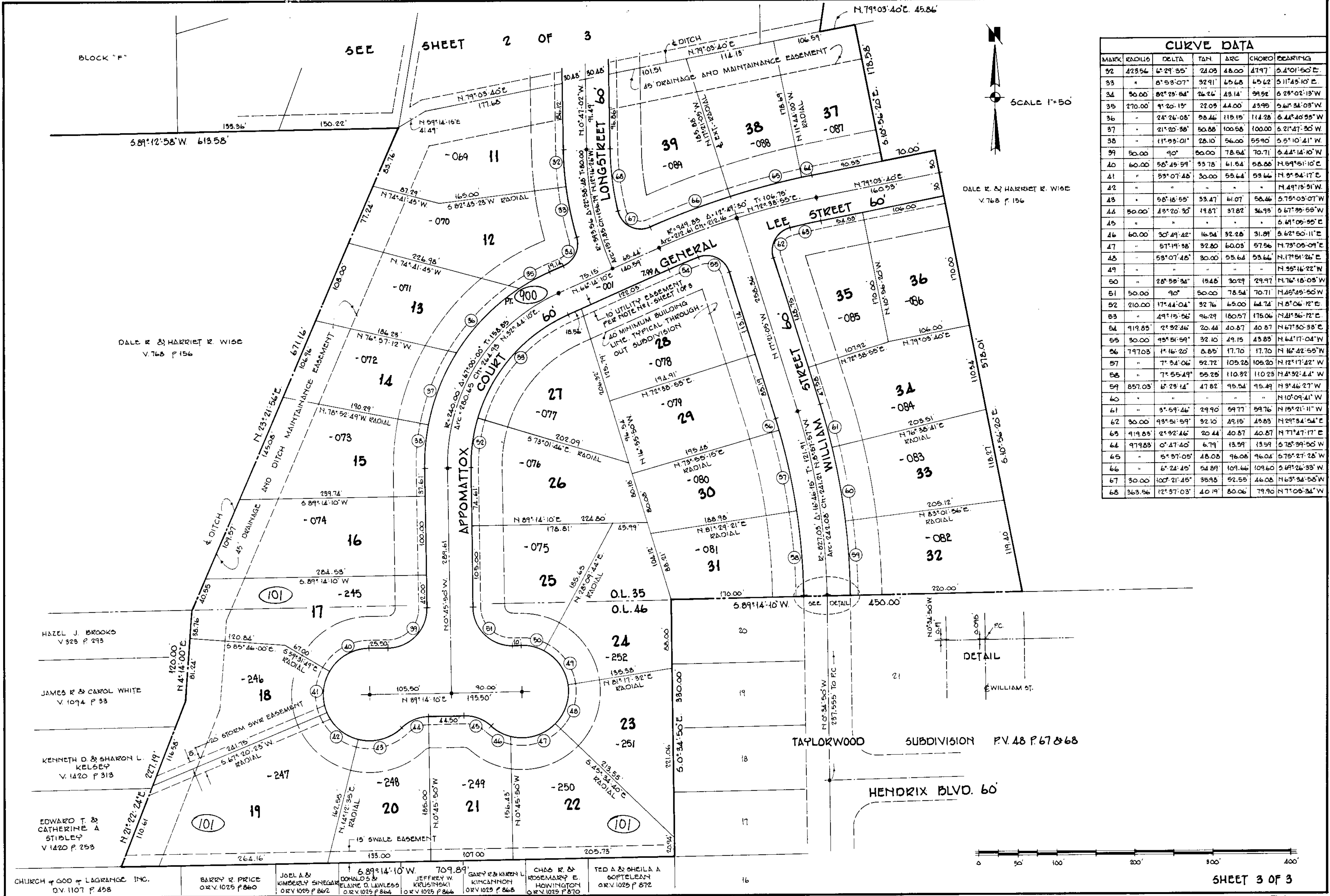
LORAIN COUNTY AUDITOR

LORAIN COUNTY RECORDER  
 MARY ANN JAMISON  
 26, 27, 28 INC.

4/29/95  
 100 - 207 ( - 17)







CURVE DATA						
MARK	RADIUS	DELTA	TAN	ARC	CHORD	BEARING
32	423.56	6° 29' 35"	24.09	48.00	47.97	S. 4° 01' 50" E.
33	"	8° 53' 07"	32.91	65.68	65.62	S. 11° 43' 10" E.
34	50.00	82° 23' 54"	26.26	43.14	99.92	S. 25° 02' 13" W.
35	270.00	9° 20' 13"	22.09	44.00	43.95	S. 66° 34' 03" W.
36	"	24° 26' 08"	55.46	115.15	114.28	S. 44° 40' 55" W.
37	"	21° 20' 38"	50.86	100.56	100.00	S. 21° 47' 30" W.
38	"	11° 53' 01"	25.10	56.00	55.90	S. 5° 10' 41" W.
39	50.00	90°	50.00	78.64	70.71	S. 44° 14' 10" W.
40	60.00	58° 45' 59"	33.78	61.54	58.06	N. 89° 51' 10" E.
41	"	53° 07' 48"	30.00	55.64	53.66	N. 3° 54' 17" E.
42	"	"	"	"	"	N. 49° 13' 31" W.
43	"	58° 16' 55"	33.47	61.07	58.46	S. 75° 03' 07" W.
44	50.00	43° 20' 30"	19.87	37.82	36.93	S. 67° 39' 55" W.
45	"	"	"	"	"	S. 69° 05' 55" E.
46	60.00	30° 49' 42"	16.54	32.26	31.89	S. 62° 50' 11" E.
47	"	57° 19' 38"	32.80	60.03	57.56	N. 73° 05' 09" E.
48	"	53° 07' 48"	30.00	55.64	53.66	N. 17° 51' 26" E.
49	"	"	"	"	"	N. 35° 16' 22" W.
50	"	28° 55' 34"	15.46	30.29	29.97	N. 76° 18' 05" W.
51	50.00	90°	50.00	78.64	70.71	N. 45° 45' 50" W.
52	210.00	17° 44' 04"	32.76	65.00	64.74	N. 8° 06' 12" E.
53	"	49° 15' 56"	46.29	180.57	175.06	N. 41° 36' 12" E.
54	919.83	2° 32' 46"	20.44	40.87	40.87	N. 67° 30' 33" E.
55	30.00	95° 51' 59"	32.10	49.15	43.83	N. 64° 17' 04" W.
56	797.03	1° 16' 20"	8.85	17.70	17.70	N. 16° 42' 55" W.
57	"	7° 34' 06"	52.72	105.28	105.20	N. 12° 17' 42" W.
58	"	7° 55' 49"	55.25	110.32	110.23	N. 12° 32' 44" W.
59	857.03	6° 23' 14"	47.82	95.54	95.49	N. 3° 46' 27" W.
60	"	"	"	"	"	N. 10° 09' 41" W.
61	"	3° 59' 46"	29.90	59.77	59.76	N. 15° 21' 11" W.
62	30.00	93° 51' 59"	32.10	49.15	43.83	N. 29° 34' 54" E.
63	919.83	2° 32' 46"	20.44	40.87	40.87	N. 71° 47' 17" E.
64	979.83	0° 47' 40"	6.79	13.59	13.59	S. 78° 39' 50" W.
65	"	5° 37' 05"	48.08	96.08	96.04	S. 75° 27' 28" W.
66	"	6° 24' 45"	54.89	109.66	109.60	S. 69° 26' 33" W.
67	30.00	100° 21' 45"	35.98	52.55	46.08	N. 63° 34' 56" W.
68	263.56	12° 37' 03"	40.19	80.06	79.90	N. 7° 05' 34" W.