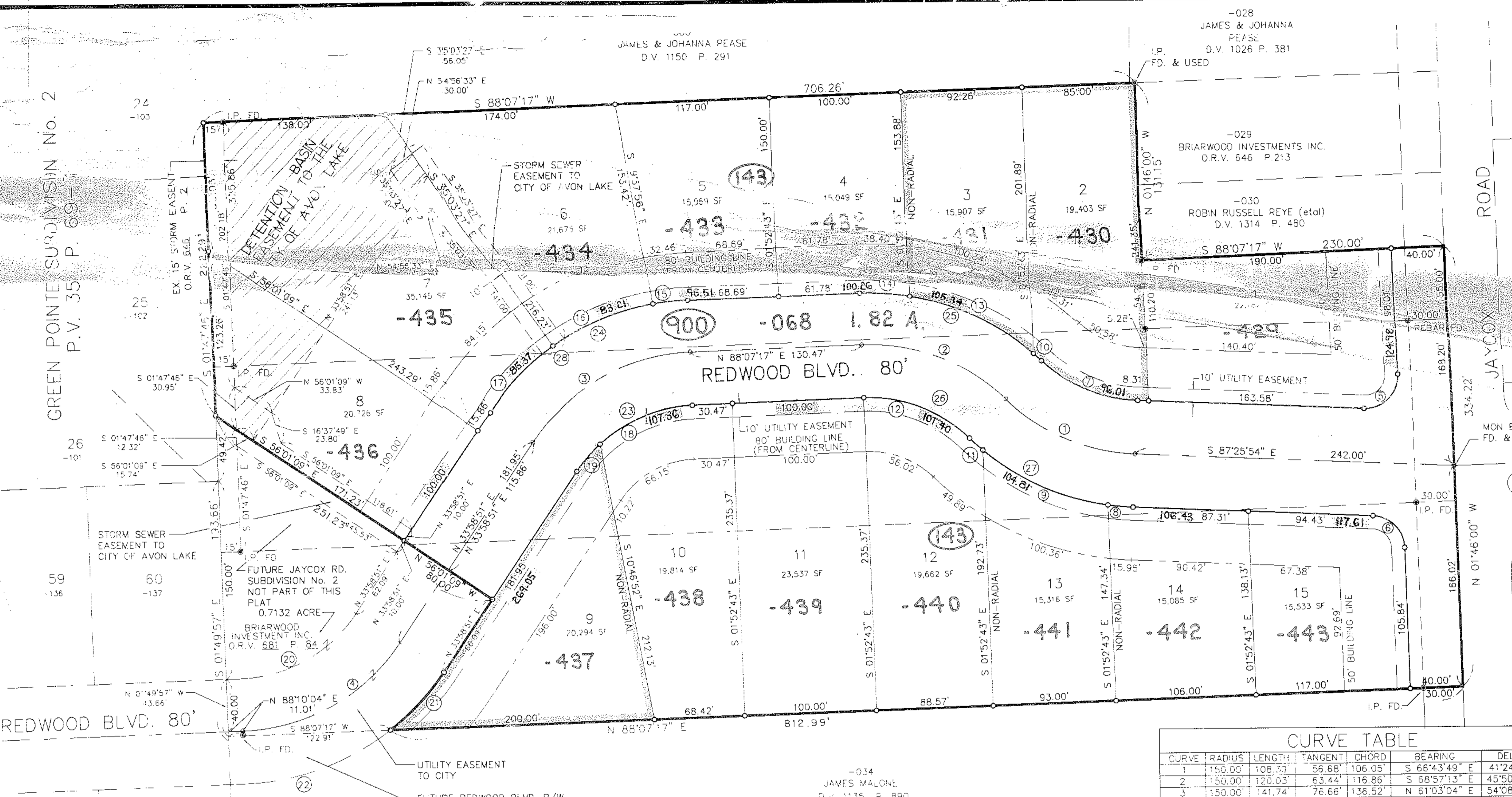


GREEN POINTE SUBDIVISION No. 4  
P.V. 36 P. 64 & 65

GREEN POINTE SUBDIVISION No. 2  
P.V. 35 P. 69

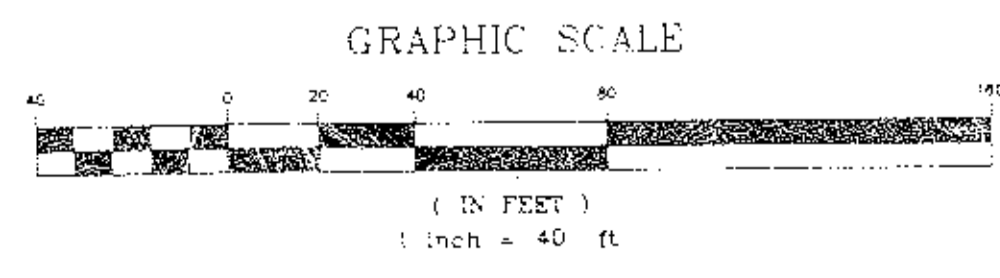
THE DAKOTA'S SUBDIVISION No. 1



CURVE	RADIUS	LENGTH	TANGENT	CHORD	BEARING	DELTA
1	150.00'	108.79'	56.68'	106.05'	S 66°43'49" E	41°24'10"
2	150.00'	120.03'	63.44'	116.86'	S 68°57'13" E	45°50'59"
3	150.00'	141.74'	76.66'	136.52'	N 61°03'04" E	54°08'26"
4	150.00'	141.86'	76.74'	136.63'	S 61°04'27" W	54°11'12"
5	25.00'	41.16'	26.97'	36.67'	N 45°24'03" E	94°20'06"
6	25.00'	37.38'	23.18'	33.99'	S 44°35'57" E	85°39'54"
7	110.00'	79.49'	41.57'	77.77'	S 68°43'49" E	41°24'10"
8	190.00'	19.12'	9.57'	19.11'	S 84°32'58" E	05°45'52"
9	190.00'	104.81'	53.77'	103.48'	N 65°51'52" W	31°36'20"
10	190.00'	8.21'	4.11'	8.21'	S 47°16'03" E	02°28'38"
11	190.00'	13.37'	6.69'	13.37'	N 48°02'43" W	04°01'58"
12	110.00'	88.03'	46.52'	85.70'	S 68°57'13" E	45°50'59"
13	190.00'	105.34'	54.06'	104.00'	S 64°23'23" E	31°46'02"
14	190.00'	38.48'	19.31'	38.42'	N 86°04'33" W	01°36'19"
15	190.00'	26.82'	13.43'	26.80'	N 84°04'40" E	08°05'13"
16	190.00'	83.21'	42.28'	82.54'	S 67°29'18" W	25°05'31"
17	190.00'	69.51'	35.15'	69.12'	S 44°27'42" W	20°57'42"
18	110.00'	76.89'	40.09'	75.33'	N 68°05'47" E	40°03'01"
19	110.00'	27.05'	13.59'	26.98'	S 41°01'34" W	14°05'25"
20	110.00'	102.03'	55.02'	98.41'	N 61°35'42" E	53°08'42"
21	190.00'	60.05'	30.28'	59.80'	N 43°02'04" E	18°06'26"
22	190.00'	119.64'	61.88'	117.68'	N 70°07'40" E	36°04'47"
23	110.00'	103.94'	56.22'	100.12'	S 61°03'04" W	54°08'26"
24	190.00'	179.54'	97.10'	172.93'	N 61°03'04" E	54°08'26"
25	190.00'	152.04'	80.36'	148.02'	S 68°57'13" E	45°50'59"
26	110.00'	88.03'	46.52'	85.70'	N 68°57'13" W	45°50'59"
27	190.00'	137.30'	71.80'	134.33'	S 66°43'49" E	41°24'10"
28	190.00'	20.01'	10.02'	20.00'	N 54°32'20" E	6°02'02"

- LEGEND:**
- I.P. SFT
  - I.P. FOUND
  - ⊕ MON. BOX SET
  - ⊖ MON. BOX FOUND

AREA IN 15 SUBLOTS 6.7791 AC.  
 AREA IN RIGHT-OF-WAY 1.8161 AC.  
 TOTAL AREA IN SUBDIVISION 8.5952 AC.



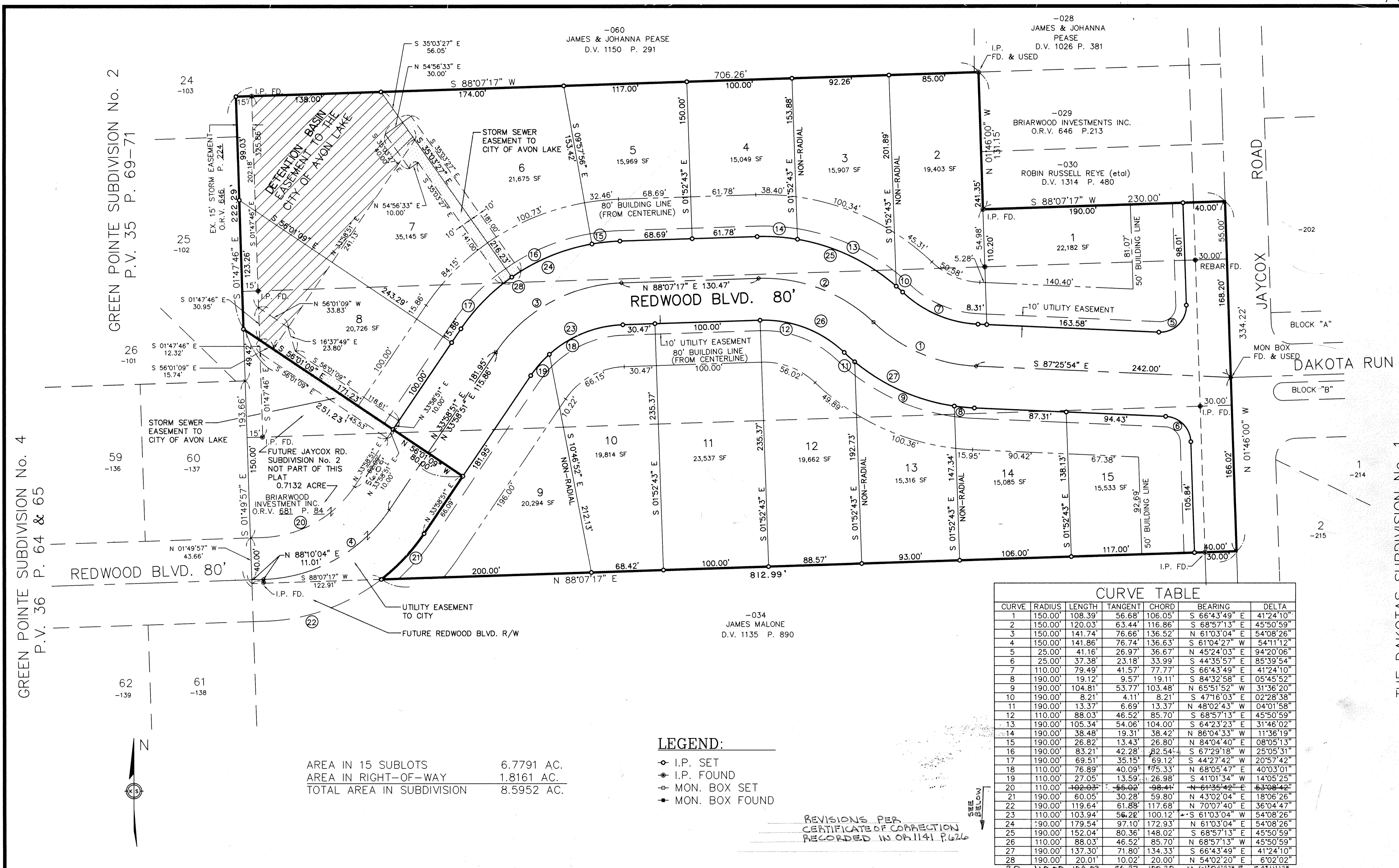
NO.	DATE	REVISION
1	2-12-94	REVISE AREAS

JAYCOX ROAD SUBDIVISION No. 1  
 PART OF ORIGINAL AVON TOWNSHIP SECTION No. 19  
 CITY OF AVON LAKE, LORAIN COUNTY, OHIO

KS ASSOCIATES, INC.  
 ENGINEERS/SURVEYORS  
 424 Middle Avenue  
 P.O. Box 89  
 Elyria, Ohio 44006  
 ELYRIA (216) 322-6317 • LORAIN (216) 244-5757



#21065  
 APPROVED  
 LORAIN CO. MAP DEPT.  
 DATE 02-15-94  
 PRICE \$100.00

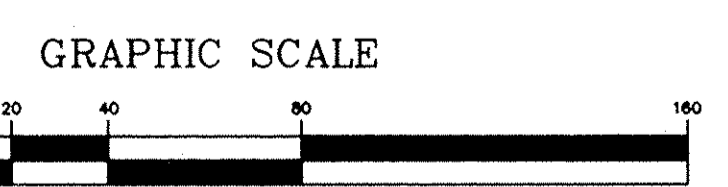
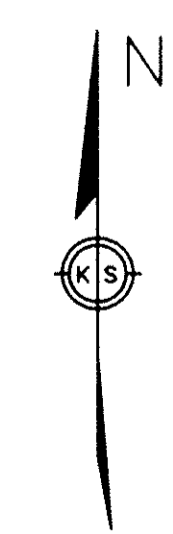


GREEN POINTE SUBDIVISION No. 2  
P.V. 35 P. 69-71

GREEN POINTE SUBDIVISION No. 4  
P.V. 36 P. 64 & 65

THE DAKOTAS SUBDIVISION No. 1

62 -139  
61 -138



AREA IN 15 SUBLOTS 6.7791 AC.  
AREA IN RIGHT-OF-WAY 1.8161 AC.  
TOTAL AREA IN SUBDIVISION 8.5952 AC.

- LEGEND:**
- I.P. SET
  - I.P. FOUND
  - ⊕ MON. BOX SET
  - ⊕ MON. BOX FOUND

REVISIONS PER  
CERTIFICATE OF CORRECTION  
RECORDED IN OH.1141 P.626

CURVE	RADIUS	LENGTH	TANGENT	CHORD	BEARING	DELTA
1	150.00'	108.39'	56.68'	106.05'	S 66°43'49" E	41°24'10"
2	150.00'	120.03'	63.44'	116.86'	S 68°57'13" E	45°50'59"
3	150.00'	141.74'	76.66'	136.52'	N 61°03'04" E	54°08'26"
4	150.00'	141.86'	76.74'	136.63'	S 61°04'27" W	54°11'12"
5	25.00'	41.16'	26.97'	36.67'	N 45°24'03" E	94°20'06"
6	25.00'	37.38'	23.18'	33.99'	S 44°35'57" E	85°39'54"
7	110.00'	79.49'	41.57'	77.77'	S 66°43'49" E	41°24'10"
8	190.00'	19.12'	9.57'	19.11'	S 84°32'58" E	05°45'52"
9	190.00'	104.81'	53.77'	103.48'	N 65°51'52" W	31°36'20"
10	190.00'	8.21'	4.11'	8.21'	S 47°16'03" E	02°28'38"
11	190.00'	13.37'	6.69'	13.37'	N 48°02'43" W	04°01'58"
12	110.00'	88.03'	46.52'	85.70'	S 68°57'13" E	45°50'59"
13	190.00'	105.34'	54.06'	104.00'	S 64°23'23" E	31°46'02"
14	190.00'	38.48'	19.31'	38.42'	N 86°04'33" W	11°36'19"
15	190.00'	26.82'	13.43'	26.80'	N 84°04'40" E	08°05'13"
16	190.00'	83.21'	42.28'	82.54'	S 67°29'18" W	25°05'31"
17	190.00'	69.51'	35.15'	69.12'	S 44°27'42" W	20°57'42"
18	110.00'	76.89'	40.09'	75.33'	N 68°05'47" E	40°03'01"
19	110.00'	27.05'	13.59'	26.98'	S 41°01'34" W	14°05'25"
20	110.00'	102.03'	55.02'	98.44'	N 61°35'42" E	53°08'42"
21	190.00'	60.05'	30.28'	59.80'	N 43°02'04" E	18°06'26"
22	190.00'	119.64'	61.88'	117.68'	N 70°07'40" E	36°04'47"
23	110.00'	103.94'	56.22'	100.12'	S 61°03'04" W	54°08'26"
24	190.00'	179.54'	97.10'	172.93'	N 61°03'04" E	54°08'26"
25	190.00'	152.04'	80.36'	148.02'	S 68°57'13" E	45°50'59"
26	110.00'	88.03'	46.52'	85.70'	N 68°57'13" W	45°50'59"
27	190.00'	137.30'	71.80'	134.33'	S 66°43'49" E	41°24'10"
28	190.00'	20.01'	10.02'	20.00'	N 54°02'20" E	6°02'02"
29	110.00'	104.03'	56.27'	100.20'	N 61°04'27" E	54°11'12"

DATE	REVISIONS
2-22-94	
8-12-94	REVISE AREAS

JAYCOX ROAD SUBDIVISION No. 1  
PART OF ORIGINAL AVON TOWNSHIP SECTION No. 19  
CITY OF AVON LAKE, LORAIN COUNTY, OHIO

KS ASSOCIATES, INC.  
ENGINEERS/SURVEYORS  
424 Middle Avenue  
P.O. Box 89  
Elyria, Ohio 44036  
ELYRIA (216) 322-6317 \* LORAIN (216) 244-5757

SHEET 2 OF 2  
DATE 8-3-93  
92515