

287582

UNIVERSITY OAKS SUBDIVISION NO. 8
P.V. 51 PG. 32

LINDSAY COURT 60'

EX. 10' UTILITY EASEMENT

$\Delta = 18'28'20"$
 $R = 370.00'$
 $T = 60.17'$
 $L = 119.29'$
 $C = 118.77'$
 $CB = S 08'26'46" E$

HIGHLAND PARK DRIVE 60'

BRIDGEPORT DRIVE 60'

EX. 10' UTILITY EASEMENT

295.02'

VILLAS AT HIGHLAND PARK CONDOMINIUMS PHASE 1
P.V. 52 PG. 28-30

N 17°40'55" W
131.30'

1 FINISHED FLOOR
754.60

3 FINISHED FLOOR
754.95

5 FINISHED FLOOR
754.95

222

2 FINISHED FLOOR
754.60

11 FINISHED FLOOR
754.83

7 FINISHED FLOOR
754.87

221

POND

12 FINISHED FLOOR
754.72

8 FINISHED FLOOR
754.87

220

PHASE 2
1.6154 AC.

13 FINISHED FLOOR
754.72

9 FINISHED FLOOR
754.87

219

DALE YOST CONSTRUCTION COMPANY
O.R.V. 774 PG. 901
2.2992 AC.
REMAINDER

14 FINISHED FLOOR
754.72

10 FINISHED FLOOR
754.87

218

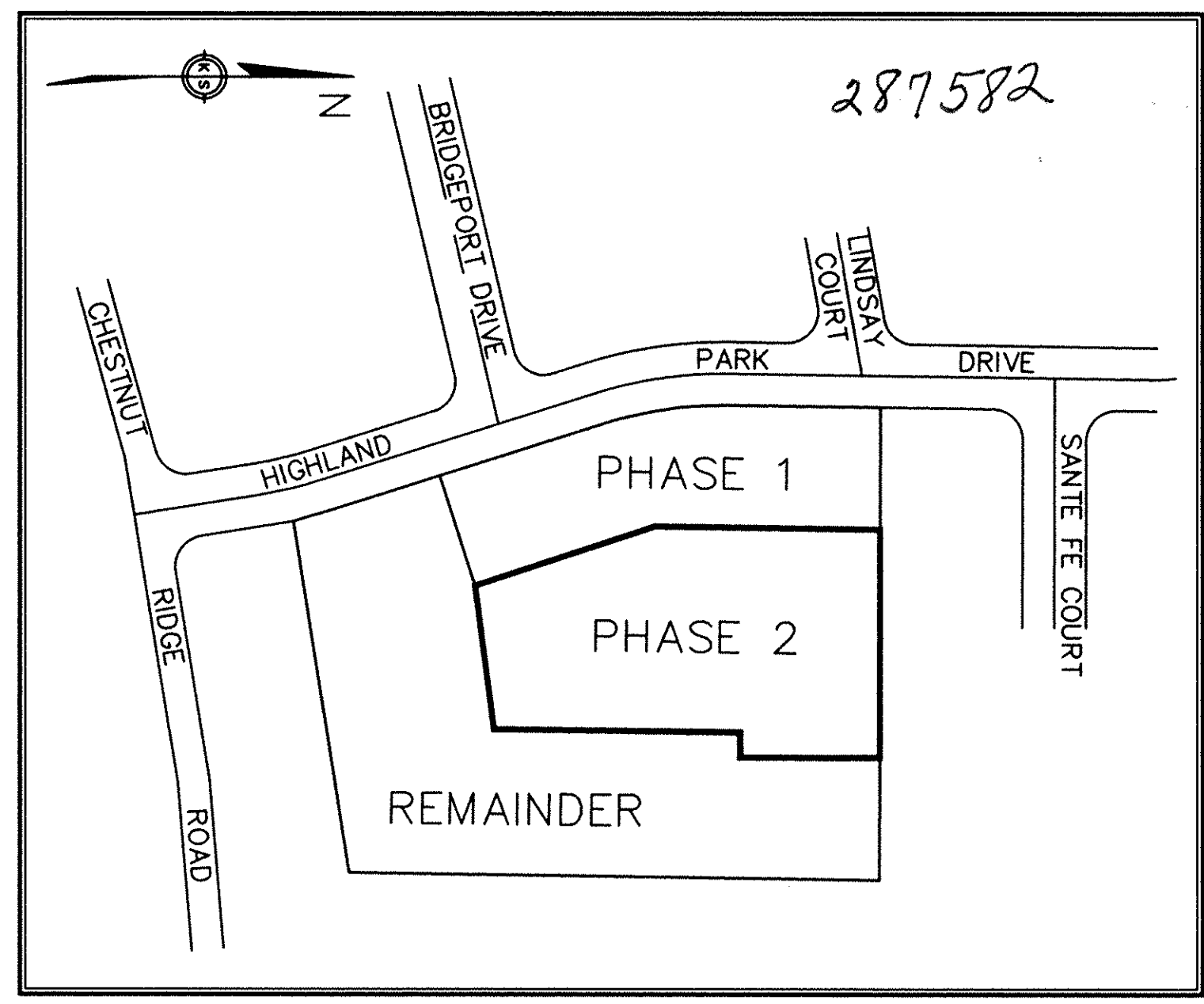
MARY K. NOONAN
O.R.V. 637 P. 885

CITY OF ELYRIA
CARLISLE TWP.

441.73'

I.P. FD.

ELYRIA EAST
LITTLE LEAGUE
O.R.V. 259 P. 563

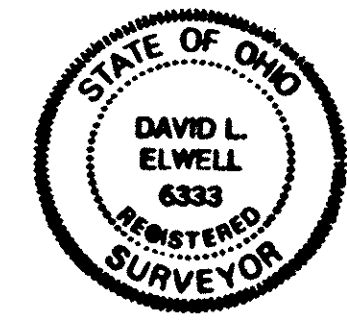


AREA MAP - NO SCALE

CERTIFICATION

THIS IS TO CERTIFY THAT THE ATTACHED DRAWINGS CORRECTLY REPRESENT THE BUILDINGS AS CONSTRUCTED AND THAT THERE ARE NO ENCROACHMENTS ON ADJUTING PROPERTIES.

DAVID L. ELWELL
REG. SURVEYOR NO. 6333

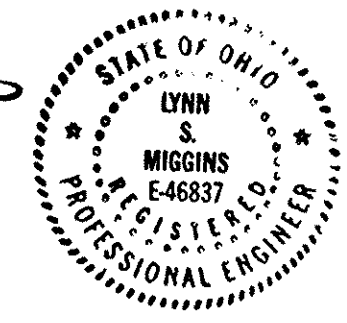


Received for record APR 19 1994
Book R.M. In P.L.A. RECORD
VOL. 53 MARY ANN JAMISCH
PAGE 13 Lorain County Records

LORAIN COUNTY RECORDER

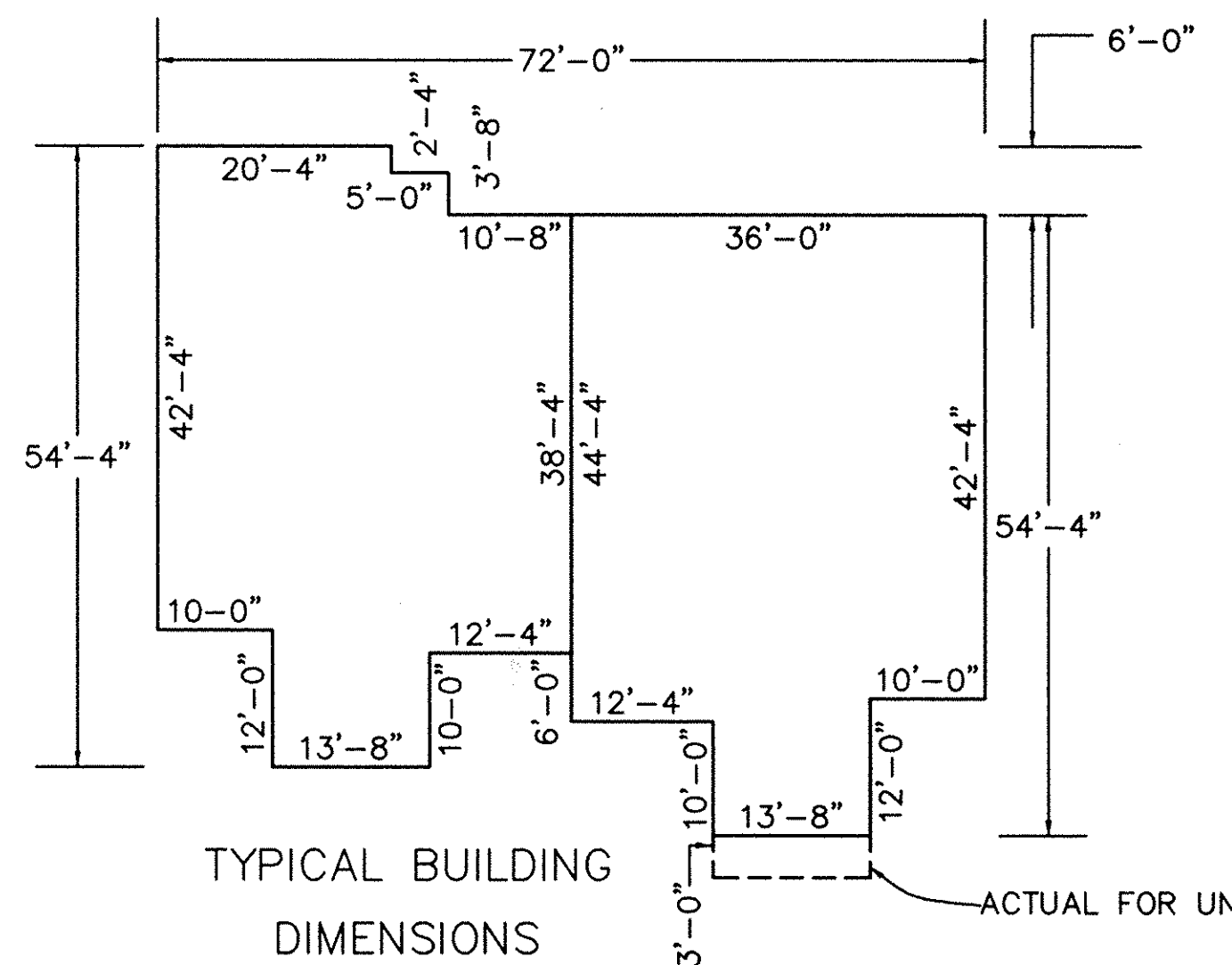
129.60 H.R.
Box: L.C.T.
(L.H.)

LYNN S. MIGGINS
REG. ENGINEER NO. 46837

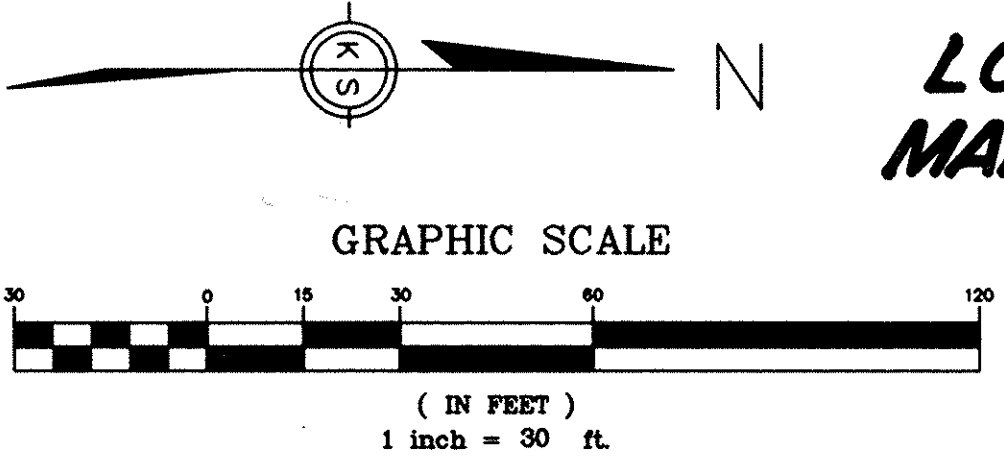


TRANSMITTED IN COMPLIANCE WITH SEC. 319.002 OHIO REV. CODE
APR 19 1994
JULIAN A. PLOJ
LORAIN COUNTY AUDITOR

LORAIN COUNTY AUDITOR



UNIT	AREA	% OWNER
1	1717 SF	7.1180
2	1738 SF	7.2050
3	1738 SF	7.2050
4	1717 SF	7.1180
5	1717 SF	7.1180
6	1717 SF	7.1180
7	1738 SF	7.2050
8	1717 SF	7.1180
9	1738 SF	7.2050
10	1717 SF	7.1180
11	1717 SF	7.1180
12	1738 SF	7.2050
13	1717 SF	7.1180
14	1738 SF	7.2050



DATE	REVISIONS
4-11-94	
DRAWN BY: JEC	
CH'D BY: DLH	
F.B. 183	
DWG. NAME: 92814 SURV MAP	

VILLAS AT HIGHLAND PARK
CONDOMINIUMS PHASE 2
PART OF CARLISLE TOWNSHIP SECTION 5
CITY OF ELYRIA * COUNTY OF LORAIN * STATE OF OHIO

KS ASSOCIATES, INC.
ENGINEERS/SURVEYORS
424 Middle Avenue
P.O. Box 89
Elyria, Ohio 44036
ELYRIA (216) 322-6317 * LORAIN (216) 244-5757

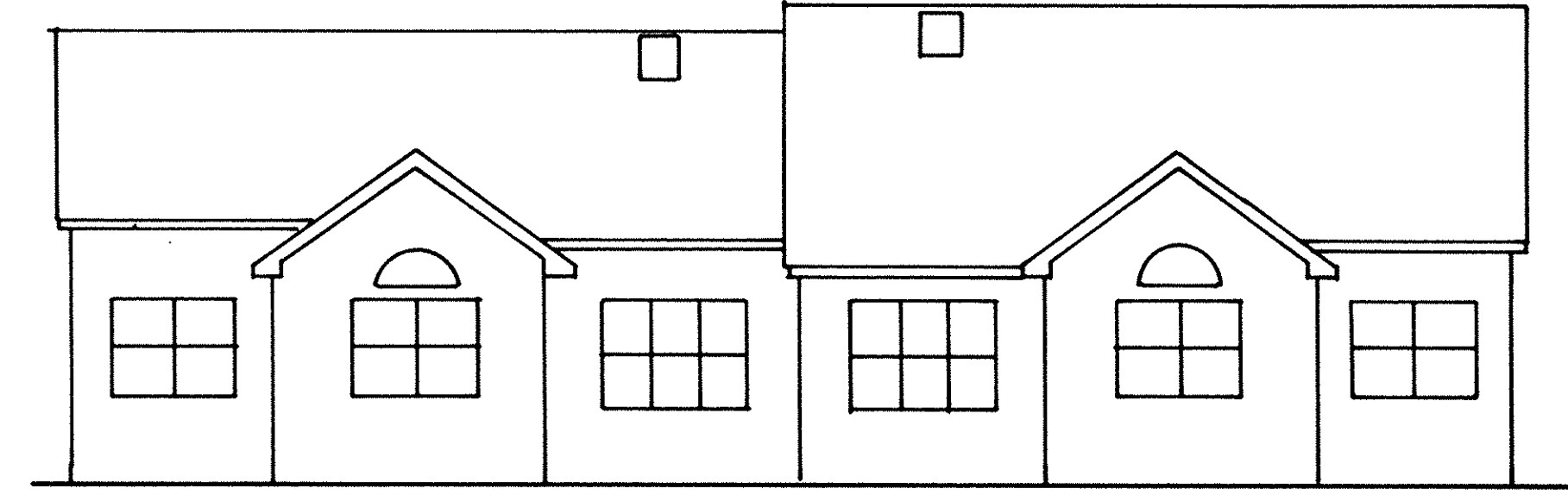
ENGINEERS/SURVEYORS
SHEET 1 OF 3
JOB NO. 92-614CP2

287582

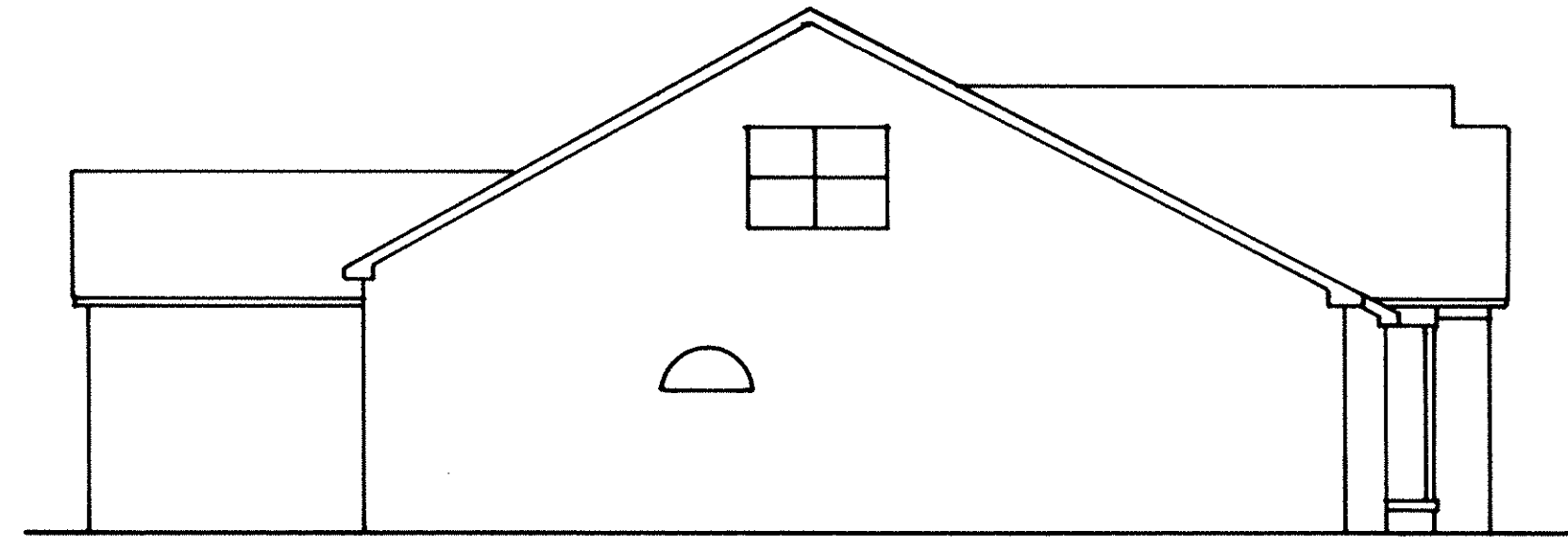
287582



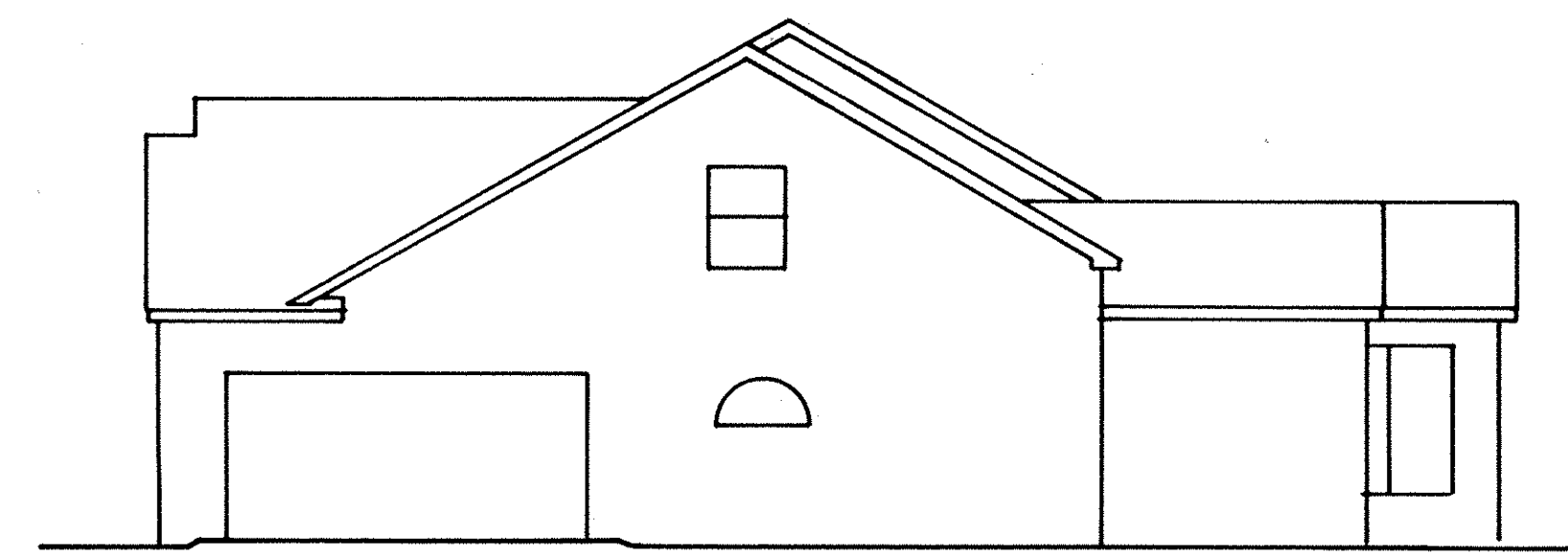
FRONT ELEVATION



REAR ELEVATION



LEFT SIDE ELEVATION



RIGHT SIDE ELEVATION

VILLAS AT HIGHLAND PARK PHASE -2
 EXTERIOR ELEVATIONS