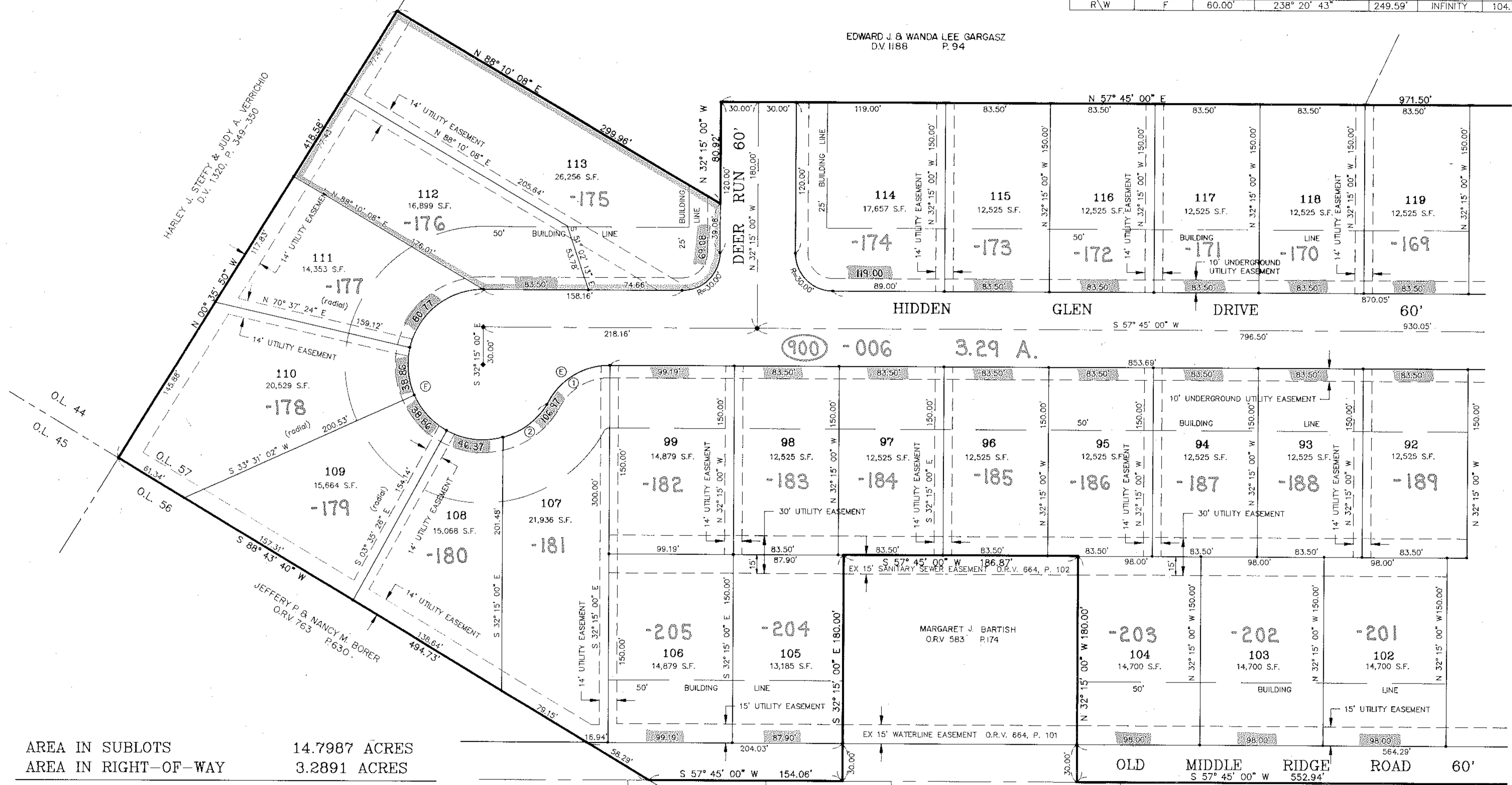


CURVE DATA							
LOT	CURVE	RADIUS	DELTA	LENGTH	TANGENT	CHORD	BEARING
107	1	55.27'	64° 30' 46"	62.23'	34.88'	59.00'	S 25° 29' 37" W
107	2	60.00'	42° 43' 14"	44.74'	23.47'	43.71'	N 20° 45' 54" E
108		60.00'	44° 17' 03"	46.37'	24.41'	45.23'	N 64° 16' 03" E
109		60.00'	37° 06' 28"	38.86'	20.14'	38.18'	S 75° 02' 12" E
110		60.00'	37° 06' 21"	38.86'	20.14'	38.18'	S 37° 55' 47" E
111		60.00'	77° 07' 36"	80.77'	47.83'	74.81'	S 19° 11' 12" W
113		30.00'	90° 00' 00"	47.12'	30.00'	42.43'	S 12° 45' 00" W
114		30.00'	90° 00' 00"	47.12'	30.00'	42.43'	S 77° 15' 00" E
R/W	E	55.27'	64° 30' 46"	62.23'	34.88'	59.00'	S 25° 29' 37" W
R/W	F	60.00'	238° 20' 43"	249.59'	INFINITY	104.78'	S 61° 25' 21" E

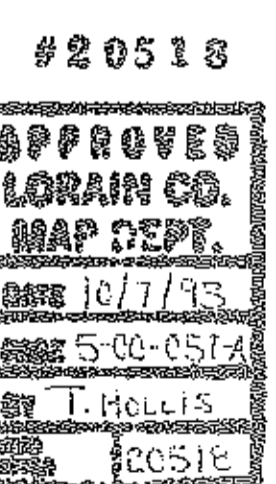
EDWARD J. & WANDA LEE GARGASZ
D.V. 1188 P. 94



AREA IN SUBLOTS 14.7987 ACRES
 AREA IN RIGHT-OF-WAY 3.2891 ACRES
 TOTAL AREA IN SUBDIVISION 18.0878 ACRES

WILLIAM D. & NANCY J. ROLLI O.R.V. 134, P. 72
 GOLDIE M. BARTLOME & JOHN J. KINGSLEY O.R.V. 501, P. 82B
 WILLIAM & CATHLEEN R. JACOBS O.R.V. 22, P. 420
 EDWARD J. & WANDA LEE GARGASZ D.V. 1188 P. 94

SEE SHEET 2 FOR CONTINUATION OF PLAT



- LEGEND:
- ◆ MONUMENT BOX SET
 - IRON PIN SET
 - IRON PIN FOUND

DATE	REVISIONS
3-31-93	4-7-93 REVISED LOTS 112 & 113
4-7-93	4-7-93 REVISED PER LORAIN COUNTY ENGINEERING DEPT. LTR. 3-30-93
4-17-93	4-17-93 REVISED PER LORAIN COUNTY ENGINEERING DEPT. LTR. 4-13-93
9-24-93	9-24-93 REVISED UPDATE OWNERSHIPS

PLAT OF
HILLSIDE SUBDIVISION NUMBER 5
 PART OF AMHERST TOWNSHIP ORIGINAL LOT NO. 57
 TOWNSHIP OF AMHERST, COUNTY OF LORAIN, STATE OF OHIO
 MARCH 1993

KS ASSOCIATES, INC.
 ENGINEERS/SURVEYORS
 424 Middle Avenue
 P.O. Box 89
 Elyria, Ohio 44038
 ELYRIA (216) 322-6317 * LORAIN (216) 244-5757

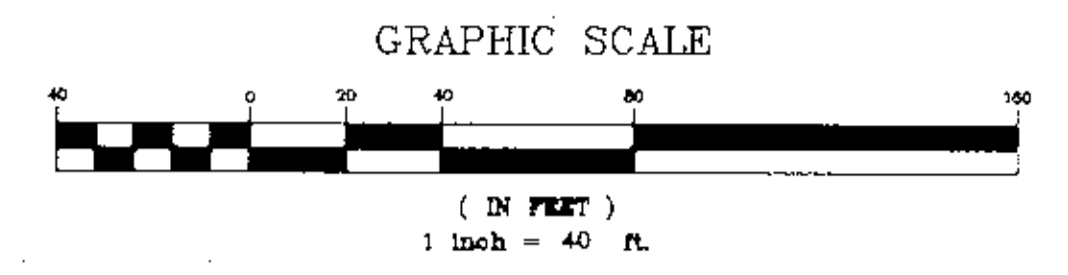
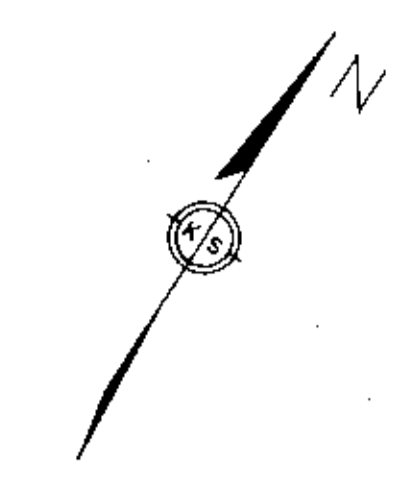
ENGINEERS/SURVEYORS

 ASSOCIATES INCORPORATED
 SHEET 3 OF 3
 JOB NO. 86296-5

5/1/99-71

EDWARD J. & WANDA LEE GARGASZ
O.R.V. 103, P. 472

HILLSIDE SUBDIVISION NUMBER 4
P.V. 47
P. 77 & 78



SEE SHEET 3 FOR CONTINUATION OF PLAN



- LEGEND:
- ◆ MONUMENT BOX SET
 - IRON PIN SET
 - IRON PIN FOUND

AREA IN SUBLOTS 14.7987 ACRES
 AREA IN RIGHT-OF-WAY 3.2891 ACRES
 TOTAL AREA IN SUBDIVISION 18.0878 ACRES

CURVE DATA							
LOT	CURVE	RADIUS	DELTA	LENGTH	TANGENT	CHORD	BEARING
83		230.00'	07° 23' 38"	29.68'	14.86'	29.66'	N 01° 51' 57" E
84		230.00'	15° 23' 36"	61.79'	31.08'	61.61'	N 13° 15' 34" E
85		230.00'	14° 54' 16"	59.83'	30.09'	59.66'	N 28° 24' 30" E
86		230.00'	21° 53' 22"	87.87'	44.48'	87.34'	N 46° 48' 19" E
87	1	30.00'	90° 00' 00"	47.12'	30.00'	42.43'	S 12° 45' 00" W
87	2	180.00'	08° 06' 23"	25.47'	12.75'	25.45'	S 36° 18' 11" E
88	1	180.00'	10° 47' 05"	33.88'	16.99'	33.83'	S 45° 44' 55" E
88	2	30.00'	71° 06' 32"	37.23'	21.44'	34.89'	S 86° 41' 44" E
90	1	240.00'	06° 04' 16"	25.43'	12.73'	25.42'	S 35° 17' 08" E
90	2	30.00'	90° 00' 00"	47.12'	30.00'	42.43'	N 77° 15' 00" W
CL	1	200.00'	59° 34' 52"	207.98'	114.50'	198.73'	N 27° 57' 34" E
CL	2	210.00'	18° 53' 28"	69.24'	34.94'	68.93'	S 41° 41' 44" E
100	1	30.00'	108° 53' 25"	57.01'	41.97'	48.81'	N 03° 18' 14" E
100	2	240.00'	12° 49' 12"	53.70'	26.96'	53.59'	S 44° 43' 52" E
124		170.00'	33° 00' 12"	97.92'	50.36'	96.57'	N 41° 14' 54" E
125		170.00'	26° 34' 40"	78.86'	40.15'	78.15'	N 11° 27' 28" E
R\W	A	170.00'	59° 34' 52"	176.78'	97.32'	168.92'	N 27° 57' 34" E
R\W	B	230.00'	59° 34' 52"	239.17'	131.67'	228.54'	N 27° 57' 34" E
R\W	C	240.00'	18° 53' 28"	79.13'	39.93'	78.77'	S 41° 41' 44" E
R\W	D	180.00'	18° 53' 28"	59.35'	29.95'	59.08'	S 41° 41' 44" E

OUT OF: 05-00-057-000-156 0.32 A.
 " " " " 160 35.85 A.
 " " " " 161 29.09 A.
 INTO PLAT 65.86 A.
 REMAINDER 05-00-057-000-206 47.77 A.

EDWARD J. & WANDA LEE GARGASZ
O.R.V. 103, P. 472

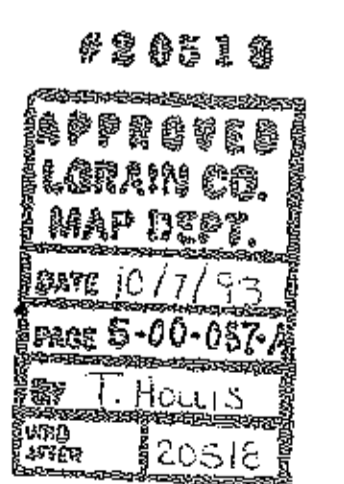
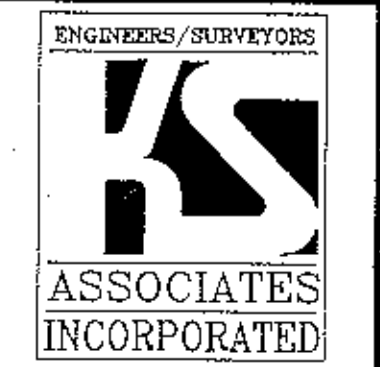
LORAIN COUNTY
BOARD OF COMMISSIONERS
O.R.V. 171, P. 632

C.L. RELOCATED MIDDLE RIDGE ROAD
CR-32

DATE	REVISIONS
3-11-93	4-7-93 REVISED LOTS 124 & 125
	4-7-93 REVISED PER LORAIN COUNTY ENGINEERING DEPT. LTR. 3-30-93
	3-24-93 REVISE, UPDATE OWNERSHIPS

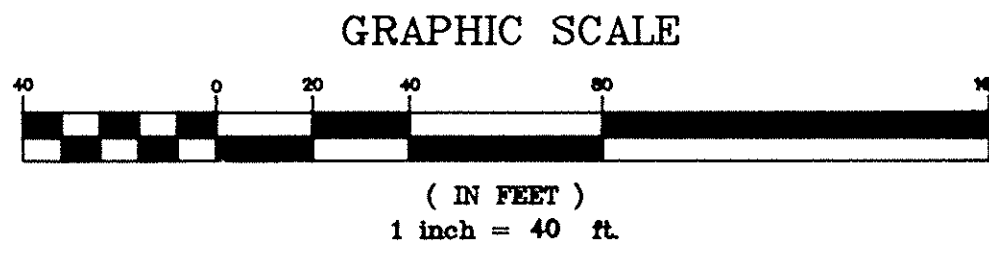
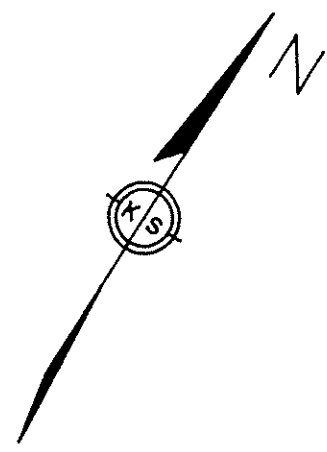
PLAT OF
HILLSIDE SUBDIVISION NUMBER 5
 PART OF AMHERST TOWNSHIP ORIGINAL LOT NO. 57
 TOWNSHIP OF AMHERST, COUNTY OF LORAIN, STATE OF OHIO
 MARCH 1993

KS ASSOCIATES, INC.
 ENGINEERS/SURVEYORS
 424 Middle Avenue
 P.O. Box 89
 Elyria, Ohio 44036
 ELYRIA (216) 322-6317 * LORAIN (216) 244-5757



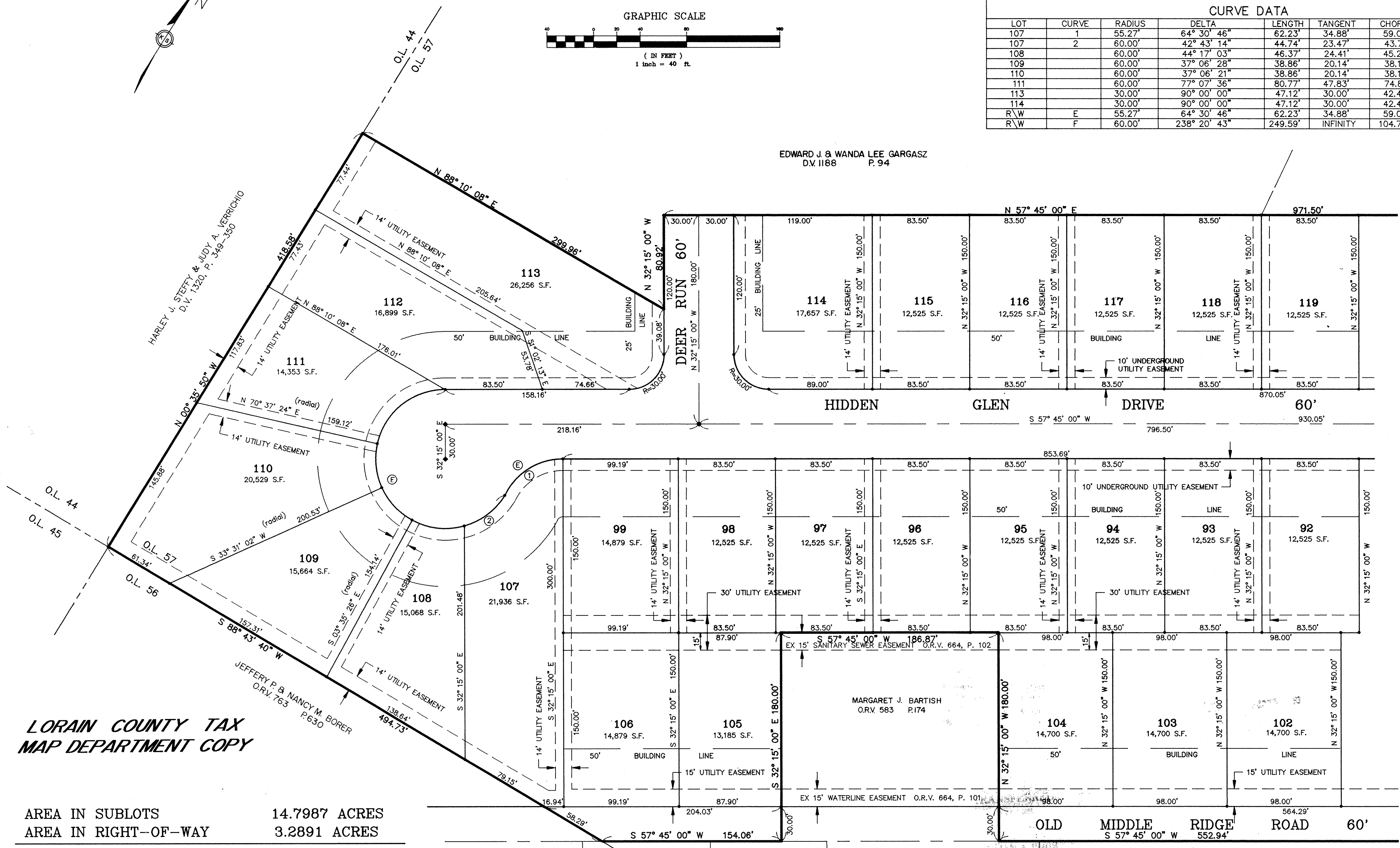
SHEET 2 OF 3
 JOB NO. 86296-5

51/69-71



CURVE DATA							
LOT	CURVE	RADIUS	DELTA	LENGTH	TANGENT	CHORD	BEARING
107	1	55.27'	64° 30' 46"	62.23'	34.88'	59.00'	S 25° 29' 37" W
107	2	60.00'	42° 43' 14"	44.74'	23.47'	43.71'	N 20° 45' 54" E
108		60.00'	44° 17' 03"	46.37'	24.41'	45.23'	N 64° 16' 03" E
109		60.00'	37° 06' 28"	38.86'	20.14'	38.18'	S 75° 02' 12" E
110		60.00'	37° 06' 21"	38.86'	20.14'	38.18'	S 37° 55' 47" E
111		60.00'	77° 07' 36"	80.77'	47.83'	74.81'	S 19° 11' 12" W
113		30.00'	90° 00' 00"	47.12'	30.00'	42.43'	S 12° 45' 00" W
114		30.00'	90° 00' 00"	47.12'	30.00'	42.43'	S 77° 15' 00" E
R\W	E	55.27'	64° 30' 46"	62.23'	34.88'	59.00'	S 25° 29' 37" W
R\W	F	60.00'	238° 20' 43"	249.59'	INFINITY	104.78'	S 61° 25' 21" E

EDWARD J & WANDA LEE GARGASZ
D.V. 1188 P. 94



SEE SHEET 2 FOR CONTINUATION OF PLAT

**LORAIN COUNTY TAX
MAP DEPARTMENT COPY**

AREA IN SUBLOTS 14.7987 ACRES
 AREA IN RIGHT-OF-WAY 3.2891 ACRES
 TOTAL AREA IN SUBDIVISION 18.0878 ACRES

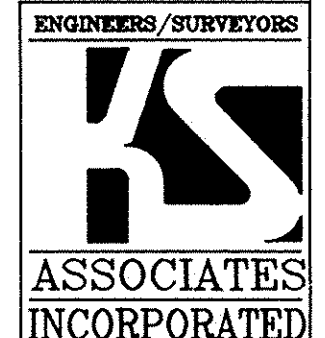
WILLIAM D. & NANCY J. ROLLI O.R.V. 134, P. 72 GOLDIE M. BARTLOME & JOHN J. KINGSLEY O.R.V. 501, P. 828 WILLIAM & CATHLEEN R. JACOBS O.R.V. 22, P. 420 EDWARD J. & WANDA LEE GARGASZ D.V. 1188 P. 94

- LEGEND:
- ◆ MONUMENT BOX SET
 - IRON PIN SET
 - IRON PIN FOUND

DATE	REVISIONS
3-31-93	4-7-93 REVISED LOTS 112 & 113
4-7-93	4-7-93 REVISED PER LORAIN COUNTY ENGINEERING DEPT. LTR. 3-30-93
4-17-93	4-17-93 REVISED PER LORAIN COUNTY ENGINEERING DEPT. LTR. 4-13-93
9-24-93	9-24-93 REVISED UPDATE OWNERSHIPS

PLAT OF
HILLSIDE SUBDIVISION NUMBER 5
 PART OF AMHERST TOWNSHIP ORIGINAL LOT NO. 57
 TOWNSHIP OF AMHERST, COUNTY OF LORAIN, STATE OF OHIO
 MARCH 1993

KS ASSOCIATES, INC.
 ENGINEERS/SURVEYORS
 424 Middle Avenue
 P.O. Box 89
 Elyria, Ohio 44036
 ELYRIA (216) 322-6317 * LORAIN (216) 244-5757



SHEET 3 OF 3
 JOB NO. 86296-5