

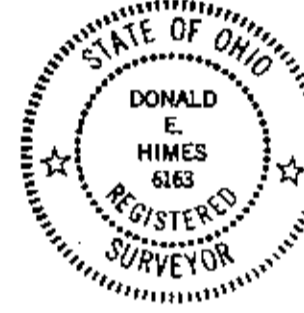
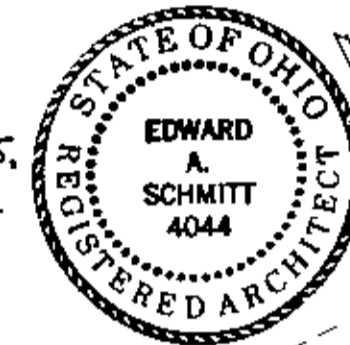
# MILLS CREEK WEST CONDOMINIUMS - PHASE 7

## CITY OF NORTH RIDGEVILLE LORAIN COUNTY OHIO

KNOWN AS BEING A PART OF ORIGINAL RIDGEVILLE TOWNSHIP LOT N<sup>o</sup> 5, 6, 7 & 8, PART OF BLOCK "H" OF MILLS CREEK SECTION "D" AS RECORDED IN VOLUME 25, PAGE 38 AND BEING SHOWN BY THE DEDICATION PLAT RECORDED IN VOLUME 45, PAGE 73

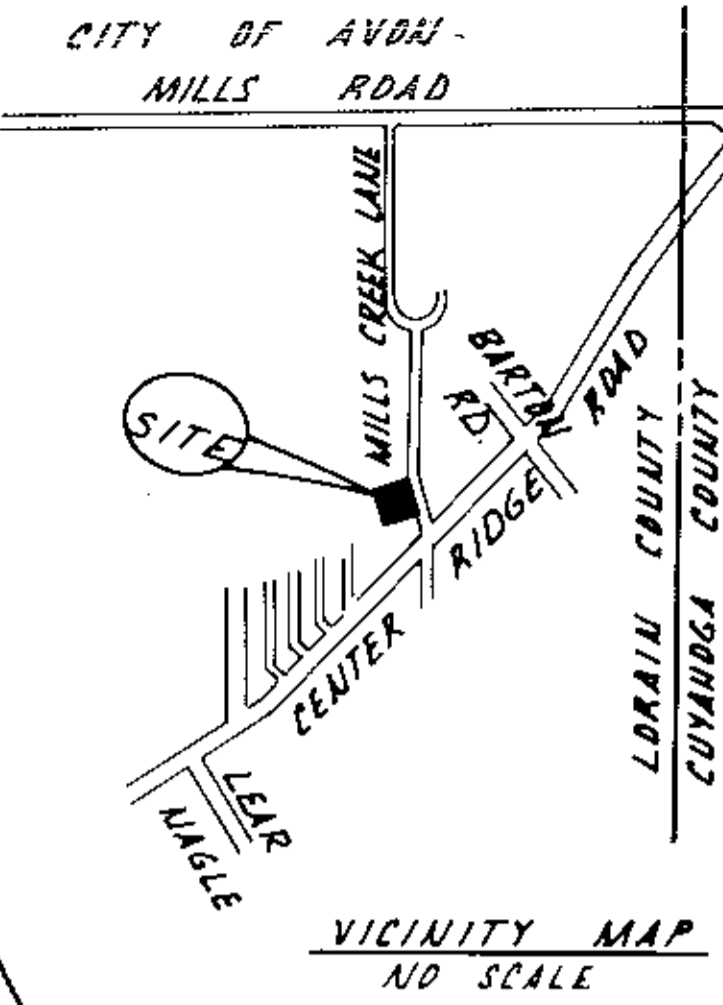
I DECLARE THIS PLAT TO BE A TRUE REPRESENTATION OF THAT PART OF BLOCK "H" OF MILLS CREEK SECTION "D" AS SHOWN ON THE PLAT OF MILLS CREEK WEST CONDOMINIUM AS RECORDED IN VOLUME 45, PAGE 73, OF THE LORAIN COUNTY PLAT RECORDS. DISTANCES ARE GIVEN IN FEET AND DECIMAL PARTS. NORTH DATUM USED ARE BEARINGS OF RECORD. LOCATION OF UNITS SHOWN REFLECT "AS CONSTRUCTED" CONDITIONS AND ARE CORRECT TO THE BEST OF MY PERSONAL AND PROFESSIONAL KNOWLEDGE AND BELIEF.

I EDWARD A. SCHMITT, ARCHITECT, DECLARE THAT THE HEREIN DRAWINGS, SHEET 3 THRU SHEET 5, INCLUSIVE, ACCURATELY DEPICT THE UNITS AS DESIGNED AND CONSTRUCTED, TO THE BEST OF MY PERSONAL AND PROFESSIONAL KNOWLEDGE AND BELIEF.



*Donald E. Himes*  
**Donald E. Himes & Associates**  
 SITE CONSULTANTS • LAND SURVEYORS  
 19611 Westwood Drive, Strongsville, Ohio 44136  
 Telephone: (216) 572-2886 or 238-2665

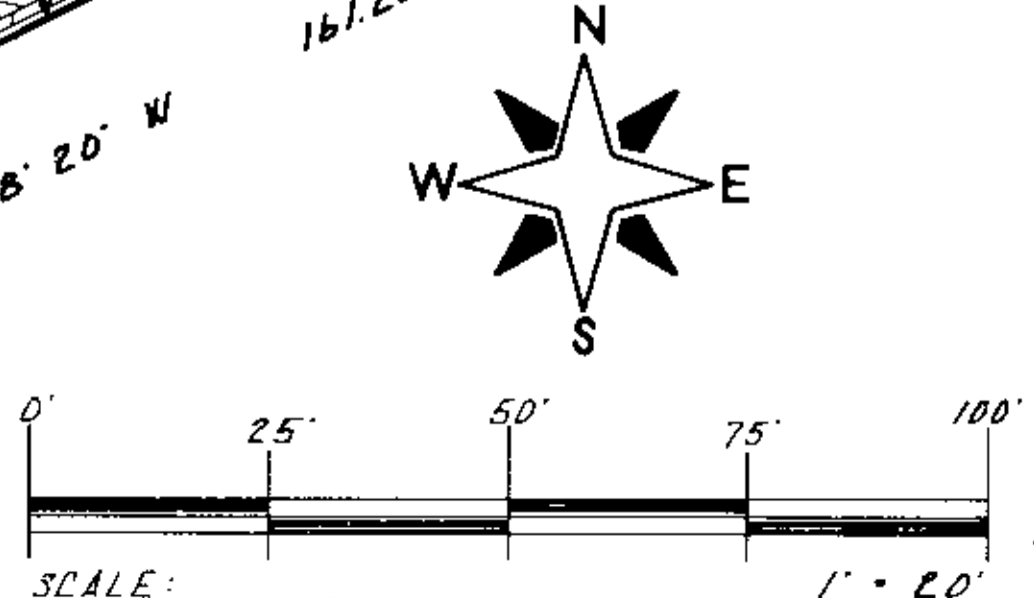
BENCH MARK:  
TOP OF HYDRANT,  
ELEV. 715.75



#20421  
 APPROVED  
 LORAIN CO.  
 MAP DEPT.  
 DATE 7/19/93  
 PAGE 7 OF 10  
 BY T. Himes  
 VOID AFTER 2012

OUT OF  
INTO PLAT 07-00-007-130-103 1.59 A.  
REMAINDER 07-00-007-130-104 1.16 A.

NOTE:  
SEE SHEET 2 FOR BALANCE OF  
CONDOMINIUM PROPERTY, CURVE  
DATA, LAND DISTRIBUTION & LEGEND

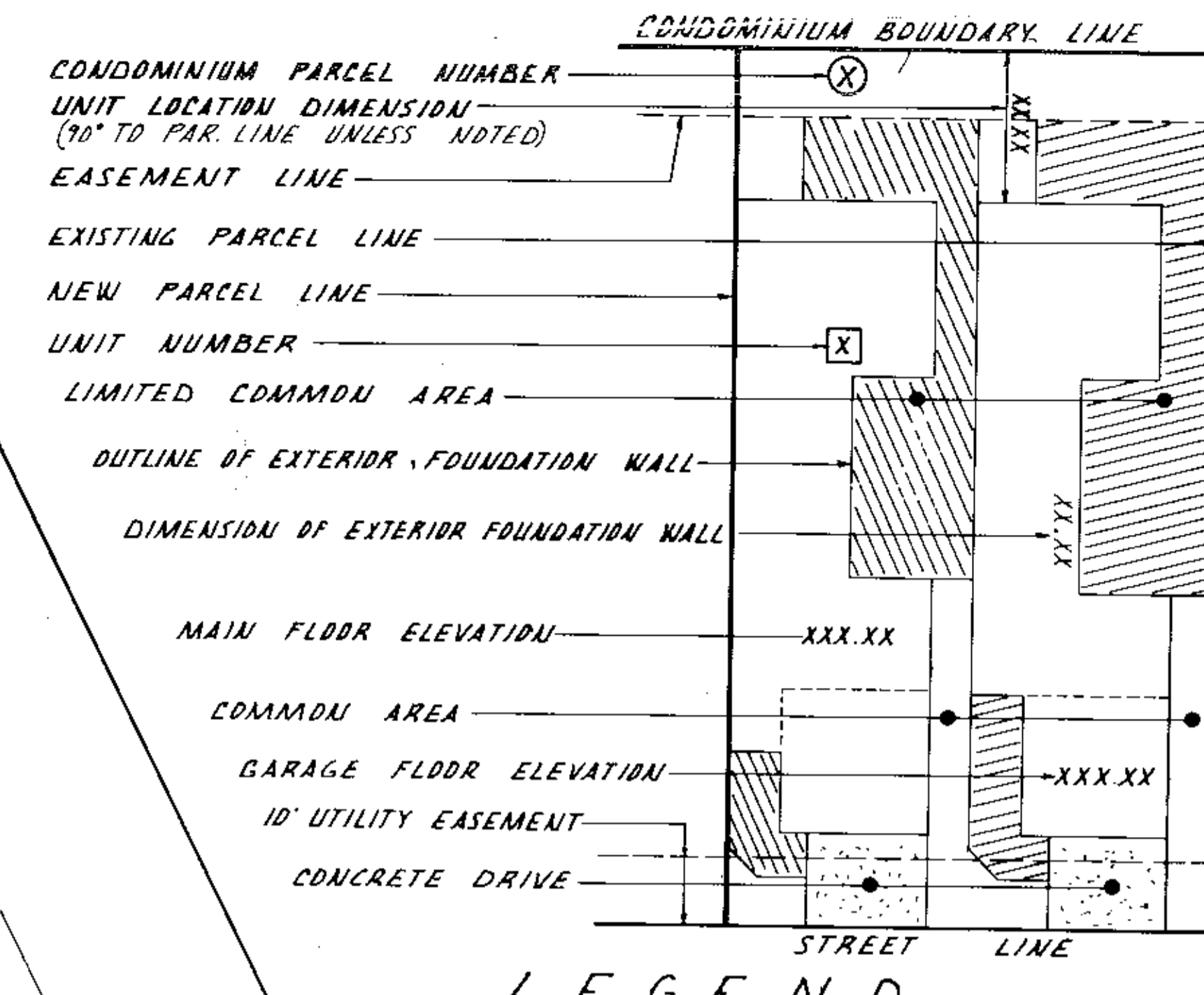


SITE PLAN  
SHEET 1 OF 5

51/10-14

**CURVE DATA:**

1) R = 20.00' A = 90°00'00" L = 31.41' C = 28.28' S 18°08'20" W	2) R = 20.00' A = 49°59'06" L = 17.45' C = 16.90' S 23°52'17" W	3) R = 20.00' A = 49°59'06" L = 17.45' C = 16.90' N 26°07'27" W	4) R = 20.00' A = 90°00'00" L = 31.41' C = 28.28' S 71°51'40" E	5) R = 20.00' A = 90°00'00" L = 31.41' C = 28.28' S 18°08'20" W	6) R = 20.00' A = 49°59'06" L = 17.45' C = 16.90' S 88°08'12" W	7) R = 20.00' A = 49°59'06" L = 17.45' C = 16.90' N 38°08'20" E	8) R = 20.00' A = 90°00'00" L = 31.41' C = 28.28' S 71°51'40" E	9) R = 1070.00' A = 00°32'42" L = 10.18' C = 10.18' S 26°35'16" E	10) R = 96.65' A = 08°19'45" L = 14.04'19" C = 23.74' S 58°58'28" W	11) R = 96.65' A = 14°04'19" L = 23.74' C = 23.68' S 47°46'26" W	12) R = 50.00' A = 117°59'42" L = 102.97' C = 85.71' N 72°08'30" E	13) R = 50.00' A = 103°04'20" L = 89.95' C = 78.30' S 61°35'51" W	14) R = 50.00' A = 34°12'49" L = 45.33' C = 31.08' N 33°00'52" W	15) R = 50.00' A = 51°56'10" L = 45.33' C = 31.08' N 11°03'38" E	16) R = 50.00' A = 66°56'08" L = 58.41' C = 43.79' S 74°22'42" E	17) R = 50.00' A = 35°07'31" L = 30.65' C = 20.17' N 54°35'28" E	18) R = 50.00' A = 32°20'03" L = 28.22' C = 19.17' S 06°06'20" E	19) R = 50.00' A = 26°35'18" L = 23.20' C = 16.90' S 35°34'00" E	20) R = 50.00' A = 11°07'29" L = 9.06' C = 9.04' N 57°34'36" E	21) R = 50.00' A = 50°00'00" L = 31.41' C = 28.28' S 18°08'20" W	22) R = 50.00' A = 50°00'00" L = 31.41' C = 28.28' S 18°08'20" W	23) R = 50.00' A = 50°00'00" L = 31.41' C = 28.28' S 18°08'20" W	24) R = 50.00' A = 50°00'00" L = 31.41' C = 28.28' S 18°08'20" W	25) R = 50.00' A = 50°00'00" L = 31.41' C = 28.28' S 18°08'20" W	26) R = 50.00' A = 50°00'00" L = 31.41' C = 28.28' S 18°08'20" W	27) R = 50.00' A = 50°00'00" L = 31.41' C = 28.28' S 18°08'20" W	28) R = 50.00' A = 50°00'00" L = 31.41' C = 28.28' S 18°08'20" W	29) R = 50.00' A = 50°00'00" L = 31.41' C = 28.28' S 18°08'20" W	30) R = 50.00' A = 50°00'00" L = 31.41' C = 28.28' S 18°08'20" W	31) R = 50.00' A = 50°00'00" L = 31.41' C = 28.28' S 18°08'20" W
---	---	---	---	---	---	---	---	---	---	--	--	---	--	--	--	--	--	--	--	--	--	--	--	--	--	--	--	--	--	--

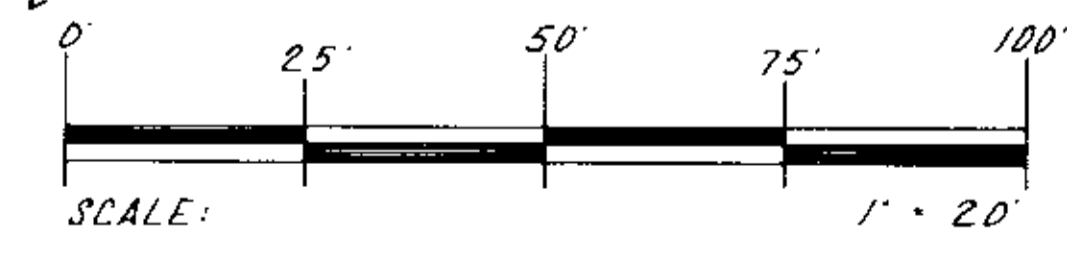
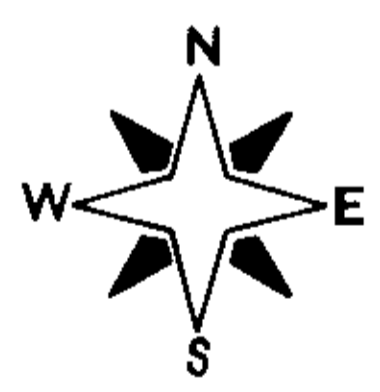


**LEGEND**

**LAND DISTRIBUTION:**

PHASE	PARCEL	SQUARE FEET	STATUS
1	A	11,500	DECLARED
	C	5,472	
	E	10,491	
	G	17,522	
	H	9,373	
	J	9,079	
	K	5,478	
2	L	4,208	
	M	4,725	
	N	6,482	
3	D	9,332	
	P	7,871	
4	Q	13,215	
	R	9,111	
5	I	19,864	
	F	4,634	
6	T	14,073	
	B-1	8,592	UNDECLARED
7	D	7,296	
	F-6	16,686	
TOTAL	F-7	18,762	
		213,766	

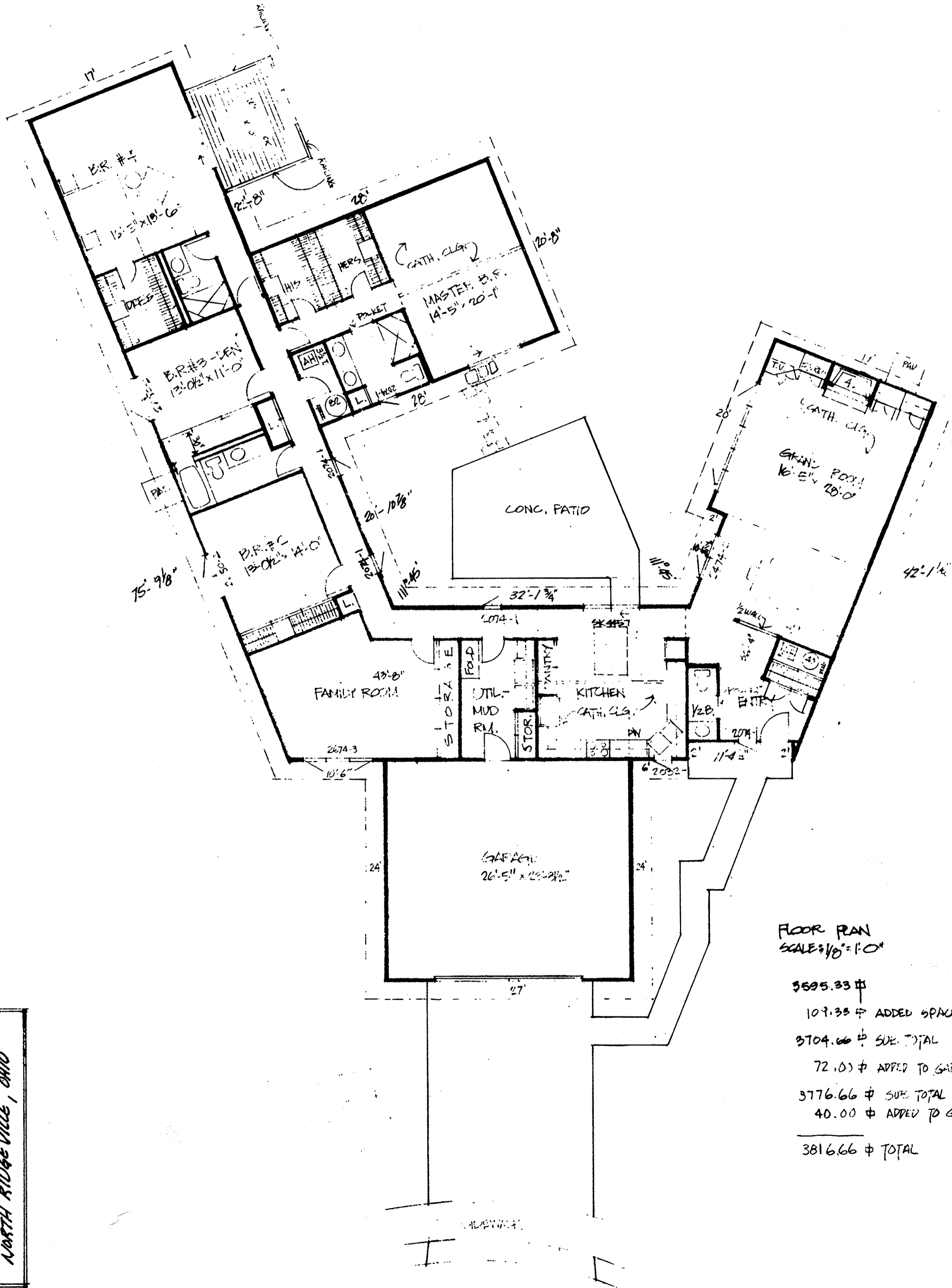
#20421  
APPROVED  
LORAIN CO.  
MAP DEPT.  
DATE 7/13/93  
PAGE 7-00-007-D  
BY T. HOLLIS  
7/13/93  
20421



**MILLS CREEK WEST  
CONDOMINIUMS - PHASE 7  
CITY OF NORTH RIDGEVILLE  
LORAIN COUNTY  
OHIO**

**SITE PLAN  
SHEET 2 OF 5**

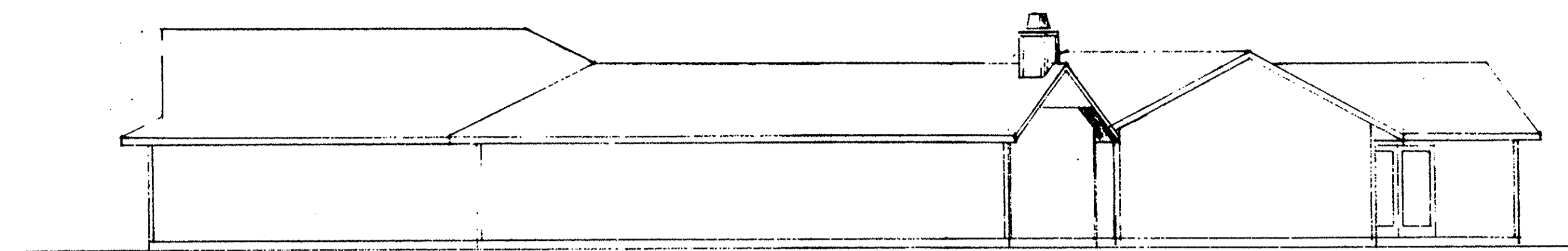
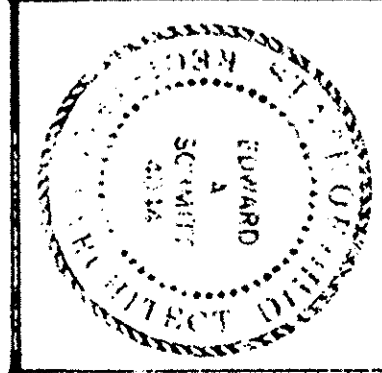
PHASE 6 RECORDED IN VOL. 50, PG. 34 - 37  
PHASE 5 RECORDED IN VOL. 50, PG. 24 - 28  
PHASE 4 RECORDED IN VOL. 49, PG. 68 - 72  
PHASE 3 RECORDED IN VOL. 48, PG. 63 - 64  
PHASE 2 RECORDED IN VOL. 47, PG. 79 - 81  
PHASE 1 RECORDED IN VOL. 47, PG. 29 - 32



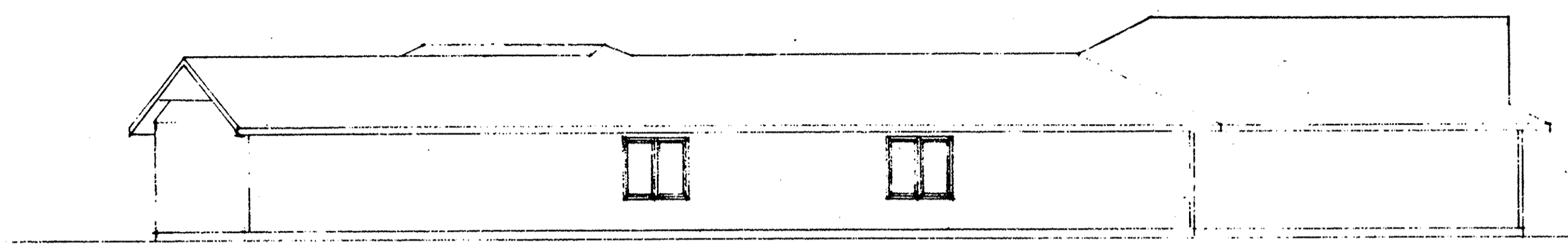
FLOOR PLAN  
SCALE: 1/8" = 1'-0"

5695.33 #  
107.33 # ADDED SPACE  
3704.66 # SUB. TOTAL  
72.00 # ADDED TO GARAGE  
3776.66 # SUB. TOTAL  
40.00 # ADDED TO GRAND RM  
3816.66 # TOTAL

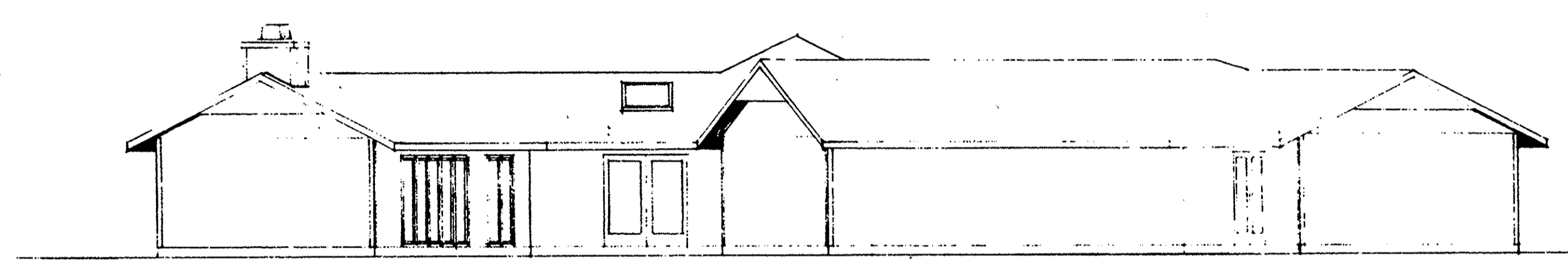
FLOOR PLAN  
S/L 9622  
33125 CEDAR BRANCH CIRCLE  
NORTH RIDGE VILLE, OHIO



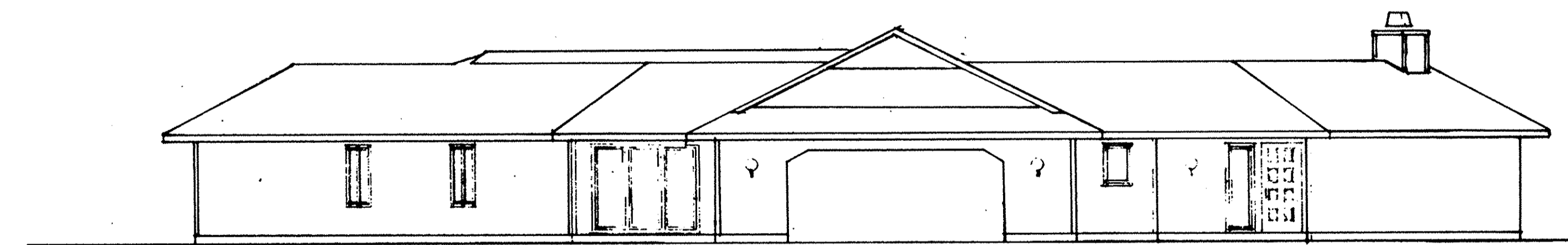
RIGHT SIDE ELEVATION  
SCALE: 1/8" = 1'-0"



LEFT SIDE ELEVATION  
SCALE: 1/8" = 1'-0"

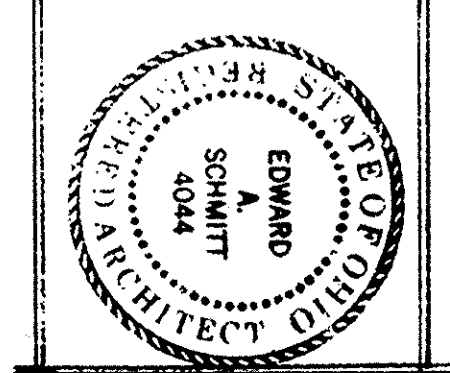


REAR ELEVATION  
SCALE: 1/8" = 1'-0"

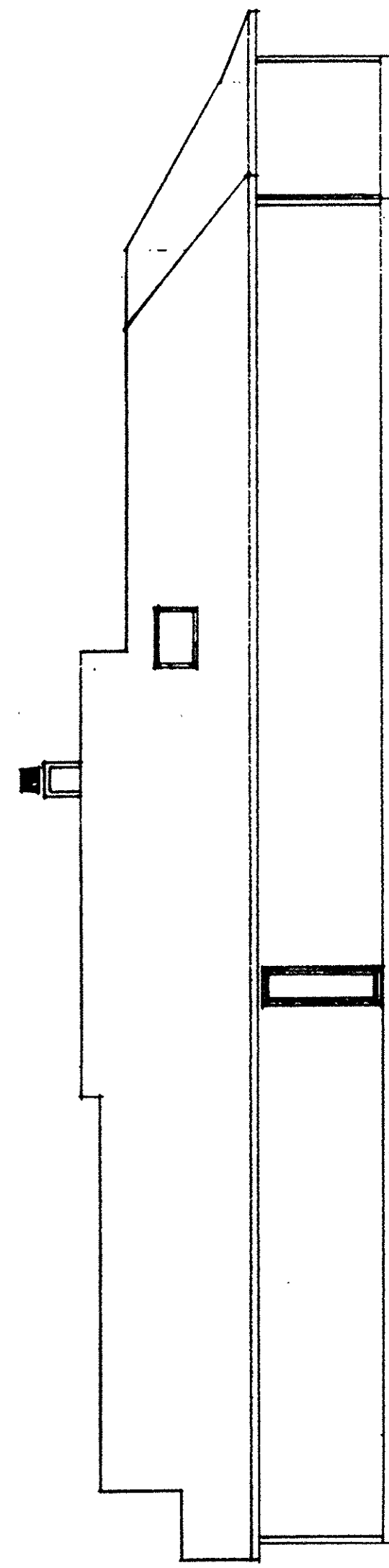


FRONT ELEVATION  
SCALE: 1/8" = 1'-0"

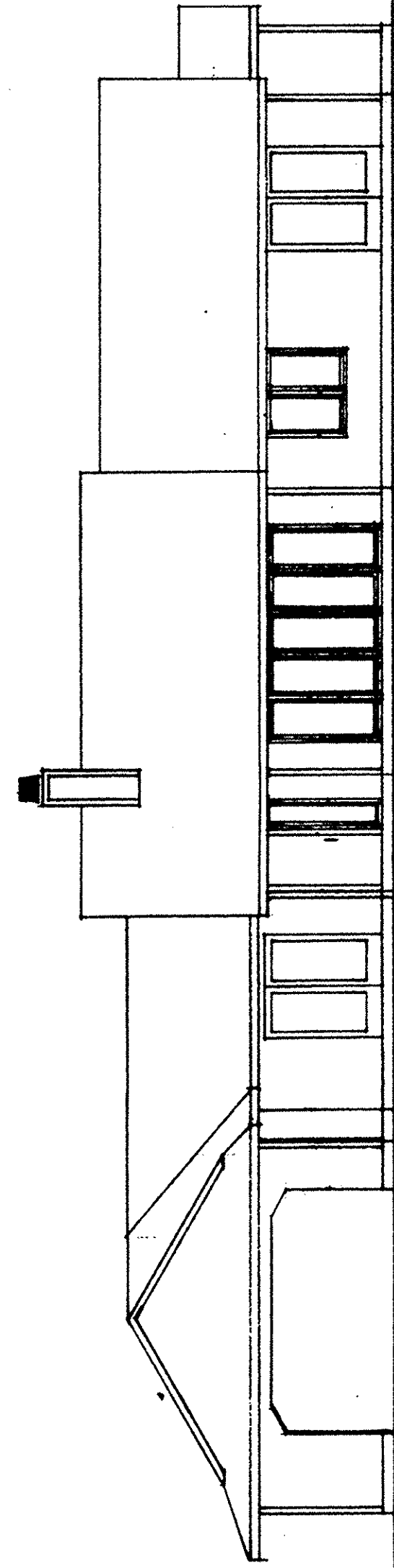
ELEVATIONS  
SUBJECT 9622  
33125 CEDAR BRANCH CIRCLE  
N. RIDGEVILLE, OHIO



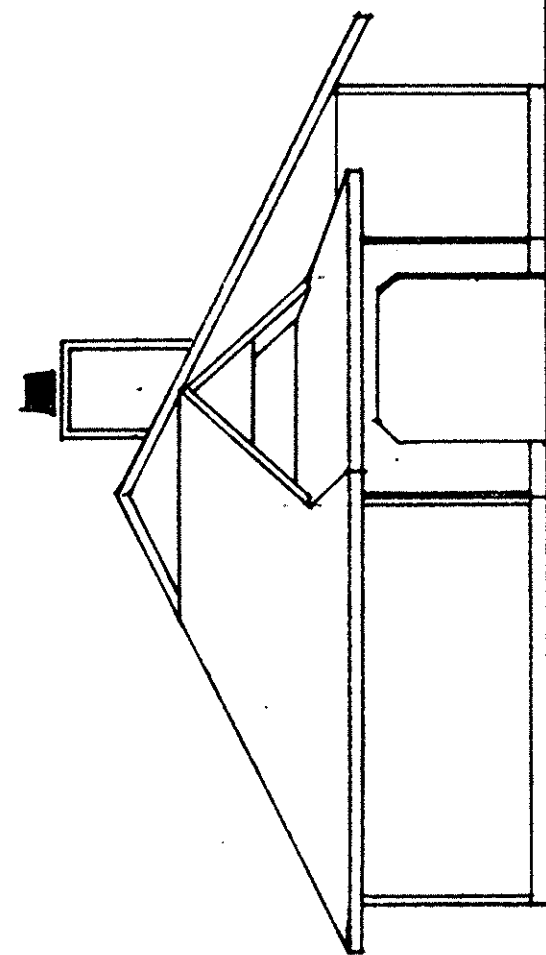
LORAIN COUNTY TAX  
MAP DEPARTMENT COPY



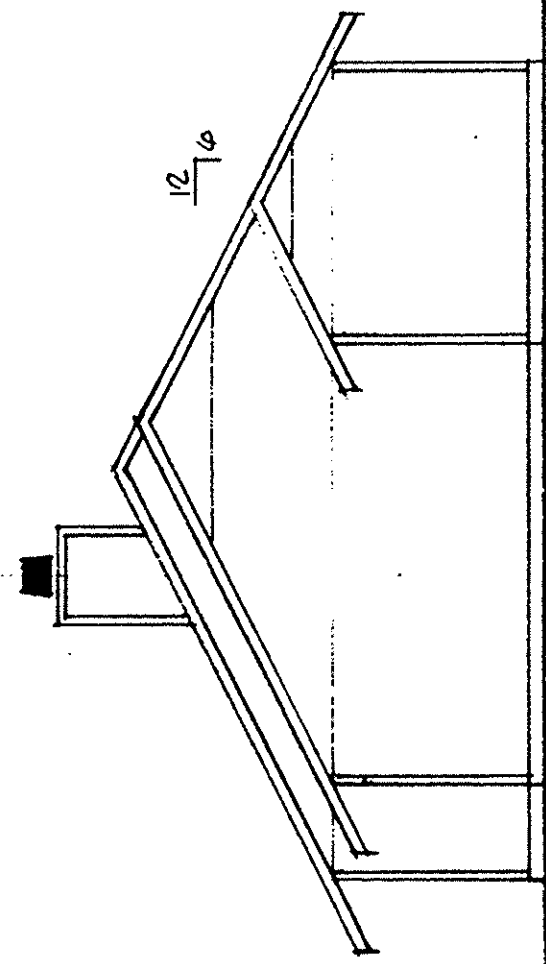
REAR ELEVATION  
SCALE: 1/8"=1'-0"



FRONT ELEVATION  
SCALE: 1/8"=1'-0"

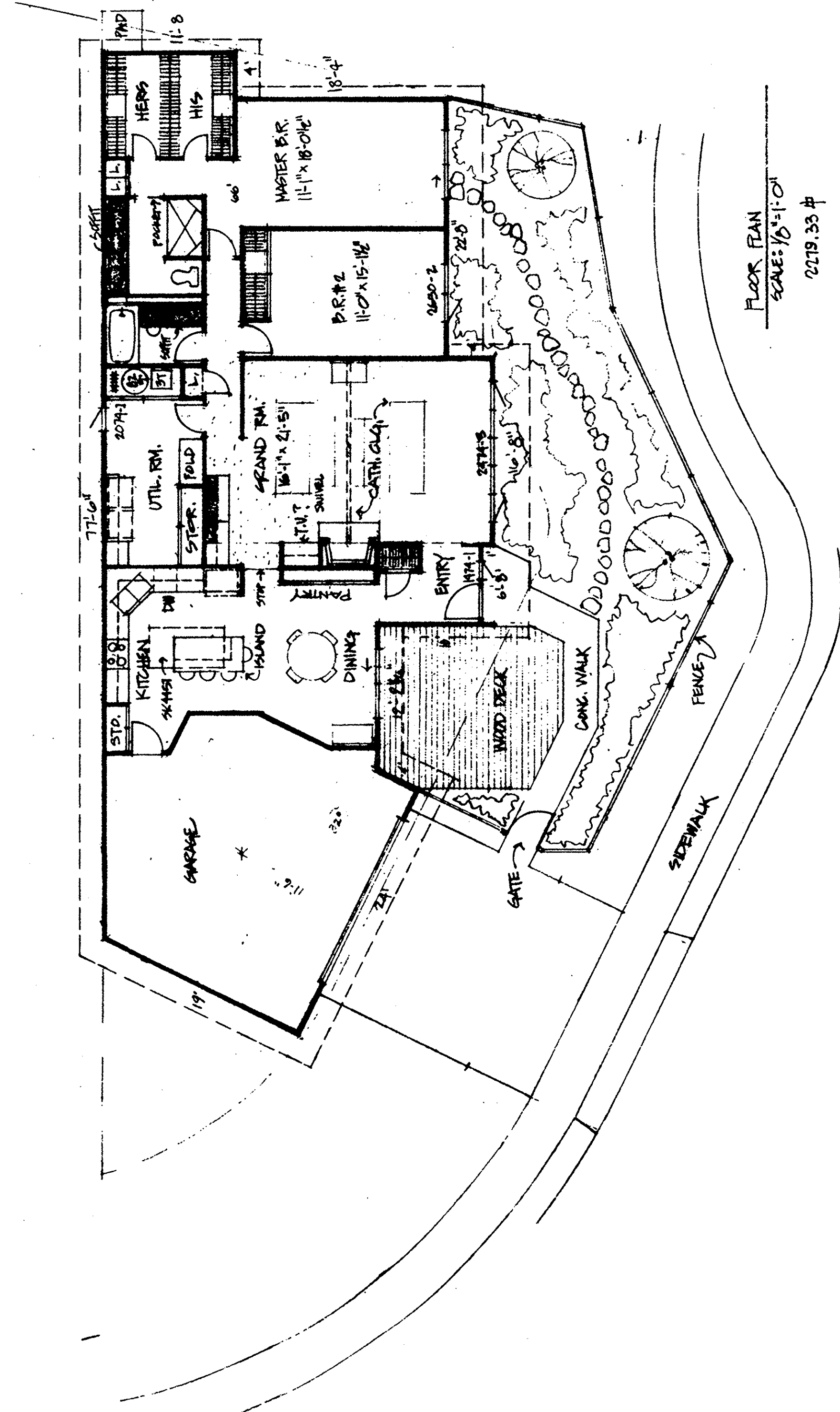
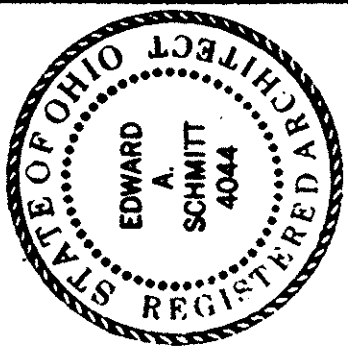


LEFT SIDE ELEVATION  
SCALE: 1/8"=1'-0"

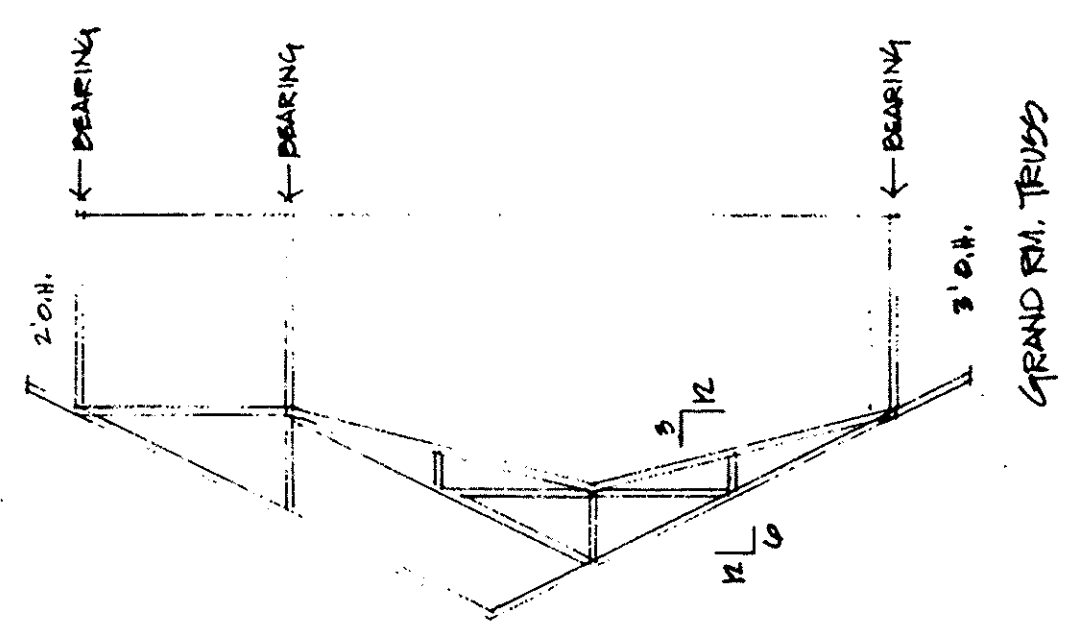


RIGHT SIDE ELEVATION  
SCALE: 1/8"=1'-0"

ELEVATIONS	
24 9621	
39091 CEDAR BRANCH CIRCLE	
NORTH RIDGEVILLE, OHIO	

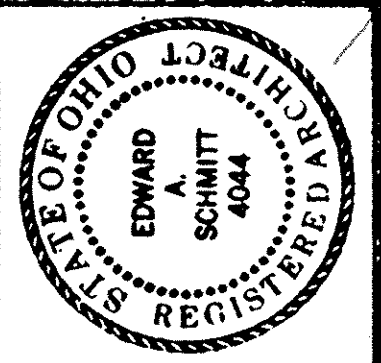


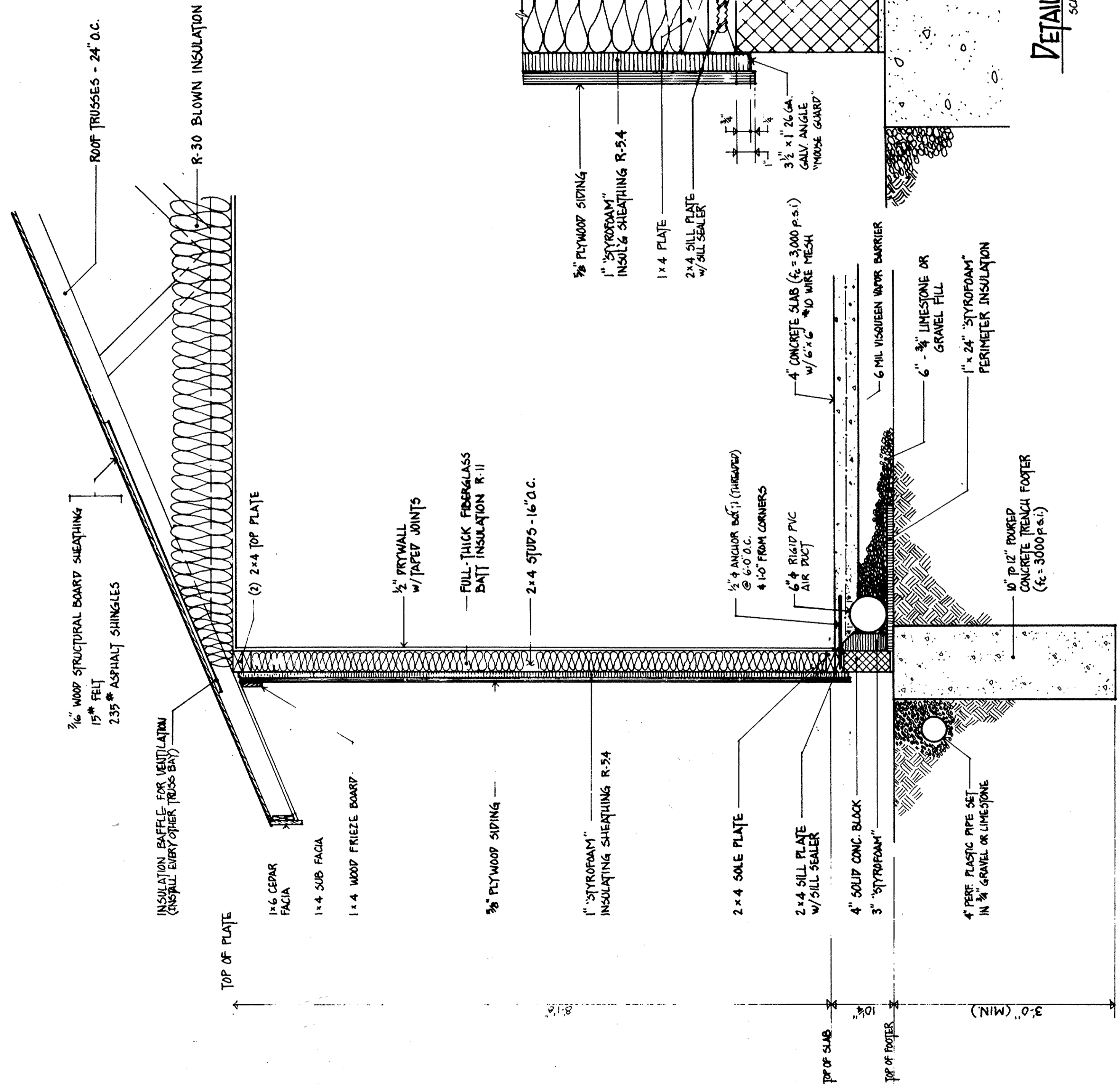
FLOOR PLAN  
SCALE: 1/8"=1'-0"  
2219.33 #



LORAIN COUNTY TAX  
MAP DEPARTMENT COPY

FLOOR PLAN	
24 9621	
39091 CEDAR BRANCH CIRCLE	
NORTH RIDGEVILLE, OHIO	





DETAIL @ SLAB EDGE  
SCALE: 3" = 1'-0"

TYPICAL WALL SECTION  
SCALE: 1" = 1'-0"

NOTE: BOTTOM OF FOOTING  
TO EXTEND TO VIRGIN SOIL

LORAIN COUNTY TAX  
MAP DEPARTMENT COPY

TYPICAL SECTION SHEET  
No 5 of 5