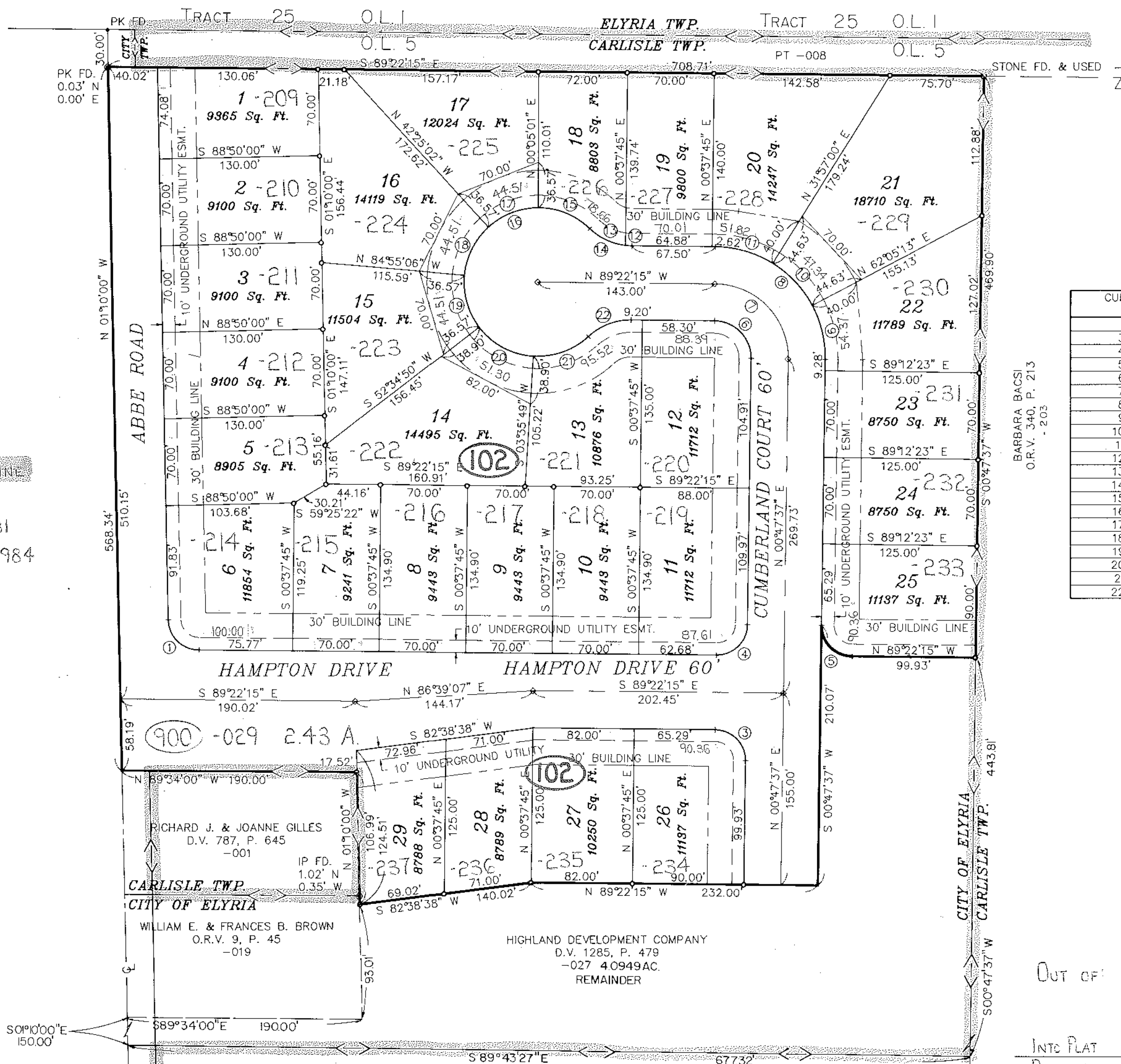


CITY OF ELYRIA



NOTE: BUILDING LINE SETBACK SHALL BE A MINIMUM OF 30' AND VARIES ON SUBLOTS 20, 21 AND 22 AS SHOWN.

CURVE TABLE

CURVE	RADIUS	LENGTH	TANGENT	CHORD	BEARING	DELTA
1	25.00'	38.49'	24.23'	34.80'	S 45°16'08" E	88°12'15"
3	25.00'	39.34'	25.07'	35.41'	S 44°17'19" E	90°09'52"
4	25.00'	39.20'	24.93'	35.30'	S 45°42'41" W	89°50'08"
5	25.00'	39.34'	25.07'	35.41'	N 44°17'19" W	90°09'52"
6	30.00'	47.21'	30.09'	42.49'	S 44°17'19" E	90°09'52"
7	60.00'	94.42'	60.17'	84.97'	N 44°17'19" W	90°09'52"
8	90.00'	141.63'	90.26'	127.46'	S 44°17'19" E	90°09'52"
9	90.00'	45.09'	23.03'	44.62'	N 13°33'35" W	28°42'24"
10	90.00'	47.34'	24.23'	46.80'	N 42°58'54" W	30°08'13"
11	90.00'	49.20'	25.23'	48.59'	N 73°42'38" W	31°19'15"
12	50.00'	5.13'	2.57'	5.12'	N 86°26'02" W	5°52'26"
13	50.00'	32.70'	16.96'	32.12'	N 64°45'47" W	37°28'05"
14	50.00'	37.82'	19.87'	36.93'	S 67°42'00" E	43°20'30"
15	60.00'	45.96'	24.17'	44.84'	N 67°58'22" W	43°53'14"
16	60.00'	279.27'	∞	87.27'	N 0°37'45" E	266°41'01"
17	60.00'	44.51'	23.33'	43.49'	S 68°49'59" W	42°30'04"
18	60.00'	44.51'	23.33'	43.49'	S 26°19'56" W	42°30'04"
19	60.00'	44.51'	23.33'	43.49'	S 16°10'08" E	42°30'04"
20	60.00'	51.30'	27.33'	49.75'	S 61°54'41" E	48°59'02"
21	60.00'	48.50'	25.66'	47.19'	N 70°26'32" E	46°18'34"
22	50.00'	37.82'	19.87'	36.93'	N 68°57'30" E	43°20'30"

AREA IN SUBLOTS 7.1714 Acres
 AREA IN RIGHT-OF-WAY 2.4316 Acres
 TOTAL AREA IN SUBDIVISION 9.6030 Acres

NOTE: A 10' WIDE UTILITY EASEMENT TO OHIO EDISON, COLUMBIA GAS, ALLTEL, AND CONTINENTAL CABLEVISION IS RESERVED ALONG ALL RIGHT OF WAY LINES FOR THE INSTALLATION OF UNDERGROUND LINES.

LEGEND

- IRON PIN SET
- MONUMENT BOX
- IRON PIN FOUND

OUT OF: 10-00-005-102-027 12.46 A.
 " " " " -011 0.44 A.
 " " " " -012 0.44 A.
 INTO PLAT 13.34 A.
 REMAINDER 10-00-005-102-238 3.74 A.

#20385
 APPROVED
 LORAIN CO.
 MAP DEPT.
 DATE 7/9/93
 PAGE 10 OF 105
 BY I. HELLIS
 VOID AFTER 20385

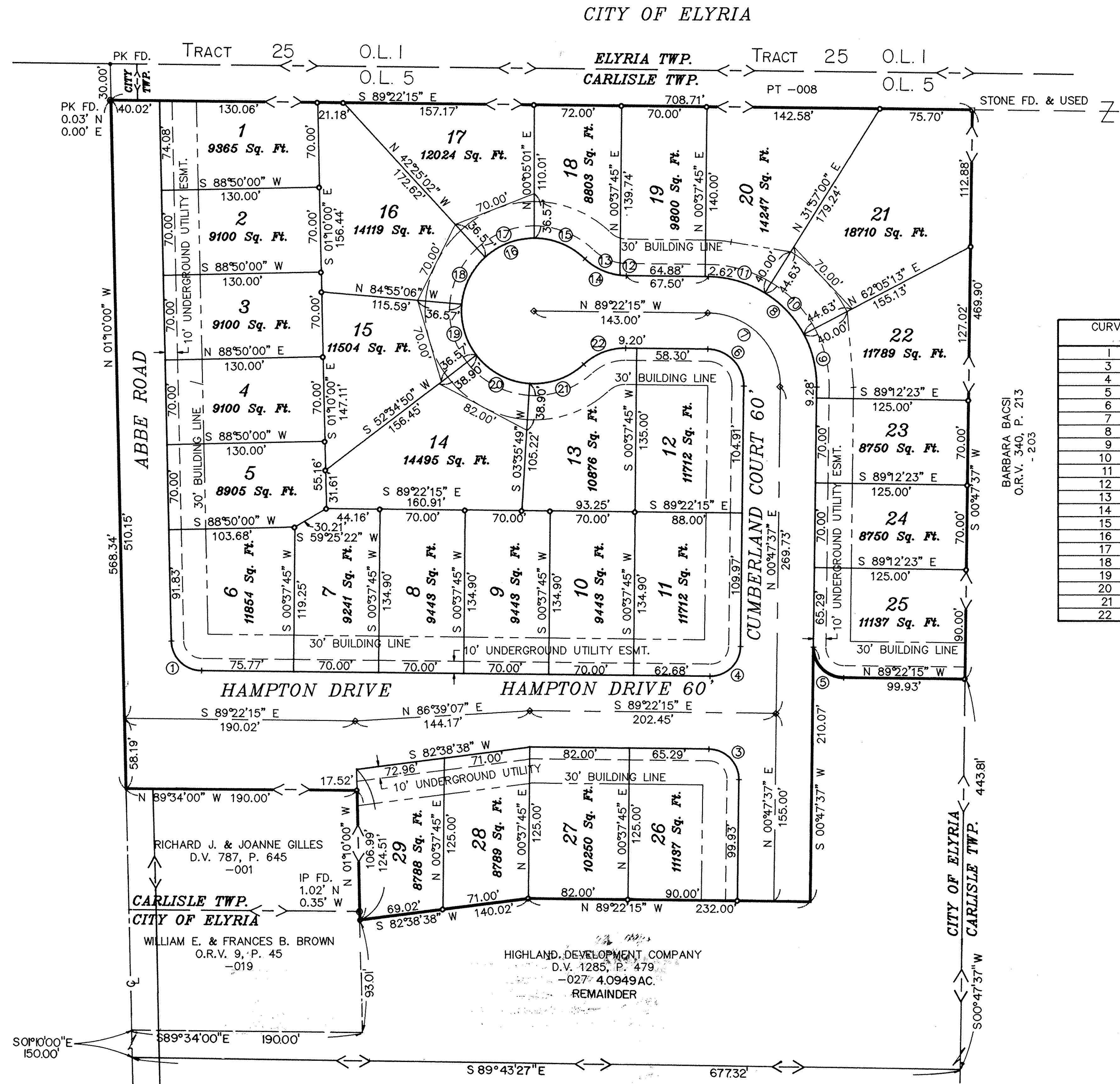
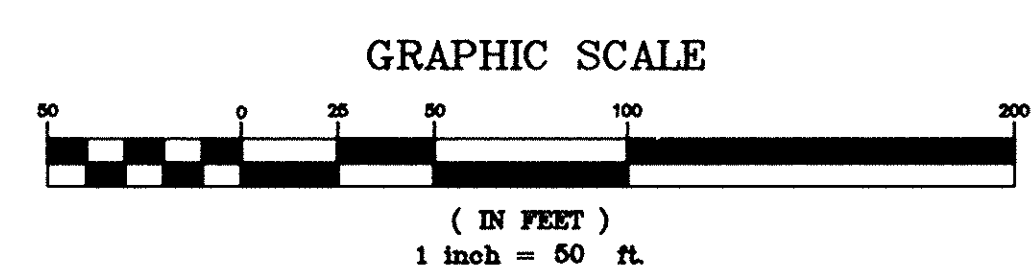
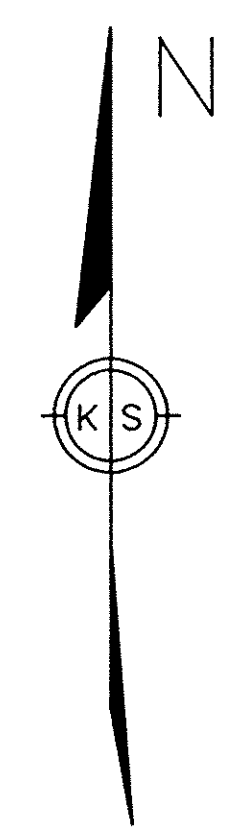
DATE: 1-6-93	2-1-93	REVISED DIMENSIONS, SUBLOTS 20 & 22 AND MISC. REVISIONS
DRAWN BY: MJC	3-5-93	REMOVED BLOCK "A" & ADDED REMAINING AC.
CHKD BY: DLH		
F.B. 170 & 171		
DWG. NAME: 92425/PLAT1		

EAST HAMPTON SUBDIVISION No. 1
 RECORD PLAT
 PART OF CARLISLE TOWNSHIP SECTION No. 5
 CITY OF ELYRIA*COUNTY OF LORAIN*STATE OF OHIO

KS ASSOCIATES, INC.
 ENGINEERS/SURVEYORS
 424 Middle Avenue
 P.O. Box 89
 Elyria, Ohio 44038
 ELYRIA (216) 322-6317 * LORAIN (216) 244-5757



SHEET 2 OF 2
 JOB NO. 92425-1



NOTE: BUILDING LINE SETBACK SHALL BE A MINIMUM OF 30' AND VARIES ON SUBLOTS 20, 21 AND 22 AS SHOWN.

CURVE TABLE

CURVE	RADIUS	LENGTH	TANGENT	CHORD	BEARING	DELTA
1	25.00'	38.49'	24.23'	34.80'	S 45°16'08" E	88°12'15"
3	25.00'	39.34'	25.07'	35.41'	S 44°17'19" E	90°09'52"
4	25.00'	39.20'	24.93'	35.30'	S 45°42'41" W	89°50'08"
5	25.00'	39.34'	25.07'	35.41'	N 44°17'19" W	90°09'52"
6	30.00'	47.21'	30.09'	42.49'	S 44°17'19" E	90°09'52"
7	60.00'	94.42'	60.17'	84.97'	N 44°17'19" W	90°09'52"
8	90.00'	141.63'	90.26'	127.46'	S 44°17'19" E	90°09'52"
9	90.00'	45.09'	23.03'	44.62'	N 13°33'35" W	28°42'24"
10	90.00'	47.34'	24.23'	46.80'	N 42°58'54" W	30°08'13"
11	90.00'	49.20'	25.23'	48.59'	N 73°42'38" W	31°19'15"
12	50.00'	5.13'	2.57'	5.12'	N 86°26'02" W	5°52'26"
13	50.00'	32.70'	16.96'	32.12'	N 64°45'47" W	37°28'05"
14	50.00'	37.82'	19.87'	36.93'	S 67°42'00" E	43°20'30"
15	60.00'	45.96'	24.17'	44.84'	N 67°58'22" W	43°53'14"
16	60.00'	279.27'	∞	87.27'	N 0°37'45" E	266°41'01"
17	60.00'	44.51'	23.33'	43.49'	S 68°49'59" W	42°30'04"
18	60.00'	44.51'	23.33'	43.49'	S 26°19'56" W	42°30'04"
19	60.00'	44.51'	23.33'	43.49'	S 16°10'08" E	42°30'04"
20	60.00'	51.30'	27.33'	49.75'	S 61°54'41" E	48°59'02"
21	60.00'	48.50'	25.66'	47.19'	N 70°26'32" E	46°18'34"
22	50.00'	37.82'	19.87'	36.93'	N 68°57'30" E	43°20'30"

AREA IN SUBLOTS 7.1714 Acres
 AREA IN RIGHT-OF-WAY 2.4316 Acres
 TOTAL AREA IN SUBDIVISION 9.6030 Acres

NOTE: A 10' WIDE UTILITY EASEMENT TO OHIO EDISON, COLUMBIA GAS, ALLTEL, AND CONTINENTAL CABLEVISION IS RESERVED ALONG ALL RIGHT OF WAY LINES FOR THE INSTALLATION OF UNDERGROUND LINES.

LEGEND

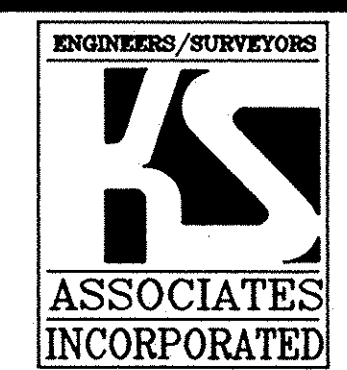
- IRON PIN SET ○
- MONUMENT BOX □
- IRON PIN FOUND ●

LORAIN COUNTY TAX
 MAP DEPARTMENT COPY

DATE: 1-6-93	2-1-93	REVISED DIMENSIONS, SUBLOTS 20 & 22 AND
DRAWN BY: MJC		MISC. REVISIONS
CH'D BY: DLH	3-5-93	REMOVED BLOCK "A" & ADDED REMAINING AC.
F.B. 170 & 171		
DWG. NAME: 92425/PLAT1		

EAST HAMPTON SUBDIVISION No. 1
 RECORD PLAT
 PART OF CARLISLE TOWNSHIP SECTION No. 5
 CITY OF ELYRIA*COUNTY OF LORAIN*STATE OF OHIO

KS ASSOCIATES, INC.
 ENGINEERS/SURVEYORS
 424 Middle Avenue
 P.O. Box 89
 Elyria, Ohio 44036
 ELYRIA (216) 322-6317 * LORAIN (216) 244-5757



SHEET 2 OF 2
 JOB NO. 92425-1