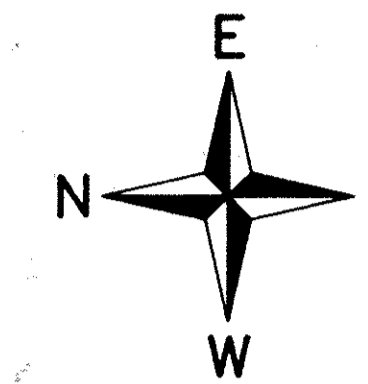
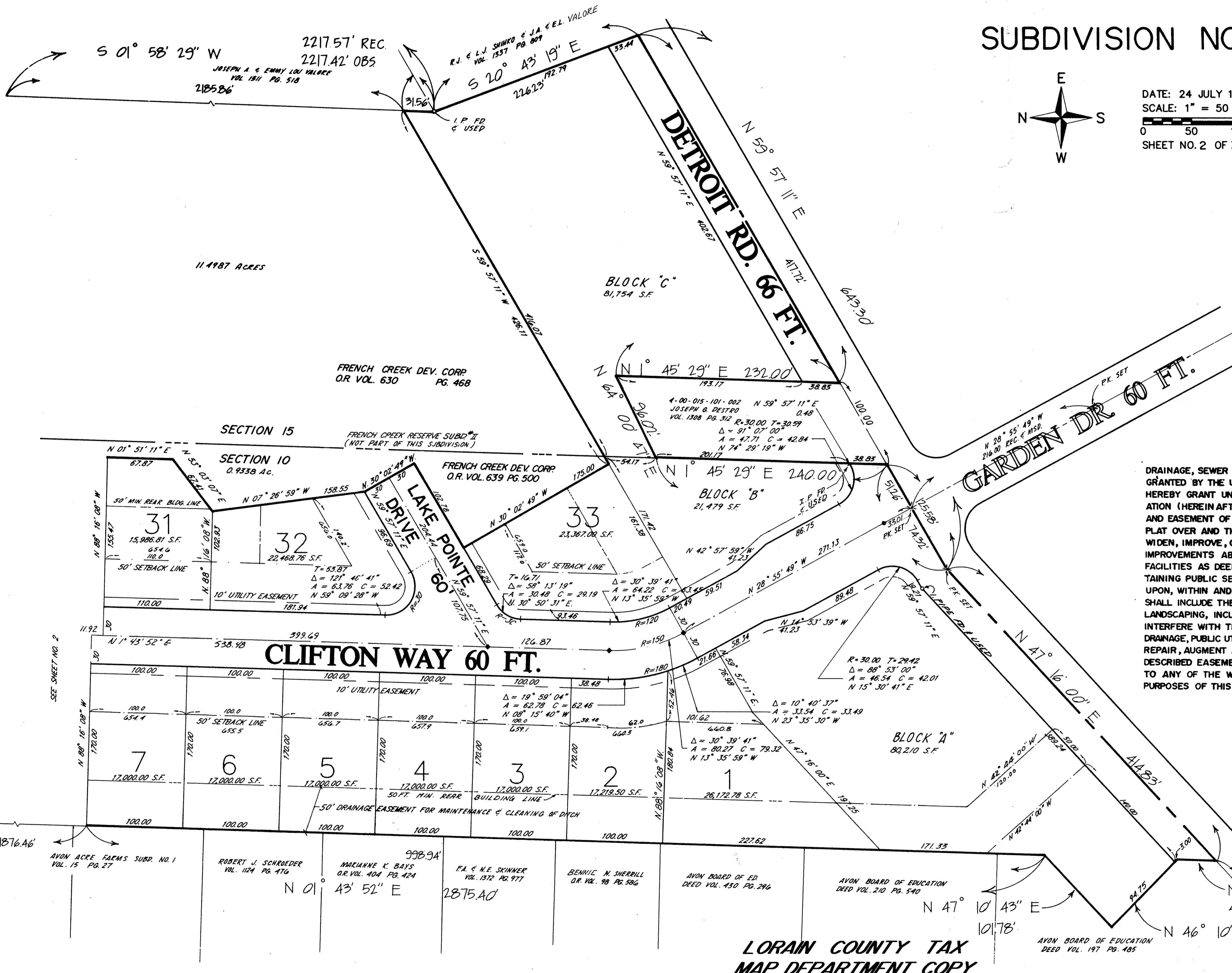


FRENCH CREEK RESERVE

SUBDIVISION NO. 1



DATE: 24 JULY 1992
SCALE: 1" = 50
0 50 100
SHEET NO. 2 OF 3



UTILITY EASEMENT

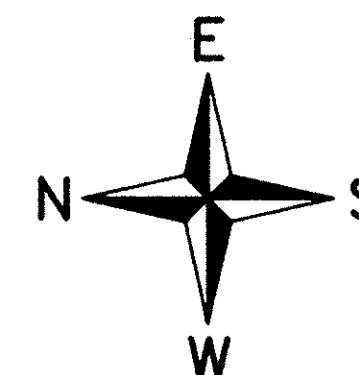
DRAINAGE, SEWER AND UTILITY EASEMENTS AS SHOWN HEREON THIS PLAT ARE GRANTED BY THE UNDERSIGNED OWNERS OF THE WITHIN PLATTED LAND AND DO HEREBY GRANT UNTO THE CITY OF AVON, AN OHIO MUNICIPAL CORPORATION (HEREIN AFTER REFERRED TO AS THE GRANTEE) A PERMANENT RIGHT-OF-WAY AND EASEMENT OF SUCH WIDTH AND LENGTHS AS DEFINED AND SHOWN ON THIS PLAT OVER AND THROUGH SUCH SUBLOTS AS SHOWN HEREON TO CLEAN, DEEPEN, WIDEN, IMPROVE, OPERATE, MAINTAIN, REPAIR, RECONSTRUCT AND RELOCATE SUCH IMPROVEMENTS ABOVE OR BELOW GROUND TO MAINTAIN AND/OR IMPROVE SUCH FACILITIES AS DEEMED NECESSARY OR CONVENIENT BY THE GRANTEE FOR MAINTAINING PUBLIC SERVICES, DRAINAGE AND UTILITIES AS GRANTEE MAY DETERMINE UPON, WITHIN AND ACROSS THE EASEMENT PREMISES. SAID EASEMENT RIGHTS SHALL INCLUDE THE RIGHT, WITHOUT LIABILITY THEREFORE, TO REMOVE TREES AND LANDSCAPING, INCLUDING LAWN, WITHIN SAID EASEMENT PREMISES WHICH MAY INTERFERE WITH THE INSTALLATION, MAINTENANCE, REPAIR OR OPERATION OF SUCH DRAINAGE, PUBLIC UTILITIES AND FACILITIES THE RIGHT TO CLEAN, DEEPEN, WIDEN, REPAIR, AUGMENT AND MAINTAIN PUBLIC DRAINAGE AND SERVICE WITHIN THE ABOVE DESCRIBED EASEMENT PREMISES AND WITH THE RIGHT OF ACCESS AND EGRESS TO ANY OF THE WITHIN SHOWN EASEMENTS FOR EXERCISING ANY OF THE PURPOSES OF THIS EASEMENT GRANT.

LORAIN COUNTY TAX
MAP DEPARTMENT COPY

TAX MAP DEPT. COPY

FRENCH CREEK RESERVE

SUBDIVISION NO. 1



DATE: 24 JULY 1992
SCALE: 1" = 50'
0 50 100
SHEET NO. 3 OF 3

UNDERGROUND EASEMENT

FRENCH CREEK DEV. CORP. THE OWNER OF THE WITHIN PLATTED LAND DOES HEREBY GRANT UNTO THE CLEVELAND ELECTRIC ILLUMINATING COMPANY, CENTURY TELEPHONE COMPANY OF OHIO, AND CABLEVISION, THEIR SUCCESSORS AND ASSIGNEES (HEREINAFTER REFERRED TO AS THE GRANTEE) A PERMANENT RIGHT OF WAY EASEMENT TEN FEET (10') IN WIDTH OVER, UNDER, AND THROUGH ALL SUBLOTS AND ALL LANDS SHOWN HEREON AND PARALLEL WITH ALL STREET LINES TO CONSTRUCT, PLACE, OPERATE, MAINTAIN, REPAIR, RECONSTRUCT AND RELOCATE SUCH UNDERGROUND ELECTRIC AND COMMUNICATION CABLES, DUCTS, CONDUITS, SURFACE OR BELOW GROUND, MOUNTED TRANSFORMERS, PEDESTALS, CONCRETE PADS AND OTHER FACILITIES AS ARE NECESSARY AND CONVENIENT FOR THE GRANTEE TO DISTRIBUTE AND TRANSMIT ELECTRICITY AND COMMUNICATIONS SIGNALS FOR PUBLIC AND PRIVATE USE AT SUCH LOCATIONS AS GRANTEE MAY DETERMINE UPON, WITHIN AND ACROSS THE EASEMENT PREMISES. SAID EASEMENT SHALL INCLUDE THE RIGHT TO INSTALL, MAINTAIN, REPAIR AND AUGMENT ELECTRIC AND COMMUNICATIONS FACILITIES OUTSIDE THE ABOVE DESCRIBED PREMISES AND SHALL ALSO INCLUDE THE RIGHT OF ACCESS, INGRESS AND EGRESS TO AND FROM ANY OF THE WITHIN DESCRIBED PREMISES FOR THE PURPOSE OF EXERCISING ANY OF THE EASEMENTS RIGHTS INDICATED HEREIN. GRANTEE SHALL AT THEIR EXPENSE RESTORE THE LAND TO ITS CONDITION AS IT EXISTED IMMEDIATELY PRIOR TO THE WORK PERFORMED BY GRANTEE, EXCEPT GRANTEE SHALL NOT BE RESPONSIBLE FOR REPLACING OR REPAIRING ANY PERMANENT STRUCTURES, TREES OR SHRUBS WHICH ARE LOCATED WITHIN THE EASEMENT BOUNDARIES AND ARE DAMAGED OR REMOVED AS A RESULT OF WORK PERFORMED AS PROVIDED FOR HEREIN BY GRANTEE. THE SUBLOTS SHALL BE RESTRICTED TO UNDERGROUND UTILITY SERVICE.

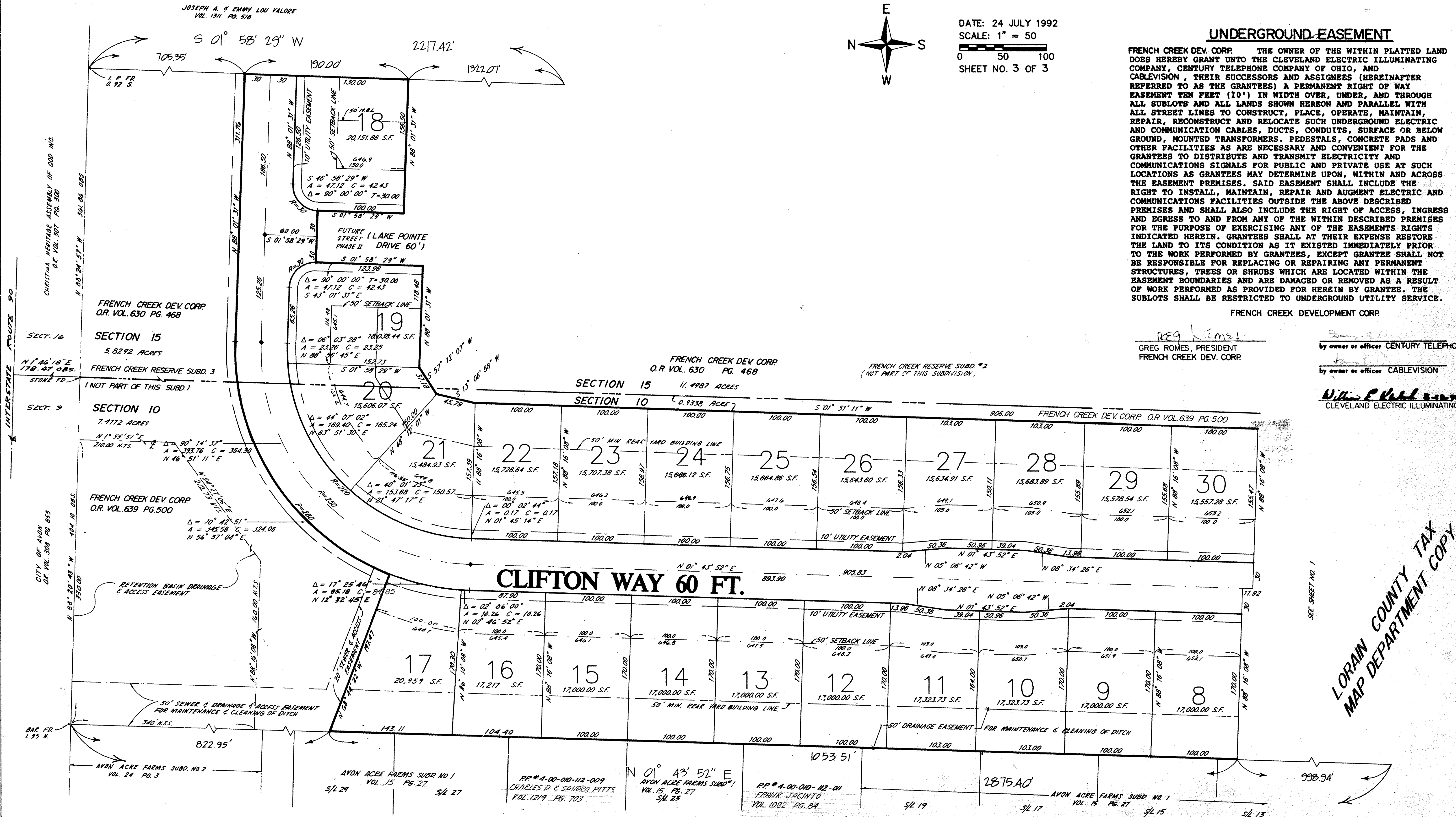
FRENCH CREEK DEVELOPMENT CORP.

GREG ROMES, PRESIDENT
FRENCH CREEK DEV. CORP.

by owner or officer CENTURY TELEPHONE

by owner or officer CABLEVISION

WILLIAM E. KUBAL, JR.
CLEVELAND ELECTRIC ILLUMINATING



SEE SHEET NO. 1

LORAIN COUNTY TAX
MAP DEPARTMENT COPY