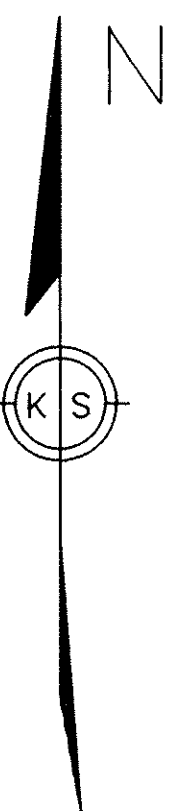


UNIVERSITY OAKS SUBDIVISION NO. 6

PART OF CARLISLE TOWNSHIP SECTION 5
CITY OF ELYRIA, COUNTY OF LORAIN, STATE OF OHIO
AND ALL OF SUBLOTS 107, 108 & 109
OF UNIVERSITY OAKS SUBDIVISION NO. 3
P.V. 47 P. 8 & 9

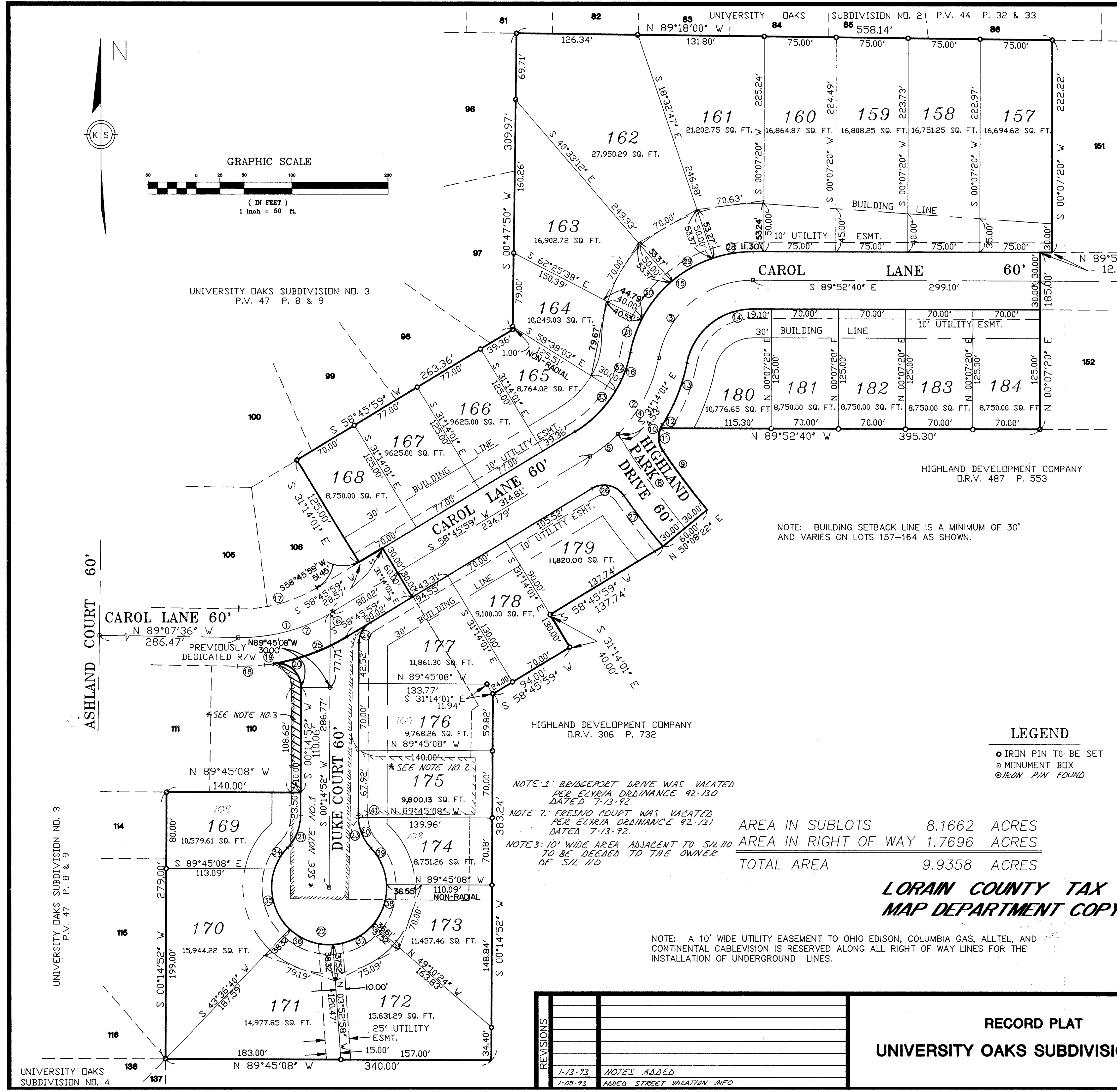


GRAPHIC SCALE
(IN FEET)
1 inch = 50 ft.

UNIVERSITY OAKS SUBDIVISION NO. 3
P.V. 47 P. 8 & 9

UNIVERSITY OAKS SUBDIVISION NO. 5

CHESTNUT RIDGE
HEIGHTS SUBDIVISION NO. 5
P.V. 38 P. 7-9



HIGHLAND DEVELOPMENT COMPANY
D.R.V. 487 P. 553

HIGHLAND DEVELOPMENT COMPANY
D.R.V. 306 P. 732

NOTE: BUILDING SETBACK LINE IS A MINIMUM OF 30'
AND VARIES ON LOTS 157-164 AS SHOWN.

NOTE 1: BRIDGEPORT DRIVE WAS VACATED
PER ELYRIA ORDINANCE 92-130
DATED 7-13-92.
NOTE 2: FRESNO COURT WAS VACATED
PER ELYRIA ORDINANCE 92-131
DATED 7-13-92.
NOTE 3: 10' WIDE AREA ADJACENT TO S/L 110
TO BE DEED TO THE OWNER
OF S/L 110

AREA IN SUBLOTS 8.1662 ACRES
AREA IN RIGHT OF WAY 1.7696 ACRES
TOTAL AREA 9.9358 ACRES

NOTE: A 10' WIDE UTILITY EASEMENT TO OHIO EDISON, COLUMBIA GAS, ALLTEL, AND
CONTINENTAL CABLEVISION IS RESERVED ALONG ALL RIGHT OF WAY LINES FOR THE
INSTALLATION OF UNDERGROUND LINES.

CURVE TABLE

LOT	CURVE	RADIUS	LENGTH	TANGENT	CHORD	BEARING	DELTA
CL	1	183.14'	102.63'	52.70'	101.29'	N 74°49'11" E	32°06'25"
CL	2	155.00'	129.36'	68.72'	125.64'	N 34°51'27" E	47°49'03"
CL	3	100.00'	138.18'	82.69'	127.45'	S 50°32'08" W	79°10'24"
CL	4	155.00'	91.78'	47.28'	90.45'	N 27°54'45" E	33°55'38"
CL	5	155.00'	37.58'	18.88'	37.49'	N 51°49'16" E	13°53'25"
CL	6	183.14'	2.02'	1.01'	2.02'	N 59°04'56" E	00°37'55"
CL	7	183.14'	100.61'	51.61'	99.35'	N 75°08'09" E	31°28'30"
CL	8	770.00'	115.94'	58.08'	115.83'	S 35°32'49" E	08°37'37"
R/W	9	740.00'	76.95'	38.51'	76.92'	S 36°52'53" E	05°57'29"
R/W	10	25.00'	28.97'	16.36'	27.37'	S 00°42'32" E	66°23'13"
R/W	11	25.00'	24.60'	13.40'	23.62'	S 05°42'46" E	56°22'46"
R/W	12	25.00'	4.37'	2.19'	4.36'	S 27°28'51" W	10°00'27"
R/W	13	185.00'	69.54'	35.18'	69.13'	N 21°43'00" E	21°32'09"
R/W	14	70.00'	96.73'	57.88'	89.21'	S 50°32'08" W	79°10'24"
R/W	15	130.00'	179.64'	107.49'	165.68'	S 50°32'08" W	79°10'24"
R/W	16	125.00'	104.32'	55.42'	101.32'	N 34°51'27" E	47°49'03"
R/W	17	153.14'	85.82'	44.07'	84.70'	N 74°49'11" E	32°06'25"
R/W	18	213.14'	28.26'	14.15'	28.24'	N 87°04'28" E	07°35'52"
R/W	19	213.14'	9.05'	4.52'	9.05'	N 82°03'35" E	02°25'54"
R/W	20	25.00'	43.37'	29.48'	38.13'	N 49°27'15" W	99°24'14"
R/W	21	50.00'	37.82'	19.87'	36.93'	N 21°55'07" E	43°20'30"
R/W	22	60.00'	279.27'	63.58'	87.27'	S 89°45'08" E	266°41'01"
R/W	23	50.00'	37.82'	19.87'	36.93'	S 21°25'23" E	43°20'30"
R/W	24	25.00'	25.53'	14.01'	24.44'	S 29°30'25" W	58°31'07"
R/W	25	213.14'	82.13'	41.58'	81.62'	N 69°48'18" E	22°04'39"
R/W	26	25.00'	37.60'	23.39'	34.16'	N 78°08'42" W	86°10'39"
R/W	27	800.00'	67.08'	33.56'	67.06'	S 37°27'30" E	04°48'16"
161	28	130.00'	42.36'	21.37'	42.17'	S 80°47'16" W	18°40'07"
162	29	130.00'	49.93'	25.28'	49.63'	S 60°27'00" W	22°00'25"
163	30	130.00'	51.16'	25.92'	50.83'	S 38°10'21" W	22°32'54"
164	31	130.00'	36.19'	18.21'	36.07'	S 18°55'25" W	15°56'58"
164	32	125.00'	43.68'	22.07'	43.46'	N 20°57'36" E	20°01'20"
165	33	125.00'	60.64'	30.93'	60.05'	N 44°52'07" E	27°47'43"
169	34	60.00'	26.05'	13.24'	26.85'	S 31°08'58" W	24°52'49"
170	35	60.00'	68.17'	38.30'	64.56'	S 13°50'23" E	65°05'53"
171	36	60.00'	49.74'	26.40'	48.32'	S 70°08'09" E	47°29'38"
172	37	60.00'	47.43'	25.03'	46.20'	N 63°28'19" E	45°17'26"
173	38	60.00'	45.73'	24.04'	44.64'	N 18°59'24" E	43°40'24"
174	39	60.00'	42.15'	21.99'	41.29'	N 22°58'13" W	40°14'51"
174	40	50.00'	35.74'	18.67'	34.99'	S 22°36'54" E	40°57'29"
175	41	50.00'	2.08'	1.04'	2.08'	S 00°56'39" E	02°23'01"

LEGEND

- IRON PIN TO BE SET
- MONUMENT BOX
- IRON PIN FOUND

LORAIN COUNTY TAX
MAP DEPARTMENT COPY

UNIVERSITY OAKS
SUBDIVISION NO. 4

UNIVERSITY OAKS SUBDIVISION NO. 3
P.V. 47 P. 8 & 9

REVISIONS	DATE	DESCRIPTION
1-13-93	NOTES ADDED	
1-25-93	ADDED STREET VACATION INFO	

RECORD PLAT
UNIVERSITY OAKS SUBDIVISION NO. 6

KS ASSOCIATES, INC.

ENGINEERS/SURVEYORS
424 Middle Avenue
P.O. Box 69
Elyria, Ohio 44036
ELYRIA (216) 322-6317 * LORAIN (216) 244-5757



SHEET
2 OF
2
JOB NO.
81007-6