

OUT OF 04-00-024-102-098 0.95 A.
 " " " " " 099 0.46 A.
 " " " " " 100 0.82 A.
 " " " " " 101 29.27 A.
 INTO PLAT 31.50 A.
 REMAINDER 04-00-024-102-136 11.59 A.
 ACREAGE CORR. PER SURVEY 11.60 A.
 BY: KS ASSOCIATES 1:292,783

CURVE SCHEDULE

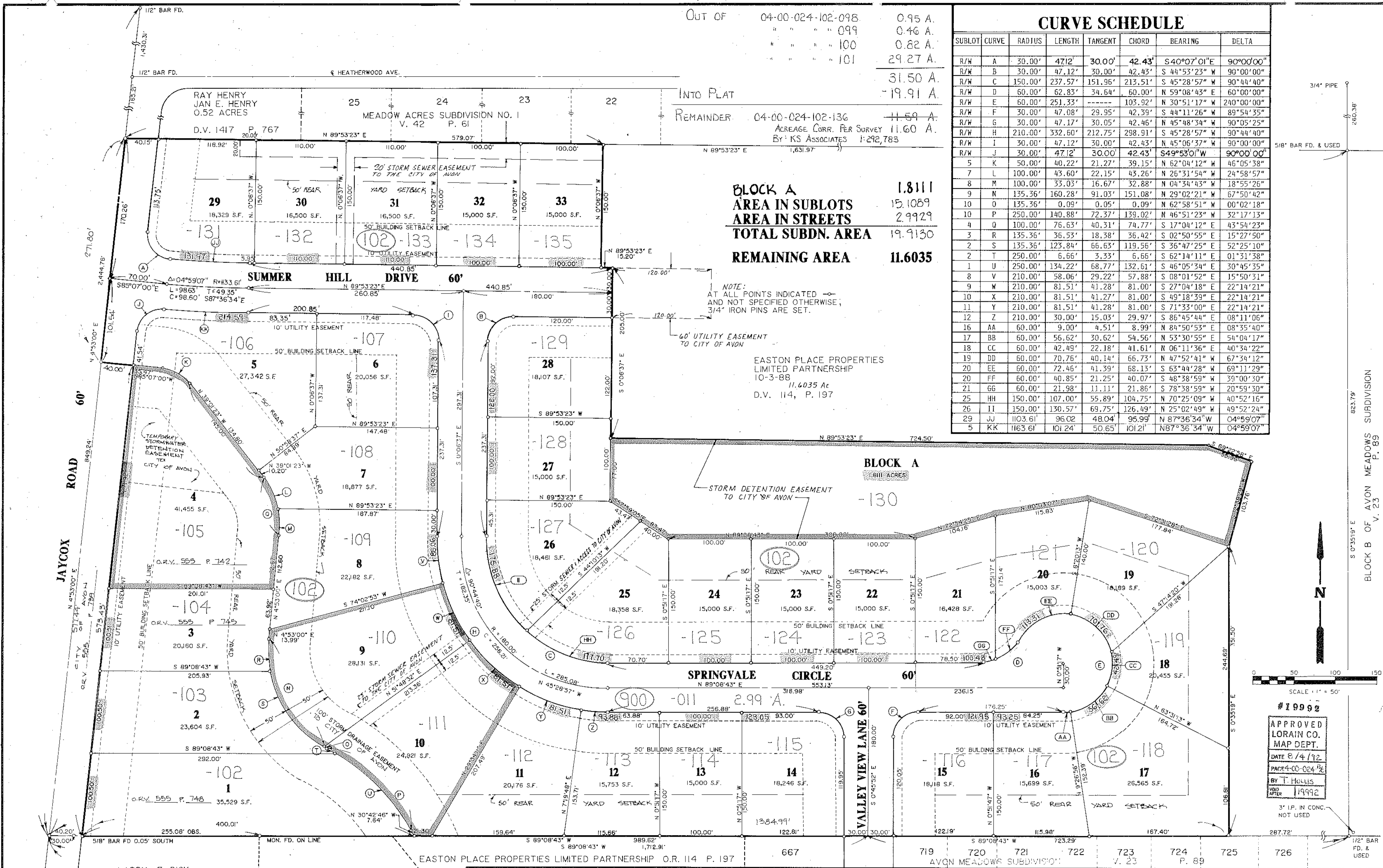
SUBLOT	CURVE	RADIUS	LENGTH	TANGENT	CHORD	BEARING	DELTA
R/W A	A	30.00'	47.12'	30.00'	42.43'	S40°07'01"E	90°00'00"
R/W B	B	30.00'	47.12'	30.00'	42.43'	S 45°53'23" W	90°00'00"
R/W C	C	150.00'	237.57'	151.96'	213.51'	S 45°28'57" W	90°44'40"
R/W D	D	60.00'	62.83'	34.64'	60.00'	N 59°08'43" E	60°00'00"
R/W E	E	60.00'	251.33'	-----	103.92'	N 30°51'17" W	240°00'00"
R/W F	F	30.00'	47.08'	29.95'	42.39'	S 44°11'26" W	89°54'35"
R/W G	G	30.00'	47.17'	30.05'	42.46'	N 45°48'34" W	90°05'25"
R/W H	H	210.00'	332.60'	212.75'	298.91'	S 45°28'57" W	90°44'40"
R/W I	I	30.00'	47.12'	30.00'	42.43'	N 45°06'37" W	90°00'00"
R/W J	J	30.00'	47.12'	30.00'	42.43'	S49°53'01"W	90°00'00"
5 K	K	50.00'	40.22'	21.27'	39.15'	N 62°04'12" W	46°05'38"
7 L	L	100.00'	43.60'	22.15'	43.26'	N 26°31'54" W	24°58'57"
8 M	M	100.00'	33.03'	16.67'	32.88'	N 04°34'43" W	18°55'25"
9 N	N	135.36'	160.28'	91.03'	151.08'	N 29°02'21" W	67°50'42"
10 O	O	135.36'	0.09'	0.05'	0.09'	N 62°58'51" W	00°02'18"
10 P	P	250.00'	140.88'	72.37'	139.02'	N 46°51'23" W	32°17'13"
4 Q	Q	100.00'	76.63'	40.31'	74.77'	S 17°04'12" E	43°54'23"
3 R	R	135.36'	36.53'	18.38'	36.42'	S 02°50'55" E	15°27'50"
2 S	S	135.36'	123.84'	66.63'	119.56'	S 36°47'25" E	52°25'10"
2 T	T	250.00'	6.66'	3.33'	6.66'	S 62°14'11" E	01°31'38"
1 U	U	250.00'	134.22'	68.77'	132.61'	S 46°05'34" E	30°45'35"
8 V	V	210.00'	58.06'	29.22'	57.88'	S 08°01'52" E	15°50'31"
9 W	W	210.00'	81.51'	41.28'	81.00'	S 27°04'18" E	22°14'21"
10 X	X	210.00'	81.51'	41.27'	81.00'	S 49°18'39" E	22°14'21"
11 Y	Y	210.00'	81.51'	41.28'	81.00'	S 71°33'00" E	22°14'21"
12 Z	Z	210.00'	30.00'	15.03'	29.97'	S 86°45'44" E	08°11'06"
16 AA	AA	60.00'	9.00'	4.51'	8.99'	N 84°50'53" E	08°35'40"
17 BB	BB	60.00'	56.62'	30.62'	54.56'	N 53°30'55" E	54°04'17"
18 CC	CC	60.00'	42.49'	22.18'	41.61'	N 06°11'36" E	40°34'22"
19 DD	DD	60.00'	70.76'	40.14'	66.73'	N 47°52'41" W	67°34'12"
20 EE	EE	60.00'	72.46'	41.39'	68.13'	S 63°44'28" W	69°11'29"
20 FF	FF	60.00'	40.85'	21.25'	40.07'	S 48°38'59" W	39°00'30"
21 GG	GG	60.00'	21.98'	11.11'	21.86'	S 78°38'59" W	20°59'30"
25 HH	HH	150.00'	107.00'	55.89'	104.75'	N 70°25'09" W	40°52'16"
26 II	II	150.00'	130.57'	69.75'	126.49'	N 25°02'49" W	49°52'24"
29 JJ	JJ	1103.61'	96.02'	48.04'	95.99'	N 87°36'34" W	04°59'07"
5 KK	KK	1163.61'	101.24'	50.65'	101.21'	N87°36'34"W	04°59'07"

BLOCK A 1.8111
AREA IN SUBLOTS 15.1089
AREA IN STREETS 2.9929
TOTAL SUBDN. AREA 19.9130
REMAINING AREA 11.6035

NOTE:
 AT ALL POINTS INDICATED AND NOT SPECIFIED OTHERWISE, 3/4" IRON PINS ARE SET.

EASTON PLACE PROPERTIES LIMITED PARTNERSHIP
 10-3-88
 11.6035 Ac
 D.V. 114, P. 197

BLOCK A
 .8111 ACRES



190943

41/53

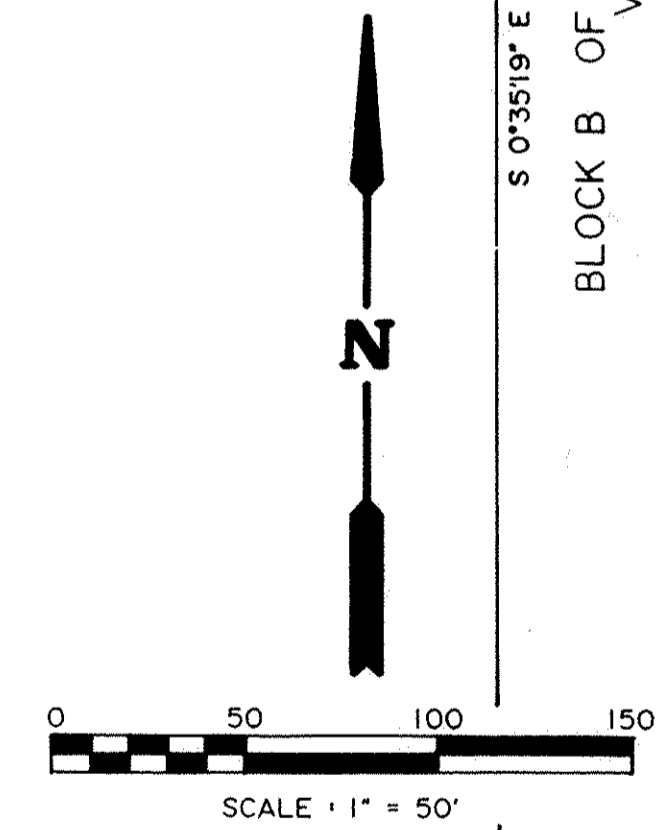
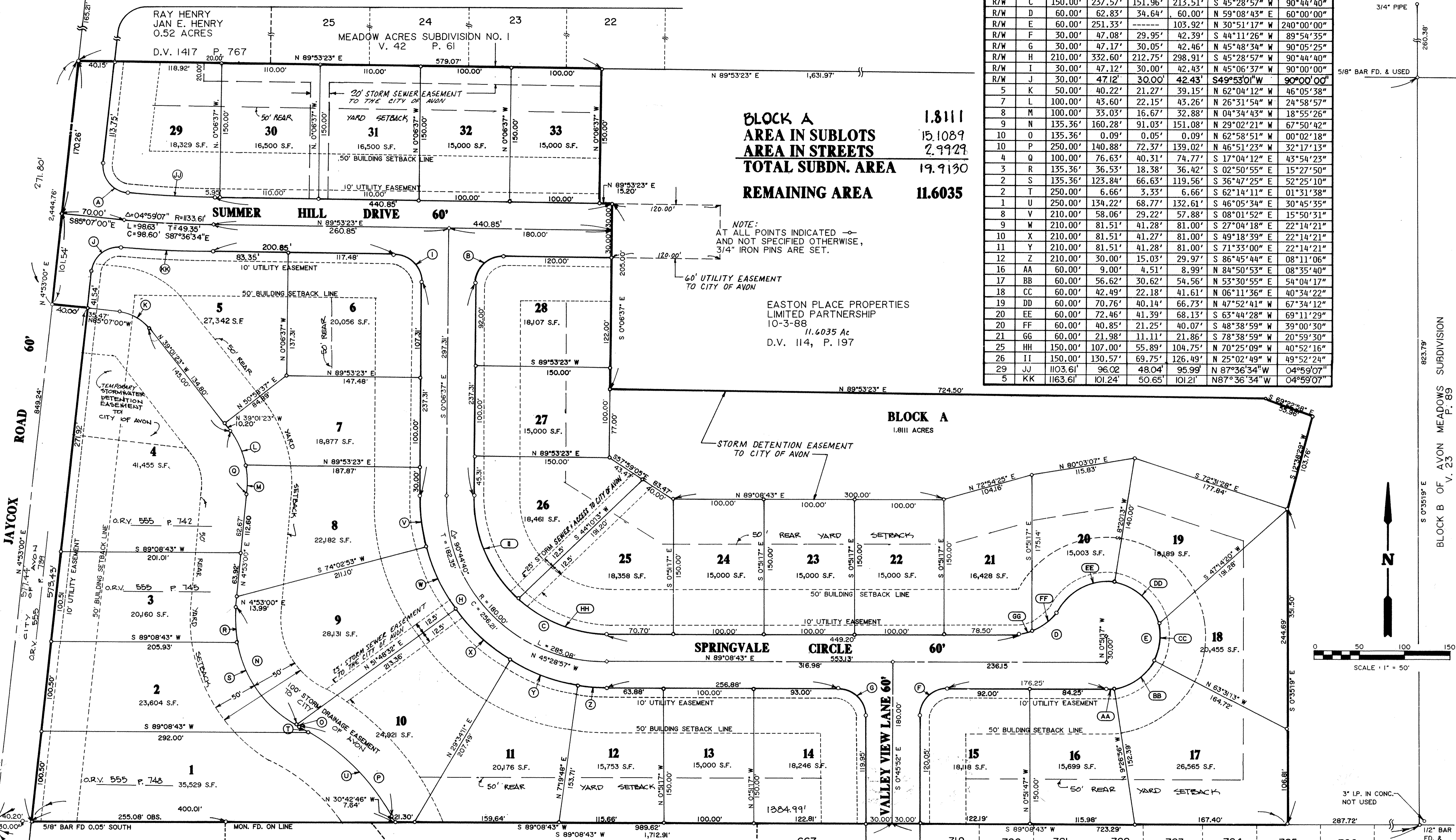
CURVE SCHEDULE

SUBLOT	CURVE	RADIUS	LENGTH	TANGENT	CHORD	BEARING	DELTA
R/W A	A	30.00'	47.12'	30.00'	42.43'	S40°07'01"E	90°00'00"
R/W B	B	30.00'	47.12'	30.00'	42.43'	S44°53'23"W	90°00'00"
R/W C	C	150.00'	237.57'	151.96'	213.51'	S45°28'57"W	90°44'40"
R/W D	D	60.00'	62.83'	34.64'	60.00'	N59°08'43"E	60°00'00"
R/W E	E	60.00'	251.33'	-----	103.92'	N30°51'17"W	240°00'00"
R/W F	F	30.00'	47.08'	29.95'	42.39'	S44°11'26"W	89°54'35"
R/W G	G	30.00'	47.17'	30.05'	42.46'	N45°48'34"W	90°05'25"
R/W H	H	210.00'	332.60'	212.75'	298.91'	S45°28'57"W	90°44'40"
R/W I	I	30.00'	47.12'	30.00'	42.43'	N45°06'37"W	90°00'00"
R/W J	J	30.00'	47.12'	30.00'	42.43'	S49°53'01"W	90°00'00"
5 K	K	50.00'	40.22'	21.27'	39.15'	N62°04'12"E	46°05'38"
7 L	L	100.00'	43.60'	22.15'	43.26'	N26°31'54"W	24°58'57"
8 M	M	100.00'	33.03'	16.67'	32.88'	N04°34'43"W	18°55'26"
9 N	N	135.36'	160.28'	91.03'	151.08'	N29°02'21"W	67°50'42"
10 O	O	135.36'	0.09'	0.05'	0.09'	N62°58'51"W	00°02'18"
10 P	P	250.00'	140.88'	72.37'	139.02'	N46°51'23"W	32°17'13"
4 Q	Q	100.00'	76.63'	40.31'	74.77'	S17°04'12"E	43°54'23"
3 R	R	135.36'	36.53'	18.38'	36.42'	S02°50'55"E	15°27'50"
2 S	S	135.36'	123.84'	66.63'	119.56'	S36°47'25"W	52°25'10"
2 T	T	250.00'	6.66'	3.33'	6.66'	S62°14'11"E	01°31'38"
1 U	U	250.00'	134.22'	68.77'	132.61'	S46°05'34"E	30°45'35"
8 V	V	210.00'	58.06'	29.22'	57.88'	S08°01'52"W	15°50'31"
9 W	W	210.00'	81.51'	41.28'	81.00'	S27°04'18"E	22°14'21"
10 X	X	210.00'	81.51'	41.27'	81.00'	S49°18'39"E	22°14'21"
11 Y	Y	210.00'	81.51'	41.28'	81.00'	S71°33'00"E	22°14'21"
12 Z	Z	210.00'	30.00'	15.03'	29.97'	S86°45'44"E	08°11'06"
16 AA	AA	60.00'	9.00'	4.51'	8.99'	N84°50'53"E	08°35'40"
17 BB	BB	60.00'	56.62'	30.62'	54.56'	N53°30'55"E	54°04'17"
18 CC	CC	60.00'	42.49'	22.18'	41.61'	N06°11'36"E	40°34'22"
19 DD	DD	60.00'	70.76'	40.14'	66.73'	N47°52'41"W	67°34'12"
20 EE	EE	60.00'	72.46'	41.39'	68.13'	S63°44'28"W	69°11'29"
20 FF	FF	60.00'	40.85'	21.25'	40.07'	S48°38'59"W	39°00'30"
21 GG	GG	60.00'	21.98'	11.11'	21.86'	S78°38'59"W	20°59'30"
25 HH	HH	150.00'	107.00'	55.89'	104.75'	N70°25'09"W	40°52'16"
26 II	II	150.00'	130.57'	69.75'	126.49'	N25°02'49"W	49°52'24"
29 JJ	JJ	1103.61'	96.02'	48.04'	95.99'	N87°36'34"W	04°59'07"
5 KK	KK	1163.61'	101.24'	50.65'	101.21'	N87°36'34"W	04°59'07"

BLOCK A 1.8111
AREA IN SUBLOTS 15.1089
AREA IN STREETS 2.9929
TOTAL SUBDN. AREA 19.9130
REMAINING AREA 11.6035

NOTE:
 AT ALL POINTS INDICATED
 AND NOT SPECIFIED OTHERWISE,
 3/4" IRON PINS ARE SET.

EASTON PLACE PROPERTIES
 LIMITED PARTNERSHIP
 10-3-88
 11.6035 Ac
 D.V. 114, P. 197



LARRY F. DICK
 JUDITH L. DICK
 0.88 ACRES
 D.V. 1128 P.825

EASTON PLACE PROPERTIES
 LIMITED PARTNERSHIP
 O.R. 114, P. 197

**LORAIN COUNTY TAX
 MAP DEPARTMENT COPY**

REVISIONS	
7-20-92	PER COUNTY
4-24-92	REV'D 2/1 29,30,31 PER PC. REQUEST

SUMMER HILL SUBDIVISION NO. 1
PART OF ORIGINAL AVON TOWNSHIP
SECTION NO. 24, NOW IN THE CITY OF AVON,
LORAIN COUNTY, STATE OF OHIO

KS ASSOCIATES, INC.
 ENGINEERS/SURVEYORS
 424 Middle Avenue
 P.O. Box 89
 Elyria, Ohio 44036
 Elyria (216) 322-6317 • Lorain (216) 244-5757



SHEET
2 OF
2
 JOB NO.
91-067-1

49/53