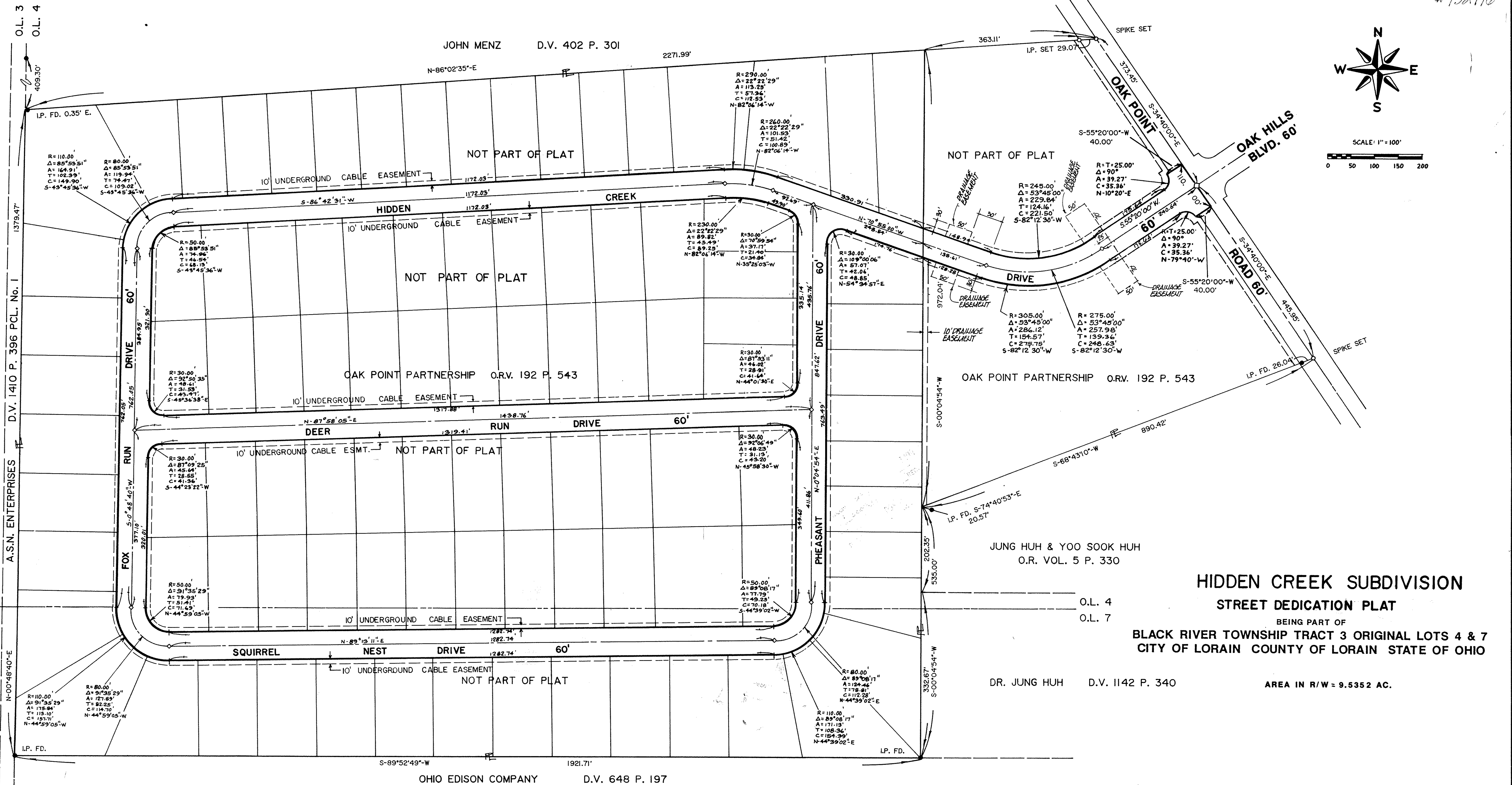


SCALE: 1" = 100'
0 50 100 150 200

O.L. 3
O.L. 4
O.L. 3
O.L. 8
O.L. 7



HIDDEN CREEK SUBDIVISION
STREET DEDICATION PLAT
BEING PART OF
BLACK RIVER TOWNSHIP TRACT 3 ORIGINAL LOTS 4 & 7
CITY OF LORAIN COUNTY OF LORAIN STATE OF OHIO

AREA IN R/W = 9.5352 AC.

AREA IN ORIGINAL LOT 4 7.4220 AC.
AREA IN ORIGINAL LOT 7 2.1132 AC.
TOTAL AREA IN R/W 9.5352 AC.

LORAIN COUNTY TAX
MAP DEPARTMENT COPY

REVISIONS	4-29-90	MISCELLANEOUS REVISIONS
	8-16-91	DRAINAGE EASEMENTS

RIGHT-OF-WAY DEDICATION
RECORD PLAT

KS ASSOCIATES, INC.
ENGINEERS/SURVEYORS
424 Middle Avenue
P.O. Box 89
Elyria, Ohio 44036
Elyria (216) 322-6317 • Lorain (216) 244-5757



SHEET	OF
2	2
JOB NO.	89-252