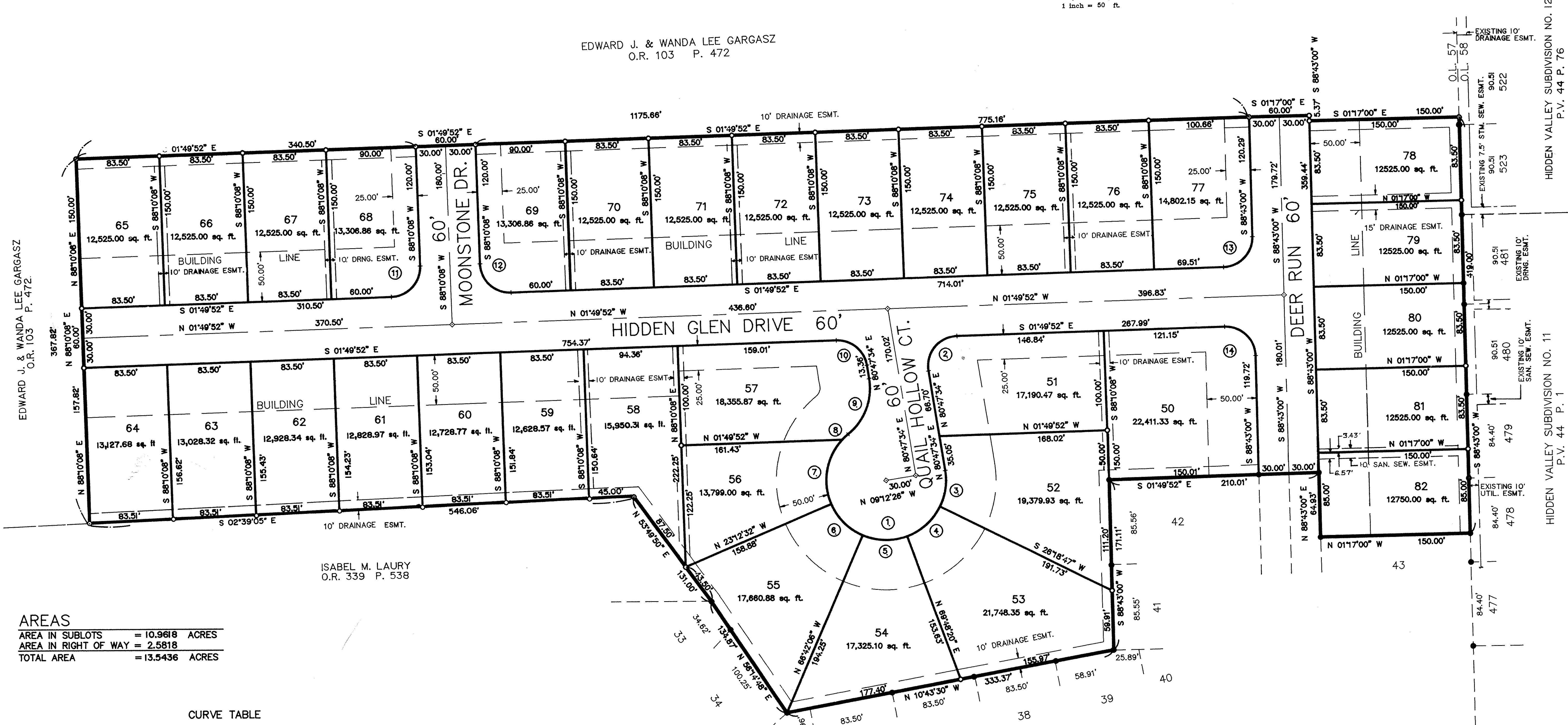


EDWARD J. & WANDA LEE GARGASZ
O.R. 103 P. 472



EDWARD J. & WANDA LEE GARGASZ
O.R. 103 P. 472

ISABEL M. LAURY
O.R. 339 P. 538

HIDDEN VALLEY SUBDIVISION NO. 12
P.V. 44 P. 76

HIDDEN VALLEY SUBDIVISION NO. 11
P.V. 44 P. 1

AREAS

AREA IN SUBLOTS	= 10.9618 ACRES
AREA IN RIGHT OF WAY	= 2.5818
TOTAL AREA	= 13.5436 ACRES

CURVE TABLE

CURVE	LOT	RADIUS	LENGTH	TANGENT	CHORD	BEARING	DELTA
1	51	60.00'	251.33'	103.92'	103.92'	N 20°47'34" E	240°00'00"
2	51	30.00'	50.99'	34.13'	45.07'	S 50°31'09" E	97°22'34"
3	52	60.00'	37.20'	19.22'	36.60'	N 81°26'49" W	35°31'12"
4	53	60.00'	45.55'	23.93'	44.46'	N 41°56'26" W	43°29'34"
5	54	60.00'	45.55'	23.93'	44.46'	N 01°33'07" E	43°29'34"
6	55	60.00'	45.55'	23.93'	44.46'	N 45°02'41" E	43°29'34"
7	56	60.00'	69.56'	39.28'	65.73'	S 79°59'47" E	66°25'30"
8	57	60.00'	7.93'	3.97'	7.93'	S 42°59'44" E	07°34'36"
9	57	60.00'	62.83'	34.64'	60.00'	N 69°12'26" W	60°00'00"
10	57	30.00'	43.26'	26.37'	39.61'	S 39°28'51" W	82°37'26"
11	68	30.00'	47.12'	30.00'	42.43'	N 46°49'52" W	90°00'00"
12	69	30.00'	47.12'	30.00'	42.43'	N 43°10'08" E	90°00'00"
13	77	30.00'	46.84'	29.71'	42.22'	N 46°33'26" W	89°27'08"
14	50	30.00'	47.41'	30.29'	42.63'	S 43°26'34" W	90°32'52"

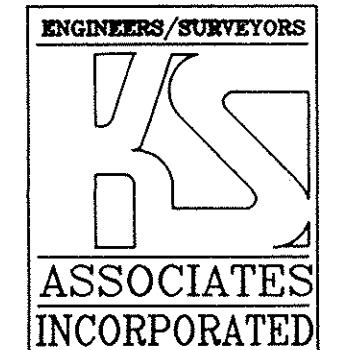
HILLSIDE SUBDIVISION NO. 3
P.V. 44 P. 58

LORAIN COUNTY TAX
MAP DEPARTMENT COPY

10-18-90	PER LORAIN COUNTY ENGINEER	CMD

PLAT OF
HILLSIDE SUBDIVISION NO. 4
PART OF AMHERST TOWNSHIP ORIGINAL LOT NO. 57
AMHERST TOWNSHIP - COUNTY OF LORAIN - STATE OF OHIO
AUGUST 1990

KS ASSOCIATES, INC.
ENGINEERS/SURVEYORS
424 Middle Avenue
P.O. Box 89
Elyria, Ohio 44036
ELYRIA (216) 322-6317 * LORAIN (216) 244-5757



ENGINEERS/SURVEYORS
SHEET 2 OF 2
JOB NO.
86-296-4