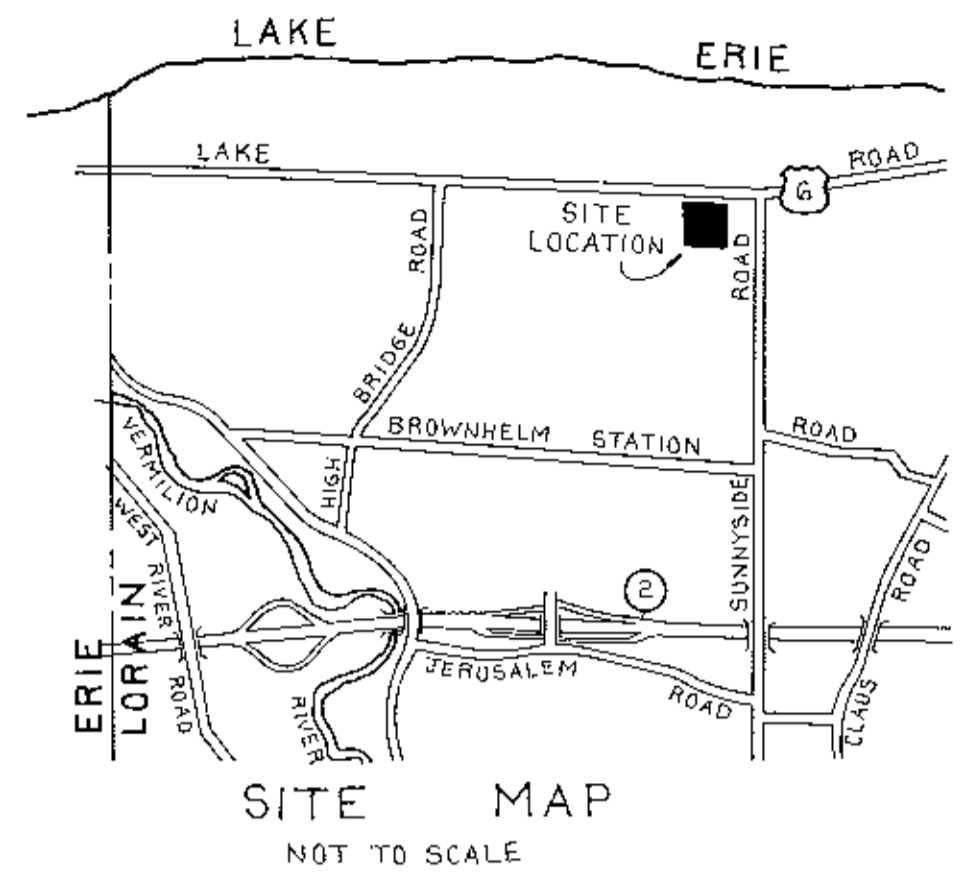


THE WOODLANDS OF VERMILION CONDOMINIUM NO. 1

CITY OF VERMILION - COUNTY OF LORAIN - OHIO

PART OF ORIGINAL BROWHELM TOWNSHIP LOTS NO. 2

PHASE 3

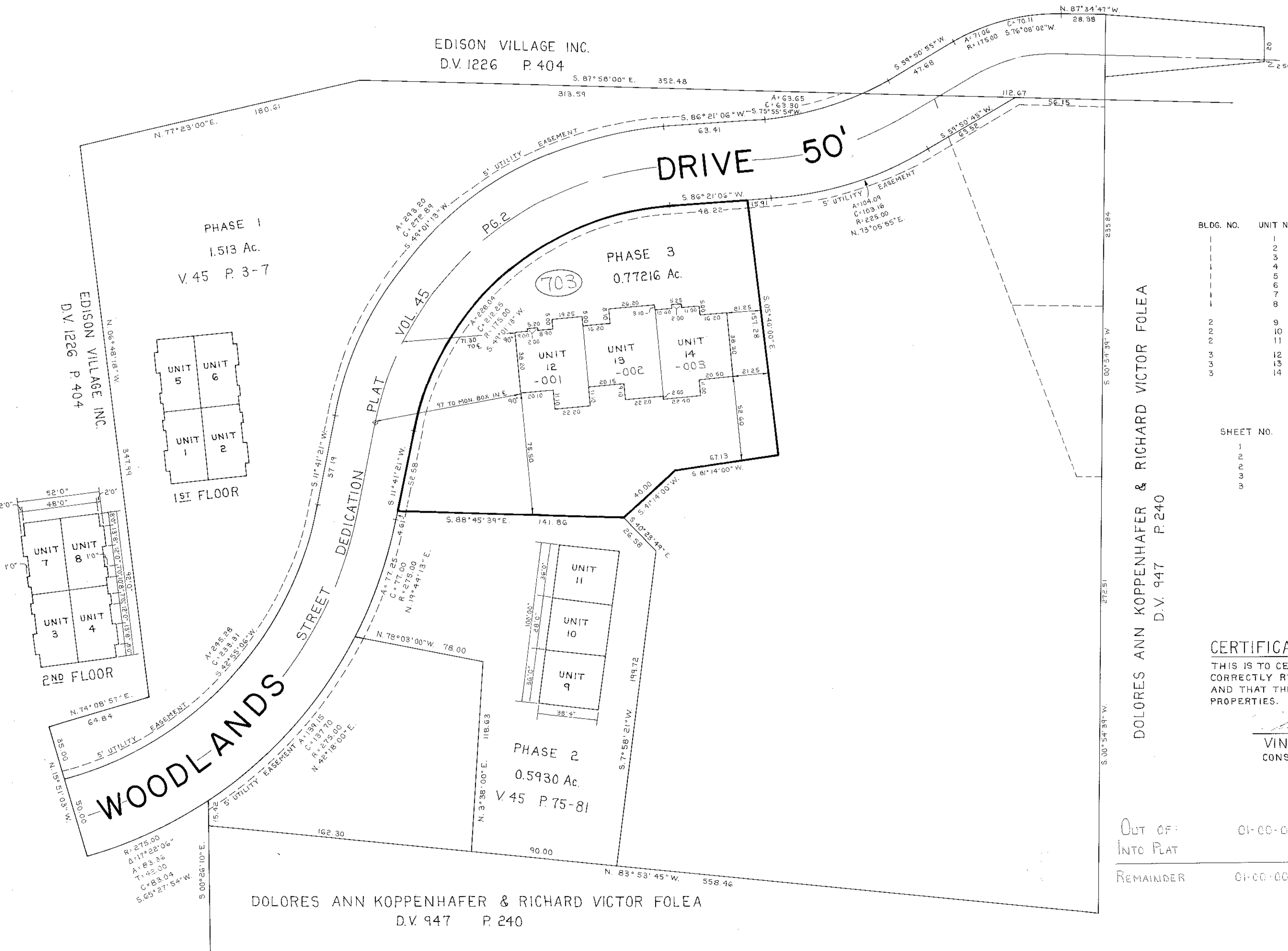


EDISON VILLAGE INC.
D.V. 1226 P. 404

PHASE 1
1.513 Ac.
V. 45 P. 3-7

PHASE 3
0.77216 Ac.

PHASE 2
0.5930 Ac.
V. 45 P. 75-81



BLDG. NO.	UNIT NO.	UNIT AREA	% OWNERSHIP
1	1	1,088 S.F.	.0584
1	2	1,088 S.F.	.0584
1	3	1,138 S.F.	.0611
1	4	1,138 S.F.	.0611
1	5	1,088 S.F.	.0584
1	6	1,088 S.F.	.0584
1	7	1,138 S.F.	.0611
1	8	1,138 S.F.	.0611
2	9	1,668 S.F.	.0897
2	10	1,904 S.F.	.1022
2	11	1,668 S.F.	.0897
3	12	1,476 S.F.	.0793
3	13	1,516 S.F.	.0814
3	14	1,484 S.F.	.0797

SHEET NO.	DESCRIPTION
1	TITLE SHEET - SURVEY MAP & MISC.
2	WEST - SOUTH - NORTH ELEVATION UNITS
3	EAST ELEVATION UNITS
4	FOUNDATION UNITS
5	FIRST FLOOR PLAN UNITS

LORAIN COUNTY AUDITOR

LORAIN COUNTY RECORDER

DOLORES ANN KOPPENHAFFER & RICHARD VICTOR FOLEA
D.V. 947 P. 240

CERTIFICATION

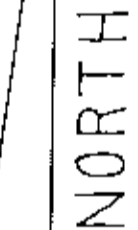
THIS IS TO CERTIFY THAT THE ATTACHED DRAWINGS CORRECTLY REPRESENT THE BUILDING AS CONSTRUCTED AND THAT THERE ARE NO ENCROACHMENTS ON ADJUTING PROPERTIES.

Vincent C. McGervey 4-29-91
VINCENT C. MCGERVEY
CONSULTING ENGINEER & SURVEYOR # 4289



OUT OF INTO PLAT	01-00-002-115-017	30.82 A. 0.77 A.
REMAINDER	01-00-002-115-018	30.05 A.

DOLORES ANN KOPPENHAFFER & RICHARD VICTOR FOLEA
D.V. 947 P. 240



#19355

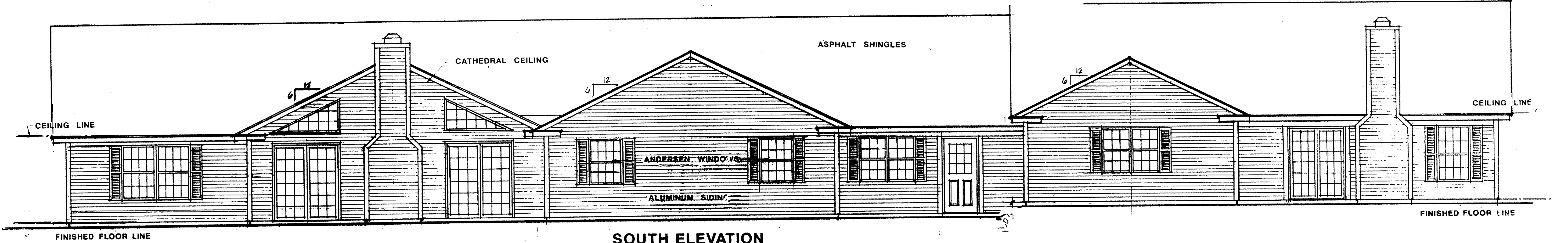
APPROVED
LORAIN CO.
MAP DEPT.
DATE 5/1/91
PAGE 1-00-002-C
BY T. HOLLIS
VOID AFTER 11/355

133426

133426 47/34

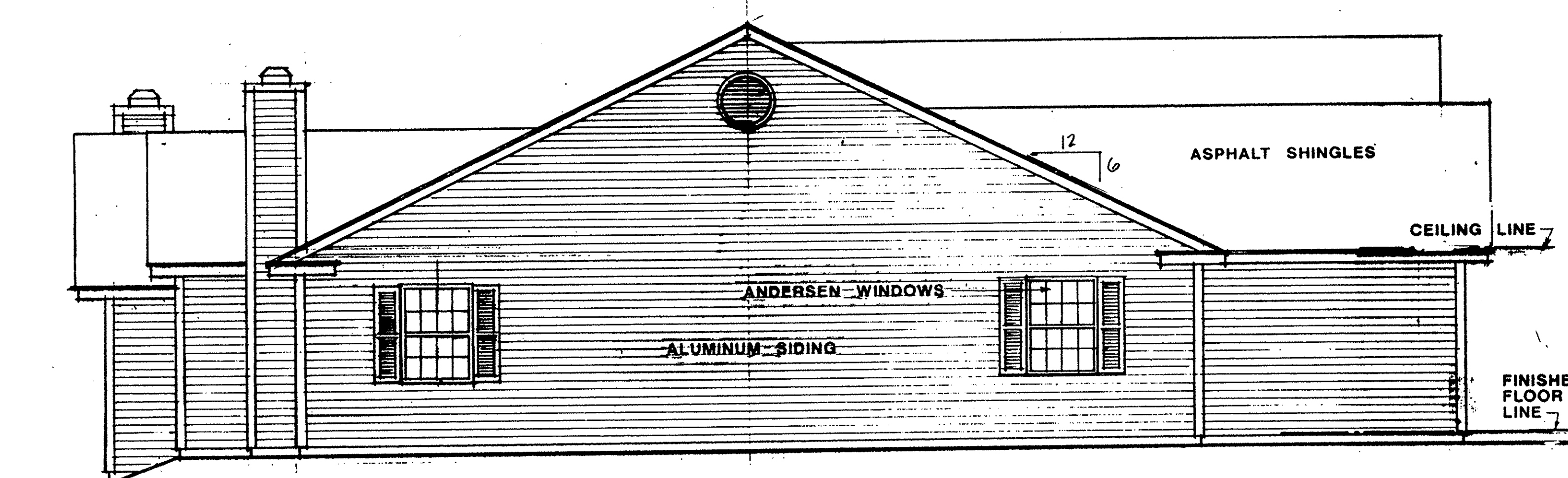
THE WOODLANDS CONDOMINIUMS

VERMILION, OHIO



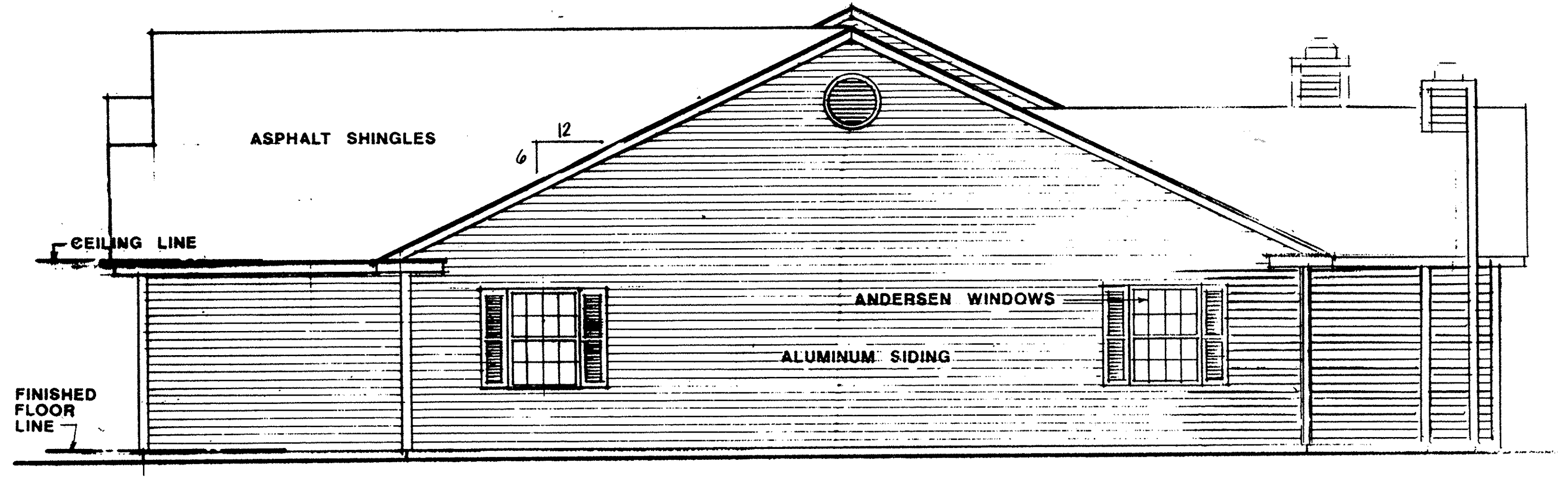
SOUTH ELEVATION

SCALE: 1/4"=1'-0"



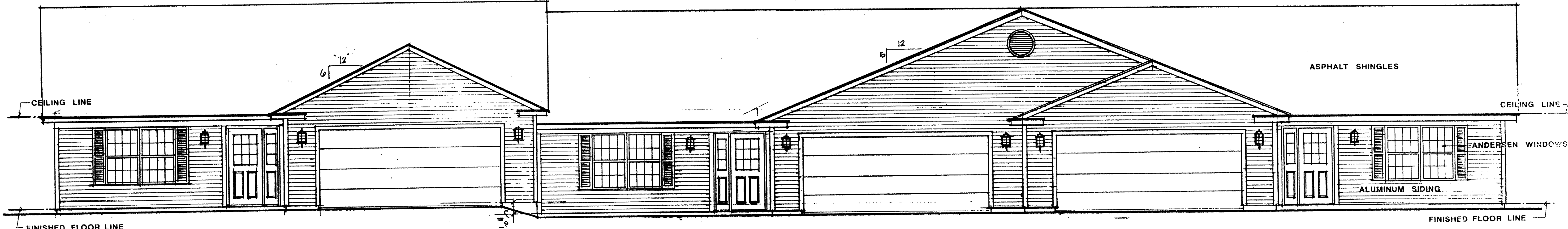
EAST ELEVATION

SCALE: 1/4"=1'-0"



WEST ELEVATION

SCALE: 1/4"=1'-0"

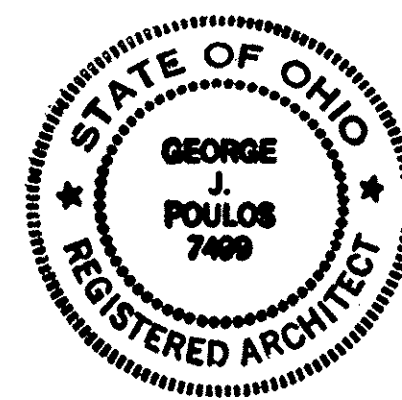


NORTH ELEVATION

SCALE: 1/4"=1'-0"

CASELL ENTERPRISES, INC.
VERMILION, OHIO

LORAIN COUNTY TAX
MAP DEPARTMENT COPY



I CERTIFY THAT WITH THE EXCEPTION OF MINOR ARCHITECTURAL MODIFICATIONS MADE DURING CONSTRUCTION, THE DRAWINGS REPRESENT THE STRUCTURES AS BUILT.

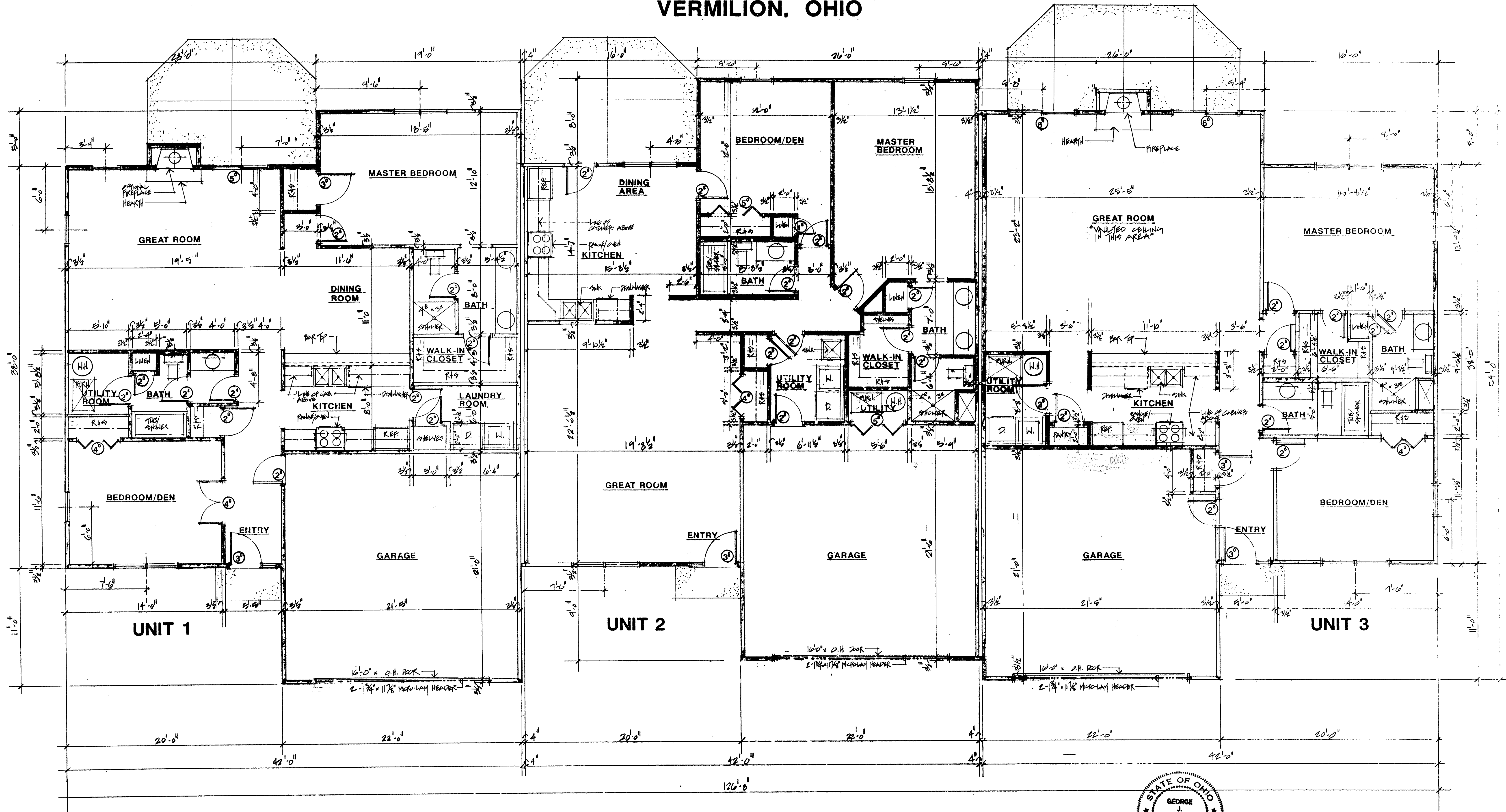
George J. Poulos
George J. Poulos, Architect #7499

4/19/91
Date

Rjm architects incorporated
158 E. Market St. Suite 703 Sandusky, OH 44870 (419) 625-0009

THE WOODLANDS CONDOMINIUMS

VERMILION, OHIO



CASSELL ENTERPRISES, INC.
VERMILION, OHIO

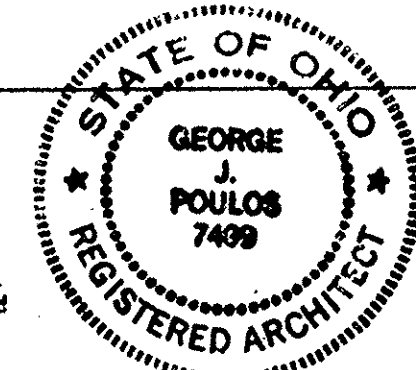
FLOOR PLAN
SCALE: 1/4" = 1'-0"

LORAIN COUNTY TAX
MAP DEPARTMENT COPY

I CERTIFY THAT WITH THE EXCEPTION OF MINOR ARCHITECTURAL MODIFICATIONS MADE DURING CONSTRUCTION, THE DRAWINGS REPRESENT THE STRUCTURES AS BUILT.

George J. Poulos
George J. Poulos, Architect #7499

4/19/91
Date



gjm architects incorporated
158 E. Market St. Suite 703 Sandusky, OH 44870 (419) 625-0009