

GRAPHIC SCALE
 (IN FEET)
 1 inch = 60 ft.
 APRIL 1990

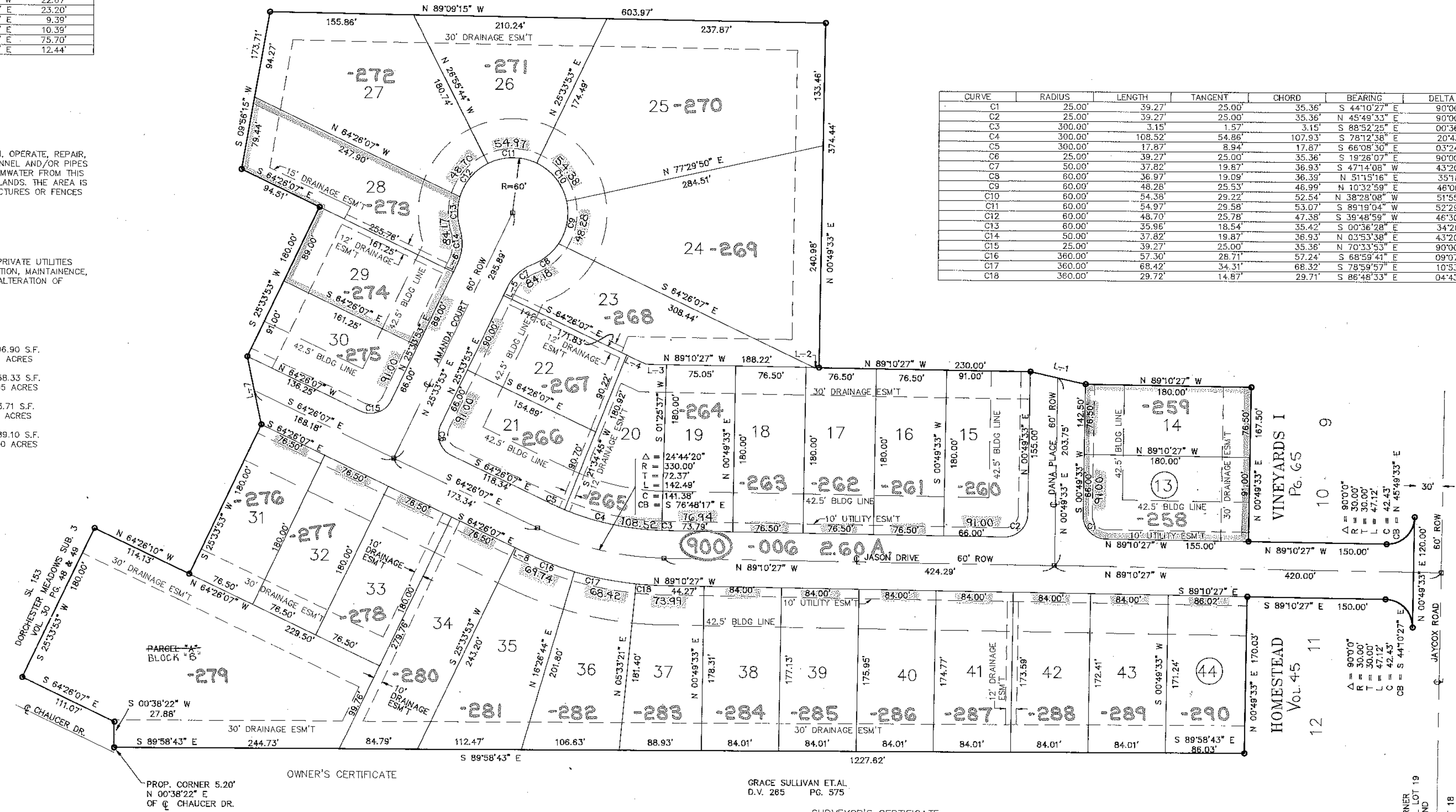
LINE	DIRECTION	DISTANCE
L-1	N 77°24'21" W	61.29'
L-2	N 89°10'27" W	5.41'
L-3	N 89°10'27" W	22.67'
L-4	S 64°26'07" E	23.20'
L-5	N 25°33'53" E	9.39'
L-6	N 25°33'53" E	10.39'
L-7	S 12°00'05" E	75.70'
L-8	S 64°26'07" E	12.44'

DRAINAGE ESM'T:
 TO CONSTRUCT, MAINTAIN, OPERATE, REPAIR,
 OR ALTER AN OPEN CHANNEL AND/OR PIPES
 TO DRAIN & STORE STORMWATER FROM THIS
 PROPERTY & ADJOINING LANDS. THE AREA IS
 NOT TO HAVE ANY STRUCTURES OR FENCES
 BUILT IN OR ON IT.

UTILITY ESM'T:
 IS FOR PUBLIC AND/OR PRIVATE UTILITIES
 & IS FOR THE CONSTRUCTION, MAINTENANCE,
 OPERATION, REPAIR, OR ALTERATION OF
 THE UTILITIES.

AREAS:
 STREET: 113296.90 S.F.
 2.601 ACRES
 LOT: 562158.33 S.F.
 12.905 ACRES
 PARCEL "A": 55933.71 S.F.
 BLOCK "B": 1.284 ACRES
 TOTAL: 731389.10 S.F.
 16.790 ACRES

CURVE	RADIUS	LENGTH	TANGENT	CHORD	BEARING	DELTA
C1	25.00'	39.27'	25.00'	35.36'	S 44°10'27" E	90°00'00"
C2	25.00'	39.27'	25.00'	35.36'	N 45°49'33" E	90°00'00"
C3	300.00'	3.15'	1.57'	3.15'	S 88°52'25" E	00°36'04"
C4	300.00'	108.52'	54.86'	107.93'	S 78°12'38" E	20°43'31"
C5	300.00'	17.87'	8.94'	17.87'	S 66°08'30" E	03°24'45"
C6	25.00'	39.27'	25.00'	35.36'	S 19°26'07" E	90°00'00"
C7	50.00'	37.82'	19.87'	36.93'	S 47°14'08" W	43°20'30"
C8	60.00'	36.97'	19.09'	36.39'	N 51°51'16" E	35°18'15"
C9	60.00'	48.28'	25.53'	46.99'	N 10°32'59" E	48°06'18"
C10	60.00'	54.38'	29.22'	52.54'	N 38°28'08" W	51°55'57"
C11	60.00'	54.97'	29.58'	53.07'	S 89°19'04" W	52°29'37"
C12	60.00'	48.70'	25.78'	47.38'	S 39°48'59" W	46°30'34"
C13	60.00'	35.96'	18.54'	35.42'	S 00°36'28" E	34°20'19"
C14	50.00'	37.82'	19.87'	36.93'	N 03°53'36" E	43°20'30"
C15	25.00'	39.27'	25.00'	35.36'	N 70°33'53" E	90°00'00"
C16	360.00'	57.30'	28.71'	57.24'	S 68°59'43" E	09°07'09"
C17	360.00'	68.42'	34.31'	68.32'	S 78°59'57" E	10°53'23"
C18	360.00'	29.72'	14.87'	29.71'	S 86°48'33" E	04°43'48"

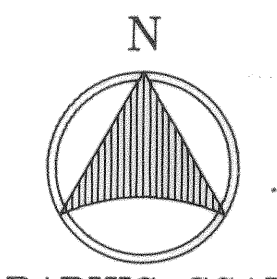


OUT OF: 07-00-019-000-213 6.17 A.
 " " " " -254 0.26 A.
 " " " " -257 25.58 A.
 TOTAL 32.01 A.
 INTO PLAT: -16.79 A.
 REMAINDER 07-00-019-000-291 15.22 A.

HOMESTEAD VINEYARDS II

#19137
 APPROVED
 LORAIN CO.
 MAP DEPT.
 DATE 10/4/90
 PAGE 7-00-019176
 BY T. HOLLIS
 VOID AFTER 19137

46/24-26



GRAPHIC SCALE



(IN FEET)
1 inch = 60 ft.
APRIL 1990

LINE	DIRECTION	DISTANCE
L-1	N 77°24'21" W	61.29'
L-2	N 89°10'27" W	5.41'
L-3	N 89°10'27" W	22.67'
L-4	S 64°26'07" E	23.20'
L-5	N 25°33'53" E	9.39'
L-6	N 25°33'53" E	10.39'
L-7	S 12°00'05" E	75.70'
L-8	S 64°26'07" E	12.44'

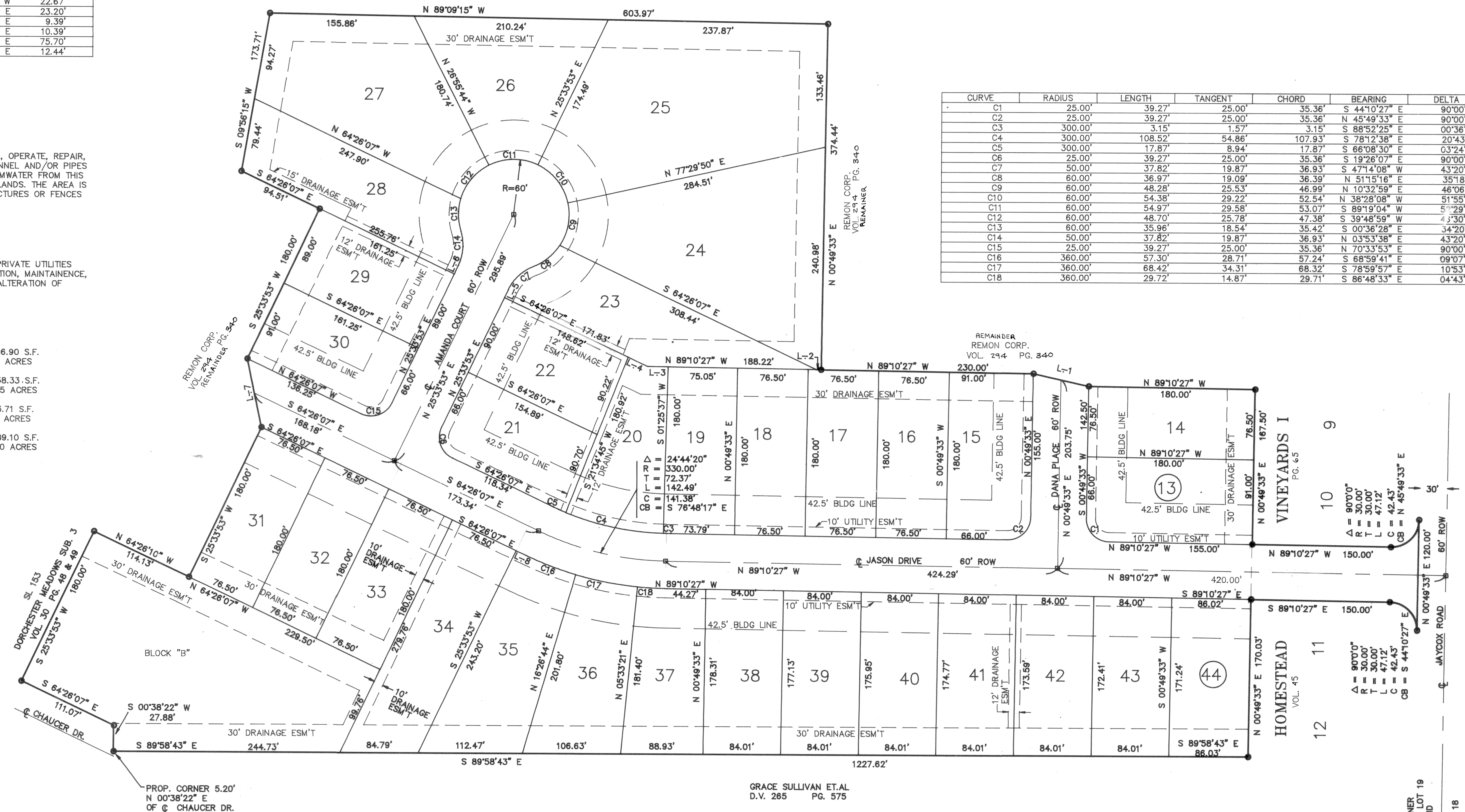
REMON CORP.
VOL. 294 PG. 340
REMAINDER

DRAINAGE ESM'T:
TO CONSTRUCT, MAINTAIN, OPERATE, REPAIR,
OR ALTER AN OPEN CHANNEL AND/OR PIPES
TO DRAIN & STORE STORMWATER FROM THIS
PROPERTY & ADJOINING LANDS. THE AREA IS
NOT TO HAVE ANY STRUCTURES OR FENCES
BUILT IN OR ON IT.

UTILITY ESM'T:
IS FOR PUBLIC AND/OR PRIVATE UTILITIES
& IS FOR THE CONSTRUCTION, MAINTENANCE,
OPERATION, REPAIR, OR ALTERATION OF
THE UTILITIES.

AREAS:
STREET: 113296.90 S.F.
2.601 ACRES
LOT: 562158.33 S.F.
12.905 ACRES
BLOCK "B": 55933.71 S.F.
1.284 ACRES
TOTAL: 731389.10 S.F.
16.790 ACRES

CURVE	RADIUS	LENGTH	TANGENT	CHORD	BEARING	DELTA
C1	25.00'	39.27'	25.00'	35.36'	S 44°10'27" E	90°00'00"
C2	25.00'	39.27'	25.00'	35.36'	N 45°49'33" E	90°00'00"
C3	300.00'	3.15'	1.57'	3.15'	S 88°52'25" E	00°36'04"
C4	300.00'	108.52'	54.86'	107.93'	S 78°12'38" E	20°43'31"
C5	300.00'	17.87'	8.94'	17.87'	S 66°08'30" E	03°24'45"
C6	25.00'	39.27'	25.00'	35.36'	S 19°26'07" E	90°00'00"
C7	50.00'	37.82'	19.87'	36.93'	S 47°14'08" W	43°20'30"
C8	60.00'	36.97'	19.09'	36.39'	N 51°15'16" E	35°18'15"
C9	60.00'	48.28'	25.53'	46.99'	N 10°32'59" E	46°06'18"
C10	60.00'	54.38'	29.22'	52.54'	N 38°28'08" W	51°55'57"
C11	60.00'	54.97'	29.58'	53.07'	S 89°19'04" W	5°29'37"
C12	60.00'	48.70'	25.78'	47.38'	S 39°48'59" W	4°30'34"
C13	60.00'	35.96'	18.54'	35.42'	S 00°36'28" E	34°20'19"
C14	50.00'	37.82'	19.87'	36.93'	N 03°53'38" E	43°20'30"
C15	25.00'	39.27'	25.00'	35.36'	N 70°33'53" E	90°00'00"
C16	360.00'	57.30'	28.71'	57.24'	S 88°58'41" E	08°07'09"
C17	360.00'	68.42'	34.31'	68.32'	S 78°58'57" E	10°53'23"
C18	360.00'	29.72'	14.87'	29.71'	S 86°48'33" E	04°43'48"



PROP. CORNER 5.20'
N 00°38'22" E
OF Q CHAUCER DR.

GRACE SULLIVAN ET AL.
D.V. 265 PG. 575

VINEYARDS I
VOL. 65 PG. 65

HOMESTEAD
VOL. 45

S.E. CORNER
ORIGINAL LOT 19
I.P. FOUND
ORIGINAL LOT 18

HOMESTEAD VINEYARDS II

